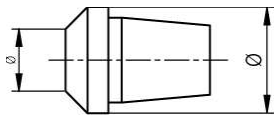


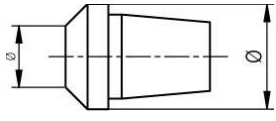
Accessoires | Zubehör | Accessories

Instruments verticaux
Height gauges
Höhenmessgeräte



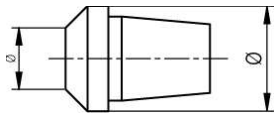
TV2S2
279 901007 002
Cône Ø0-15 mm
Konus Ø0-15 mm
Cone Ø0-15 mm

--	--	--	--	--	--	--	--	--	--



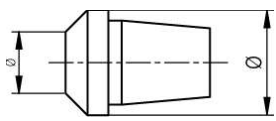
TV2S3
279 901007 003
Cône Ø13-20.5 mm
Konus Ø13-20.5 mm
Cone Ø13-20.5 mm

--	--	--	--	--	--	--	--	--	--



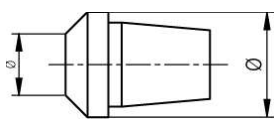
TV2S4
279 901007 004
Cône Ø17-24.5 mm
Konus Ø17-24.5 mm
Cone Ø17-24.5 mm

--	--	--	--	--	--	--	--	--	--



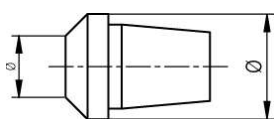
TV2S5
279 901007 005
Cône Ø23-30.5 mm
Konus Ø23-30.5 mm
Cone Ø23-30.5 mm

--	--	--	--	--	--	--	--	--	--



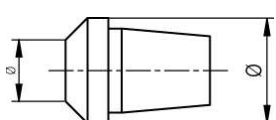
TV2S6
279 901007 006
Cône Ø26-35.5 mm
Konus Ø26-35.5 mm
Cone Ø26-35.5 mm

--	--	--	--	--	--	--	--	--	--



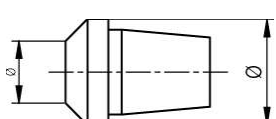
TV2S7
279 901007 007
Cône Ø32-39 mm
Konus Ø32-39 mm
Cone Ø32-39 mm

--	--	--	--	--	--	--	--	--	--



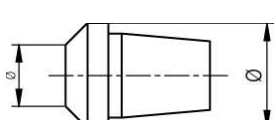
TV2S8
279 901007 008
Cône Ø36-45 mm
Konus Ø36-45 mm
Cone Ø36-45 mm

--	--	--	--	--	--	--	--	--	--



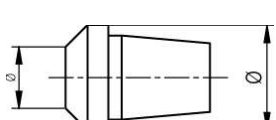
TV2S9
279 901007 009
Cône Ø41-50 mm
Konus Ø41-50 mm
Cone Ø41-50 mm

--	--	--	--	--	--	--	--	--	--



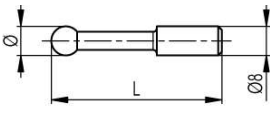
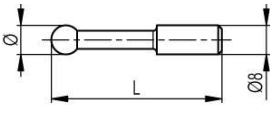
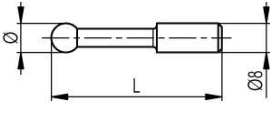
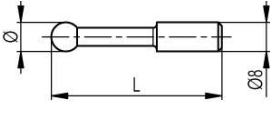
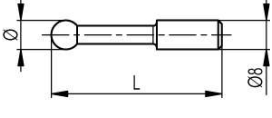
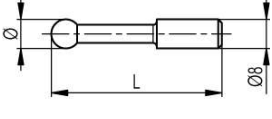
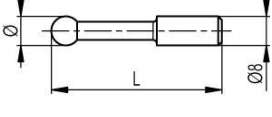
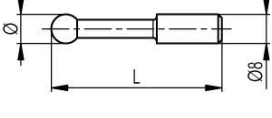
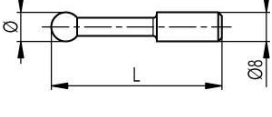
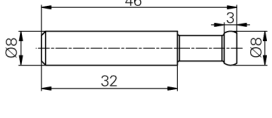
TV2S10
279 901007 010
Cône Ø46-55 mm
Konus Ø46-55 mm
Cone Ø46-55 mm

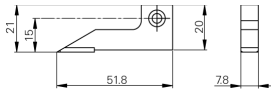
--	--	--	--	--	--	--	--	--	--



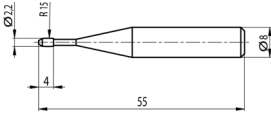
TV2S11
279 901007 011
Cône Ø51-60 mm
Konus Ø51-60 mm
Cone Ø51-60 mm

--	--	--	--	--	--	--	--	--	--

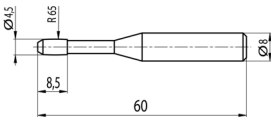
	<p>TVM2.9 509 05 20 0001</p> <p>Touche à bille Ø0.5 mm, L=40.4 mm Kugel-Messeinsatz Ø0.5 mm, L=40.4 mm Ball insert Ø0.5 mm, L=40.4 mm</p>	■							
	<p>TVM2.8 509 05 20 0003</p> <p>Touche à bille Ø1 mm, L=40.8 mm Kugel-Messeinsatz Ø1 mm, L=40.8 mm Ball insert Ø1 mm, L=40.8 mm</p>	■							
	<p>TVM2.4 509 05 20 0009</p> <p>Touche à bille Ø2 mm, L=41.6 mm Kugel-Messeinsatz Ø2 mm, L=41.6 mm Ball insert Ø2 mm, L=41.6 mm</p>	■							
	<p>TVM2.3 509 05 20 0014</p> <p>Touche à bille Ø3 mm, L=42.5 mm Kugel-Messeinsatz Ø3 mm, L=42.5 mm Ball insert Ø3 mm, L=42.5 mm</p>	■							
	<p>TVM2.2 509 05 20 0025</p> <p>Touche à bille Ø4 mm, L=43.5 mm Kugel-Messeinsatz Ø4 mm, L=43.5 mm Ball insert Ø4 mm, L=43.5 mm</p>	■							
	<p>TVM2.6 509 05 20 0031</p> <p>Touche à bille Ø5 mm, L=43.9 mm Kugel-Messeinsatz Ø5 mm, L=43.9 mm Ball insert Ø5 mm, L=43.9 mm</p>	■							
	<p>TVM2.1 509 05 20 0037</p> <p>Touche à bille Ø6 mm, L=45.1 mm Kugel-Messeinsatz Ø6 mm, L=45.1 mm Ball insert Ø6 mm, L=45.1 mm</p>	■							
	<p>TVM2.7 509 05 20 0045</p> <p>Touche à bille Ø7 mm, L=46.1 mm Kugel-Messeinsatz Ø7 mm, L=46.1 mm Ball insert Ø7 mm, L=46.1 mm</p>	■							
	<p>TVM2 509 05 20 0051</p> <p>Touche à bille Ø8 mm, L=47.3 mm Kugel-Messeinsatz Ø8 mm, L=47.3 mm Ball insert Ø8 mm, L=47.3 mm</p>	■							
	<p>TVM2.5 509 05 20 0059</p> <p>Touche à plateau Ø8 mm Zylindrischer Messeinsatz Ø8 mm Disc shaped insert Ø8 mm</p>	■							



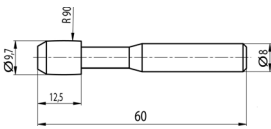
TVM3 609 12 003	Pointe à tracer							
	Anreissnadel	■						
	Scriber							



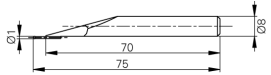
TVA9.1 509 05 20 0011	Touche en tonneau M3-M16, L=55 mm							
	Balliger Messeinsatz M3-M16, L=55 mm	■	■	■	■	■	■	■
	Barrel-shaped insert M3-M16, L=55 mm							



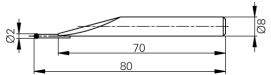
TVA9.2 509 05 20 0029	Touche en tonneau M6-M48, L=60 mm							
	Balliger Messeinsatz M6-M48, L=60 mm	■	■	■	■	■	■	■
	Barrel-shaped insert M6-M48, L=60 mm							



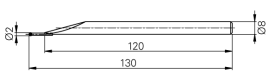
TVA9.3 509 05 20 0062	Touche en tonneau M12-M150, L=60 mm							
	Balliger Messeinsatz M12-M150, L=60 mm	■	■	■	■	■	■	■
	Barrel-shaped insert M12-M150, L=60 mm							



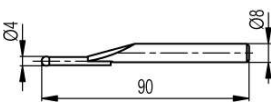
TA-MI-111 509 05 20 0078	Touche à bille métal dur Ø1 mm, L=75 mm							
	Messeinsatz mit Hartmetall-Kugel Ø1 mm, L=75 mm	■	■	■	■	■	■	■
	Measuring insert with tungst. carb. ball, Ø1 mm, L=75 mm							



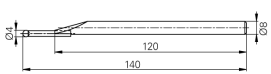
TA-MI-110 509 05 20 0077	Touche à bille en métal dur Ø2 mm, L=80 mm							
	Messeinsatz mit Hartmetall-Kugel Ø2 mm, L=80 mm	■	■	■	■	■	■	■
	Measuring insert with tungst. carb. ball Ø2 mm, L=80 mm							



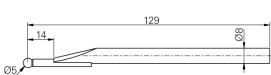
TA-MI-104 509 05 20 0080	Touche à bille métal dur Ø2 mm, L=130 mm							
	Messeinsatz mit Hartmetall-Kugel Ø2 mm, L=130 mm	■	■	■	■	■	■	■
	Measuring insert with tungst. carb. ball Ø2mm, L=130 mm							



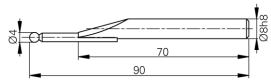
TA-MI-102 509 05 20 0075	Touche à bille métal dur Ø4mm, L=90 mm							
	Messeinsatz mit Hartmetall-Kugel Ø4 mm, L=90 mm	■	■	■	■	■	■	■
	Measuring insert with tungst. carb. ball Ø4 mm, L=90 mm							



TA-MI-105 509 05 20 0079	Touche à bille métal dur, Ø4 mm, L=140 mm							
	Messeinsatz mit Hartmetall-Kugel Ø4 mm, L=140 mm	■	■	■	■	■	■	■
	Measuring insert with tungst. carb. ball Ø4 mm, L=140 mm							



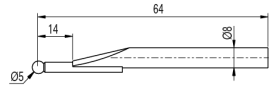
TA-MI-106 279 918011 004	Touche à bille rubis Ø5 mm, L=129 mm							
	Messeinsatz mit Rubin-Kugel Ø5 mm, L=129 mm	■	■	■	■	■	■	■
	Measuring insert with ruby ball Ø5 mm, L=129 mm							



TA-MI-101
509 05 20 0074

Touche à bille rubis Ø4 mm, L=90 mm
Messeinsatz mit Rubin-Kugel Ø4 mm, L=90 mm
Measuring insert with ruby ball Ø4 mm, L=90 mm

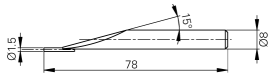
	■	■	■	■	■				



TA-MI-119
SP279 918011 005

Touche à bille rubis Ø5 mm, L=64 mm
Messeinsatz mit Rubin-Kugel Ø5 mm, L=64 mm
Measuring insert with ruby ball Ø5 mm, L=64 mm

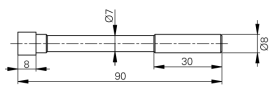
								■	■



TA-MI-107
509 05 20 0081

Touche à goupille métal dur Ø1.5 mm, L=78 mm
Zylindrischer Messeinsatz Ø1.5 mm, L=78 mm
Measuring insert with pin Ø1.5 mm, L=78 mm

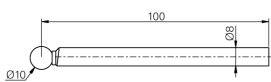
	■	■	■	■	■	■	■	■	■



TA-MI-112
509 05 20 0082

Touche à surfaces planes, 10 x 10 mm, L=90 mm
Messeinsatz mit Parallel-Messflächen, 10 x 10 mm, L=90 mm
Measuring insert with parallel faces, 10 x 10 mm, L=90 mm

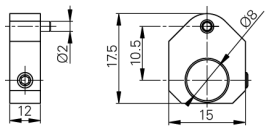
	■	■	■	■	■	■	■	■	■



TA-MI-108
279 918011 002

Touche à bille rubis Ø10 mm, L=100 mm
Messeinsatz mit Rubin-Kugel Ø10 mm, L=100 mm
Measuring insert with ruby ball Ø10 mm, L=100 mm

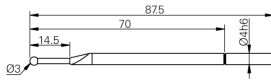
	■	■	■	■	■	■	■	■	■



TA-AD-101
603 11 001

Bague de positionnement de touche Ø8 mm
Positionierhalter für Messeinsatz Ø8 mm
Positioning holder for measuring insert Ø8 mm

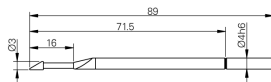
	■	■	■	■	■	■	■	■	■



TA-MI-109
279 918011 003

Touche à bille rubis Ø3 mm, L=87.5 mm
Messeinsatz mit Rubin-Kugel Ø3 mm, L=87.5 mm
Measuring insert with ruby ball Ø3 mm, L=87.5 mm

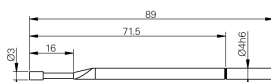
	■	■	■	■	■	■	■	■	■



V-50.10
279 918007 001

Touche biseautée
Abgeschrägter Messeinsatz
Knife-edge insert

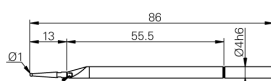
	■	■	■	■	■	■	■	■	■



V-50.11
279 918013 001

Touche en tonneau Ø3 x 5 mm, L = 89 mm
Balliger Messeinsatz Ø3 x 5 mm, L = 89 mm
Barrel-shaped insert Ø3 x 5 mm, L = 89 mm

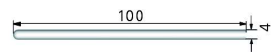
	■	■	■	■	■	■	■	■	■



V-50.12
279 918012 001

Touche à bille Ø1 mm avec porte-touche, L=86 mm
Kugel-Messeinsatz Ø1 mm mit Halter, L=86 mm
Measuring insert Ø1 mm with holder, L=86 mm

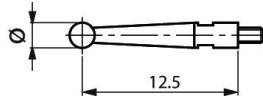
	■	■	■	■	■	■	■	■	■

**TA-MI-114**

506 22 20 0063

Goupille, 1 face hémisphérique et 1 face plane,
L=100 mmStift, 1 halbkugelförmige und 1 flache Messfläche,
L=100 mm

Pin, 1 hemispheric and 1 plane face, L=100 mm

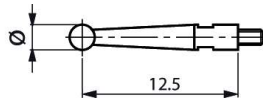
**TA-MI-115**

279 901001 001

Touche M1.4 avec bille Ø1 mm, L=12.5 mm

Fühlhebelmesseinsatz M1.4 mit Kugel Ø1 mm,
L=12,5 mm

Measuring insert M1.4 with ball Ø1 mm, L=12.5 mm

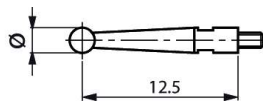
**TA-MI-116**

279 901001 002

Touche M1.4 avec bille Ø2 mm, L=12.5 mm

Fühlhebelmesseinsatz M1.4 mit Kugel Ø2 mm,
L=12.5 mm

Measuring insert M1.4 with ball Ø2 mm, L=12.5 mm

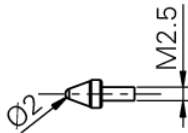
**TA-MI-117**

279 901001 003

Touche M1.4 avec bille Ø3 mm, L=12.5 mm

Fühlhebelmesseinsatz M1.4 mit Kugel Ø3 mm,
L=12.5 mm

Measuring insert M1.4 with ball Ø3 mm, L=12.5 mm

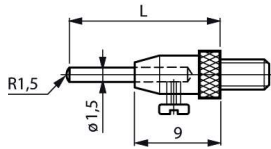
**V-50.4**

279 918010 001

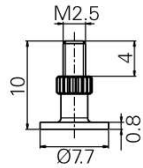
Touche hémisphérique M2,5

Messeinsatz M2.5 mit kugelförmiger Messfläche

Measuring insert M2,5 with ball contact

**TA-MI-118**

279 901003 001

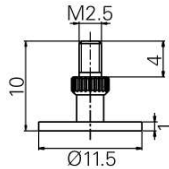
Touche M2.5 à 4 goupilles interchangeable,
L=16/26/36/46 mmMesseinsatz M2.5 mit 4 wechselbaren Stiften,
L=16/26/36/46 mmMeasuring insert M2.5 with 4 interchangeable pins,
L=16/26/36/46 mm**V-50.2.1**

279 918005 002

Touche à disque M2,5, Ø7.7 mm

Diskförmiger Messeinsatz M2,5, Ø7.7 mm

Disc-shaped inserts M2,5, Ø7.7 mm

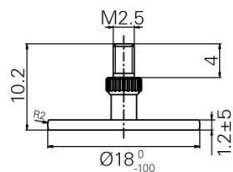
**V-50.2.2**

279 918005 003

Touche à disque M2,5, Ø11.5 mm

Diskförmiger Messeinsatz M2,5, Ø11.5 mm

Disc-shaped insert M2,5, Ø11.5 mm

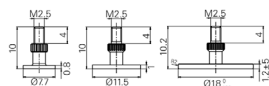
**V-50.2.3**

279 918005 004

Touche à disque M2,5, Ø18 mm

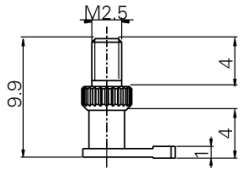
Diskförmiger Messeinsatz M2,5, Ø18 mm

Disc-shaped inserts M2,5, Ø18 mm

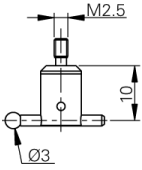
**V-50.2**

279 918005 001

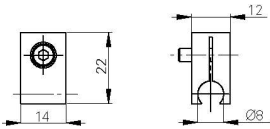
Jeu de 3 touches à disque M2,5, Ø 7.7 / 11.5 / 18
mmSatz mit 3 Diskusförmigen Messeinsätzen M2,5, Ø
7.7 / 11.5 / 18 mmSet of 3 disc-shaped inserts M2,5, Ø 7.7 / 11.5 / 18
mm



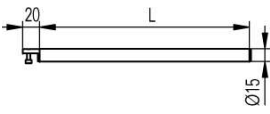
<p>V-50.3 279 918008 001</p>	Touche à pied M2.5								
	L-förmiger Messeinsatz M2.5	■	■	■	■	■	■	■	■
	Corner insert M2.5								



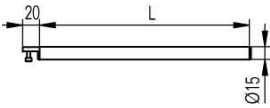
<p>V-50.1 279 918009 001</p>	Touche M2.5 à bille rubis orientable Ø3 mm								
	Messeinsatz M2.5 mit Rubin-Kugel Ø3 mm	■	■	■	■	■	■	■	■
	Measuring insert M2.5 with ruby ball Ø3 mm								



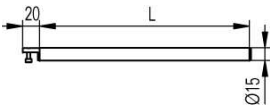
<p>TVM1.1 502 02 10 0015</p>	Bride pour touche Ø 8 mm								
	Aufnahme-Bride Ø 8 mm	■							
	Clamping device Ø 8 mm								



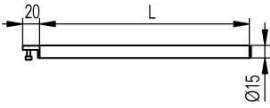
<p>TVM1 612 11 007</p>	Porte-touche standard TVM, L=154 mm								
	Standard Messeinsatz-Halter für TVM, L=154 mm	■							
	Standard insert holder for TVM, L=154 mm								



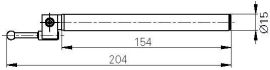
<p>TVM1/L250 612 11 061</p>	Porte-touche, L=250 mm								
	Messeinsatz-Halter, L=250 mm	■							
	Insert holder, L=250 mm								



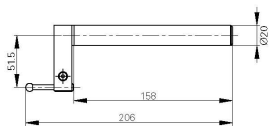
<p>TVM1/L300 612 11 062</p>	Porte-touche, L=300 mm								
	Messeinsatz-Halter, L=300 mm	■							
	Insert holder, L=300 mm								



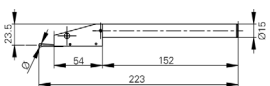
<p>TVM1/L350 612 11 063</p>	Porte-touche, L=350 mm								
	Messeinsatz-Halter, L=350 mm	■							
	Insert holder, L=350 mm								



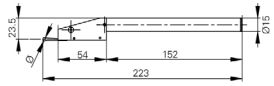
<p>TVM1/1.1/2 609 05 061</p>	Touche + porte-touche (TVM1 + 1.1 + 2), (Jeu complet)								
	Messeinsatz mit Halter (TVM1 + 1.1 + 2), (Kompletter Satz)	■							
	Measuring insert + holder (TVM1 + 1.1 + 2), (Complete Set)								



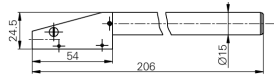
<p>TVA1 612 11 028</p>	Touche + porte-touche pour TVM1000								
	Messeinsatz mit Halter für TVM1000	■							
	Measuring insert + holder for TVM1000								



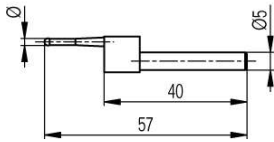
<p>TVM4 609 05 074</p>	Touche bidirectionnelle Ø4 mm								
	Umkehrtaster Ø4 mm	■							
	Bi-directional probe Ø4 mm								



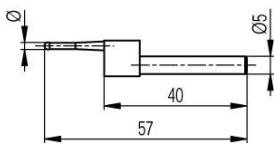
TVM4.1/4.2 609 05 075	Touche bidirectionnelle Ø2 mm Umkehrtaster Ø2 mm Bi-directional probe Ø2 mm								
---------------------------------	---	--	--	--	--	--	--	--	--



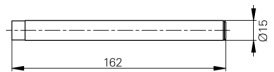
TVM4.1 612 11 030	Support pour touche bidirectionnelle Halter für Umkehrtaster Holder for bi-directional probe								
-----------------------------	--	--	--	--	--	--	--	--	--



TVM4.2 609 05 021	Touche Ø2 mm pour touche bidirectionnelle Messeinsatz Ø2 mm für Umkehrtaster Measuring insert Ø2 mm for bi-directional probe								
-----------------------------	--	--	--	--	--	--	--	--	--



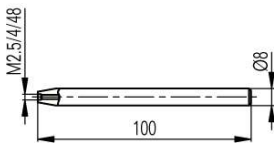
TVM4.3 609 05 024	Touche Ø4 mm pour touche bidirectionnelle Messeinsatz Ø4 mm für Umkehrtaster Measuring insert Ø4 mm for bi-directional probe								
-----------------------------	--	--	--	--	--	--	--	--	--



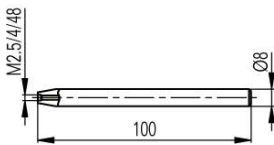
TVM5.1 609 05 054	Support pour cônes Konushalter Cone holder								
-----------------------------	--	--	--	--	--	--	--	--	--



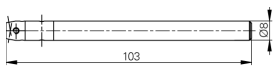
TVM5 709 05 054	Jeux de cônes avec support (TV2S2/3/4/5 + TVM5.1) Satz Zentrierkone mit Halter (TV2S2/3/4/5 + TVM5.1) Set of cones with holder (TV2S2/3/4/5 + TVM5.1)								
---------------------------	---	--	--	--	--	--	--	--	--



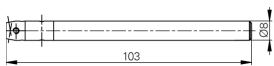
TVM6 512 11 20 0018	Porte-touche Ø8 mm pour touches M2.5 Halter Ø8 mm für Messeinsätze M2.5 Holder Ø8 mm for measuring inserts M2.5								
-------------------------------	---	--	--	--	--	--	--	--	--



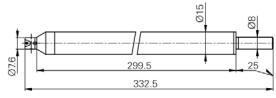
TVM6E 512 11 20 0019	Porte-touche Ø8 mm pour touches 4-48 Halter Ø8 mm für Messeinsätze 4-48 Holder Ø8 mm for measuring inserts 4-48								
--------------------------------	---	--	--	--	--	--	--	--	--



TA-IH-101 612 11 045	Porte-touche M2.5, L=103 mm Messeinsatz-Halter M2.5, L=103 mm Measuring insert holder M2.5, L=103 mm								
--------------------------------	--	--	--	--	--	--	--	--	--



TA-IH-103 612 11 047	Porte-touche 4-48, L=103 mm Messeinsatz-Halter 4-48, L=103 mm Measuring insert holder 4-48, L=103 mm								
--------------------------------	--	--	--	--	--	--	--	--	--



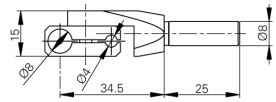
TA-IH-102
612 11 046

Porte-touche M2.5, L=300 mm
Messeinsatz-Halter M2.5, L=300 mm
Measuring insert holder M2.5, L=300 mm



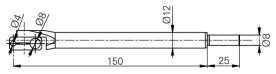
TA-IH-119
612 11 048

Porte-touche (")4-48, L=300mm
Messeinsatz-Halter (")4-48, L=300mm
Measuring insert holder (")4-48, L=300mm



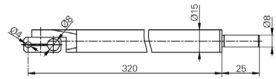
TA-IH-104
612 11 053

Porte-touche orientable Ø4 et Ø8 mm
Orientabler Messeinsatz-Halter Ø4 und Ø8 mm
Swivel holder Ø4 and Ø8 mm



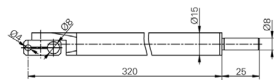
TA-IH-105
612 11 051

Porte-touche orientable Ø4 et Ø8 mm, L=150 mm
Orientabler Messeinsatz-Halter Ø4 und Ø8 mm, L=150 mm
Swivel holder Ø4 and Ø8 mm, L=150 mm



V-2E/D1/4/L1
612 11 013

Porte-touche orientable Ø1/4 ", L=150 mm
Orientabler Messeinsatz-Halter Ø1/4 ", L=150 mm
Swivel holder Ø1/4 ", L=150 mm



TA-IH-106
612 11 039

Porte-touche orientable Ø4 et Ø8 mm, L=300 mm
Orientabler Messeinsatz-Halter Ø4 und Ø8 mm, L=300 mm
Swivel holder Ø4 and Ø8 mm, L=300 mm



TA-IH-107
612 11 055

Porte-touche à 90°, Ø8 mm
Messeinsatz-Halter 90°, Ø8 mm
Insert holder 90°, Ø8 mm



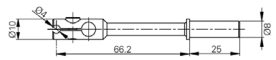
TA-IH-108
612 11 052

Porte-touche à 90°, Ø8 mm, L=150 mm
Messeinsatz-Halter 90°, Ø8 mm, L=150 mm
Insert holder 90°, Ø8 mm, L=150 mm



TA-IH-129
612 11 040

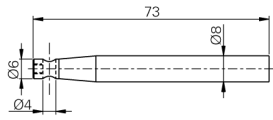
Porte-touche orienté à 90°, Ø 8mm, L=300mm
Messeinsatz-Halter, 90° geschwenkt, Ø 8mm, L=300mm
Holder at 90°, Ø 8mm, L=300mm



TA-IH-109
612 11 054

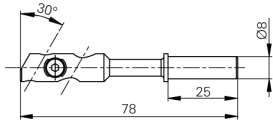
Porte-touche à 90°, Ø4 mm
Messeinsatz-Halter 90°, Ø4 mm
Insert holder 90°, Ø4 mm

TVM	V3	V4	V5	V6	V7	V8	V9
TA-IH-102 612 11 046						■	■
TA-IH-119 612 11 048						■	■
TA-IH-104 612 11 053						■	■
TA-IH-105 612 11 051						■	■
V-2E/D1/4/L1 612 11 013						■	■
TA-IH-106 612 11 039						■	■
TA-IH-107 612 11 055	■	■	■	■	■	■	■
TA-IH-108 612 11 052	■	■	■	■	■	■	■
TA-IH-129 612 11 040						■	■
TA-IH-109 612 11 054	■	■	■	■	■	■	■



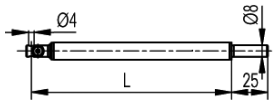
TA-IH-110
279 918103 001
Porte-touche à 90°, Ø4 mm
Messeinsatz-Halter 90°, Ø4 mm
Insert holder 90°, Ø4 mm

	■	■	■	■	■	■	■	■	■



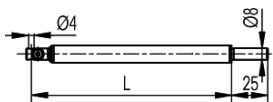
V-4
612 11 011
Porte-touche à 30°, Ø4 mm
Messeinsatz-Halter 30°, Ø4 mm
Insert holder 30°, Ø4 mm

	■	■	■	■	■	■	■	■	■



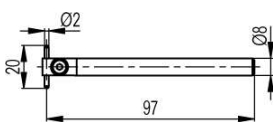
TA-IH-111
612 11 041
Porte-touche à 90°, Ø4 mm, L=150 mm
Messeinsatz-Halter 90°, Ø4 mm, L=150 mm
Insert holder 90°, Ø4 mm, L=150 mm

								■	■



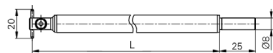
TA-IH-112
612 11 042
Porte-touche à 90°, Ø4 mm, L=300 mm
Messeinsatz-Halter 90°, Ø4 mm, L=300 mm
Insert holder 90°, Ø4 mm, L=300 mm

								■	■



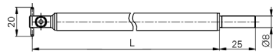
TVA4
609 05 007
Porte-touche à tige Ø2 x 20 mm
Messeinsatz-Halter mit Stift Ø 2 x 20 mm
Insert holder with pin Ø2 x 20 mm

	■	■	■	■	■	■	■	■	■



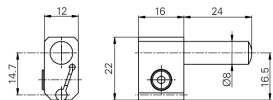
TA-IH-113
612 11 043
Porte-touche à tige Ø2 x 20 mm, L=200 mm
Messeinsatz mit Stift Ø2 x 20 mm, L=200 mm
Insert holder with pin Ø2 x 20 mm, L=200 mm

								■	■



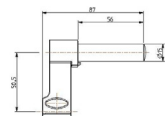
TA-IH-114
612 11 044
Porte-touche à tige Ø2 x 20 mm, L=300 mm
Messeinsatz mit Stift Ø2 x 20 mm, L=300 mm
Insert holder with pin Ø2 x 20 mm, L=300 mm

								■	■



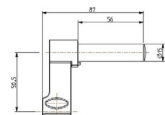
V-5
612 11 012
Reduction Ø 8 / 4 mm
Reduktion Ø 8 / 4 mm
Reduction Ø 8 / 4 mm

								■	■



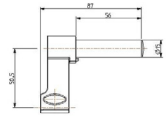
TA-IH-135
612 11 065
Porte-touche standard Ø8 mm
Standard Messeinsatz-Halter Ø8 mm
Standard insert holder Ø8 mm

	■	■	■	■	■	■	■	■	■



TA-IH-128
612 11 067
Porte-touche Ø4 mm
Messeinsatz-Halter Ø4 mm
Measuring insert holder Ø4 mm

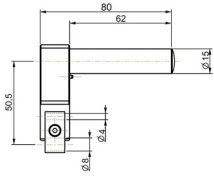
	■	■	■	■	■	■	■	■	■



TA-IH-137
SP612 11 065 01

Porte-touche Ø6 mm
Messeinsatz-Halter Ø6 mm
Measuring insert holder Ø6 mm

	■	■	■	■	■				



TA-IH-130
612 11 072

Porte-touche orientable Ø4 et Ø8 mm
Orientabler Messeinsatz-Halter Ø4 und Ø8 mm
Swivel holder Ø4 and Ø8 mm

	■	■	■	■	■				



TA-IH-127
612 11 066

Porte-touche Ø8 mm, L=400 mm
Messeinsatz-Halter Ø8 mm, L=400 mm
Insert holder Ø8 mm, L=400 mm

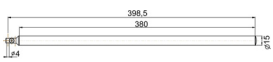
	■	■	■	■	■				



TA-IH-131
612 11 068

Porte-touche orientable Ø4 et Ø8 mm, L=400 mm
Orientabler Messeinsatz-Halter Ø4 und Ø8 mm, L=400 mm
Swivel holder Ø4 and Ø8 mm, L=400 mm

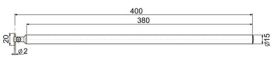
	■	■	■	■	■				



TA-IH-132
612 11 069

Porte-touche 90°, Ø4 mm, L=400 mm
Messeinsatz-Halter 90°, Ø4 mm, L=400 mm
Insert holder 90°, Ø4 mm, L=400 mm

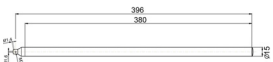
	■	■	■	■	■				



TA-IH-133
612 11 070

Porte-touche à tige Ø2 x 20 mm, L=400 mm
Messeinsatz-Halter mit Stift Ø 2 x 20 mm, L=400 mm
Insert holder with pin Ø2 x 20 mm, L=400 mm

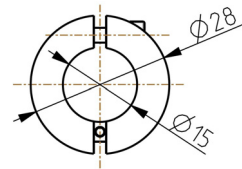
	■	■	■	■	■				



TA-IH-134
612 11 071

Porte-touche M2.5, L=400 mm
Messeinsatz-Halter M2.5, L=400 mm
Measuring insert holder M2.5, L=400 mm

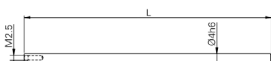
	■	■	■	■	■				



TA-AD-105
603 11 003

Bague de positionnement de touche Ø15 mm
Positionierhalter für Messeinsatz Ø15 mm
Positioning holder for measuring insert Ø15 mm

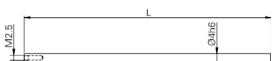
	■	■	■	■	■				



V-50.6
279 918002 002

Porte-touche M2.5, L=80 mm
Messeinsatz-Halter M2.5, L=80 mm
Measuring insert holder M2.5, L=80 mm

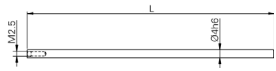
	■	■	■	■	■	■	■	■	■



V-50.5
279 918002 001

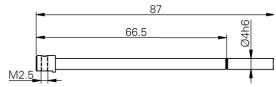
Porte-touche M2.5, L=124 mm
Messeinsatz-Halter M2.5, L=124 mm
Measuring insert holder M2.5, L=124 mm

	■	■	■	■	■	■	■	■	■



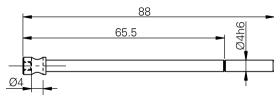
TA-IH-115
279 918002 003
Porte-touche M2.5, L=200 mm
Messeinsatz-Halter M2.5, L=200 mm
Measuring insert holder M2.5, L=200 mm

	■	■	■	■	■	■	■	■



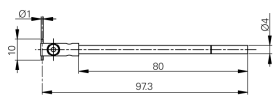
V-50.7
279 918001 002
Porte-touche à 90°, M2.5
Messeinsatz-Halter 90°, M2.5
Insert holder 90°, M2.5

	■	■	■	■	■	■	■	■



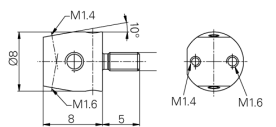
V-50.8
279 918001 001
Porte-touche à 90°, Ø4 mm
Messeinsatz-Halter 90°, Ø4 mm
Insert holder 90°, Ø4 mm

	■	■	■	■	■	■	■	■



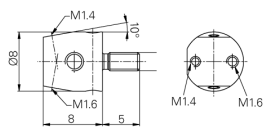
TA-IH-116
279 918001 003
Porte-touche à tige, Ø1 x 10 mm, L=80 mm
Messeinsatz mit Stift, Ø1 x 10 mm, L=80 mm
Measuring insert holder, Ø1 x 10 mm, L=80 mm

	■	■	■	■	■	■	■	■



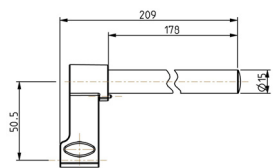
TA-IH-117
512 11 20 0012
Porte-touche pour touches M2.5, M1.6, M1.4
Halter für Messeinsätze M2.5, M1.6, M1.4
Holder for measuring inserts M2.5, M1.6, M1.4

	■	■	■	■	■	■	■	■



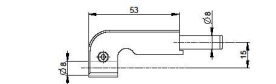
TA-IH-118
512 11 20 0013
Porte-touche pour touches 4-48, M1.6, M1.4
Halter für Messeinsätze 4-48, M1.6, M1.4
Holder for measuring inserts 4-48, M1.6, M1.4

	■	■	■	■	■	■	■	■



TA-IH-136
612 11 073
Porte-touche Ø8 mm, L=200 mm, Support pour palpeur de perpendicularité
Messeinsatz-Halter Ø8 mm, L=200 mm, Halter für Rechtwinkligkeitstaster
Insert holder Ø8 mm, L=200 mm, Holder for perpendicularity probe

	■	■	■	■	■	■	■	■



TA-IH-126
612 07 006
Support pour palpeur de perpendicularité
Halter für Rechtwinkligkeitstaster
Holder for perpendicularity probe

							■	■



TA-MS-101
276 940001 001
Palpeur de perpendicularité pour V6/V7/V8/V9-400/700, (sans support - V6/V7: TA-IH-136 & V8/V9: TA-IH-126)
Rechtwinkligkeitstaster für V6/V7/V8/V9-400/700, (ohne Halter - V6/V7: TA-IH-136 & V8/V9: TA-IH-126)
Perpendicularity probe for V6/V7/V8/V9-400/700, (without support - V6/V7: TA-IH-136 & V8/V9: TA-IH-126)

							■	■



TA-MS-102
276 940001 002
Palpeur de perpendicularité pour V6/V7/V8/V9-1100, (sans support - V6/V7: TA-IH-136 & V8/V9: TA-IH-126)
Rechtwinkligkeitstaster für V6/V7/V8/V9-1100, (ohne Halter - V6/V7: TA-IH-136 & V8/V9: TA-IH-126)
Perpendicularity probe for V6/V7/V8/V9-1100, (without support - V6/V7: TA-IH-136 & V8/V9: TA-IH-126)

							■	■



TA-MS-104
609 02 021

Palpeur de perpendicularité pour V7-1800, (sans support TA-IH-136)
Rechtwinkligkeitstaster für V7-1800, (ohne Halter TA-IH-136)
Perpendicularity probe for V7-1800, (without support TA-IH-136)



TA-SU-101
740 02 001

Paire de vis d'appui pour base V4 ÷ V9
Paar Stützschrauben für Gerätebasis V4 ÷ V9
Pair of abutment screw for instrument base V4 ÷ V9



TA-SE-106
605 01 022

Jeux d'accessoires "Macro" (16 pcs)
Zubehörsatz "Macro" (16 Stk.)
Set of accessories "Macro" (16 pcs)



TA-SE-102
605 01 008

Jeux d'accessoires "Micro" (20 pcs)
Zubehörsatz "Micro" (20 Stk.)
Set of accessories "Micro" (20 pcs)



TA-SE-105
605 01 023

Jeux d'accessoires "Micro" (20 pcs)
Zubehörsatz "Micro" (20 Stk.)
Set of accessories "Micro" (20 pcs)



TA-SE-107
605 01 024

Jeux d'accessoires "Eco" (7 pcs)
Zubehörsatz "Eco" (7 Stk.)
Set of accessories "Eco" (7 pcs)



TA-MG-104
609 01 032

Jauge d'étalonnage 25 mm
Einstellehre 25 mm
Setting gauge 25 mm



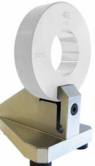
TA-MG-105
SP609 01 032 02

Bloc d'étalonnage avec hauteur et diamètre, H=100 mm
Einstell-Lehre mit Höhe und Durchmesser, H=100 mm
Setting gauge with height and diameter, H=100 mm



TA-MG-001
503 11 20 0078

Bague de référence standard Ø 40 mm, avec certificat SCS, U= (2s= 0,6 + 1.7 x L) [µm]
Standard Referenzring Ø 40 mm, mit SCS-Zertifikat, U= (2s= 0,6 + 1.7 x L) [µm]
Standard reference ring Ø40 mm, With SCS certificate, U= (2s= 0,6 + 1.7 x L) [µm]



TA-SU-102
SP609 40 040 03

Support pour mesure de bague-étalon TA-MG-001, (sans bague)
Messsänder für Einstellring TA-MG-001, (ohne Ring)
Measuring stand for master ring gauge TA-MG-001, (without ring)



<p>TA-TO-102 614 00 007</p>	Pièce de démonstration								
	Vorführungsteil	■	■	■	■	■	■	■	■
	Demonstration piece								



<p>V-60 612 12 045</p>	Support de rangement pour accessoires								
	Zubehör-Ablagefach	■	■	■	■	■	■	■	■
	Wooden accessories support								



<p>V-50.13 290 918001 001</p>	Clé pour touche comparateur à levier								
	Schlüssel für Fühlhebelmesseinsatz		■	■	■	■	■	■	■
	Wrench for measuring inserts								



<p>TVM.HO300 505 05 10 0009</p>	Housse de protection pour TVM301								
	Schutzhaube für TVM301	■							
	Protection cover for TVM301								



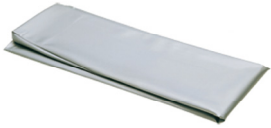
<p>TVM.HO600 505 05 10 0011</p>	Housse de protection pour TVM601								
	Schutzhaube für TVM601	■							
	Protection cover for TVM601								



<p>TA-TO-114 505 05 10 0041</p>	Housse de protection pour V3 ÷ V9 - 400								
	Schutzhaube für V3 ÷ V9 - 400		■	■	■	■	■	■	■
	Protection cover for V3 ÷ V9 - 400								



<p>TA-TO-115 505 05 10 0042</p>	Housse de protection pour V3 ÷ V9 - 700								
	Schutzhaube für V3 ÷ V9 - 700		■	■	■	■	■	■	■
	Protection cover for V3 ÷ V9 - 700								



<p>TA-TO-116 505 05 10 0043</p>	Housse de protection pour V5 ÷ V9 - 1100								
	Schutzhaube für V5 ÷ V9 - 1100				■	■	■	■	■
	Protection cover for V5 ÷ V9 - 1100								



<p>TA-TO-117 505 05 10 0044</p>	Housse de protection pour V7 - 1800								
	Schutzhaube für V7 - 1800							■	
	Protection cover for V7 - 1800								



<p>TVM.O-PC/AT 333 9 0003</p>	Câble Opto-PC / AT 9 P/F 2 m								
	Kabel Opto-PC / AT 9 P/W 2 m	■							
	Cable Opto-PC / AT 9 P/F 2 m								



TA-EL-112
333 0 0104

Câble pour connexion RS232-PC
Kabel für RS232-PC-Verbindung
Cable for RS232-PC connection

		■	■	■	■	■	■	■	■



TA-EL-013
332 02 0001

Câble de liaison USB A-B, L=1.8 m
Verbindungskabel, USB A-B, L=1.8 m
USB A-B connection cable, L=1.8 m

								■	■



TA-EL-014
332 02 0002

Câble de liaison USB A-Mini B, L=1.8m
Verbindungskabel, USB A-Mini B, L=1.8m
USB A-Mini B connection cable, L=1.8m

		■	■	■	■			■	



TA-EL-022
716 35 008

Système de transmission de données sans fil, 1 x dongle pour l'Instrument & 1 x dongle USB pour PC
Drahtloses Datenübertragungssystem, 1 x Dongle für das Instrument & 1 x USB-Dongle für PC
Wireless data transmission system, 1 x dongle for the instrument & 1 x USB dongle for PC

			■	■	■	■	■	■	■



TA-EL-032
756 0018

Imprimante thermique avec support, chargeur et câble RS232, (Pour V3 ÷ V6)
Thermodrucker mit Halter, Ladegerät und RS232-Kabel, (für V3 ÷ V6)
Thermal printer with holder, AC adapter and RS232 cable, (for V3 ÷ V6)

		■	■	■	■			■	



TA-EL-033
756 0020

Imprimante thermique avec support, chargeur et câble RS232, (Pour V7 & V9)
Thermodrucker mit Halter, Ladegerät und RS232-Kabel, (für V7 & V9)
Thermal printer with holder, AC adapter and RS232 cable, (for V7 & V9)

								■	■



V-30.7
788 000001 001

Rouleaux de papier (5 pces) pour imprimante thermique
Papierrollen (5 Stk.) für Thermodrucker
Paper rolls (5 pces) for thermal printer

		■	■	■	■	■	■	■	■



TA-EL-063
3704 0024

Batterie pour imprimante TA-EL-032 & TA-EL-033
Batteriesatz für Drucker TA-EL-032 & TA-EL-033
Battery pack for printer TA-EL-032 & TA-EL-033

		■	■	■	■	■	■	■	■



TA-EL-016
332 08 0001

Câble de connection instrument-affichage 0.23 m (HDMI)
Verbindungskabel Instrument-Anzeige 0.23 m (HDMI-Stecker)
Connection cable Instrument-Display 0.23 m (HDMI)

		■	■	■	■	■	■	■	■



TA-EL-132
357 0112

Convertisseur AC/DC 100-240V/12V - 3A (avec adaptateur)
Netzgerät AC/DC 100-240V/12V - 3A (mit Adapter)
Adapter AC/DC 100-240V/12V - 3A (with adapter)

		■	■	■	■			■	



TA-EL-133 357 0113	Convertisseur AC/DC 100-240V/12V - 2.5A (avec adaptateur)								
	Netzgerät AC/DC 100-240V/12V - 2.5A (mit adapter)							■	■
	Adapter AC/DC 100-240V/12V - 2.5A (with adapter)								



TA-EL-060 3704 0021	Accumulateur pour V2, V3, V4, V5, V6 & V8, (Li-ion 7,2V - 2600mA/h)								
	Batteriesatz für V2, V3, V4, V5, V6 & V8, (Li-ion 7,2V - 2600mA/h)		■	■	■	■		■	
	Battery pack for V2, V3, V4, V5, V6 & V8, (Li-ion 7,2V - 2600mA/h)								



TA-EL-061 3704 0022	Accumulateur pour V7 & V9, (Li-ion 7,2V - 10,4A/h)								
	Batteriesatz für V7 & V9, (Li-ion 7,2V - 10,4A/h)							■	■
	Battery pack for V7 & V9, (Li-ion 7,2V - 10,4A/h)								



TA-EL-062 3705 0005	Pile-bouton pour l'horloge interne								
	Batterie für den Uhrzeitspeicher							■	■
	Back-up battery								



BAT-TVM.OPT 3705 0002	Pile								
	Batterie	■							
	Lithium Cell								



TA-SW-002 394 1 0051	Logiciel de communication (TrimosDataTransfer)								
	Software für Datenübertragung (TrimosDataTransfer)		■	■	■	■	■	■	■
	Software for data transfer (TrimosDataTransfer)								



TA-SW-003 394 1 0052	Logiciel de communication (TrimosDataTransfer Advanced), avec création de port COM virtuel								
	Software für Datenübertragung (TrimosDataTransfer Advanced), mit virtueller COM-Port Erstellung		■	■	■	■	■	■	■
	Software for data transfer (TrimosDataTransfer Advanced), with virtual COM-port creation								

TRIMOS SA

Av. de Longemalle 5
CH-1020 Renens
T. +41 21 633 01 01
www.trimos.com