

# Contact Point

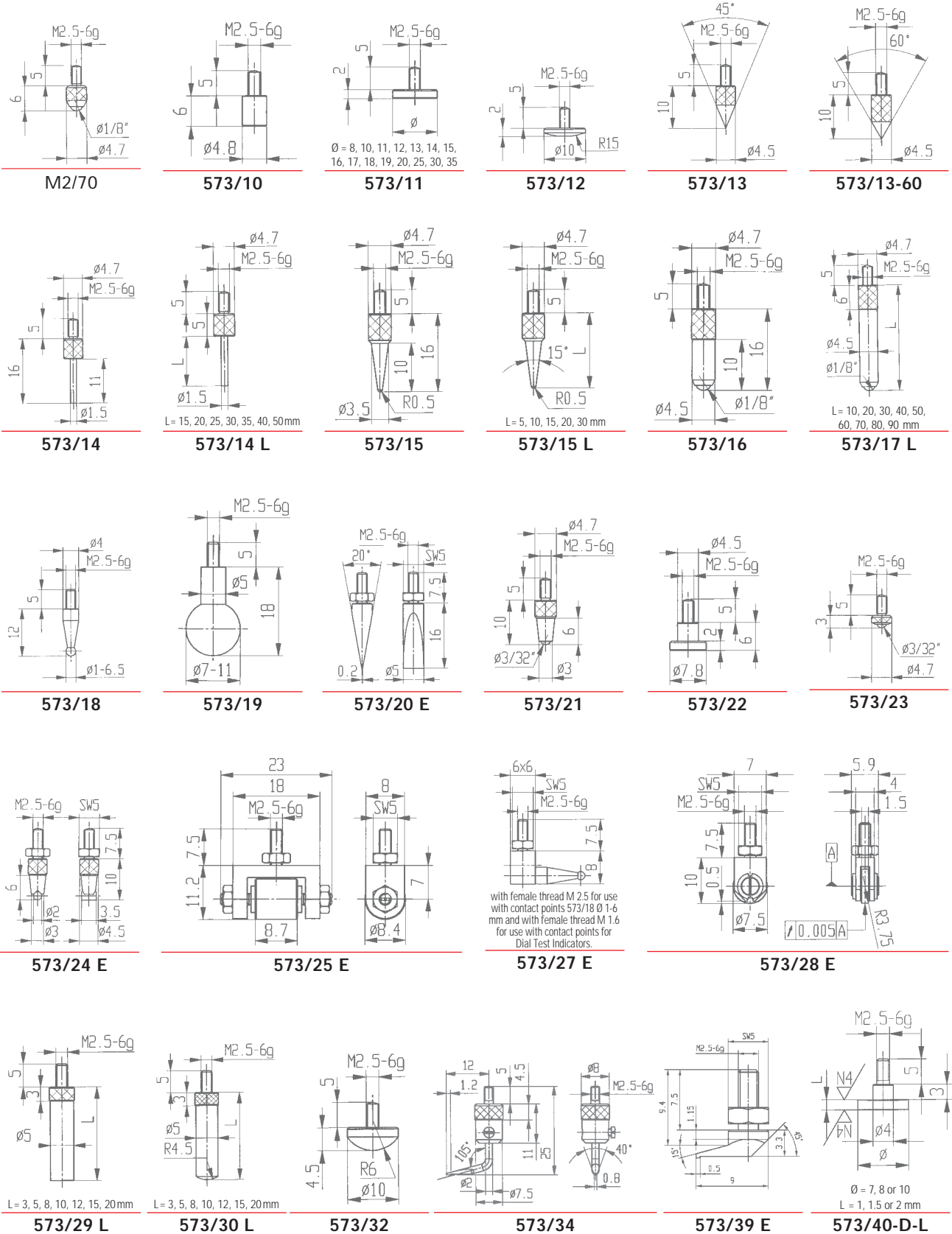
for Dial Gauges and Comparator Gauge



Your partner for highest precision.

# Contact Points for Dial Gauges and Comparator Gauges

with male thread M 2.5



## Contact Point Extensions

Contact Points with carbide (H) or ceramic (C) insert

Contact Points with balls from ruby (R), sapphire (S) or plastic (KU)

with male thread M 2.5

Contact Point Extensions:

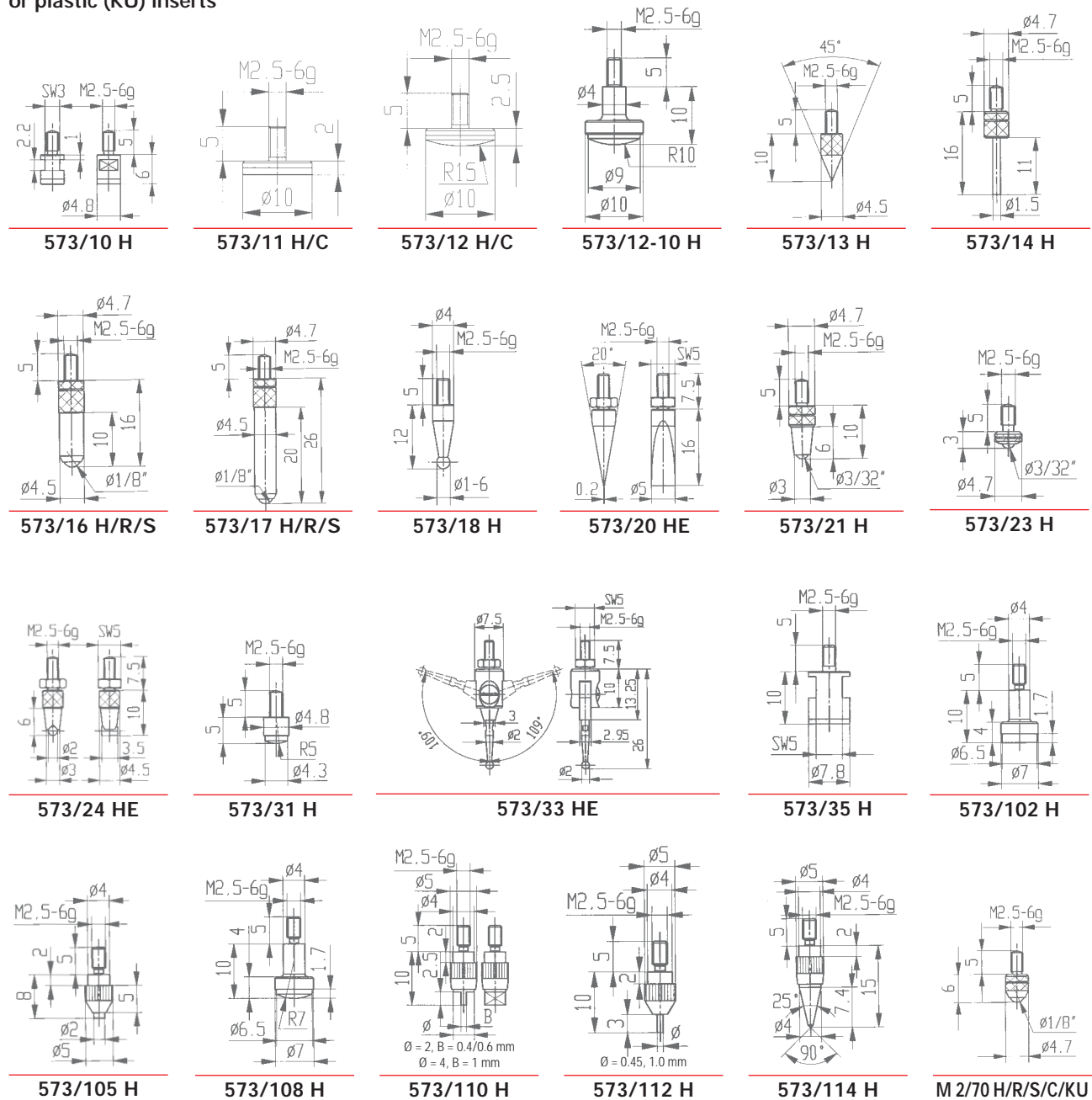
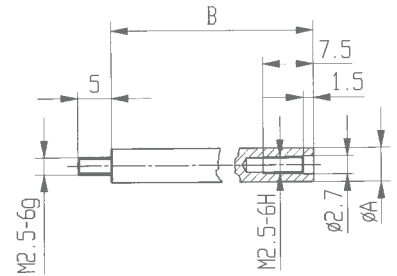
Dimension A: 4 mm (used at Dial Gauges with spindle  $\varnothing$  of 4 mm)

Dimension A: 5 mm (used at Dial Gauges with spindle  $\varnothing$  of 5 mm)

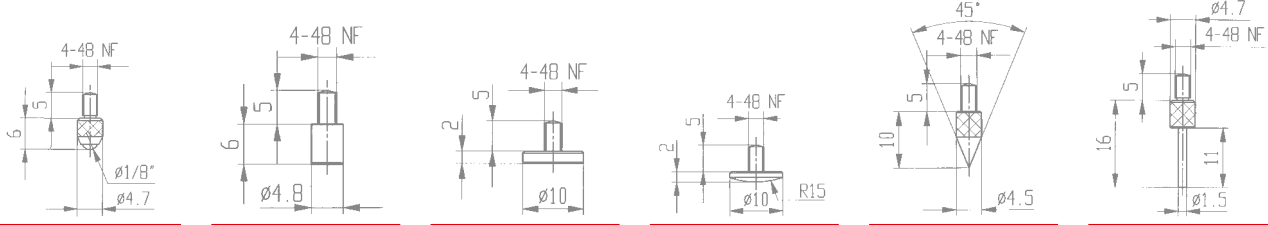
Dimension B available in the following standard lengths: 10, 15, ..... 90, 95 and 100 mm

Custom lengths are available.

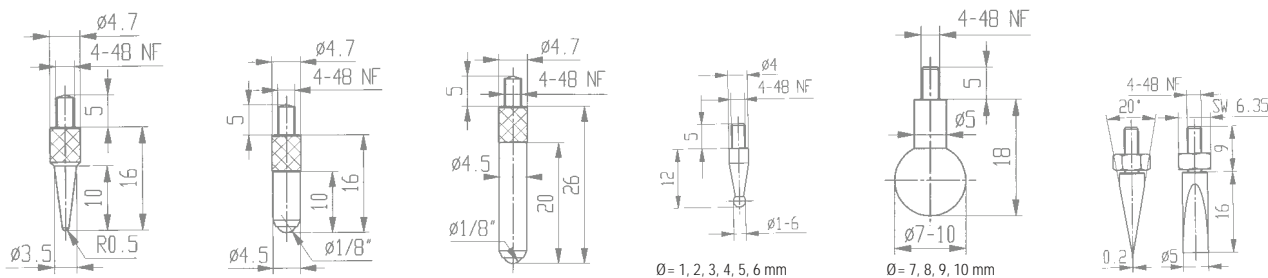
Contact Points with carbide (H), ruby (R), sapphire (S), ceramic (C), or plastic (KU) inserts



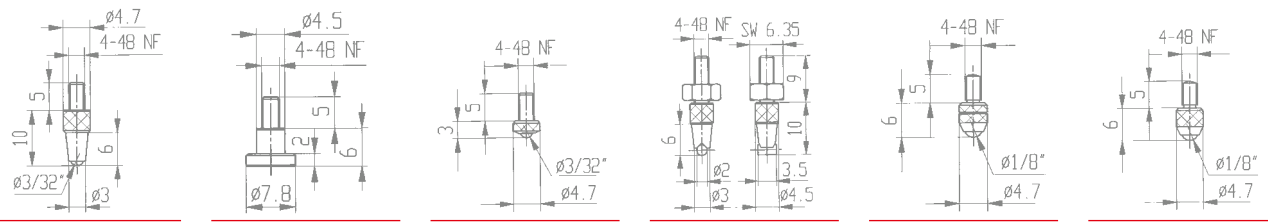
**Steel contact points (Z) for Dial Gauges and Comparator Gauges**  
**Carbide (HZ) and ruby (RZ) contact points**  
**with 4/48 male threads**



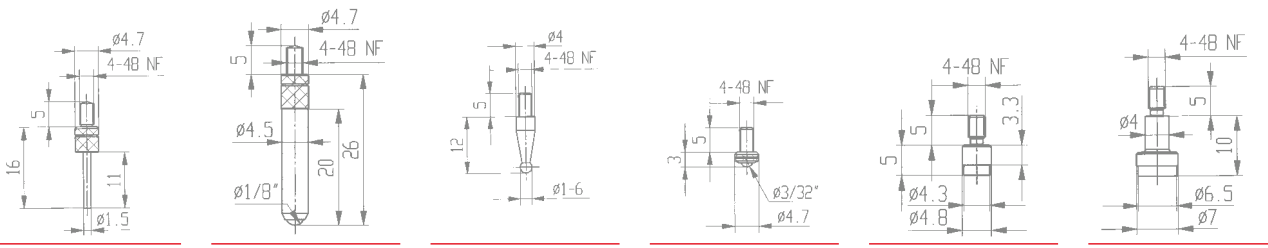
**M2/70 Z      573/10 Z      573/11 Z      573/12 Z      573/13 Z      573/14 Z**



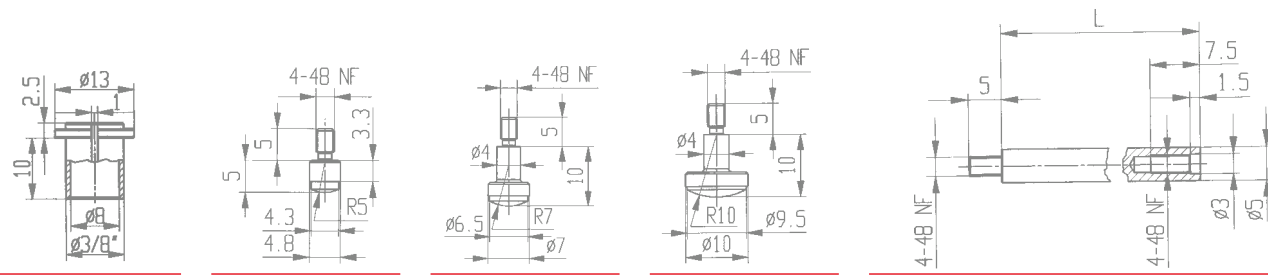
**573/15 Z      573/16 Z      573/17 Z      573/18 Z      573/19 Z      573/20 ZE**



**573/21 Z      573/22 Z      573/23 Z      573/24 ZE      M2/70 HZ      M2/70 RZ/SZ**



**573/14 HZ      573/17 HZ      573/18 HZ      573/23 HZ      573/101 HZ      573/102 HZ**



**Adapter 62168      573/107 HZ      573/108 HZ      573/109 HZ      Contact Point Extensions**

Dimension L available in the following standard lengths:  
 1", 2", 3" and 4". Custom lengths are available.

# Precision Dial Gauges



Käfer Messuhrenfabrik GmbH & Co. KG  
Hahnstraße 11  
D-78054 Villingen-Schwenningen

Factory and administration:  
Hahnstraße 11  
78054 Villingen-Schwenningen  
Phone: +49 (0) 7720/8341-0  
Fax: +49 (0) 7720/21868  
E-Mail: [info@kaefer-messuhren.de](mailto:info@kaefer-messuhren.de)  
Internet: [www.kaefer-messuhren.de](http://www.kaefer-messuhren.de)

Your partner for highest precision.