

SNC

STAC SUBMERSIBLE NON-CLOG
SEWAGE PUMP
SNC SERIES



- Waste water treatment for all industries.
- Civil construction site water transfer.
- Factories sewage waste water transfer.
- Food processing waster water treatment.
- Liquid with large solids.

STAC

Submersible Non-clog Sewage Pump SNC Series

Feature

- Bigger Solid Passage by truly non-clog new impeller design.
- Heavy duty cast iron casing assures longer life of operation.
- Dry motor with built-in thermal protector to protect the motor.
- Double mechanical seal in oil chamber for better abrasion resistant and corrosion-proof performance.

Applications

- Waste water treatment for all industries.
- Civil construction site water transfer.
- Factories sewage waste water transfer.
- Food processing waste water treatment.
- Liquid with large solids.

Material

- Casing : Cast iron
Impeller : Cast iron
Shaft : Stainless Steel
Seal : Double Mechanical Seal (Ceramic x Carbon & Sic x Sic)
Max Depth of Water : 8 m

SNC standard accessories

- 1 pc. Motor cable 5 m
- 1 pc. Chain (Galvanized steel)
- 1 pc. Mating flange with packing and bolts.

SNC optional accessories

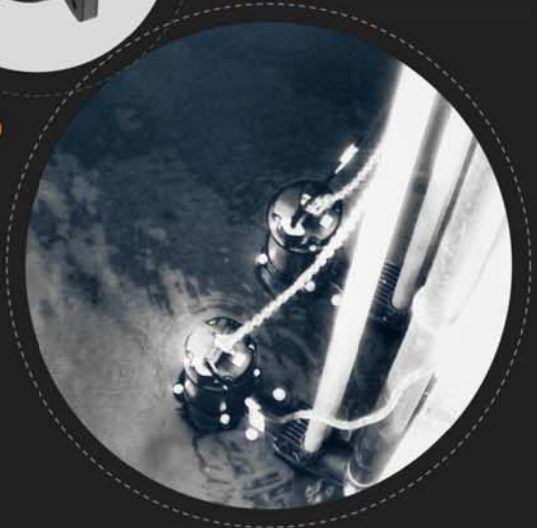
- Extended cable 10m, 15m, 20m, 30m
- Control Box (Indoor or Outdoor).



ADC

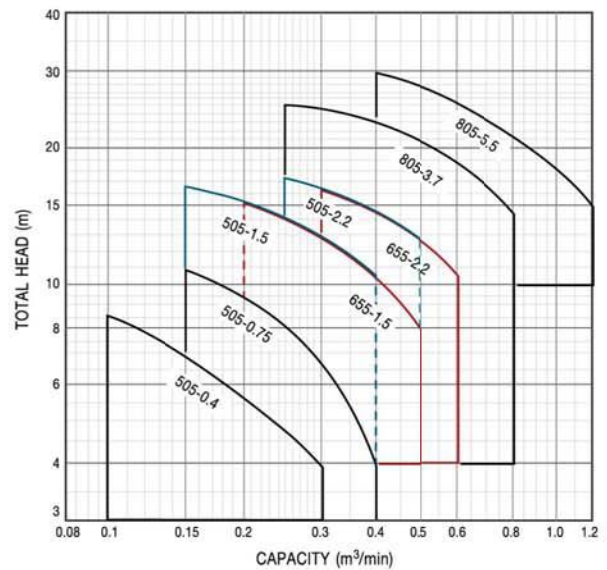


BEND





Performance curve



Motor Specification

Dry type motor : 2 poles
Insulation : Class F
Protection : IP68
Frequency : 50Hz
Voltage : 1 Ø 220V
 3 Ø 380V

Max Solid Passage

Pump Outlet (mm)	Ball Shape (mm)
50	35
65	35
80	40

Operating Data

- Waste water and sewage water
- Liquid temperature 0°C upto 40°C
- Liquid pH 5-9

Model Explanation

SNC-505-0.4T

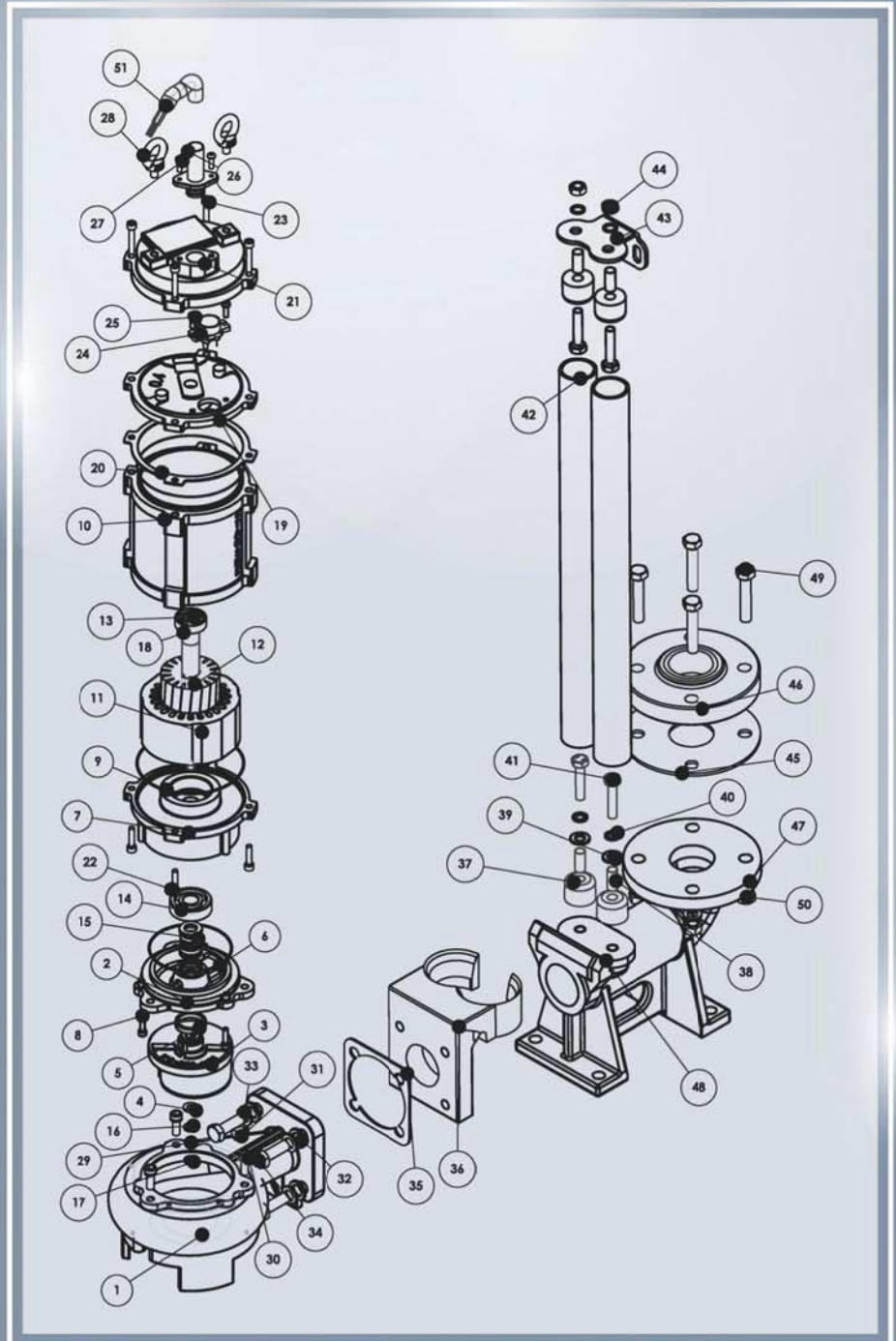
T = Three phase
M = Single phase
0.4 = 0.4 kW
5 = 50 Hz
50 = 50 mm discharge diameter
SNC = Submersible Non-Clog Centrifugal Pump

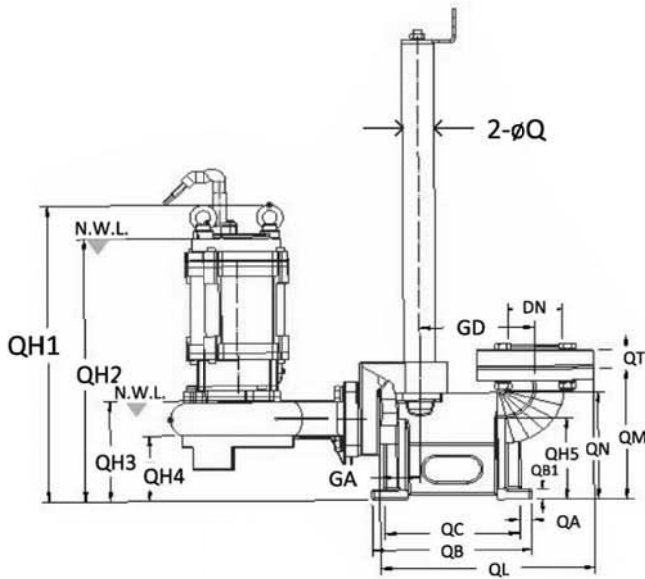
Performance Capacity

MODEL	HP	kW	FLOW (LPM)	100	150	200	250	300	400	500	600	800	1000	1200
SNC-505-0.4M/T	0.5	0.4	HEAD (m)	8	6.7	5.9	4.6	3.8						
SNC-505-0.75M/T	1.0	0.75			10.5	9.2	8.2	6.8	4					
SNC-505-1.5T	2.0	1.5			16.2	15.2	14.2	12.9	10.5					
SNC-655-1.5T	2.0	1.5				15.2	14.2	12.9	10.5	8.2				
SNC-655-2.2T	3.0	2.2					17	16.4	14.6	12.5				
SNC-805-2.2T	3.0	2.2						16.4	14.6	12.5	10.2			
SNC-805-3.7T	5.0	3.7						25	22.9	20.5	18.6	14.4		
SNC-805-5.5T	7.5	5.5							30	27.5	25.5	22	17.5	12.6

Part List

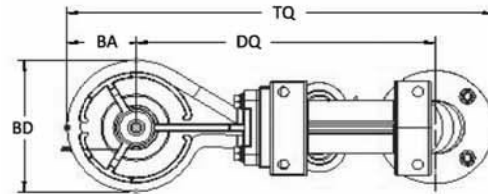
NO	PART NAME	MATERIAL
1	CASING	STEEL
2	CASING COVER	STEEL
3	IMPELLER	STEEL
4	WASHER	SUS304
5	BUSH	BRASS
6	O-RING	RUBBER
7	MECHANICAL SEAL HOUSING	STEEL
8	HEX SOCKET HEAD CAP SCREW	SUS304
9	O-RING	RUBBER
10	MOTOR CASING	STEEL
11	STATOR PACKET	STEEL
12	ROTOR BODY	STD
13	SHAFT	420J
14	BEARING	STD
15	MECHANICAL SEAL	STD
16	WASHER SPRING	SUS304
17	NUT	SUS304
18	BEARING	STD
19	UPPER BEARING HOUSING	STEEL
20	GASKET PUMP COVER	RUBBER
21	PUMP COVER	STEEL
22	HEX SOCKET HEAD CAP SCREW	SUS304
23	HEX SOCKET HEAD CAP SCREW	SUS304
24	OVERLOAD	STD
25	PAN HEAD CAP SCREW	SUS304
26	CABLE GRAND	STD
27	HEX SOCKET HEAD CAP SCREW	SUS304
28	LIFTING EYE BOLT	SUS304
29	KEY4X4X12	STEEL
30	HEX SOCKET HEAD CAP SCREW	SUS304
31	THREADED PLUG	STEEL
32	WASHER	SUS304
33	SPRING WASHER	SUS304
34	SCREW	SUS304
35	GASKET FLANGE OUTLET	RUBBER
36	SUPPORT PUMP	STEEL
37	CUSHION	RUBBER
38	BUSH	SUS304
39	WASHER	SUS304
40	SPRING WASHER	SUS304
41	SCREW	SUS304
42	PIPE	STEEL
43	SUPPORT	STEEL
44	NUT	SUS304
45	GASKET	RUBBER
46	FLANGE	STD
47	SPRING WASHER	SUS304
48	ADC	STEEL
49	SCREW	SUS304
50	NUT	SUS304
51	CABLE	STD





Cable VCT 3-1G (3Phase)

0.4 kW	= 4 x 1.5 mm ² x 5 m length
0.75 kW	= 4 x 1.5 mm ² x 5 m length
1.5 kW	= 4 x 1.5 mm ² x 5 m length
2.2 kW	= 3x2.5, G-1.5 mm ² x 5 m length
3.7 kW	= 3x2.5, G-2.5 mm ² x 5 m length
5.5 kW	= 3x4.0, G-2.5 mm ² x 5 m length

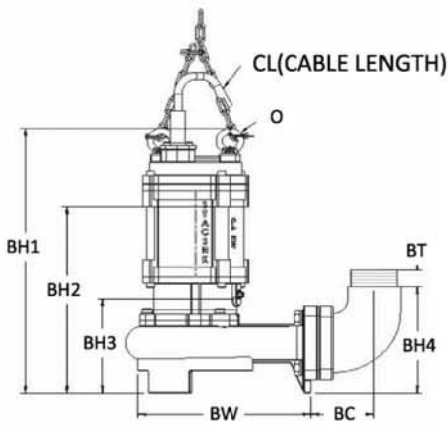


Dimensions

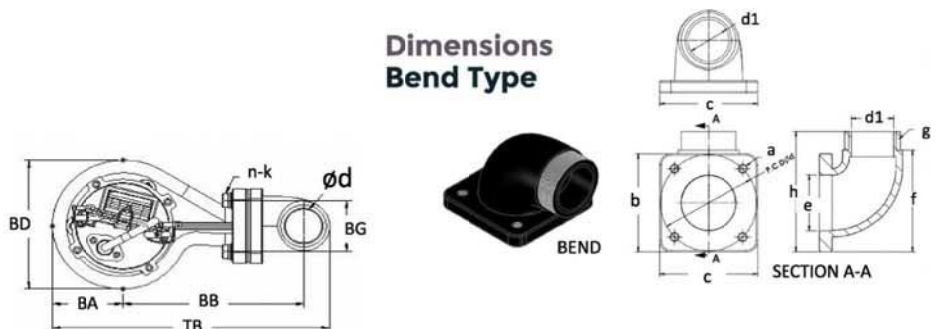
ADC Type (Automatic Discharge Connector)

MODEL	TQ (mm.)	BD (mm.)	BA (mm.)	DQ (mm.)	QH1 (mm.)	QH2 (mm.)	QH3 (mm.)	QH4 (mm.)	DN (mm.)	Q (mm.)	PUMP (kgs.)
SNC-505-0.4T	525	180	90	390	434	320	180	81	50(PT2)	2x32A	18.5
SNC-505-0.75T	575	200	100	388	437	345	185	81	50(PT2)		21
SNC-505-1.5T	620	230	117	410	497	350	220	95	50(PT2)		31
SNC-665-1.5T	620	230	117	410	497	350	220	95	65(PT2 1/2)	2x40A	31
SNC-665-2.2T	677	270	135	450	660	500	270	115	65(PT2 1/2)		55
SNC-805-2.2T	677	270	135	450	660	500	270	115	80(PT3)		55
SNC-805-3.7T	677	270	135	450	660	500	270	115	80(PT3)	55	
SNC-805-5.5T	720	320	160	465	693	496	276	112	80(PT3)	80	

MODEL	GD (mm.)	GA (mm.)	QT (mm.)	QM (mm.)	QN (mm.)	QH5 (mm.)	QB1 (mm.)	QA (mm.)	QC (mm.)	QB (mm.)	QL (mm.)	ADC (kgs.)
ADC 50-65	120	50	27	190	141	110	15	17	180	210	260	15
ADC 65-80	140	60	33	250	192	147	18	17	210	246	300	20



Dimensions Bend Type



MODEL	BB (mm.)	TB (mm.)	BA (mm.)	BD (mm.)	BW (mm.)	ød (mm.)	BH1 (mm.)	BH2 (mm.)	BH3 (mm.)	BEND				OTHER			PUMP (kgs.)	
										BH4 (mm.)	BC (mm.)	BG (mm.)	BT (mm.)	N	K	O		CL (m.)
SNC-505-0.4T	230	355	90	180	225	50	376	135	265	150	81	71	24	4	M12	M8	5	18.5
SNC-505-0.75T	213	342	100	200	214	50	432	142	300	150	81	71	24	4	M12	M8	5	21
SNC-505-1.5T	247	397	117	230	248	50	465	160	328	150	83	71	24	4	M12	M10	5	31
SNC-655-1.5T	247	397	117	230	248	65	465	160	328	150	83	71	24	4	M12	M10	5	31
SNC-655-2.2T	292	466	135	270	310	65	655	210	456	175	93	92.5	25	4	M12	M10	5	55
SNC-805-2.2T	292	466	135	270	310	80	655	210	456	175	93	92.5	25	4	M12	M10	5	55
SNC-805-3.7T	296	478	135	270	310	80	618	210	454	164	93	92.5	25	4	M12	M10	5	55
SNC-805-5.5T	312	517	160	320	260	80	641	210	487	164	162	92.5	25	4	M12	M12	5	80

MODEL	a (mm.)	b (mm.)	c (mm.)	d1 (mm.)	e (mm.)	f (mm.)	g (inch)	h (mm.)	P.C.D.ød (mm.)	BEND (kgs.)
BEND-50	M12	105	105	47	70	133	2	157	100	2.3
BEND-65	M12	132	132	56	75	137	2(1/2)	162	130	3.5
BEND-80	M12	132	132	67	87	136	3	161	130	4