

# EFFER

## MARINE CRANES



MADE IN ITALY



### RANGE OF APPLICATION

Effer cranes are suitable for a wide range of applications, designed for deck operations, shipboard or offshore platforms and more.

Effer cranes are also perfect for the installation on :

- Supply and naval vessels
- Dredgers, dockside
- Research ships



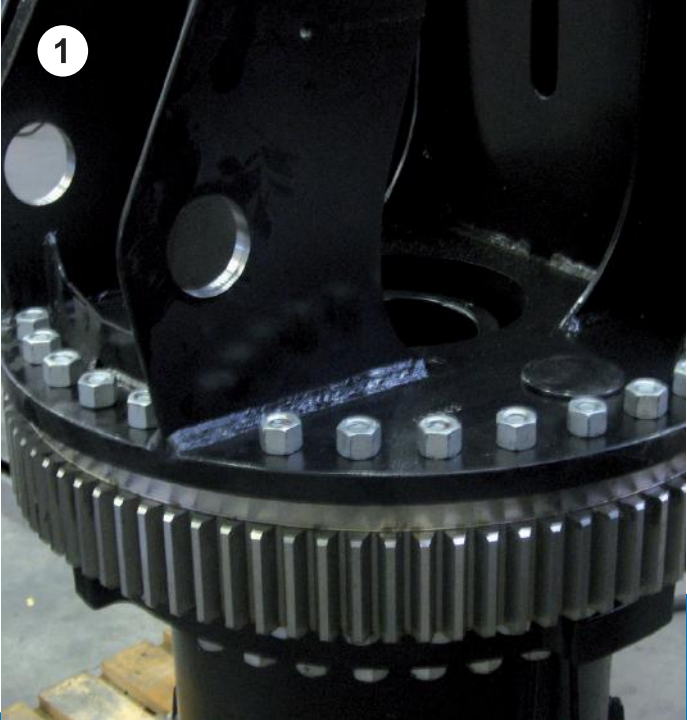
[www.temton.co.th](http://www.temton.co.th)



## LONG LASTING

### TOP PERFORMANCE REQUIRES CRANES TO BE MADE WITH EFFICIENT PRODUCTION PROCESSES

1. All steel components are shot-blasted and protected with a full marine protection cycle that includes, in our models up to 80 t<sub>xm</sub>, a fully automated cathaphoresis process in order to protect even the less accessible points of the structures.



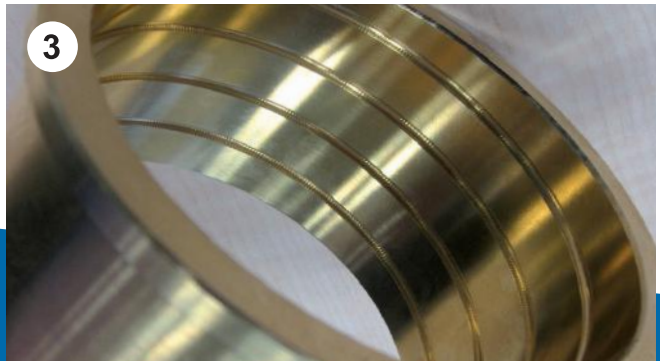
### STRONG CABLES

2. Effer uses **anti-twist galvanized** and greased **steel cables** to ensure maximum performance in every working condition, and long durability over time.



### PINS BUSHES

3. For each pins on the cranes, Effer uses **bronze bushes** designed for **long life** and to guarantee the maximum performance of the crane, also with hard working conditions.



## MADE IN ITALY MANUFACTURING PROCESS

4. Effer uses **PRO-ENGINEERING** and **ANSYS** software FEM (Finite Elements Method) during its design process.

Effer's **50-year know-how** in the segment of **high strength material welding** allows to carry out very complex processing - even in the production of small and medium range cranes.



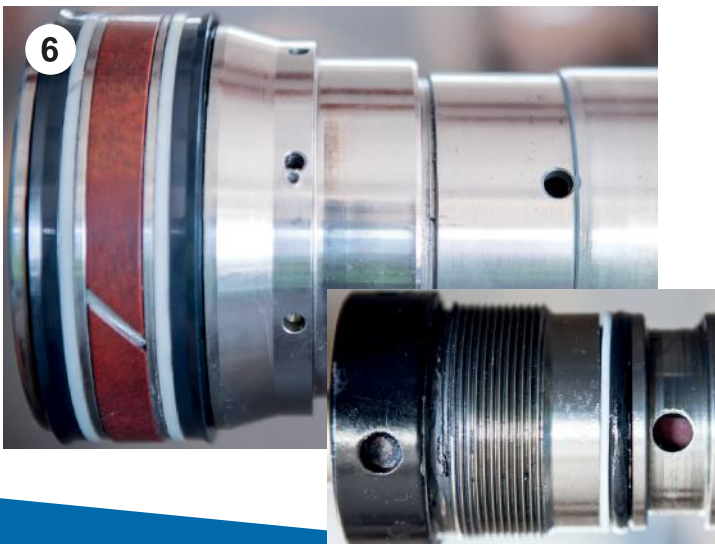
## ROTATION SYSTEM

5. Powerful and precise slewing using either rack and pinion or slewing ring systems. All our models offer the possibility to double the slewing system in order to increase the efficiency in case of heavy working conditions.



## THE BEST HYDRAULIC SEALS ON THE MARKET

6. All seals used in Effer cranes' hydraulic system are **the best** in their category.



## EASY WORK

### CENTRALIZED GREASING SYSTEM

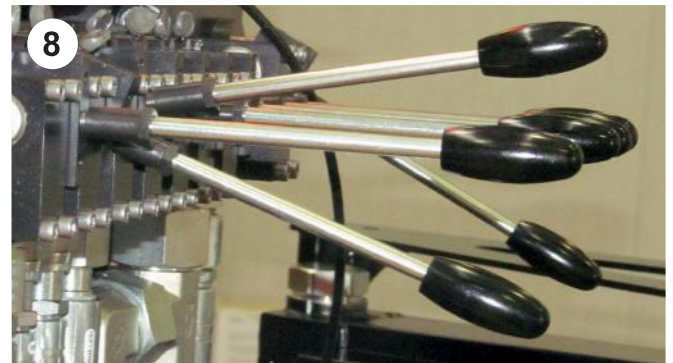
7. Effer cranes have greasing points to keep them efficiently operating and to preserve moving parts over the years.

A central greasing system is available as an option to simplify maintenance operations, granting a sure oversight of whole crane.



### CONTROL VALVE

8. Every crane takes advantage of a control valve with internal compensation. With this solution, it's possible to make more movements at the same time. For this purpose we rely on the cooperation of worldwide producers (Hawe and Danfoss).

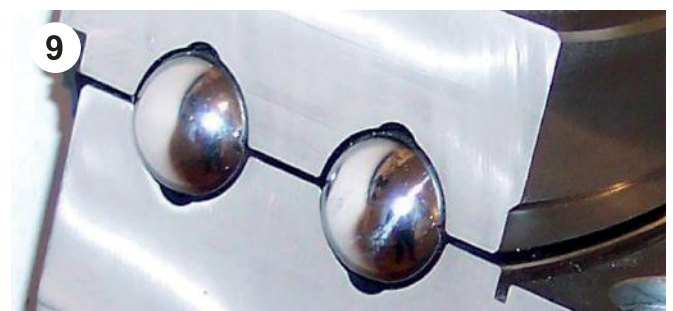


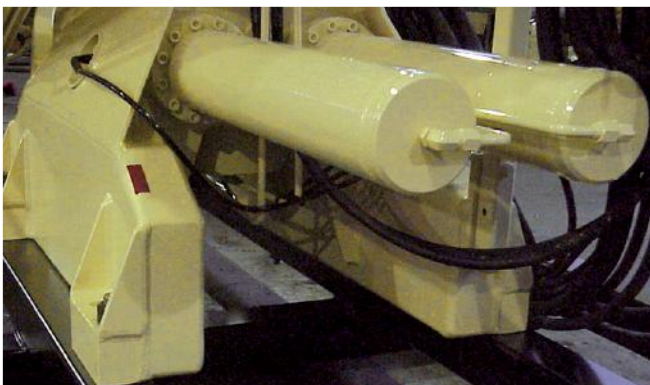
### SLIPPING SOFTLY

9. Effer cranes' rotation bearing is equipped with a **leak-tight seal between the rotary rings**, to prevent water and dust entering in the tracks

All Effer rotation bearings are fastened by means of **high resistance screws tightened with a dynamometric wrench**.

Effer rotation bearing uses **two revolutions of ball bearings** to reduce to a minimum the rotation friction.





## STANDARD SUPPLY

- Rotation by slewing ring and hydraulic motor reduction gears or by racks and pinion.
- Emergency stop button
- Load moment limit device
- Extension cylinders with sequence valves
- Support plate for winch on 2nd boom
- Cylinder rods with marine double chromium plating or Nikrom
- Pins protected with Geomet plating
- Pipes and relevant fittings in stainless steel AISI 316L
- High Ozone and weather resistance hoses
- Hoses with galvanized fittings protected with heat shrunk shroud
- Other fittings galvanized and painted
- Bolts and screws are either in stainless steel or protected with Geomet plating
- Marine painting cycle with cataphoresis or zinc primer (RAL 1014)
- Hook
- Design according to UNI EN 12999
- Fixing kit
- Proportional control bank with supplementary control for winch





# ACCESSORIES

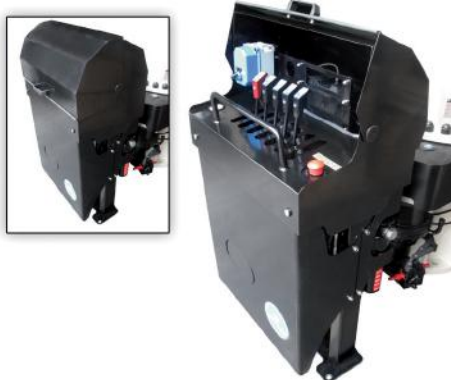
## << REMOTE CONTROLS SCANRECO

Our cranes can be delivered with high quality remote control systems, available either as cable remote or radio remote control system.



## CONTROLS ON PLATFORM WITH SEAT >>

Controls of the crane on column side are available on some of our models. For these cranes we propose the continuous slewing system.



## << STANDING CONTROLS

The control valve block is supplied with stand-alone controls for free installation close to the crane.

## CABIN >>

Where the environmental conditions, it's available a cabin with crane's controls put inside. There are many options to equip the cabin (air conditioned, heaters, external protection, etc.).



## << WINCH KIT

Installation of different types of winch, offering lifting capacities and speeds according to customers and Classifications Societies requirements.

## POWER PACK >>

All our models can be delivered with Hydraulic Power Packs engineered to withstand the most aggressive marine environments and can be equipped with a variety of accessories, including oil heaters, oil coolers, pump in load sensing execution..



## << HEAD PULLEY WITH MULTIPLE LINES

Each application needs different solutions to lift the loads. We can supply the winch kit with different type of pulley at the end of the boom based on customer's real needs.



## LOAD CELL AND DISPLAY >>

As important option, it's available on request a shackle with load cell and transmitter. The value of the load is directly displayed either on remote control and electric console on station.



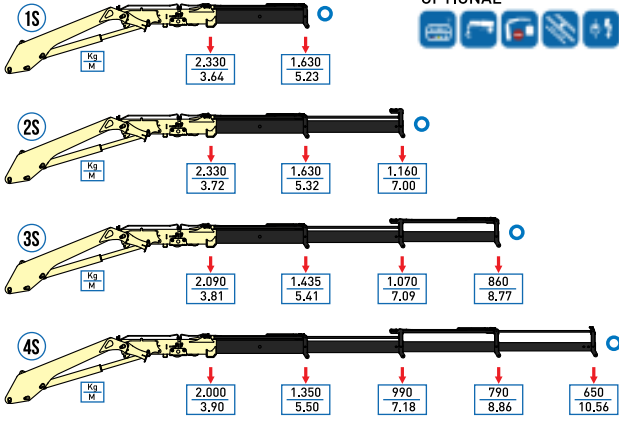
# FOLDABLE KNUCKLE BOOM

## 85M

STANDARD



OPTIONAL

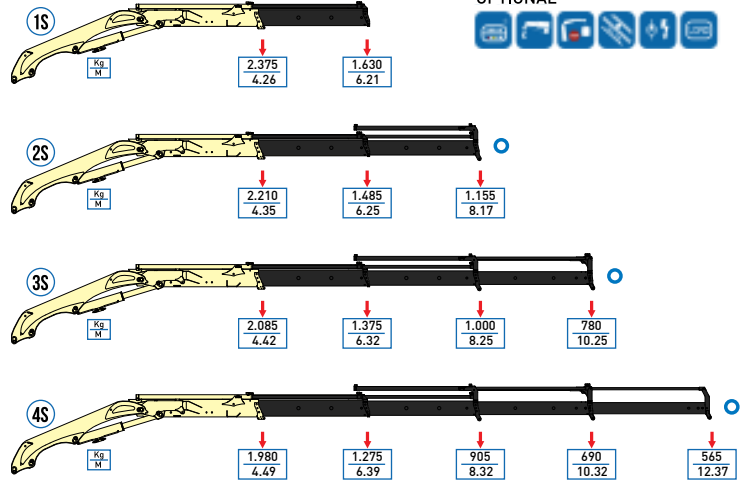


## 110M

STANDARD



OPTIONAL

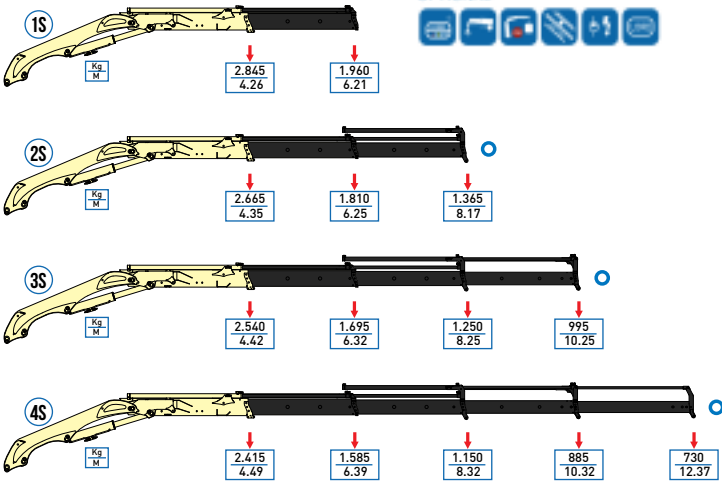


## 130M

STANDARD



OPTIONAL

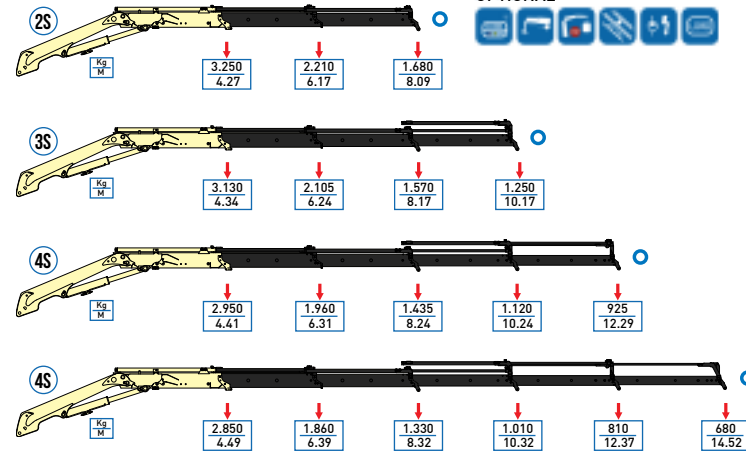


## 155M

STANDARD



OPTIONAL



manual extension available



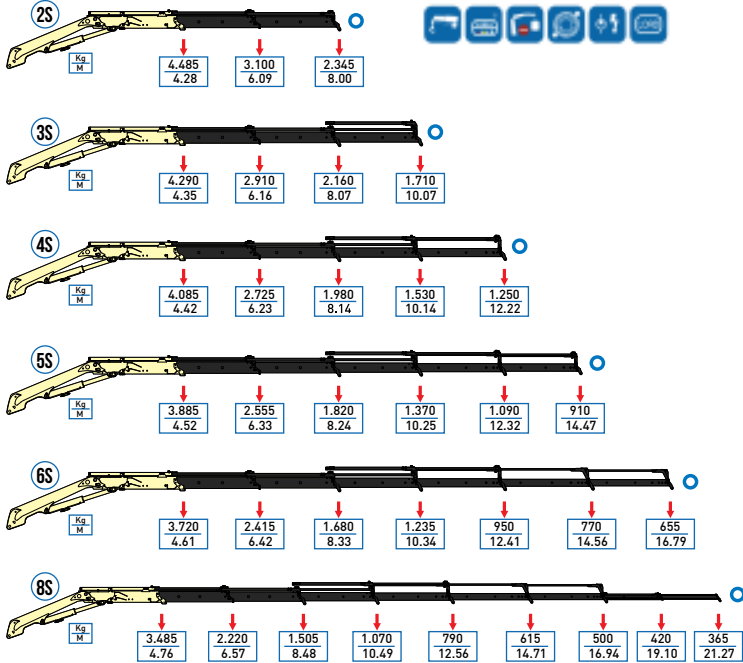
## FOLDABLE KNUCKLE BOOM

### 220M

STANDARD



OPTIONAL

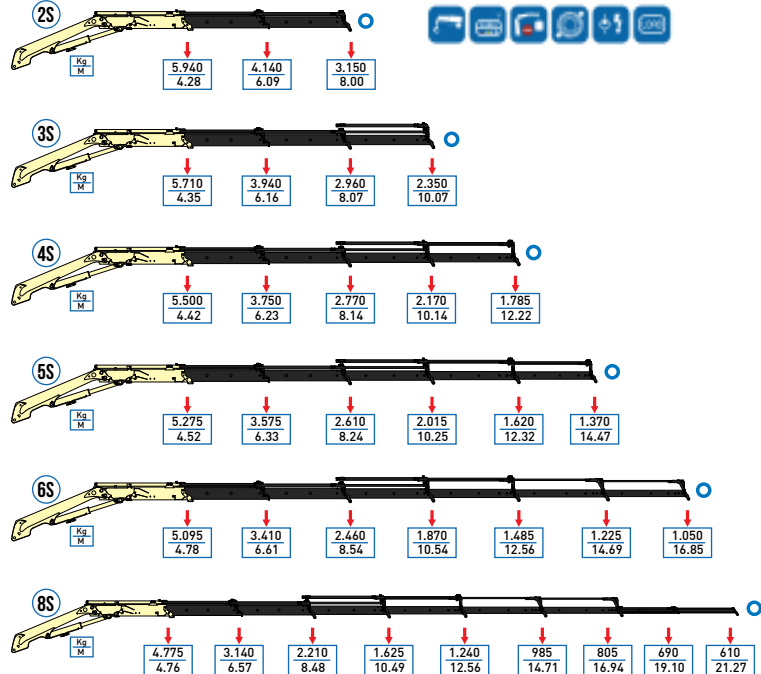


### 275M

STANDARD



OPTIONAL



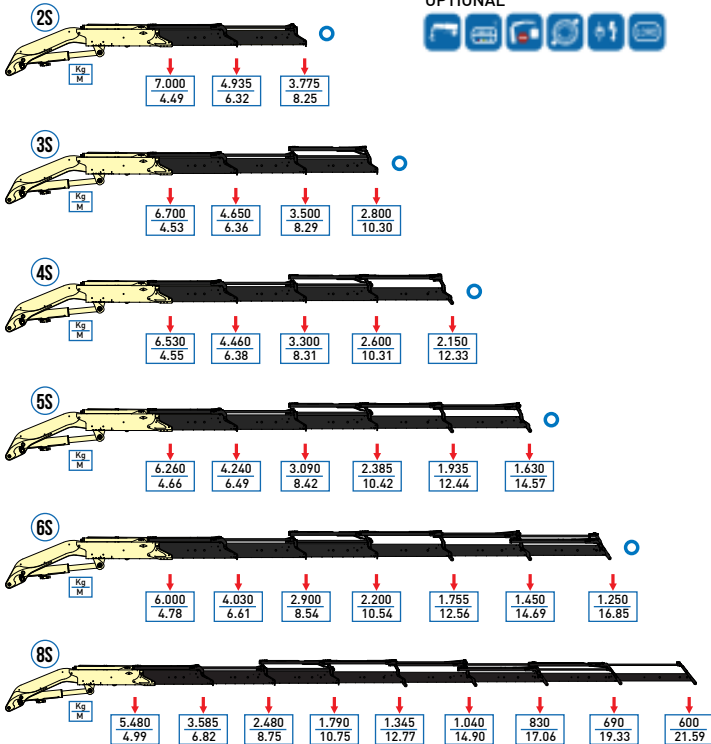
○ manual extension available

### 340M

STANDARD



OPTIONAL

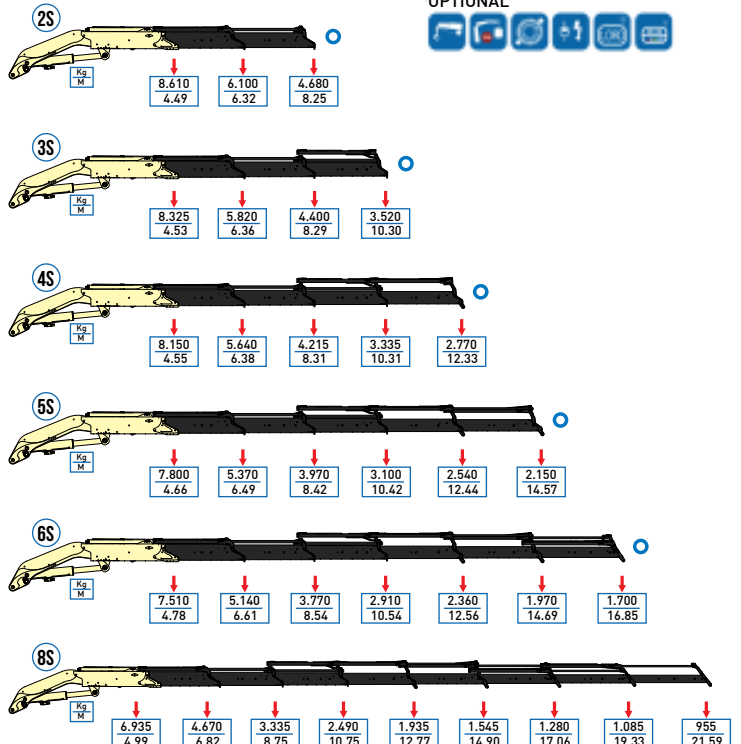


### 440M

STANDARD



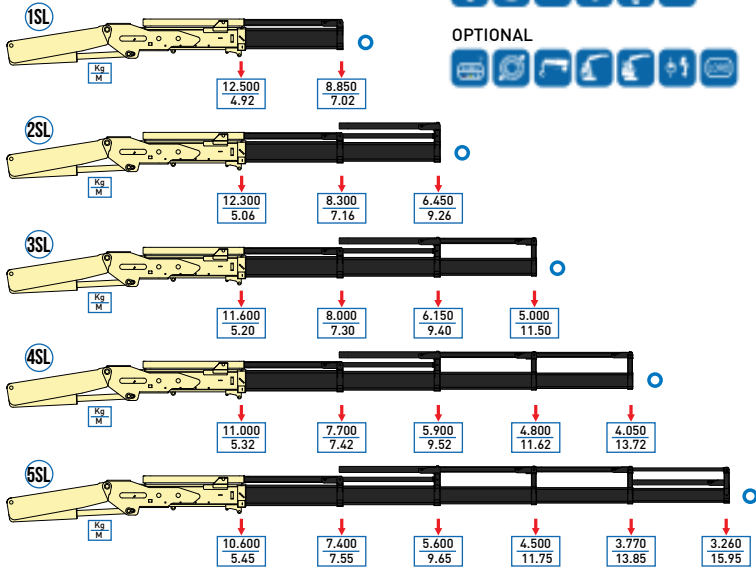
OPTIONAL



### KNUCKLE BOOM

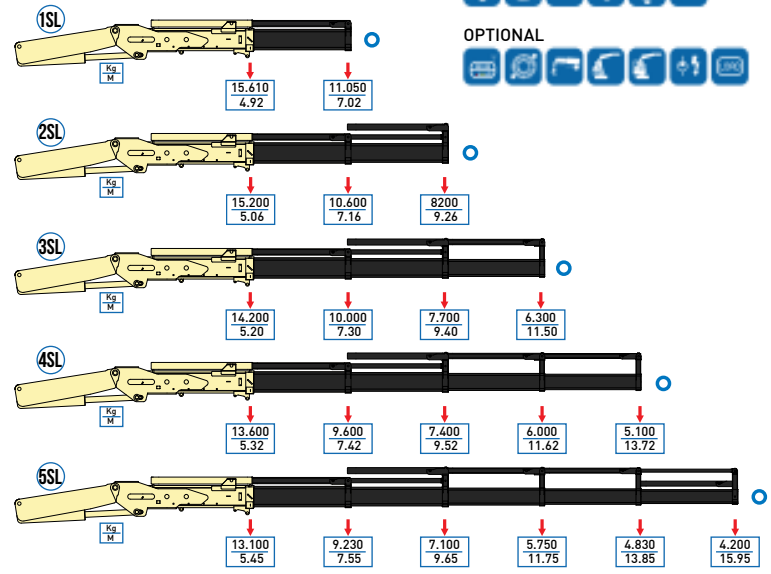
#### 65000

- STANDARD
- - 
  - 
  - 
  - 
  -
- OPTIONAL
- - 
  - 
  - 
  - 
  -



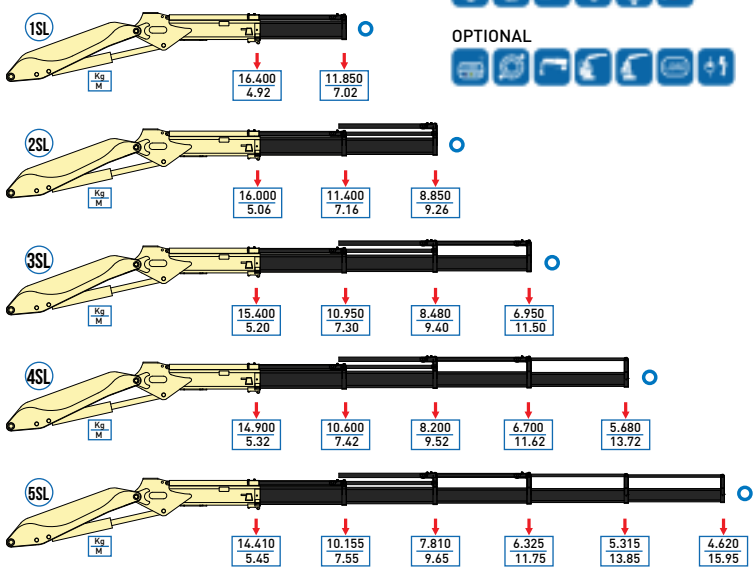
#### 80000

- STANDARD
- - 
  - 
  - 
  - 
  -
- OPTIONAL
- - 
  - 
  - 
  - 
  -



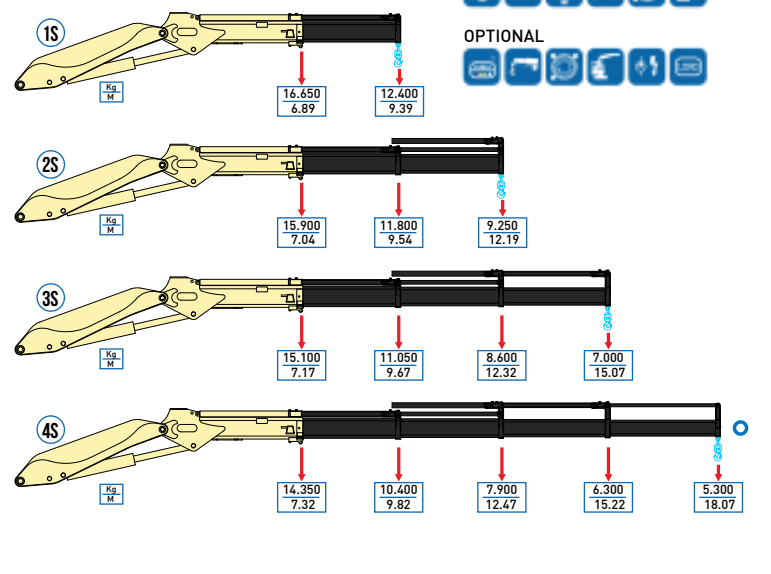
#### 100000

- STANDARD
- - 
  - 
  - 
  - 
  -
- OPTIONAL
- - 
  - 
  - 
  - 
  -



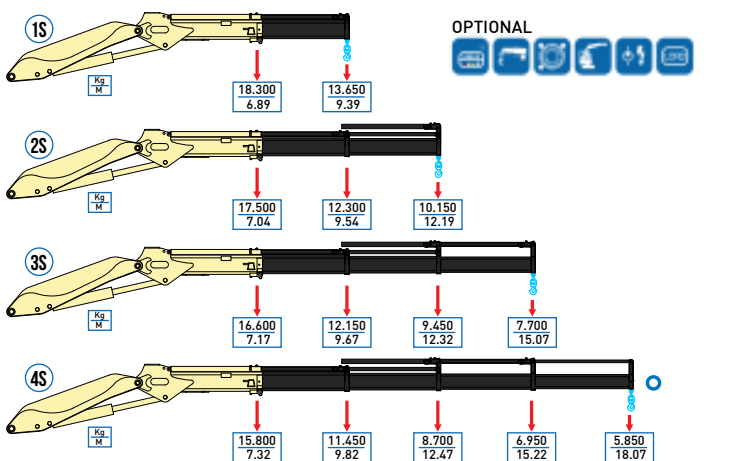
#### 125000

- STANDARD
- - 
  - 
  - 
  - 
  -
- OPTIONAL
- - 
  - 
  - 
  - 
  -



#### 145000

- STANDARD
- - 
  - 
  - 
  - 
  -
- OPTIONAL
- - 
  - 
  - 
  - 
  -



manual extension available





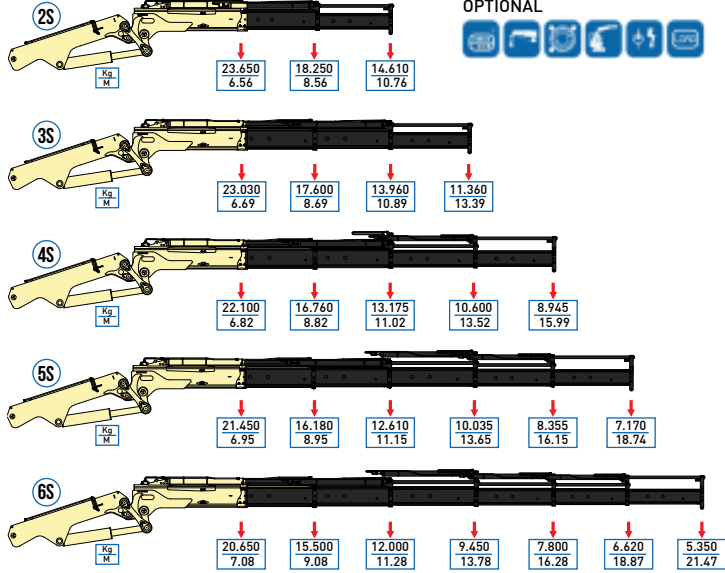
# KNUCKLE BOOM

## 175000

STANDARD



OPTIONAL

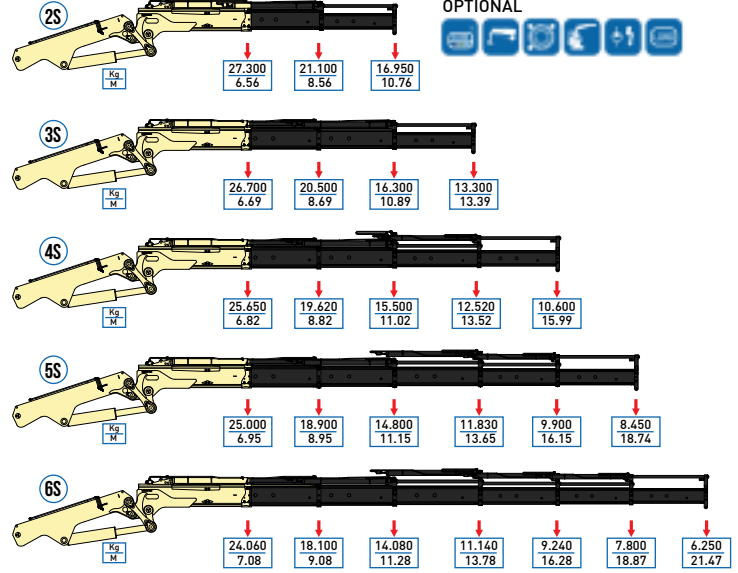


## 200000

STANDARD



OPTIONAL

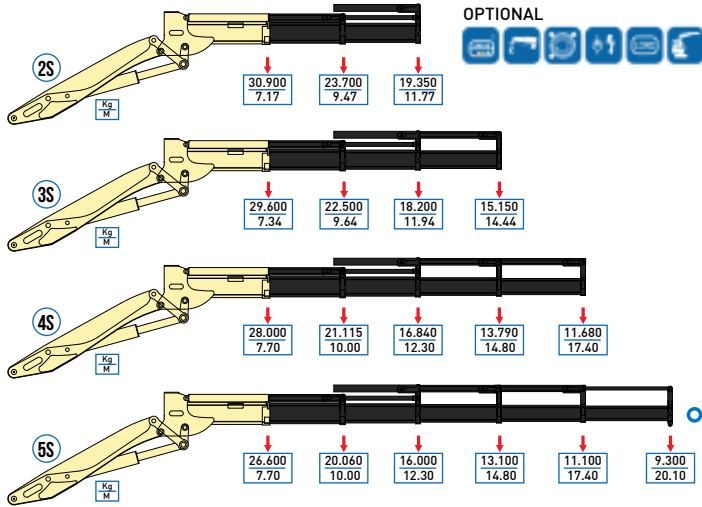


## 245000

STANDARD



OPTIONAL

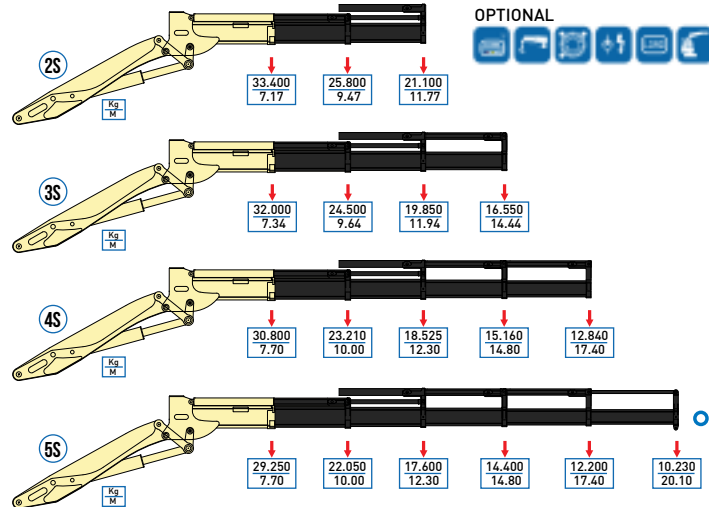


## 275000

STANDARD



OPTIONAL

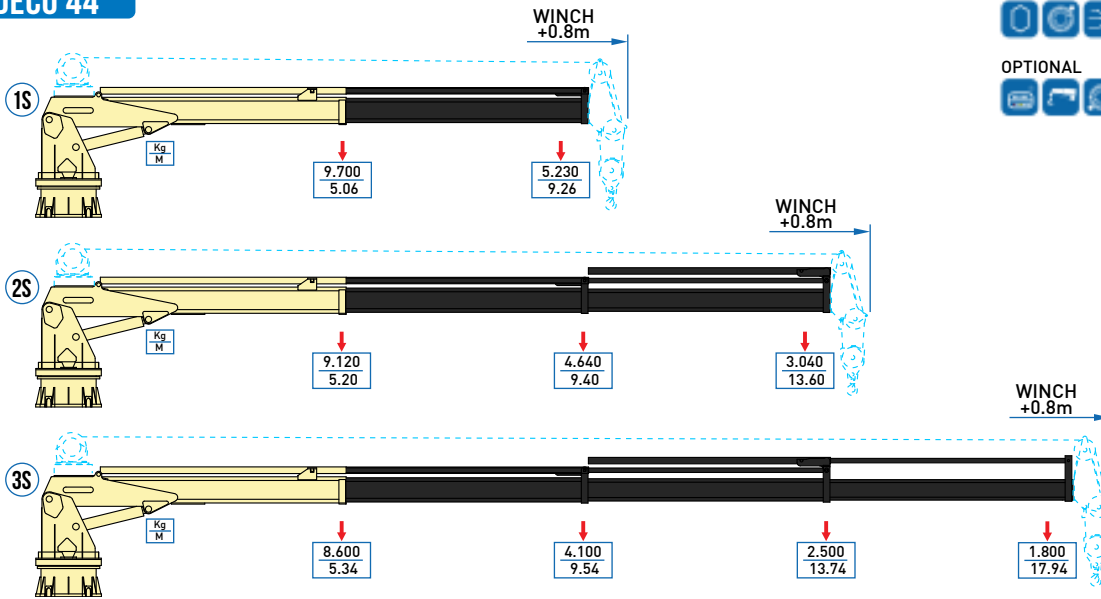


○ manual extension available



# TELESCOPIC BOOM

## DECO 44



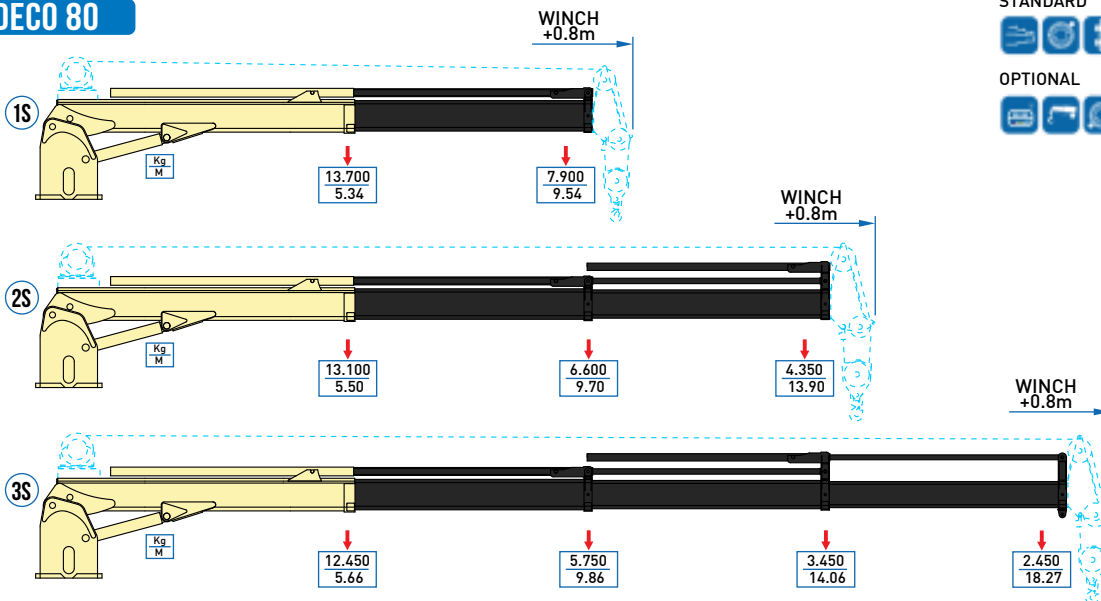
STANDARD



OPTIONAL



## DECO 80



STANDARD

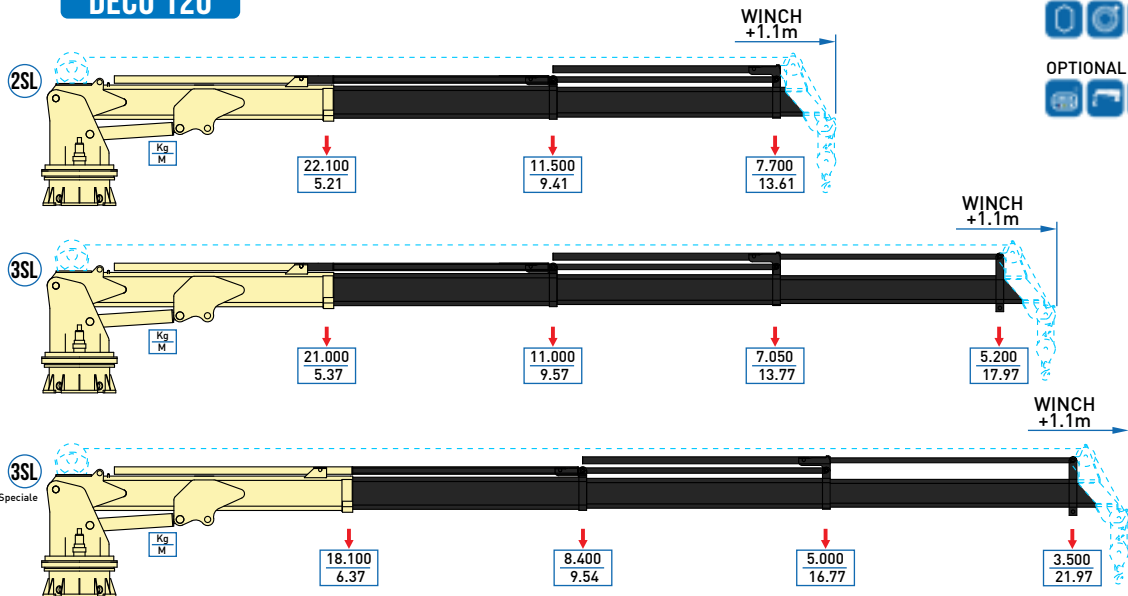


OPTIONAL



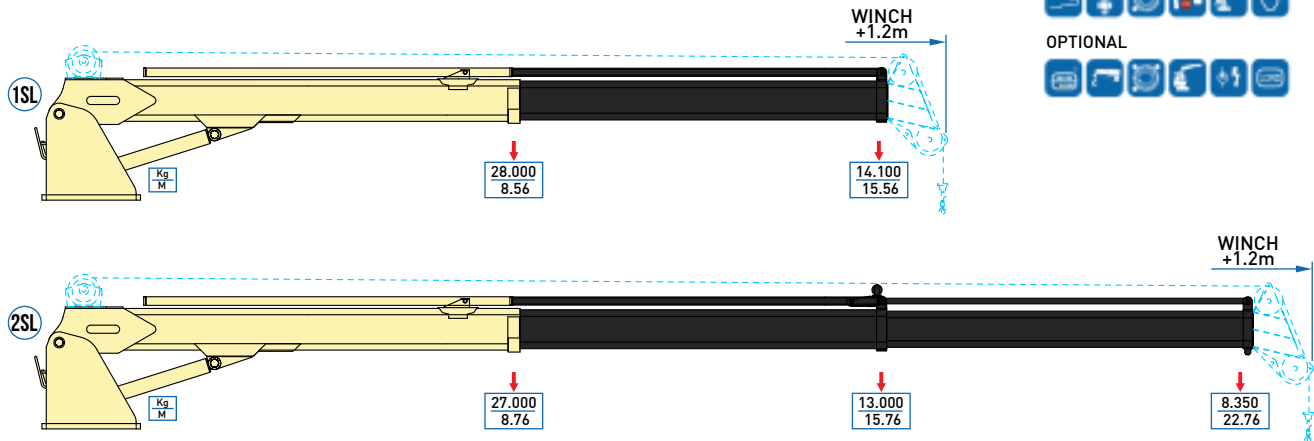
## TELESCOPIC BOOM

### DECO 120



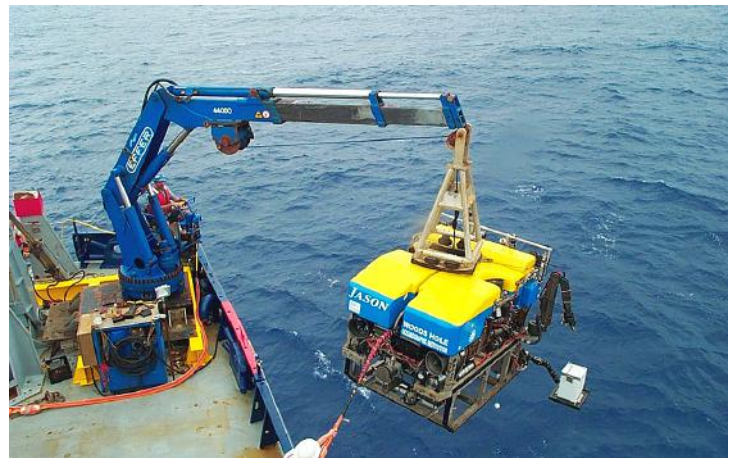
- STANDARD
- [Icon]
  - [Icon]
  - [Icon]
  - [Icon]
  - [Icon]
- OPTIONAL
- [Icon]
  - [Icon]
  - [Icon]
  - [Icon]
  - [Icon]

### DECO 240



- STANDARD
- [Icon]
  - [Icon]
  - [Icon]
  - [Icon]
  - [Icon]
- OPTIONAL
- [Icon]
  - [Icon]
  - [Icon]
  - [Icon]
  - [Icon]





**TEMTON**  
TEMTON CO., LTD.

บริษัท เต็มตัน จำกัด

1/19 ม. 1 ต. พิมพา อ. บางปะกง จ. ฉะเชิงเทรา 24180 (ประเทศไทย)

โทรศัพท์. 097-248-2251, 52, 53 แฟกซ์. 038-571-665

อีเมล. effer.marinecrane@gmail.com www.temton.co.th