

ROYAL STONE (450mm square)

category: solid vinyl tile

ROYAL STONE is TOLI's stone-look solid vinyl tile range that has variety of sizes and authentic designs. Green product with "ECO Mark"-certified.



Recycle



Specification	overall thickness3.0mm		size450mm×450mm
	othersSurface Clear Wear Layer 0.3mm / PST3079 · PST3082 · PST3085 · PST3088 · PST3091 Round-Beveled / Other Colors No Beveling		
Packing	14pcs/box = 2.83m²/box		DimensionW 462mm × L 473mm × H 51mm
Net Weight	14.7kg/box		
Performance	Wear Resistance	(EN649) Group T	
Recommended Adhesive from TOLI	dried mortar and concrete	Eco AR600	
	humid mortar and concrete	Epo Gray ST, US Cement, US Cement (less-smelly), US200, US300T	
Notes on Installation	♦Before installation, make sure the arrow marks on the back of each tile, which show the direction of the pattern. ♦For one week after installation, direct sunlight, sudden change of temperature due to air conditioning, and water washing should be avoided. ♦The color shading differs on a tile-by-tile basis, which will make the floor look very natural when the tiles are installed.		
Recommended Maintenance Wax from TOLI	New FB Wax, U Wax, T Wax (Non-shiny & Antibacterial)		
Custom Order	If you ask for a different size or wear layer, please contact TOLI sales rep.		
Others	♦Please be aware that some rubber casters might cause color-contamination. ♦Please note that the product has the indigenous odor from its materials.		

MADE IN JAPAN



PST3109



Based on intensive research on authentic texture of natural stones and wood-grains, realistic natural tones have been reproduced.

The color number marked with ♦ has a Natural Tone pattern.



PST3022



PST3023



PST3025



PST3037 ♦



PST3038



PST3039



PST3040



PST3041



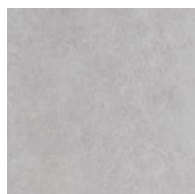
PST3042



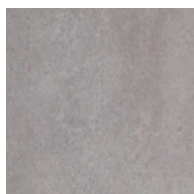
▲ PWT3261 (ROYAL WOOD · page 256)/PST3025

ROYAL STONE (450mm square)

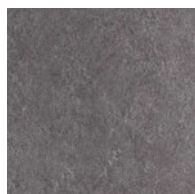
category: solid vinyl tile



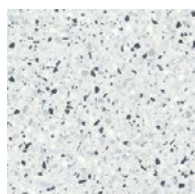
PST3043



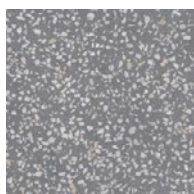
PST3044



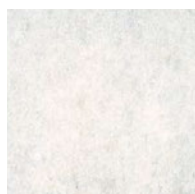
PST3045



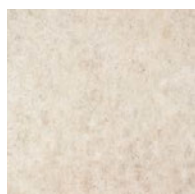
PST3056



PST3057



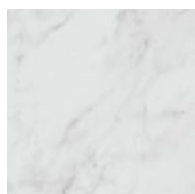
PST3062



PST3063



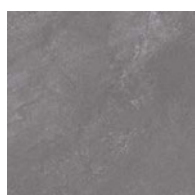
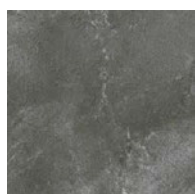
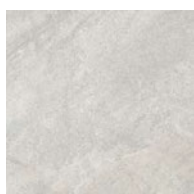
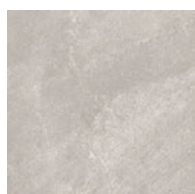
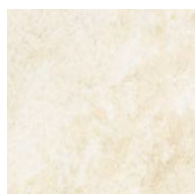
PST3064



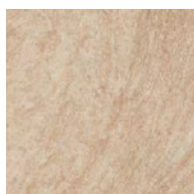
PST3065



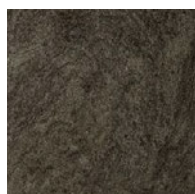
PST3066

PST3079
(Round-Beveled)PST3082
(Round-Beveled)PST3085
(Round-Beveled)PST3088
(Round-Beveled)PST3091
(Round-Beveled)

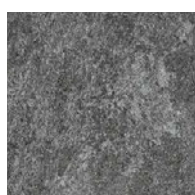
PST3100



PST3101



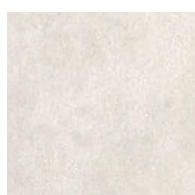
PST3102



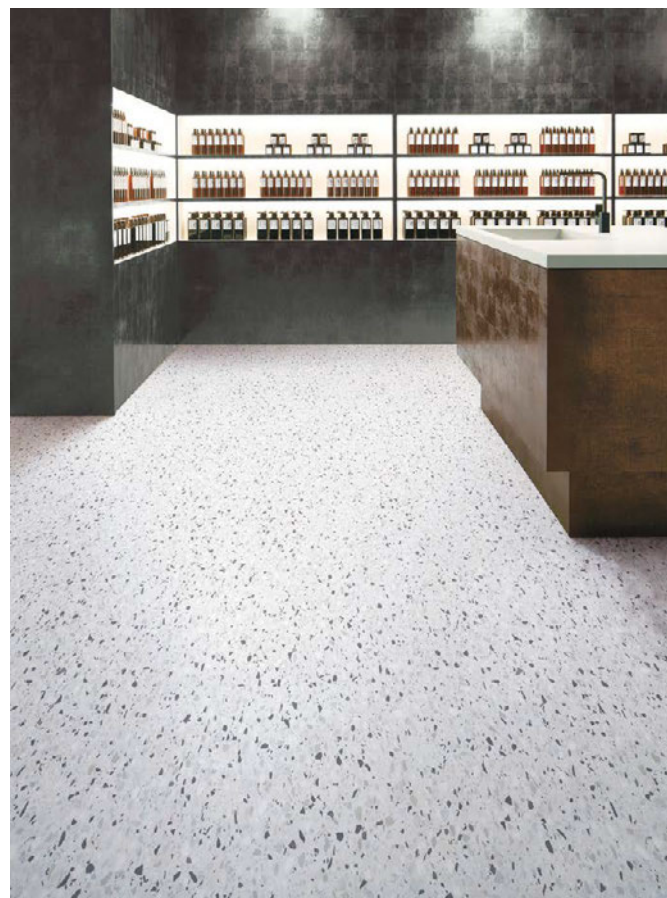
PST3103



PST3104



PST3105



▲ PST3056



▲ PST3085/PST3084 (450mm×900mm · page 241)/PST3086 (300mm×450mm · page 230)

ROYAL STONE

(450mm square)

category: solid vinyl tile

ROYAL STONE is TOLI's stone-look solid vinyl tile range that has variety of sizes and authentic designs. Green product with "ECO Mark"-certified.

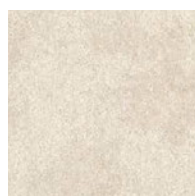


Recycle

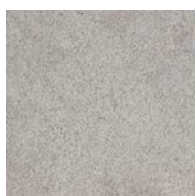


Specification	overall thickness	3.0mm	size	450mm×450mm
	others	Surface Clear Wear Layer 0.3mm		
Packing	14pcs/box = 2.83m²/box		Dimension	W 462mm × L 473mm × H 51mm
Net Weight	14.7kg/box			
Performance	Wear Resistance	(EN649) Group T		
Recommended Adhesive from TOLI	See page 218.			
Notes on Installation	See page 218.			
Recommended Maintenance Wax from TOLI	See page 218.			
Custom Order	See page 218.			
Others	See page 218.			

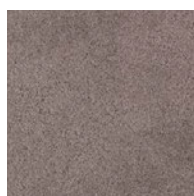
MADE IN JAPAN



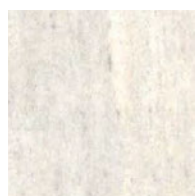
PST3106



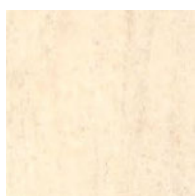
PST3107



PST3108



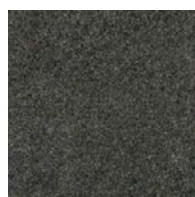
PST3109



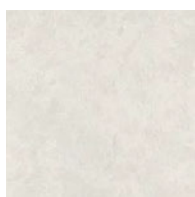
PST3110



PST3111



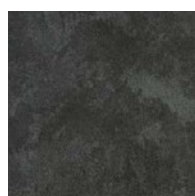
PST3112



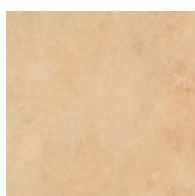
PST3113



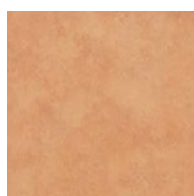
PST3114



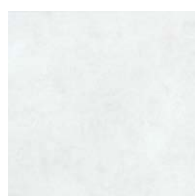
PST3115



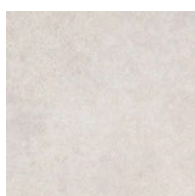
PST3116



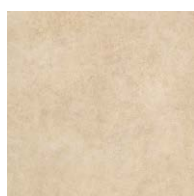
PST3117



PST3133



PST3134



PST3135



▲ PST3111

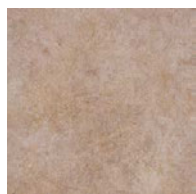
ROYAL STONE (450mm square)

category: solid vinyl tile

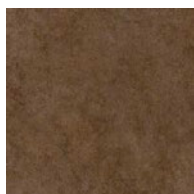
TOLI

Eco-friendly Recycle

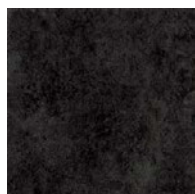
floor
score
by
FloorScore
Institute



PST3136



PST3137



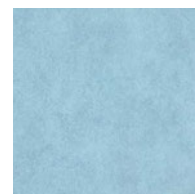
PST3138



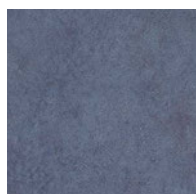
PST3139



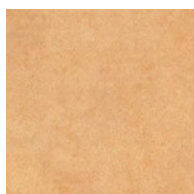
PST3140



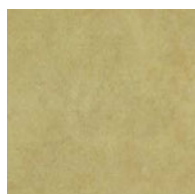
PST3141



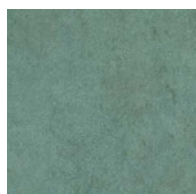
PST3142



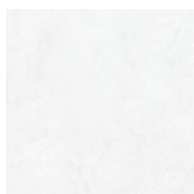
PST3143



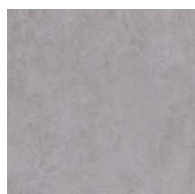
PST3144



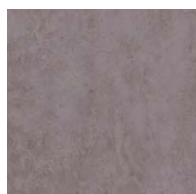
PST3145



PST3146



PST3147



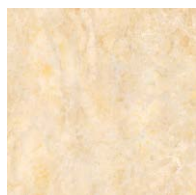
PST3148



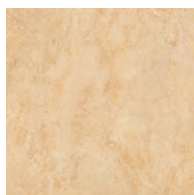
PST3149



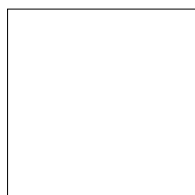
PST3150



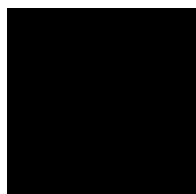
PST3151



PST3152



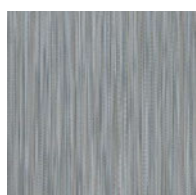
PST3153



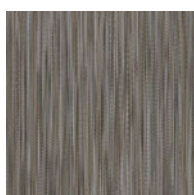
PST3154



PST3155



PST3175



PST3176



PST3177



▲ PST3133/PST3135/PST3137/PST3142



▲ PST3177

Vinyl
Tile

ROYAL STONE LUMINOUS (450mm square)

category: solid vinyl tile

By the sparkling reflection emboss, "Luminous" image is well described.
Green product with "ECO Mark"-certified.



Recycle

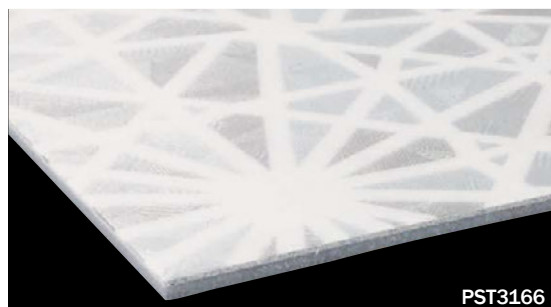


GOOD
DESIGN

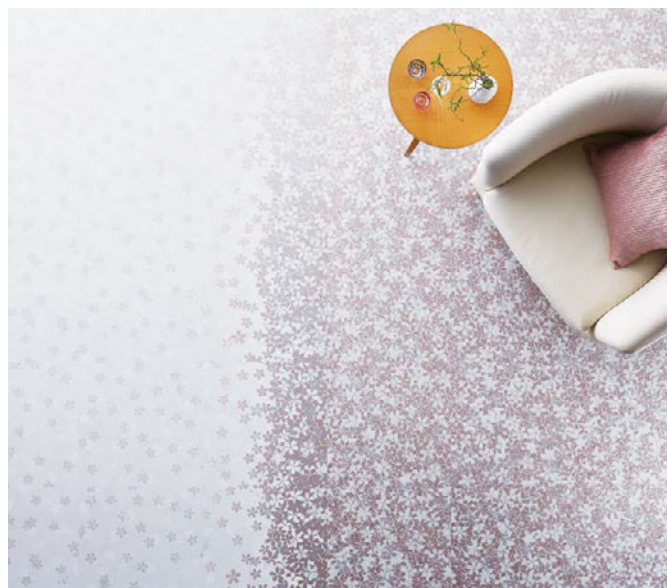


Specification	overall thickness	3.0mm	size	450mm×450mm
	others	Surface Clear Wear Layer 0.3mm		
Packing	14pcs/box = 2.83m²/box		Dimension	W 462mm × L 473mm × H 51mm
Net Weight	14.7kg/box			
Performance	Wear Resistance	(EN649) Group T		
Recommended Adhesive from TOLI	dried mortar and concrete	Eco AR600		
	humid mortar and concrete	Epo Gray ST, US Cement, US Cement (less-smelly), US200, US300T		
Notes on Installation	⬆Before installation, make sure the arrow marks on the back of each tile, which show the direction of the pattern. ⬆For one week after installation, direct sunlight, sudden change of temperature due to air conditioning, and water washing should be avoided. ⬆The color shading differs on a tile-by-tile basis, which will make the floor look very natural when the tiles are installed.			
Recommended Maintenance Wax from TOLI	New FB Wax, U Wax, T Wax (Non-shiny & Antibacterial)			
Others	⬆Please be aware that some rubber casters might cause color-contamination. ⬆Please note that the product has the indigenous odor from its materials.			

MADE IN JAPAN



PST3166



▲ PST3162/PST3163/PST3164



PST3160



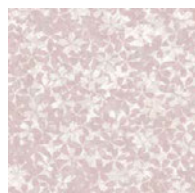
PST3161



PST3162



PST3163



PST3164



PST3165



PST3161



PST3161

Monolithic

Reversed

↑	↑	↑	↓
↑	↑	↑	↓
↑	↑	↑	↓

In PST3161 and PST3163, cherry blossom designs are concentrated in one side of a tile. Just by changing the direction of installation, different floor images can be created.

LVT

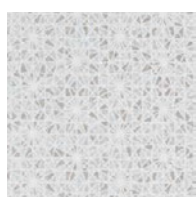
ROYAL STONE LUMINOUS (450mm square)

category: solid vinyl tile

TOLI



▲ PST3166



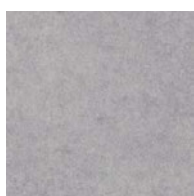
■ PST3166



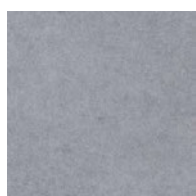
■ PST3167



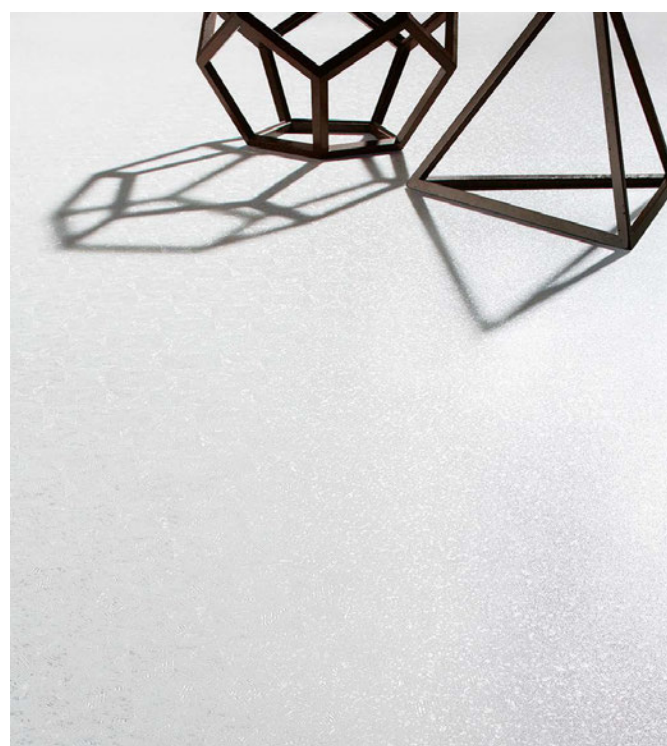
■ PST3168



■ PST3169



■ PST3170



▲ PST3167

ROYAL STONE LUMINOUS (150mm×900mm plank)

category: solid vinyl tile

By the sparkling reflection emboss, "Luminous" image is well described.

Green product with "ECO Mark"-certified.



Recycle

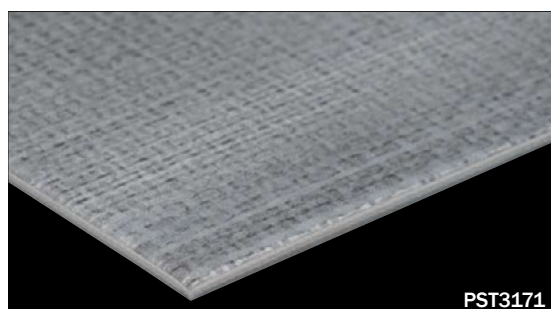


GOOD
DESIGN

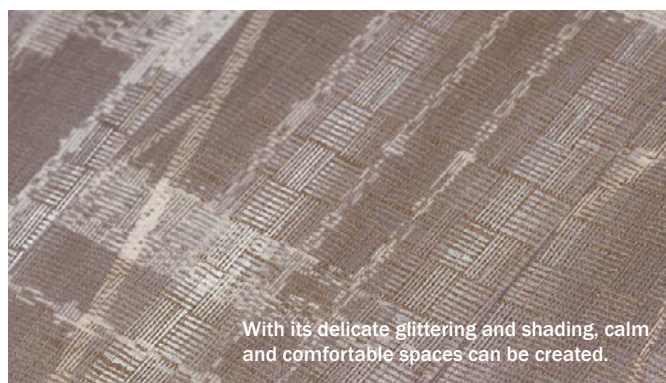


Specification	overall thickness	3.0mm	size	150mm×900mm
	others	Surface Clear Wear Layer 0.3mm / Round-Beveled		
Packing	20pcs/box=2.70m ² /box		Dimension	W 162mm × L 920mm × H 68mm
Net Weight	14.0kg/box			
Performance	Wear Resistance	(EN649) Group T		
Recommended Adhesive from TOLI	dried mortar and concrete	Eco AR600		
	humid mortar and concrete	Epo Gray ST, US Cement,US Cement(less-smelly), US200, US300T		
Notes on Installation	♦For one week after installation, direct sunlight, sudden change of temperature due to air conditioning, and water washing should be avoided. ♦The color shading differs on a tile-by-tile basis. In case you do not feel comfortable about the floor after installation, please change the tiles partly so that it will look natural.			
Recommended Maintenance Wax from TOLI	New FB Wax U Wax T Wax (Non-shiny & Antibacterial)			
Others	♦Please be aware that some rubber casters might cause color-contamination. ♦Please note that the product has the indigenous odor from its materials.			

MADE IN JAPAN



PST3171



With its delicate glittering and shading, calm and comfortable spaces can be created.

▲ PST3174



PST3171



PST3172



PST3173



PST3174



▲ PST3173

ROYAL STONE (150mm×900mm plank)

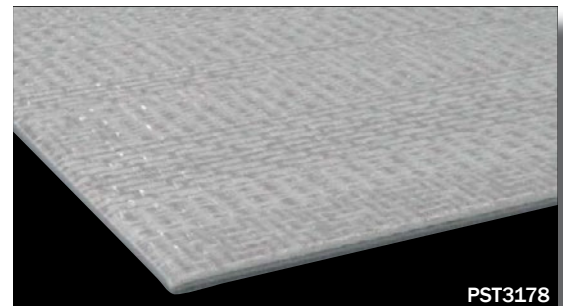
category: solid vinyl tile

ROYAL STONE is TOLI's stone-look solid vinyl tile range that has variety of sizes and authentic designs. Green product with "ECO Mark"-certified.



Specification	overall thickness	3.0mm	size	150mm×900mm
	others	Surface Clear Wear Layer 0.3mm / Round-Beveled		
Packing	20pcs/box=2.70m²/box		Dimension	W 162mm × L 920mm × H 68mm
Net Weight	14.0kg/box			
Performance	Wear Resistance	(EN649) Group T		
Recommended Adhesive from TOLI	dried mortar and concrete	Eco AR600		
	humid mortar and concrete	Epo Gray ST, US Cement,US Cement(less-smelly), US200, US300T		
Notes on Installation	♣For one week after installation, direct sunlight, sudden change of temperature due to air conditioning, and water washing should be avoided. ♣The color shading differs on a tile-by-tile basis. In case you do not feel comfortable about the floor after installation, please change the tiles partly so that it will look natural.			
Recommended Maintenance Wax from TOLI	New FB Wax U Wax T Wax (Non-shiny & Antibacterial)			
Custom Order	If you ask for a different size or wear layer, please contact TOLI sales rep.			
Others	♣Please be aware that some rubber casters might cause color-contamination. ♣Please note that the product has the indigenous odor from its materials.			

MADE IN JAPAN



PST3178



▲ PST3178/PST3179/PST3180



PST3178



PST3179



PST3180

ROYAL STONE HIGH-END (300mm square)

category: solid vinyl tile

ROYAL STONE is TOLI's stone-look solid vinyl tile range that has variety of sizes and authentic designs. Green product with "ECO Mark"-certified.



Specification	overall thickness	3.0mm	size	300mm×300mm
	others Surface Clear Wear Layer 0.3mm / Beveled / PST3024 No Beveling			
Packing	33pcs/box=2.97m²/box		Dimension	W 311mm × L 312mm × H 106mm
Net Weight	15.4kg/box			
Performance	Wear Resistance	(EN649) Group T		
Recommended Adhesive from TOLI	dried mortar and concrete	Eco AR600		
	humid mortar and concrete	Epo Gray ST, US Cement,US Cement(less-smelly), US200, US300T		
Notes on Installation	◆Before installation, make sure the arrow marks on the back of each tile, which show the direction of the pattern. ◆For one week after installation, direct sunlight, sudden change of temperature due to air conditioning, and water washing should be avoided. ◆The color shading differs on a tile-by-tile basis. In case you do not feel comfortable about the floor after installation, please change the tiles partly so that it will look natural.			
Recommended Maintenance Wax from TOLI	New FB Wax U Wax T Wax (Non-shiny & Antibacterial)			
Custom Order	If you ask for a different size or wear layer, please contact TOLI sales rep.			
Others	◆Please be aware that some rubber casters might cause color-contamination. ◆Please note that the product has the indigenous odor from its materials.			

MADE IN JAPAN



Based on intensive research on authentic texture of natural stones and wood-grains, realistic natural tones have been reproduced.

The color number marked with ◆ has a Natural Tone pattern.



PST3024
(No Beveling)



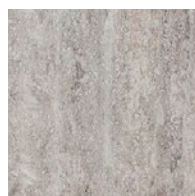
PST3028
(Beveled) ◆



PST3031
(Beveled) ◆



PST3073
(Beveled)



PST3075
(Beveled)



▲ PST3075/PST3074 (300mm×600mm · page 232)

ROYAL STONE HIGH-END (450mm square)

category: solid vinyl tile

ROYAL STONE is TOLI's stone-look solid vinyl tile range that has variety of sizes and authentic designs. Green product with "ECO Mark"-certified.



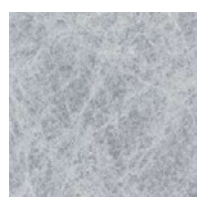
Recycle



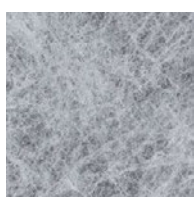
Specification	overall thickness		3.0mm	size		450mm×450mm
	others		Surface Clear Wear Layer 0.3mm / PST3017 · PST3018 No Beveling / PST3050 to PST3052 Beveled / PST3058 · PST3059 · PST3125 · PST3156 · PST3157 Two-sides Beveled			
Packing	14pcs/box = 2.83m ² /box			Dimension	W 462mm × L 473mm × H 51mm	
Net Weight	14.7kg/box					
Performance	Wear Resistance		(EN649) Group T			
Recommended Adhesive from TOLI	dried mortar and concrete		Eco AR600			
	humid mortar and concrete		Epo Gray ST, US Cement, US Cement (less-smelly), US200, US300T			
Notes on Installation	⬆Before installation, make sure the arrow marks on the back of each tile, which show the direction of the pattern. ⬆For one week after installation, direct sunlight, sudden change of temperature due to air conditioning, and water washing should be avoided. ⬆The color shading differs on a tile-by-tile basis, which will make the floor look very natural when the tiles are installed.					
Recommended Maintenance Wax from TOLI	New FB Wax, U Wax, T Wax (Non-shiny & Antibacterial)					
Others	⬆When you use 2 sides beveled tiles where you take off your shoes (e.g. in the residence), beveled parts may cause damages on your clothing and so forth. Putting on slippers or indoor shoes is recommendable. ⬆Please be aware that some rubber casters might cause color-contamination. ⬆Please note that the product has the indigenous odor from its materials. ⬆Occasionally a very slight size difference could be seen between different production lots. For designed installation of 4-sides-beveled tiles, or installation of tiles with the shape of hexagon, trapezium and 900mm square, please adjust the size of a tile as needed. Otherwise joints should be finished with caulking compound.					



Based on intensive research on authentic texture of natural stones and wood-grains, realistic natural tones have been reproduced.
The color number marked with ♦ has a Natural Tone pattern.



PST3017 ♦
(No Beveling)



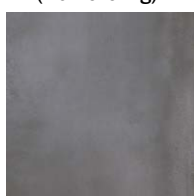
PST3018 ♦
(No Beveling)



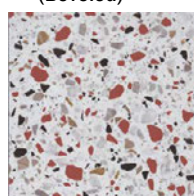
PST3050 ♦
(Beveled)



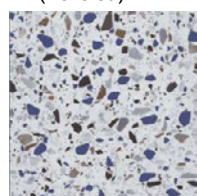
PST3051 ♦
(Beveled)



PST3052 ♦
(Beveled)



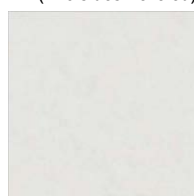
PST3058
(Two-sides Beveled)



PST3059
(Two-sides Beveled)



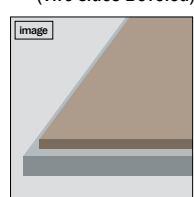
PST3125
(Two-sides Beveled)



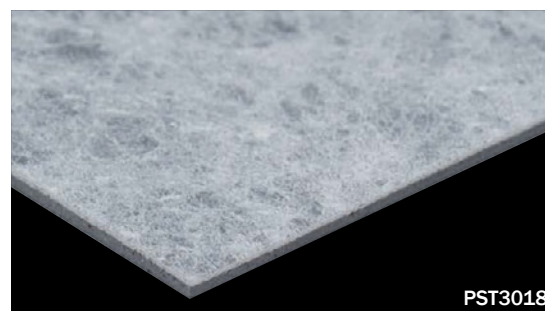
PST3156
(The same color as PST3133 with two-sides beveled)



PST3157
(Two-sides Beveled)



In PST3058 · PST3059 · PST3125 · PST3156 · PST3157, 2 sides of a tile are bordered to highlight the joints.
(Width of a border: 2.5mm)



PST3018



▲ PST3058/PST3041 (450mm×450mm · page 218)

2 colors from ROYAL STONE (450mm×450mm) can be exactly coordinated with TOLI wall covering REAL DECO.

ROYAL STONE	REAL DECO
PST3050	WRA8010
PST3051	WRA8011

ROYAL STONE HIGH-END (180mm×1260mm plank)

category: solid vinyl tile

Combination of bright silver ink and deep embossing realized a beautiful shiny surface design. Green product with “ECO Mark”-certified.

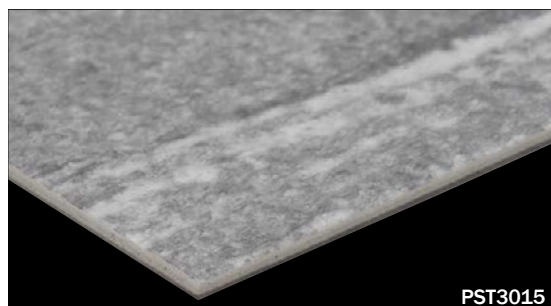


Recycle



Specification	overall thickness	3.0mm	size	180mm×1260mm
	others	Surface Clear Wear Layer 0.3mm / Round-Beveled		
Packing	12pcs/box = 2.72m ² /box		Dimension	W 193mm × L 1284mm × H 50mm
Net Weight	15.1kg/box			
Performance	Wear Resistance	(EN649) Group T		
Recommended Adhesive from TOLI	dried mortar and concrete	Eco AR600		
	humid mortar and concrete	Epo Gray ST, US Cement, US Cement (less-smelly), US200, US300T		
Notes on Installation	♦For one week after installation, direct sunlight, sudden change of temperature due to air conditioning, and water washing should be avoided. ♦The color shading differs on a tile-by-tile basis, which will make the floor look very natural when the tiles are installed.			
Recommended Maintenance Wax from TOLI	New FB Wax, U Wax, T Wax (Non-shiny & Antibacterial)			
Custom Order	If you ask for a different size or wear layer, please contact TOLI sales rep.			
Others	♦Please be aware that some rubber casters might cause color-contamination. ♦Please note that the product has the indigenous odor from its materials.			

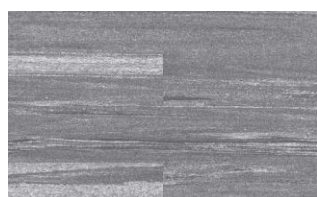
MADE IN JAPAN



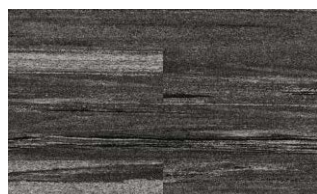
PST3015



Based on intensive research on authentic texture of natural stones and wood-grains, realistic natural tones have been reproduced.
The color number marked with ♦ has a Natural Tone pattern.



PST3015 ♦



PST3016 ♦



▲ PST3015

ROYAL STONE HIGH-END (228.6mm×1422.4mm plank)

category: solid vinyl tile

Dynamic marble pattern with big color contrast. By its long plank size, impressive images with a great impact are created on the floor.



Recycle



Specification	overall thickness		3.0mm	size	228.6mm×1422.4mm
	others		Surface Clear Wear Layer 0.3mm / Beveled		
Packing	8pcs/box = 2.60m ² /box			Dimension	W 241mm × L 1442mm × H 32mm
Net Weight	15.5kg/box				
Performance	Wear Resistance		(EN649) Group T		
Recommended Adhesive from TOLI	dried mortar and concrete		Eco AR600		
	humid mortar and concrete		Epo Gray ST, US Cement, US Cement (less-smelly), US200, US300T		
Notes on Installation	♦For one week after installation, direct sunlight, sudden change of temperature due to air conditioning, and water washing should be avoided. ♦The color shading differs on a tile-by-tile basis, which will make the floor look very natural when the tiles are installed.				
Recommended Maintenance Wax from TOLI	New FB Wax, U Wax, T Wax (Non-shiny & Antibacterial)				
Others	♦Please be aware that some rubber casters might cause color-contamination. ♦Please note that the product has the indigenous odor from its materials. ♦Occasionally a very slight size difference could be seen between different production lots. For designed installation of 4-sides-beveled tiles, or installation of tiles with the shape of hexagon, trapezium and 900mm square, please adjust the size of a tile as needed. Otherwise joints should be finished with caulking compound.				

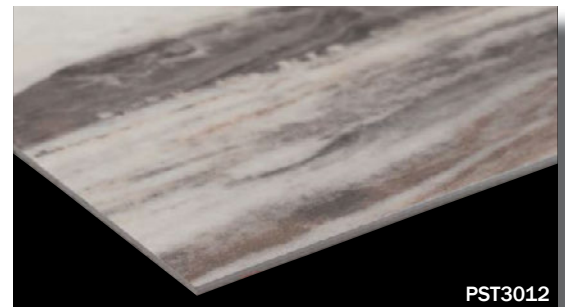


Based on intensive research on authentic texture of natural stones and wood-grains, realistic natural tones have been reproduced.

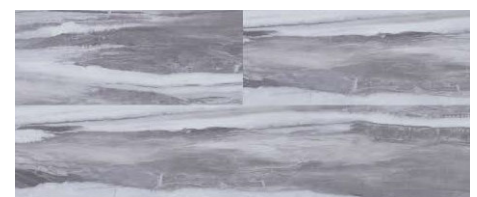
The color number marked with ♦ has a Natural Tone pattern.



▲ PST3013



PST3012



PST3011 ♦



PST3012 ♦



PST3013 ♦

ROYAL STONE

(300mm×450mm rectangular)

category: solid vinyl tile

ROYAL STONE is TOLI's stone-look solid vinyl tile range that has variety of sizes and authentic designs. Green product with "ECO Mark"-certified.



Specification	overall thickness	3.0mm	size	300mm×450mm
	others	Surface Clear Wear Layer 0.3mm / Round-Beveled		
Packing	20pcs/box=2.70m ² /box		Dimension	W 312mm × L 473mm × H 69mm
Net Weight	14.0kg/box			
Performance	Wear Resistance	(EN649) Group T		
Recommended Adhesive from TOLI	dried mortar and concrete	Eco AR600		
	humid mortar and concrete	Epo Gray ST, US Cement,US Cement(less-smelly), US200, US300T		
Notes on Installation	♦Before installation, make sure the arrow marks on the back of each tile, which show the direction of the pattern. ♦For one week after installation, direct sunlight, sudden change of temperature due to air conditioning, and water washing should be avoided. ♦The color shading differs on a tile-by-tile basis. In case you do not feel comfortable about the floor after installation, please change the tiles partly so that it will look natural.			
Recommended Maintenance Wax from TOLI	New FB Wax U Wax T Wax (Non-shiny & Antibacterial)			
Custom Order	If you ask for a different size or wear layer, please contact TOLI sales rep.			
Others	♦Please be aware that some rubber casters might cause color-contamination. ♦Please note that the product has the indigenous odor from its materials.			

MADE IN JAPAN



Based on intensive research on authentic texture of natural stones and wood-grains, realistic natural tones have been reproduced.
The color number marked with ♦ has a Natural Tone pattern.



PST3076



PST3077



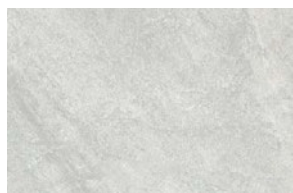
PST3080 ♦



PST3083 ♦



PST3086 ♦



PST3089 ♦



▲ PST3077

ROYAL STONE

(300mm×450mm rectangular)

category: solid vinyl tile

TOLI

Eco-friendly

Recycle

floor
score
certified

LEADER IN
LVT Global Services



▲ PST3093



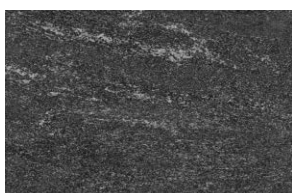
PST3092



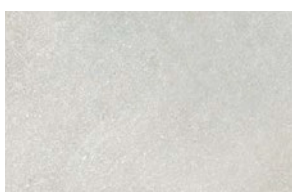
PST3093



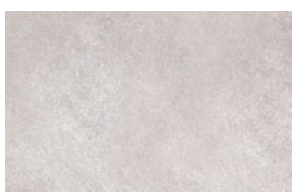
PST3094



PST3095



PST3096



PST3097



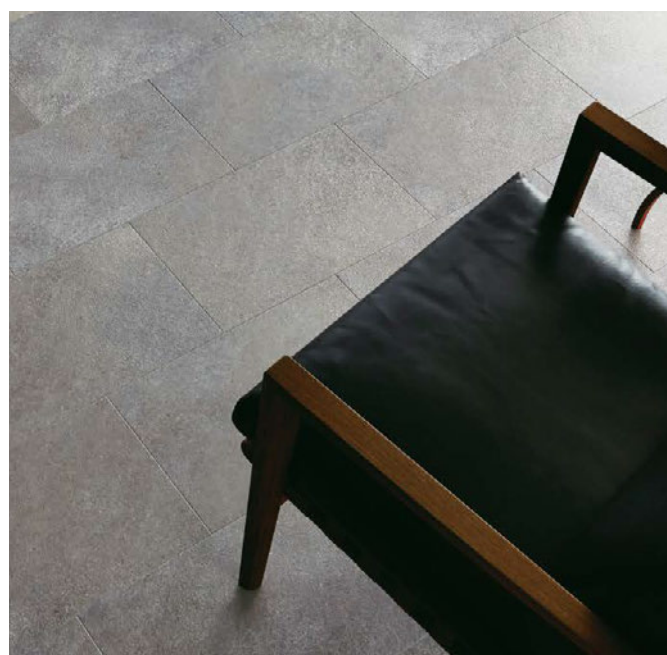
PST3098



PST3099

2 colors from ROYAL STONE (300mm×450mm rectangular) can be exactly coordinated with TOLI wall covering REAL DECO.

ROYAL STONE	REAL DECO
PST3093	WRA8027
PST3094	WRA8028



▲ PST3099

ROYAL STONE HIGH-END (300mm×600mm rectangular)

category: solid vinyl tile

ROYAL STONE is TOLI's stone-look solid vinyl tile range that has variety of sizes and authentic designs. Green product with "ECO Mark"-certified.



Recycle



Specification	overall thickness	3.0mm	size	300mm×600mm
	others	Surface Clear Wear Layer 0.3mm / Beveled		
Packing	18pcs/box=3.24m²/box		Dimension	W 315mm × L 620mm × H 61mm
Net Weight	16.8kg/box			
Performance	Wear Resistance	(EN649) Group T		
Recommended Adhesive from TOLI	dried mortar and concrete	Eco AR600		
	humid mortar and concrete	Epo Gray ST, US Cement, US Cement(less-smelly), US200, US300T		
Notes on Installation	♦Before installation, make sure the arrow marks on the back of each tile, which show the direction of the pattern. ♦For one week after installation, direct sunlight, sudden change of temperature due to air conditioning, and water washing should be avoided. ♦The color shading differs on a tile-by-tile basis. In case you do not feel comfortable about the floor after installation, please change the tiles partly so that it will look natural.			
Recommended Maintenance Wax from TOLI	New FB Wax U Wax T Wax (Non-shiny & Antibacterial)			
Custom Order	If you ask for a different size or wear layer, please contact TOLI sales rep.			
Others	♦Please be aware that some rubber casters might cause color-contamination. ♦Occasionally a very slight size difference could be seen between different production lots. For designed installation of 4-sides-beveled tiles, or installation of tiles with the shape of hexagon, trapezium and 900mm square, please adjust the size of a tile as needed. Otherwise joints should be finished with caulking compound.			

MADE IN JAPAN



PST3072



Based on intensive research on authentic texture of natural stones and wood-grains, realistic natural tones have been reproduced.

The color number marked with ♦ has a Natural Tone pattern.



PST3027 ♦



PST3030 ♦



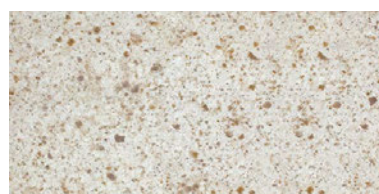
▲ PST3030/PST3029 (600mm×600mm · page 236)/PST3031 (300mm×300mm · page 226)



PST3072



PST3074



PST3126

ROYAL STONE HIGH-END (457.2mm×914.4mm rectangular)

category: solid vinyl tile

Expressive quartzite pattern has become more sophisticated with modernized colors. Its elegant flowing image will create a more natural room scene.



Specification	overall thickness	3.0mm	size	457.2mm×914.4mm
	others			



Based on intensive research on authentic texture of natural stones and wood-grains, realistic natural tones have been reproduced.
The color number marked with ♦ has a Natural Tone pattern.



PST3118



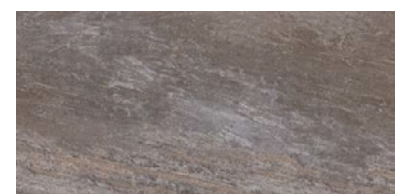
▲ PST3120



PST3118



PST3119



PST3120



ROYAL STONE GRAND

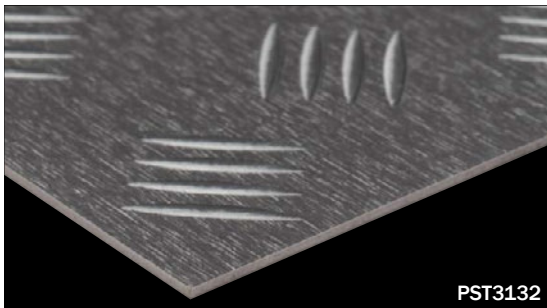
(457.2mm×914.4mm rectangular)

category: solid vinyl tile

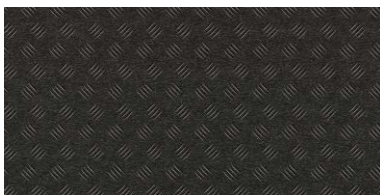
ROYAL STONE GRAND can create very amusing floor images in your projects. Metallic images in 18"×36" rectangular size are also available.



Specification	overall thickness 3.0mm		size 457.2mm×914.4mm
	others Surface Clear Wear Layer 0.3mm		
Packing	8pcs/box = 3.34m ² /box		Dimension W 470mm × L 935mm × H 30mm
Net Weight	19.8kg/box		
Recommended Adhesive from TOLI	dried mortar and concrete	Eco AR600	
	humid mortar and concrete	Epo Gray ST, US Cement, US Cement (less-smelly), US200, US300T	
Notes on Installation	♦Before installation, make sure the arrow marks on the back of each tile, which show the direction of the pattern. ♦For one week after installation, direct sunlight, sudden change of temperature due to air conditioning, and water washing should be avoided. ♦The color shading differs on a tile-by-tile basis, which will make the floor look very natural when the tiles are installed. ♦The pattern does not always match on the joint of two tiles.		
Recommended Maintenance Wax from TOLI	New FB Wax, U Wax, T Wax (Non-shiny & Antibacterial)		
Others	♦Please be aware that some rubber casters might cause color-contamination. ♦Please note that the product has the indigenous odor from its materials.		



PST3132



PST3132



▲ PST3132

ROYAL STONE GRAND (600mm square)

category: solid vinyl tile

ROYAL STONE GRAND can create very amusing floor images in your projects.



Recycle



Specification	overall thickness	3.0mm	size	600mm×600mm
	others	Surface Clear Wear Layer 0.3mm		
Packing	8pcs/box = 2.88m ² /box		Dimension	W 612mm × L 623mm × H 32mm
Net Weight	17.2kg/box			
Recommended Adhesive from TOLI	dried mortar and concrete	Eco AR600		
	humid mortar and concrete	Epo Gray ST, US Cement, US Cement (less-smelly), US200, US300T		
Notes on Installation	♦Before installation, make sure the arrow marks on the back of each tile, which show the direction of the pattern. ♦For one week after installation, direct sunlight, sudden change of temperature due to air conditioning, and water washing should be avoided. ♦The color shading differs on a tile-by-tile basis, which will make the floor look very natural when the tiles are installed.			
Recommended Maintenance Wax from TOLI	New FB Wax, U Wax, T Wax (Non-shiny & Antibacterial)			
Others	♦Please be aware that some rubber casters might cause color-contamination. ♦Please note that the product has the indigenous odor from its materials.			



Based on intensive research on authentic texture of natural stones and wood-grains, realistic natural tones have been reproduced.
The color number marked with ♦ has a **Natural Tone** pattern.



PST3122



▲ PST3121

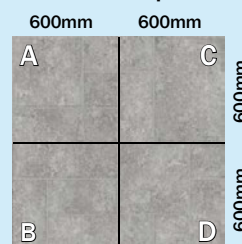


▨ PST3121



▨ PST3122

♦ For PST3121 and PST3122, the combination of 4 tiles (A/B/C/D) will create one repeat of the pattern.



● PST3122

☆ When you install PST3121 and PST3122, please lay 4 tiles (A/B/C/D) as above. The mark A/B/C/D is indicated on the back of each tile.

ROYAL STONE HIGH-END (600mm square)

category: solid vinyl tile

ROYAL STONE is TOLI's stone-look solid vinyl tile range that has variety of sizes and authentic designs. Green product with "ECO Mark"-certified.



Recycle



Specification	overall thickness	3.0mm	size	600mm×600mm
	others	Surface Clear Wear Layer 0.3mm / PST3019 to PST3021 No Beveling / PST3026 · PST3029 Beveled / PST3035 · PST3036 · PST3046 to PST3049 Round Beveled / PST3053 to PST3055 · PST3061 · PST3068 · PST3069 · PST3123 · PST3124 Two-sides Beveled		
Packing	10pcs/box = 3.60m ² /box		Dimension	W 612mm × L 623mm × H 37mm
Net Weight	18.0kg/box			
Performance	Wear Resistance	(EN649) Group T		
Recommended Adhesive from TOLI	dried mortar and concrete	Eco AR600		
	humid mortar and concrete	Epo Gray ST, US Cement, US Cement (less-smelly), US200, US300T		
Notes on Installation	◆Before installation, make sure the arrow marks on the back of each tile, which show the direction of the pattern. ◆For one week after installation, direct sunlight, sudden change of temperature due to air conditioning, and water washing should be avoided. ◆The color shading differs on a tile-by-tile basis, which will make the floor look very natural when the tiles are installed.			
Recommended Maintenance Wax from TOLI	New FB Wax, U Wax, T Wax (Non-shiny & Antibacterial)			
Custom Order	If you ask for a different size or wear layer, please contact TOLI sales rep.			
Others	◆When you use 2 sides beveled tiles where you take off your shoes (e.g. in the residence), beveled parts may cause damages on your clothing and so forth. Putting on slippers or indoor shoes is recommendable. ◆Please be aware that some rubber casters might cause color-contamination. ◆Please note that the product has the indigenous odor from its materials. ◆Occasionally a very slight size difference could be seen between different production lots. For designed installation of 4-sides-beveled tiles, or installation of tiles with the shape of hexagon, trapezium and 900mm square, please adjust the size of a tile as needed. Otherwise joints should be finished with caulking compound.			

MADE IN JAPAN

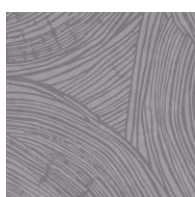


Based on intensive research on authentic texture of natural stones and wood-grains, realistic natural tones have been reproduced.

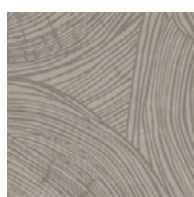
The color number marked with ◆ has a Natural Tone pattern.



PST3019
(No Beveling)



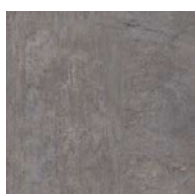
PST3020
(No Beveling)



PST3021
(No Beveling)



PST3026
(Beveled) ◆



PST3029
(Beveled) ◆



PST3035
(Round Beveled) ◆



PST3036
(Round Beveled) ◆



▲ PST3021

ROYAL STONE HIGH-END (600mm square)

category: solid vinyl tile

TOLI

Eco-friendly

Recycle

floor
score
PREPARED BY
Institute for
Sustainable
Buildings
Services



PST3046
(Round Beveled)



PST3047
(Round Beveled)



PST3048
(Round Beveled)



PST3049
(Round Beveled)



PST3053
(Two-sides Beveled)



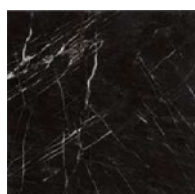
PST3054
(Two-sides Beveled)



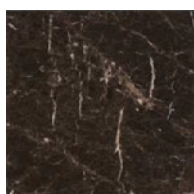
PST3055
(Two-sides Beveled)



PST3061
(Two-sides Beveled)



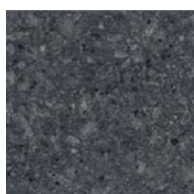
PST3068
(Two-sides Beveled)



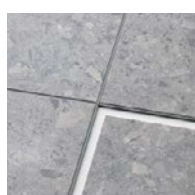
PST3069
(Two-sides Beveled)



PST3123
(Two-sides Beveled)



PST3124
(Two-sides Beveled)



In PST3053~PST3055 ·
PST3061 · PST3068 ·
PST3069 · PST3123 ·
PST3124, 2 sides of a tile
are bordered to highlight
the joints. (width of a
border: 2.5mm)



▲ PST3054



▲ PST3069

Vinyl
Tile

ROYAL STONE HIGH-END (900mm square)

category: solid vinyl tile

ROYAL STONE is TOLI's stone-look solid vinyl tile range that has variety of sizes and authentic designs. Green product with "ECO Mark"-certified.



Specification	overall thickness		3.0mm	size	900mm×900mm
	others		Surface Clear Wear Layer 0.3mm / Round-Beveled		
Packing	4pcs/box = 3.24m ² /box			Dimension	W 907mm × L 915mm × H 29mm
Net Weight	16.8kg/box				
Performance	Wear Resistance		(EN649) Group T		
Recommended Adhesive from TOLI	dried mortar and concrete		Eco AR600		
	humid mortar and concrete		Epo Gray ST, US Cement, US Cement (less-smelly), US200, US300T		
Notes on Installation	♦Before installation, make sure the arrow marks on the back of each tile, which show the direction of the pattern. ♦For one week after installation, direct sunlight, sudden change of temperature due to air conditioning, and water washing should be avoided. ♦The color shading differs on a tile-by-tile basis, which will make the floor look very natural when the tiles are installed.				
Recommended Maintenance Wax from TOLI	New FB Wax, U Wax, T Wax (Non-shiny & Antibacterial)				
Custom Order	If you ask for a different size or wear layer, please contact TOLI sales rep.				
Others	♦Please be aware that some rubber casters might cause color-contamination. ♦Please note that the product has the indigenous odor from its materials. ♦Occasionally a very slight size difference could be seen between different production lots. For designed installation of 4-sides-beveled tiles, or installation of tiles with the shape of hexagon, trapezium and 900mm square, please adjust the size of a tile as needed. Otherwise joints should be finished with caulking compound.				

MADE IN JAPAN



Based on intensive research on authentic texture of natural stones and wood-grains, realistic natural tones have been reproduced.

The color number marked with ♦ has a Natural Tone pattern.



PST3032 ♦



PST3033 ♦



PST3034 ♦

▲ PST3032

ROYAL STONE HIGH-END (900mm square)

category: solid vinyl tile



PST3060



PST3067



PST3071



▲ PST3067



▲ PST3071

ROYAL STONE HIGH-END (450mm×900mm rectangular)

category: solid vinyl tile

ROYAL STONE is TOLI's stone-look solid vinyl tile range that has variety of sizes and authentic designs. Green product with "ECO Mark"-certified.



Specification	overall thickness	3.0mm	size	450mm×900mm
	others	Surface Clear Wear Layer 0.3mm / Round-Beveled		
Packing	8pcs/box=3.24m²/box		Dimension	W 464mm × L 923mm × H 32mm
Net Weight	16.2kg/box			
Performance	Wear Resistance	(EN649) Group T		
Recommended Adhesive from TOLI	dried mortar and concrete	Eco AR600		
	humid mortar and concrete	Epo Gray ST, US Cement,US Cement(less-smelly), US200, US300T		
Notes on Installation	♦Before installation, make sure the arrow marks on the back of each tile, which show the direction of the pattern. ♦For one week after installation, direct sunlight, sudden change of temperature due to air conditioning, and water washing should be avoided. ♦The color shading differs on a tile-by-tile basis. In case you do not feel comfortable about the floor after installation, please change the tiles partly so that it will look natural.			
Recommended Maintenance Wax from TOLI	New FB Wax U Wax T Wax (Non-shiny & Antibacterial)			
Custom Order	If you ask for a different size or wear layer, please contact TOLI sales rep.			
Others	♦Please be aware that some rubber casters might cause color-contamination. ♦Please note that the product has the indigenous odor from its materials.			

MADE IN JAPAN



PST3078



Based on intensive research on authentic texture of natural stones and wood-grains, realistic natural tones have been reproduced.

The color number marked with ♦ has a Natural Tone pattern.



PST3070



PST3078



PST3081



▲ PST3070

ROYAL STONE HIGH-END (450mm×900mm rectangular)

category: solid vinyl tile

TOLI

Eco-friendly

Recycle

floor
score
FLOORING SERVICES



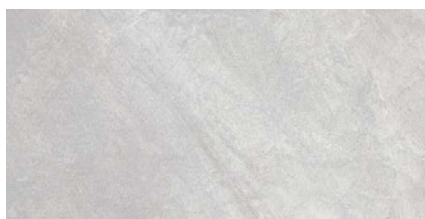
▲ PST3087/PST3088 (450mm×450mm · page 219)/PST3089 (300mm×450mm · page 230)



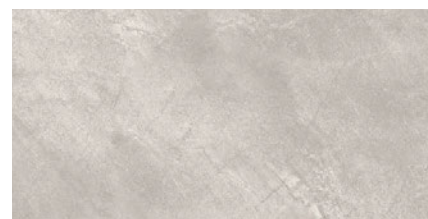
▲ PST3127



PST3084



PST3087



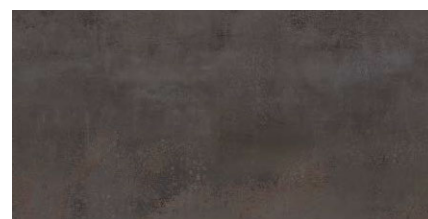
PST3090



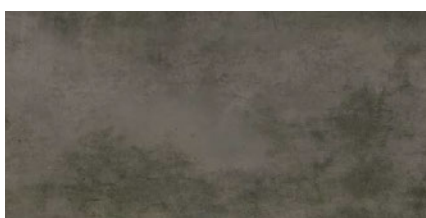
PST3127



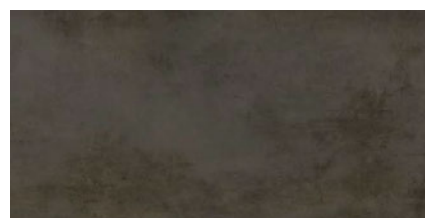
PST3128



PST3129



PST3130



PST3131

ROYAL STONE TETRA (trapezium)

category: solid vinyl tile

ROYAL STONE TETRA can create very amusing floor images in your projects. Green product with “ECO Mark”-certified.



Recycle



Specification	overall thickness	3.0mm	size	trapezium
	others	Surface Clear Wear Layer 0.3mm / Round-Beveled		
Packing	16pcs/box = 3.24m ² /box			
Net Weight	16.2kg/box			
Recommended Adhesive from TOLI	Wear Resistance	(EN649) Group T		
	dried mortar and concrete	Eco AR600		
	humid mortar and concrete	Epo Gray ST, US Cement, US Cement (less-smelly), US200, US300T		
Notes on Installation	✦For one week after installation, direct sunlight, sudden change of temperature due to air conditioning, and water washing should be avoided. ✦The color shading differs on a tile-by-tile basis, which will make the floor look very natural when the tiles are installed.			
Recommended Maintenance Wax from TOLI	New FB Wax, U Wax, T Wax (Non-shiny & Antibacterial)			
Others	✦Please be aware that some rubber casters might cause color-contamination. ✦Please note that the product has the indigenous odor from its materials. ✦Occasionally a very slight size difference could be seen between different production lots. For designed installation of 4-sides-beveled tiles, or installation of tiles with the shape of hexagon, trapezium and 900mm square, please adjust the size of a tile as needed. Otherwise joints should be finished with caulking compound. ✦Please bear in mind that ROYAL STONE (TETRA) may take more time for layout and installation compared to the tiles in square size.			

MADE IN JAPAN



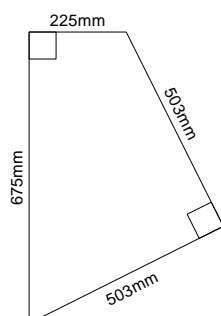
Based on intensive research on authentic texture of natural stones and wood-grains, realistic natural tones have been reproduced.
The color number marked with ♦ has a Natural Tone pattern.



PST3001 ♦



PST3002 ♦



▲ PST3001

ROYAL STONE TETRA (trapezium)

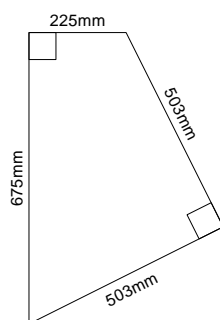
category: solid vinyl tile



PST3003



PST3004



▲ PST3004/PST3006



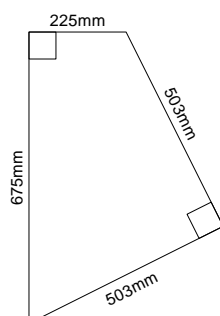
PST3005



PST3006



PST3007



▲ PST3006/PST3007

ROYAL STONE LUMINOUS TETRA (trapezium)

category: solid vinyl tile

Amazing translunary design using polarized ink, which will change the color if looked at from different angles.
Green product with "ECO Mark"-certified.



Recycle

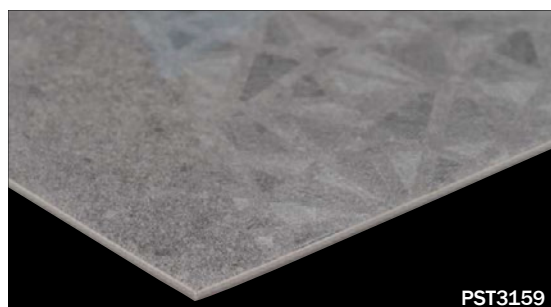


GOOD
DESIGN



Specification	overall thickness	3.0mm	size	trapezium
	others	Surface Clear Wear Layer 0.3mm / Round-Beveled		
Packing	16pcs/box = 3.24m ² /box			
Net Weight	16.2kg/box			
Recommended Adhesive from TOLI	Wear Resistance	(EN649) Group T		
	dried mortar and concrete	Eco AR600		
	humid mortar and concrete	Epo Gray ST, US Cement, US Cement (less-smelly), US200, US300T		
Notes on Installation	✦For one week after installation, direct sunlight, sudden change of temperature due to air conditioning, and water washing should be avoided. ✦The color shading differs on a tile-by-tile basis, which will make the floor look very natural when the tiles are installed.			
Recommended Maintenance Wax from TOLI	New FB Wax, U Wax, T Wax (Non-shiny & Antibacterial)			
Others	✦Please be aware that some rubber casters might cause color-contamination. ✦Please note that the product has the indigenous odor from its materials. ✦Occasionally a very slight size difference could be seen between different production lots. For designed installation of 4-sides-beveled tiles, or installation of tiles with the shape of hexagon, trapezium and 900mm square, please adjust the size of a tile as needed. Otherwise joints should be finished with caulking compound. ✦Please bear in mind that ROYAL STONE (LUMINOUS TETRA) may take more time for layout and installation compared to the tiles in square size.			

MADE IN JAPAN



Based on intensive research on authentic texture of natural stones and wood-grains, realistic natural tones have been reproduced.

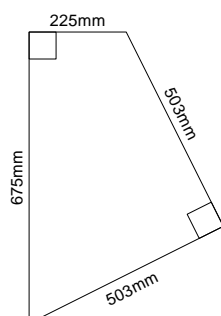
The color number marked with ♦ has a Natural Tone pattern.



PST3158 ♦



PST3159 ♦



▲ PST3158

ROYAL STONE MIRAGE

(150mm×900mm plank)

category: solid vinyl tile

Within one same color, 2 different materials - concrete and metal - are well designed. Part of its metallic pattern is using polarized ink.



Specification	overall thickness	3.0mm	size	150mm×900mm
	others	Surface Clear Wear Layer 0.3mm / Round-Beveled		
Packing	20pcs/box=2.70m²/box		Dimension	W 162mm × L 920mm × H 68mm
Net Weight	14.0kg/box			
Performance	Wear Resistance	(EN649) Group T		
Recommended Adhesive from TOLI	dried mortar and concrete	Eco AR600		
	humid mortar and concrete	Epo Gray ST, US Cement,US Cement(less-smelly), US200, US300T		
Notes on Installation	⬆For one week after installation, direct sunlight, sudden change of temperature due to air conditioning, and water washing should be avoided. ⬆The color shading differs on a tile-by-tile basis. In case you do not feel comfortable about the floor after installation, please change the tiles partly so that it will look natural.			
Recommended Maintenance Wax from TOLI	New FB Wax U Wax T Wax (Non-shiny & Antibacterial)			
Custom Order	If you ask for a different size or wear layer, please contact TOLI sales rep.			
Others	⬆Please be aware that some rubber casters might cause color-contamination. ⬆Please note that the product has the indigenous odor from its materials.			

MADE IN JAPAN



Based on intensive research on authentic texture of natural stones and wood-grains, realistic natural tones have been reproduced.
The color number marked with ♦ has a Natural Tone pattern.



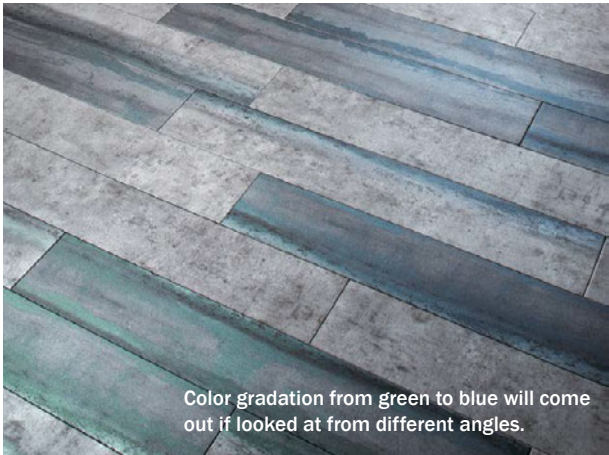
▲ PST3014



PST3014



PST3014 ♦



Color gradation from green to blue will come out if looked at from different angles.

ROYAL STONE HIGH-END (179mm hexagon)

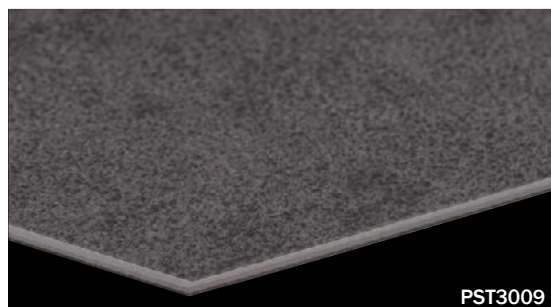
category: solid vinyl tile

ROYAL STONE in hexagon size is a next-generation vinyl tile which will spark a revolution with its one-of-a-kind shape. Green product with "ECO Mark"-certified.



Specification	overall thickness	3.0mm	size	179mm hexagon
	others	Surface Clear Wear Layer 0.3mm / Beveled		
Packing	36pcs/box = 2.99m²/box		Dimension	W 372mm × L 643mm × H 68mm
Net Weight	16.8kg/box			
Recommended Adhesive from TOLI	Wear Resistance	(EN649) Group T		
	dried mortar and concrete	Eco AR600		
	humid mortar and concrete	Epo Gray ST, US Cement, US Cement (less-smelly), US200, US300T		
Notes on Installation	♦Before installation, make sure the arrow marks on the back of each tile, which show the direction of the pattern. ♦For one week after installation, direct sunlight, sudden change of temperature due to air conditioning, and water washing should be avoided. ♦The color shading differs on a tile-by-tile basis, which will make the floor look very natural when the tiles are installed.			
Recommended Maintenance Wax from TOLI	New FB Wax, U Wax, T Wax (Non-shiny & Antibacterial)			
Others	♦Please be aware that some rubber casters might cause color-contamination. ♦Please bear in mind that ROYAL STONE (hexagon) may take more time for layout and installation compared to the tiles in square size. ♦Please note that the product has the indigenous odor from its materials. ♦Occasionally a very slight size difference could be seen between different production lots. For designed installation of 4-sides-beveled tiles, or installation of tiles with the shape of hexagon, trapezium and 900mm square, please adjust the size of a tile as needed. Otherwise joints should be finished with caulking compound.			

MADE IN JAPAN



PST3009



PST3008

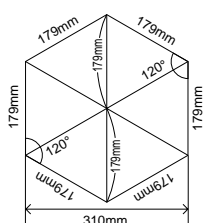


PST3009



PST3010

<Dimension Details>



▲ PST3008/PST3009/PST3010/PWT3202 (ROYAL WOOD - page 265)

ROYAL STONE NONS (450mm square)

category: solid vinyl tile

LVT with excellent non-slippery performance.
Green product with “ECO Mark”-certified.

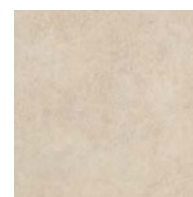


Specification	overall thickness		3.0mm	size	450mm×450mm
	others		Surface Clear Wear Layer 0.3mm		
Packing	14pcs/box = 2.83m ² /box			Dimension	W 462mm × L 473mm × H 51mm
Net Weight	15.0kg/box				
Recommended Adhesive from TOLI	Wear Resistance		(EN649) Group T		
	dried mortar and concrete		Eco AR600		
	humid mortar and concrete		Epo Gray ST, US Cement, US Cement (less-smelly), US200, US300T		
Notes on Installation	♦Before installation, make sure the arrow marks on the back of each tile, which show the direction of the pattern. ♦For one week after installation, direct sunlight, sudden change of temperature due to air conditioning, and water washing should be avoided. ♦The color shading differs on a tile-by-tile basis, which will make the floor look very natural when the tiles are installed.				
Recommended Maintenance Wax from TOLI	New FB Wax, U Wax, T Wax (Non-shiny & Antibacterial)				
Others	♦Please be aware that some rubber casters might cause color-contamination. ♦Please note that the product has the indigenous odor from its materials. ♦For the dirt and stains stuck on the surface, apply the neutral detergent and remove them by the brush with thin bristles. Afterwards clean with a vacuum cleaner, a wet rag wrung out tightly, or a mop. ♦Before applying the wax for maintenance, buff the floor surface sufficiently with a blue pad. Please bear in mind that thick coating of wax will lessen non-slippery performance. If the slip-retardant effect to oil should be required, do not apply the wax on the surface. ♦ROYAL STONE NONS is for the place where you walk with your shoes on. Do not walk on it without your shoes on. ♦The gloss levels on the 4 sides are not always even. ♦Due to non-slippery finish of a tile, the surface of the furniture and fixtures facing the floor may be abraded faster. That depends on their materials. ♦In the environment where oils always adhere to shoe soles, non-slip finish on the surface cannot perform well.				

MADE IN JAPAN

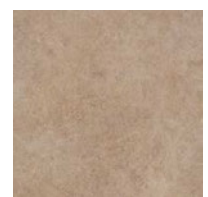


PST3181



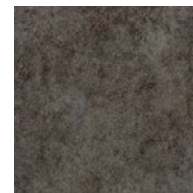
PST3181

(Non-Slippery Finish of PST3135)



PST3182

(Non-Slippery Finish of PST3136)



PST3183

※Non-slippery surface coating will cause bigger color difference compared to the difference between production batches.

Slip Resistance

<in accordance with JIS A 1454 (OY-PULL method), rubber shoes>

	C.S.R. value	
	dry	wet and dusty
ROYAL STONE NONS	0.66	0.46

We call “slip-resistant” for the products that can show sufficient non-slippery performance both in dry condition and in wet and dusty condition.

▲ PST3181/PST3182/PST3183