

NONWAXLEUM NW

category: low-maintenance vinyl sheet

Vinyl sheet product for heavy traffic use with the highest durability.



Specification	overall thickness	2.0mm	width×length	1820mm×20m
	others	Antibacterial & Antivirus Finished / Highly Durable UV-Coated Surface		
JIS Registered No.	No. GB0507188 (JIS A 5705 Vinyl Sheet Flooring)			
Packing	20m/roll			
Net Weight	TS7000	106.0kg/roll	TS5000	102.0kg/roll
Performance	Wear Resistance	(EN649) Group T		
Recommended Applications	hospitals / public facilities			
Recommended Adhesive from TOLI	dried mortar and concrete	Eco Royal Cement, Eco AR600		
	heavy traffic use	Epo Gray S		
	The wards and living rooms where beds with double-row casters are used	Epo Gray ST, US Cement, US Cement (less-smelly), US200		
	humid mortar and concrete	Epo Gray ST, US Cement, US Cement (less-smelly), US200		
	TOLI UNDERLAY SHEET	US Cement, US Cement (less-smelly), US200		
Welding/Seam Finish	◆Welding rod for heat-welding (antibacterial finished) is available on a color-by-color basis. ◆Seam sealer like TOLI Super Seam Liquid can work as well. ◆JOINT SHIELD method (JS Method) by TOLI JOINT SHIELD is also applicable.			
Notes on Installation	◆Seams should be heat-welded or finished with a seam sealing bond. TOLI JOINT SHIELD can also work. ◆TOLI JOINT SHIELD can also work on the top of TOLI UNDERLAY SHEET, but when partial weight will be put on the floor (such as heavy stuff or casters), the seam joints should not be finished with TOLI JOINT SHIELD. ◆When you install 2 different sheets, each edge should be jointed at the seam. (Do not cut in the middle of the sheet.) ◆Please do not use the urethane adhesive other than US Cement, US Cement (less-smelly), US200. ◆For one week after installation, direct sunlight, sudden change of temperature due to air conditioning, and water washing should be avoided. ◆As the sub-floor material, the underlayment TOLI UNDERLAY SHEET (page 297) is also workable. Apply the same adhesive for both upside and downside of the underlayment. Please note that the durability to dynamic load will be degraded when you install with the underlayment. ◆When you install NONWAXLEUM NW in the places where rollaway beds are used (e.g. a patient room of the hospital, a living room of the welfare facility and so forth), the epoxy adhesive such as TOLI Epo Gray ST and urethane adhesive such as US Cement, US Cement (less-smelly), US200 should be used even if the humidity of the sub-floor is less than 8%.			
Recommended Way of Maintenance from TOLI	◆No need to apply the maintenance wax on the surface. Clean the floor every day with an auto scrubber or a wet rag wrung out tightly. Use the neutral detergent for fixed contamination. ◆Even if the wax is applied on the surface, it does not affect the quality of NW series. ◆For a large facility, an abstergent auto scrubber is more recommendable. ◆High speed buffing should be avoided. Otherwise highly durable UV coating will be abraded.			
Others	◆At the entrance of the building, the dust control mat should be laid in order to avoid soils and sands from outside. ◆To prepare the floor which is durable to rolling loads, please fully check the combination of the floor covering, the sub-floor, the adhesive, and the loads. For instance, when the sub-floor is too weak, the floor covering might be destroyed from underneath. ◆Please be aware that some rubber casters might cause color-contamination. ◆Please note that the product has the indigenous odor from its materials.			

MADE IN JAPAN



TS7001



TS7001



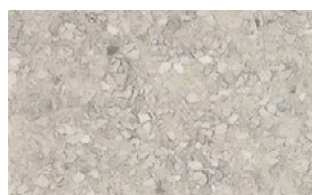
TS7005



TS7009



TS7006



TS7013



TS7014



TS7016



TS7021



TS7012



TS7024

◆ **Antibacterial Performance** <in accordance with JIS Z 2801>
In JIS testing criteria, when the value is more than 2.0, the product has sufficient antibacterial property.

	Escherichia Coli	Staphylococcus Aureus	MRSA
NONWAXLEUM NW	More than 2.0	More than 2.0	More than 2.0

Conducted by BOKEN Quality Evaluation Institute

◆ **Durability to Rolling Loads** <in accordance with JIS A 1454: Caster Rilling Test>

NONWAXLEUM NW		
Time until the floor covering swells	More than 180 minutes (1st stage test by wheels with 110mm Φ)	More than 30 minutes (2nd stage test by wheels with 46mm Φ)

1st stage test: JIS A 1454: Caster Rilling Test (load per unit area: approx. 900N/cm²)
2nd stage test: Independent test by TOLI (load per unit area: approx. 2,700N/cm²)

NONWAXLEUM NW

category: low-maintenance vinyl sheet



▲ TS7013/TS5215



▲ TS7014/TS7021

● NO NEED TO APPLY THE MAINTENANCE WAX

NONWAXLEUM NW has an excellent abrasion resistance with its highly-durable antibacterial UV-coated layer and also its antibacterial special-reinforced vinyl clear wear layer. Dirt and stains are not likely to stick, and even if they do, you can easily remove them. The floor can be maintained with least time and efforts.

◆ Scuff Mark Testing

product	NONWAXLEUM NW	2.0mm vinyl sheet
before cleaning		
after cleaning		

※ For the details of maintenance without applying the wax, please contact TOLI sales rep.

● DURABLE TO RUNNING OF CASTERS AND WHEEL CHAIRS

NONWAXLEUM NW has excellent durability to rolling loads like casters and carts. It's recommendable for various projects such as healthcare and welfare facilities where you can expect heavy traffic by rollaway beds and wheel chairs, and also education and commercial facilities where carts come and go frequently.

◆ Caster Rolling Test (adhesive: TOLI Epo Gray S)

NONWAXLEUM NW	2.0mm vinyl sheet
1st stage test Not swelled after 180 minutes	1st stage test Swelled after 60 minutes

※ When you need the durability to rolling loads, please install with TOLI Epo Gray S.

● EXCELLENT ABRASION RESISTANCE

Due to its strong surface structure, NONWAXLEUM NW is hard to be abraded and you can walk with shoes on it for a long period. It has excellent durability with its "highly durable UV coating" and "highly durable and stain-resistant clear wear layer." Suitable for heavy traffic areas such as the entrances of commercial facilities and the corridors of public facilities.

◆ Abrasion Resistance Testing

※ appearance after 4,000 rounds

2.0 mm vinyl sheet	
※ appearance after 10,000 rounds	
NONWAXLEUM NW	

NONWAXLEUM NW

category: low-maintenance vinyl sheet

No need to apply the wax. Just by easy cleaning, beautiful appearance can be maintained for long. NONWAXLEUM NW is a highly-durable vinyl sheet with variety of designs.

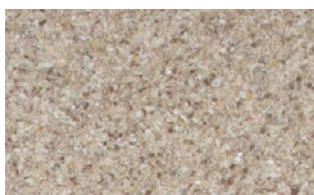


Specification	overall thickness	2.0mm	width×length	1820mm×20m
	others	Antibacterial & Antivirus Finished / Highly Durable UV-Coated Surface		
JIS Registered No.	No. GB0507188 (JIS A 5705 Vinyl Sheet Flooring)			
Packing	20m/roll			
Net Weight	TS7000	106.0kg/roll	TS5000	102.0kg/roll
Performance	Wear Resistance	(EN649) Group T		
Recommended Applications	hospitals / public facilities			
Recommended Adhesive from TOLI	See page 302.			
Welding/Seam Finish	See page 302.			
Notes on Installation	See page 302.			
Recommended Way of Maintenance from TOLI	See page 302.			
Others	See page 302.			

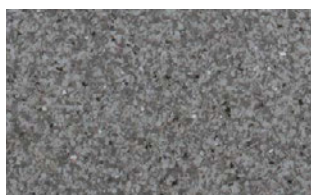
MADE IN JAPAN



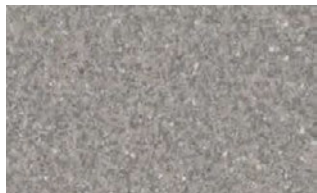
TS7101



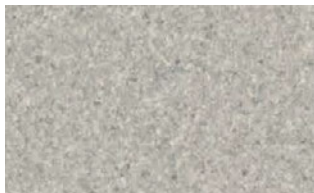
TS7103



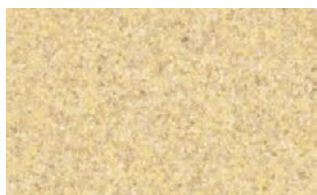
TS7105



TS7108



TS7109



TS7110



TS7111



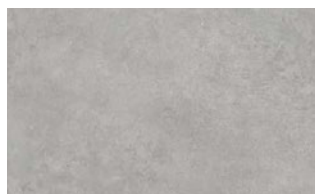
TS7112



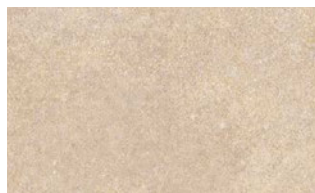
▲ TS5242/ TS7109

NONWAXLEUM NW

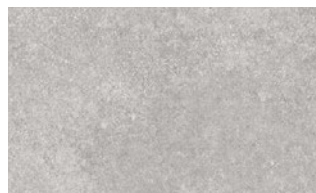
category: low-maintenance vinyl sheet



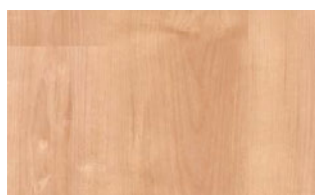
TS5111



TS5105



TS5106



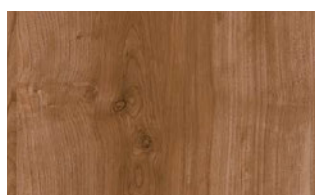
TS5221

MAPLE



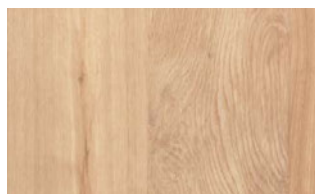
TS5222

MAPLE



TS5215

CHERRY



TS5231

OAK



TS5232

OAK



TS5241

ELM



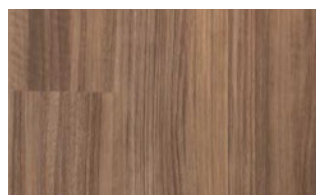
TS5242

ELM



TS5210

WALNUT



TS5211

WALNUT



▲ TS5111/TS5232



▲ TS5241/TS7112

Vinyl Sheet