

NS REALDESIGN NW

category: low-maintenance slip-resistant
vinyl sheet

Excellent designs which can perform well in both indoor and outdoor applications.
Design-oriented non-slip vinyl sheet product which shows great performance in
slip-resistance, weather-resistance, and easy maintenance.



Long Life



Weight Saving
Easy Maintenance



Specification	overall thickness		2.5mm (salient)	width×length	1820mm×20m
	others		Highly Durable UV-Coated Surface		
JIS Registered No.	No.GB0507188 (JIS A 5705 Vinyl Sheet Flooring)				
Packing	20m/roll				
Net Weight	73.8kg/roll				
Recommended Applications	entrances/porches/corridors/balconies in the apartment The areas where non-slip function is required in the restaurant or other facilities.				
Recommended Adhesive from TOLI	dried mortar and concrete	Eco Royal Cement, Eco AR600			
	heavy traffic use	Epo Gray S, US Cement			
	humid mortar and concrete	Epo Gray ST, US Cement, US Cement (less-smelly), US200			
	waterproof sub-floor with urethane coated	Epo Gray ST, US Cement, US Cement (less-smelly), US200			
	TOLI UNDERLAY SHEET	(indoor use)	US Cement, US Cement (less-smelly), US200		
	TOLI NS UNDERLAY SHEET	(indoor use)	US Cement		
Welding	Welding rod for heat-welding is available on a color-by-color basis. Edges should be finished with sealing materials such as TOLI NS Seal/TOLI NS Seal II. The color of a welding rod is similar to the base part of the vinyl sheet. Please bear it in mind when you plan a floor layout.				
Notes on Installation	◆For heat welding, please avoid cutting the sheet along the embossing of ceramic-joints pattern. Otherwise the color of a welding rod will stand out. ◆For one week after installation, direct sunlight, sudden change of temperature due to air conditioning, and water washing should be avoided. ◆Where you can expect the floor will get wet, NS REALDESIGN NW should be installed in accordance with the method for humid mortar and concrete. Heat-weld the joints, and also finish the edges with the sealer such as TOLI NS Seal/TOLI NS Seal II. ◆The underlayment TOLI UNDERLAY SHEET (page 297) and TOLI NS UNDERLAY SHEET (page 363) are workable. Apply the same adhesive for both upside and downside of the underlayment. ◆For roof balconies, the sub-floor is frequently prepared by "the waterproof layer with concrete". In terms of structure, this type of sub-floor may absorb a lot of water. Installation of a vinyl sheet on it cannot be recommended because that will cause swollenness and peeling off of the sheet product.				
Recommended Maintenance Wax from TOLI	◆For outdoor use, do not apply the wax on the surface. ◆No need to apply the maintenance wax on the surface. Clean the floor every day with an auto scrubber or a wet rag wrung out tightly. Use the neutral detergent for fixed contamination. ◆Even if the wax is applied on the surface, it does not affect the quality of NW series. ◆New FB Wax, U Wax, and T Wax (Non-shiny and Antibacterial) are recommendable. Please apply the wax uniformly and thinly so that it will not be pooled in dented parts of surface embossing.				
Others	◆Please bear in mind that surface embossing cannot always match on the joints. ◆When you install NS Sheet for outdoor or semi-outdoor use, it might not fully perform without prescribed inclination. ◆When you finish the edge with TOLI NS Seal at the a temperature in summer, the bubble might be caused on the joints. You can avoid that by decreasing Liquid B of NS Seal by 50 to 75%. In that case please do not walk on the floor for 24hours after installation because it will take time to be hardened. ◆Please be aware that some rubber casters might cause color-contamination. ◆Please note that the product has the indigenous odor from its materials.				

MADE IN JAPAN



NS4221



NS4201

◆ Slip Resistance

<in accordance with JIS A 1454 (OY-PULL method), rubber shoes>

	C.S.R. value	
	dry	wet and dusty
NS REALDESIGN NW (NS4200)	0.78	0.51
NS REALDESIGN NW (NS4300)	0.82	0.54



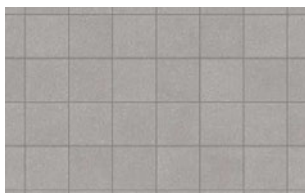
▲ NS4201

NS REALDESIGN NW

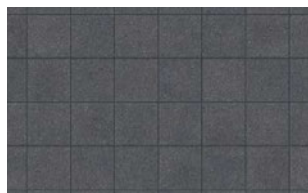
category: low-maintenance slip-resistant
vinyl sheet



NS4221



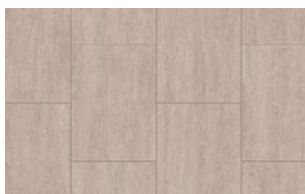
NS4222



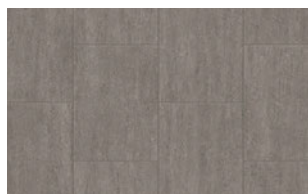
NS4223



▲ NS4221/NS4223



NS4211



NS4212



NS4213



NS4214



▲ NS4211

Specialty
Flooring

NS REALDESIGN NW

category: low-maintenance slip-resistant
vinyl sheet

Excellent designs which can perform well in both indoor and outdoor applications.
Design-oriented non-slip vinyl sheet product which shows great performance in
slip-resistance, weather-resistance, and easy maintenance.



Long Life



Weight Saving
Easy Maintenance



Specification	overall thickness	2.5mm (salient)	width×length	1820mm×20m
	others	Highly Durable UV-Coated Surface		
JIS Registered No.	No.GB0507188 (JIS A 5705 Vinyl Sheet Flooring)			
Packing	20m/roll			
Net Weight	73.8kg/roll			
Recommended Applications	entrances/porches/corridors/balconies in the apartment The areas where non-slip function is required in the restaurant or other facilities.			
Recommended Adhesive from TOLI	See page 350.			
Welding	See page 350.			
Notes on Installation	See page 350.			
Recommended Maintenance Wax from TOLI	See page 350.			
Others	See page 350.			

MADE IN JAPAN



NS4231



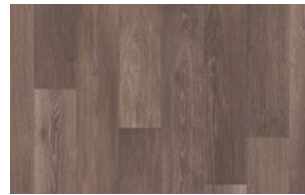
NS4301

OAK



NS4302

OAK

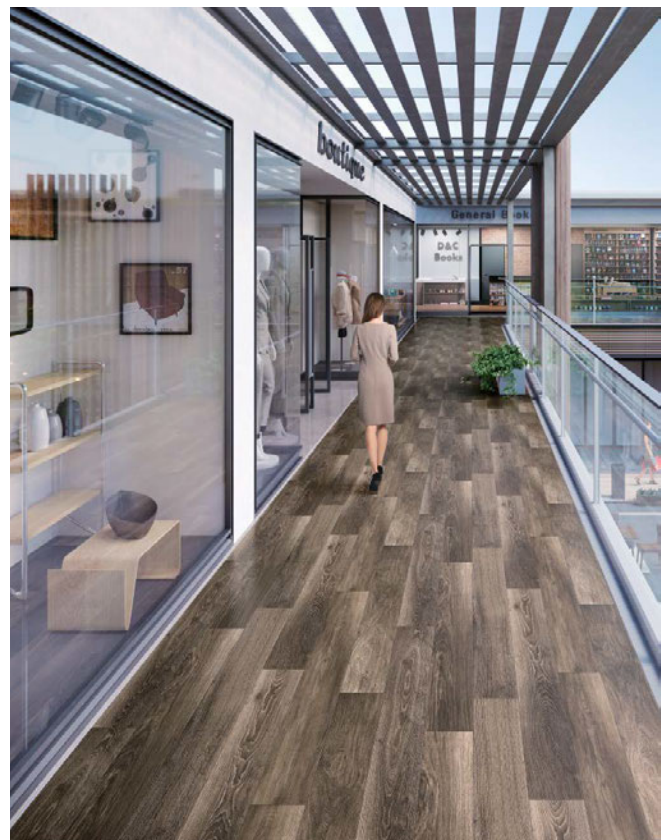


NS4303

OAK



▲ NS4231



▲ NS4303