

NS800

category: slip-resistant vinyl sheet

Standard slip-resistant vinyl sheet which can also work for outdoor use. A wide variety of designs are available including unique new patterns.



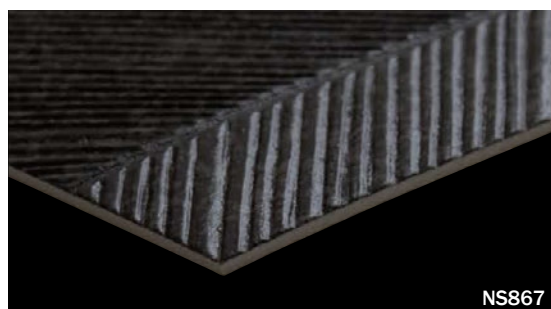
**GOOD
DESIGN**

NS866
NS867



Specification	overall thickness	2.5mm (salient)	width×length	1820mm×20m / 1620mm×20m / 1320mm×20m
JIS Registered No.	No. GB0506143 (JIS A 5705 Vinyl Sheet Flooring)			
Packing	20m/roll			
Net Weight	110.3kg (1820mm) / 98.2kg (1620mm) / 80.0kg (1320mm)			
Recommended Applications	corridors or balconies in the apartment			
Recommended Adhesive from TOLI	dried mortar and concrete	Eco Royal Cement, Eco AR600		
	humid mortar and concrete	Epo Gray ST, US Cement, US Cement (less-smelly), US200, US300S		
	waterproof sub-floor with urethane coated	Epo Gray ST, US Cement, US Cement (less-smelly), US200, US300S		
	TOLI UNDERLAY SHEET	(indoor use)	US Cement, US Cement (less-smelly), US200, US300S	
	TOLI NS UNDERLAY SHEET	US Cement		
Welding	Welding rod for heat-welding is available on a color-by-color basis. Edges should be finished with sealing materials such as TOLI NS Seal/TOLI NS Seal II			
Notes on Installation	◆For one week after installation, direct sunlight, sudden change of temperature due to air conditioning, and water washing should be avoided. ◆Where you can expect the floor will get wet, NS800 should be installed in accordance with the method for humid mortar and concrete. Heat-weld the joints, and also finish the edges with the sealer such as TOLI NS Seal/TOLI NS Seal II. ◆TOLI UNDERLAY SHEET (page 297) and TOLI NS UNDERLAY SHEET (page 363) are also workable. Please use the same adhesive for both top and bottom of UNDERLAY SHEET. ◆For roof balconies, the sub-floor is frequently prepared by “the waterproof layer with concrete”. In terms of structure, this type of sub-floor may absorb a lot of water. Installation of a vinyl sheet on it cannot be recommended because that will cause swollenness and peeling off of the sheet product.			
Recommended Maintenance Wax from TOLI	◆For outdoor use, do not apply the wax on the surface. ◆New FB Wax, U Wax, and T Wax (Non-shiny and Antibacterial) are recommendable. Please apply the wax uniformly and thinly so that it will not be pooled in dented parts of surface embossing.			
Others	◆Please bear in mind that surface embossing cannot always match on the joints. ◆When you finish the edge with TOLI NS Seal at the a temperature in summer, the bubble might be caused on the joints. You can avoid that by decreasing Liquid B of NS Seal by 50 to 75%. In that case please do not walk on the floor for 24hours after installation because it will take time to be hardened. ◆Please be aware that some rubber casters might cause color-contamination. ◆Please note that the product has the indigenous odor from its materials. ◆If you install 3 different widths (1820mm/1620mm/1320mm) of the same color together in the same area, the colors might not exactly match. This is because they cannot be in the same production dye lot.			

MADE IN JAPAN

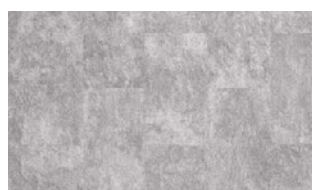


NS867

◆Slip Resistance

<in accordance with JIS A 1454 (OY-PULL method), rubber shoes>

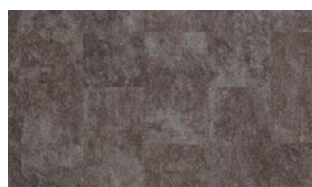
	C.S.R. value	
	dry	wet and dusty
NS811 to NS816	0.72	0.61
NS822 to 824	0.70	0.51
NS830 to 832	0.75	0.51
NS857 to 859	0.70	0.51
NS866, 867	0.70	0.53
NS8401 to NS8403	0.82	0.57
NS8441 to NS8444	0.85	0.63
NS8471, 8472	0.86	0.59
NS8901, 8902	0.86	0.61
NS8911 to NS8913	0.84	0.56
NS8921 to NS8923	0.81	0.53



NS830 (1820mm)
NS130830 (1320mm)



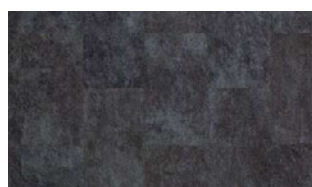
NS857 (1820mm)
NS130857 (1320mm)



NS831 (1820mm)
NS130831 (1320mm)



NS858 (1820mm)
NS130858 (1320mm)



NS832 (1820mm)
NS130832 (1320mm)



NS859 (1820mm)
NS130859 (1320mm)

NS800

category: slip-resistant vinyl sheet



**GOOD
DESIGN**



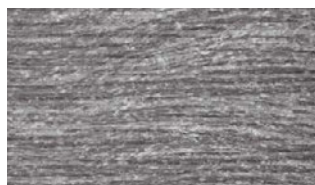
NS866
NS867



NS8471 (1820mm)
NS1308471 (1320mm)



NS8472 (1820mm)
NS1308472 (1320mm)



NS822 (1820mm)
NS130822 (1320mm)



NS823 (1820mm)
NS130823 (1320mm)



NS824 (1820mm)
NS130824 (1320mm)



NS8401 (1820mm)
NS1308401 (1320mm)



NS8402 (1820mm)
NS1308402 (1320mm)



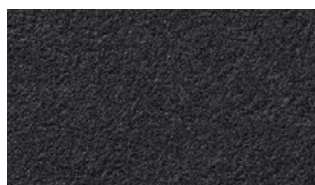
NS8403 (1820mm)
NS1308403 (1320mm)



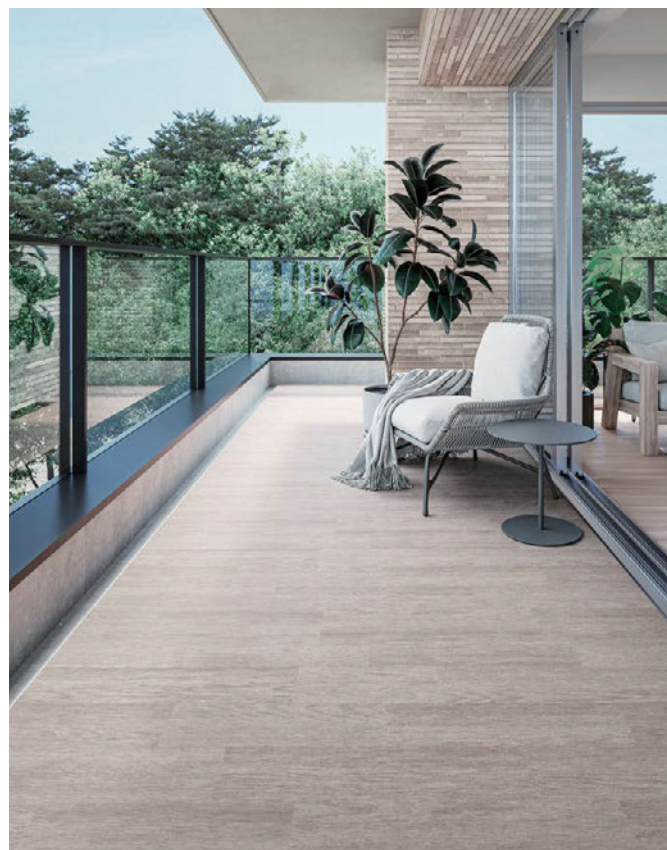
NS8921 (1820mm)
NS1308921 (1320mm)



NS8922 (1820mm)
NS1308922 (1320mm)



NS8923 (1820mm)
NS1308923 (1320mm)



▲ NS8401



▲ NS8921/NS8923

Specialty
Flooring

NS800

category: slip-resistant vinyl sheet

Standard slip-resistant vinyl sheet which can also work for outdoor use. A wide variety of designs are available including unique new patterns.



**GOOD
DESIGN**



Specification	overall thickness	2.5mm (salient)	width×length	1820mm×20m / 1620mm×20m / 1320mm×20m
JIS Registered No.	No. GB0506143 (JIS A 5705 Vinyl Sheet Flooring)			
Packing	20m/roll			
Net Weight	110.3kg (1820mm) / 98.2kg (1620mm) / 80.0kg (1320mm)			
Recommended Applications	corridors or balconies in the apartment			
Recommended Adhesive from TOLI	See page 346.			
Welding	See page 346.			
Notes on Installation	See page 346.			
Recommended Maintenance Wax from TOLI	See page 346.			
Others	See page 346.			

MADE IN JAPAN



NS8911 (1820mm)
NS1308911 (1320mm)



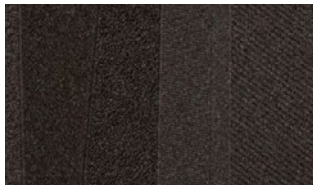
NS8912 (1820mm)
NS1308912 (1320mm)



NS8901 (1820mm)
NS1308901 (1620mm)



NS8902 (1820mm)
NS1308902 (1620mm)



NS8913 (1820mm)
NS1308913 (1320mm)



▲ NS8913



▲ NS8902/NS8901

NS800

category: slip-resistant vinyl sheet

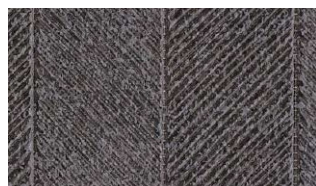


GOOD
DESIGN

NS866
NS867



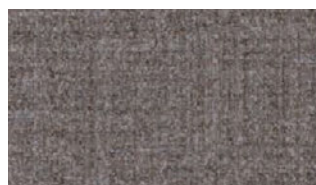
NS866 (1820mm)
NS130866 (1320mm)



NS867 (1820mm)
NS130867 (1320mm)



NS8441 (1820mm)
NS1608441 (1620mm)
NS1308441 (1320mm)



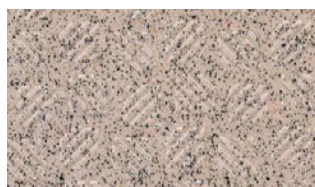
NS8442 (1820mm)
NS1608442 (1620mm)
NS1308442 (1320mm)



NS8443 (1820mm)
NS1608443 (1620mm)
NS1308443 (1320mm)



NS8444 (1820mm)
NS1608444 (1620mm)
NS1308444 (1320mm)



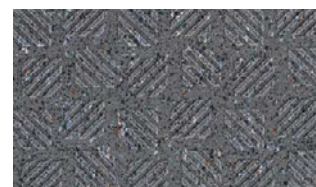
NS815 (1820mm)
NS160815 (1620mm)
NS130815 (1320mm)



NS813 (1820mm)
NS160813 (1620mm)
NS130813 (1320mm)



NS816 (1820mm)
NS160816 (1620mm)
NS130816 (1320mm)



NS811 (1820mm)
NS160811 (1620mm)
NS130811 (1320mm)

Specialty
Flooring



▲ NS867



▲ NS8444/NS8441