

NS550 GARDENT

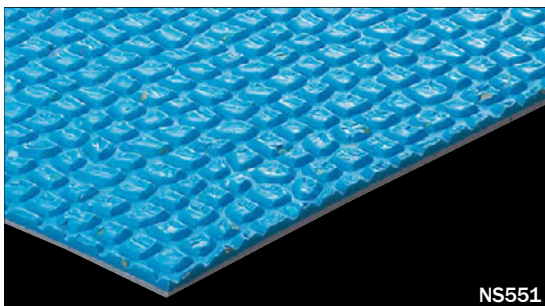
category: slip-resistant and heat-insulating vinyl sheet

NS550 GARDENT is a non-slip vinyl sheet for the poolside, which has excellent weather-resistance and high durability. Pretty vivid 10 colors are available.



Specification	overall thickness	2.5mm (salient)	width×length	1820mm×20m
JIS Registered No.	No. GB0506143 (JIS A 5705 Vinyl Sheet Flooring)			
Packing	20m/roll			
Net Weight	128.0kg/roll			
Recommended Applications	poolside, roof balconies			
Recommended Adhesive from TOLI	dried mortar and concrete	Eco AR600		
	humid mortar and concrete	Epo Gray ST, US Cement, US300S		
	waterproof sub-floor with urethane coated	Epo Gray ST, US Cement, US300S		
	TOLI UNDERLAY SHEET	(indoor use)	US Cement, US300S	
	TOLI NS UNDERLAY SHEET		US Cement	
Welding	Welding rod for heat-welding is available on a color-by-color basis. Edges should be finished with sealing materials such as TOLI NS Seal/TOLI NS Seal II.			
Notes on Installation	◆Seams should be heat-welded. ◆For one week after installation, direct sunlight, sudden change of temperature due to air conditioning, and water washing should be avoided. ◆In indoor applications, TOLI UNDERLAY SHEET is also workable as the sub-floor. Please use the same adhesive for both top and bottom of UNDERLAY SHEET. In exterior or semi-exterior applications, do not use TOLI UNDERLAY SHEET (page 297) . ◆Where you can expect the floor will get wet, NS550 GARDENT should be installed in accordance with the method for humid mortar and concrete. Also edges should be finished with NS Seal/NS Seal II. ◆For roof balconies, the sub-floor is frequently prepared by "the waterproof layer with concrete". In terms of structure, this type of sub-floor may absorb a lot of water. Installation of a vinyl sheet on it cannot be recommended because that will cause swollenness and peeling off of the sheet product.			
Recommended Way of Maintenance from TOLI	◆In outdoor places do not apply the wax. ◆New FB Wax, U Wax, and T Wax (Non-shiny and Antibacterial) are recommendable. Please apply the wax uniformly and thinly so that it will not be pooled in dented parts of surface embossing.			
Others	◆NS550 GARDENT is finished with special treatment for the use at the poolside. Because of this, in case you install this product in secluded rooms with no ventilation, you might feel abnormal odor. However, it is not harmful to human bodies. ◆Please bear in mind that surface embossing cannot always match on the joints. ◆When you install NS Sheet for outdoor or semi-outdoor use, it might not fully perform without prescribed inclination. ◆When you finish the edge with TOLI NS Seal at the a temperature in summer, the bubble might be caused on the joints. You can avoid that by decreasing Liquid B of NS Seal by 50 to 75%. In that case please do not walk on the floor for 24hours after installation because it will take time to be hardened. ◆Please be aware that some rubber casters might cause color-contamination. ◆Please note that the product has the indigenous odor from its materials.			

MADE IN JAPAN



NS551



NS562



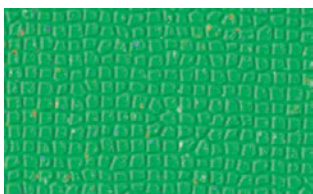
NS558



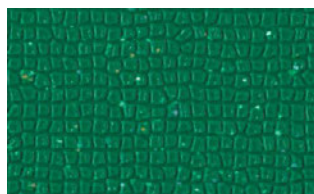
NS553



NS557



NS552



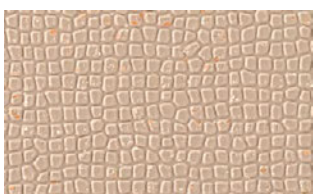
NS556



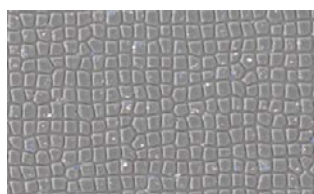
NS551



NS555



NS560



NS559

NS550 GARDENT

category: slip-resistant and heat-insulating vinyl sheet



◆ Weather Resistance

<Testing in accordance with JIS A 1415>

Expose the floor to Xenon Arc Lamp for 4000 hours and check the appearance.



before testing

after 500 hours

after 1000 hours

after 2000 hours

after 4000 hours

<Testing in accordance with ASTM G90 - EMMAQUA method>

Conduct the testing of EMMAQUA method in Phoenix, Arizona. After 6 months of exposure to the light, check the appearance.



before testing

after 6 months

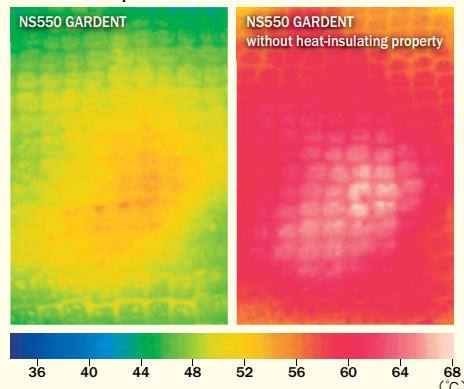
◆ Slip Resistance <in accordance with JIS A 1454 (OY-PULL method), barefoot>

	C.S.R-B value	
	wet	0.3% soapy water
2.0mm vinyl sheet	0.74	0.63
NS550 GARDENT	1.03	0.99

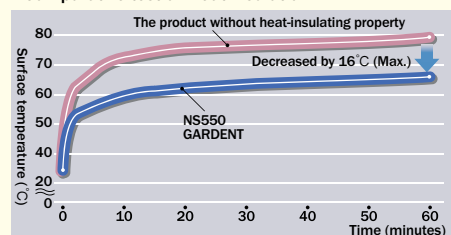
● Excellent heat-insulating property

Excellent heat-insulating property keeps the floor covering's surface temperature from going up, so you can freely walk barefoot on it.

■ Surface temperature distribution shown on the thermal graph



■ Comparative test on heat insulation



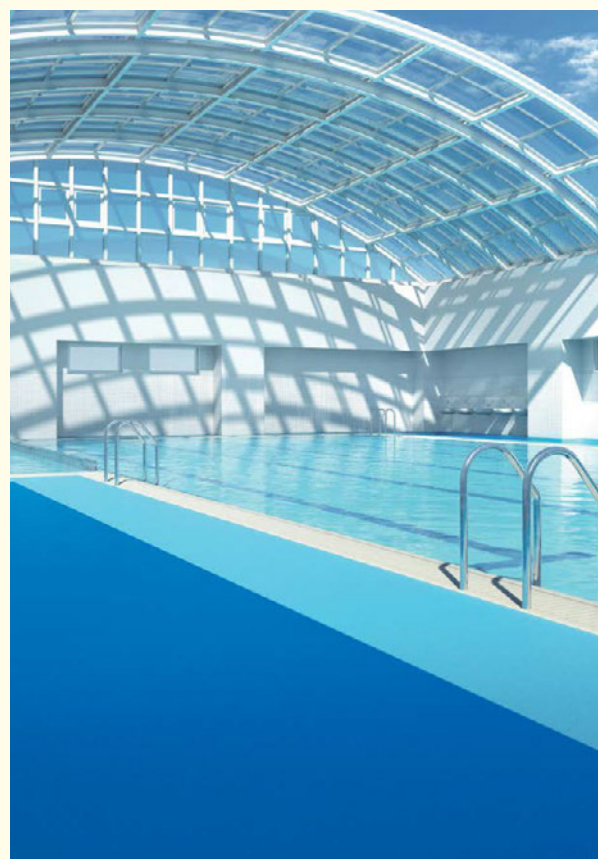
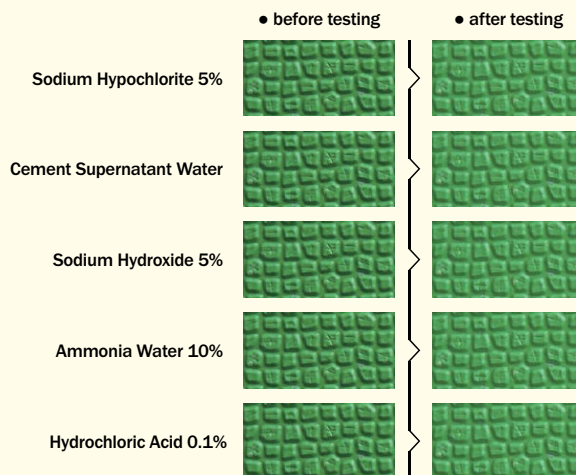
<Test method>

After keeping the floor covering under certain temperature (27.5°C • 40%RH) for 1 day, expose it to the light (height of light: 18cm) of a 200W Downlight and respectively measure the surface temperature using a thermal tracer before and after the exposure.

◆ Chemical Resistance

<Test method>

Lay an absorbent cotton on the floor surface, drip 1ml of chemical on it, and cover with the watch glass. After leaving it for 24hours, clean the floor covering with neutral detergent and alcohol, wipe with gauze, and check the appearance.



▲ NS551/NS555