

HOSPILEUM NW

category:low-maintenance vinyl sheet
with cushion backing

No need to apply the wax. Just by easy cleaning, beautiful appearance can be maintained for long. HOSPILEUM NW is a 2mm vinyl sheet with foamed layer which has excellent shock absorption and durability.



Long Life



Weight Saving
Easy Maintenance

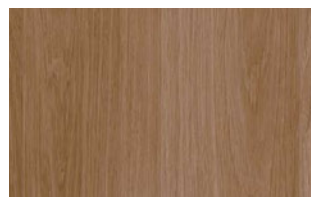


Specification	overall thickness	2.0mm	width×length	1820mm×9m
	others	Antibacterial & Antivirus Finished / Highly Durable UV-Coated Surface		
JIS Registered No.	NO.GB0507188 (JIS A 5705 Vinyl Sheet Flooring)			
Packing	9m/roll			
Net Weight	27.6kg/roll			
Performance	Wear Resistance	(EN649) Group T		
Recommended Adhesive from TOLI	dried mortar and concrete	Eco Royal Cement, Eco AR600		
	heavy traffic use	Epo Gray S, US Cement		
	The wards and living rooms where beds with double-row casters are used	Epo Gray ST, US Cement, US Cement (less-smelly), US200		
	humid mortar and concrete	Epo Gray ST, US Cement, US Cement (less-smelly), US200		
	TOLI UNDERLAY SHEET	US Cement, US Cement (less-smelly), US200		
Welding/Seam Finish	♦Welding rod for heat-welding (antibacterial finished) is available on a color-by-color basis. ♦JOINT SHIELD method (JS Method) by TOLI JOINT SHIELD is also applicable.			
Notes on Installation	♦Seams should be heat-welded or finished with TOLI JOINT SHIELD. ♦TOLI JOINT SHIELD can also work on the top of TOLI UNDERLAY SHEET, but when partial weight will be put on the floor (such as heavy stuff or casters), the seam joints should not be finished with TOLI JOINT SHIELD. ♦When you install 2 different sheets, each edge should be jointed at the seam. (Do not cut in the middle of the sheet.) ♦For one week after installation, direct sunlight, sudden change of temperature due to air conditioning, and water washing should be avoided. ♦Please do not use the urethane adhesive other than US Cement, US Cement (less-smelly), US200. ♦As the sub-floor material, the underlayment like TOLI UNDERLAY SHEET (page 297) is also workable. Apply the same adhesive for both upside and downside of the underlayment. Please note that the durability to dynamic load will be degraded when you install with the underlayment. ♦When you install HOSPILEUM NW in the places where rollaway beds are used (e.g. a patient room of the hospital, a living room of the welfare facility and so forth), the epoxy adhesive such as TOLI Epo Gray ST and urethane adhesive such as US Cement, US Cement (less-smelly), US200 should be used even if the humidity of the sub-floor is less than 8%.			
Recommended Way of Maintenance from TOLI	♦No need to apply the maintenance wax on the surface. Clean the floor every day with an auto scrubber or a wet rag wrung out tightly. Use the detergent for fixed contamination. ♦Even if the wax is applied on the surface, it does not affect the quality of NW series. ♦For a large facility, an abstergent auto scrubber is more recommendable. ♦High speed buffing should be avoided. Otherwise highly durable UV coating will be abraded.			
Others	♦At the entrance of the building, the dust control mat should be laid in order to avoid soils and sands from outside. ♦To prepare the floor which is durable to rolling loads, please fully check the combination of HOSPILEUM NW and the sub-floor, the adhesive, and the loads. For instance, when the sub-floor is too weak, HOSPILEUM NW might be destroyed from underneath. ♦Please be aware that some rubber casters might cause color-contamination. ♦Please note that the product has the indigenous odor from its materials.			

MADE IN JAPAN

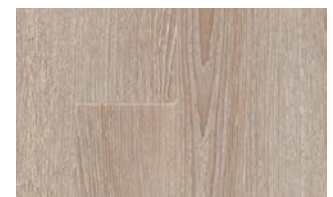


TS2407



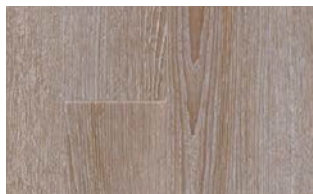
TS2401

OAK



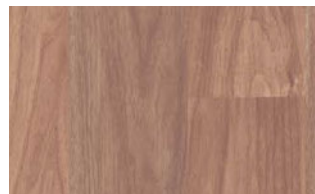
TS2402

ASH



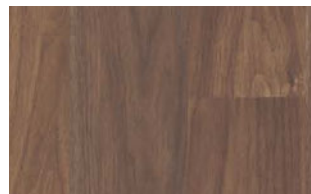
TS2403

ASH



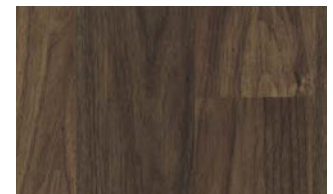
TS2404

WALNUT



TS2405

WALNUT



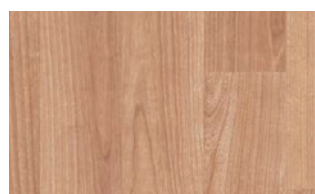
TS2406

WALNUT



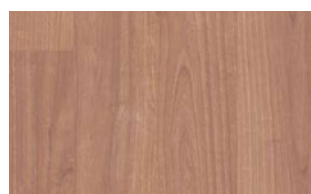
TS2407

CHERRY



TS2408

CHERRY



TS2409

CHERRY



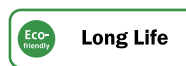
TS2410

OAK

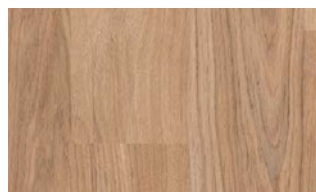
HOSPILEUM NW

category: low-maintenance vinyl sheet
with cushion backing

TOLI



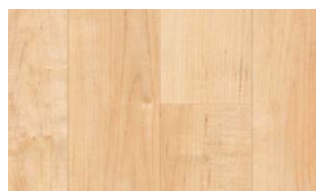
TS2411 OAK



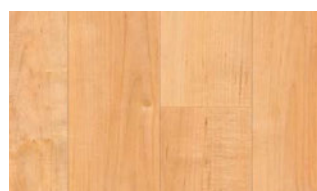
TS2412 OAK



TS2413 HERRINGBONE



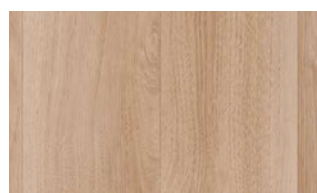
TS2414 MAPLE



TS2415 MAPLE



TS2416 MAPLE



TS2417 WALNUT



TS2418 OAK



▲ TS2401



▲ TS2416

◆ Antibacterial Performance <in accordance with JIS Z 2801> In JIS testing criteria, when the value is more than 2.0, the product has sufficient antibacterial property.

	Escherichia Coli	Staphylococcus Aureus	MRSA
HOSPILEUM NW	More than 2.0	More than 2.0	More than 2.0

☆ Conducted by KAKEN TEST CENTER.

◆ Durability to Rolling Loads <in accordance with JIS A 1454: Caster Rilling Test>

	HOSPILEUM NW	
Time until the floor covering swells	More than 180 minutes (1st stage test by wheels with 110mm Φ)	Less than 30 minutes (2nd stage test by wheels with 46mm Φ)

1st stage test: JIS A 1454: Caster Rilling Test (load per unit area: approx. 900N/cm²)

2nd stage test: Independent test by TOLI (load per unit area: approx. 2,700N/cm²)

HOSPILEUM NW

category:low-maintenance vinyl sheet
with cushion backing

No need to apply the wax. Just by easy cleaning, beautiful appearance can be maintained for long. HOSPILEUM NW is a 2mm vinyl sheet with foamed layer which has excellent shock absorption and durability.



Long Life



Weight Saving
Easy Maintenance



Specification	overall thickness	2.0mm	width×length	1820mm×9m
	others	Antibacterial & Antivirus Finished / Highly Durable UV-Coated Surface		
JIS Registered No.	NO.GB0507188 (JIS A 5705 Vinyl Sheet Flooring)			

Packing	9m/roll		
Net Weight	27.6kg/roll		
Performance	Wear Resistance	(EN649) Group T	
Recommended Adhesive from TOLI	See page 290.		
Welding/Seam Finish	See page 290.		
Notes on Installation	See page 290.		
Recommended Way of Maintenance from TOLI	See page 290.		
Others	See page 290.		

MADE IN JAPAN



TS2419



TS2420



TS2421



TS2422



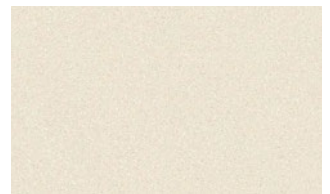
TS2423



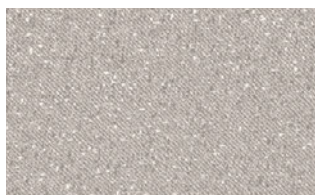
TS2424



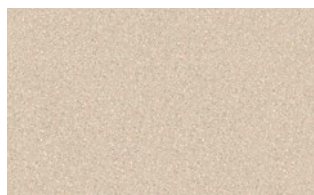
TS2425



TS2426



TS2427



TS2428



TS2429



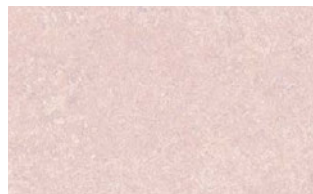
TS2430



TS2431



TS2432



TS2433 LINOLEUM



TS2434 LINOLEUM



TS2435 LINOLEUM



TS2436 LINOLEUM



TS2437 LINOLEUM

HOSPILEUM NW

category: low-maintenance vinyl sheet
with cushion backing



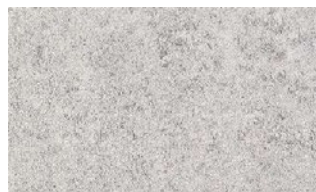
TS2438 LINOLEUM



TS2439 LINOLEUM



TS2440 LINOLEUM



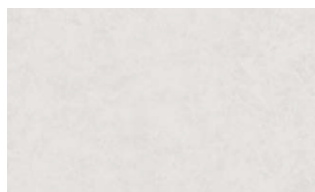
TS2441 LINOLEUM



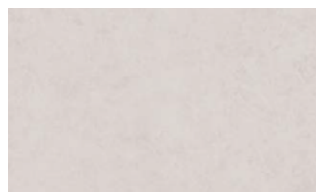
TS2442 LINOLEUM



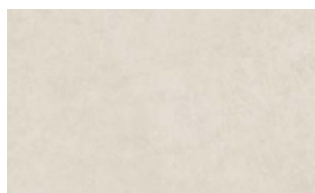
TS2443 LINOLEUM



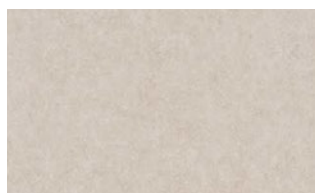
TS2444



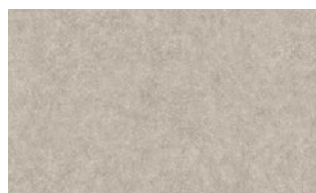
TS2445



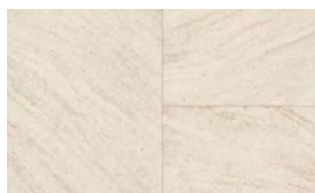
TS2446



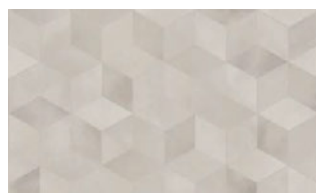
TS2447



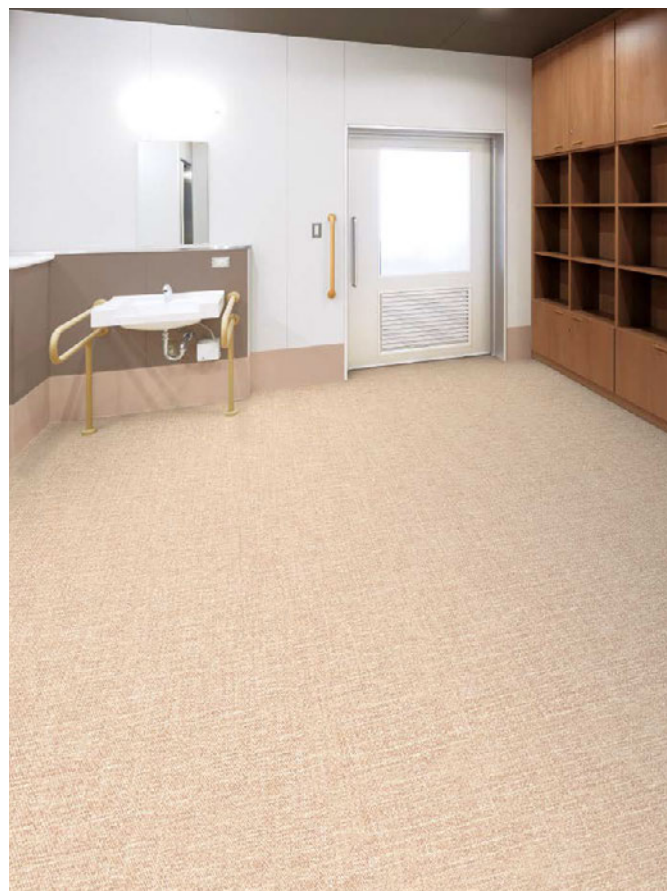
TS2448



TS2449



TS2450



▲ TS2423



▲ TS2450/TS2418

Vinyl Sheet

SF FLOOR NW

category:low-maintenance vinyl sheet
with cushion backing

No need to apply the wax. Just by easy cleaning, beautiful appearance can be maintained for long. SF FLOOR NW is a 2.8mm vinyl sheet with foamed layer which has excellent shock absorption and durability.



Long Life



Weight Saving
Easy Maintenance



Specification	overall thickness		2.8mm	width×length	1820mm×9m
	others		Antibacterial & Antivirus Finished / Highly Durable UV-Coated Surface		
JIS Registered No.	NO.GB0507188 (JIS A 5705 Vinyl Sheet Flooring)				
Packing	9m/roll				
Net Weight	32.5kg/roll				
Performance	Wear Resistance		(EN649) Group T		
Recommended Adhesive from TOLI	dried mortar and concrete		Eco Royal Cement, Eco AR600		
	heavy traffic use		Epo Gray S, US Cement		
	The wards and living rooms where beds with double-row casters are used		Epo Gray ST, US Cement, US Cement (less-smelly), US200		
	humid mortar and concrete		Epo Gray ST, US Cement, US Cement (less-smelly), US200		
	TOLI UNDERLAY SHEET		US Cement, US Cement (less-smelly), US200		
Welding/Seam Finish	♦Welding rod for heat-welding (antibacterial finished) is available on a color-by-color basis. ♦JOINT SHIELD method (JS Method) by TOLI JOINT SHIELD is also applicable.				
Notes on Installation	♦Seams should be heat-welded or finished with TOLI JOINT SHIELD. ♦TOLI JOINT SHIELD can also work on the top of TOLI UNDERLAY SHEET, but when partial weight will be put on the floor (such as heavy stuff or casters), the seam joints should not be finished with TOLI JOINT SHIELD. ♦When you install 2 different sheets, each edge should be jointed at the seam. (Do not cut in the middle of the sheet.) ♦Please do not use the urethane adhesive other than US Cement, US Cement (less-smelly), US200. ♦For one week after installation, direct sunlight, sudden change of temperature due to air conditioning, and water washing should be avoided. ♦As the sub-floor material, the underlayment like TOLI UNDERLAY SHEET (page 297) is also workable. Apply the same adhesive for both upside and downside of the underlayment. Please note that the durability to dynamic load will be degraded when you install with the underlayment. ♦When you install SF FLOOR NW in the places where rollaway beds are used (e.g. a patient room of the hospital, a living room of the welfare facility and so forth), the epoxy adhesive such as TOLI Epo Gray ST and urethane adhesive such as US Cement, US Cement (less-smelly), US200 should be used even if the humidity of the sub-floor is less than 8%.				
Recommended Way of Maintenance from TOLI	♦No need to apply the maintenance wax on the surface. Clean the floor every day with an auto scrubber or a wet rag wrung out tightly. Use the detergent for fixed contamination. ♦Even if the wax is applied on the surface, it does not affect the quality of NW series. ♦For a large facility, an abstergent auto scrubber is more recommendable. ♦High speed buffing should be avoided. Otherwise highly durable UV coating will be abraded.				
Custom Order	If you ask for a different thickness, please contact TOLI sales rep.				
Others	♦At the entrance of the building, the dust control mat should be laid in order to avoid soils and sands from outside. ♦To structure the heavy duty floor, “sub-floor”, “load”, and “adhesive” will be 3 important factors. Please pay careful attention to the combination of strength of sub-floor, type of adhesive, and load put on the floor. ♦Please be aware that some rubber casters might cause color-contamination. ♦Please note that the product has the indigenous odor from its materials.				

MADE IN JAPAN



28SF4206



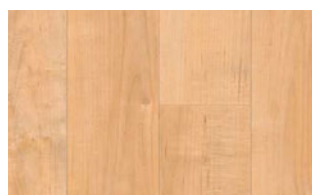
▲ 28SF4201



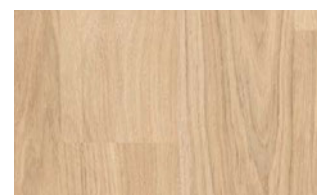
28SF4201 MAPLE



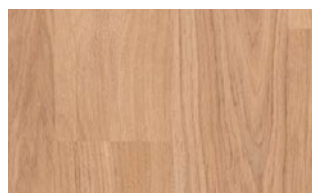
28SF4202 MAPLE



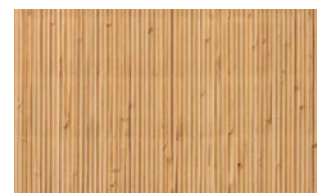
28SF4203 MAPLE



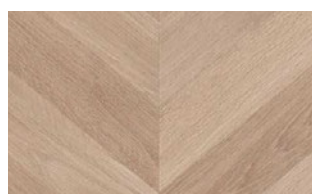
28SF4204 OAK



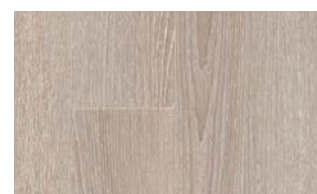
28SF4205 OAK



28SF4206 CANE



28SF4207 HERRINGBONE



28SF4208 ASH

SF FLOOR NW

category: low-maintenance vinyl sheet
with cushion backing



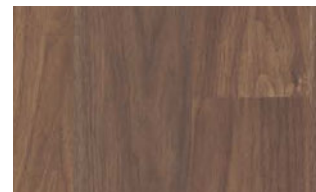
28SF4209 ASH



28SF4210 OAK



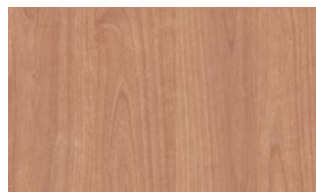
28SF4211 WALNUT



28SF4212 WALNUT



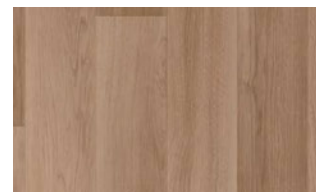
28SF4213 CHERRY



28SF4214 CHERRY



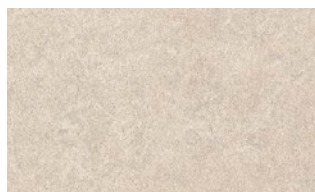
28SF4215 JAPANESE CYPRESS



28SF4216 WALNUT



28SF4217 OAK



28SF4218 LINOLEUM



28SF4219 LINOLEUM



28SF4220 LINOLEUM



28SF4221 LINOLEUM

◆ Durability to Rolling Loads <in accordance with JIS A 1454: Caster Rilling Test>

	SF FLOOR NW	
Time until the floor covering swells	More than 180 minutes (1st stage test by wheels with 110mm Φ)	Less than 30 minutes (2nd stage test by wheels with 46mm Φ)

1st stage test: JIS A 1454: Caster Rilling Test (load per unit area: approx. 900N/cm²)
2nd stage test: Independent test by TOLI (load per unit area: approx. 2,700N/cm²)

◆ Antibacterial Performance <in accordance with JIS Z 2801>

In JIS testing criteria, when the value is more than 2.0, the product has sufficient antibacterial property.

	Escherichia Coli	Staphylococcus Aureus	MRSA
SF FLOOR NW	More than 2.0	More than 2.0	More than 2.0

☆ Conducted by KAKEN TEST CENTER



▲ 28SF4217

Vinyl Sheet

SF FLOOR NW

category:low-maintenance vinyl sheet
with cushion backing

No need to apply the wax. Just by easy cleaning, beautiful appearance can be maintained for long. SF FLOOR NW is a 2.8mm vinyl sheet with foamed layer which has excellent shock absorption and durability.



Long Life

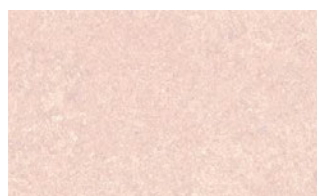


Weight Saving
Easy Maintenance

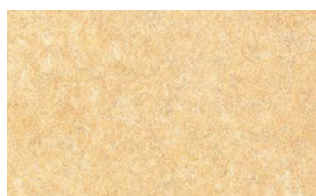


Specification	overall thickness	2.8mm	width×length	1820mm×9m
	others	Antibacterial & Antivirus Finished / Highly Durable UV-Coated Surface		
JIS Registered No.	NO.GB0507188 (JIS A 5705 Vinyl Sheet Flooring)			
Packing	9m/roll			
Net Weight	32.5kg/roll			
Performance	Wear Resistance	(EN649) Group T		
Recommended Adhesive from TOLI	See page 294.			
Welding/Seam Finish	See page 294.			
Notes on Installation	See page 294.			
Recommended Way of Maintenance from TOLI	See page 294.			
Custom Order	See page 294.			
Others	See page 294.			

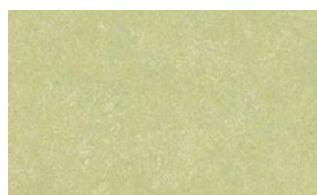
MADE IN JAPAN



28SF4222 LINOLEUM



28SF4223 LINOLEUM



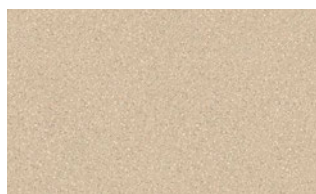
28SF4224 LINOLEUM



28SF4225



28SF4226



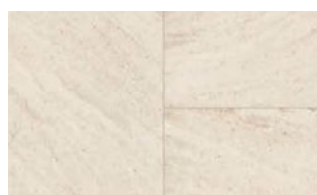
28SF4227



28SF4228



28SF4229



28SF4230



▲ 28SF4218/28SF4224

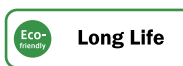


▲ 28SF4230

CARESAFE NW

category:low-maintenance vinyl sheet
with cushion backing

No Wax cushion-backed vinyl sheet with 4.5mm thickness, characterized by its excellent shock absorption (G value: less than 100).



Specification	overall thickness		4.5mm	width×length	1820mm×9m
	others		Antibacterial & Antivirus Finished / Highly Durable UV-Coated Surface		
JIS Registered No.	NO.GB0507188 (JIS A 5705 Vinyl Sheet Flooring)				
Packing	9m/roll				
Net Weight	45.9kg/roll				
Recommended Adhesive from TOLI	dried mortar and concrete	Eco Royal Cement, Eco AR600			
	heavy traffic use	Epo Gray S, US Cement			
	The wards and living rooms where beds with double-row casters are used	Epo Gray ST, US Cement, US Cement (less-smelly), US200			
	humid mortar and concrete	Epo Gray ST, US Cement, US Cement (less-smelly), US200			
Welding/Seam Finish	♦Welding rod for heat-welding (antibacterial finished) is available on a color-by-color basis. ♦JOINT SHIELD method (JS Method) by TOLI JOINT SHIELD is also applicable.				
Notes on Installation	♦Seams should be heat-welded or finished with TOLI JOINT SHIELD. ♦When you install 2 different sheets, each edge should be jointed at the seam. (Do not cut in the middle of the sheet.) ♦Please do not use the urethane adhesive other than US Cement, US Cement (less-smelly), US200. ♦For one week after installation, direct sunlight, sudden change of temperature due to air conditioning, and water washing should be avoided. ♦When you install CARESAFE NW in the places where rollaway beds are used (e.g. a patient room of the hospital, a living room of the welfare facility and so forth), the epoxy adhesive such as TOLI Epo Gray ST and urethane adhesive such as US Cement, US Cement (less-smelly), US200 should be used even if the humidity of the sub-floor is less than 8%.				
Recommended Way of Maintenance from TOLI	♦No need to apply the maintenance wax on the surface. Clean the floor every day with an auto scrubber or a wet rag wrung out tightly. Use the detergent for fixed contamination. ♦Even if the wax is applied on the surface, it does not affect the quality of NW series. ♦For a large facility, an abstergent auto scrubber is more recommendable. ♦High speed buffing should be avoided. Otherwise highly durable UV coating will be abraded. ♦CARESAFE NW is for flat lay only and cannot be coved. ♦CARESAFE NW cannot be installed on the top of UNDERLAY SHEET.				
Others	♦At the entrance of the building, the dust control mat should be laid in order to avoid soils and sands from outside. ♦To structure the heavy duty floor, “sub-floor”, “load”, and “adhesive” will be 3 important factors. Please pay careful attention to the combination of strength of sub-floor, type of adhesive, and load put on the floor. ♦Please be aware that some rubber casters might cause color-contamination. ♦Please note that the product has the indigenous odor from its materials.				

MADE IN JAPAN

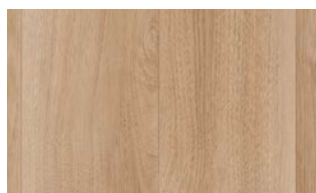


◆ Shock Absorption of Floor Covering <JIS A 6519>

Type of Floor Covering	Overall thickness (mm)	Impact Strength	
		G Value	m/S ²
SF FLOOR NW 2.8mm+ UNDERLAY SHEET 4.5mm	7.3	84	823
CARESAFE NW	4.5	94	921
SF FLOOR NW	2.8	118	1156
GA-100	6.5	124	1215
Vinyl Sheet	2.0	145	1421
Concrete	N/A	150	1470



CAR401 MAPLE



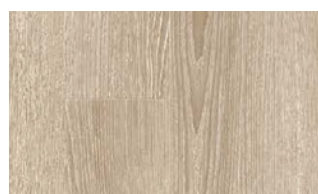
CAR402 WALNUT



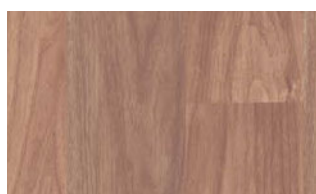
CAR403 HERRINGBONE



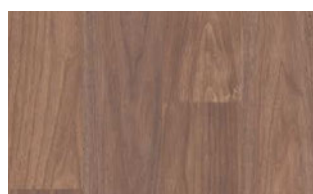
CAR404 OAK



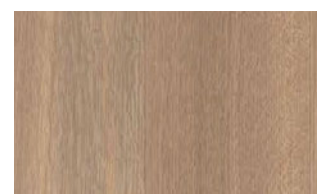
CAR405 ASH



CAR406 WALNUT



CAR407 WALNUT



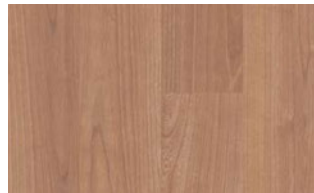
CAR408 OAK

CARESAFE NW

category:low-maintenance vinyl sheet
with cushion backing



|| CAR409 CHERRY



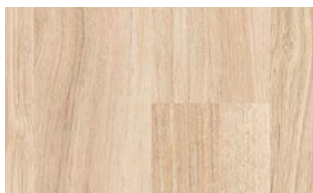
|| CAR410 CHERRY



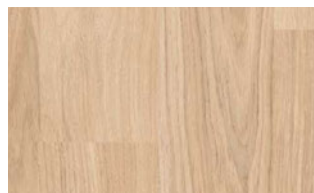
|| CAR411 JAPANESE CYPRESS



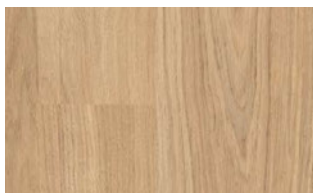
|| CAR412 MAPLE



|| CAR413 OAK



|| CAR414 OAK



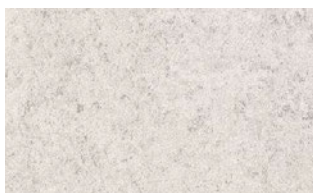
|| CAR415 OAK



|| CAR416 TERRAZZO



|| CAR417 TERRAZZO



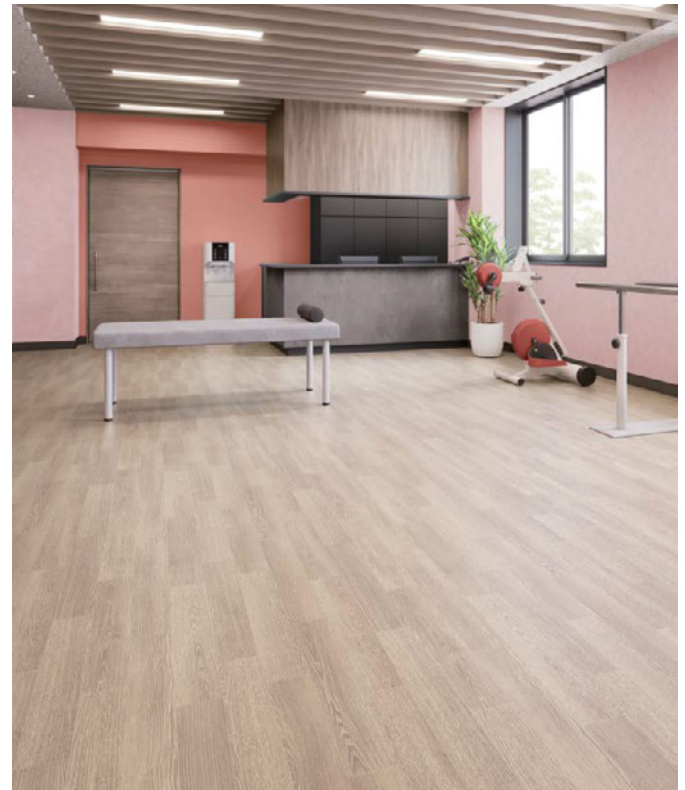
|| CAR418 LINOLEUM



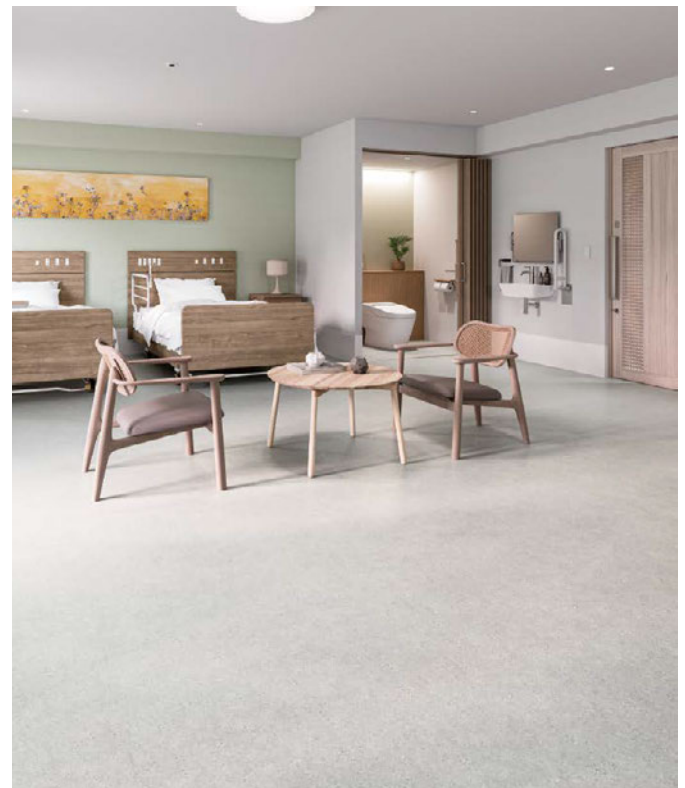
|| CAR419 LINOLEUM



|| CAR420 LINOLEUM



▲ CAR405



▲ CAR418

◆ **Antibacterial Performance** <in accordance with JIS Z 2801>
In JIS testing criteria, when the value is more than 2.0, the product has sufficient antibacterial property.

	Escherichia Coli	Staphylococcus Aureus	MRSA
CARESAFE NW	More than 2.0	More than 2.0	More than 2.0

☆ Conducted by KAKEN TEST CENTER

◆ **Durability to Rolling Loads** <in accordance with JIS A 1454: Caster Rilling Test>

	CARESAFE NW	
Time until the floor covering swells	More than 180 minutes (1st stage test by wheels with 110mm Φ)	Less than 30 minutes (2nd stage test by wheels with 46mm Φ)

1st stage test: JIS A 1454: Caster Rilling Test (load per unit area: approx. 900N/cm²)
2nd stage test: Independent test by TOLI (load per unit area: approx. 2,700N/cm²)

Vinyl Sheet