

HITOE GRANZA

category: low-maintenance vinyl sheet

Minerals' own expressive texture and delicate contrast. Impressive color tones inspired by nature. New standard pattern with sheer persistence to authentic natural beauty.



Specification	overall thickness		2.0mm	width×length	2000mm×9m
	others Antibacterial & Antivirus Finished / Highly Durable UV-Coated Surface				
Packing	9m/roll				
Net Weight	45.0kg/roll				
Recommended Adhesive from TOLI	dried mortar and concrete	Eco AR600			
	heavy traffic use	Epo Gray S			
	The wards and living rooms where beds with double-row casters are used	Epo Gray S, US Cement, US Cement (less-smelly), US200			
	humid mortar and concrete	Epo Gray S, US Cement, US Cement (less-smelly), US200			
	TOLI UNDERLAY SHEET	US Cement, US Cement (less-smelly), US200			
Welding/Seam Finish	♦Welding rod for heat-welding (antibacterial finished) is available on a color-by-color basis. ♦JOINT SHIELD method (JS Method) by TOLI JOINT SHIELD is also applicable.				
Notes on Installation	♦Seams should be heat-welded or finished with TOLI JOINT SHIELD. ♦TOLI JOINT SHIELD can also work on the top of TOLI UNDERLAY SHEET, but when partial weight will be put on the floor (such as heavy stuff or casters), the seam joints should not be finished with TOLI JOINT SHIELD. ♦When you install 2 different sheets, each edge should be jointed at the seam. (Do not cut in the middle of the sheet.) ♦For one week after installation, direct sunlight, sudden change of temperature due to air conditioning, and water washing should be avoided. ♦Please do not use the urethane adhesive other than US Cement, US Cement (less-smelly), US200. ♦As the sub-floor material, the underlayment TOLI UNDERLAY SHEET (page 297) is also workable. Apply the same adhesive for both upside and downside of the underlayment. Please note that the durability to dynamic load will be degraded when you install with the underlayment. ♦When you install the sheet in the places where rollaway beds are used (e.g. a patient room of the hospital, a living room of the welfare facility and so forth), the epoxy adhesive such as TOLI Epo Gray S and the urethane adhesive such as US Cement, US Cement (less-smelly), US200 should be used even if the humidity of the sub-floor is less than 8%. ♦Under the low temperature in winter time, the vinyl sheet may not be easily laid flat after being unrolled. In that case raise the room temperature and leave the sheet temporarily.				
Recommended Way of Maintenance from TOLI	♦No need to apply the maintenance wax on the surface. Clean the floor every day with an auto scrubber or a wet rag wrung out tightly. Use the neutral detergent for fixed contamination. ♦Even if the wax is applied on the surface, it does not affect the quality of NW series. ♦For a large facility, an abstergent auto scrubber is more recommendable. ♦High speed buffing should be avoided. Otherwise highly durable UV coating will be abraded.				
Others	♦At the entrance of the building, the dust control mat should be laid in order to avoid soils and sands from outside. ♦To prepare the floor which is durable to rolling loads, please fully check the combination of the floor covering, the sub-floor, the adhesive, and the loads. For instance, when the sub-floor is too weak, the floor covering might be destroyed from underneath. ♦Please be aware that some rubber casters might cause color-contamination. ♦Please note that the product has the indigenous odor from its materials.				

MADE IN JAPAN



HTE1002

◆ **Antibacterial Performance** <in accordance with JIS Z 2801>
In JIS testing criteria, when the value is more than 2.0, the product has sufficient antibacterial property.

	Escherichia Coli	Staphylococcus Aureus	MRSA
HITOE GRANZA	More than 2.0	More than 2.0	More than 2.0

Conducted by KAKEN TEST CENTER

◆ **Durability to Rolling Loads** <in accordance with JIS A 1454: Caster Rilling Test>

	HITOE GRANZA	
Time until the floor covering swells	More than 180 minutes (1st stage test by wheels with 110mm Φ)	Less than 30 minutes (2nd stage test by wheels with 46mm Φ)

1st stage test: JIS A 1454: Caster Rilling Test (load per unit area: approx. 900N/cm²)

2nd stage test: Independent test by TOLI (load per unit area: approx. 2,700N/cm²)

Adhesive:Epo Gray S



HTE1001



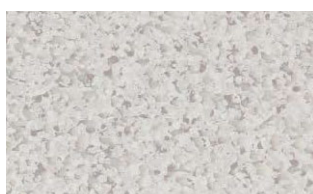
HTE1002



HTE1003



HTE1004



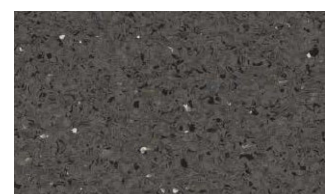
HTE1005



HTE1006



HTE1007



HTE1008

HITOE GRANZA

category: low-maintenance vinyl sheet



Vinyl Sheet

▲ HTE1008/HTE1015



|| HTE1009



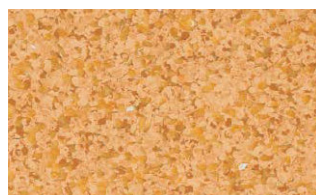
|| HTE1010



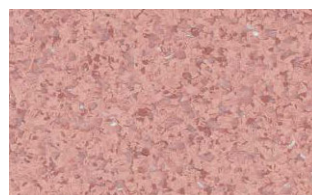
|| HTE1011



|| HTE1012



|| HTE1013



|| HTE1014



|| HTE1015



|| HTE1016



|| HTE1017

HITOE FINE

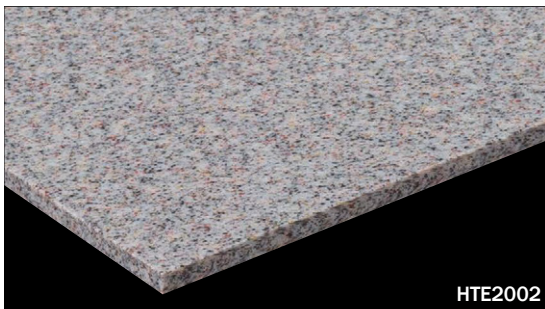
category: low-maintenance vinyl sheet

Sand-like fine texture and deep color tones. Ultimate plain pattern in pursuit of beauty of texture.



Specification	overall thickness	2.0mm	width×length	2000mm×9m
	others Antibacterial & Antivirus Finished / Highly Durable UV-Coated Surface			
Packing	9m/roll			
Net Weight	43.2kg/roll			
Recommended Adhesive from TOLI	dried mortar and concrete	Eco AR600		
	heavy traffic use	Epo Gray S		
	The wards and living rooms where beds with double-row casters are used	Epo Gray S, US Cement, US Cement (less-smelly), US200		
	humid mortar and concrete	Epo Gray S, US Cement, US Cement (less-smelly), US200		
	TOLI UNDERLAY SHEET	US Cement, US Cement (less-smelly), US200		
Welding/Seam Finish	♦Welding rod for heat-welding (antibacterial finished) is available on a color-by-color basis. ♦JOINT SHIELD method (JS Method) by TOLI JOINT SHIELD is also applicable.			
Notes on Installation	See page 268.			
Recommended Way of Maintenance from TOLI	See page 268.			
Others	See page 268.			

MADE IN JAPAN



◆ Antibacterial Performance <in accordance with JIS Z 2801>

In JIS testing criteria, when the value is more than 2.0, the product has sufficient antibacterial property.

	Escherichia Coli	Staphylococcus Aureus	MRSA
HITOE FINE	More than 2.0	More than 2.0	More than 2.0

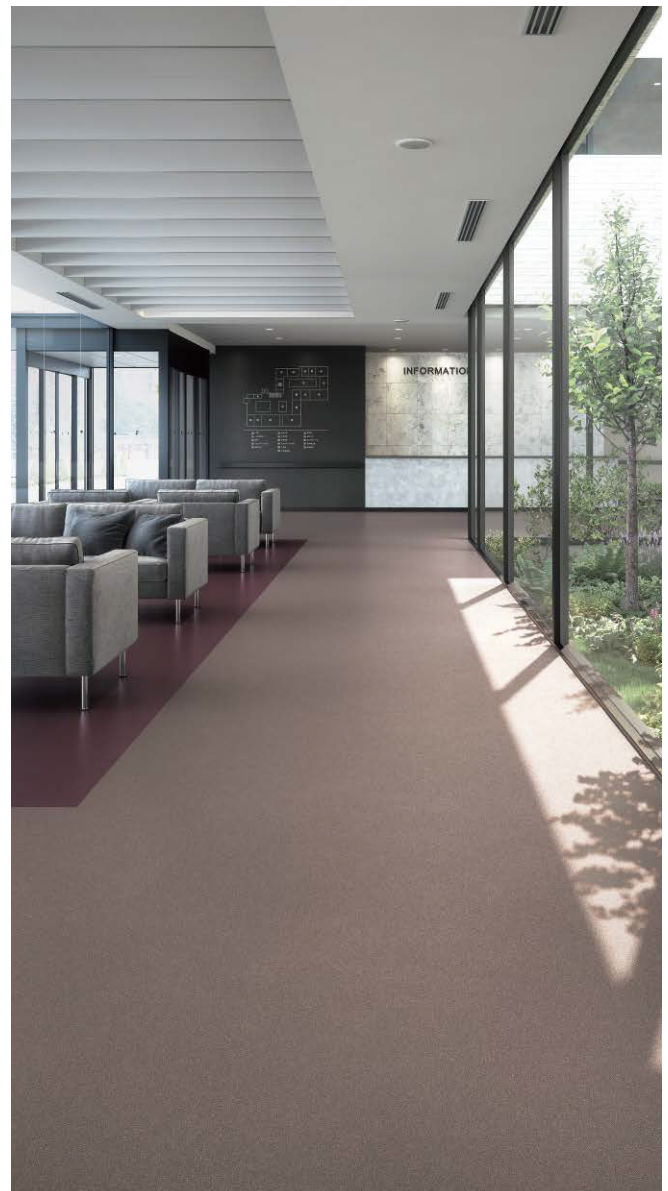
Conducted by KAKEN TEST CENTER

◆ Durability to Rolling Loads <in accordance with JIS A 1454: Caster Rilling Test>

	HITOE FINE	
Time until the floor covering swells	More than 180 minutes (1st stage test by wheels with 110mm Φ)	Less than 30 minutes (2nd stage test by wheels with 46mm Φ)

1st stage test: JIS A 1454: Caster Rilling Test (load per unit area: approx. 900N/cm²)

2nd stage test: Independent test by TOLI (load per unit area: approx. 2,700N/cm²)
Adhesive:Epo Gray S



▲ HTE2007/HTE2005

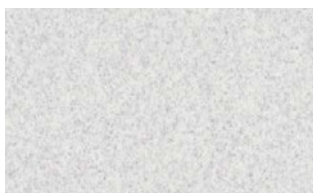
HITOE FINE

category: low-maintenance vinyl sheet



Vinyl Sheet

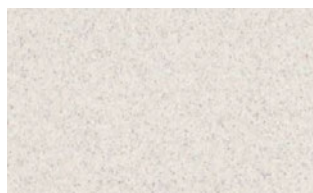
▲ HTE2010/HTE2015



|| HTE2010



|| HTE2004



|| HTE2012



|| HTE2015



|| HTE2001



|| HTE2005



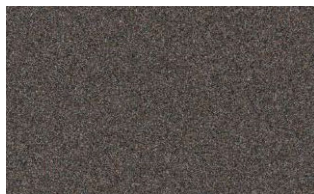
|| HTE2013



|| HTE2008



|| HTE2002



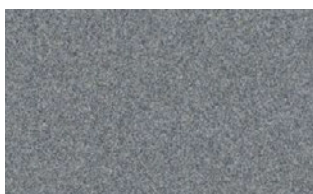
|| HTE2006



|| HTE2014



|| HTE2009



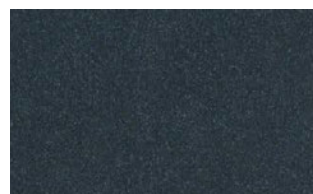
|| HTE2011



|| HTE2003



|| HTE2007



|| HTE2016