

## Japan Design × Pursuit of Comfort

Japanese Feeling and Reliable Quality

Interior Trend

Delicate aesthetic feeling which blends and deepens tradition and nature.  
Reliable quality based on keen attention to details and technical strength.

Relaxing space using light and soft colors.  
Cozy space with the deep feel by original texture of the materials.

Pleasant cooling space using carpet tiles in the motif of water surface.  
Combination of the grayish color and light-colored wooden furniture will make a clear interior space.



▲ GX4423 (page 133)

### # 1 | COMMUNICATION



offices creating  
communications

Now that working styles are diversified, an office is expected to be the place for meeting and interacting.  
In such a space, the irregular layout of floor zoning and furniture will create a comfortable distance between workers, and encourage an active communication.

#### KEY COLOR

bluish light gray

Soft beige like  
solid oak

Fresh light blue

Yellowish verdurous  
green



### # 2 | RELAX



Relaxing office to  
enhance creativity

In the office, it's important to work in a physically and mentally healthy condition.

A cozy space with a sense of warmth will make you feel at home, and enhance the creativity and concentration of people working there.

#### KEY COLOR

Ivory with soft  
texture

Mocha brown as an  
accent

Sage green with a  
sense of peace

Pink beige with  
warmth



Relaxing interior design in a soft and bright tone.  
Grid patterned carpet tiles and pink beige colors accentuate the space.



▲ GX3451 (page 129) / TTN3122 (page 324)



Combination of vibrant geometric-patterned carpet tiles and natural materials create a bright space. Spacious and colorful atmosphere will make you happy and comfortable.



▲ GX3252/GX3254/GX3255 (page 130)

## #3 | REFRESH



Open-plan shopping mall like outdoors

A shopping mall plays a role of "the place of rest and relaxation in the region".

The pleasant indoor space with a sense of openness like a park will provide visitors with an energy in daily life.

### KEY COLOR

Smokey gray with a clear tone



Camel brown like teak



Green like fresh plants



Orange with an energetic feel



## #4 | PRECIOUS



Classy hotel satisfying you physically and mentally

In the hotel focusing on essentially fine quality, careful finish and selected materials will go with its atmosphere.

You can escape from your daily life and spend pleasant time only for yourself.

### KEY COLOR

decent yellow beige



calm and mellow greige



moderately glamorous gold



dark brown with a deep ebony feel



Calm and graceful lounge area.

Well-selected materials and furniture on the top of gorgeous carpet tiles in 1000mm x 1000mm will create a one-of-a-kind space.



▲ GX6254L (page 112)

## #5 | RESPECT



offices highlighting landscapes and histories

In the latest office, people focus on the spaces where regional climates and histories are more evaluated and old things are reused.

The spaces with the a feel of passage of time will stimulate people's thinking and become the comfortable place where new ideas are born.

### KEY COLOR

gray inspired by aged mortar



dry beige like cotton cloth



terra cotta reminiscent of brick and clay



heavy iron black



Stone-look carpet tiles with sensitive color change like layers of earth will match well with aged deep colors. They can be coordinated with both new and old materials.



▲ GX4801 (page 126)

# GX-200

category: carpet tile

Abundant 22 colors of GX-200 can create your originality and also convey a high-end image.



Long Life

Composition	surfaceBCF Nylon 100%		dyeing method of yarn		Piece Dyed	
	base fabricNonwoven Polyester		backing		PVC and Glass Fiber	
Specification	size500mm×500mm		overall thickness		9.0mm	
	pile height		6.0mm (cut pile)			
	gauge1/10		stitch13.5		yarn weight (oz/sq.yd)30.2	
Packing	16pcs/box = 4m <sup>2</sup> /box			Dimension	W 530mm × L 515mm × H 154mm	
Net Weight	20.8kg/box					
Performance	Critical Radiant Flux	(ASTM E648)	Class 1. Average CRF 0.45/cm <sup>2</sup> or higher			
	Smoke Density	(ASTM E662)	Less than 450			
	Flame-retardant	Fire Defense Law in Japan Authorized No.E0000094				
	Antistatic	Less than 1.0kV (JIS L 1021-16, at 23 degrees centigrade, 25%RH)				
	Stain-resistant	Stain Release				
	Formaldehyde Radiation	F☆☆☆☆ Interior-fabrics Performance Evaluation Conference Certified No.J04-30089				
Way of Installation	<div><div><div>↑</div><div>→</div><div>→</div><div>↑</div></div>Quarter Turn</div>					
Recommended Adhesive from TOLI	TOLI ECO GA Cement		for steel or plastic sub-floor		40 to 60 gram/m <sup>2</sup>	
	TOLI ECO GA Cement EX (required quantity)		for mortar and wood sub-floor		60 to 100 gram/m <sup>2</sup>	
Notes on Installation	Apply the adhesive on the whole surface of the sub-floor thinly and evenly. After drying, when the adhesive becomes translucent, install the tiles. Be careful not to put the tiles too tightly.					
Others	◆Please note that the product has the indigenous odor from its materials. ◆Occasionally the direction of cut-piles are partly broken in part, which looks like color shading. This is one of the characteristics of cut-pile carpets and not a manufacturing defect.					

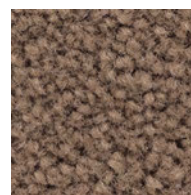
MADE IN JAPAN



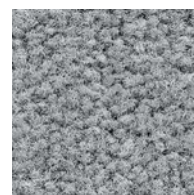
GX2058



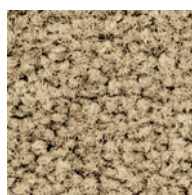
GX2082



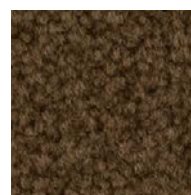
GX2080



GX2073



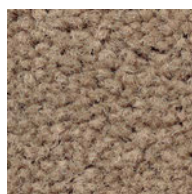
GX2063



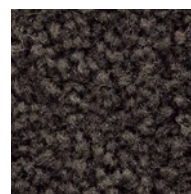
GX2090



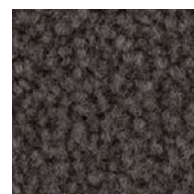
GX2060



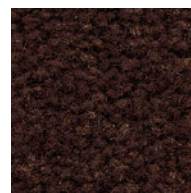
GX2051



GX2081



GX2091



GX2065



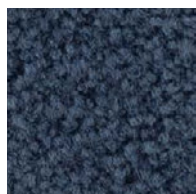
GX2068

▲ GX2054/GX2058/GX2059/GX2067/GX2069/GX2072

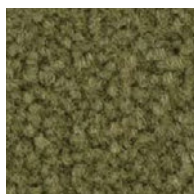


# GX-200

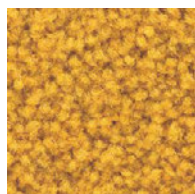
category: carpet tile



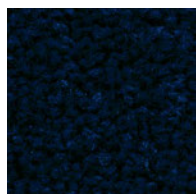
GX2092



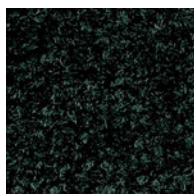
GX2093



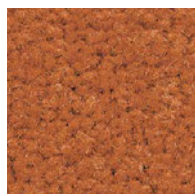
GX2084



GX2072



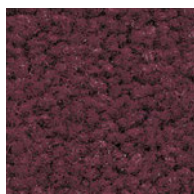
GX2058



GX2067



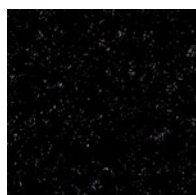
GX2069



GX2064



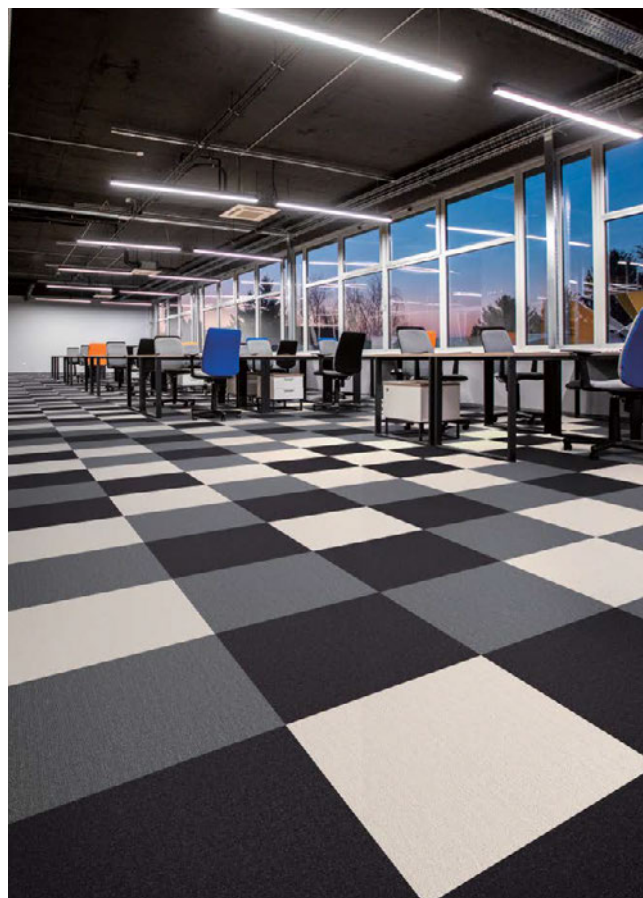
GX2054



GX2059



GX2086



▲ GX2059/GX2060/GX2082



▲ GX2051/GX2072

Carpet  
Tile



# GX-200 GRID CUT

(made-to-order product)

category: carpet tile



Long Life

MADE IN JAPAN

Way of Installation



Monolithic or



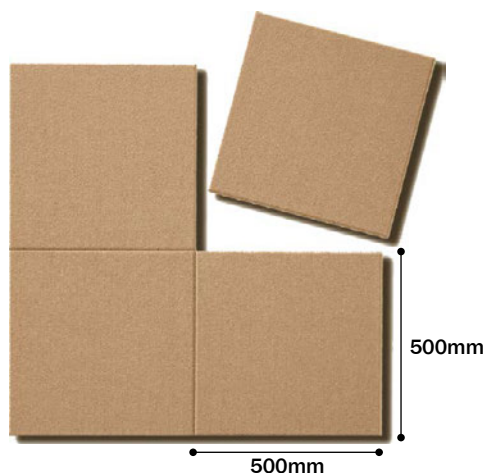
Quarter Turn

## New Concept: Make it 3-dimensional on the joints

- GX-200 GRID CUT is made by beveling each side of GX-200.
- By highlighting each tile form, various new floor images can be created.

## [Color Code of GX-200 GRID CUT]

Put “-GC4” at the end of the color number that you select from GX-200 range. (e.g. GX2051-GC4)



▲ GX2051-GC4



▲ GX2060-GC4/GX2082-GC4

The standard is all the 4 sides beveling, but it can also be done for 1 to 3 sides only.



4 sides beveling  
(=standard)



1 side beveling



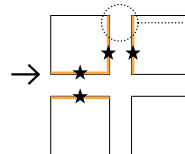
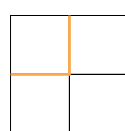
2 sides beveling



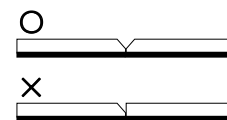
3 sides beveling

※When you place the order of 1 to 3 sides beveling, please contact TOLI sales rep.

In the case of 1 to 3 sides beveling, both sides on the same joint should be beveled as below. Otherwise GRID CUT cannot exactly stand out on the floor.



cross section



All the sides indicated with ★ should be beveled.

# GX-200 METAL DESIGN

(made-to-order product)

category: carpet tile



Long Life

MADE IN JAPAN

Way of  
Installation



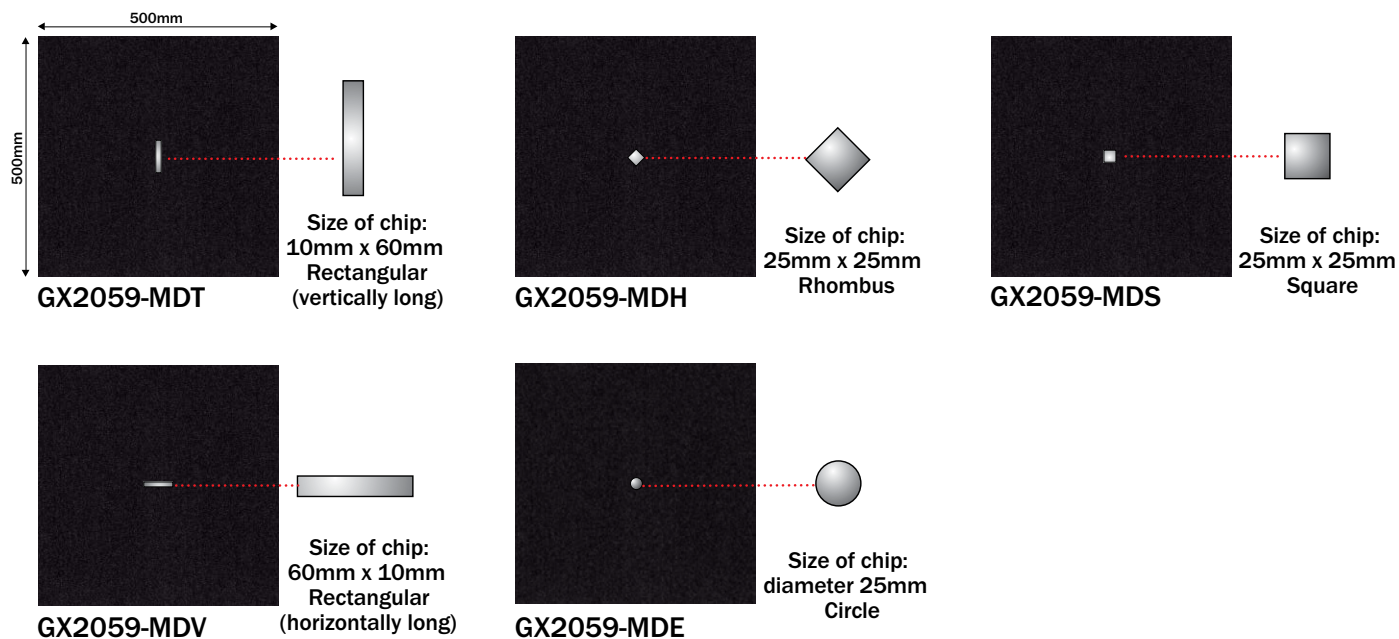
Quarter Turn

Carpet  
Tile

## GX-200 with a stainless chip will create a shipshape image.

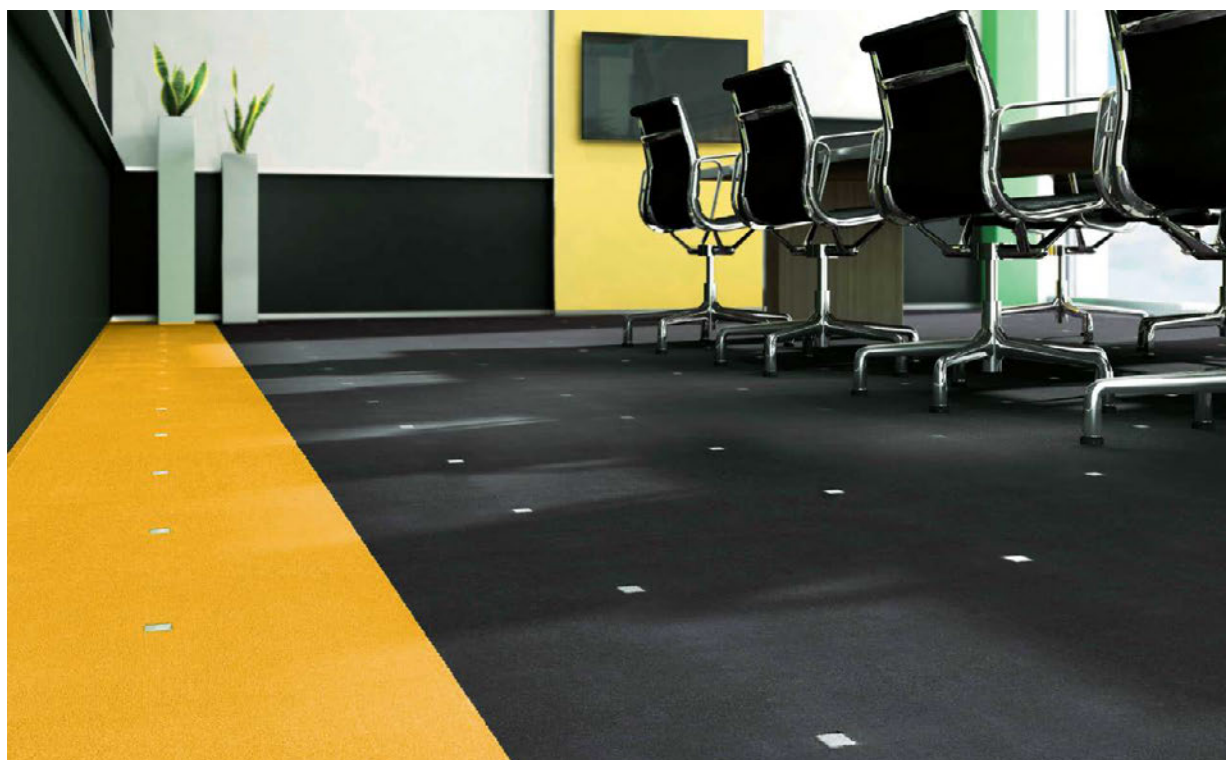
The standard type of GX-200 METAL DESIGN has a metal chip in the center of the tile.

### ● Attachment Position



### [Color Code of GX-200 METAL DESIGN]

All above 5 metal chips can be added to any color from GX-200 range. Select the type of chip and put “-MDT”, “-MDH”, ...etc. at the end of the preferred color. (e.g. GX2051-MDT)



▲ GX2059-MDS/GX2084-MDS



# GX-300

category: carpet tile

GX-300 has a deep solid color image in textured loop piles. Combination with other graphic-designed carpet tiles is also attractive. Stain release performance has been more advanced by Nano Clean finish for all the colors.



Composition	surface		BCF Nylon 100%		dyeing method of yarn		Piece Dyed	
	base fabric		Nonwoven Polyester		backing		PVC and Glass Fiber	
Specification	size		500mm×500mm		overall thickness		8.0mm	
	pile height		H 5.0mm to L 3.0mm (textured loop pile)					
	gauge		1/10	stitch		10.5	yarn weight (oz/sq.yd) 20.9	
Packing	16pcs/box = 4m <sup>2</sup> /box				Dimension		W 530mm × L 515mm × H 136mm	
Net Weight	22.5kg/box							
Performance	Critical Radiant Flux		(ASTM E648)		Class 2 Average CRF 0.22/cm <sup>2</sup> or higher			
	Smoke Density		(ASTM E662)		Less than 450			
	Flame-retardant		Fire Defense Law in Japan Authorized No.E0080033					
	Antistatic		Less than 1.0kV (JIS L 1021-16, at 23 degrees centigrade, 25%RH)					
	Stain-resistant		◆ Stain Release (NANO CLEAN)					
	Formaldehyde Radiation		F☆☆☆☆ Interior-fabrics Performance Evaluation Conference Certified No.J08-30515					
Way of Installation	<div><div><div>↑</div><div>↑</div><div>↑</div><div>↑</div></div>Monolithic</div> or <div><div><div>↑</div><div>→</div><div>→</div><div>↑</div></div>Quarter Turn</div>							
Recommended Adhesive from TOLI	TOLI ECO GA Cement		(required quantity)		for steel or plastic sub-floor		40 to 60 gram/m <sup>2</sup>	
	TOLI ECO GA Cement EX				for mortar and wood sub-floor		60 to 100 gram/m <sup>2</sup>	
Notes on Installation	◆Apply the adhesive on the whole surface of the sub-floor thinly and evenly. After drying, when the adhesive becomes translucent, install the tiles. Be careful not to put the tiles too tightly. ◆Right after installation, something like color-shading could be seen on the surface. This is caused by lying down of piles which will be recovered over time.							
Others	Please note that the product has the indigenous odor from its materials.							

MADE IN JAPAN



GX3003

### NANO CLEAN

“Nano Clean” provides more excellent stain resistance to soils by adding special Nano finish to the existing stain release by water-repellent finished.

※◆ The color codes marked with “Nano Clean” have Nano Clean finish on the surface.



GX3006



GX3043



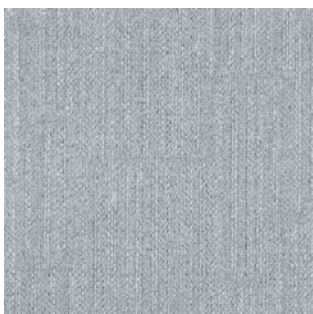
GX3031



GX3035



GX3044



GX3026



GX3039



GX3046



GX3010



# GX-300

category: carpet tile



Carpet  
Tile



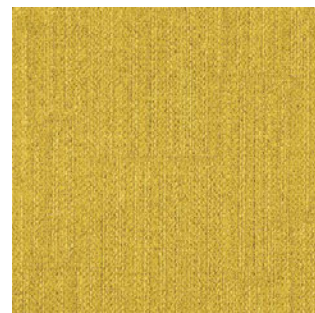
|| GX3054



|| GX3062



|| GX3008



|| GX3028



|| GX3061



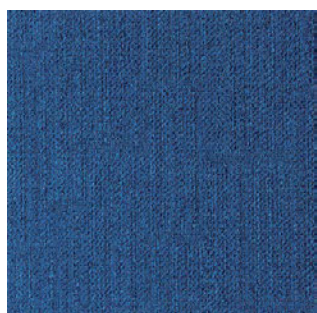
|| GX3063



|| GX3059



|| GX3003



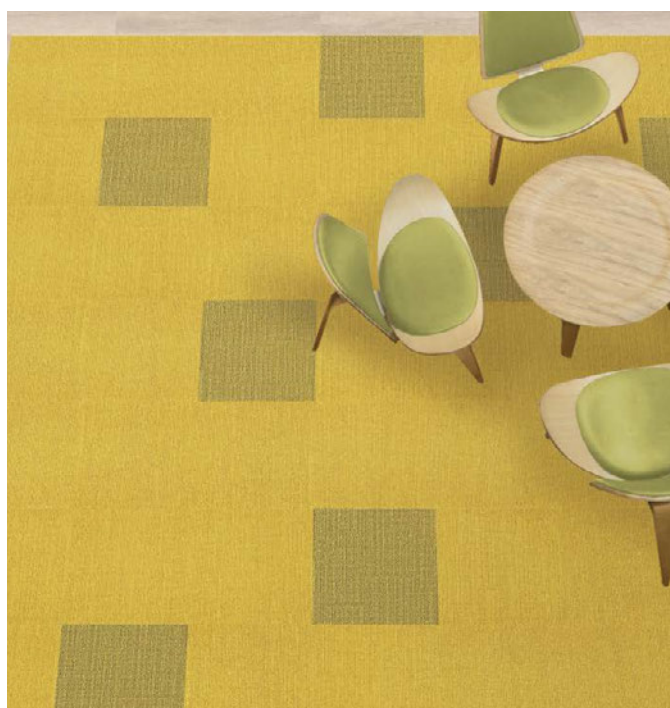
|| GX3019



|| GX3012



|| GX3011



▲ GX3028/GX3062/TTN3121 (LOOSELAY 50 NW-EX - page 324)



▲ GX3008/GX3019/GX3054



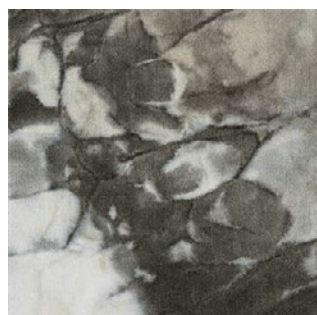
Composition	surface		BCF Nylon 100%		dyeing method of yarn		Piece Dyed
	base fabric		Nonwoven Polyester		backing		PVC and Glass Fiber
Specification	size		500mm×500mm		overall thickness		9.0mm
	pile height		6.0mm (cut pile)				
	gauge	1/10	stitch		13.5	yarn weight (oz/sq.yd)	
Packing	16pcs/box = 4m <sup>2</sup> /box				Dimension	W 530mm × L 515mm × H 150mm	
Net Weight	19.6kg/box						
Performance	Critical Radiant Flux		(ASTM E648)		Class 1 Average CRF 0.45/cm <sup>2</sup> or higher		
	Smoke Density (flaming)		(ASTM E662)		Less than 450		
	Flame-retardant		Fire Defense Law in Japan Authorized No.E2130269				
	Antistatic		Less than 1.0kV (JIS L 1021-16, at 23degrees centigrade, 25%RH)				
	Stain-resistant		◆ Stain Release (NANO CLEAN)				
	Formaldehyde Radiation		F☆☆☆☆ Interior-fabrics Performance Evaluation Conference Certified No.J13-30960				
Way of Installation	<div><div><div>↑</div><div>→</div><div>→</div><div>↑</div></div>Quarter Turn (YSM-300, YSM-400)</div> or <div><div><div>↑</div><div>↑</div><div>↑</div><div>↑</div></div>Monolithic (YSM-300)</div> or <div><div><div>↑</div><div>→</div><div>↓</div><div>←</div><div>←</div><div>↑</div></div>Random (YSM-300)</div>						
Recommended Adhesive from TOLI	TOLI ECO GA Cement TOLI ECO GA Cement EX				(required quantity)	for steel or plastic sub-floor for mortar and wood sub-floor	40 to 60 gram/m <sup>2</sup> 60 to 100 gram/m <sup>2</sup>
Notes on Installation	◆Apply the adhesive on the whole surface of the sub-floor thinly and evenly. After drying, when the adhesive becomes translucent, install the tiles. Be careful not to put the tiles too tightly.						
Others	◆Occasionally the direction of cut-piles are partly broken in part, which looks like color shading. This is one of the characteristics of cut-pile carpets and not a manufacturing defect. ◆The color shading differs on a tile-by-tile basis. In case you do not feel comfortable about the floor after installation, please change the tiles partly so that it will look natural. ◆In YUU design (YSM401 to 403), half of the tiles have a white ray pattern. ◆Please note that the product has the indigenous odor from its materials.						

MADE IN JAPAN



YSM301

揺 YOH



YSM301



YSM302



▲ YSM301



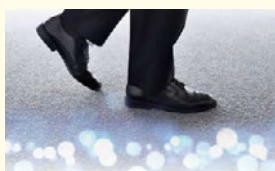
▲ YSM302



## NANO CLEAN

"Nano Clean" provides more excellent stain resistance to soils by adding special Nano finish to the existing stain release by water-repellent finished.

※◆The color codes marked with "Nano Clean" have Nano Clean finish on the surface.



悠 YUU



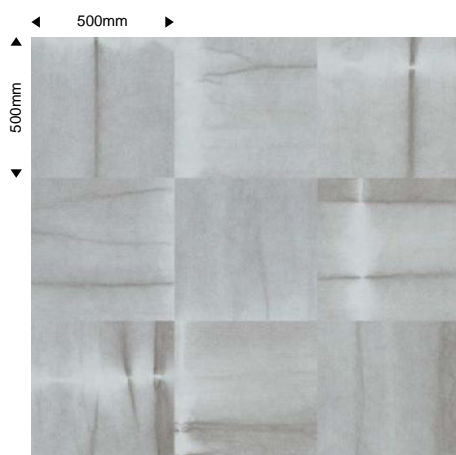
|| YSM401



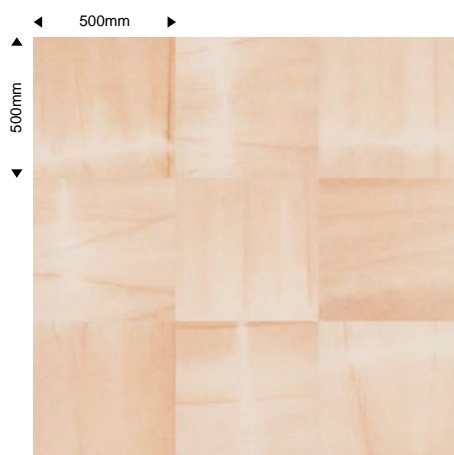
|| YSM402



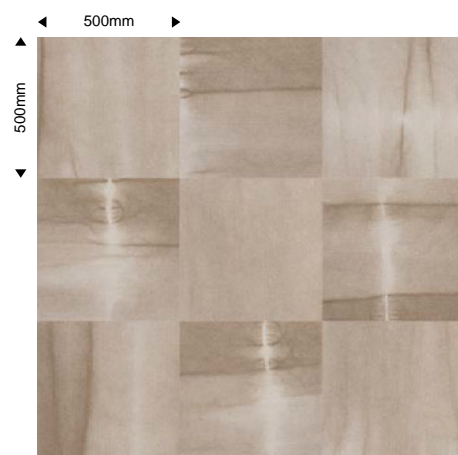
|| YSM403



▲ YSM401



▲ YSM402



▲ YSM403



▲ YSM301



▲ YSM402



# SOKOITARI <GX-7800>

category: carpet tile

Japanese aesthetic feeling "IKI"(swellish) is ultimately expressed in SOKOITARI's bold monochrome patterns. A lot of designs can be created by variety of combinations.  
Cutting edge carpet tiles which won **GOOD DESIGN AWARD 2005**.



Long Life



GOOD  
DESIGN

Composition	surface	BCF Nylon 100%		dyeing method of yarn	Solution Dyed	
	base fabric	Nonwoven Polyester		backing	PVC and Glass Fiber	
Specification	size	500mm×500mm		overall thickness	7.5mm	
	pile height	H 4.5mm to L 2.5mm (textured loop pile)				
	gauge	1/12	stitch	13.0	yarn weight (oz/sq.yd)	20.3
Packing	16pcs/box = 4m <sup>2</sup> /box			Dimension	W 530mm × L 515mm × H 128mm	
Net Weight	21.6kg/box					
Performance	Critical Radiant Flux	(ASTM E648) Class 1 Average CRF 0.45/cm <sup>2</sup> or higher				
	Smoke Density	(ASTM E662) Less than 450				
	Flame-retardant	Fire Defense Law in Japan Authorized No.E0040185				
	Antistatic	Less than 1.0kv (JIS L 1021-16, at 23 degrees centigrade, 25%RH)				
	Stain-resistant	Stain Release				
	Formaldehyde Radiation	F☆☆☆☆ Interior-fabrics Performance Evaluation Conference Certified No.J04-30073				
Way of Installation	<div><div><div>↑</div><div>↑</div><div>↑</div><div>↑</div></div>Monolithic</div> or <div><div><div>↑</div><div>→</div><div>→</div><div>↑</div></div>Quarter Turn</div>					
Recommended Adhesive from TOLI	TOLI ECO GA Cement TOLI ECO GA Cement EX (required quantity)		for steel or plastic sub-floor		40 to 60 gram/m <sup>2</sup>	
			for mortar and wood sub-floor		60 to 100 gram/m <sup>2</sup>	
Notes on Installation	Apply the adhesive on the whole surface of the sub-floor thinly and evenly. After drying, when the adhesive becomes translucent, install the tiles. Be careful not to put the tiles too tightly.					
Others	Please note that the product has the indigenous odor from its materials.					

MADE IN JAPAN



GX7814



(LIGHT BROWN) ■ GX7815



(GRAY) ■ GX7813



(DARK BROWN) ■ GX7816



(DARK GRAY) ■ GX7814



▲ GX7813/GX7814

# SOKOITARI CLASSIC <GX-7900>

category: carpet tile

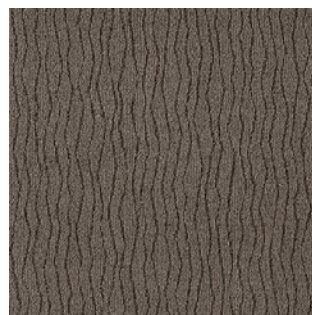
SOKOITARI's sister product with more subtle "IKI" images. Beautiful achromatic colors are available including biscuit-ware brown.



GOOD  
DESIGN

Composition	surface	BCF Nylon 100%		dyeing method of yarn		Solution Dyed	
	base fabric	Nonwoven Polyester		backing		PVC and Glass Fiber (SUSTIVE BACK)	
Specification	size	500mm×500mm		overall thickness		7.5mm	
	pile height	H 5.0mm to L 3.0mm (textured loop pile)					
	gauge	1/12	stitch		13.0	yarn weight (oz/sq.yd)	23.6
Packing	16pcs/box = 4m <sup>2</sup> /box				Dimension	W 530mm × L 515mm × H 124mm	
Net Weight	20.6kg/box						
Performance	Critical Radiant Flux	(ASTM E648)		Class 1 Average CRF 0.45/cm <sup>2</sup> or higher			
	Smoke Density (flaming)	(ASTM E662)		Less than 450			
	Flame-retardant	Fire Defense Law in Japan Authorized No.E0060066					
	Antistatic	Less than 1.0kV (JIS L 1021-16, at 23 degrees centigrade, 25%RH)					
	Stain-resistant	Stain Release					
	Formaldehyde Radiation	F☆☆☆☆ Interior-fabrics Performance Evaluation Conference Certified No.J06-30393					
Way of Installation	<div><div><div>↑</div><div>↑</div><div>↑</div><div>↑</div></div>Monolithic</div> or <div><div><div>↑</div><div>→</div><div>→</div><div>↑</div></div>Quarter Turn</div>						
Recommended Adhesive from TOLI	TOLI ECO GA Cement TOLI ECO GA Cement EX		(required quantity)		for steel or plastic sub-floor for mortar and wood sub-floor		40 to 60 gram/m <sup>2</sup> 60 to 100 gram/m <sup>2</sup>
Notes on Installation	♦Apply the adhesive on the whole surface of the sub-floor thinly and evenly. After drying, when the adhesive becomes translucent, install the tiles. Be careful not to put the tiles too tightly. ♦As SOKOIRARI CLASSIC is a solid-color imaged product, the shadows of joints are sometimes visible, which is not a manufacturing defect. ♦Right after installation, something like color-shading could be seen on the surface. This is caused by lying down of piles which will be recovered over time. ♦Avoid the installation at temperature of 5 degrees centigrade or lower.						
Others	Please note that the product has the indigenous odor from its materials.						

MADE IN JAPAN



(MEDIUM BROWN) || GX7904



(DARK GRAY) || GX7902



(DARK BROWN) || GX7905



(BLACK) || GX7903

▲ GX7904/GX7905



# SOKOITARI INSPIRATION

<GX-8000>

category: carpet tile

SOKOITARI's third generation that features the image of the ground and the following wind. The combination of "wavy base" pattern and "fair wind" pattern can create unprecedentedly elegant floor images.



Long Life



GOOD DESIGN

Composition	surface		BCF Nylon 100%		dyeing method of yarn		Piece Dyed		
	base fabric		Nonwoven Polyester		backing		PVC and Glass Fiber		
Specification	size		500mm×500mm		overall thickness		8.0mm		
	pile height		H 5.0mm to L 3.0mm (textured loop pile)						
	gauge		1/12		stitch		13.5		
						yarn weight (oz/sq.yd)		24.8	
Packing		16pcs/box = 4m <sup>2</sup> /box				Dimension		W 530mm × L 515mm × H 124mm	
Net Weight		21.0kg/box							
Performance	Critical Radiant Flux		(ASTM E648)		Class 1 Average CRF 0.45/cm <sup>2</sup> or higher				
	Smoke Density (flaming)		(ASTM E662)		Less than 450				
	Flame-retardant		Fire Defense Law in Japan Authorized No.E0070165						
	Antistatic		Less than 1.0kV (JIS L 1021-16, at 23 degrees centigrade, 25%RH)						
	Stain-resistant		Stain Release/◆ Stain Release (NANO CLEAN)						
	Formaldehyde Radiation		F☆☆☆☆ Interior-fabrics Performance Evaluation Conference Certified No.J07-30442						
Way of Installation		<div><div><div>↑</div><div>↑</div><div>↑</div><div>↑</div></div>Monolithic</div> or <div><div><div>↑</div><div>→</div><div>→</div><div>↑</div></div>Quarter Turn</div>							
Recommended Adhesive from TOLI		TOLI ECO GA Cement TOLI ECO GA Cement EX		(required quantity)		for steel or plastic sub-floor		40 to 60 gram/m <sup>2</sup>	
						for mortar and wood sub-floor		60 to 100 gram/m <sup>2</sup>	
Notes on Installation		◆Apply the adhesive on the whole surface of the sub-floor thinly and evenly. After drying, when the adhesive becomes translucent, install the tiles. Be careful not to put the tiles too tightly. ◆As SOKOITARI INSPIRATION is a solid-color imaged product, the shadows of joints are sometimes visible, which is not a manufacturing defect. ◆Right after installation, something like color-shading could be seen on the surface. This is caused by lying down of piles which will be recovered over time. ◆WAVY BASE can be coordinated with FAIR WIND.							
Others		Please note that the product has the indigenous odor from its materials.							

MADE IN JAPAN



GX8051



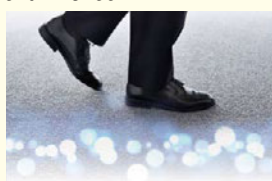
▲ GX8057/GX8059/GX8069



## NANO CLEAN

"Nano Clean" provides more excellent stain resistance to soils by adding special Nano finish to the existing stain release by water-repellent finished.

※◆The color codes marked with "Nano Clean" have Nano Clean finish on the surface.





# SOKOITARI INSPIRATION

## <GX-8000>

category: carpet tile



Long Life



GOOD DESIGN

wavy base

fair wind



(WHITE GRAY) ◆ || GX8051



(WHITE GRAY) ◆ || GX8061



(BEIGE) || GX8057



(BEIGE) || GX8067



(LIGHT BROWN) || GX8055



(LIGHT BROWN) || GX8065



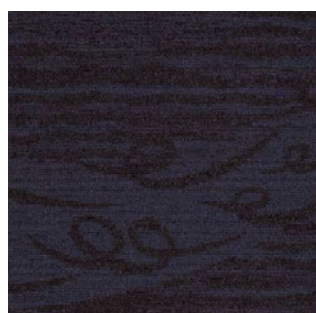
(GREEN) || GX8059



(GREEN) || GX8069



(PURPLE) || GX8053



(PURPLE) || GX8063



▲ GX8051/GX8061/GX8059



▲ GX8051/GX8055/GX8061/GX8065

Carpet  
Tile



# SOKOITARI GRANDAIR II

<GX-81000>

category: carpet tile

Its unique nondirectional design with abundant loop piles can create a high-end atmosphere.  
Cutting edge carpet tiles which won **GOOD DESIGN AWARD 2014**.



Composition	surface		BCF Nylon 100%		dyeing method of yarn		Solution Dyed	
	base fabric		Nonwoven Polyester		backing		PVC and Glass Fiber	
Specification	size		500mm×500mm		overall thickness		10.0mm	
	pile height		H 7.5mm to L 3.0mm (textured loop pile)					
	gauge		1/10	stitch		14.5	yarn weight (oz/sq.yd)	

Packing	16pcs/box = 4m <sup>2</sup> /box		Dimension	W 530mm × L 515mm × H 156mm	
Net Weight	20.0kg/box				
Performance	Critical Radiant Flux	(ASTM E648)	Class 2 Average CRF 0.22/cm <sup>2</sup> or higher		
	Smoke Density	(ASTM E662)	Less than 450		
	Flame-retardant	Fire Defense Law in Japan Authorized No.E2240082			
	Antistatic	Less than 1.0kV (JIS L 1021-16,at 23degrees centigrade,25%RH)			
	Stain-resistant	Stain Release/◆ Stain Release (NANO CLEAN)			
	Formaldehyde Radiation	F☆☆☆☆ Interior-fabrics Performance Evaluation Conference Certified No.J24-31932			
Way of Installation	<div><div><div>↑</div><div>↑</div><div>↑</div><div>↑</div></div>Monolithic</div> or <div><div><div>↑</div><div>→</div><div>→</div><div>↑</div></div>Quarter Turn</div>				
Recommended Adhesive from TOLI	TOLI ECO GA Cement		(required quantity)	for steel or plastic sub-floor	40 to 60 gram/m <sup>2</sup>
	TOLI ECO GA Cement EX			for mortar and wood sub-floor	60 to 100 gram/m <sup>2</sup>
Notes on Installation	◆Apply the adhesive on the whole surface of the sub-floor thinly and evenly. After drying, when the adhesive becomes translucent, install the tiles. Be careful not to put the tiles too tightly. ◆Due to its 3-dimensional texture, the level difference might be caused on the joints of tiles. This is part of the pattern and not a manufacturing defect. ◆Right after installation, something like color-shading could be seen on the surface. This is caused by lying down of piles which will be recovered over time. ◆WAVY BASE (GX81051 to GX81055) can be coordinated with YUKI PATTERN (GX81011 to GX81015).				
Others	Please note that the product has the indigenous odor from its materials.				

MADE IN JAPAN



## NANO CLEAN

"Nano Clean" provides more excellent stain resistance to soils by adding special Nano finish to the existing stain release by water-repellent finished.

※◆The color codes marked with "Nano Clean" have Nano Clean finish on the surface.



▲ GX81011/GX81051



# SOKOITARI GRANDAIR II

<GX-81000>

category: carpet tile



Long Life



GOOD DESIGN

wavy base

YUKI pattern



(SAND BEIGE) || GX81051



(SAND BEIGE) || GX81011



(NATURAL GRAY) || GX81052



(NATURAL GRAY) || GX81012



(CHARCOAL GRAY) || GX81053



(CHARCOAL GRAY) || GX81013



▲ GX81012/GX81052



(OAK BROWN) || GX81054



(OAK BROWN) || GX81014



(PEARL WHITE) ◆ || GX81016



(ROUGE RED) || GX81017



(BARK BROWN) || GX81055



(BARK BROWN) || GX81015



(INDIGO BLUE) || GX81018

Carpet  
Tile



# SOKOITARI SOUNDSCAPE

## <GX-8200>

category: carpet tile

Stylish flowing wave images are created by fine gradation and 3-dimensional carving.



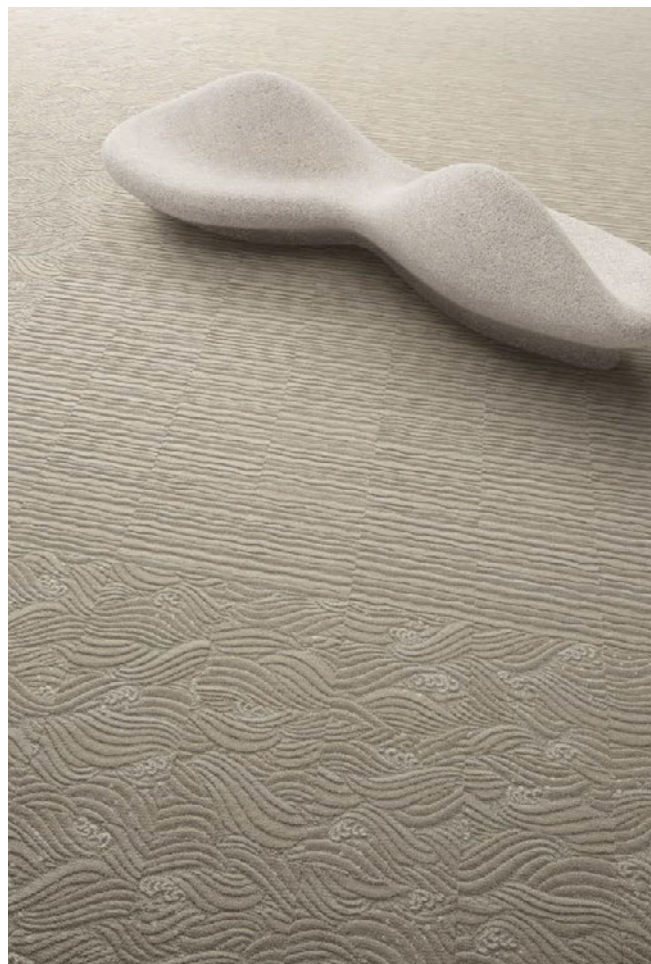
GOOD  
DESIGN

Composition	surface		BCF Nylon 100%		dyeing method of yarn		Solution Dyed	
	base fabric		Nonwoven Polyester		backing		PVC and Glass Fiber	
Specification	size		500mm×500mm		overall thickness		10.5mm	
	pile height		H 8.0mm to L 3.0mm (textured loop pile)					
	gauge 1/10		stitch	GX8211 to GX8218 GX8251 to GX8258		17.0 17.5	yarn weight (oz/sq.yd)	26.2
Packing	16pcs/box = 4m <sup>2</sup> /box				Dimension		W 530mm × L 515mm × H 172mm	
Net Weight	21.2kg/box							
Performance	Critical Radiant Flux		(ASTM E648)		Class 2 Average CRF 0.22/cm <sup>2</sup> or higher			
	Smoke Density		(ASTM E662)		Less than 450			
	Flame-retardant		Fire Defense Law in Japan Authorized No.E2230223					
	Antistatic		Less than 1.0kV (JIS L 1021-16,at 23degrees centigrade,25%RH)					
	Stain-resistant		Stain Release					
	Formaldehyde Radiation		F☆☆☆☆ Interior-fabrics Performance Evaluation Conference Certified No.J23-31845					
Way of Installation	<div><div><div>↑</div><div>↑</div><div>↑</div><div>↑</div></div>Monolithic</div> or <div><div><div>↑</div><div>→</div><div>→</div><div>↑</div></div>Quarter Turn</div>							
Recommended Adhesive from TOLI	TOLI ECO GA Cement TOLI ECO GA Cement EX		(required quantity)		for steel or plastic sub-floor for mortar and wood sub-floor		40 to 60 gram/m <sup>2</sup> 60 to 100 gram/m <sup>2</sup>	
Notes on Installation	♦Apply the adhesive on the whole surface of the sub-floor thinly and evenly. After drying, when the adhesive becomes translucent, install the tiles. Be careful not to put the tiles too tightly. ♦Due to its 3-dimensional texture, the level difference might be caused on the joints of tiles. This is part of the pattern and not a manufacturing defect. ♦Right after installation, something like color-shading could be seen on the surface. This is caused by lying down of piles which will be recovered over time. ♦WAVY BASE (GX8211 to GX8218) can be coordinated with SEIHA-MON (GX8251 to GX8258).							
Others	Please note that the product has the indigenous odor from its materials.							

MADE IN JAPAN



GX8215



▲ GX8215/GX8255

# SOKOITARI SOUNDSCAPE

<GX-8200>

category: carpet tile



Long Life



GOOD DESIGN

Seiha-mon

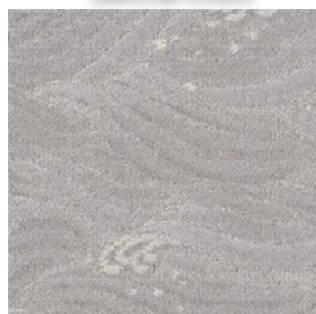
wavy base

Seiha-mon

wavy base



(SHELL WHITE) || GX8211



(SHELL WHITE) || GX8251



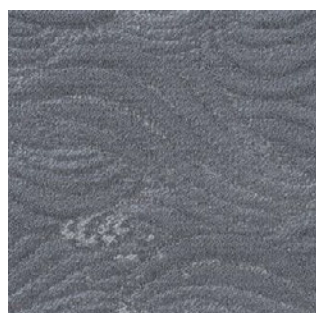
(CHAMPAGNE BEIGE) || GX8215



(CHAMPAGNE BEIGE) || GX8255



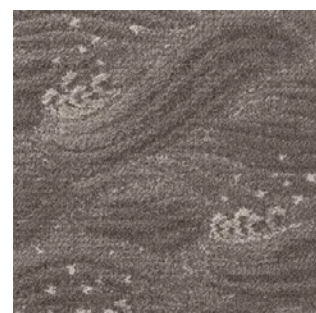
(SILVER GRAY) || GX8212



(SILVER GRAY) || GX8252



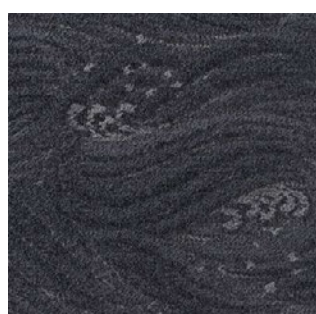
(HAZEL BROWN) || GX8216



(HAZEL BROWN) || GX8256



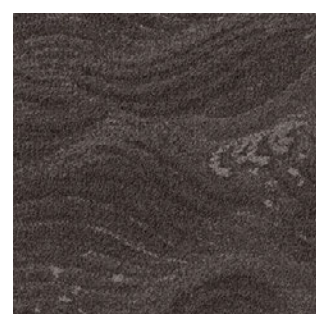
(CHARCOAL GRAY) || GX8213



(CHARCOAL GRAY) || GX8253



(BISTER BROWN) || GX8217



(BISTER BROWN) || GX8257



(EBONY BLACK) || GX8214



(EBONY BLACK) || GX8254



(AMBER ORANGE) || GX8218



(AMBER ORANGE) || GX8258

Carpet  
Tile



# BREATHFLORA <GX-6250L>

category: carpet tile

Scenic beauty of flowers in bloom are expressed in bright and elegant colors. Dynamic pattern in 1m x 1m size will create a classy and gorgeous floor image.



Long Life

Composition	surface		BCF Nylon 100%		dyeing method of yarn		Solution Dyed	
	base fabric		Nonwoven Polyester		backing		PVC and Glass Fiber	
Specification	size		1000mm×1000mm		overall thickness		10.5mm	
	pile height		H 8.0mm to L 3.0mm (textured loop pile)					
	gauge		1/10	stitch		20.0	yarn weight (oz/sq.yd) 30.1	
Packing	4pcs/box = 4m <sup>2</sup> /box				Dimension		W 1013mm × L 1013mm × H 46mm	
Net Weight	23.5kg/box							
Performance	Critical Radiant Flux		(ASTM E648)		Class 2 Average CRF 0.22/cm <sup>2</sup> or higher			
	Smoke Density		(ASTM E662)		Less than 450			
	Flame-retardant		Fire Defense Law in Japan Authorized No.E2240080					
	Antistatic		Less than 1.0kV (JIS L 1021-16, at 23 degrees centigrade, 25%RH)					
	Stain-resistant		Stain Release					
	Formaldehyde Radiation		F☆☆☆☆ Interior-fabrics Performance Evaluation Conference Certified No.J24-31926					
Way of Installation	<div><div><div>↑</div><div>↑</div><div>↑</div><div>↑</div></div>Monolithic</div> or <div><div><div>↑</div><div>↑</div><div>→</div><div>→</div></div>Quarter Turn</div>							
Recommended Adhesive from TOLI	TOLI ECO GA Cement		(required quantity)		for steel or plastic sub-floor		40 to 60 gram/m <sup>2</sup>	
	TOLI ECO GA Cement EX				for mortar and wood sub-floor		60 to 100 gram/m <sup>2</sup>	
Notes on Installation	♦Apply the adhesive on the whole surface of the sub-floor thinly and evenly. After drying, when the adhesive becomes translucent, install the tiles. Be careful not to put the tiles too tightly. ♦Due to its texture, the level difference might be caused on the joints of tiles.							
Others	Please note that the product has the indigenous odor from its materials.							

MADE IN JAPAN



GX6252L



GX6251L



GX6253L



▲ GX6254L



GX6252L



GX6254L



# BREATHFLORA <GX-6250L>

category: carpet tile



Carpet  
Tile



▲ GX6251L



▲ GX6252L/TTN3205 (LOOSELAY 50 NW-EX - page 321)



# GRAND FLOW <GX-6150L>

category: carpet tile

Dynamic pattern in 1000mm x 1000mm size to create a feeling of spaciousness. Magnificent flowing image is well described by marbling method.



Long Life



Composition	surface		BCF Nylon 100%		dyeing method of yarn		Solution Dyed	
	base fabric		Nonwoven Polyester		backing		PVC and Glass Fiber	
Specification	size		1000mm×1000mm		overall thickness		9.5mm	
	pile height		H 7.5mm to L 3.0mm (textured loop pile)					
	gauge		1/10	stitch		20.0	yarn weight (oz/sq.yd) 25.7	
Packing	4pcs/box = 4m <sup>2</sup> /box				Dimension		W 1013mm × L 1013mm × H 40mm	
Net Weight	22.0kg /box							
Performance	Critical Radiant Flux		(ASTM E648)		Class 2 Average CRF 0.22/cm <sup>2</sup> or higher			
	Smoke Density		(ASTM E662)		Less than 450			
	Flame-retardant		Fire Defense Law in Japan Authorized No.E2210057					
	Antistatic		Less than 1.0kV (JIS L 1021-16, at 23 degrees centigrade, 25%RH)					
	Stain-resistant		◆ Stain Release (NANO CLEAN)					
	Formaldehyde Radiation		F☆☆☆☆ Interior-fabrics Performance Evaluation Conference Certified No.J21-31636					
Way of Installation	<div><div><div>↑</div><div>↑</div><div>↑</div><div>↑</div></div><div>Monolithic</div><div>or</div><div><div><div>↑</div><div>→</div><div>→</div><div>↑</div></div><div>Quarter Turn</div></div></div>							
Recommended Adhesive from TOLI	TOLI ECO GA Cement		(required quantity)		for steel or plastic sub-floor		40 to 60 gram/m <sup>2</sup>	
	TOLI ECO GA Cement EX				for mortar and wood sub-floor		60 to 100 gram/m <sup>2</sup>	
Notes on Installation	◆Apply the adhesive on the whole surface of the sub-floor thinly and evenly. After drying, when the adhesive becomes translucent, install the tiles. Be careful not to put the tiles too tightly. ◆Due to its texture, the level difference might be caused on the joints of tiles.							
Others	Please note that the product has the indigenous odor from its materials.							

MADE IN JAPAN



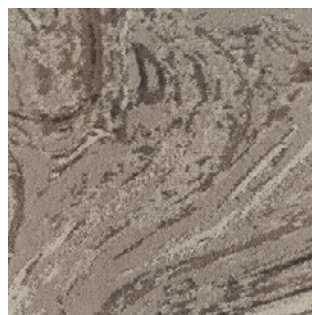
GX6152L



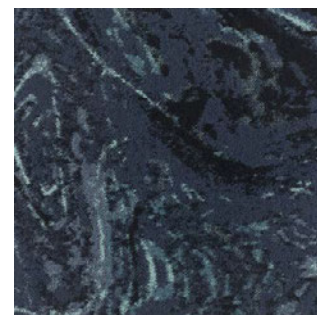
|| GX6151L ◆



|| GX6153L ◆



|| GX6152L ◆



|| GX6154L ◆



## NANO CLEAN

"Nano Clean" provides more excellent stain resistance to soils by adding special Nano finish to the existing stain release by water-repellent finished.

※◆The color codes marked with "Nano Clean" have Nano Clean finish on the surface.





# GRAND FLOW <GX-6150L>

category: carpet tile



Carpet  
Tile



▲ GX6151L



▲ GX6152L



▲ GX6154L/TTN3902 (LOOSELAY 50 NW-EX - page 326)



# SRONE <GX-9050V>

category: carpet tile



SRONE's dynamic stone-look pattern will create a daring but sophisticated feeling in your space.



Long Life



GOOD  
DESIGN

Composition	surface BCF Nylon 100%		dyeing method of yarn Solution Dyed	
	base fabric Nonwoven Polyester		backing PVC and Glass Fiber	
Specification	size 250mm×1000mm		overall thickness 8.0mm	
	pile height H 6.0mm to L 3.0mm (textured loop pile)			
	gauge 1/12		stitch 11.0 yarn weight (oz/sq.yd) 18.9	
Packing	12pcs/box = 3m <sup>2</sup> /box		Dimension	W 262mm × L 1025mm × H 100mm
Net Weight	16.1kg /box			
Performance	Critical Radiant Flux	(ASTM E648)	Class 1 Average CRF 0.45/cm <sup>2</sup> or higher	
	Smoke Density	(ASTM E662)	Less than 450	
	Flame-retardant	Fire Defense Law in Japan Authorized No.E2150034		
	Antistatic	Less than 1.0kV (JIS L 1021-16, at 23 degrees centigrade, 25%RH)		
	Stain-resistant	Stain Release		
	Formaldehyde Radiation	F☆☆☆☆ Interior-fabrics Performance Evaluation Conference Certified No.J15-31030		
Way of Installation	<div> Ashlar</div> or <div> Monolithic</div>			
Recommended Adhesive from TOLI	TOLI ECO GA Cement TOLI ECO GA Cement EX		(required quantity)	
			for steel or plastic sub-floor 40 to 60 gram/m <sup>2</sup> for mortar and wood sub-floor 60 to 100 gram/m <sup>2</sup>	
Notes on Installation	♦Apply the adhesive on the whole surface of the sub-floor thinly and evenly. After drying, when the adhesive becomes translucent, install the tiles. Be careful not to put the tiles too tightly. ♦When you install SRONE on the free access floor, each tile should be laid to stride over the joint of free access floor panels in the middle. (The joint of SRONE should not be matched to that of free access floor panels.)			
Others	Please note that the product has the indigenous odor from its materials.			

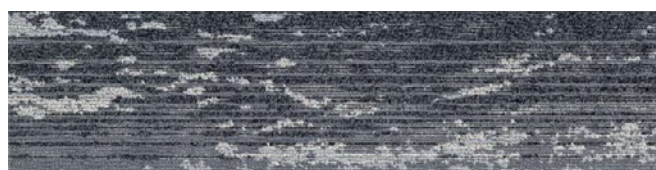
MADE IN JAPAN



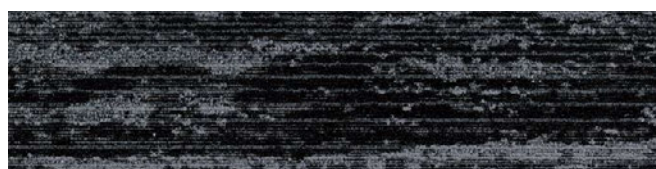
GX9052V



GX9051V



GX9052V



GX9053V



▲ GX9051V/GX9052V/GX9053V



GX9055V



GX9056V



# DIFFEBRILLER II <GX-96500V>

category: carpet tile



Classy pattern inspired by fine sparkles on the water surface. Sheer persistence to yarn texture and chromogenic effect will provide a premium feel.



Long Life



GOOD  
DESIGN

Composition	surface		BCF Nylon 100%		dyeing method of yarn		Solution Dyed	
	base fabric		Nonwoven Polyester		backing		PVC and Glass Fiber	
Specification	size		250mm×1000mm		overall thickness		8.0mm	
	pile height		H 5.0mm to L 3.0mm (textured loop pile: tip sheared)					
	gauge		1/10	stitch		11.0	yarn weight (oz/sq.yd) 21.2	
Packing	12pcs/box = 3m <sup>2</sup> /box				Dimension		W 262mm × L 1025mm × H 100mm	
Net Weight	16.0kg/box							
Performance	Critical Radiant Flux		(ASTM E648)		Class 2 Average CRF 0.22/cm <sup>2</sup> or higher			
	Smoke Density		(ASTM E662)		Less than 450			
	Flame-retardant		Fire Defense Law in Japan Authorized No.E2240083					
	Antistatic		Less than 1.0kV (JIS L 1021-16, at 23 degrees centigrade, 25%RH)					
	Stain-resistant		Stain Release					
	Formaldehyde Radiation		F☆☆☆☆ Interior-fabrics Performance Evaluation Conference Certified No.J24-31933					
Way of Installation	<div> Ashlar</div> or <div> Monolithic</div>							
Recommended Adhesive from TOLI	TOLI ECO GA Cement		(required quantity)		for steel or plastic sub-floor		40 to 60 gram/m <sup>2</sup>	
	TOLI ECO GA Cement EX				for mortar and wood sub-floor		60 to 100 gram/m <sup>2</sup>	
Notes on Installation	♦Apply the adhesive on the whole surface of the sub-floor thinly and evenly. After drying, when the adhesive becomes translucent, install the tiles. Be careful not to put the tiles too tightly. ♦When you install DIFFEBRILLER II on the free access floor, each tile should be laid to stride over the joint of free access floor panels in the middle. (The joint of DIFFEBRILLER II should not be matched to that of free access floor panels.) ♦Occasionally the direction of tip sheared piles are partly broken in part, which looks like color shading. This is one of the characteristics of tip sheared carpets and not a manufacturing defect.							
Others	Please note that the product has the indigenous odor from its materials.							

MADE IN JAPAN



▲ GX96501V/GX96505V



GX96503V



■ GX96501V



■ GX96503V



■ GX96504V



■ GX96502V



■ GX96505V



# ROCK GARDEN <GX-9250V>

category: carpet tile



Series of 3-dimensional random stone images will inspire the cobblestone lane. Broad and dynamic floor designs can be created.



Long Life



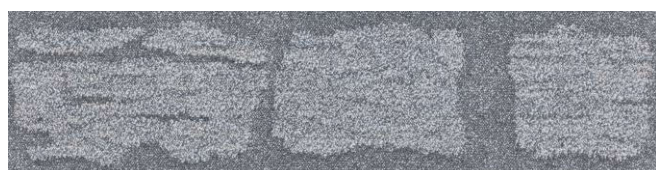
GOOD  
DESIGN

Composition	surface	BCF Nylon 100%		dyeing method of yarn		Solution Dyed	
	base fabric	Nonwoven Polyester		backing		PVC and Glass Fiber	
Specification	size	250mm×1000mm		overall thickness		9.3mm	
	pile height	H 8.0mm to L 3.0mm (textured loop pile)					
	gauge	1/10	stitch	14.0	yarn weight (oz/sq.yd)	20.1	
Packing	12pcs/box = 3m <sup>2</sup> /box			Dimension	W 262mm × L 1025mm × H 116mm		
Net Weight	17.0kg /box						
Performance	Critical Radiant Flux	(ASTM E648)	Class 2 Average CRF 0.22/cm <sup>2</sup> or higher				
	Smoke Density	(ASTM E662)	Less than 450				
	Flame-retardant	Fire Defense Law in Japan Authorized No.E2180254					
	Antistatic	Less than 1.0kV (JIS L 1021-16, at 23 degrees centigrade, 25%RH)					
	Stain-resistant	Stain Release					
	Formaldehyde Radiation	F☆☆☆☆ Interior-fabrics Performance Evaluation Conference Certified No.J18-21150					
Way of Installation	 Ashlar      or  Monolithic						
Recommended Adhesive from TOLI	TOLI ECO GA Cement	(required quantity)	for steel or plastic sub-floor		40 to 60 gram/m <sup>2</sup>		
	TOLI ECO GA Cement EX		for mortar and wood sub-floor		60 to 100 gram/m <sup>2</sup>		
Notes on Installation	◆Apply the adhesive on the whole surface of the sub-floor thinly and evenly. After drying, when the adhesive becomes translucent, install the tiles. Be careful not to put the tiles too tightly. ◆When you install ROCK GARDEN on the free access floor, each tile should be laid to stride over the joint of free access floor panels in the middle. (The joint of ROCK GARDEN should not be matched to that of free access floor panels.)						
Others	Please note that the product has the indigenous odor from its materials.						

MADE IN JAPAN



GX9251V



GX9251V



GX9252V



▲ GX4212 (PRARIE · page 135)/GX9251V/GX9252V



# RESONANCE <GX-9700V>

category: carpet tile

Authentic wood-plank image is well converted into carpet tile form.



**GOOD  
DESIGN**

Composition	surface		BCF Nylon 100%		dyeing method of yarn		Solution Dyed	
	base fabric		Nonwoven Polyester		backing		PVC and Glass Fiber	
Specification	size		250mm×1000mm		overall thickness		7.5mm	
	pile height		H 4.0mm to L 3.0mm (textured loop pile)					
	gauge		1/12	stitch		11.5	yarn weight (oz/sq.yd) 21.2	
Packing	12pcs/box = 3m <sup>2</sup> /box				Dimension		W 262mm × L 1025mm × H 94mm	
Net Weight	16.5kg/box							
Performance	Critical Radiant Flux		(ASTM E648)		Class 1 Average CRF 0.45/cm <sup>2</sup> or higher			
	Smoke Density (flaming)		(ASTM E662)		Less than 450			
	Flame-retardant		Fire Defense Law in Japan Authorized No.E2120040					
	Antistatic		Less than 1.0kV (JIS L 1021-16, at 23 degrees centigrade, 25%RH)					
	Stain-resistant		Stain Release					
	Formaldehyde Radiation		F☆☆☆☆ Interior-fabrics Performance Evaluation Conference Certified No.J12-30822					
Way of Installation	<div><div> Monolithic</div> or <div><div> Ashlar</div></div></div>							
Recommended Adhesive from TOLI	TOLI ECO GA Cement		(required quantity)		for steel or plastic sub-floor		40 to 60 gram/m <sup>2</sup>	
	TOLI ECO GA Cement EX				for mortar and wood sub-floor		60 to 100 gram/m <sup>2</sup>	
Notes on Installation	◆Apply the adhesive on the whole surface of the sub-floor thinly and evenly. After drying, when the adhesive becomes translucent, install the tiles. Be careful not to put the tiles too tightly. ◆When you install RESONANCE on the free access floor, each tile should be laid to stride over the joint of free access floor panels in the middle. (The joint of RESONANCE should not be matched to that of free access floor panels.)							
Others	Please note that the product has the indigenous odor from its materials.							

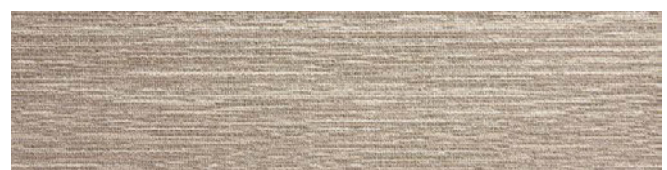
MADE IN JAPAN



▲ GX9701V



GX9702V



|| GX9701V



|| GX9702V





# VENICHE <GX-9150V>

category: carpet tile

Multi-colored rustic feeling of painted woods is very well expressed in VENICHE.



GOOD  
DESIGN

Composition	surface BCF Nylon 100%		dyeing method of yarn Solution Dyed	
	base fabric Nonwoven Polyester		backing PVC and Glass Fiber	
Specification	size 250mm×1000mm		overall thickness 8.3mm	
	pile height H 5.5mm to L 3.0mm (textured loop pile)			
	gauge 1/10		stitch 11.0 yarn weight (oz/sq.yd) 20.1	
Packing	12pcs/box = 3m <sup>2</sup> /box		Dimension	W 262mm × L 1025mm × H 103mm
Net Weight	16.0kg/box			
Performance	Critical Radiant Flux	(ASTM E648)	Class 1 Average CRF 0.45/cm <sup>2</sup> or higher	
	Smoke Density	(ASTM E662)	Less than 450	
	Flame-retardant	Fire Defense Law in Japan Authorized No.E2150035		
	Antistatic	Less than 1.0kV (JIS L 1021-16, at 23 degrees centigrade, 25%RH)		
	Stain-resistant	Stain Release		
	Formaldehyde Radiation	F <sup>IV</sup> ☆☆☆☆ Interior-fabrics Performance Evaluation Conference Certified No.J15-31031		
Way of Installation	<div><div> Ashlar</div> or <div><div> Monolithic</div></div></div>			
Recommended Adhesive from TOLI	TOLI ECO GA Cement		for steel or plastic sub-floor 40 to 60 gram/m <sup>2</sup>	
	TOLI ECO GA Cement EX (required quantity)		for mortar and wood sub-floor 60 to 100 gram/m <sup>2</sup>	
Notes on Installation	♦Apply the adhesive on the whole surface of the sub-floor thinly and evenly. After drying, when the adhesive becomes translucent, install the tiles. Be careful not to put the tiles too tightly. ♦When you install VENICHE on the free access floor, each tile should be laid to stride over the joint of free access floor panels in the middle. (The joint of VENICHE should not be matched to that of free access floor panels.)			
Others	Please note that the product has the indigenous odor from its materials.			

MADE IN JAPAN



GX9153V



GX9151V



GX9152V



GX9153V



▲ GX9151V/GX9152V





# MOROCA LINE <GX-4550V>

category: carpet tile

Traditional Moroccan woven fabric is well modernized. It makes your space relaxing like a living room.



Composition	surface		BCF Nylon 100%		dyeing method of yarn		Solution Dyed	
	base fabric		Nonwoven Polyester		backing		PVC and Glass Fiber	
Specification	size		250mm×1000mm		overall thickness		9.3mm	
	pile height		H 6.0mm to L 3.0mm (textured loop pile)					
	gauge		1/10	stitch		20.0	yarn weight (oz/sq.yd)	
Packing	12pcs/box = 3m <sup>2</sup> /box				Dimension		W 262mm × L 1025mm × H 116mm	
Net Weight	16.5kg/box							
Performance	Critical Radiant Flux		(ASTM E648)		Class 2 Average CRF 0.22/cm <sup>2</sup> or higher			
	Smoke Density		(ASTM E662)		Less than 450			
	Flame-retardant		Fire Defense Law in Japan Authorized No.E2190078					
	Antistatic		Less than 1.0kV (JIS L 1021-16, at 23 degrees centigrade, 25%RH)					
	Stain-resistant		◆ Stain Release (NANO CLEAN)					
	Formaldehyde Radiation		F☆☆☆☆ Interior-fabrics Performance Evaluation Conference Certified No.J19-31525					
Way of Installation	<div><div></div><div>Ashlar</div><div>or</div><div></div><div>Monolithic</div></div>							
Recommended Adhesive from TOLI	TOLI ECO GA Cement		(required quantity)		for steel or plastic sub-floor		40 to 60 gram/m <sup>2</sup>	
	TOLI ECO GA Cement EX				for mortar and wood sub-floor		60 to 100 gram/m <sup>2</sup>	
Notes on Installation	◆Apply the adhesive on the whole surface of the sub-floor thinly and evenly. After drying, when the adhesive becomes translucent, install the tiles. Be careful not to put the tiles too tightly. ◆When you install MOROCA LINE on the free access floor, each tile should be laid to stride over the joint of free access floor panels in the middle. (The joint of MOROCA LINE should not be matched to that of free access floor panels.)							
Others	Please note that the product has the indigenous odor from its materials.							

MADE IN JAPAN



GX4551V



GX4553V



GX4552V



## NANO CLEAN

"Nano Clean" provides more excellent stain resistance to soils by adding special Nano finish to the existing stain release by water-repellent finished.

※◆The color codes marked with "Nano Clean" have Nano Clean finish on the surface.

▲ GX4551V/GX4552V/GX4553V





# LINK SPACE <GX-9950V>

category: carpet tile

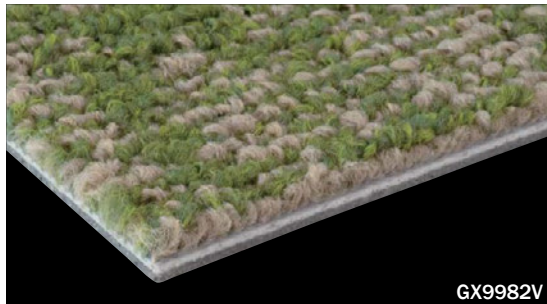
Japanese KASURI image will nicely fit in your space. Combination of 3 color codes can create a moderate gradation on the floor.



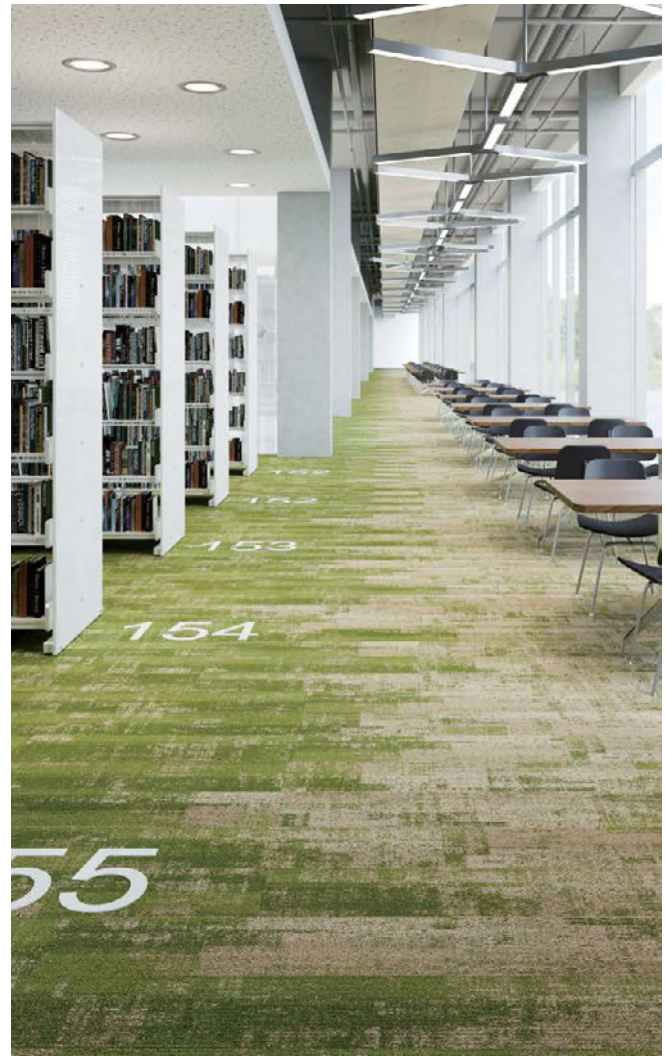
**GOOD  
DESIGN**

Composition	surface		BCF Nylon 100%		dyeing method of yarn		Solution Dyed	
	base fabric		Nonwoven Polyester		backing		PVC and Glass Fiber	
Specification	size		250mm×1000mm		overall thickness		8.0mm	
	pile height		H 5.5mm to L 3.0mm (textured loop pile)					
	gauge		1/12	stitch		11.5	yarn weight (oz/sq.yd) 19.0	
Packing	12pcs/box = 3m <sup>2</sup> /box				Dimension		W 262mm × L 1025mm × H 100mm	
Net Weight	15.7kg /box							
Performance	Critical Radiant Flux		(ASTM E648)		Class 2 Average CRF 0.22/cm <sup>2</sup> or higher			
	Smoke Density		(ASTM E662)		Less than 450			
	Flame-retardant		Fire Defense Law in Japan Authorized No.E2210159					
	Antistatic		Less than 1.0kV (JIS L 1021-16, at 23 degrees centigrade, 25%RH)					
	Stain-resistant		Stain Release					
	Formaldehyde Radiation		F☆☆☆☆ Interior-fabrics Performance Evaluation Conference Certified No.J21-31641					
Way of Installation	<div><div></div> Monolithic</div> or <div><div></div> Ashlar</div>							
Recommended Adhesive from TOLI	TOLI ECO GA Cement		(required quantity)		for steel or plastic sub-floor		40 to 60 gram/m <sup>2</sup>	
	TOLI ECO GA Cement EX				for mortar and wood sub-floor		60 to 100 gram/m <sup>2</sup>	
Notes on Installation	♦Apply the adhesive on the whole surface of the sub-floor thinly and evenly. After drying, when the adhesive becomes translucent, install the tiles. Be careful not to put the tiles too tightly. ♦When you install LINK SPACE on the free access floor, each tile should be laid to stride over the joint of free access floor panels in the middle. (The joint of LINK SPACE should not be matched to that of free access floor panels.)							
Others	Please note that the product has the indigenous odor from its materials.							

MADE IN JAPAN



GX9982V



▲ GX9981V/GX9982V/GX9983V



# LINK SPACE <GX-9950V>

category: carpet tile



Long Life



GOOD  
DESIGN



|| GX9981V



|| GX9982V



|| GX9983V



|| GX9961V



|| GX9962V



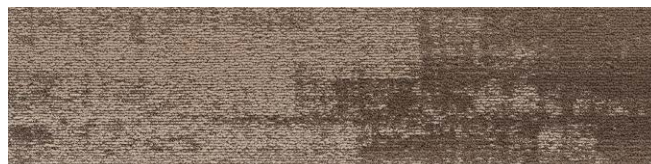
|| GX9963V



▲ GX9982V



|| GX9971V



|| GX9972V



|| GX9973V



▲ GX9971V/GX9972V/GX9973V

Carpet  
Tile



# WITH TIME <GX-3350>

category: carpet tile

Rich texture and beautiful color mixture will convey the feeling of aged natural beauty.



Long Life

Composition	surface		BCF Nylon 100%		dyeing method of yarn		Solution Dyed	
	base fabric		Nonwoven Polyester		backing		PVC and Glass Fiber	
Specification	size		500mm×500mm		overall thickness		9.5mm	
	pile height		H 7.0mm to L 3.0mm (textured loop pile)					
	gauge		1/10	stitch		16.5	yarn weight (oz/sq.yd) 26.5	
Packing	16pcs/box = 4m <sup>2</sup> /box				Dimension		W 530mm × L 515mm × H 156mm	
Net Weight	21.9kg/box							
Performance	Critical Radiant Flux		(ASTM E648)		Class 2 Average CRF 0.22/cm <sup>2</sup> or higher			
	Smoke Density		(ASTM E662)		Less than 450			
	Flame-retardant		Fire Defense Law in Japan Authorized No.E2210061					
	Antistatic		Less than 1.0kV (JIS L 1021-16, at 23 degrees centigrade, 25%RH)					
	Stain-resistant		Stain Release					
	Formaldehyde Radiation		F☆☆☆☆ Interior-fabrics Performance Evaluation Conference Certified No.J21-31639					
Way of Installation	<div><div><div>↑</div><div>↑</div><div>↑</div><div>↑</div></div>Monolithic</div> or <div><div><div>↑</div><div>→</div><div>→</div><div>↑</div></div>Quarter Turn</div>							
Recommended Adhesive from TOLI	TOLI ECO GA Cement		(required quantity)		for steel or plastic sub-floor		40 to 60 gram/m <sup>2</sup>	
	TOLI ECO GA Cement EX				for mortar and wood sub-floor		60 to 100 gram/m <sup>2</sup>	
Notes on Installation	◆Apply the adhesive on the whole surface of the sub-floor thinly and evenly. After drying, when the adhesive becomes translucent, install the tiles. Be careful not to put the tiles too tightly. ◆Due to its texture, the level difference might be caused on the joints of tiles.							
Others	Please note that the product has the indigenous odor from its materials.							

MADE IN JAPAN



GX3352



GX3351



GX3352



GX3353



▲ GX3352/TTN3206 (LOOSELAY 50 NW-EX - page 321)



# MT-3350

(made-to-order product)

category: carpet tile

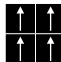
Deep shading image is created by embossing on the top of WITH TIME <GX-3350>.



Long Life



GOOD DESIGN

Composition	surface		BCF Nylon 100%		dyeing method of yarn		Solution Dyed	
	base fabric		Nonwoven Polyester		backing		PVC and Glass Fiber	
Specification	size		500mm×500mm		overall thickness		9.5mm	
	pile height		H 7.0mm to L 3.0mm (textured loop pile) with special embossing					
	gauge		1/10	stitch		16.5	yarn weight (oz/sq.yd) 26.5	
Packing	16pcs/box = 4m <sup>2</sup> /box				Dimension		W 530mm × L 515mm × H 159mm	
Net Weight	21.4kg/box							
Performance	Critical Radiant Flux		(ASTM E648)		Class 2			Average CRF 0.22/cm <sup>2</sup> or higher
	Smoke Density (Flaming)		(ASTM E662)		Less than			450
	Flame-retardant		Fire Defense Law in Japan Authorized No.E2210060					
	Antistatic		Less than 1.0kV (JIS L 1021-16,at 23degrees centigrade,25%RH)					
	Stain-resistant		Stain Release					
	Formaldehyde Radiation		F☆☆☆☆ Interior-fabrics Performance Evaluation Conference Certified No.J21-31640					
Way of Installation							Monolithic	
Recommended Adhesive from TOLI	TOLI ECO GA Cement		(required quantity)		for steel or plastic sub-floor		40 to 60 gram/m <sup>2</sup>	
	TOLI ECO GA Cement EX				for mortar and wood sub-floor		60 to 100 gram/m <sup>2</sup>	
Notes on Installation	◆Apply the adhesive on the whole surface of the sub-floor thinly and evenly. After drying, when the adhesive becomes translucent, install the tiles. Be careful not to put the tiles too tightly. ◆MT-3350 is using the same surface material as WITH TIME (page 124), so the coordination with WITH TIME is also workable. ◆Slight cracking may be found on the embossed part, which does not affect the quality of the product. ◆Melted parts on the surface piles have a hard texture. Please do not step without your shoes on.							
Others	Please note that the product has the indigenous odor from its materials.							

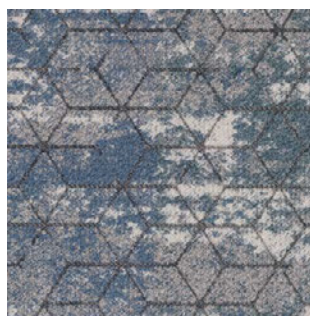
MADE IN JAPAN



▲ MT3361F/GX3351 (WITH TIME · page 124)



MT3361F



MT3361F



MT3362F



MT3371F



MT3372F



# FOGGYROCK <GX-4800>

category: carpet tile

Natural-look design inspired by the rock surface with unique color shading. Various floor images can be created not only by selecting one single color but by the combination of multiple colors.



Composition	surface		BCF Nylon 100%		dyeing method of yarn		Solution Dyed	
	base fabric		Nonwoven Polyester		backing		PVC and Glass Fiber	
Specification	size		500mm×500mm		overall thickness		10.0mm	
	pile height		H 7.0mm to L 3.0mm (textured loop pile)					
	gauge		1/10	stitch		15.0	yarn weight (oz/sq.yd)	22.1
Packing	16pcs/box = 4m²/box				Dimension		W 530mm × L 515mm × H 164mm	
Net Weight	20.0kg/box							
Performance	Critical Radiant Flux		(ASTM E648)		Class 2 Average CRF 0.22/cm² or higher			
	Smoke Density		(ASTM E662)		Less than 450			
	Flame-retardant		Fire Defense Law in Japan Authorized No.E2240079					
	Antistatic		Less than 1.0kV (JIS L 1021-16, at 23 degrees centigrade, 25%RH)					
	Stain-resistant		Stain Release					
	Formaldehyde Radiation		F☆☆☆☆ Interior-fabrics Performance Evaluation Conference Certified No.J24-31927					
Way of Installation	<div><div><div>↑</div><div>↑</div><div>↑</div><div>↑</div></div>Monolithic</div> or <div><div><div>↑</div><div>→</div><div>→</div><div>↑</div></div>Quarter Turn</div>							
Recommended Adhesive from TOLI	TOLI ECO GA Cement		(required quantity)		for steel or plastic sub-floor		40 to 60 gram/m²	
	TOLI ECO GA Cement EX				for mortar and wood sub-floor		60 to 100 gram/m²	
Notes on Installation	Apply the adhesive on the whole surface of the sub-floor thinly and evenly. After drying, when the adhesive becomes translucent, install the tiles. Be careful not to put the tiles too tightly.							
Others	◆Please note that the product has the indigenous odor from its materials. ◆The combination of multiple colors can also work. Due to the difference of design and batch, the colors may not strictly match. ◆For FOGGYROCK, the color numbers ending with 2/4/6/8 have gradation in one tile. The gradation basically is described in a vertical direction to the arrow on the back, and there are some variations for that.							

MADE IN JAPAN



GX4801



■ GX4801



■ GX4803



■ GX4805



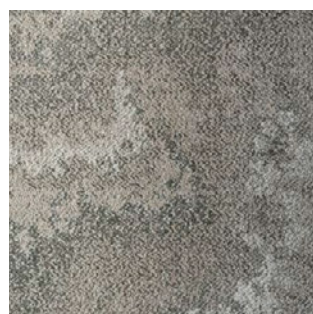
■ GX4807



■ GX4802



■ GX4804



■ GX4806



■ GX4808



# FOGGYROCK <GX-4800>

category: carpet tile



Carpet  
Tile



▲ GX4801/GX4802/GX4803/GX4804/GX4805/GX4806/GX4807/GX4808



▲ GX4805/GX4806 (Quarter Turn)



▲ GX4805/GX4806 (Monolithic)



# MORTARCLAY <GX-3700>

category: carpet tile

Very unique design inspired by mortar.  
MORTARCLAY is characterized by its subtle color gradation.



Composition	surface		BCF Nylon 100%		dyeing method of yarn		Solution Dyed	
	base fabric		Nonwoven Polyester		backing		PVC and Glass Fiber	
Specification	size		500mm×500mm		overall thickness		8.5mm	
	pile height		H 6.0mm to L 3.0mm (textured loop pile)					
	gauge		1/10	stitch		11.5	yarn weight (oz/sq.yd) 22.1	
Packing	16pcs/box = 4m <sup>2</sup> /box				Dimension		W 530mm × L 515mm × H 145mm	
Net Weight	19.2kg/box							
Performance	Critical Radiant Flux		(ASTM E648)		Class 1 Average CRF 0.45/cm <sup>2</sup> or higher			
	Smoke Density		(ASTM E662)		Less than 450			
	Flame-retardant		Fire Defense Law in Japan Authorized No.E2150026					
	Antistatic		Less than 1.0kV (JIS L 1021-16, at 23 degrees centigrade, 25%RH)					
	Stain-resistant		Stain Release					
	Formaldehyde Radiation		F☆☆☆☆ Interior-fabrics Performance Evaluation Conference Certified No.J15-31022					
Way of Installation	<div><div><div>↑</div><div>↑</div><div>↑</div><div>↑</div></div>Monolithic</div> or <div><div><div>↑</div><div>→</div><div>→</div><div>↑</div></div>Quarter Turn</div>							
Recommended Adhesive from TOLI	TOLI ECO GA Cement		(required quantity)		for steel or plastic sub-floor		40 to 60 gram/m <sup>2</sup>	
	TOLI ECO GA Cement EX				for mortar and wood sub-floor		60 to 100 gram/m <sup>2</sup>	
Notes on Installation	Apply the adhesive on the whole surface of the sub-floor thinly and evenly. After drying, when the adhesive becomes translucent, install the tiles. Be careful not to put the tiles too tightly.							
Others	Please note that the product has the indigenous odor from its materials.							

MADE IN JAPAN



GX3701



▲ GX3701/GX3702/GX3705/GX3706



■ GX3705



■ GX3701



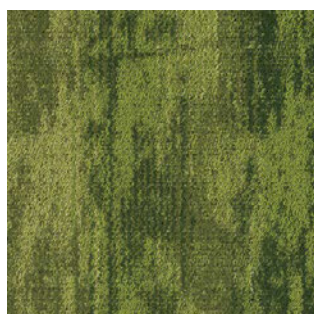
■ GX3702



■ GX3706



■ GX3708



■ GX3709



■ GX3707



# PLAID WAY <GX-3450>

category: carpet tile

The street scene from the air is abstractly described.  
The dynamic lattice pattern with a beautiful contrast  
will highlight the space.



Long Life



Carpet  
Tile

Composition	surface	BCF Nylon 100%		dyeing method of yarn		Solution Dyed	
	base fabric	Nonwoven Polyester		backing		PVC and Glass Fiber	
Specification	size	500mm×500mm		overall thickness		9.3mm	
	pile height	H 7.0mm to L 3.0mm (textured loop pile)					
	gauge	1/10	stitch	16.0	yarn weight (oz/sq.yd)	25.7	
Packing	16pcs/box = 4m <sup>2</sup> /box			Dimension	W 530mm × L 515mm × H 148mm		
Net Weight	21.5kg/box						
Performance	Critical Radiant Flux	(ASTM E648)	Class 2 Average CRF 0.22/cm <sup>2</sup> or higher				
	Smoke Density	(ASTM E662)	Less than 450				
	Flame-retardant	Fire Defense Law in Japan Authorized No.E2240106					
	Antistatic	Less than 1.0kV (JIS L 1021-16, at 23 degrees centigrade, 25%RH)					
	Stain-resistant	Stain Release					
	Formaldehyde Radiation	F☆☆☆☆ Interior-fabrics Performance Evaluation Conference Certified No.J24-31928					
Way of Installation	<div><div><div>↑</div><div>↑</div><div>↑</div><div>↑</div></div>Monolithic</div> or <div><div>↑</div><div>→</div><div>→</div><div>↑</div></div> Quarter Turn						
Recommended Adhesive from TOLI	TOLI ECO GA Cement	(required quantity)	for steel or plastic sub-floor		40 to 60 gram/m <sup>2</sup>		
	TOLI ECO GA Cement EX		for mortar and wood sub-floor		60 to 100 gram/m <sup>2</sup>		
Notes on Installation	Apply the adhesive on the whole surface of the sub-floor thinly and evenly. After drying, when the adhesive becomes translucent, install the tiles. Be careful not to put the tiles too tightly.						
Others	♦The color shading differs on a tile-by-tile basis. In case you do not feel comfortable about the floor after installation, please change the tiles partly so that it will look natural. ♦Please note that the product has the indigenous odor from its materials.						

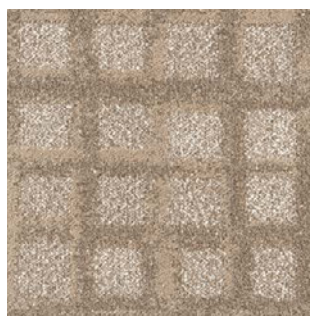
MADE IN JAPAN



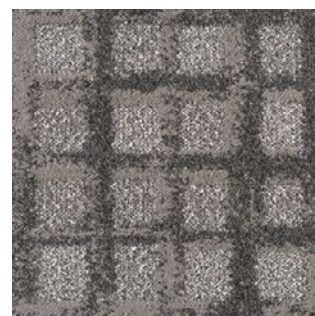
▲ GX3451/GX3452



GX3452



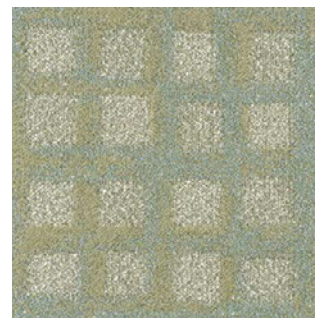
GX3451



GX3453



GX3452



GX3454



# FOLDSHAPE <GX-3250>

category: carpet tile

Beautiful diagonal image of layered papers is well expressed with delicate color shading. Its sharp silhouette will create a modern sophisticated place.



Long Life



Composition	surface		BCF Nylon 100%		dyeing method of yarn		Solution Dyed	
	base fabric		Nonwoven Polyester		backing		PVC and Glass Fiber	
Specification	size		500mm×500mm		overall thickness		9.5mm	
	pile height		H 6.0mm to L 3.0mm (textured loop pile)					
	gauge		1/10	stitch		16.0	yarn weight (oz/sq.yd) 23.6	
Packing	16pcs/box = 4m <sup>2</sup> /box				Dimension		W 530mm × L 515mm × H 156mm	
Net Weight	20.0kg/box							
Performance	Critical Radiant Flux		(ASTM E648)		Class 2 Average CRF 0.22/cm <sup>2</sup> or higher			
	Smoke Density		(ASTM E662)		Less than 450			
	Flame-retardant		Fire Defense Law in Japan Authorized No.E2240091					
	Antistatic		Less than 1.0kV (JIS L 1021-16, at 23 degrees centigrade, 25%RH)					
	Stain-resistant		Stain Release					
	Formaldehyde Radiation		F☆☆☆☆ Interior-fabrics Performance Evaluation Conference Certified No.J24-31929					
Way of Installation	<div><div><div>↑</div><div>↑</div><div>↑</div><div>↑</div></div><div>Monolithic</div><div>or</div><div><div><div>↑</div><div>→</div><div>→</div><div>↑</div></div><div>Quarter Turn</div></div></div>							
Recommended Adhesive from TOLI	TOLI ECO GA Cement		(required quantity)		for steel or plastic sub-floor		40 to 60 gram/m <sup>2</sup>	
	TOLI ECO GA Cement EX				for mortar and wood sub-floor		60 to 100 gram/m <sup>2</sup>	
Notes on Installation	◆Apply the adhesive on the whole surface of the sub-floor thinly and evenly. After drying, when the adhesive becomes translucent, install the tiles. Be careful not to put the tiles too tightly. ◆Due to its texture, the level difference might be caused on the joints of tiles.							
Others	Please note that the product has the indigenous odor from its materials.							

MADE IN JAPAN



GX3252



GX3251



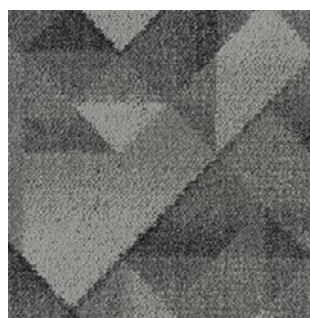
▲ GX3251/GX3252



GX3252



GX3254



GX3253



GX3255



# GEOSLANT <GX-4100>

category: carpet tile

Beautiful geometric pattern in the motif of randomly-painted concrete with vivid colors.



Carpet  
Tile

Composition	surface		BCF Nylon 100%		dyeing method of yarn		Solution Dyed	
	base fabric		Nonwoven Polyester		backing		PVC and Glass Fiber	
Specification	size		500mm×500mm		overall thickness		8.5mm	
	pile height		H 5.0mm to L 3.0mm (textured loop pile)					
	gauge		1/12	stitch		13.0	yarn weight (oz/sq.yd) 19.5	
Packing	16pcs/box = 4m <sup>2</sup> /box				Dimension		W 530mm × L 515mm × H 140mm	
Net Weight	21.0kg/box							
Performance	Critical Radiant Flux		(ASTM E648)		Class 2 Average CRF 0.22/cm <sup>2</sup> or higher			
	Smoke Density		(ASTM E662)		Less than 450			
	Flame-retardant		Fire Defense Law in Japan Authorized No.E2180249					
	Antistatic		Less than 1.0kV (JIS L 1021-16, at 23 degrees centigrade, 25%RH)					
	Stain-resistant		Stain Release					
	Formaldehyde Radiation		F☆☆☆☆ Interior-fabrics Performance Evaluation Conference Certified No.J18-21157					
Way of Installation	<div><div><div>↑</div><div>↑</div><div>↑</div><div>↑</div></div>Monolithic</div> or <div><div><div>↑</div><div>→</div><div>→</div><div>↑</div></div>Quarter Turn</div>							
Recommended Adhesive from TOLI	TOLI ECO GA Cement TOLI ECO GA Cement EX		(required quantity)		for steel or plastic sub-floor		40 to 60 gram/m <sup>2</sup>	
					for mortar and wood sub-floor		60 to 100 gram/m <sup>2</sup>	
Notes on Installation	Apply the adhesive on the whole surface of the sub-floor thinly and evenly. After drying, when the adhesive becomes translucent, install the tiles. Be careful not to put the tiles too tightly.							
Others	♦To have a natural image after installation, stripes are intentionally inserted in the design at regular intervals, which is not a manufacturing defect. In case you do not feel comfortable about the floor after installation, please change the tiles partly so that it will look natural. ♦Please note that the product has the indigenous odor from its materials.							

MADE IN JAPAN



GX4134



GX4131



GX4133



GX4132



GX4134

▲ GX4131/GX4132



# AQUALUCE <GX-4400>

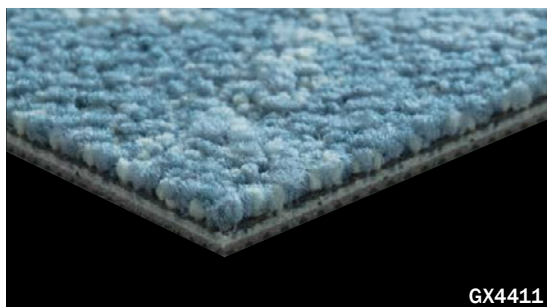
category: carpet tile

The change from calm water surface to wave splash is expressed by 3 different designs of the same color. The combination of 3 color codes will create dynamic scenic beauties of the sea surface.



Composition	surface		BCF Nylon 100%		dyeing method of yarn		Solution Dyed	
	base fabric		Nonwoven Polyester		backing		PVC and Glass Fiber	
Specification	size		500mm×500mm		overall thickness		8.5mm	
	pile height				H 6.0mm to L 3.0mm (textured loop pile)			
	gauge	1/10	stitch	13.5	yarn weight (oz/sq.yd)	GX4411/GX4421/GX4431 22.7 GX4412/GX4422/GX4432 22.1 GX4413/GX4423/GX4433 22.1		
Packing	16pcs/box = 4m <sup>2</sup> /box				Dimension	W 530mm × L 515mm × H 140mm		
Net Weight	19.3kg /box							
Performance	Critical Radiant Flux		(ASTM E648)		Class 2 Average CRF 0.22/cm <sup>2</sup> or higher			
	Smoke Density		(ASTM E662)		Less than 450			
	Flame-retardant		Fire Defense Law in Japan Authorized No.E2240092					
	Antistatic		Less than 1.0kV (JIS L 1021-16, at 23 degrees centigrade, 25%RH)					
	Stain-resistant		Stain Release					
	Formaldehyde Radiation		F☆☆☆☆ Interior-fabrics Performance Evaluation Conference Certified No.J24-31930					
Way of Installation	<div><div><div>↑</div><div>↑</div><div>↑</div><div>↑</div></div>Monolithic</div> or <div><div><div>↑</div><div>→</div><div>→</div><div>↑</div></div>Quarter Turn</div>							
Recommended Adhesive from TOLI	TOLI ECO GA Cement		(required quantity)		for steel or plastic sub-floor		40 to 60 gram/m <sup>2</sup>	
	TOLI ECO GA Cement EX				for mortar and wood sub-floor		60 to 100 gram/m <sup>2</sup>	
Notes on Installation	Apply the adhesive on the whole surface of the sub-floor thinly and evenly. After drying, when the adhesive becomes translucent, install the tiles. Be careful not to put the tiles too tightly.							
Others	♦Please note that the product has the indigenous odor from its materials. ♦The 1st digit 1 to 3 of the same color tone can be installed together as the combination. Due to the difference of design and batch, the colors may not strictly match. ♦The color codes with the 1st digit 1 & 2 have designs of wave splash. In monolithic installation, the tiles look like the wave is splashing from right to left. ♦In the room scene image, carpet tiles are installed in the direction of arrow mark. ♦When you install the tiles, make sure their direction.							

MADE IN JAPAN



GX4411



GX4411



GX4412



GX4421



GX4422



GX4431



GX4432



# AQUALUCE <GX-4400>

category: carpet tile



Carpet  
Tile



▲ GX4421/GX4422/GX4423/TTN3219 (LOOSELAY 50 NW-EX - page 321)



■ GX4413



■ GX4423



■ GX4433



▲ GX4412/GX4413



# LUCEART <GX-8500>

category: carpet tile

LUCEART conveys the image of natural scenery sparkling with light reflection. Its color mixture and uneven texture can create a rich expression.



Long Life

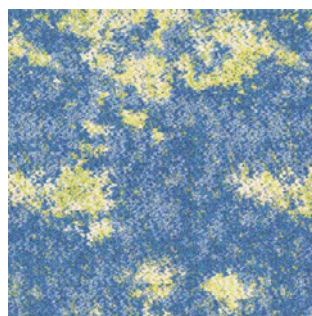


Composition	surface	BCF Nylon 100%		dyeing method of yarn		Solution Dyed	
	base fabric	Nonwoven Polyester		backing		PVC and Glass Fiber	
Specification	size	500mm×500mm		overall thickness		9.3mm	
	pile height	H 6.5mm to L 3.0mm (textured loop pile)					
	gauge	1/10	stitch	16.0	yarn weight (oz/sq.yd)	26.0	
Packing	16pcs/box = 4m <sup>2</sup> /box			Dimension	W 530mm × L 515mm × H 153mm		
Net Weight	19.6kg /box						
Performance	Critical Radiant Flux	(ASTM E648)		Class 1. Average CRF 0.45/cm <sup>2</sup> or higher			
	Smoke Density	(ASTM E662)		Less than 450			
	Flame-retardant	Fire Defense Law in Japan Authorized No.E2150033					
	Antistatic	Less than 1.0kV (JIS L 1021-16, at 23 degrees centigrade, 25%RH)					
	Stain-resistant	Stain Release					
	Formaldehyde Radiation	F☆☆☆☆ Interior-fabrics Performance Evaluation Conference Certified No.J15-31029					
Way of Installation	<div><div><div>↑</div><div>↑</div><div>↑</div><div>↑</div></div>Monolithic</div> or <div><div><div>↑</div><div>→</div><div>→</div><div>↑</div></div>Quarter Turn</div>						
Recommended Adhesive from TOLI	TOLI ECO GA Cement TOLI ECO GA Cement EX	(required quantity)	for steel or plastic sub-floor		40 to 60 gram/m <sup>2</sup>		
			for mortar and wood sub-floor		60 to 100 gram/m <sup>2</sup>		
Notes on Installation	Apply the adhesive on the whole surface of the sub-floor thinly and evenly. After drying, when the adhesive becomes translucent, install the tiles. Be careful not to put the tiles too tightly.						
Others	Please note that the product has the indigenous odor from its materials.						

MADE IN JAPAN



GX8502



GX8501



GX8504



▲ GX8501



GX8502



GX8505



GX8503

※In GX8502 soft stripes are described within the pattern. By changing the direction of installation, you can have different floor images.



# PRARIE <GX-4200>

category: carpet tile

Natural grass-look design and texture. Relaxing spaces can be instantly created in the offices and the commercial facilities.



Long Life

Composition	surface	BCF Nylon 100%	dyeing method of yarn	Solution Dyed
	base fabric	Nonwoven Polyester	backing	PVC and Glass Fiber
Specification	size	500mm×500mm	overall thickness	9.3mm
	pile height	H 8.0mm / L 3.5mm (cut and loop pile)		
	gauge	1/10	stitch	9.5
			yarn weight (oz/sq.yd)	29.5

Packing	16pcs/box = 4m <sup>2</sup> /box		Dimension	W 530mm × L 515mm × H 151mm
Net Weight	21.0kg/box			
Performance	Critical Radiant Flux	(ASTM E648)	Class 2 Average CRF 0.22/cm <sup>2</sup> or higher	
	Smoke Density	(ASTM E662)	Less than 450	
	Flame-retardant	Fire Defense Law in Japan Authorized No.E2180321		
	Antistatic	Less than 1.0kV (JIS L 1021-16, at 23 degrees centigrade, 25%RH)		
	Stain-resistant	Stain Release		
	Formaldehyde Radiation	F☆☆☆☆ Interior-fabrics Performance Evaluation Conference Certified No.J18-21156		
Way of Installation	<div><div><div>↑</div><div>↑</div><div>↑</div><div>↑</div></div>Monolithic</div> or <div><div><div>↑</div><div>→</div><div>→</div><div>↑</div></div>Quarter Turn</div>			
Recommended Adhesive from TOLI	TOLI ECO GA Cement	(required quantity)	for steel or plastic sub-floor	40 to 60 gram/m <sup>2</sup>
	TOLI ECO GA Cement EX		for mortar and wood sub-floor	60 to 100 gram/m <sup>2</sup>
Notes on Installation	Apply the adhesive on the whole surface of the sub-floor thinly and evenly. After drying, when the adhesive becomes translucent, install the tiles. Be careful not to put the tiles too tightly.			
Others	♦Occasionally the direction of cut-piles are partly broken in part, which looks like color shading. This is one of the characteristics of cut-pile carpets and not a manufacturing defect. ♦The color shading differs on a tile-by-tile basis. In case you do not feel comfortable about the floor after installation, please change the tiles partly so that it will look natural. ♦Please note that the product has the indigenous odor from its materials.			

MADE IN JAPAN



GX4211



GX4212

▲ GX4211/GX4212



# HAZE PEAK <GX-3150>

category: carpet tile

Impressive pattern made by subtle diagonal lines on the top of natural-looking color shading and texture.



Composition	surface		BCF Nylon 100%		dyeing method of yarn		Solution Dyed		
	base fabric		Nonwoven Polyester		backing		PVC and Glass Fiber		
Specification	size		500mm×500mm			overall thickness		8.0mm	
	pile height		H 5.5mm to L 3.0mm (textured loop pile)						
	gauge		1/12	stitch		11.5	yarn weight (oz/sq.yd) 19.2		
Packing	16pcs/box = 4m <sup>2</sup> /box				Dimension		W 530mm × L 515mm × H 128mm		
Net Weight	21.0kg/box								
Performance	Critical Radiant Flux		(ASTM E648)		Class 2 Average CRF 0.22/cm <sup>2</sup> or higher				
	Smoke Density		(ASTM E662)		Less than 450				
	Flame-retardant		Fire Defense Law in Japan Authorized No.E2210058						
	Antistatic		Less than 1.0kV (JIS L 1021-16, at 23 degrees centigrade, 25%RH)						
	Stain-resistant		Stain Release						
	Formaldehyde Radiation		F☆☆☆☆ Interior-fabrics Performance Evaluation Conference Certified No.J21-31638						
Way of Installation	<div><div><div>↑</div><div>↑</div><div>↑</div><div>↑</div></div>Monolithic</div> or <div><div><div>↑</div><div>→</div><div>→</div><div>↑</div></div>Quarter Turn</div>								
Recommended Adhesive from TOLI	TOLI ECO GA Cement				for steel or plastic sub-floor		40 to 60 gram/m <sup>2</sup>		
	TOLI ECO GA Cement EX (required quantity)				for mortar and wood sub-floor		60 to 100 gram/m <sup>2</sup>		
Notes on Installation	◆Apply the adhesive on the whole surface of the sub-floor thinly and evenly. After drying, when the adhesive becomes translucent, install the tiles. Be careful not to put the tiles too tightly. ◆Due to its texture, the level difference might be caused on the joints of tiles.								
Others	Please note that the product has the indigenous odor from its materials.								

MADE IN JAPAN



GX3152



|| GX3151



|| GX3155



▲ GX3153/TTN3213 (LOOSELAY 50 NW-EX - page 321)



|| GX3152



|| GX3153



# WAFFLE KNIT <GX-2650>

category: carpet tile

The image of knit fabric - rough texture and yarn's overlapping are well expressed by high and low piles. Casual and warm feeling can be created in your space.



Composition	surface		BCF Nylon 100%		dyeing method of yarn		Solution Dyed			
	base fabric		Nonwoven Polyester		backing		PVC and Glass Fiber			
Specification	size		500mm×500mm			overall thickness		9.8mm		
	pile height		H 8.5mm to L 3.0mm (textured loop pile)							
	gauge		1/10		stitch		17.5		yarn weight (oz/sq.yd)	24.5
Packing	16pcs/box = 4m <sup>2</sup> /box					Dimension		W 530mm × L 515mm × H 161mm		
Net Weight	20.2kg/box									
Performance	Critical Radiant Flux		(ASTM E648)		Class 2 Average CRF 0.22/cm <sup>2</sup> or higher					
	Smoke Density		(ASTM E662)		Less than 450					
	Flame-retardant		Fire Defense Law in Japan Authorized No.E2210059							
	Antistatic		Less than 1.0kV (JIS L 1021-16, at 23 degrees centigrade, 25%RH)							
	Stain-resistant		Stain Release							
	Formaldehyde Radiation		F☆☆☆☆ Interior-fabrics Performance Evaluation Conference Certified No.J21-31637							
Way of Installation	<div><div><div>↑</div><div>↑</div><div>↑</div><div>↑</div></div>Monolithic</div> or <div><div><div>↑</div><div>→</div><div>→</div><div>↑</div></div>Quarter Turn</div>									
Recommended Adhesive from TOLI	TOLI ECO GA Cement				for steel or plastic sub-floor		40 to 60 gram/m <sup>2</sup>			
	TOLI ECO GA Cement EX (required quantity)				for mortar and wood sub-floor		60 to 100 gram/m <sup>2</sup>			
Notes on Installation	◆Apply the adhesive on the whole surface of the sub-floor thinly and evenly. After drying, when the adhesive becomes translucent, install the tiles. Be careful not to put the tiles too tightly. ◆Due to its texture, the level difference might be caused on the joints of tiles.									
Others	Please note that the product has the indigenous odor from its materials.									

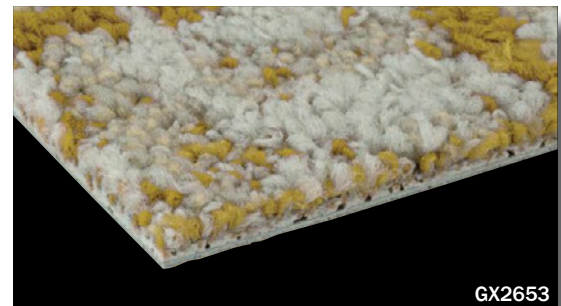
MADE IN JAPAN



GX2651



GX2655



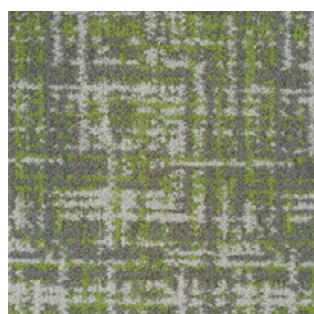
GX2653



GX2652



GX2653



GX2656



▲ GX2656/TTN3122 (LOOSELAY 50 NW-EX - page 324)



# ALTGLAN <GX-3800>

category: carpet tile

Overlapped leaves glittering in the sunshine is well described by expressive deep color tones and delicate texture.

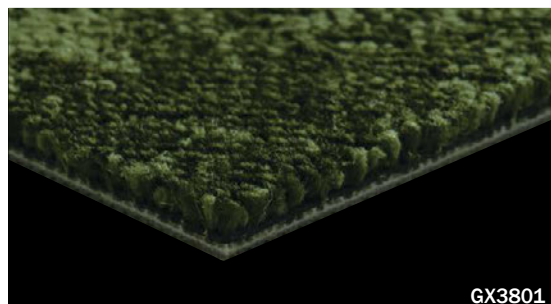


Recycle  
Long Life



Composition	surface		BCF Nylon 100%		dyeing method of yarn		Piece Dyed	
	base fabric		Nonwoven Polyester		backing		PVC and Glass Fiber (Sustive Back)	
Specification	size		500mm×500mm		overall thickness		8.5mm	
	pile height		H 5.5mm to L 3.0mm (textured loop pile : tip sheared)					
	gauge		1/10	stitch		12.0	yarn weight (oz/sq.yd) 21.5	
Packing	16pcs/box = 4m <sup>2</sup> /box				Dimension		W 530mm × L 515mm × H 140mm	
Net Weight	17.0kg/box							
Performance	Critical Radiant Flux		(ASTM E648)		Class 2			Average CRF 0.22/cm <sup>2</sup> or higher
	Smoke Density		(ASTM E662)		Less than			450
	Flame-retardant		Fire Defense Law in Japan Authorized No.E2150027					
	Antistatic		Less than 1.0kV (JIS L 1021-16, at 23 degrees centigrade, 25%RH)					
	Stain-resistant		Stain Release					
	Formaldehyde Radiation		F☆☆☆☆ Interior-fabrics Performance Evaluation Conference Certified No.J15-31023					
Way of Installation	<div><div><div>↑</div><div>↑</div><div>↑</div><div>↑</div></div>Monolithic</div> or <div><div><div>↑</div><div>→</div><div>→</div><div>↑</div></div>Quarter Turn</div>							
Recommended Adhesive from TOLI	TOLI ECO GA Cement		(required quantity)		for steel or plastic sub-floor		40 to 60 gram/m <sup>2</sup>	
	TOLI ECO GA Cement EX				for mortar and wood sub-floor		60 to 100 gram/m <sup>2</sup>	
Notes on Installation	♦Apply the adhesive on the whole surface of the sub-floor thinly and evenly. After drying, when the adhesive becomes translucent, install the tiles. Be careful not to put the tiles too tightly. ♦Avoid the installation at temperature of 5 degrees centigrade or lower.							
Others	♦Occasionally the direction of tip sheared piles are partly broken in part, which looks like color shading. This is one of the characteristics of tip sheared carpets and not a manufacturing defect. ♦Please note that the product has the indigenous odor from its materials.							

MADE IN JAPAN



GX3801



GX3808



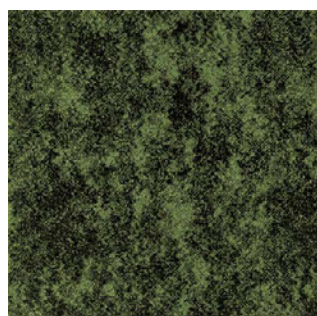
GX3812



GX3814



GX3813



GX3801



GX3806



GX3809

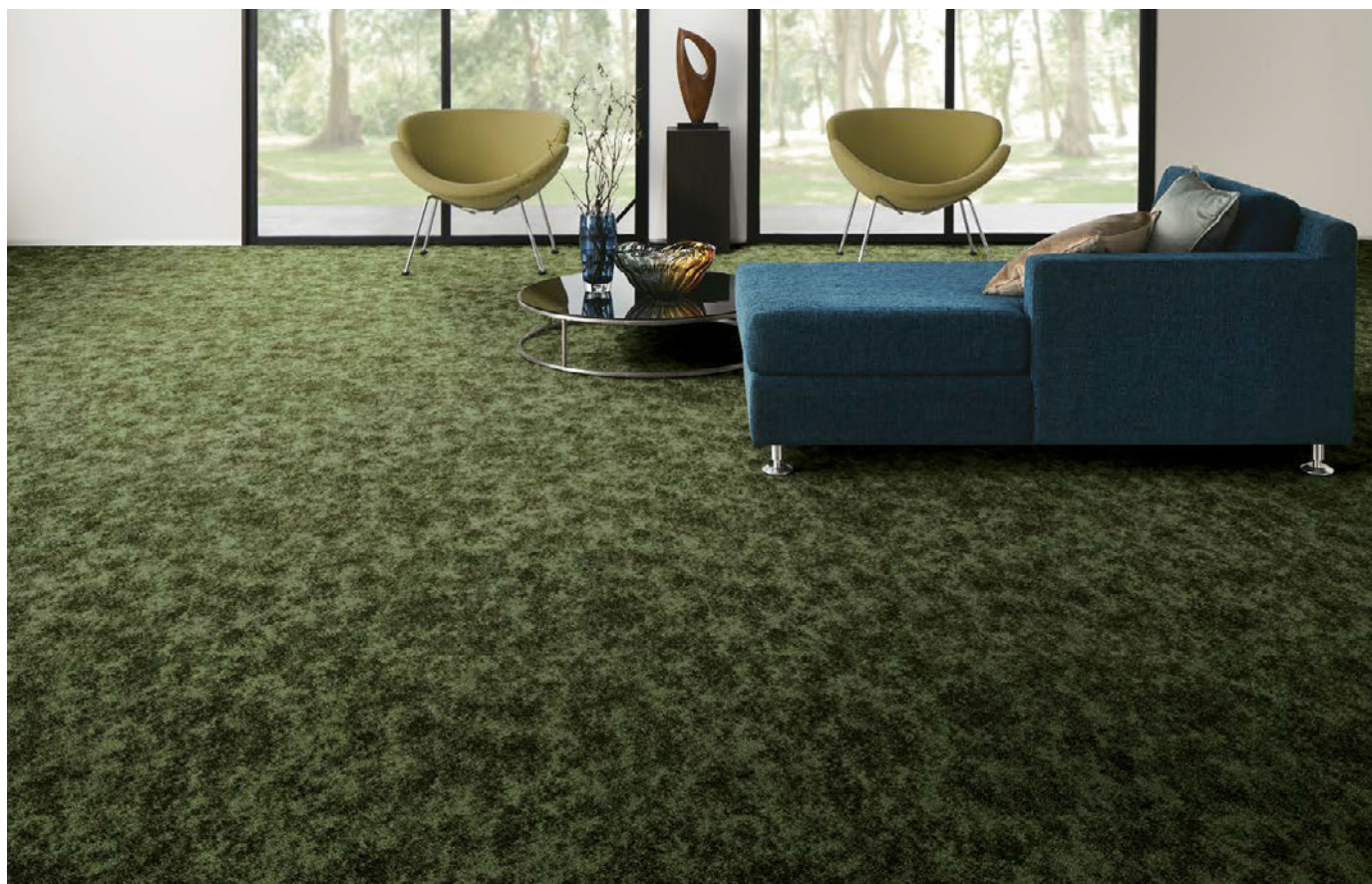


# ALTGLAN <GX-3800>

category: carpet tile



▲ GX3806/MT3816F (MT-3800 · page 140)



▲ GX3801



# MT-3800

(made-to-order product)

category: carpet tile

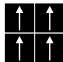
Organic-look embossing inspired by natural scenic beauty is amazingly blended with velvet-imaged texture.



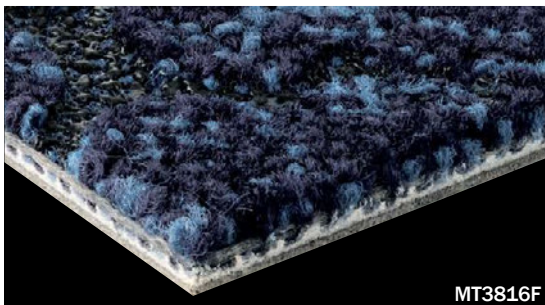
Long Life



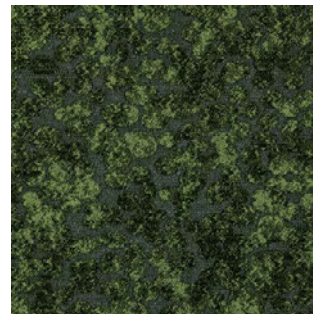
GOOD DESIGN

Composition	surface	BCF Nylon 100%		dyeing method of yarn		Piece Dyed	
	base fabric	Nonwoven Polyester		backing		PVC and Glass Fiber	
Specification	size	500mm×500mm		overall thickness		8.5mm	
	pile height	H 5.5mm to L 3.0mm (textured loop pile: tip sheared) with special embossing					
	gauge	1/10	stitch	12.0	yarn weight (oz/sq.yd)	21.5	
Packing	16pcs/box = 4m <sup>2</sup> /box			Dimension	W 530mm × L 515mm × H 140mm		
Net Weight	20.6kg/box						
Performance	Critical Radiant Flux	(ASTM E648)		Class 1 Average CRF 0.45/cm <sup>2</sup> or higher			
	Smoke Density	(ASTM E662)		Less than 450			
	Flame-retardant	Fire Defense Law in Japan Authorized No.E2180269					
	Antistatic	Less than 1.0kV (JIS L 1021-16,at 23degrees centigrade,25%RH)					
	Stain-resistant	Stain Release					
	Formaldehyde Radiation	F☆☆☆☆ Interior-fabrics Performance Evaluation Conference Certified No.J18-31419					
Way of Installation	 Monolithic						
Recommended Adhesive from TOLI	TOLI ECO GA Cement		for steel or plastic sub-floor		40 to 60 gram/m <sup>2</sup>		
	TOLI ECO GA Cement EX		(required quantity) for mortar and wood sub-floor		60 to 100 gram/m <sup>2</sup>		
Notes on Installation	♦Apply the adhesive on the whole surface of the sub-floor thinly and evenly. After drying, when the adhesive becomes translucent, install the tiles. Be careful not to put the tiles too tightly. ♦MT-3800 is using the same surface material as ALTGLAN (page 138), so the coordination with ALTGLAN is also workable. ♦Slight cracking may be found on the embossed part, which does not affect the quality of the product. ♦Melted parts on the surface piles have a hard texture. Please do not step without your shoes on.						
Others	Please note that the product has the indigenous odor from its materials.						

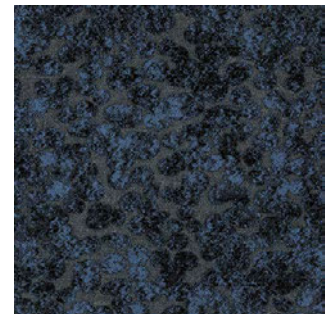
MADE IN JAPAN



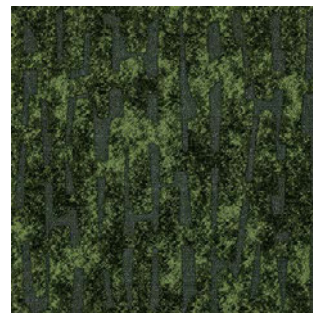
MT3816F



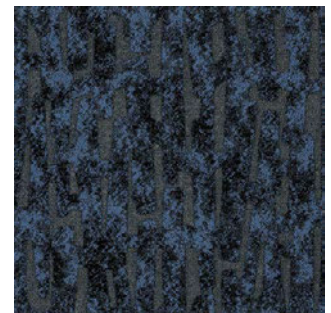
MT3811F



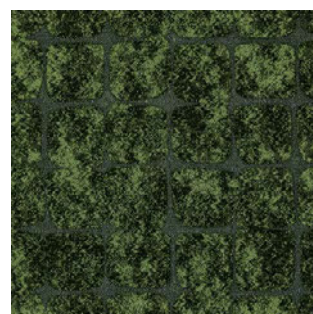
MT3816F



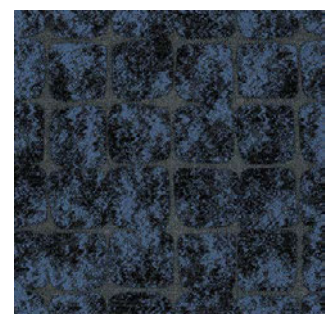
MT3821F



MT3826F



MT3831F



MT3836F



# MT-3800

(made-to-order product)

category: carpet tile



Eco-friendly

Long Life



GOOD DESIGN



▲ MT3811F/GX3801 (ALTGLAN · page 138) / TTN3113 (LOOSELAY 50 NW-EX · page 324)



▲ MT3836F/GX3806 (ALTGLAN · page 138)

Carpet  
Tile



# OCASH <GX-2400>

category: carpet tile

High-quality texture made by shiny yarns and twisted yarns. Its delicate contrast will create a classy atmosphere on the floor.

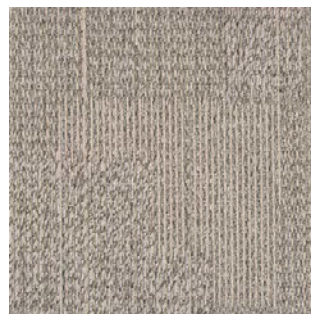


Composition	surface		BCF Nylon 100%		dyeing method of yarn		Solution Dyed	
	base fabric		Nonwoven Polyester		backing		PVC and Glass Fiber	
Specification	size		500mm×500mm		overall thickness		7.0mm	
	pile height		H 4.0mm to L 3.0mm (textured loop pile)					
	gauge		1/8	stitch		11.5	yarn weight (oz/sq.yd) 23.6	
Packing	16pcs/box = 4m <sup>2</sup> /box				Dimension		W 530mm × L 515mm × H 118mm	
Net Weight	20.7kg/box							
Performance	Critical Radiant Flux		(ASTM E648)		Class 1 Average CRF 0.45/cm <sup>2</sup> or higher			
	Smoke Density		(ASTM E662)		Less than 450			
	Flame-retardant		Fire Defense Law in Japan Authorized No.E0080040					
	Antistatic		Less than 1.0kV (JIS L 1021-16, at 23 degrees centigrade, 25%RH)					
	Stain-resistant		Stain Release					
	Formaldehyde Radiation		F☆☆☆☆ Interior-fabrics Performance Evaluation Conference Certified No.J08-30517					
Way of Installation	<div><div><div>↑</div><div>↑</div><div>↑</div><div>↑</div></div>Monolithic</div> or <div><div><div>↑</div><div>→</div><div>→</div><div>↑</div></div>Quarter Turn</div>							
Recommended Adhesive from TOLI	TOLI ECO GA Cement		(required quantity)		for steel or plastic sub-floor		40 to 60 gram/m <sup>2</sup>	
	TOLI ECO GA Cement EX				for mortar and wood sub-floor		60 to 100 gram/m <sup>2</sup>	
Notes on Installation	Apply the adhesive on the whole surface of the sub-floor thinly and evenly. After drying, when the adhesive becomes translucent, install the tiles. Be careful not to put the tiles too tightly.							
Others	◆To have a natural image after installation, stripes are intentionally inserted in the design at regular intervals, which is not a manufacturing defect. In case you do not feel comfortable about the floor after installation, please change the tiles partly so that it will look natural. ◆Please note that the product has the indigenous odor from its materials.							

MADE IN JAPAN



GX2402



GX2402



GX2405



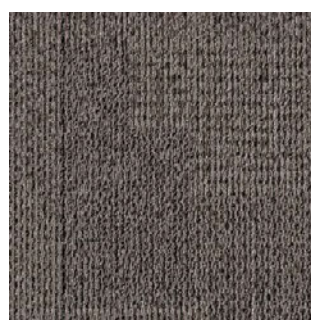
▲ GX2404



GX2404



GX2401



GX2403



# ETRICO <GX-8600>

category: carpet tile

With its fine mixture of colored yarns as well as its soft texture of big loop piles, ETRICO will convey the feeling of high-class woven fabric like tweed.



Long Life



GOOD  
DESIGN

Composition	surface	BCF Nylon 100%		dyeing method of yarn		Solution Dyed	
	base fabric	Nonwoven Polyester		backing		PVC and Glass Fiber	
Specification	size	500mm×500mm		overall thickness		8.5mm	
	pile height	H 6.0mm to L 3.0mm (textured loop pile)					
	gauge	1/10	stitch	13.5	yarn weight (oz/sq.yd)	21.5	
Packing	16pcs/box = 4m <sup>2</sup> /box			Dimension	W 530mm × L 515mm × H 140mm		
Net Weight	18.4kg/box						
Performance	Critical Radiant Flux	(ASTM E648)	Class 1 Average CRF 0.45/cm <sup>2</sup> or higher				
	Smoke Density (flaming)	(ASTM E662)	Less than 450				
	Flame-retardant	Fire Defense Law in Japan Authorized No.E2160061					
	Antistatic	Less than 1.0kV (JIS L 1021-16, at 23 degrees centigrade, 25%RH)					
	Stain-resistant	◆ Stain Release (NANO CLEAN)					
	Formaldehyde Radiation	F☆☆☆☆ Interior-fabrics Performance Evaluation Conference Certified No.J16-31181					
Way of Installation	<div><div><div>↑</div><div>↑</div><div>↑</div><div>↑</div></div>Monolithic</div> or <div><div><div>↑</div><div>→</div><div>→</div><div>↑</div></div>Quarter Turn</div>						
Recommended Adhesive from TOLI	TOLI ECO GA Cement	(required quantity)		for steel or plastic sub-floor		40 to 60 gram/m <sup>2</sup>	
	TOLI ECO GA Cement EX			for mortar and wood sub-floor		60 to 100 gram/m <sup>2</sup>	
Notes on Installation	◆Apply the adhesive on the whole surface of the sub-floor thinly and evenly. After drying, when the adhesive becomes translucent, install the tiles. Be careful not to put the tiles too tightly. ◆Right after installation, something like color-shading could be seen on the surface. This is caused by lying down of piles which will be recovered over time. ◆Due to the characteristic of its pattern, surface piles may not be smoothly connected on the joints.						
Others	Please note that the product has the indigenous odor from its materials.						

MADE IN JAPAN



GX8601



GX8603



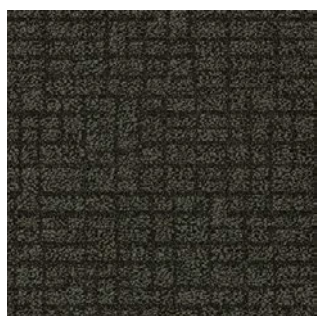
GX8601



GX8602



GX8604



GX8605



## NANO CLEAN

"Nano Clean" provides more excellent stain resistance to soils by adding special Nano finish to the existing stain release by water-repellent finished.

※◆ The color codes marked with "Nano Clean" have Nano Clean finish on the surface.



▲ TTN3205 (LOOSELAY 50 NW-EX - page 321) / GX8601



# LATTICLOTH <GX-4900>

category: carpet tile

Classy lattice pattern like expressive woven fabric. Its beautiful texture and 3-dimensional feeling are highlighted by multi-colored yarns.



Composition	surface		BCF Nylon 100%		dyeing method of yarn	Solution Dyed and Space Dyed	
	base fabric		Nonwoven Polyester		backing		PVC and Glass Fiber
Specification	size		500mm×500mm		overall thickness		8.0mm
	pile height		H 6.0mm to L 3.0mm (textured loop pile)				
	gauge	1/12	stitch		11.0	yarn weight (oz/sq.yd)	19.5
Packing	16pcs/box = 4m <sup>2</sup> /box				Dimension	W 530mm × L 515mm × H 132mm	
Net Weight	21.5kg/box						
Performance	Critical Radiant Flux		(ASTM E648)		Class 1 Average CRF 0.45/cm <sup>2</sup> or higher		
	Smoke Density		(ASTM E662)		Less than 450		
	Flame-retardant		Fire Defense Law in Japan Authorized No.E2180252				
	Antistatic		Less than 1.0kV (JIS L 1021-16, at 23 degrees centigrade, 25%RH)				
	Stain-resistant		Stain Release				
	Formaldehyde Radiation		F☆☆☆☆ Interior-fabrics Performance Evaluation Conference Certified No.J18-21152				
Way of Installation	<div><div><div>↑</div><div>↑</div><div>↑</div><div>↑</div></div>Monolithic</div> or <div><div><div>↑</div><div>→</div><div>→</div><div>↑</div></div>Quarter Turn</div>						
Recommended Adhesive from TOLI	TOLI ECO GA Cement		(required quantity)		for steel or plastic sub-floor		40 to 60 gram/m <sup>2</sup>
	TOLI ECO GA Cement EX				for mortar and wood sub-floor		60 to 100 gram/m <sup>2</sup>
Notes on Installation	Apply the adhesive on the whole surface of the sub-floor thinly and evenly. After drying, when the adhesive becomes translucent, install the tiles. Be careful not to put the tiles too tightly.						
Others	Please note that the product has the indigenous odor from its materials.						

MADE IN JAPAN



GX4901



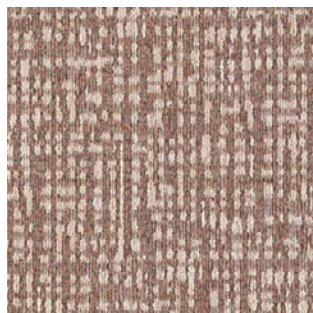
GX4901



GX4902



GX4904



GX4903



▲ GX4901/TTN3207 (LOOSELAY 50 NW-EX - page 321)



# GRANASTONE <GX-7650>

category: carpet tile

Beautiful natural stone-look pattern inspired by granite. Its delicate feeling and sophisticated colors will create a classy room scene.



Composition	surface		BCF Nylon 100%		dyeing method of yarn		Solution Dyed				
	base fabric		Nonwoven Polyester		backing		PVC and Glass Fiber				
Specification	size		500mm×500mm		overall thickness		10.0mm				
	pile height		H 7.5mm to L 2.5mm (cut and loop pile)								
	gauge		1/10		stitch		12.5		yarn weight (oz/sq.yd)		27.4

Packing	16pcs/box = 4m <sup>2</sup> /box		Dimension	W 530mm × L 515mm × H 164mm	
Net Weight	21.0kg/box				
Performance	Critical Radiant Flux	(ASTM E648)	Class 2 Average CRF 0.22/cm <sup>2</sup> or higher		
	Smoke Density	(ASTM E662)	Less than 450		
	Flame-retardant	Fire Defense Law in Japan Authorized No.E2240081			
	Antistatic	Less than 1.0kV (JIS L 1021-16, at 23 degrees centigrade, 25%RH)			
	Stain-resistant	Stain Release			
	Formaldehyde Radiation	F☆☆☆☆ Interior-fabrics Performance Evaluation Conference Certified No.J24-31931			
Way of Installation	<div><div><div>↑</div><div>↑</div><div>↑</div><div>↑</div></div>Monolithic</div> or <div><div><div>↑</div><div>→</div><div>→</div><div>↑</div></div>Quarter Turn</div>				
Recommended Adhesive from TOLI	TOLI ECO GA Cement		for steel or plastic sub-floor		40 to 60 gram/m <sup>2</sup>
	TOLI ECO GA Cement EX (required quantity)		for mortar and wood sub-floor		60 to 100 gram/m <sup>2</sup>
Notes on Installation	Apply the adhesive on the whole surface of the sub-floor thinly and evenly. After drying, when the adhesive becomes translucent, install the tiles. Be careful not to put the tiles too tightly.				
Others	◆Please note that the product has the indigenous odor from its materials. ◆Occasionally the direction of cut-piles are partly broken in part, which looks like color shading. This is one of the characteristics of cut-pile carpets and not a manufacturing defect.				

MADE IN JAPAN



▲ GX7654



GX7652



■ GX7651



■ GX7653



■ GX7652



■ GX7654



# CALMGRAIN <GX-5100>

category: carpet tile

Rich volume of high and low loop piles, and beautiful mixture of deep-colored yarns — with its high-end texture, CALMGRAIN will convey a sophisticated feeling in your space.



Long Life

Composition	surface	BCF Nylon 100%		dyeing method of yarn		Solution Dyed	
	base fabric	Nonwoven Polyester		backing		PVC and Glass Fiber	
Specification	size	500mm×500mm		overall thickness		8.0mm	
	pile height	H 6.0mm to L 3.0mm (textured loop pile)					
	gauge	1/12	stitch	11.0	yarn weight (oz/sq.yd)	18.0	
Packing	16pcs/box = 4m <sup>2</sup> /box			Dimension	W 530mm × L 515mm × H 136mm		
Net Weight	23.2kg/box						
Performance	Critical Radiant Flux	(ASTM E648)	Class 1 Average CRF 0.45/cm <sup>2</sup> or higher				
	Smoke Density	(ASTM E662)	Less than 450				
	Flame-retardant	Fire Defense Law in Japan Authorized No.E2150029					
	Antistatic	Less than 1.0kV (JIS L 1021-16, at 23 degrees centigrade, 25%RH)					
	Stain-resistant	Stain Release					
	Formaldehyde Radiation	F☆☆☆☆ Interior-fabrics Performance Evaluation Conference Certified No.J15-31025					
Way of Installation	<div><div><div>↑</div><div>↑</div><div>↑</div><div>↑</div></div>Monolithic</div> or <div><div><div>↑</div><div>→</div><div>→</div><div>↑</div></div>Quarter Turn</div>						
Recommended Adhesive from TOLI	TOLI ECO GA Cement		(required quantity)	for steel or plastic sub-floor		40 to 60 gram/m <sup>2</sup>	
	TOLI ECO GA Cement EX			for mortar and wood sub-floor		60 to 100 gram/m <sup>2</sup>	
Notes on Installation	♦Apply the adhesive on the whole surface of the sub-floor thinly and evenly. After drying, when the adhesive becomes translucent, install the tiles. Be careful not to put the tiles too tightly. ♦Right after installation, something like color-shading could be seen on the surface. This is caused by lying down of piles which will be recovered over time. ♦The shadows of Joints are sometimes visible, which is not a manufacturing defect.						
Others	Please note that the product has the indigenous odor from its materials.						

MADE IN JAPAN



GX5101



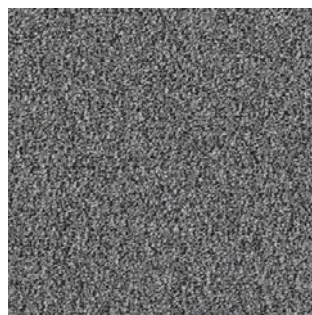
GX5107



GX5101



▲ GX5108/GX5104



GX5104



GX5103



GX5102



GX5108



# MT-5100

(made-to-order product)

category: carpet tile

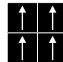
Flowing fur image is boldly expressed by unique embossing. Can be installed together with CALMGRAIN <GX-5100>.



Long Life



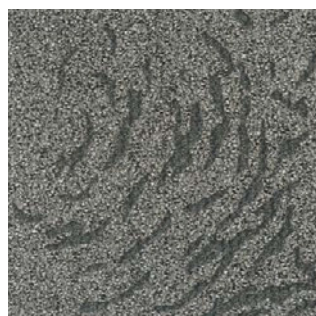
GOOD DESIGN

Composition	surface		BCF Nylon 100%		dyeing method of yarn		Solution Dyed	
	base fabric		Nonwoven Polyester		backing		PVC and Glass Fiber	
Specification	size		500mm×500mm		overall thickness		8.0mm	
	pile height		H 6.0mm to L 3.0mm (textured loop pile) with special embossing					
	gauge		1/12	stitch		11.0	yarn weight (oz/sq.yd) 18.0	
Packing	16pcs/box = 4m <sup>2</sup> /box				Dimension		W 530mm × L 515mm × H 132mm	
Net Weight	23.2kg /box							
Performance	Flame-retardant		Fire Defense Law in Japan Authorized No.E2180270					
	Antistatic		Less than 1.0kV (JIS L 1021-16,at 23degrees centigrade,25%RH)					
	Stain-resistant		Stain Release					
	Formaldehyde Radiation		F☆☆☆☆ Interior-fabrics Performance Evaluation Conference Certified No.J18-31418					
Way of Installation					 Monolithic			
Recommended Adhesive from TOLI	TOLI ECO GA Cement		(required quantity)		for steel or plastic sub-floor		40 to 60 gram/m <sup>2</sup>	
	TOLI ECO GA Cement EX				for mortar and wood sub-floor		60 to 100 gram/m <sup>2</sup>	
Notes on Installation	<p>◆The tiles should be installed in Monolithic way based on the direction of arrow marks on the back. Otherwise the pattern will not be smoothly connected.</p> <p>◆For MT5151F, MT5154F, MT5171F, MT5174F, MT5191F, and MT5194F, there are 5 different designs each for the same one color code. In case you feel uncomfortable on the floor finish after the installation, partly relocate the tiles.</p> <p>◆5 different designs are randomly packed in one carton box. Specific designs cannot be chosen.</p> <p>◆Even for the same color code, if the production lot is different, the color may not match.</p> <p>◆Apply the adhesive on the whole surface of the sub-floor thinly and evenly. After drying, when the adhesive becomes translucent, install the tiles. Be careful not to put the tiles too tightly.</p> <p>◆MT-5100 is using the same surface material as CALMGRAIN (page 126), so the coordination with CALMGRAIN is also workable.</p> <p>◆Slight cracking may be found on the embossed part, which does not affect the quality of the product.</p> <p>◆Melted parts on the surface piles have a hard texture. Please do not step without your shoes on.</p>							
Others	Please note that the product has the indigenous odor from its materials.							

MADE IN JAPAN



MT5151F



MT5154F



MT5171F



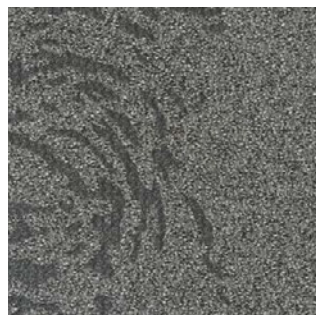
MT5171F



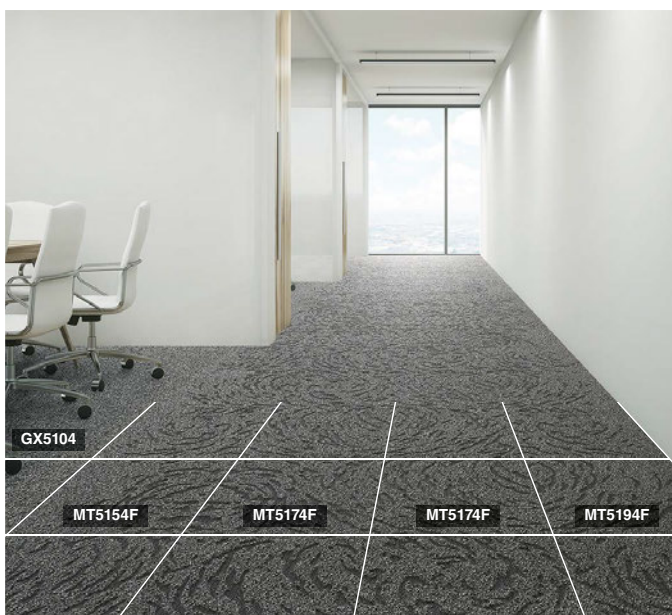
MT5174F



MT5191F



MT5194F



▲ MT5154F/MT5174F/MT5194F/GX5104 (CALMGRAIN · page 146)



# ORVIE <GX-8300>

category: carpet tile

Beautiful random block pattern created by multi-colored cut & loop piles — ORVIE's 3-dimensional image will be more clearly shown by light reflection.



Long Life

Composition	surface	BCF Nylon 100%		dyeing method of yarn		Solution Dyed	
	base fabric	Nonwoven Polyester		backing		PVC and Glass Fiber	
Specification	size	500mm×500mm		overall thickness		9.0mm	
	pile height	H 6.5mm / L 4.5mm (cut and loop pile)					
	gauge	1/10	stitch	12.0	yarn weight (oz/sq.yd)	25.1	
Packing	16pcs/box = 4m <sup>2</sup> /box			Dimension	W 530mm × L 515mm × H 150mm		
Net Weight	19.2kg/box						
Performance	Critical Radiant Flux	(ASTM E648)		Class 1 Average CRF 0.45/cm <sup>2</sup> or higher			
	Smoke Density	(ASTM E662)		Less than 450			
	Flame-retardant	Fire Defense Law in Japan Authorized No.E2150031					
	Antistatic	Less than 1.0kV (JIS L 1021-16, at 23 degrees centigrade, 25%RH)					
	Stain-resistant	Stain Release					
	Formaldehyde Radiation	F☆☆☆☆ Interior-fabrics Performance Evaluation Conference Certified No.J15-31027					
Way of Installation	<div><div><div>↑</div><div>↑</div><div>↑</div><div>↑</div></div>Monolithic</div> or <div><div><div>↑</div><div>→</div><div>→</div><div>↑</div></div>Quarter Turn</div>						
Recommended Adhesive from TOLI	TOLI ECO GA Cement		(required quantity)		for steel or plastic sub-floor	40 to 60 gram/m <sup>2</sup>	
	TOLI ECO GA Cement EX				for mortar and wood sub-floor	60 to 100 gram/m <sup>2</sup>	
Notes on Installation	Apply the adhesive on the whole surface of the sub-floor thinly and evenly. After drying, when the adhesive becomes translucent, install the tiles. Be careful not to put the tiles too tightly.						
Others	♦Occasionally the direction of cut-piles are partly broken in part, which looks like color shading. This is one of the characteristics of cut-pile carpets and not a manufacturing defect. ♦Please note that the product has the indigenous odor from its materials.						

MADE IN JAPAN



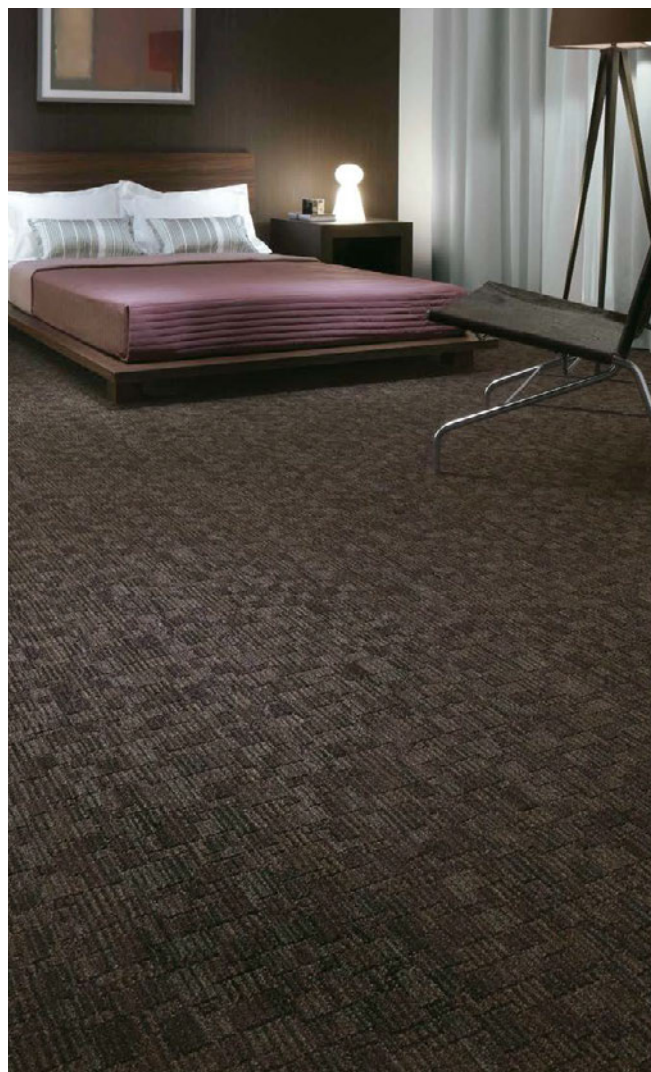
GX8301



GX8301



GX8302



GX8302



# NOCTURE <GX-8400>

category: carpet tile

Delicate texture is created by twisting different types of yarns. On the top of it, beautiful wavy pattern is overlapped.



Long Life



Composition	surface		BCF Nylon 100%		dyeing method of yarn		Solution Dyed				
	base fabric		Nonwoven Polyester		backing		PVC and Glass Fiber				
Specification	size		500mm×500mm		overall thickness		8.5mm				
	pile height		H 6.0mm / L 4.5mm (cut and loop pile)								
	gauge		1/10		stitch		12.0		yarn weight (oz/sq.yd)		29.5

Packing	16pcs/box = 4m <sup>2</sup> /box		Dimension	W 530mm × L 515mm × H 145mm	
Net Weight	20.2kg/box				
Performance	Critical Radiant Flux	(ASTM E648)	Class 1 Average CRF 0.45/cm <sup>2</sup> or higher		
	Smoke Density	(ASTM E662)	Less than 450		
	Flame-retardant	Fire Defense Law in Japan Authorized No.E2150032			
	Antistatic	Less than 1.0kV (JIS L 1021-16, at 23 degrees centigrade, 25%RH)			
	Stain-resistant	Stain Release			
	Formaldehyde Radiation	F☆☆☆☆ Interior-fabrics Performance Evaluation Conference Certified No.J15-31028			
Way of Installation	<div><div><div>↑</div><div>↑</div><div>↑</div><div>↑</div></div>Monolithic</div> or <div><div><div>↑</div><div>→</div><div>→</div><div>↑</div></div>Quarter Turn</div>				
Recommended Adhesive from TOLI	TOLI ECO GA Cement		for steel or plastic sub-floor		40 to 60 gram/m <sup>2</sup>
	TOLI ECO GA Cement EX		for mortar and wood sub-floor		60 to 100 gram/m <sup>2</sup>
Notes on Installation	Apply the adhesive on the whole surface of the sub-floor thinly and evenly. After drying, when the adhesive becomes translucent, install the tiles. Be careful not to put the tiles too tightly.				
Others	♦Occasionally the direction of cut-piles are partly broken in part, which looks like color shading. This is one of the characteristics of cut-pile carpets and not a manufacturing defect. ♦The position of wavy lines differs on a tile-by-tile basis. In case you do not feel comfortable about the floor after installation, please change the tiles partly so that it will look natural. ♦Right after installation, the joints of the tiles could be outstanding. This will be recovered as the passage of time. ♦Please note that the product has the indigenous odor from its materials.				

MADE IN JAPAN



GX8401



GX8401



GX8404



▲ GX8401