

FLOORLEUM PLAIN NW

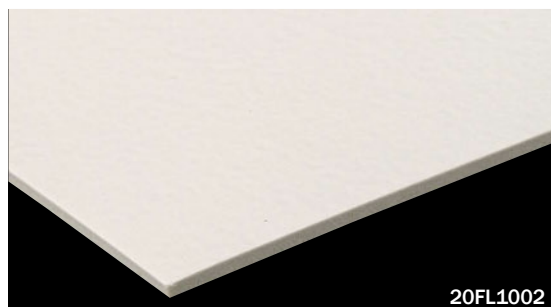
category: low-maintenance vinyl sheet

FLOORLEUM advanced to NW finish. Beautiful plain-colored vinyl sheet with a shiny surface.



Specification	overall thickness		2.0mm/2.5mm	width×length	1820mm×9m
	others		Antibacterial & Antivirus Finished / Highly Durable UV-Coated Surface		
JIS Registered No.	No. GB0506143 GB0610001 (JIS A 5705 Vinyl Sheet Flooring)				
Packing	9m/roll				
Net Weight	50.8kg/roll (2.0mm) 63.9kg/roll (2.5mm)				
Recommended Adhesive from TOLI	dried mortar and concrete		Eco Royal Cement, Eco AR600		
	humid mortar and concrete		Epo Gray ST, US Cement, US Cement (less-smelly), US200		
	TOLI UNDERLAY SHEET		US Cement, US Cement (less-smelly), US200		
Welding/Seam Finish	◆Welding rod for heat-welding is available on a color-by-color basis. ◆JOINT SHIELD method (JS Method) by TOLI JOINT SHIELD is also applicable.				
Notes on Installation	◆Seams should be heat-welded or finished with TOLI JOINT SHIELD. ◆TOLI JOINT SHIELD can also work on the top of TOLI UNDERLAY SHEET, but when partial weight will be put on the floor (such as heavy stuff or casters), the seam joints should not be finished with TOLI JOINT SHIELD. ◆When you install 2 different sheets, each edge should be jointed at the seam. (Do not cut in the middle of the sheet.) ◆For one week after installation, direct sunlight, sudden change of temperature due to air conditioning, and water washing should be avoided. ◆Please do not use the urethane adhesive other than US Cement, US Cement (less-smelly), US200. ◆As the sub-floor material, the underlayment like TOLI UNDERLAY SHEET (page 297) is also workable. Apply the same adhesive for both upside and downside of the underlayment. Please note that the durability to dynamic load will be degraded when you install with the underlayment. ◆When you install the sheet in the places where rollaway beds are used (e.g. a patient room of the hospital, a living room of the welfare facility and so forth), the epoxy adhesive such as TOLI Epo Gray ST or TOLI Epo Gray S and urethane adhesive such as US Cement, US Cement (less-smelly), US200 should be used even if the humidity of the sub-floor is less than 8%.				
Recommended Way of Maintenance from TOLI	◆No need to apply the maintenance wax on the surface. Clean the floor every day with an auto scrubber or a wet rag wrung out tightly. Use the detergent for fixed contamination. ◆Even if the wax is applied on the surface, it does not affect the quality of NW series. ◆For a large facility, an abstergent auto scrubber is more recommendable. ◆High speed buffing should be avoided. Otherwise highly durable UV coating will be abraded.				
Others	◆At the entrance of the building, the dust control mat should be laid in order to avoid soils and sands from outside. ◆To prepare the floor which is durable to rolling loads, please fully check the combination of the sheet and the sub-floor, the adhesive, and the loads. For instance, when the sub-floor is too weak, the sheet might be destroyed from underneath. ◆Please be aware that some rubber casters might cause color-contamination. ◆Please note that the product has the indigenous odor from its materials.				

MADE IN JAPAN

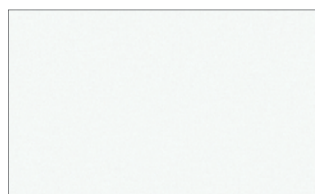


20FL1002

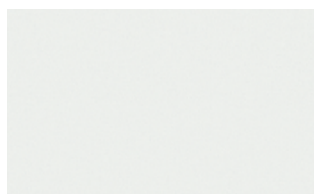
◆ **Antibacterial Performance** <in accordance with JIS Z 2801>
In JIS testing criteria, when the value is more than 2.0, the product has sufficient antibacterial property.

	Escherichia Coli	Staphylococcus Aureus	MRSA
FLOORLEUM PLAIN NW	More than 2.0	More than 2.0	More than 2.0

Conducted by KAKEN TEST CENTER



20FL1001 (2.0mm)
25FL1001 (2.5mm) made-to-order



20FL1002 (2.0mm)
25FL1002 (2.5mm)



20FL1003 (2.0mm)
25FL1003 (2.5mm)



20FL1004 (2.0mm)
25FL1004 (2.5mm)



20FL1008 (2.0mm)
25FL1008 (2.5mm)



20FL1009 (2.0mm)
25FL1009 (2.5mm)



20FL1010 (2.0mm)
25FL1010 (2.5mm)



20FL1011 (2.0mm)
25FL1011 (2.5mm) made-to-order

FLOORLEUM PLAIN NW

category: low-maintenance vinyl sheet



**Recycle
Long Life**



**Weight Saving
Easy Maintenance**



▲ 20FL1006/20FL1016



20FL1014 (2.0mm)
25FL1014 (2.5mm) made-to-order



20FL1015 (2.0mm)
25FL1015 (2.5mm) made-to-order



20FL1016 (2.0mm)
25FL1016 (2.5mm) made-to-order



20FL1017 (2.0mm)
25FL1017 (2.5mm) made-to-order



20FL1005 (2.0mm)
25FL1005 (2.5mm) made-to-order



20FL1006 (2.0mm)
25FL1006 (2.5mm) made-to-order



20FL1007 (2.0mm)
25FL1007 (2.5mm) made-to-order



20FL1012 (2.0mm)
25FL1012 (2.5mm) made-to-order



20FL1013 (2.0mm)
25FL1013 (2.5mm) made-to-order

Vinyl
Sheet

FLOORLEUM MARBLE NW

category: low-maintenance vinyl sheet

FLOORLEUM advanced to NW finish. Simple and soft imaged vinyl sheet with a marble pattern.



Specification	overall thickness	2.0mm/2.5mm	width×length	1820mm×9m
	others	Antibacterial & Antivirus Finished / Highly Durable UV-Coated Surface		
JIS Registered No.	No. GB0506143 GB0610001 (JIS A 5705 Vinyl Sheet Flooring)			
Packing	9m/roll			
Net Weight	50.8kg/roll (2.0mm) 63.9kg/roll (2.5mm)			
Recommended Adhesive from TOLI	dried mortar and concrete	Eco Royal Cement, Eco AR600		
	humid mortar and concrete	Epo Gray ST, US Cement, US Cement (less-smelly), US200		
	TOLI UNDERLAY SHEET	US Cement, US Cement (less-smelly), US200		
Welding/Seam Finish	♣Welding rod for heat-welding is available on a color-by-color basis. ♣JOINT SHIELD method (JS Method) by TOLI JOINT SHIELD is also applicable.			
Notes on Installation	See page 272.			
Recommended Way of Maintenance from TOLI	See page 272.			
Others	See page 272.			

MADE IN JAPAN

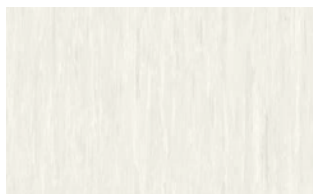


20FL1503

◆ **Antibacterial Performance** <in accordance with JIS Z 2801>
In JIS testing criteria, when the value is more than 2.0, the product has sufficient antibacterial property.

	Escherichia Coli	Staphylococcus Aureus	MRSA
FLOORLEUM MARBLE NW	More than 2.0	More than 2.0	More than 2.0

Conducted by KAKEN TEST CENTER



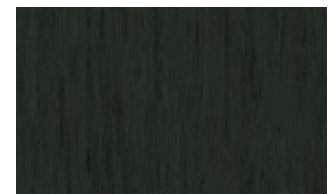
20FL1501 (2.0mm)
25FL1501 (2.5mm)



20FL1502 (2.0mm)
25FL1502 (2.5mm) made-to-order



20FL1503 (2.0mm)
25FL1503 (2.5mm) made-to-order



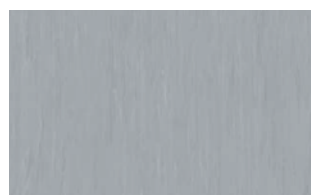
20FL1508 (2.0mm)
25FL1508 (2.5mm) made-to-order



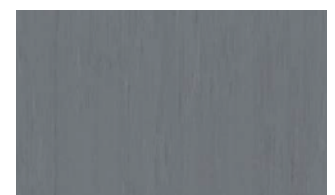
20FL1504 (2.0mm)
25FL1504 (2.5mm) made-to-order



20FL1505 (2.0mm)
25FL1505 (2.5mm)



20FL1506 (2.0mm)
25FL1506 (2.5mm)



20FL1507 (2.0mm)
25FL1507 (2.5mm)



20FL1509 (2.0mm)
25FL1509 (2.5mm) made-to-order



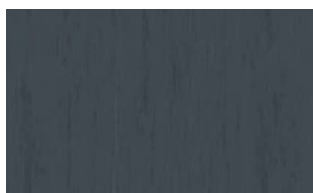
20FL1510 (2.0mm)
25FL1510 (2.5mm) made-to-order



20FL1511 (2.0mm)
25FL1511 (2.5mm) made-to-order



20FL1512 (2.0mm)
25FL1512 (2.5mm) made-to-order



20FL1513 (2.0mm)
25FL1513 (2.5mm) made-to-order



20FL1514 (2.0mm)
25FL1514 (2.5mm)



20FL1515 (2.0mm)
25FL1515 (2.5mm)



20FL1516 (2.0mm)
25FL1516 (2.5mm)

FLOORLEUM MARBLE NW

category: low-maintenance vinyl sheet



20FL1517 (2.0mm)
25FL1517 (2.5mm) made-to-order



20FL1518 (2.0mm)
25FL1518 (2.5mm) made-to-order



20FL1519 (2.0mm)
25FL1519 (2.5mm)



20FL1520 (2.0mm)
25FL1520 (2.5mm) made-to-order



20FL1521 (2.0mm)
25FL1521 (2.5mm)



20FL1522 (2.0mm)
25FL1522 (2.5mm) made-to-order



20FL1523 (2.0mm)
25FL1523 (2.5mm) made-to-order



20FL1524 (2.0mm)
25FL1524 (2.5mm)



20FL1525 (2.0mm)
25FL1525 (2.5mm)



20FL1526 (2.0mm)
25FL1526 (2.5mm) made-to-order



20FL1527 (2.0mm)
25FL1527 (2.5mm) made-to-order



20FL1528 (2.0mm)
25FL1528 (2.5mm) made-to-order



20FL1529 (2.0mm)
25FL1529 (2.5mm)



20FL1530 (2.0mm)
25FL1530 (2.5mm) made-to-order



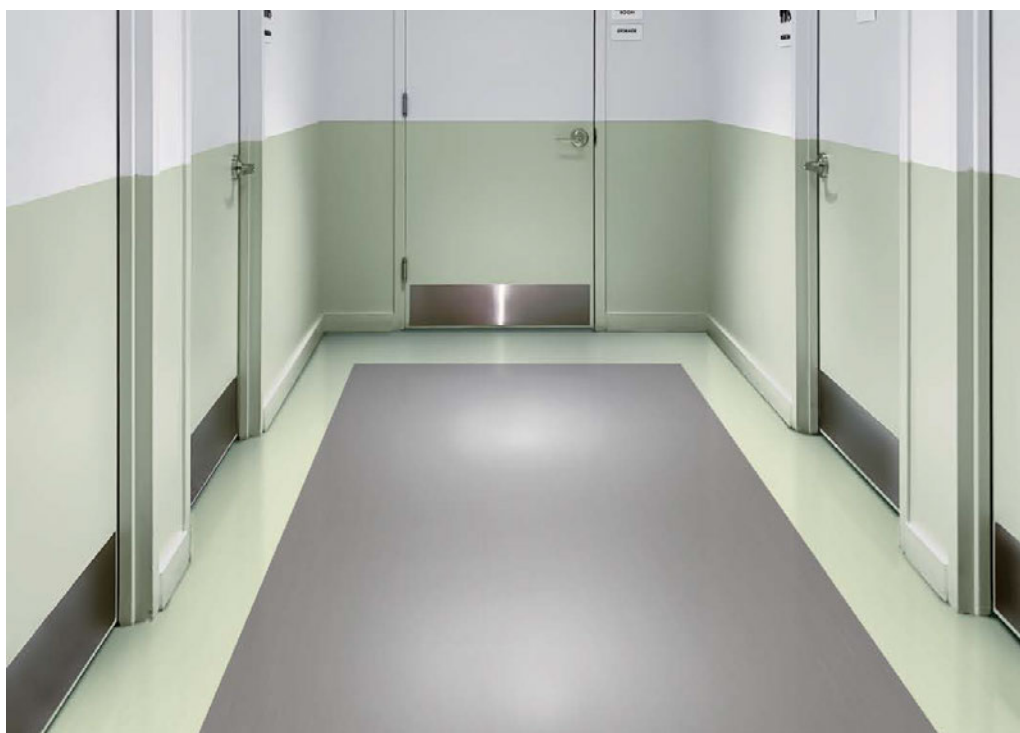
20FL1531 (2.0mm)
25FL1531 (2.5mm)



20FL1532 (2.0mm)
25FL1532 (2.5mm) made-to-order



20FL1533 (2.0mm)
25FL1533 (2.5mm) made-to-order



▲ 20FL1511/20FL1521

Vinyl
Sheet

FLOORLEUM SOILUD NW

category: low-maintenance vinyl sheet

“SOILUD NW” has a sharper design in the motif of kneaded soil.



Specification	overall thickness		2.0mm	width×length	1820mm×9m
	others		Antibacterial & Antivirus Finished / Highly Durable UV-Coated Surface		
JIS Registered No.	No. GB0506143 (JIS A 5705 Vinyl Sheet Flooring)				
Packing	9m/roll				
Net Weight	48.0kg/roll				
Recommended Adhesive from TOLI	dried mortar and concrete		Eco Royal Cement, Eco AR600		
	humid mortar and concrete		Epo Gray ST, US Cement, US Cement (less-smelly), US200		
	TOLI UNDERLAY SHEET		US Cement, US Cement (less-smelly), US200		
Welding/Seam Finish	✦Welding rod for heat-welding is available on a color-by-color basis. ✦JOINT SHIELD method (JS Method) by TOLI JOINT SHIELD is also applicable.				
Notes on Installation	See page 272.				
Recommended Way of Maintenance from TOLI	See page 272.				
Others	See page 272.				

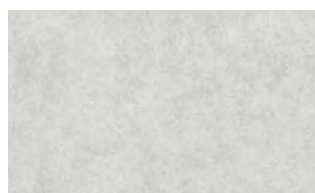
MADE IN JAPAN



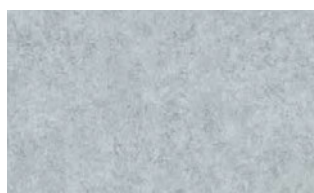
◆ **Antibacterial Performance** <in accordance with JIS Z 2801>
In JIS testing criteria, when the value is more than 2.0, the product has sufficient antibacterial property.

	Escherichia Coli	Staphylococcus Aureus	MRSA
FLOORLEUM SOILUD NW	More than 2.0	More than 2.0	More than 2.0

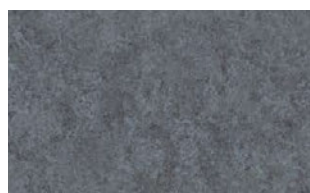
Conducted by KAKEN TEST CENTER



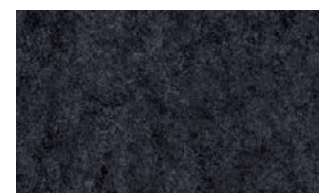
20FL621



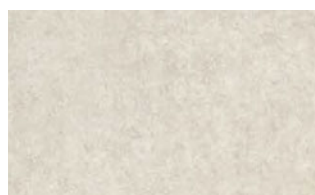
20FL622



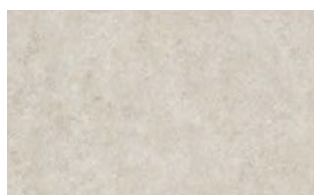
20FL623



20FL624



20FL625



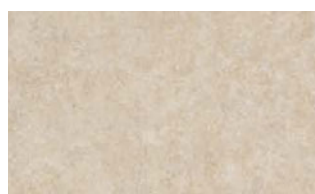
20FL626



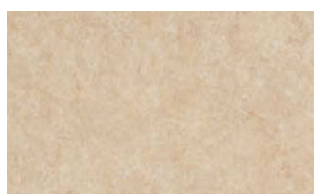
20FL627



20FL628



20FL629



20FL630



20FL633



20FL635



20FL631



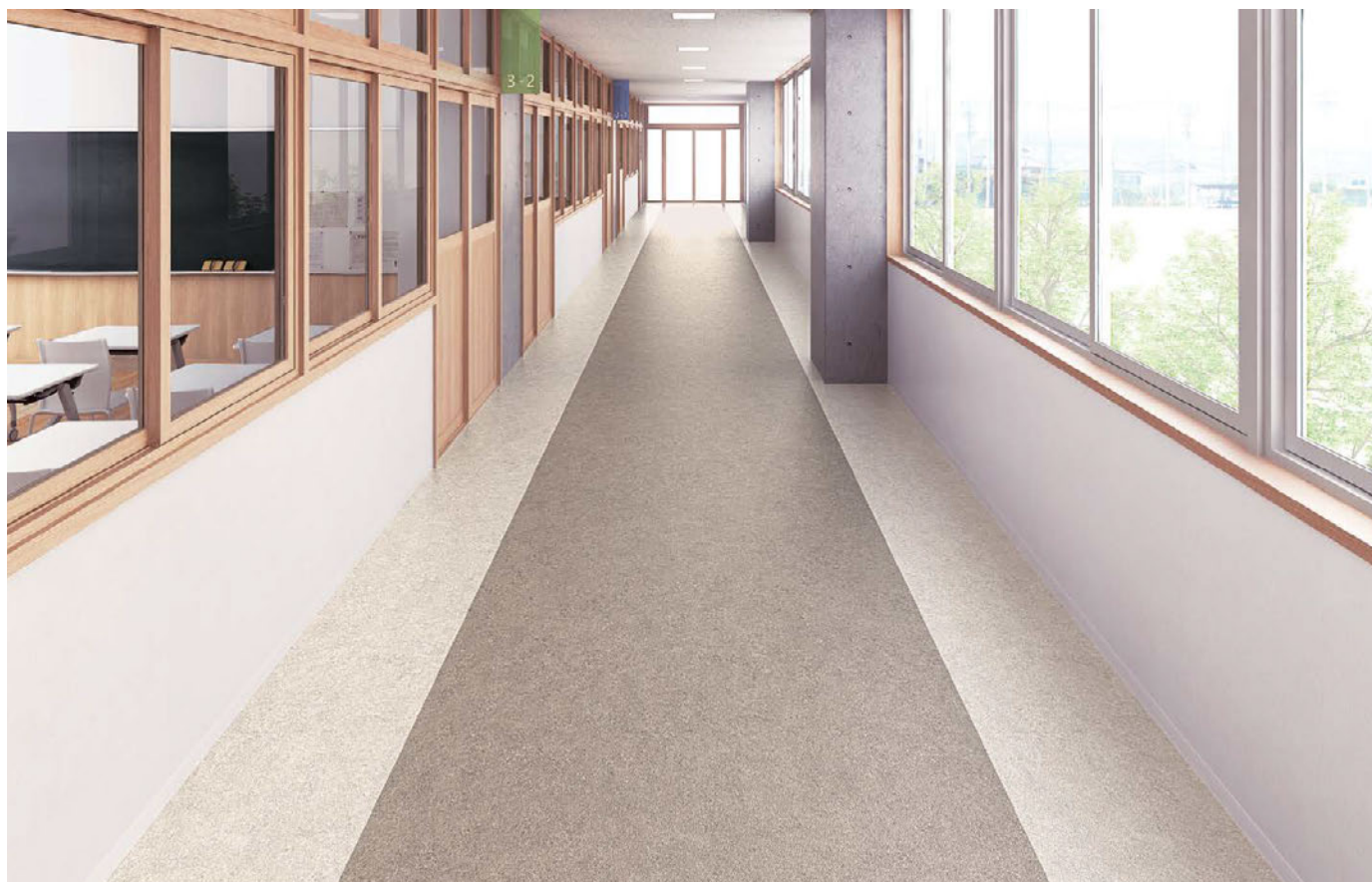
20FL632



20FL634

FLOORLEUM SOILUD NW

category: low-maintenance vinyl sheet



Vinyl
Sheet

▲ 20FL625/20FL627



▲ 20FL631/20FL305 (FLOORLEUM NATTY - page 282)



▲ 20FL625

FLOORLEUM WOOD NW

category: low-maintenance vinyl sheet

■ "WOOD NW" with an authentic wood image



Specification	overall thickness	2.0mm	width×length	1820mm×9m
	others	Antibacterial & Antivirus Finished / Highly Durable UV-Coated Surface		
JIS Registered No.	No. GB0506143 (JIS A 5705 Vinyl Sheet Flooring)			
Packing	9m/roll			
Net Weight	48.0kg/roll			
Recommended Adhesive from TOLI	dried mortar and concrete	Eco Royal Cement, Eco AR600		
	humid mortar and concrete	Epo Gray ST, US Cement, US Cement (less-smelly), US200		
	TOLI UNDERLAY SHEET	US Cement, US Cement (less-smelly), US200		
Welding/Seam Finish	◆Welding rod for heat-welding is available on a color-by-color basis. ◆JOINT SHIELD method (JS Method) by TOLI JOINT SHIELD is also applicable.			
Notes on Installation	See page 272.			
Recommended Way of Maintenance from TOLI	See page 272.			
Others	See page 272.			

MADE IN JAPAN



20FL452

◆ **Antibacterial Performance** <in accordance with JIS Z 2801>
In JIS testing criteria, when the value is more than 2.0, the product has sufficient antibacterial property.

	Escherichia Coli	Staphylococcus Aureus	MRSA
FLOORLEUM WOOD NW	More than 2.0	More than 2.0	More than 2.0

Conducted by KAKEN TEST CENTER



20FL451



20FL452



20FL453



20FL454



20FL455



20FL456



▲ 20FL801 (FLOORLEUM MORTAR NW · page 279)/20FL452

FLOORLEUM MORTAR NW

category: low-maintenance vinyl sheet

"MORTAR NW" with a concrete-look image has a moderate color contrast that can work well in any application.



Specification	overall thickness	2.0mm	width×length	1820mm×9m
	others	Antibacterial & Antivirus Finished / Highly Durable UV-Coated Surface		
JIS Registered No.	No. GB0506143 (JIS A 5705 Vinyl Sheet Flooring)			
Packing	9m/roll			
Net Weight	48.0kg/roll			
Recommended Adhesive from TOLI	dried mortar and concrete	Eco Royal Cement, Eco AR600		
	humid mortar and concrete	Epo Gray ST, US Cement, US Cement (less-smelly), US200		
	TOLI UNDERLAY SHEET	US Cement, US Cement (less-smelly), US200		
Welding/Seam Finish	♣Welding rod for heat-welding is available on a color-by-color basis. ♣JOINT SHIELD method (JS Method) by TOLI JOINT SHIELD is also applicable.			
Notes on Installation	See page 272.			
Recommended Way of Maintenance from TOLI	See page 272.			
Others	See page 272.			

MADE IN JAPAN

Vinyl Sheet

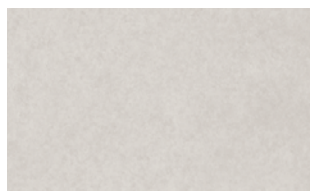
◆ **Antibacterial Performance** <in accordance with JIS Z 2801>
In JIS testing criteria, when the value is more than 2.0, the product has sufficient antibacterial property.

	Escherichia Coli	Staphylococcus Aureus	MRSA
FLOORLEUM MORTAR NW	More than 2.0	More than 2.0	More than 2.0

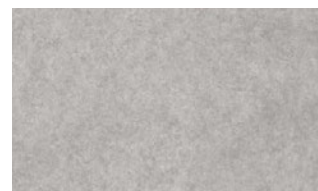
Conducted by KAKEN TEST CENTER



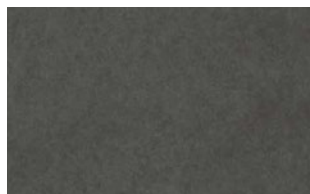
▲ 20FL802/20FL801



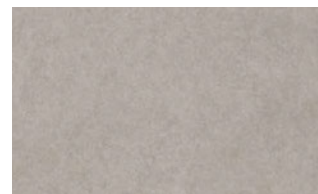
20FL801



20FL802



20FL803



20FL804

FLOORLEUM FLAKE NW

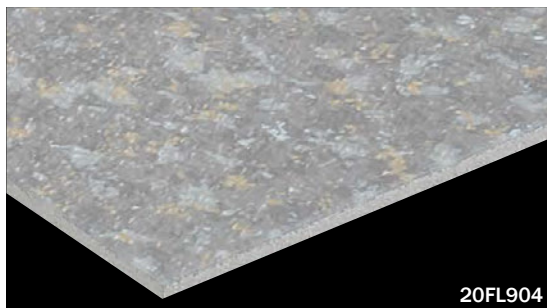
category: low-maintenance vinyl sheet

Various sizes of beautiful chip patterns are overlapped in "FLAKE NW".



Specification	overall thickness		2.0mm	width×length	1820mm×9m
	others		Antibacterial & Antivirus Finished / Highly Durable UV-Coated Surface		
JIS Registered No.	No. GB0506143 (JIS A 5705 Vinyl Sheet Flooring)				
Packing	9m/roll				
Net Weight	48.0kg/roll				
Recommended Adhesive from TOLI	dried mortar and concrete	Eco Royal Cement, Eco AR600			
	humid mortar and concrete	Epo Gray ST, US Cement, US Cement (less-smelly), US200			
	TOLI UNDERLAY SHEET	US Cement, US Cement (less-smelly), US200			
Welding/Seam Finish	◆Welding rod for heat-welding is available on a color-by-color basis. ◆JOINT SHIELD method (JS Method) by TOLI JOINT SHIELD is also applicable.				
Notes on Installation	See page 272.				
Recommended Way of Maintenance from TOLI	See page 272.				
Others	See page 272.				

MADE IN JAPAN



20FL904

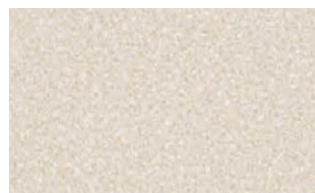
◆ **Antibacterial Performance** <in accordance with JIS Z 2801>
In JIS testing criteria, when the value is more than 2.0, the product has sufficient antibacterial property.

	Escherichia Coli	Staphylococcus Aureus	MRSA
FLOORLEUM FLAKE NW	More than 2.0	More than 2.0	More than 2.0

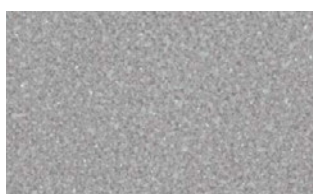
Conducted by KAKEN TEST CENTER



20FL903



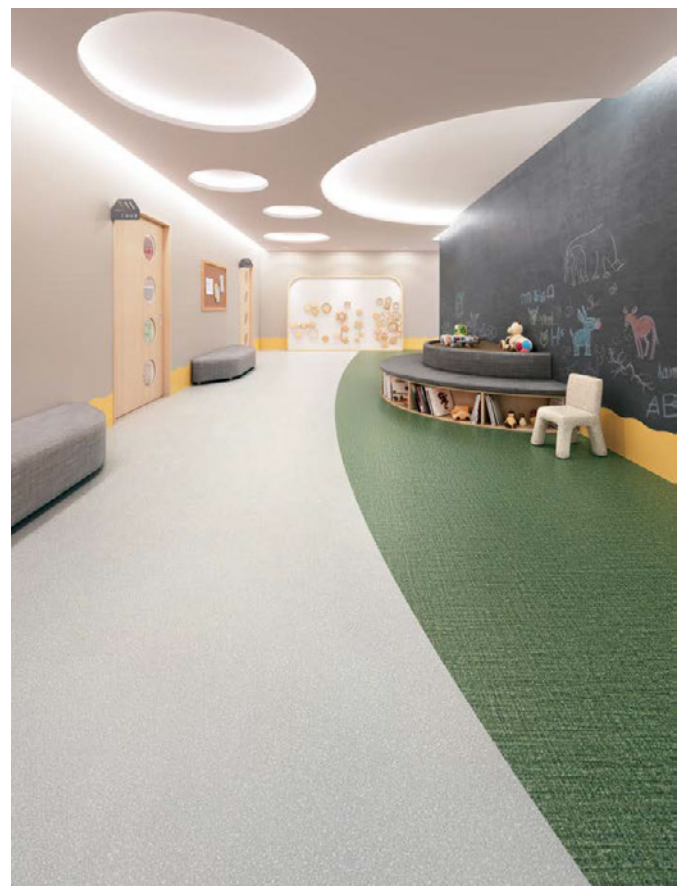
20FL908



20FL904



20FL906



▲ 20FL903/20FL749 (FLOORLEUM LATTICE NW · page 281)

FLOORLEUM LATTICE NW

category: low-maintenance vinyl sheet

■ “LATTICE NW” has a classy and soft woven lattice pattern.



Specification	overall thickness	2.0mm	width×length	1820mm×9m
	others	Antibacterial & Antivirus Finished / Highly Durable UV-Coated Surface		
JIS Registered No.	No. GB0506143 (JIS A 5705 Vinyl Sheet Flooring)			
Packing	9m/roll			
Net Weight	48.0kg/roll			
Recommended Adhesive from TOLI	dried mortar and concrete	Eco Royal Cement, Eco AR600		
	humid mortar and concrete	Epo Gray ST, US Cement, US Cement (less-smelly), US200		
	TOLI UNDERLAY SHEET	US Cement, US Cement (less-smelly), US200		
Welding/Seam Finish	♣Welding rod for heat-welding is available on a color-by-color basis. ♣JOINT SHIELD method (JS Method) by TOLI JOINT SHIELD is also applicable.			
Notes on Installation	See page 272.			
Recommended Way of Maintenance from TOLI	See page 272.			
Others	See page 272.			

MADE IN JAPAN



20FL741



20FL742



20FL743



20FL744



20FL745



20FL746



20FL747



20FL748



20FL749



20FL750



20FL746



▲ 20FL750/20FL747

◆ **Antibacterial Performance** <in accordance with JIS Z 2801>
In JIS testing criteria, when the value is more than 2.0, the product has sufficient antibacterial property.

	Escherichia Coli	Staphylococcus Aureus	MRSA
FLOORLEUM LATTICE NW	More than 2.0	More than 2.0	More than 2.0

Conducted by KAKEN TEST CENTER

Vinyl Sheet

FLOORLEUM NATTY NW

category: low-maintenance vinyl sheet

Flown pattern of "NATTY NW" has the authentic image of fine wood-grains.



Specification	overall thickness	2.0mm	width×length	1820mm×9m
	others	Antibacterial & Antivirus Finished / Highly Durable UV-Coated Surface		
JIS Registered No.	No. GB0506143 (JIS A 5705 Vinyl Sheet Flooring)			
Packing	9m/roll			
Net Weight	48.0kg/roll			
Recommended Adhesive from TOLI	dried mortar and concrete	Eco Royal Cement, Eco AR600		
	humid mortar and concrete	Epo Gray ST, US Cement, US Cement (less-smelly), US200		
	TOLI UNDERLAY SHEET	US Cement, US Cement (less-smelly), US200		
Welding/Seam Finish	◆Welding rod for heat-welding is available on a color-by-color basis. ◆JOINT SHIELD method (JS Method) by TOLI JOINT SHIELD is also applicable.			
Notes on Installation	See page 272.			
Recommended Way of Maintenance from TOLI	See page 272.			
Others	See page 272.			

MADE IN JAPAN



◆ **Antibacterial Performance** <in accordance with JIS Z 2801>
In JIS testing criteria, when the value is more than 2.0, the product has sufficient antibacterial property.

	Escherichia Coli	Staphylococcus Aureus	MRSA
FLOORLEUM NATTY NW	More than 2.0	More than 2.0	More than 2.0

Conducted by KAKEN TEST CENTER



▲ 20FL303/20FL908 (FLOORLEUM FLAKE NW · page 280)



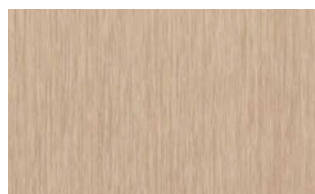
20FL301



20FL303



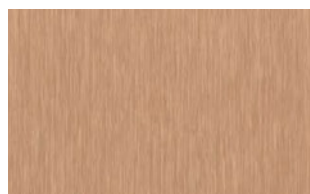
20FL308



20FL305



20FL306



20FL307