

TOLI BATHNA SERIES (page 342 to 345)

For more safe and comfortable bathrooms

TOLI Bathna Series is the vinyl flooring product designed for bathrooms and public baths. Applicable not only for the renovation of existing residential bathrooms, but for any size and kind of bathrooms in hospitals, welfare facilities, hotels, sports clubs, and so forth.



keep it clean

special resin embossing + Bathna Hydro Coat

easy to clean

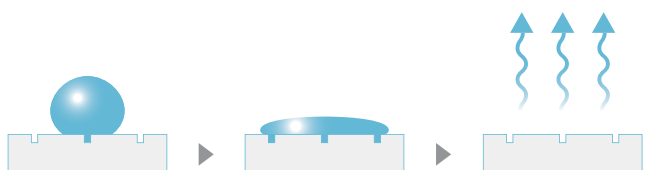


without Bathna Hydro Coat

Bathna Hydro Coat finished

By the combination of special embossing and TOLI's original Bathna Hydro Coat, stains can be easily removed. The clean surface will be kept for long.

dry quickly



By the combination of special embossing and TOLI's original Bathna Hydro Coat, waterdrops on the surface can spread out thinly so that the floor will dry quickly.

hard to be scratched

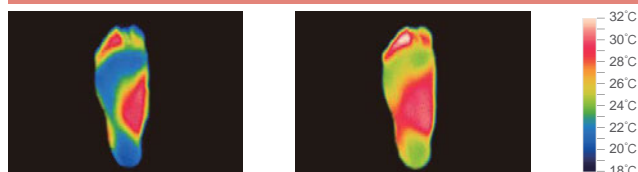


The surface strength provides the resistance to dragging of chairs and falling down of shower heads. This can prevent the floor from damages so that it will last long.

safe and comfortable

heat insulating cushion-backed layer

for reduction of heat shock



regular ceramic tile

BATHNA FLORE

※All the data are actual test result and not guaranteed values.

With its excellent heat insulating performance, you cannot feel cold even when you stand barefoot on it. This will decrease the risk of heat shock in winter.

soft & non-slippery

two-stage approach to safety



Surface embossing and proper dent by cushion-backing will grip your barefoot and prevent from falling down. It also has great shock-absorbing capability in case you fall down.

comfortable texture



With its cushion-backed soft texture to your skin, you will have less pain even when getting down on your knees for caregiving.

◆ Slip Resistance <in accordance with JIS A 1454 (OY-PULL method), barefoot>

	C.S.R.B value	
	wet	0.3% soapy water
2.0mm vinyl sheet	0.74	0.63
BATHNA ARTI	1.11	0.84
BATHNA FLORE	1.22	0.96
BATHNA REALDESIGN (BNR3101 to 3104)	0.93	0.71
BATHNA REALDESIGN (BNR3201 to 3402)	1.17	0.86

■Corresponding Color Table of the Sealer "BATHNA SEAL SS"

BATHNA FLORE	BATHNA ARTI	BATHNA SEAL SS	
		BATHNA FLORE	BATHNA ARTI
BNF1101	BNA2101	BNSL1101	BNSL2101
BNF1102	BNA2102	BNSL1102	BNSL2102
BNF1103	BNA2103	BNSL1103	BNSL2103
BNF1104	—	BNSL1104	—
BATHNA REALDESIGN			
BNR3101		BNSL3101	
BNR3102		BNSL3102	
BNR3103		BNSL3103	
BNR3104		BNSL3104	
BNR3201		BNSL3201	
BNR3202		BNSL3202	
BNR3301		BNSL3301	
BNR3302		BNSL3302	
BNR3401		BNSL3401	
BNR3402		BNSL3402	

BATHNA ARTI

category: vinyl sheet with cushion backing

BATHNA ARTI is the vinyl sheet designed for bath rooms. It has the surface for smooth caster-running, and also keeps the comfortable temperature to avoid the heat shock. Very much suitable for handicapped bathrooms.

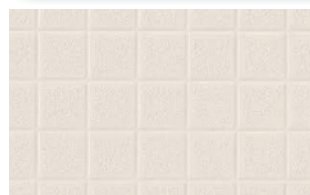


Specification	overall thickness		2.8mm	width×length	1820mm×9m
	others		Antibacterial & Antimildew Finished		
JIS Registered No.	No. GB0507188 (JIS A 5705 Vinyl Sheet Flooring)				
Packing	9m/roll				
Net Weight	40.6kg/roll				
Performance	flame-retardant	Fire Defense Law in Japan Authorized NO.E2230249			
Recommended Applications	bathrooms				
Recommended Adhesive from TOLI	humid mortar and concrete	Bathna Cement EPO (mildew-proofing)			
Welding	Welding rod for heat-welding (antibacterial and mildew-proofing finished) is available on a color-by-color basis. For walls and ends, please finish with the antibacterial and mildew-proofing seam sealer TOLI Bathna Seal SS.				
Notes on Installation	♦Seams should be heat-welded or finished with a seam sealing bond. ♦When you install 2 different sheets, each edge should be jointed at the seam. (Do not cut in the middle of the sheet.) ♦When you install this product on the existing floor of bath rooms, in case the joints of exiting floor have more than 10mm width and 1mm depth, they should be leveled before installation. ♦After the installation is completed, one night of acclimation is required before you take a bath. Brush cleaning on the sealed part and using casters within a big bath room should be avoided for 2 to 3 days after installation. ♦Walls and ends should be finished with the seam sealer TOLI Bathna Seal SS. ♦Please bear in mind that the surface of the vinyl sheet might be whitened if the bath room cannot be in dry condition through the day. In case the color is changed, dry out sufficiently so that it will entirely recover. ♦In case the sub-floor is not flat, or it does not have a needful inclination (1/100 to 3/100), water drainage (drying) function might not be performed sufficiently.				
Recommended Maintenance Wax from TOLI	No need to apply the maintenance wax on the surface. As a daily maintenance, remove the dirt with a sponge or a brush.				
Others	♦BATHNA ARTI is a vinyl sheet for indoor use. Please avoid the installation in outdoors or semi-outdoors where the floor is exposed to direct sunlight. ♦Please bear in mind that surface embossing cannot always match on the joints. ♦BATHNA ARTI could be contaminated by hair dyes or certain kind of dye stuff for towels. Please avoid using those dyes. In case it's contaminated, please wash it away immediately. ♦Please be aware that some rubber casters might cause color-contamination. ♦Please note that the product has the indigenous odor from its materials.				

MADE IN JAPAN



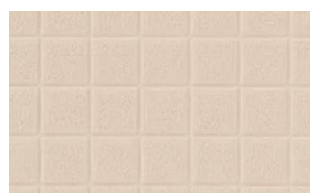
BNA2102



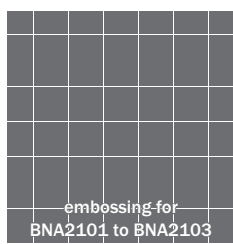
BNA2101



BNA2102



BNA2103



embossing for
BNA2101 to BNA2103
pattern repeat: approx. 1.9cm



▲ BNA2102

◆ Durability to Rolling Loads <in accordance with JIS A 1454: Caster Rilling Test>

	BATHNA ARTI	
Time until the floor covering swells	More than 180 minutes (1st stage test by wheels with 110mm Φ)	Less than 30 minutes (2nd stage test by wheels with 46mm Φ)

1st stage test: JIS A 1454: Caster Rilling Test (load per unit area: approx. 900N/cm²)
2nd stage test: Independent test by TOLI (load per unit area: approx. 2,700N/cm²)

BATHNA FLORE

category: vinyl sheet with cushion backing

BATHNA FLORE is the vinyl sheet for bath rooms with good shock absorption and comfortable temperature. Even when care workers bends on their knees, it does not give pains.



**GOOD
DESIGN**



Specification	overall thickness		3.5mm	width×length	1820mm×9m
	others		Antibacterial & Antimildew Finished		
JIS Registered No.	No. GB0507188 (JIS A 5705 Vinyl Sheet Flooring)				
Packing	9m/roll				
Net Weight	34.5kg/roll				
Performance	flame-retardant	Fire Defense Law in Japan Authorized NO.E2130297			
Recommended Applications	bathrooms				
Recommended Adhesive from TOLI	humid mortar and concrete	Bathna Cement EPO (mildew-proofing)			
Welding	Welding rod for heat-welding (antibacterial and mildew-proofing finished) is available on a color-by-color basis. For walls and ends, please finish with the antibacterial and mildew-proofing seam sealer TOLI Bathna Seal SS.				
Notes on Installation	♦Seams should be heat-welded or finished with a seam sealing bond. ♦When you install 2 different sheets, each edge should be jointed at the seam. (Do not cut in the middle of the sheet.) ♦When you install this product on the existing floor of bath rooms, in case the joints of exiting floor have more than 10mm width and 1mm depth, they should be leveled before installation. ♦After the installation is completed, one night of acclimation is required before you take a bath. Brush cleaning on the sealed part and using casters within a big bath room should be avoided for 2 to 3 days after installation. ♦Walls and ends should be finished with the seam sealer TOLI Bathna Seal SS. ♦Please bear in mind that the surface of the vinyl sheet might be whitened if the bath room cannot be in dry condition through the day. In case the color is changed, dry out sufficiently so that it will entirely recover. ♦In case the sub-floor is not flat, or it does not have a needful inclination (1/100 to 3/100), water drainage (drying) function might not be performed sufficiently.				
Recommended Maintenance Wax from TOLI	No need to apply the maintenance wax on the surface. As a daily maintenance, remove the dirt with a sponge or a brush.				
Others	♦BATHNA FLORE is a vinyl sheet for indoor use. Please avoid the installation in outdoors or semi-outdoors where the floor is exposed to direct sunlight. ♦Please bear in mind that surface embossing cannot always match on the joints. ♦BATHNA FLORE could be contaminated by hair dyes or certain kind of dye stuff for towels. Please avoid using those dyes. In case it's contaminated, please wash it away immediately. ♦Please be aware that some rubber casters might cause color-contamination. ♦Please note that the product has the indigenous odor from its materials.				

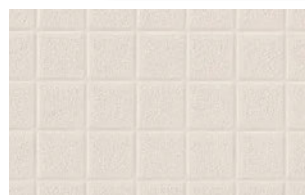
MADE IN JAPAN



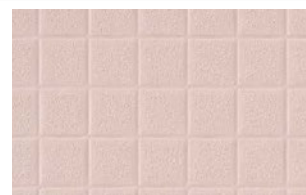
▲ BNF1101



BNF1103



BNF1101



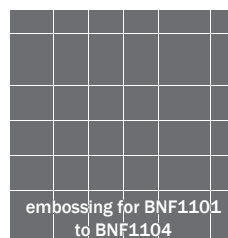
BNF1102



BNF1103



BNF1104



embossing for BNF1101
to BNF1104

pattern repeat: approx. 1.9cm

BATHNA REALDESIGN

category: vinyl sheet with cushion backing

Vinyl sheet designed for bathrooms to create a classy feeling in the bath. Characterized by its heat-shock resistance, non-slippery effect, good water drainage, and shock-absorption.



Specification	overall thickness		3.5mm	width×length	1820mm×9m
	others		Antibacterial & Antimildew Finished		
JIS Registered No.	No. GB0507188 (JIS A 5705 Vinyl Sheet Flooring)				
Packing	9m/roll				
Net Weight	31.9kg/roll				
Performance	flame-retardant	Fire Defense Law in Japan Authorized NO.E2230250			
Recommended Applications	bathrooms				
Recommended Adhesive from TOLI	humid mortar and concrete	Bathna Cement EPO (mildew-proofing)			
Welding	Welding rod for heat-welding (antibacterial and mildew-proofing finished) is available on a color-by-color basis. For walls and ends, please finish with the antibacterial and mildew-proofing seam sealer TOLI Bathna Seal SS.				
Notes on Installation	♦Seams should be heat-welded or finished with a seam sealing bond. ♦When you install 2 different sheets, each edge should be jointed at the seam. (Do not cut in the middle of the sheet.) ♦When you install this product on the existing floor of bath rooms, in case the joints of exiting floor have more than 10mm width and 1mm depth, they should be leveled before installation. ♦After the installation is completed, one night of acclimation is required before you take a bath. Brush cleaning on the sealed part and using casters within a big bath room should be avoided for 2 to 3 days after installation. ♦Walls and ends should be finished with the seam sealer TOLI Bathna Seal SS. ♦Please bear in mind that the surface of the vinyl sheet might be whitened if the bath room cannot be in dry condition through the day. In case the color is changed, dry out sufficiently so that it will entirely recover. ♦In case the sub-floor is not flat, or it does not have a needful inclination (1/100 to 3/100), water drainage (drying) function might not be performed sufficiently.				
Recommended Maintenance Wax from TOLI	No need to apply the maintenance wax on the surface. As a daily maintenance, remove the dirt with a sponge or a brush.				
Others	♦BATHNA REALDESIGN is a vinyl sheet for indoor use. Please avoid the installation in outdoors or semi-outdoors where the floor is exposed to direct sunlight. ♦Please bear in mind that surface embossing cannot always match on the joints. ♦BATHNA REALDESIGN could be contaminated by hair dyes or certain kind of dye stuff for towels. Please avoid using those dyes. In case it's contaminated, please wash it away immediately. ♦Please be aware that some rubber casters might cause color-contamination. ♦Please note that the product has the indigenous odor from its materials.				

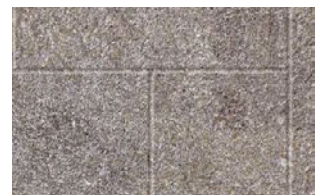
MADE IN JAPAN



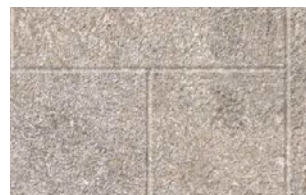
BNR3101



BNR3101



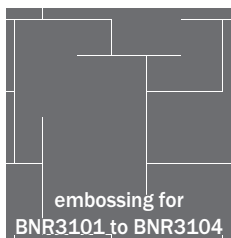
BNR3102



BNR3103



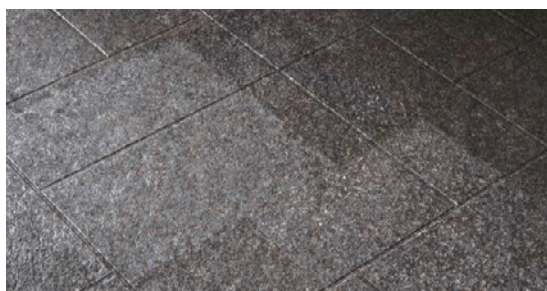
BNR3104



embossing repeat: approx. 47cm×45cm



pattern repeat: approx. 1.9cm



▲ BNR3101

BATHNA REALDESIGN

category: vinyl sheet with cushion backing



BNR3201



BNR3202



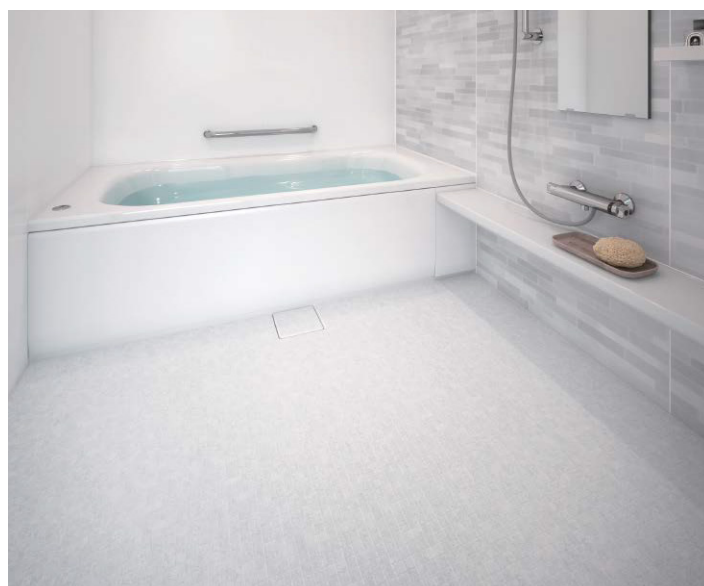
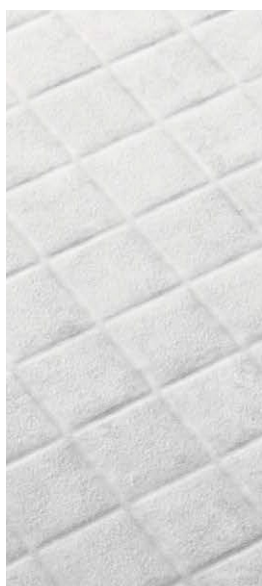
▲ BNR3201



BNR3301



BNR3302



▲ BNR3301



BNR3401



BNR3402



▲ BNR3402

Specialty
Flooring