

Podcast AI Audio Mixer | MicLIVE™ 6-CH UC8000

The MicLIVE 6-CH is the industry's first AI-optimized audio mixer for podcasting as it adopts SmartEQ technology to deliver acoustic enhancement for an optimized voice recording experience. Integrating audio mixing equipment into a compact stage box housing, this audio mixer offers up to 6-channel audio inputs, a built-in DSP and AD / DA converter, and it adds audio up to 24 bit / 96 kHz to any USB-C-enabled laptop or tablet.

To polish users' audio creation, the MicLIVE 6-CH features the capability of varying a user's voice with 24 Voice FX programs, SmartEQ, the jingle pads that can save up to 8 special audio effects, and the auto ducking function. In addition, it ships with a built-in preamp that provides gain for the microphone's signal, and a phantom power (+48V) power supply, which is suitable for connecting condenser microphones.

Apart from its easy-to-use, flexible hardware design, the MicLIVE 6-CH works with dedicated ATEN software, OnAir Audio, giving users complete control over every parameter while allowing them to simply assign audio from their computer, as well as edit the audio and customize sound effects through the intuitive interface.

Usually, broadcasting a live performance requires a team of professionals to assist with BGM or volume control, but thanks to the MicLIVE 6-CH, now just one user can create a pro-level broadcast. The MicLIVE 6-CH is an all-in-one solution tailor-made for podcasts, talk shows, livestreaming, worship, and music applications.

-  USB-C
-  OS Support
Win, Mac
-  Audio Mixer
-  Sample Rate
24 bit / 96 kHz

Front View

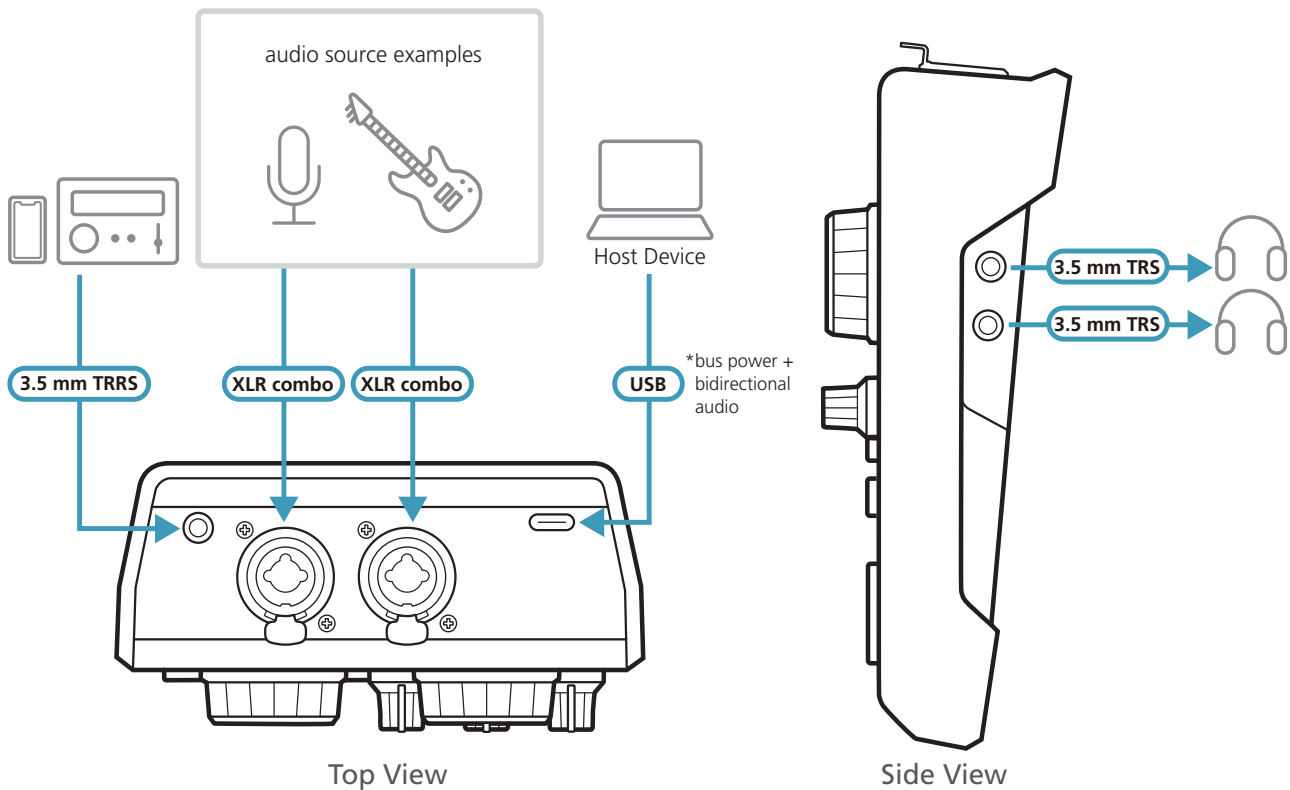


Rear View



Features

- All-in-one design simplifies audio mixing workflow for podcasting – offers up to 6-channel audio inputs, DSP and AD / DA converter, and adds audio up to 24-bit / 96 kHz to any USB-C-enabled laptop or tablet
- The industry's first AI-optimized audio mixer – enhances microphone audio quality with enhanced acoustic models, SmartEQ, so anyone can have a real-time, high-quality recording
- Jingle pads save up to 8 sound effects that can be customized from audio sources from a computer, microphone, and other audio inputs for a professional radio programming experience
- Contains 24 Voice FX programs, including 6 adjustments in reverb mode, 6 in pitch mode, and 12 in gender mode
- The auto ducking function lowers background music anytime one speaks, ensuring the speaker's voice is always heard, loud and clear, during broadcasting
- Diversified input interface options – supports audio media from professional XLR combo microphones, musical instruments, USB audio sources, and phone-in for mixing
- Built-in preamp that provides gain for instruments and the microphone's signal, and a phantom power supply that delivers reliable +48V phantom power for condenser microphones
- Intuitive OnAir Audio software gives users complete control over every parameter while allowing them to simply assign audio from their computers, as well as edit audio and customize sound effects through an intuitive interface



Specifications

MicLIVE™ 6-CH	
Audio Inputs	
Interfaces	XLR Combo: 2 x XLR-3-31(1:GND, 2:HOT, 3:COLD) or 6.3mm (1/4") standard TRS stereo jack (T:HOT (L) R: COLD (R), R:GND) Line-in: via 1/8" 4-pole TRRS phone female (T:HOT (L) R: COLD (R), R:GND, S: MIC. CTIA standard) USB Audio-in: via USB Type-C
Audio Outputs	
Interfaces	Line-out: via 1/8" 4-pole TRRS phone female (T:HOT (L) R: COLD (R), R:GND, S: MIC. CTIA standard) Headphone Monitoring: 2 x 1/8" TRS phone female (for headset) USB Audio-out: via USB Type-C
Audio Sampling	24-bit / 96 kHz
Connection	1x USB Type-C female, USB bus-powered
Microphone Inputs	
Frequency Response	20 Hz - 20 kHz
Dynamic Range	90 dB
THD+N	82 dB
Maximum Input Level	12.5 mVrms
Gain Range	40 dB (for Dynamic Microphone), 30 dB (for Condenser Microphone)
Impedance	3 K Ω (Typ)
Phantom power	+48 VDC
Instrument Inputs	
Frequency Response	20 Hz - 20 kHz
Dynamic Range	82 dB
THD+N	80 dB
Maximum Input Level	440 mVrms
Impedance	1 M Ω
Line Inputs	
Frequency Response	20 Hz - 20 kHz
Dynamic Range	95 dB
THD+N	90 dB
Maximum Input Level	1 Vrms
Impedance	2.5 K Ω (Typ)
Line Outputs	
Frequency Response	20Hz - 20 kHz
Maximum output Level	1 Vrms
Impedance	200 Ω
Headphone Outputs	
Frequency Response	20 Hz - 20 kHz
Maximum output Level	2 Vrms
Impedance	10 Ω
Digital Audio	
ADC Dynamic Range	92 dB (A-weighted)
DAC Dynamic Range	95 dB (A-weighted)
Maximum Input Level	+4 dBu

Environmental	
Operating Temperature	0 – 40 °C
Storage Temperature	-20 – 60 °C
Humidity	0 – 80% RH, Non-condensing
OS Support	<p>System requirements for PC and Mac:</p> <ul style="list-style-type: none"> • Intel i3-series 2 GHz multicore processor (or AMD , Apple M1 equivalent) or faster • 2 GB RAM (8 GB or more recommended) • USB-C interface with USB 3.0 or higher compatibility • Windows 10 or higher, macOS 10.11 or higher <p>System requirements for iPads:</p> <ul style="list-style-type: none"> • iPad Pro (3rd gen or later) • iPad Air (4th gen or later) • iPad Mini (6th gen or later) with USB-C interface • iPad Pro (1st and 2nd gen) • iPad (5th gen or later) • iPad Air (3rd gen) • iPad Mini (5th gen) with Phone Jack or adapter <p>OnAir Audio Software:</p> <ul style="list-style-type: none"> • Windows 10 or higher (64-bit only)
Power Consumption	DC5V:2.55W:12BTU
Physical Properties	
Housing	Plastic
Weight	0.42 kg
Dimensions (L x W x H)	13.05 x 18.09 x 6.27 cm

ATEN International Co., Ltd.

3F, No.125, Sec. 2, Datung Rd., Sijhih District., New Taipei City 221, Taiwan
 Phone: 886-2-8692-6789 Fax: 886-2-8692-6767
 www.aten.com E-mail: marketing@aten.com

Product information is subject to change without prior notice.

Released: 12/2021 V1.0

© Copyright 2021 ATEN® International Co. Ltd.
 ATEN and the ATEN logo are registered trademarks of ATEN International Co., Ltd.
 All rights reserved. All other trademarks are the property of their respective owners.

