

NEXIS



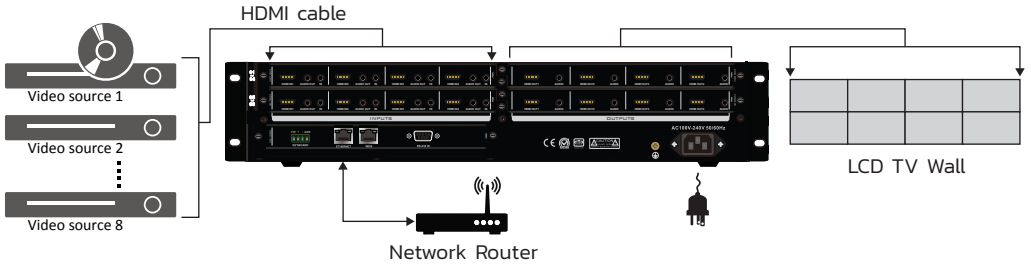
DRAG & DROP CROSS MULTI-VIEW VIDEO WALL & MATRIX SWITCH

VW8208 / VW8316

Quick Installation Guide

Hardware Installation

1. Connect HDMI cable between Video source and HDMI Input
2. Connect HDMI cable between HDMI output to LED TV Wall
3. Connect LAN Cable from Router to Ethernet Port
4. Connect Power Cable to Power Supply
5. Connecting PC/Notebook into same network segment
6. Plug USB key in the package to PC/Notebook



Software Installation

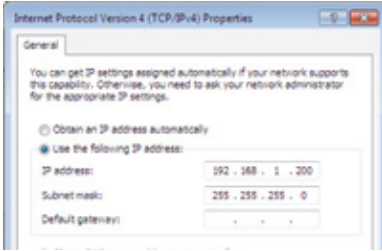
1. Download software from webpage below
<http://nexisgroup.com.tw/content/8-support>
 2. Unzip and run the setup file into PC/Notebook
 3. Click Next following the screen until Finish
- Note :
Please make sure USB key connecting to your PC/Notebook



Software Operation

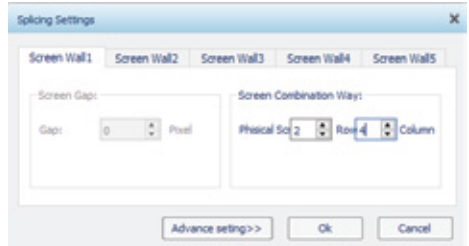
1. Double click Nexis icon on the desktop then login to the system by default user & password
After login you will see below GUI

Default User : admin Password : admin

2. On your PC/Notebook go to Network Setting and change your PC/Notebook IP/Subnet address to 192.168.1.200, subnet 255.255.255.0

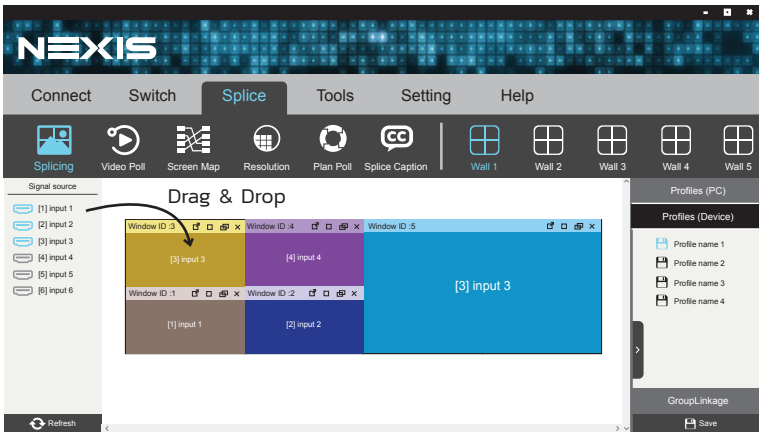


3. Click Connect  icon in sub menu then you will see the icon light up. Goto Tab Splice and click Splicing  icon. You will see popup below. On tab Screen Wall1 put number of TV screen Row and Column you want to create the TV Wall and Click OK

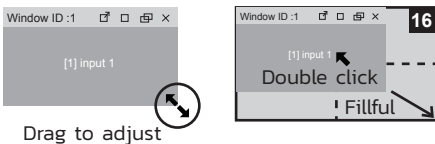


Note : Default IP of NEXIS Controller : 192.168.1.190
you can change IP Address later under menu setting -> IP setting

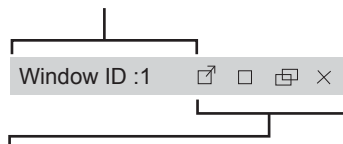
4. Drag & Drop mouse from Video input source signal on the left panel to the LCD TV Preview area



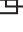



Adjust Window size by drag mouse from each Window corner or double click on the Window to fillful to TV area

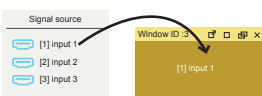


You can Drag & Drop window to any position* on the screen from this bar



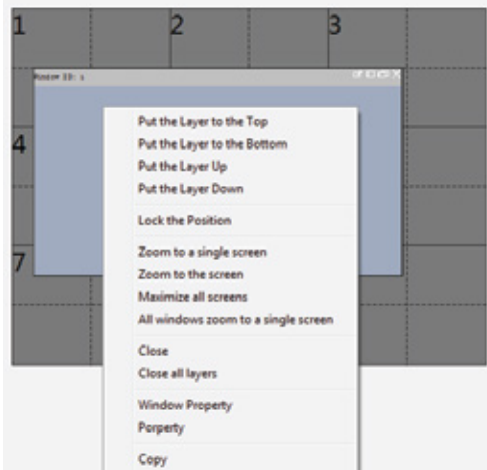
-  Fillful Window to TV Area
-  Maximize Window to the whole video wall
-  Restore window size
-  Close window

You can change video signal source by Drag from left panel to any Windows area that you want to change input signal



*Note : One LCD TV area support only 2 video input signal on the screen (including overlap window)

The Right click on Window (or if the PC support touch screen and just press 2 sec. after the release of the hand) can pop up the right-click menu to set the window of attribute information of the port.



Put the Layer to the Top

Move window to the top layer

Put the Layer to the Bottom

Move window to the bottom layer

Put the Layer Up

Move window to up a layer

Put the Layer Down

Move window to down a layer

Lock the position

Locking the window on the current position and disable move to other position

Zoom to the screen

Zoom to the full screen on those panels that is covering by the window

All window zoom to a single screen

All Window zoom to cover a single panel

Close all layers

Close all the window

Property

Click to pop up the hardware information of the input port

Paste

Paste the copied input video to the clicked window

Zoom to a single screen

Zoom the window to full screen on the left upper panel of the window

Maximize all screens

Zoom full screen to the whole video wall

Close

Close the clicked window

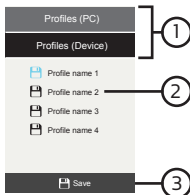
Window Property

Click to pop up the property window for adjust parameter manually

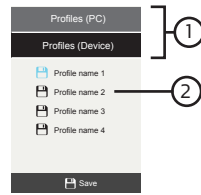
Copy

Copy the input video

5. Save Profiles to Device/PC



6. Recall Profiles from Device/PC



① Click on the Profiles (Device/PC) tab

② Select Profile

③ Click Save

① Click on the Profiles (Device/PC) tab

② Double Click on Profiles