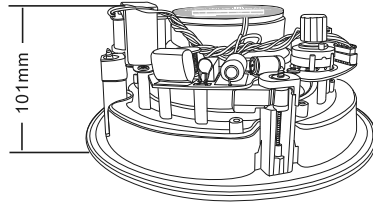
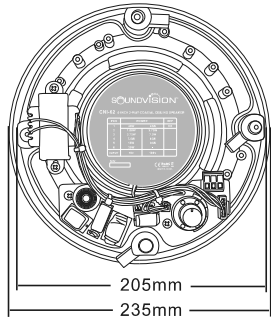
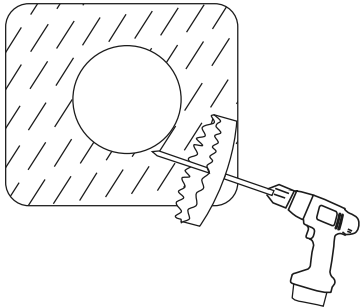


Dimension:

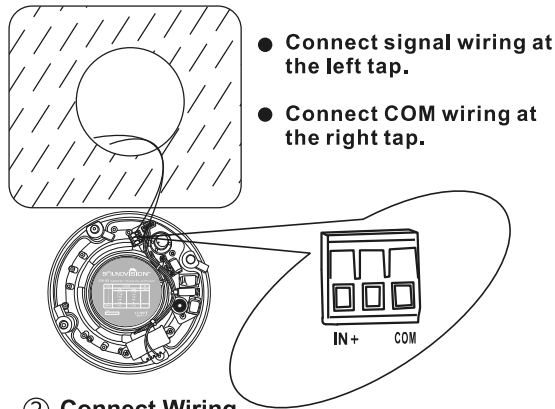


- DO NOT USE IN POSITION 1(8Ω) ON A 70V/100V SYSTEM, OR DAMAGE WILL OCCUR.
- DO NOT USE IN POSITION 6(N.C.) ON A 100V SYSTEM, OR DAMAGE WILL OCCUR.

Installation Steps:

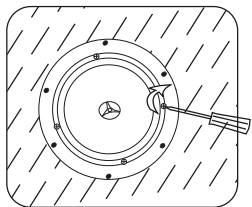


① Cut Ceiling Hole

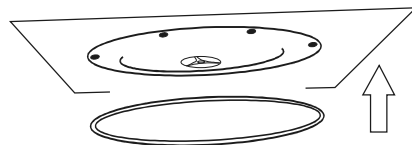


② Connect Wiring

- Connect signal wiring at the left tap.
- Connect COM wiring at the right tap.



③ Tighten the fastening screws in a clockwise direction.



④ Attach the grille.

CNI-62



2-Way Coaxial Ceiling Speaker

User's Manual

Thanks for using our speaker products. All our products are tested strictly before leaving the factory, with guaranteed quality.

Our speakers are widely used in such places as schools, gymnasiums, square halls, parks, parking lots, railway stations, airports, villa communities and mall supermarkets, etc., and they will be your ideal choice for public address system.

For better installation, commissioning and use of the product, please read this manual in detail before installation.

Safety Tips

- Please be sure to use the former reading detailed notes.
- Really pay attention to this manual and a safety with the important warning.
- Recommend that you keep this manual for future reference.

Common warning signs and security

The manual shown warning signs and security is to prevent the improper operation due to personal injury arising from the loss of property, please read before using this product must understand that this manual security symbols and Warning to indicate fully aware of potential risks.

	Warning Such as the inappropriate use of staff will cause injury, death and property damage.
--	---

When installed loudspeakers

- Definitely will not be allowed to speakers and any exposure in the rain-wet or water, may be inconsistent with , or fire.
- Restricted by the provisions of the speakers on the voltage, such as the us of high voltage may cause electric shock or fire disaster. Is no pruning, distorted, or replacement of damaged wires.
- Avoid instability in the installation or set up speakers, such as shaking the table or flat surface , the speaker can avoid falling caused personal injury or property damage.
- Speakers will be installed in support of the speaker or the weight of a solid shelf. Speaker swap can be avoided caused personal injury or property damage.
- Wet hands must not be admitted into or plugs, may lead to electric shocks.
- The allocation of plugs, make sure that pull plugs, rather than pull wires.
The use of a damaged power line of machinery may cause fire or electric shock.
- Mobile speaker, you plug the prior allocated. If the speaker and plugs may be moving together will cause fire or electric shock. For plugs, identified as plugs for grip.
- Will not be allowed to speakers on the vent cover, may cause internal heating caused by the fire.
- Avoid speakers installed in the humidity or dust, direct contact with the sun from the near-electric, or smoke or steam, may cause fire or electric shock

Description and Feature:

CNI-62 6-inch Coaxial ceiling loudspeaker 30Watts is ideal for indoor applications requiring high-quality sound. designed for a wide range of commercial line transformers with multiple for use in 100V /30W.
Taps at 70V: 30W, 15W, 7.5W, 3.75W, /1.88W,30W@8Ω | 100V: 30W, 15W, 7.5W, 3.75W, 30W@8Ω

Applications designed suitable, such as hotels, restaurants, bars, lounges, training and conference rooms, or shopping centers.

- 6-inch Coaxial ceiling loudspeaker for installation
- Elegant design.
- Easy to installation
- High-quality sound.
- Frequency response 70Hz~18KHz

Specification:

Speaker type	Coaxial ceiling loudspeaker
Rated power	30W
Line voltage	70V/100V
Transformer taps	70V: 30W, 15W, 7.5W, 3.75W, /1.88W,30W@8Ω 100V: 30W, 15W, 7.5W, 3.75W, 30W@8Ω
Frequency response	70Hz~18kHz (-3dB)
Sensitivity 1W/1m	90 ±3dB
Maximum SPL/1m (calc)	110dB
Coverage(Nominal -6 dB)	H160° (±5°)
Coverage (Nominal -6 dB)	V150° (±5°)
Driver LF Transducer	1 x 6-inch (Woven Kevlar Cone)
Driver HF Transducer	1 x 1-inch (Silk dome)
Nominal impedance (Passive)	8Ω
Operating temperature	-20 °C to +55 °C
Connections	Phoenix connector
Indoor applications	Yes
Color	White
Cabinet material	ABS enclosure
Front grille	Metal grille
Dimensions hole for mounting	Φ205mm
Dimensions	Ø235 x H 101 mm. (without bracket)
Weight	1.6Kg