

About Quest Engineering

Quest Engineering has been at the forefront of professional audio over the past two decades, consistently innovating with its broad range of practical solutions designed for real world applications. The vision of Quest was one of a company that could utilise its expertise in professional audio and deliver products that users would be able to depend upon and stand behind. With this core belief at the heart of Quest, the team has gone from strength to strength and our humble beginnings now see us with an international brand distributed all over the world.

Our headquarters in Melbourne Australia is equipped with a complete design facility encompassing full test and measure equipment, an anechoic chamber, and assembly facilities that empower our engineers to design and build loudspeaker systems as well as commercial solutions with the highest accuracy.

Constantly focused on developing innovative loudspeakers and power amplifiers with exceptional sound and robust design; we utilise the latest advancements in technology coupled with the unrivalled expertise of a dedicated acoustics team.

This no nonsense approach is a key driver in what sets Quest Engineering apart from the rest and with the future clearly in sight, we look forward to making you a believer in a company that truly cares about delivering quality products.

Heavy gauge steel protective grill

A sturdy powder coated and acoustic foam backed steel grill protects your investment. Insert bolts can be easily removed to make service or horn rotation easy. Well thought out and practical design provides you with a system perfect for use in the real world.

Quest proprietary asymmetrical wave guide

High frequency energy where it's needed. The upper half of the Quest wave guide is designed to send sound to the back of the room while wide dispersion frequency coverage emanates from the lower half. This design minimises room reflections and increases vocal intelligibility while at the same time giving broad and even coverage to the audience close to the speaker system. When the horn is rotated to fold-back position, the wide coverage is close to the monitor with a capability of beaming down the stage on large stages. Available on QM 350i / 450a / 500 / and 700.

Internal electronics that are unseen and never heard

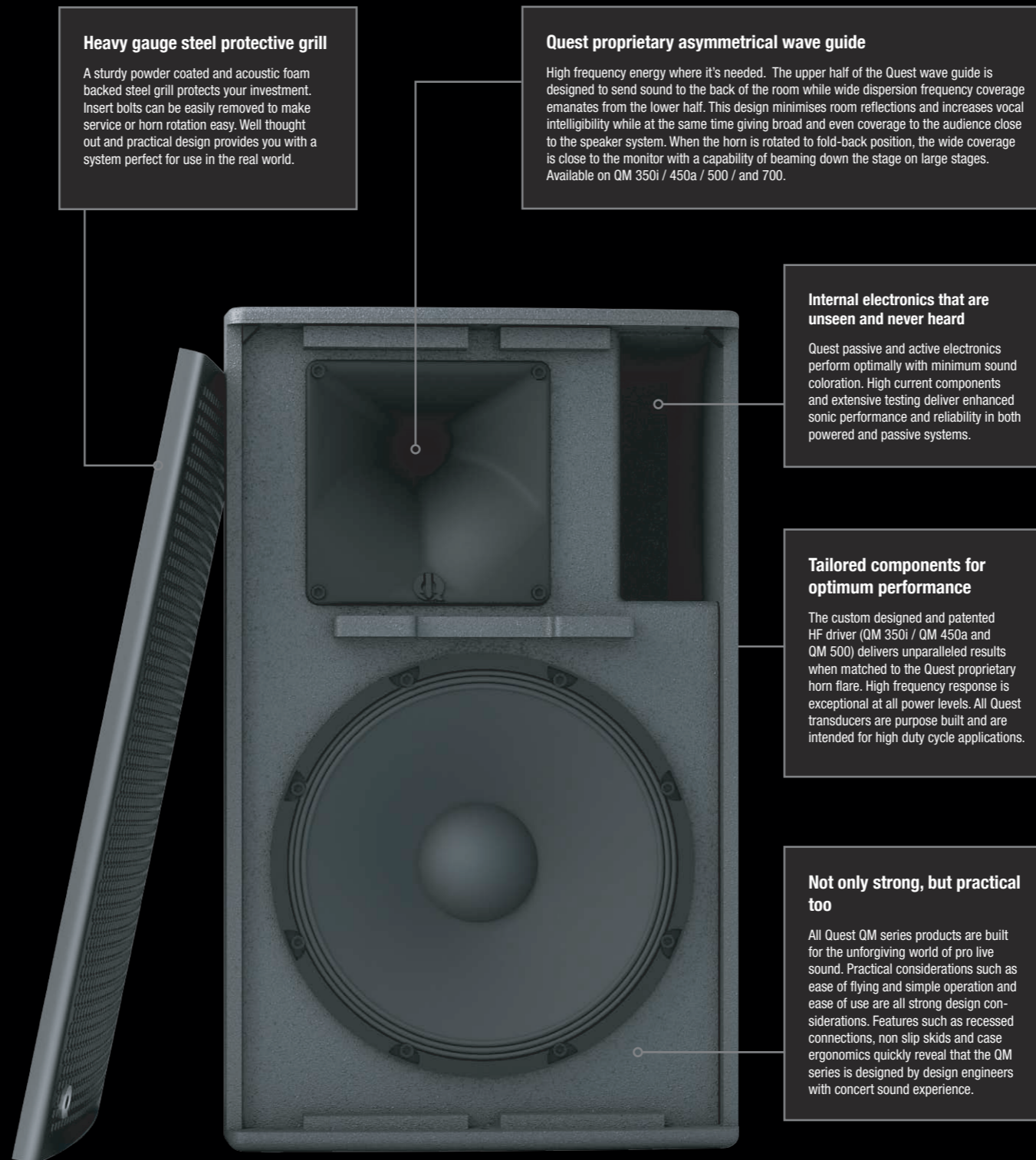
Quest passive and active electronics perform optimally with minimum sound coloration. High current components and extensive testing deliver enhanced sonic performance and reliability in both powered and passive systems.

Tailored components for optimum performance

The custom designed and patented HF driver (QM 350i / QM 450a and QM 500) delivers unparalleled results when matched to the Quest proprietary horn flare. High frequency response is exceptional at all power levels. All Quest transducers are purpose built and are intended for high duty cycle applications.

Not only strong, but practical too

All Quest QM series products are built for the unforgiving world of pro live sound. Practical considerations such as ease of flying and simple operation and ease of use are all strong design considerations. Features such as recessed connections, non slip skids and case ergonomics quickly reveal that the QM series is designed by design engineers with concert sound experience.



About Q-motion

The slogan, "Q-motion: for sound guys on the move" encompasses the core of the Q-motion range. The series has been designed and built by sound guys for sound guys, working in the competitive world of A/V installation and live sound.

With solutions starting at 8" satellite speakers through to high powered front of house and fold-back systems, the Q-motion range answers countless production needs for small to medium sized venues. Venues from lounge bars and night clubs through to auditoriums and houses of worship will find a Q-motion system that will accommodate both the audio challenge and the budget.

Performance is what Q-motion systems are all about. The Quest Engineering design team's attention to practical details make the Q-motion series an asset to any production inventory. The mix and match capabilities of the Q-motion range are based around the need of all production companies to have a more practical range of inventory which provides more choice of system configuration.

The second priority of equal importance is reliability. Systems with good sonic performance and a high failure rate are not acceptable. The Q-motion systems are built to take the treatment and conditions of high duty cycle pro audio. The industrial and minimalist styling hides the depth of product development, precisely engineered components and build quality needed to make these systems a genuine "pro" package.

QM DC Series

Versatile co-axial compact monitors or FOH

Ideal for short throw front of house or small stage fold-back, the Q-Motion DC series offers a choice of 10" or 12" 2-way compact multi-purpose loudspeakers featuring strong vocal presence and smooth frequency response. The high grade plywood cabinet has two floor monitor angles and optional installation brackets. This combined with the Quest custom designed 1" HF rear mounted coaxial driver, makes for an extremely versatile live or installation system.

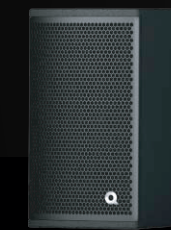


	QM 10DC	QM 12DC
Speaker Type:	Full Range	
Components:	Coaxial 10" Woofer + 1" exit HF Driver	Coaxial 12" Woofer + 1" exit HF Driver
Freq. Response:	75-18kHz	69-18kHz
Nom. Imp.:	8 Ohms	
Max SPL:	123dB SPL	126dB SPL
Rec. Power:	200W	300W

QM 108

Small footprint, big sound, extremely mobile

Ultra compact, the QM 108 is a 2-way upper-bass/mid-high trapezoid satellite speaker. Ideal as a mobile live micro system or as part of a mid powered distributed installation, the HF horn can be rotated for optimum coverage when horizontal installation is required. Components and voicing suit both live vocals and program music. The QM 108 is the ideal partner for the QM 1000a flexi-system or QM 1000P amplifier. Optional wall bracket for tidy installation or pole mount for mobile sound.



Speaker Type:	Full Range
Components:	8" Woofer + 1" HF Driver
Freq. Response:	80-20kHz
Nom. Imp.:	8 Ohms
Max SPL:	120dB SPL
Rec. Power:	200W

QM 12FR

Durable high powered compact live sound

High powered compact 2-way loudspeaker system for full range reproduction or as part of a multi-way system with sub bass enhancement. The 12" low frequency woofer and 1.4" exit 3" voice coil high frequency compression driver provides high output for better performance; both in portable and permanently installed applications. Ideal for band/DJ venues, theatres and mobile live audio applications.



Speaker Type:	Full Range
Components:	12" Woofer + 1.4" HF Driver
Freq. Response:	55-20kHz
Nom. Imp.:	8 Ohms
Max SPL:	129dB SPL
Rec. Power:	500W

QM 215FR

Full range general purpose production with more

Quasi 3-way loudspeaker 2 x 15" and 1.4" exit 3" voice coil high frequency compression driver system provides high output, low distortion sound reinforcement for the entire range of pro audio applications. Suited to full range front of house, monitor drum-fill and as part of an arrayed multi-way sound system in medium to large live sound venues.



Speaker Type:	Full Range
Components:	2x15" Woofers + 1.4" HF Driver
Freq. Response:	52-18kHz
Nom. Imp.:	4 Ohms
Max SPL:	130dB SPL
Rec. Power:	1000W

QM 12MP

Loud stage fold-back with more vocals

This multi-purpose high powered speaker is a combination high-output, low-profile stage monitor/front of house system. A purpose designed 12" low frequency woofer and 1.4" exit 3" voice coil high frequency compression driver provides high power handling. The EQ profile gives a very flat response with a standard vocal microphone and is also available in mirrored pairs. Ideal for high SPL band stages in high noise level environments.



Speaker Type:	Full Range
Components:	12" Woofer + 1.4" HF Driver
Freq. Response:	65-20kHz
Nom. Imp.:	8 Ohms
Max SPL:	128dB SPL
Rec. Power:	500W

QM 350i

High fidelity live sound with wave guide

The QM 350i 12" + 1" horn is a multi-purpose speaker system designed for professional mobile live sound applications and installations where a mid powered versatile FOH or fold-back monitor is required. A unique rotatable high frequency asymmetrical wave guide and custom driver delivers an exceptionally accurate HF response plus the ability to focus the sound to exactly where it is needed; minimizing room reflections.



Speaker Type:	Full Range
Components:	12" Woofer + 1" HF Driver
Freq. Response:	60-19kHz
Nom. Imp.:	8 Ohms
Max SPL:	126dB SPL
Rec. Power:	400W



QM 500

High fidelity, extended "punch" and excellent HF control

The QM 500 15" + 1" horn is a multi-purpose speaker system similar to the QM 350i mid powered FOH or fold-back monitor and features the unique and highly practical asymmetric wave guide. The QM 500 is ideal for mid power high fidelity applications where the extra punch of a 15" speaker is required. The QM 500 possesses exceptional sound and practicality combined. Optional wall brackets are also available.



Speaker Type:	Full Range
Components:	15" Woofer + 1" HF Driver
Freq. Response:	55-18kHz
Nom. Imp.:	8 Ohms
Max SPL:	128dB SPL
Rec. Power:	500W

QM 700

Large stage full range monitor or FOH without compromise

High powered 15" + 1.4" horn multi-purpose speaker system designed for professional mobile live sound applications and installations where a very high powered versatile FOH or fold-back monitor is required. The wave-guide can be rotated through four dispersion plains, maximizing the QM 700's capabilities as a high fidelity front of house system or monitor speaker for high SPL stages or venues where full range sound at a high level is needed.



Speaker Type:	Full Range
Components:	15" Woofer + 1.4" HF Driver
Freq. Response:	50-16kHz
Nom. Imp.:	8 Ohms
Max SPL:	130dB SPL
Rec. Power:	700W

QM 450A

High definition powered speaker system with wave guide

The powered, QM450A is a 450 watt multi-purpose speaker system for professional mobile live sound applications. Based on the QM 350i, the QM 450A is a versatile front of house or fold-back system with unique rotatable asymmetric horn flare. Boasting superior clarity and exceptional HF response, the QM 450A is driven by a powerful 450 watt internal bi-amplifier with self processing electronics. An active loudspeaker system which encompasses the unique features of the Q-motion range.



Speaker Type:	Active Full Range
Components:	12" Woofer + 1" HF Driver
Freq. Response:	55-19kHz
Nom. Imp.:	8 Ohms
Max SPL:	126dB SPL
Rec. Power:	450W (400+50)

QM 1000AS

Powered sub/satellite system module for professionals

This combination sub/satellite system is the ultimate in compact utility mix and match solutions. The QM 1000a sub enclosure contains 1 x 650 watt RMS mono bass amplifier and 2 x 300 Watt RMS @ 4 ohms independently accessible satellite amplifiers. A sophisticated input patch panel allows for a variety of connection configurations. Ideal for mobile DJ, small band, bar installation and audio visual multi-media production making it the ideal partner for the small format QM satellite boxes.

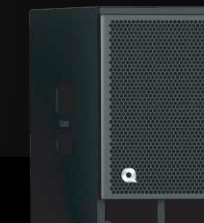


Speaker Type:	Active Subwoofer
Components:	15" Woofer
Freq. Response:	44-80/200Hz
Nom. Imp.:	8 Ohms
Max SPL:	127dB SPL
Rec. Power:	660W Sub + 2x200W Sat. outputs

QM 600S / QM 600AS

Compact 15" bass available in both active and passive

A compact passive (600S) or powered (600AS) sub bass perfectly suited to mobile audio or permanent installations. The QM 600S 15" passive sub bass has high output for its small size. The QM 600S can also be matched to the QM 1000P flexi-amp system or powered with any of the QA amplifiers using the amplifiers internal cross-over electronics. Practical design and features makes it convenient to install in space sensitive venues.

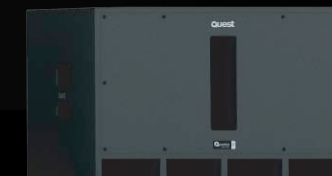


Speaker Type:	Passive Subwoofer	Active Subwoofer
Components:	15" Woofer	15" Woofer
Freq. Response:	40-250Hz	40-80/200Hz
Nom. Imp.:	8 Ohms	
Max SPL:	127dB SPL	127dB SPL
Rec. Power:	650W	650W sub

QM 212S / QM 212AS

Punchy compact 2 x 12" bass in two practical versions

The QM 212S is a passive two chamber band-pass design with one front loaded direct radiating pressure chamber loading its two purpose designed 12" bass drivers. The system is capable of producing a max SPL of 131 dB with a long term power handling of over 750 watts RMS. Small enough to fit under a stage and with recessed back panel connections, it can be placed hard up to a wall. Also available as an active model (QM 212AS).



Speaker Type:	Passive Subwoofer	Active Subwoofer
Components:	2x12" Woofer	2x12" Woofer
Freq. Response:	40-250Hz	40-80/200Hz
Nom. Imp.:	4 Ohms	
Max SPL:	131dB SPL	131dB SPL
Rec. Power:	750W	750W sub

QM 1000P

An amplifier/processor rack in a single unit

Dedicated stereo satellite plus mono sub bass amplifier system allows a variety of loudspeaker and sub bass configurations in both permanent or mobile sound installations. A comprehensive cross-over and adjustable input limiter allows optimum matching to a variety of Quest sub bass and full range speakers. Ideal for small bar installations or mobile sub/satellite audio visual and small band/DJ systems.



Speaker Type:	Amplifier
Components:	-
Freq. Response:	20-20kHz
Nom. Imp.:	-
Max SPL:	-
Rec. Power:	1 x 600W + 2 x 220W (8ohms) 1 x 1000W + 2 x 400W (4ohms)



Quest Research & Development

Quest Engineering places a high priority on acoustic research. The Quest lab is equipped with the latest in high end research and design technology covering all aspects of transducer design, cabinet modelling and performance measurement. In fact, Quest Engineering is the only Pro-Audio manufacturer in Australia with both a purpose built anechoic chamber as well as a world-class Klippel machine which is used for precision testing and reporting of Thiele\Small parameters.

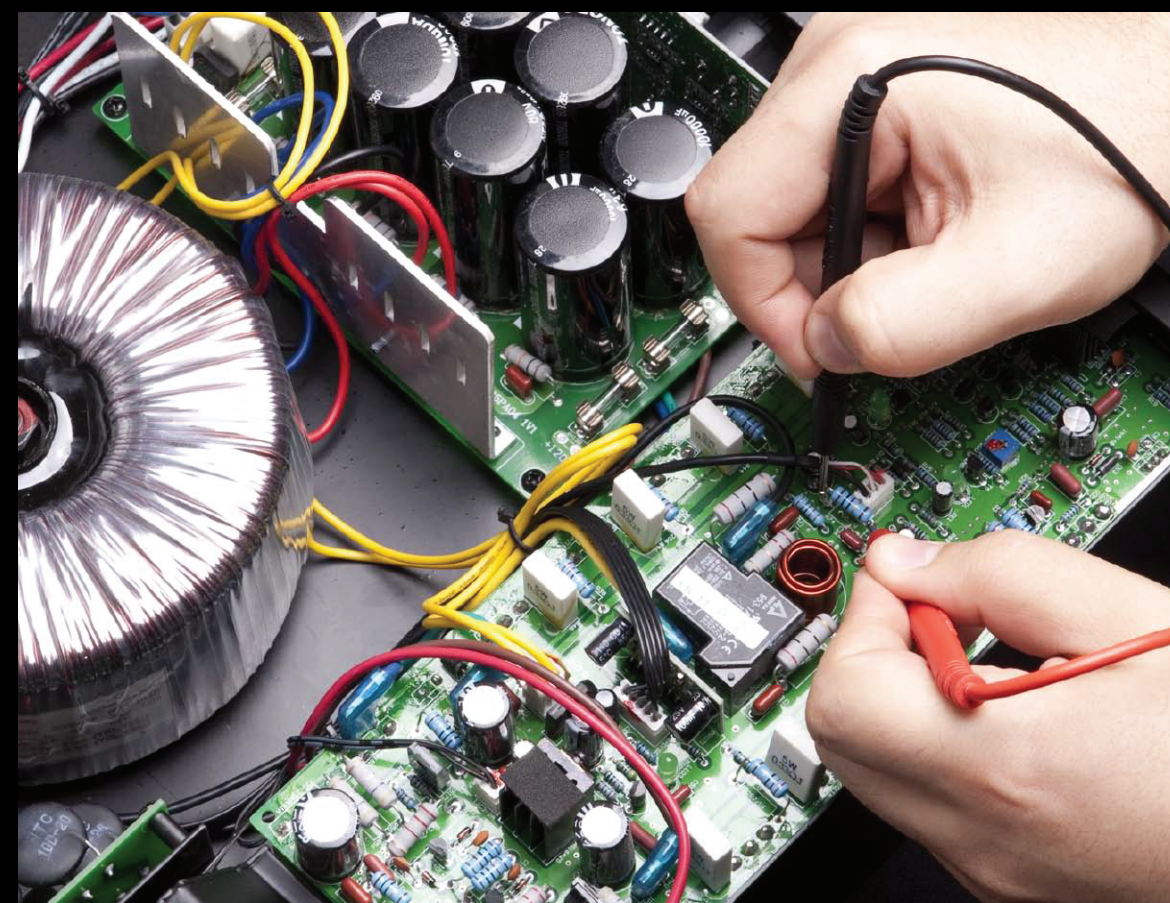
As a result of this extensive R&D, a number of unique developments have made their way into the Q-motion range. Transducers used in Q-motion speaker systems have been built to accommodate the custom requirements of each system which is why very little outboard EQ is required to achieve a smooth frequency response without the requirement for additional compensating processors.

Other specialised technologies have been developed to solve specific audio challenges and each member of the Q-motion range has a specific feature that an engineer can add to their problem solving tool box.

Q-motion Components

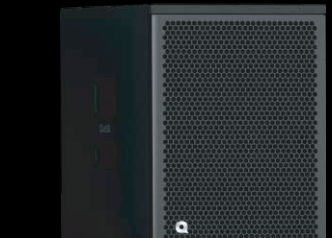
Speaker transducers in the QM range have been purpose designed or selected by the research team with a high priority on durability. A combination of innovative engineering and thoughtful design throughout all parts of the system deliver a robust, yet practical package for audio professionals that can continuously handle high demanding applications. With Quest working closely with end users, component technology has become focused on outcomes that work in the real world. The same approach applies to passive crossover electronics which are developed through a combination of considerable practical experience coupled with outcome specific design.

Each Q-motion speaker system has purpose specific components. To deliver the extra edge in terms of reliability and power, Quest Engineering develops critical components to meet exacting standards. This way, system processors are not necessary to achieve high reliability and sonic performance. Robust build specifications including large high temperature voice coils, generous magnet structures, high powered passive crossovers and heavy duty build quality form the recipe behind the QM series long life in challenging venue environments.

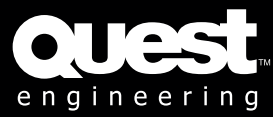


QM 118S

Partially horn-loaded 18" system with passive x-over. High efficiency design reproduces both punch and deep bass. Ideally suited to high-power and mid-thrump applications as a single element or as part of a sub bass multiple element block.



Speaker Type:	Passive Subwoofer
Components:	18" Woofer
Freq. Response:	38-250Hz
Nom. Imp.:	8 Ohms
Max SPL:	130dB SPL
Rec. Power:	1000W



86 Derby Street

Pascoe Vale VIC 3044 Australia

Phone: +61 3 9354 9133
www.questaudio.net

Fax: +61 3 9354 9233
info@questaudio.net