

MX Series High-Fidelity Weatherproof Loudspeakers

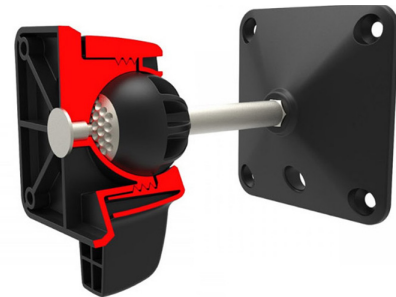
The Quest Engineering MX series are the first audio installation loudspeakers to meet the highest environmental ingress and audio fidelity standards whilst being available at an affordable commercial audio cost. Designed to integrate into any architectural commercial environment, its exceptional audio quality and componentry ensures a long performance service life.

The MX Series is available in black (MX601/MX801) or white (MX601W/MX801W) cabinets finished in clear low sheen finish formulated to resist harsh environmental conditions.



Q-Mount Mounting System - UB1 / UB2

The Q Mount UB1 / UB2 is a revolutionary mounting system for pro-audio speakers. The patent pending innovation delivers full articulation with replicable positioning accuracy, exceptional weight carrying capacity and easy user installation in a simple, lightweight compact form.



	MX601 / MX601W		MX801 / MX801W	
Max SPL *calculated	108 dB		112 dB	
Sensitivity *5-band average	91 dB		93 dB	
Frequency Response	80Hz – 20kHz ±2dB		75Hz – 20kHz ±2dB	
Impedance	16Ω			
Transformer Taping	100V: 10w/20w/30w/40w		100V: 20w/30w/40w/60w	
	70V: 5w/10w/15w/20w		70V: 10w/15w/20w/30w	
Amplifier Power	RMS:75W	Peak: 150W	RMS: 100W	Peak: 200W
Transducers	HF: 25mm Titanium Dome Tweeter	LF: 6" High Performance Polypropylene Woofer	HF: 25mm Titanium Dome Tweeter	LF: 8" High Performance Polypropylene Woofer
Directivity *H x V	150° x 120° -10dB			
Connections	Captive Screw Terminal Plug (In/Thru)			
Environmental Ingress Rating	Speaker Cabinet IP56 (IP67 when used with IPMX1 kit)			
Dimensions *H x W x D	303 x 184 x 175mm		345 x 202 x 243mm	
Net Weight	3.5 kg		4.3 kg	
Shipping Weight	5.4 kg		6.0 kg	

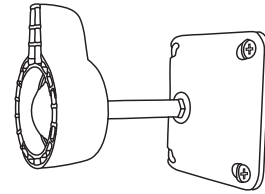
* Quest Engineering reserves the right to make changes in specifications, or products without prior notice.

** The figures shown above are 'real world', usable specifications and are conservative as a result. Quest Engineering does not believe in portraying misleading or exaggerated specifications.

Installation Accessories

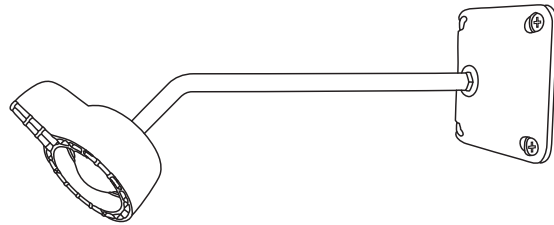
UB1 (UB1W white) Installation Bracket

Wall mount pan/tilt mounting kit for MX601/MX801
and MX601W/MX801W



UB2 (UB2W white) Installation Bracket

Ceiling mount pan/tilt mounting kit for MX601/
MX801 and MX601W/MX801W



IPMX1

Connector Shroud and Cable Gland Kit
required to meet IP67 rating.
(Accepts 5-10mm diameter cables)

