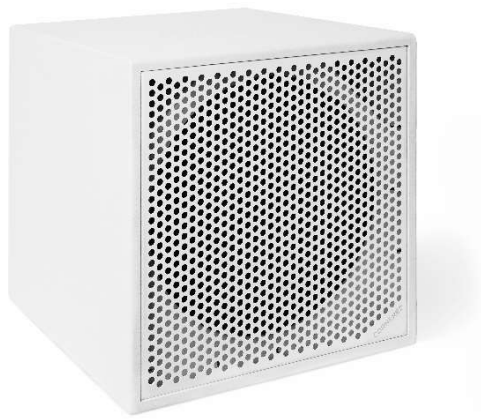


# CORNERED AUDIO C15NC



## Description

C15NC is a high-performance subwoofer that combines very high output with low weight. Featuring a built in flying system, the C15NC is particularly suited as fly sub for the LS1 line source. Designed for medium to high SPL applications, the plywood cabinet features a very rugged and non-reflective polyurethane coating, recessed dual Speakon NL4 connections, a solid 2mm foam covered steel grille and optional rubber feet.

The 15" woofer feature an advanced neodymium motor with very low power compression. The 4" four-layer interleaved voice coil provides high levels of thermal stability and the double spider ensure long linear travel and a high degree of control this reducing distortion to a minimum.

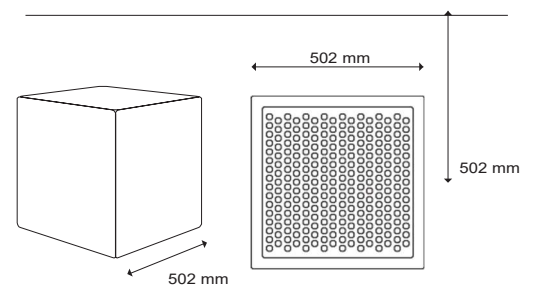
## FEATURES

- 15" long throw woofer
- 18mm plywood cabinet
- Bass reflex design
- Black polyurethane coating
- Built in flying system

## COLOURS



## DATA



Powerhandling, IEC268:	1000 watt
Powerhandling, peak:	4000 watt
Sensitivity, 2,83V/1m:	97 dB
Maximum SPL, long term:	127 dB
Maximum SPL, peak:	133 dB
Frequency response:	32-940 Hz
Nominal impedance:	8 ohm
Weight:	28 kg
Measurement:	502x502x502mm
Connections:	Dual Speakon NL4 with link
Colours:	Black, white

---

# CORNERED AUDIO C15NC

---

## Architectural Specifications

The loudspeaker system shall consist of a 15" woofer with a 4" interleaved sandwich voice coil. The cabinet shall be reflex loaded, made in plywood with integrated flying system and recessed Speakon NL4 connections.

Performance specifications of a typical production shall be as follows: SPL at 1m with 2.83 V input shall be at least 97 dB. Nominal impedance shall be 8 ohms, with minimum impedance being 6,2 ohm @ 170 Hz. Rated power handling according to IEC 268-5 shall be at least 1000 watt. Frequency response shall be from 32-940Hz +/- 3 dB.

The enclosure shall be painted in a non-reflective polyurethane coating. Outside dimensions shall be no greater than 502 mm (height) x 502 mm (width) x 502 mm (depth) and weight shall be 28 kg. The loudspeaker system shall be the Cornered Audio C15NC.

CORNERED Audio ApS  
Rosenkæret 13, 2. tv  
2860 Søborg  
Denmark

info@cornered.dk  
+45 43 66 10 88  
www.cornered.dk