

CORNERED AUDIO C5



FEATURES

5 1/4" woofer + 5 1/4" slave
 1" silk dome tweeter
 Aluminium cabinet
 Medium-SPL applications

COLOURS



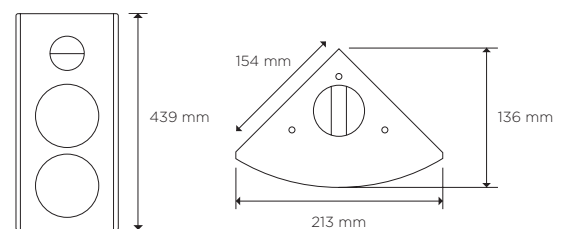
Description

The compact C5 is a 2-way full-range speaker with a slave design that enables it to reproduce bass below 50 Hz. With a wide and uniform dispersion, full coverage can be achieved by installing relatively few speakers, which in turn means saving money on amplifiers.

The basket of the Danish-designed woofer offers excellent cooling of the motor and very low air compression behind the cone, resulting in excellent dynamics and low power compression.

The 1" tweeter features a large surround that improves dispersion at high frequencies. In combination, the two drive units provide excellent clarity and speech intelligibility. The cabinet features a 16mm MDF baffle, has integrated mounting points and does not need a bracket. It is well damped and the triangular shape minimises standing waves and reflections from inside the cabinet. The C5 features a discreet cable terminal, located behind the grille. C5 is the perfect choice for loud background music in lounges and cafes or as an elegant conference room speaker.

DATA



Power handling, IEC268:	100 watt
Power handling, peak:	400 watt
Sensitivity, 2.83V/1m:	88 dB
Maximum SPL, long term:	108 dB
Maximum SPL, peak:	114 dB
Frequency response:	59-25.000 Hz
Nominal impedance:	8 ohm
Dispersion:	120x120 degree
Weight:	4,1 kg
Measurements:	439x213x154mm

CORNERED AUDIO C5

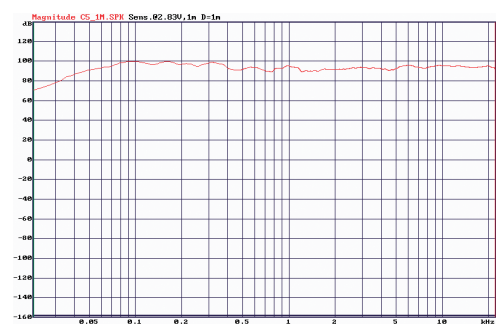
Architectural Specifications

The loudspeaker system shall consist of a 5 1/4" woofer, a 5 1/4" passive woofer for extended bass performance and a 1" tweeter with silk dome and with the voice coil dampened with magnetic oil for improved power handling. The second-order frequency dividing network shall utilize polypropylene capacitors to reduce hysteresis and air coils to reduce compression.

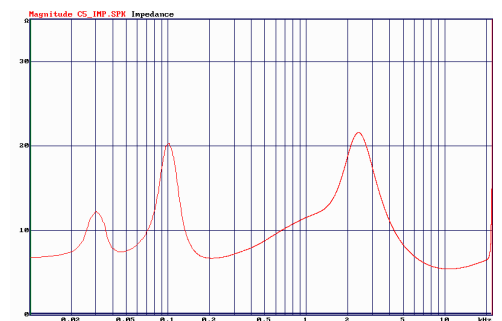
Performance specifications of a typical production shall be as follows: SPL at 1 m with 2.83 V input shall be at least 88 dB. Nominal impedance shall be 8 ohms, with minimum impedance being 6 ohm @ 10kHz. Rated power handling according to IEC 268-5 shall be at least 100 watt. Frequency response shall be from 59-25kHz +/- 3 dB.

The enclosure shall be rectangular in shape with no visible cable terminals and with a 90 degree angle allowing the speaker to be mounted in corners. It shall be manufactured of aluminium with an MDF baffle and shall incorporate integrated mounting points which allow the speaker to be mounted without brackets. Cabinet finish shall be satin white with a metal grille covered with white cloth or black with a metal grille covered with black cloth or aluminium with metal grille covered by grey cloth. Outside dimensions shall be no greater than 439mm (height) x 213mm (width) x 154mm (side) and weight shall be 4,1 kg. The loudspeaker system shall be the Cornered Audio C5.

FREQUENCY RESPONSE



IMPEDANCE



CORNERED Audio ApS
Roskildevej 16A
2620 Albertslund
Denmark

Mail info@cornered.dk
Tel +45 43 66 10 88
Web www.cornered.dk