



Brief Description The **WT500** is a simple, easy to handle and has the ability to achieve quality results quickly. He has the speed and power to **emulsify, suspend, cut and chop** always to deliver accurate results. It has complete flexibility to hold it by hand, mounted to a pole or wall, with mounting plate or type H. The WT500 homogenizer is the ideal solution for dispersing, homogenizing, mixing and grinding **biological tissue samples (cells, animal and plant tissues), pharmaceutical products, cosmetics and food products.**

Features & Specification

Working Volume (ml)	100 – 40,000 ml (High Speed Mixer) 0.2 – 8,000 ml (Disperser & Homogenizer)	Operating Environment	0-40°C, 95% rel. humidity
Motor type	Universal motor, 500 Watt	Protection class	IP20
/ Frequency	110-120V/60Hz , 220-240V / 50-60 Hz	Certified standards	89/336EEC,72/023/EEC, EMC acc. IEC/EN 61000-6-2 / 3, Safety acc. IEC/EN 61010-2-51
Electrical Plug Type	UK Plug,US Plug,European Plug,China CCC Plug	Container Type	0.5ml Eppendorf tubes 50ml tubes,100ml tubes,250ml tubes, small beakers, medium beakers ,large beakers
Speed range (rpm)	10,000 - 30,000	Warranty	2 years – spare part due to manufacturing defects
Speed control type	Dial knob 6 stage	Sterilization Method:	All
noise emission (drive only)	< 72 dB(A) at 30,000 rpm	pH Range:	2-13
Dimension LxWxH / (mm)	250 x 250 x 700	Suitable for solvents & abrasive substances::	YES
Weight (kg)	8.0	Ultimate Fineness, Suspensions&Emulsion: (µm) Max Viscosity (mPa)	Suspension: 10-15 Emulsion : 1-10 30,000



Serving Industry : Dressings and Sauce, Flavors, Fruit Juices, Concentrates, Pulps, and Soft Drinks, Seeds and Mustards, Ice Cream, Cheese Spreads, Sugar, Hydrocolloids, Milk Solids, Salts, Edible Oils, Fumed Silica, Inks and Lacquers, Carbon Black, Titanium Dioxide, Clays, Pesticides and Herbicides, Detergents, Resins, Pigments and Dyes, Catalytic Agents, Waxes and Polishes, Sulfur, Pharmaceutical & Biological Crystalline Solids, Tablet Coatings, Protein Extraction, Personal Care & Toiletry, Toothpaste, Carbopol, Creams, Ointments, and Lotions

Why purchase our homogenizer ?

***Excellent Result For Ultimate Fitness**

Suspension (um) : 5-25,



***Wide Range of application & Treatable Volume Container**

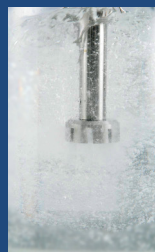
0.2-50 ml as the tissue error and cell breaker
 250ml-40,000ml as the high speed mixer

***Competitive advantages in Functional Design**

"**QUICK COUPLING**" design to remove or lock the shaft tube in place with an easy quarter-turn. One shaft for all the combination stator and rotor.

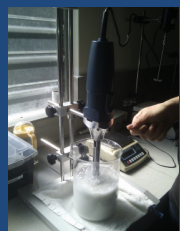


Highest tip speed 34 m/s mean shortest process time to achieve desired result.



***Unlimited Customer Support**

"**Pre-Order Questionnaire**" & "**Let's trial Run**" programme if you suspect the correct equipment to purchase? Let's you help us by fill in the questionnaire or you can ship us the sampls for trial run ! It's totally "FREE"



Dial to us our for 7/24 hrs products enquiry online technical support, after sales services and warranty spare parts replacement.



Please contact us for more info and quote :

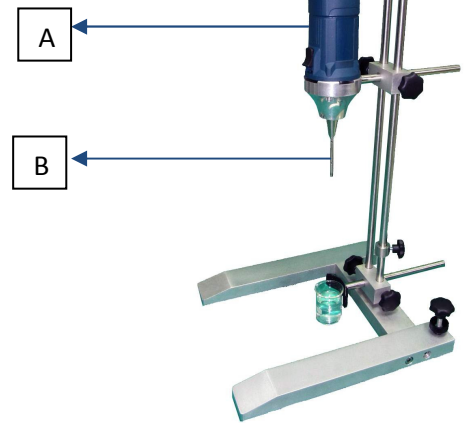




Modular "Dyna-Ken" Homogenizer Systems

Choose from shaft-generator assemblies to create the perfect system for your current application—
Shaping the homogenizer future !

- Customize your own system by choosing a variable-speed motor and a shaft depending on the viscosity of your sample
- Quick processing protects your samples from heat damage
- Quickly process volumes from 0.2 to 40,000 mL



A. Homogenizers

Built-in variable-speed controller lets you adjust speed from 10,000 to 30,000 rpm. Motors can be mounted on a stand or hand held. Use models WT500 to process higher volumes up to 40,000 mL.

What's included: H-stand set, Strap clamp, strap and rotor and stator rotor release kit. The 110-120 VAC models include a cord with a US plug; the 220-240 VAC models include a cord with a continental European plug.

Model	Description	Power Supply	Order No.
WT500-DR	Drive WT500	220-240VAC/50-60Hz, Euro Plug	171010000
		220-240VAC/50-60Hz, CN Plug	171010100
		220-240VAC/50-60Hz, UK Plug	171010200
		110-120VAC/60Hz, US Plug	171010300



B. Shafts and Generator Assemblies

The quick-connect shafts and generator assemblies are interchangeable. All Shafts are made from SS316L and easily disassemble for cleaning or replacement.

Generator assemblies are made up of the rotor and stator. Slots on the rotor and stator have beveled edges like a scissor giving you better shearing action. Unique slanted slots on the rotor constantly draw media through and allow it to build up speed. This eliminates the stop/start that slows the media

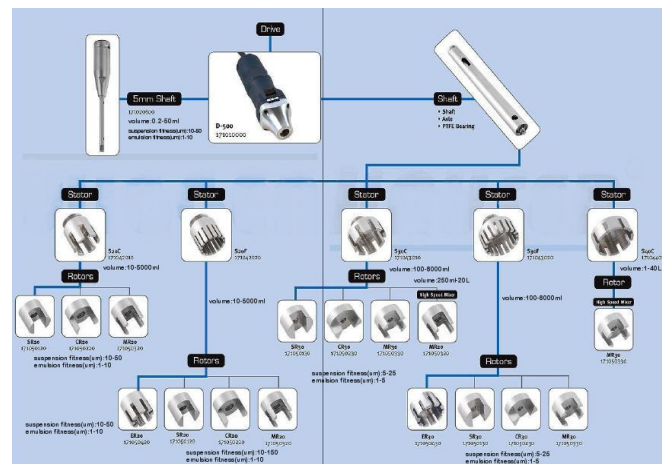
Model	Description	Volume (ml)- H ₂ O	Viscosity (mPa)	Order No.	
For normal viscosity products required high level of suspension and emulsion					
WT500-SS	SS2FER2	10 - 5,000	10,000	171020200	
	SS3FER3	100-8,000	10,000	171020400	
	For cutting fibrous / high stringy products				
	SS2CCR2	10-5,000	10,000	171020800	
	SS3CCR3	100-8,000	30,000	171020700	
	For emulsifying normal viscosity (aqueous) products				
	SS05CSR04	0.2-50	10,000	171020600	
	SS2CSR2	10 - 5,000	10,000	171020100	
	SS3CSR3	100-8,000	10,000	171020300	
	For mixing normal viscosity products				
SS2CMR2	10-5,000	10,000	171030000		
SS3CMR3	100-8,000	10,000	171030100		
SS3CMR2	250-20,000	10,000	171020900		
SS4CMR3	1,000-40,000	10,000	171020500		

Model	Description	Order No.	Description	Order No.
WT500-AC	Stator-Rotor for Replacement			
	Stator 05C	681010000	Rotor SR04	761010000
	Stator S2C	681010100	Rotor SR2	761010100
	Stator S2F	681010110	Rotor SR3	761010200
	Stator S3F	681010200		
	Stator S3C	681010300	Rotor ER2	761010300
	Stator S4C	681010400	Rotor ER3	761010400
	Rotor MR2	681010500	Rotor CR2	761010500
	Rotor MR3	681010600	Rotor CR3	761010600
	Other Accessories			
Strap	8100114000	H-Stand	8100112000	
Strap Clamp	8100110000	Stator-rotor Release kit	8100113000	



C. Optional Stator-Rotor and Accessories Parts

Replacement for stator generators customize your system to your unique processing requirements. Choose from the below interchangeable rotor-stator generators to add to a shaft-generator assembly or replace the worn generators.



Please contact us for more info and quote :