



# MicroLogPRO

## environmental monitoring

The MicroLogPRO solution offers two low-cost portable data logging systems to meet a broad spectrum of data monitoring needs.




**NEW!**

**Compatible with FourteLite**  
An Android mobile application utility that enables reviewing sampling sessions history, configuring devices and monitoring online sampling sessions.




- Stand-alone monitoring with up to 52K sample memory
- Internal temperature and humidity sensors with high accuracy and resolution
- Multi-function keypad for manual time stamp, run/stop activation
- Mini-USB port for PC communication and firmware updates
- 4-digit data display
- Built-in LED for logging and alarm indication
- Replaceable battery
- boomerang for automatic PDF data report
- Free DataSuite software for data monitoring, analysis and logger
- Water and dust resistant enclosure


## Solutions




COLD CHAIN




HOSPITAL ENVIRONMENTS



PHARMA INDUSTRY



WAREHOUSE STORAGE



TRANSPORTATION

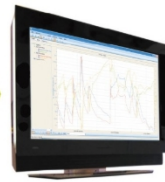
# MicroLogPRO Typical Operating Method



**1**  
Record data using internal or external sensors



**2**  
USB data download to PDF report with automatic email delivery



**3**  
Data analysis using integrated DataSuite software

## DataSuite Software for MicroLog

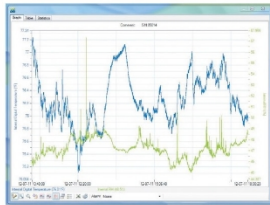
The DataSuite software provides security for your products with online monitoring and control of the entire application environment.

**Supported Operating Systems:** Supported Operating Systems: Windows® XP SP3 / Vista / 7 / 8.1 (32 and 64 Bit)

**Minimum Hardware Requirements:** Pentium 4.2 GHz Processor or better, 512 MB RAM, 250 MB available disk space

### Data View Features

Real-time data in multiple displays (Graph, Table, Statistics)

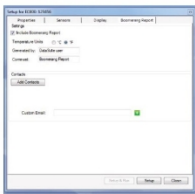


## Specifications

	EC800	EC850
<b>Measurement Inputs</b>	Two (one internal, one external)	Three (two internal, one external)
<b>Internal Sensor Range</b>	-40 to 80 °C	Temp: -40 to 80 °C RH: 5 to 95%
<b>Internal Temperature Accuracy</b>	0 to 60 °C: ±0.3 °C After calibration: -40 to 0 °C: ±0.3 °C 60 to 80 °C: ±0.3 °C	± 0.3 °C
<b>Internal Temperature Resolution</b>	0.02 °C or better	0.015 °C
<b>Internal Humidity Accuracy</b>	N/A	± 2 %
<b>Internal Humidity Resolution</b>	N/A	0.05 %
<b>External Input Support</b>	NTC Temperature -50 to 110 °C	
<b>Sampling Memory</b>	52,000 samples (over 3 channels)	
<b>Sampling Rate</b>	Minimum: Once every second Maximum: Once every 18 hours	
<b>Auto PDF &amp; Email Delivery (Boomerang Feature)</b>	✓	
<b>LCD</b>	Four-digit, 7-segment LCD with decimal point	
<b>Dew Point</b>	LCD and software indication	
<b>LED</b>	LCD and software indication	
<b>PC Interface</b>	Mini USB	
<b>Infrared Printout</b>	None	
<b>Power Supply</b>	2/3 AA 3.6V lithium battery	
<b>Battery Life</b>	~ 2 years depending on sampling rate and operating conditions	
<b>Dimensions</b>	Diameter: 72 mm, Thickness: 22.9 mm	
<b>Weight</b>	55 g	
<b>Wall Mount</b>	Cradle accessory	
<b>Standards Compliance</b>	CE, IP65, EN12830	CE, IP54, EN12830

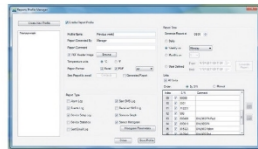
### Boomerang™ Feature

Configure logger setup to automatically create and email PDF data report when connected to computer via USB



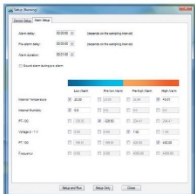
### Report Module

The Report module provides the Microlog user with an intuitive interface for creating and generating reports which have many parameters garnered from the PicoLite units and software. Each report can be emailed to a selected distribution list, at pre-defined time intervals, in PDF and Excel format.



### Alarm Features

Alarm setup supporting two levels – Low and High – plus email & SMS notifications in the event of an alarm



### Analysis Features

Dew point analysis, FO Pasteurization, histogram, MKT, statistics with export to Excel and CSV formats

