

PV-ezRack® Product Catalogue

Solar Mounting Solutions



Clenergy is proud to support its customers and is committed to making the world a cleaner and safer place for future generations.

The background of the image features a series of overlapping, wavy bands in various shades of orange and red, creating a dynamic, flowing effect that suggests movement and energy. The colors transition from a bright yellow-orange at the top to a deeper red at the bottom.

Contents

01	About Clenergy
02	Milestones
03	PV-ezRack® SolarRoof™ ECO
05	Clenergy Thailand
06	PV-ezRack® Walkway
07	PV-ezRack® SolarRoof™, Tilt Leg
09	PV-ezRack® SolarTripod Light
11	PV-ezRack® Commercial Tilt
13	PV-ezRack® Commercial Tilt East-West
15	PV-ezRack® SolarTerrace I
17	PV-ezRack® SolarTerrace MAC
19	PV-ezRack® SolarTerrace Eco
21	EzTracker D Series
25	PV-ezRack® ezShade 2.0
27	DC 1500V String Combiner Box
29	Integrated String Combiner Box
34	Reference Projects

About Clenergy

Clenergy, a public company, listed on Shanghai Stock Exchange (stock code: SHA 603628), is a hi-tech company that specializes in solar product manufacturing, clean energy service and clean energy investment. Founded in 2007 and headquartered in Xiamen, Clenergy now has two manufacturing bases in Xiamen and Tianjin and branches in Shanghai, Hong Kong, Xi'an, Australia, Germany, Japan, Thailand and the Philippines which have brought Clenergy's products and services across the world. It has made a development mode of "Global Market, Local Service and Global Supply Chain".

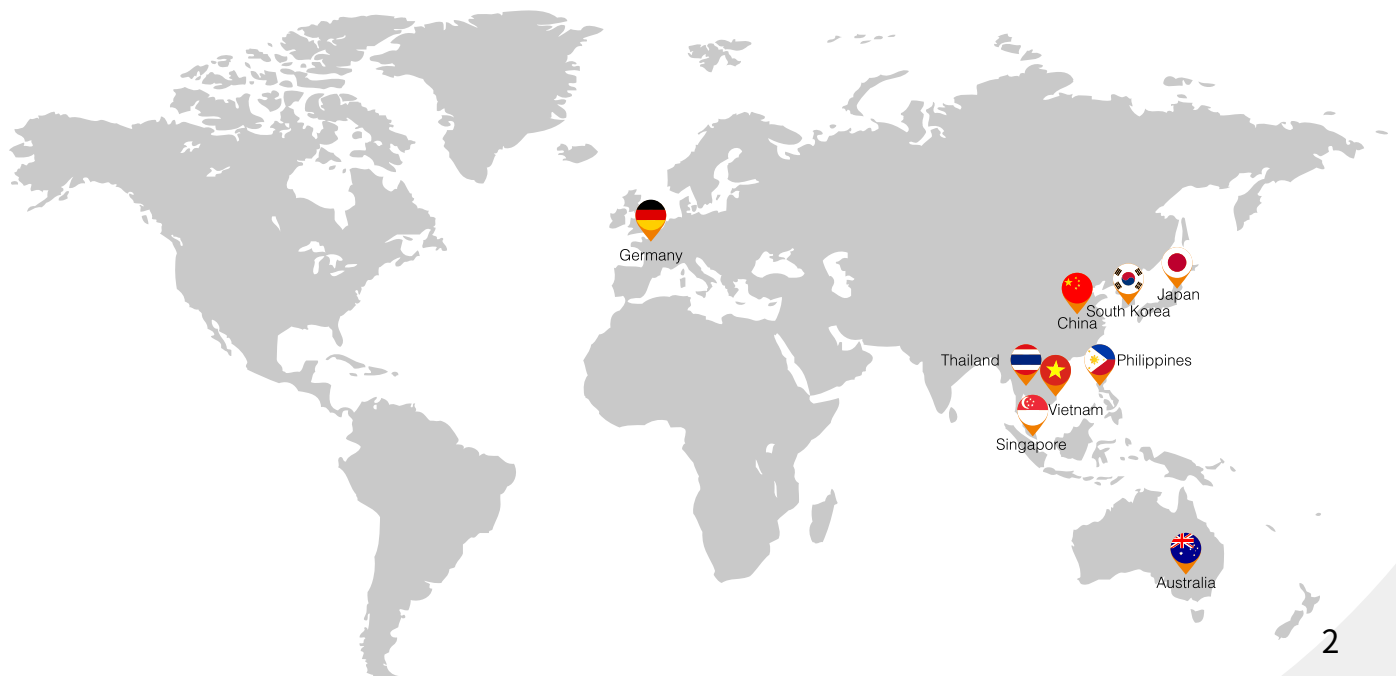
Clenergy has three business pillars: Global Offering of Solar Products, Solar Project EPC Services in China, and Investment in Global Solar Projects.

With the principles of Innovation, and Quality and Service, Clenergy has been pushing forward the development of clean energy around the world along the course of becoming a world renowned solar product and solution provider and solar power station developer, builder and investor.



Milestones

- **2007** - Clenergy was established as a Sino-Australian joint venture in Xiamen, China.
- **2008** - Clenergy Australia was established; Clenergy completed the development of its first PV-ezRack series of mounting systems and patents were registered.
- **2009** - The PV-ezRack series took a leading position in Australia's PV market.
- **2010** - New models of the PV-ezRack series were released; SPH inverters were launched in Australia's PV market.
- **2011** - Strategic investments were brought in for public listing preparation; U.K. and U.S. branch offices were established.
- **2012** - Opening of Clenergy Tianjin factory.
- **2013** - Grand opening of Clenergy Technology Park in Xiamen; Establishment of Clenergy (Xiamen) Energy Engineering Co., Ltd.; Expansion into clean energy investment and EPC businesses; Establishment of Clenergy Japan.
- **2014** - Establishment of a joint venture - Clenergy (Xiamen) Energy Investment Co., Ltd. with Xiamen Hi-tech Innovation Center; Establishment of Malaysian office.
- **2015** - Establishment of Clenergy Thailand; Establishment of Clenergy Philippine office.
- **2016** - Passed the IPO audit - the first solar company with major business of solar racking approved on China A-share since 2012.
- **2017** - Clenergy (stock code: SHA 603628) stock was officially traded on Shanghai Stock Exchange on Jan 12, 2017. Establishment of Clenergy Global Projects GmbH; Establishment of Clenergy & Leitu Energy Company Ltd.; Establishment of West China Clenergy Energy Company Ltd.
- **2018** - Doubled the sales volume and shipped 1.7GW of solar products.
- **2019** - Ranked No.4 in Top 20 Chinese Solar Mounting System Companies.



PV-ezRack® SolarRoof™ ECO

Robust Solution for PV Installation on Pitched Roof

PV-ezRack® SolarRoof™ ECO is a universal solution designed for PV-module installation on tin roof. Thanks to our Interfaces, Rails and Clamps with unique sectional property, PV-ezRack® SolarRoof™ ECO System could offer robust structure and long lifecycle. Available with penetrative and non-penetrative solution on a large variety of roof types.

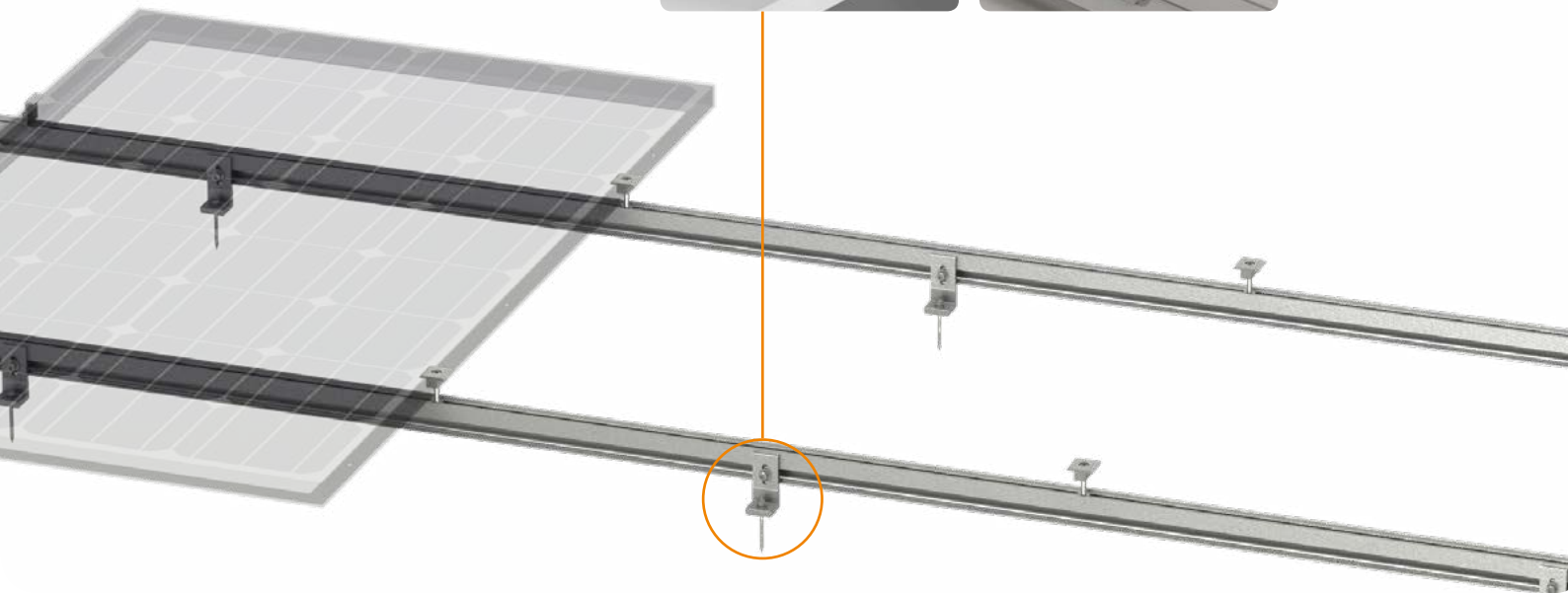
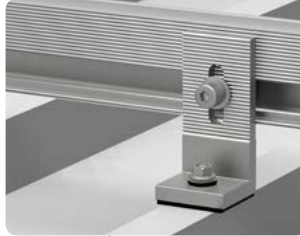


Technical Details

Module Orientation	Landscape or Portrait
Module Type	Framed Frameless
Wind Load	Customized
Roof Type	Tin Roof
Tilt Angle	Parallel to the Roof Slope
Material	Main Structure: AL6005-T5 Fasteners: SUS 304
Standard	ASCE 7-10 AS NZS1170.2-2011 EN1991 JISC8955-2017
Warranty	12 years

Main Benefits

- Quick and Easy Installation
- Versatile Klip-lok Interface



ER-EC-ST
End Clamp



ER-IC-ST/U18
Inter Clamp



ER-R-ECO
ECO Rail



ER-SP-ECO
Splice for ECO Rail



I-05/6.3/85/CS
Tin Interface with Carbon
Steel Sheet Metal Screw
6.3x85 (metal purlin)



ER-I-32/45/M8
Klip-lok Interface 406
with U-opening

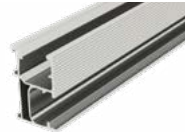
.....
more than 30 types of Klip-lok
Interfaces



ER-EC-ST30/35/40/45
End Clamp



ER-IC-ST35(40)/U18
Inter Clamp



ER-R-ECO/4200/5200
ECO Rail



ER-SP-ECO
Splice for ECO Rail



EZ-GC-ST
Grounding Clip



EZ-GL-STII
Grounding Lug



EZ-CC-PV/2
Universal Cable Clip for PV
Panels for Holding 2 Cables



I-05-6.3/85/CS
Tin Interface with Carbon Steel
Self-drilling Screw M6.3X85



ER-I-05/HB/MP
Tin Interface M8x150 SUS304
with Blue White Zinc Coating



ER-I-31/45/M8
Klip-lok Interface 400-700HS



ER-I-32/45/M8
Klip-lok Interface 406 with
U-opening



ER-I-20-TH
Klip-lok interface
for Angularity 18A



I-05-8/28/TH
Tin Interface
with M8x28-Bolt



ER-I-51/SM6.3/25
Tile Interface



CRC-R/ECO-ZBW
Cross Connector Clamp
of ECO-Rail with Z-module



ER-I-13-TH
Klip-lok Interface
for Hidden 26



ER-I-16-TH
Klip-lok Interface
for Standing Seam 22



ER-I-18-TH
Klip-lok Interface for
Standing Seam 20



ER-I-14-TH
Klip-lok Interface
for Angularity 25



ER-I-17-TH
Klip-lok Interface
for Standing Seam 8

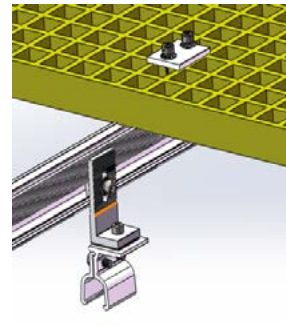
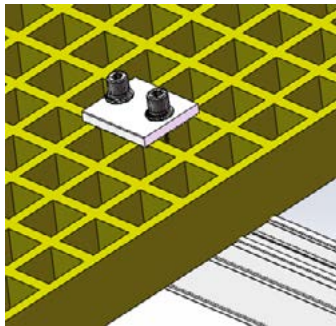
ติดต่อ Kantana Kanasa (TonAor) 066-1436807
email: kantanak@mgepower.co.th

A full standard pallet for parts is 1200*1100*1800MM A full standard pallet for 4.2m rails is 4200*1100*1000MM
A full standard pallet for 5.2m rails is 5200*1100*1000MM

PV-ezRack® Walkway

Walkway is fairly useful for a photovoltaic system, which not only makes Mounting and Maintenance easier, but also protect roofs during walking. Our Walkway can be compatible with all our products: ECO Rail, DS Rail, L-feet, etc. To be more versatile, we offer multiple choice of length, width and coating thickness.

- Assembly -



- Components -



Clamp



ECO Rail



ECO Rail



Tin Interface



Kliplok Interface

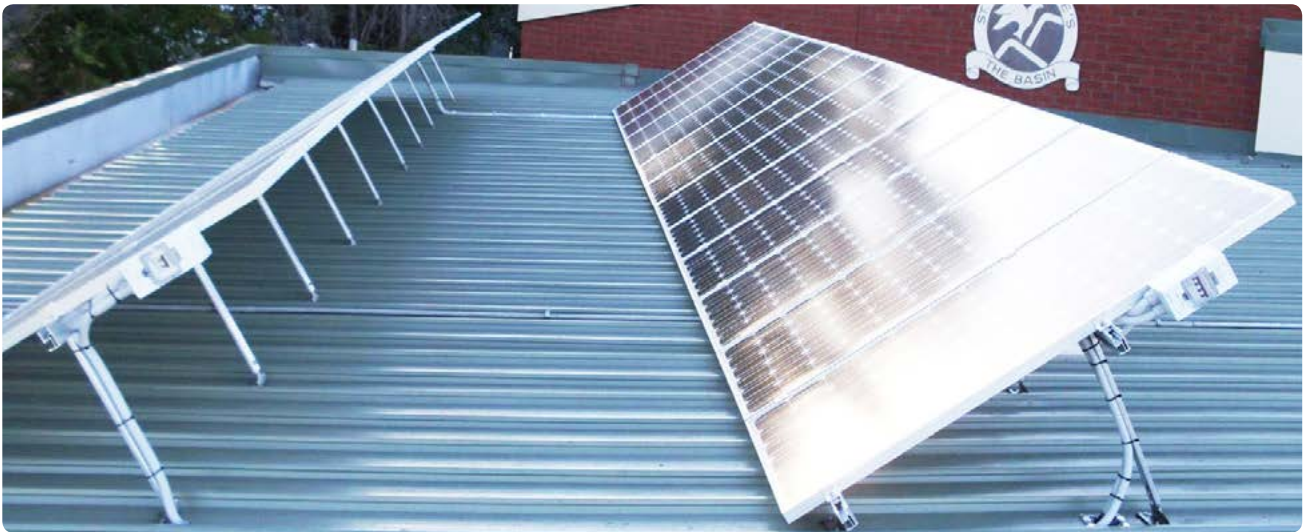
Technical Specification

Application	For Clenergy Mounting Structure only
Fixing method	Fixing on the Rail with Z-Modules and Hexagonal Bolts
Requirements	The static load per square meter should be less than 500KG
Material	Fiberglass Reinforced Plastic
Color	Yellow

PV-ezRack® SolarRoof™, Tilt Leg

Tilt Solution for PV Installation on Commercial Tin Roof

PV-ezRack® SolarRoof™, Tilt Leg offers large adjustable range from 10 degree to 60 degree for PV-module Installation on Commercial Tin Roof. The Legs, Rails and Clamps use high quality, robust and corrosion resistant materials including structural grade aluminum alloy (AL6005-T5) and stainless steel (SUS304).

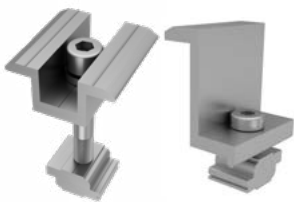
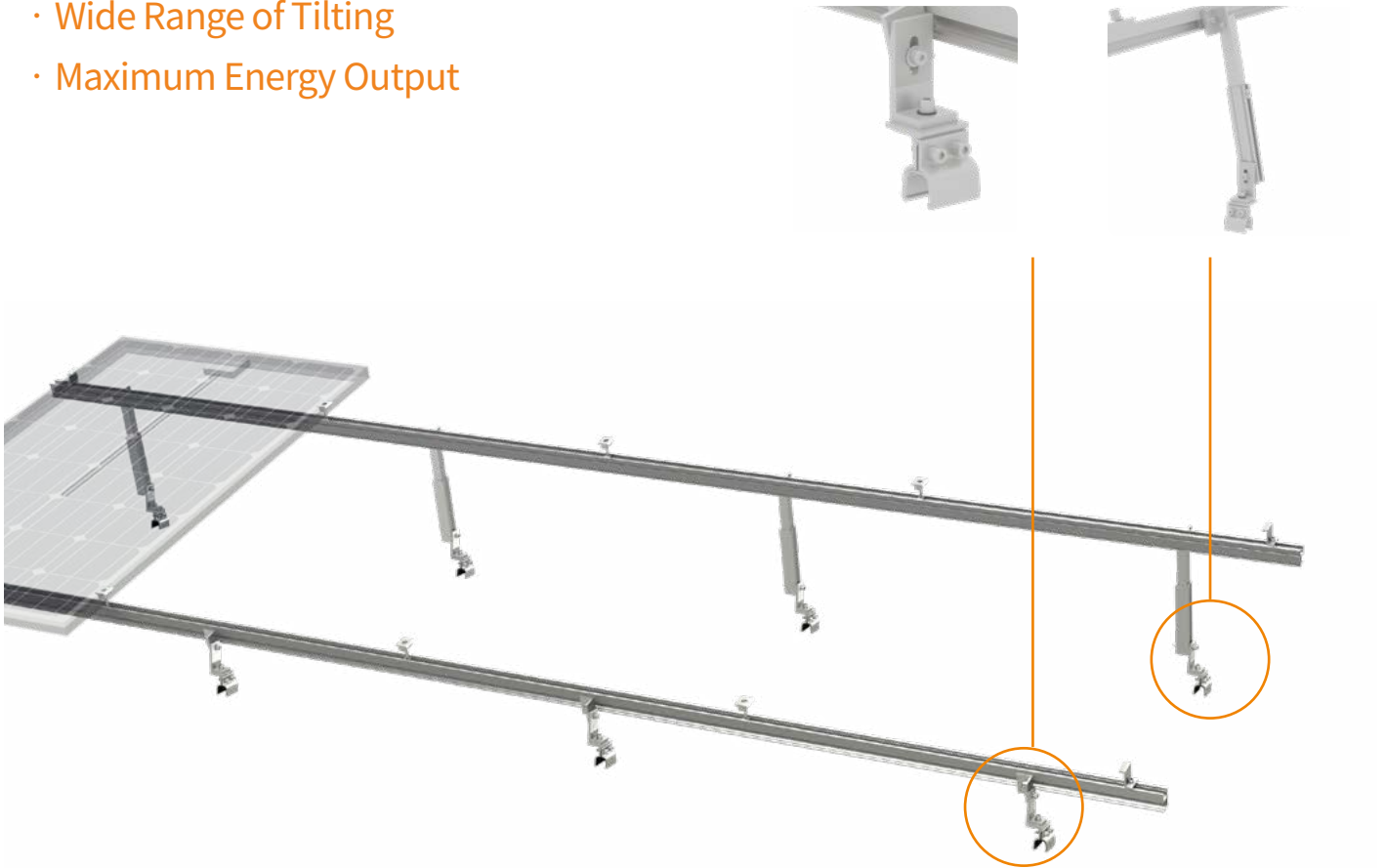


Technical Details

Module Orientation	Portrait
Module Type	Framed Frameless
Wind Load	Customized
Roof Type	Tin Roof
Tilt Angle	10~15°/15~30°/30~60°
Material	Main Structure: AL6005-T5 Fasteners: SUS 304
Standard	ASCE 7-10 AS NZS1170.2-2011 EN1991 JISC8955-2017
Warranty	12 years

Main Benefits

- Wide Range of Tilting
- Maximum Energy Output



ER-IC-ST/U18 & ER-EC-ST
Inter Clamp and End Clamp



ER-I-32/45/M8
Klip-lok Interface 406 with
U-opening



ER-TL-10 15
ER-TL-10/15, Tilt Leg,
adjustable 10-15 degree



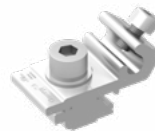
EZ-GC-ST
Grounding Clip



TL-10/15/L/PS
Tilt Leg with
L-feet, Adjustable
10-15 Degree



ER-SP-ECO
Splice for ECO Rail



EZ-GL-STII
Grounding Lug



ER-R-ECO
ECO Rail

PV-ezRack® SolarTripod Light

Pre-assembled Residential and Commercial Flat Roof Mounting System

The PV-ezRack® SolarTripod Light with pre-assembled Supports, including pre-installed Rail Clamps, is an economical mounting system, which is suitable for residential and commercial flat roofs. It has one of the fastest installation speed in its class. This system is manufactured from structural grade aluminium alloy to ensure excellent corrosion resistance and light weight.

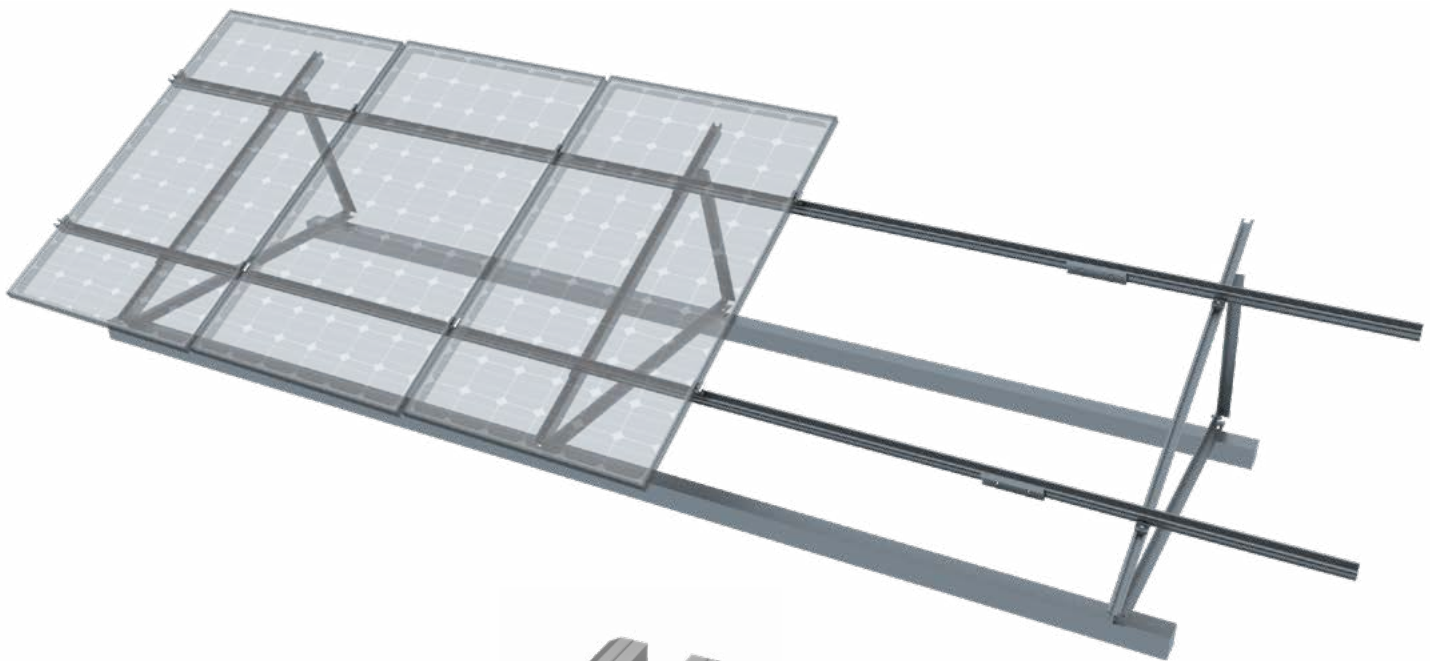


Technical Details

Module Orientation	Portrait or Landscape
Module Type	Framed Frameless
Wind Load	Customized
Roof Type	Tin Roof or Flat Roof
Tilt Angle	10°~30°
Material	Main Structure: AL6005-T5 Fasteners: SUS 304
Standard	ASCE 7-10 AS NZS1170.2-2011 EN1991 JISC8955-2017
Warranty	12 years

Main Benefits

- Fast and Easy Installation
- Cost Reduction
- Grounding/Earthing Function
- Universal Application



ER-EC-ST
End Clamp



ER-IC-ST/U18
Inter Clamp



ER-R-ECO
ECO Rail



ER-SP-ECO
Splice for ECO Rail



RC-ECO/G
Rail Clamp



ER-S-TRIL/S
Single Support (Pre-assembled)

PV-ezRack® Commercial Tilt

Brand New Ballast System for PV-module Installation on Flat Roof

The Clenergy PV-ezRack® Commercial Tilt offers easy and fast PV installation on flat roofs. With its flexible and scalable design it enables perfect utilization of roof surface available. With tilt angles of 5°, 10° or 15°, the PV panels can generate a maximum output.

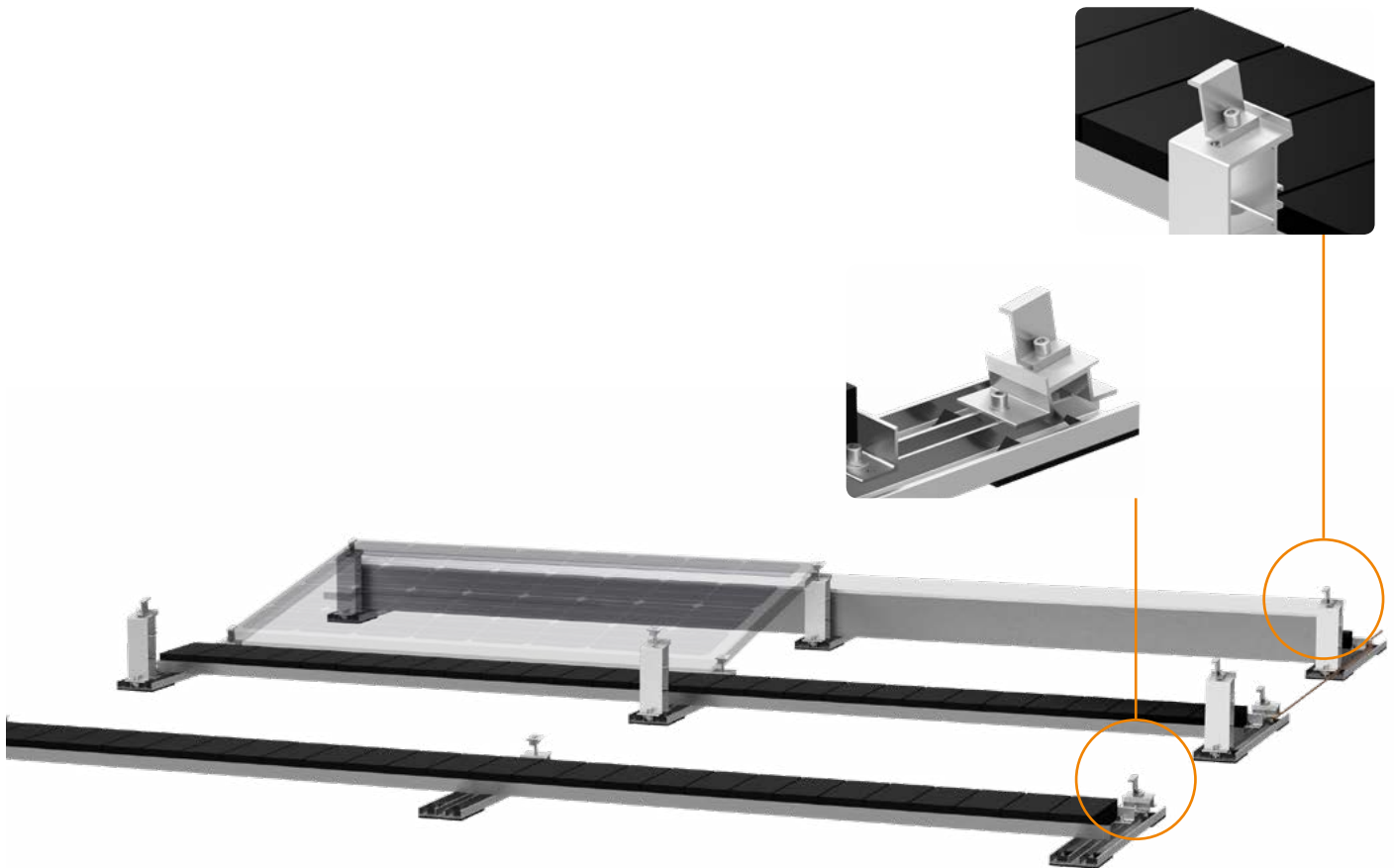


Technical Details

Module Orientation	Landscape
Module Type	Framed
Roof Type	Flat Roof
Tilt Angle	10°
Material	Main Structure: AL6005-T5 Fasteners: SUS 304
Standard	ASCE 7-10 AS NZS1170.2-2011 EN1991 JISC8955-2017
Warranty	12 years

Main Benefits

- Easy and Quick Installation
- Maximum Energy Output



FL-COMT/Z
Front Leg Assembly,
with Z-Module



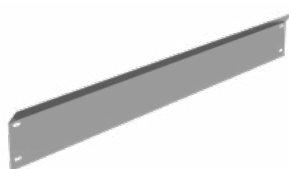
RL-COMT/Z
Rear Leg Assembly, with
Z-Module



BB-COMT
Ballast Base



BB-COMT
Ballast Bar

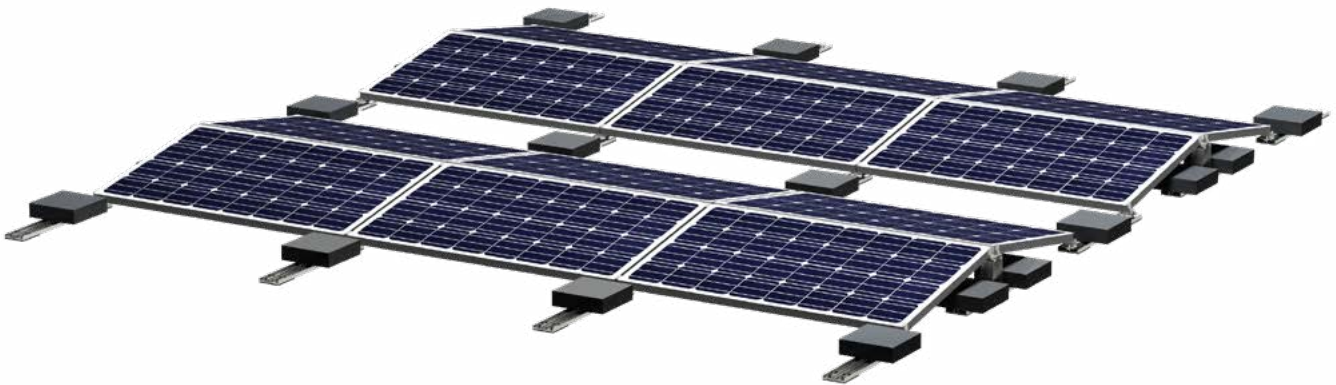


WD-COMT
Wind Deflector

PV-ezRack® Commercial Tilt East-West

Ballast System for PV Module Installation on Flat Roof

The Clenergy PV-ezRack® Commercial Tilt East-West is a low ballast, east/west facing solution without rails for PV installation in landscape orientation, which offers easy and fast PV installation on flat roofs. Compared with the traditional south facing solution, the east-west facing solution provides a smooth supply of power during the day, starting earlier and finishing later, so that more or all of the power generated is consumed on site. With no shading between rows, up to 40% of extra modules can be installed.

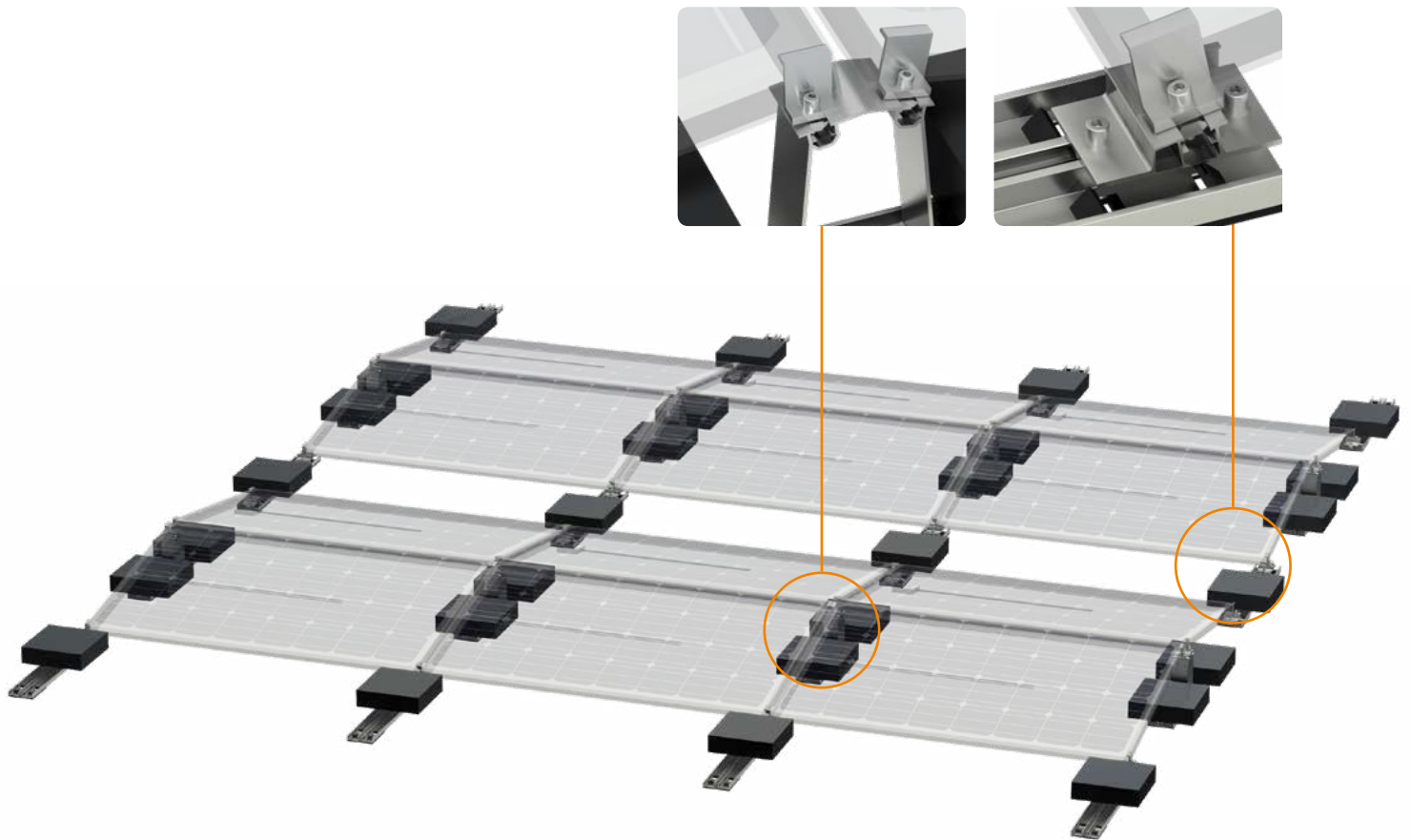


Technical Details

Module Orientation	Landscape
Module Type	Framed
Wind Load	Customized
Roof Type	Flat Roof
Tilt Angle	10°
Material	Main Structure: AL6005-T5 Fasteners: SUS 304
Standard	ASCE 7-10 AS NZS1170.2-2011 EN1991 JISC8955-2017
Warranty	12 years

Main Benefits

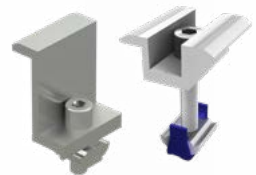
- Easy and Quick Installation
- Versatility
- Well-considered Design



FL-COMT/W/10/70
Front Leg Assembly, with
Z-Module



RL-COMT/W/EW/10
Rear Leg Assembly, with
Z-Module



ER-EC-W& IC-W/U18
End Clamp & Inter Clamp

PV-ezRack® SolarTerrace I

Galvanized Steel Ground Mounting Solution for Large Scale Projects

PV-ezRack® SolarTerrace I is an economic ground-mounting system suitable for commercial and utility scale PV installations. Manufactured from traditional hot dip galvanized steel with an average coating thickness of 65 microns (ASTM A123 standard) ensures a robust, reliable and economic system.



Technical Details

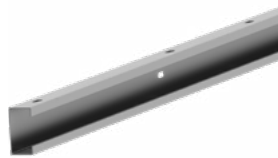
Module Orientation	Landscape or Portrait
Module Type	Framed Frameless
Wind Load	Customized
Tilt Angle	Customized
Foundation	Ramming/Ground Screw/Concrete
Material	Main Structure: Galvanized Steel Fasteners: HDGS
Standard	AS NZS1170.2-2011 EN1991 JISC8955-2017 ASCE 7-10
Warranty	12 years

Main Benefits

- Price Advantage
- Three Foundation Solutions Available



ER-EC-N& ER-IC-N
End Clamp, nut series & Inter
Clamp, nut series



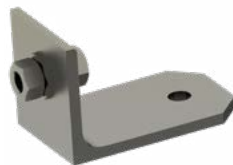
ER-R-C80/40
C Steel 80*40



EZ-GL-U
Grounding Lug



ER-RT-40
Rectangular Tube



ER-CN-100
Tie Rod Connector



EZ-GC-S
Grounding Clip



ER-AB-80/40
Angle Bracket for C-Steel
Rail 80*40



ER-TR
Tie Rod



GS-76-F9
Ground Screw with Three Nut Fixation
and Continuous Small Blade

PV-ezRack® SolarTerrace MAC

Magnesium Aluminum Zinc Coating Steel Ground Mounting Solution

PV-ezRack® SolarTerrace MAC is an economic ground-mounting system suitable for commercial and utility scale PV installations. Manufactured from the latest magnesium aluminum zinc coating steel with reliable corrosion resistance and elegant surface.

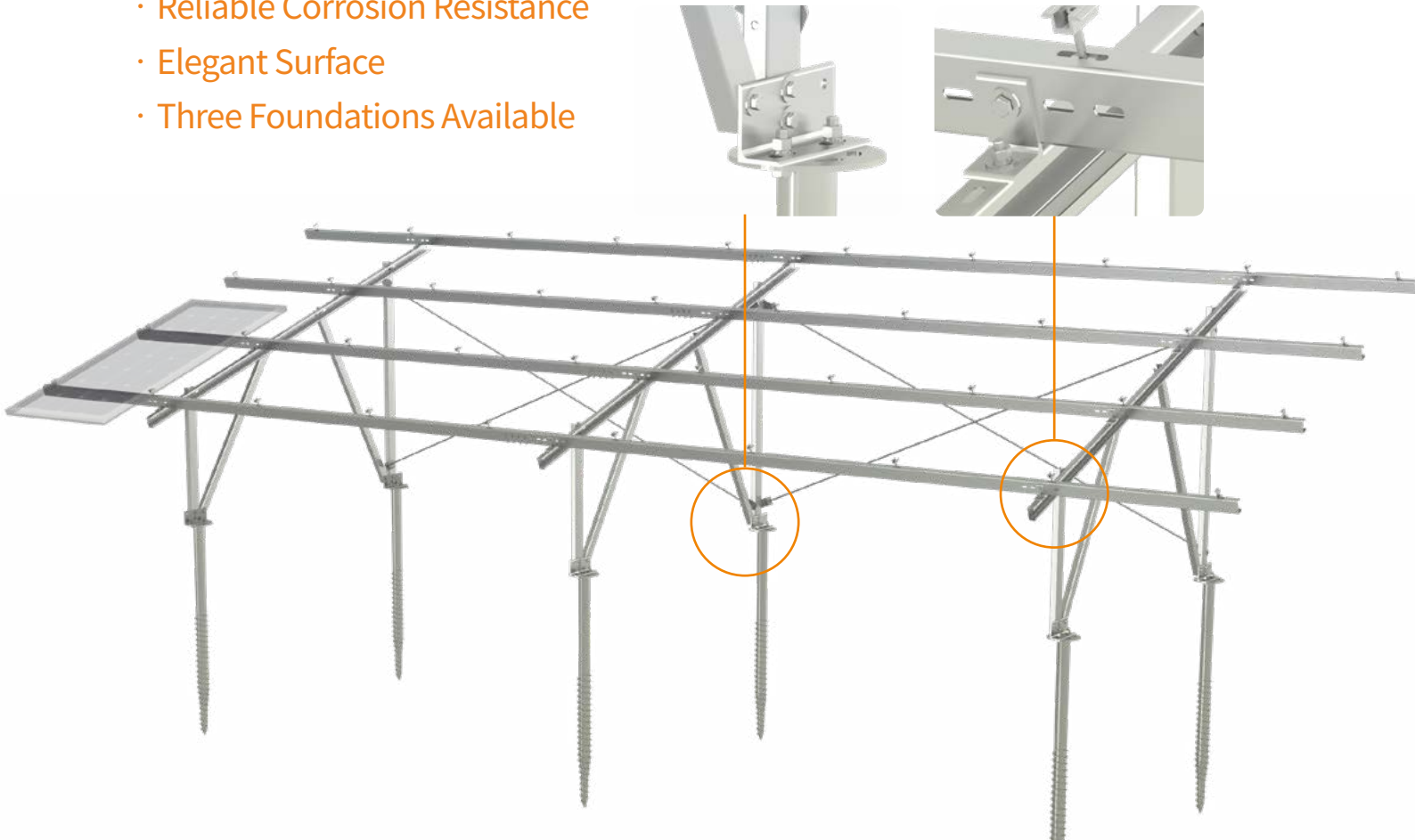


Technical Details

Module Orientation	Portrait or Landscape
Module Type	Framed Frameless
Wind Load	Customized
Tilt Angle	Customized
Foundation	Ramming/Ground Screw/Concrete
Material	Main Structure: Magnesium Aluminium Alloy Coating Steel Fasteners: HDGS
Standard	AS NZS1170.2-2011 EN1991 JISC8955-2017 ASCE 7-10
Warranty	12 years

Main Benefits

- Reliable Corrosion Resistance
- Elegant Surface
- Three Foundations Available



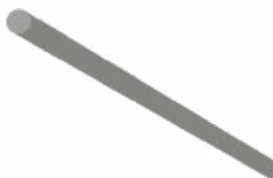
ER-EC-N & ER-IC-N/U18
End Clamp with nuts & Inter
Clamp with nuts



R-C80/40-P
Rail & Girder



R-C60/40-P
Support



ER-TR-P
Tie Rod



EZ-GL-U
Grounding Lug



EZ-GC-S
Grounding Clip

PV-ezRack® SolarTerrace Eco

Highly Pre-assembled Aluminum Ground Mounting System

PV-ezRack® SolarTerrace Eco (ST Eco) is a highly pre-assembled ground mounting system, suitable for commercial installation and utility installation. Innovative M-module channel Rails are very convenient and helpful to improve the installation precision. Using high quality engineered components, ST Eco is more suitable for areas with higher salinity, and significantly saves labor time and cost, especially delivering large scale projects.

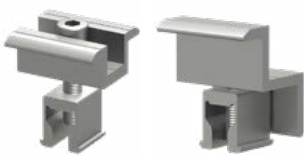
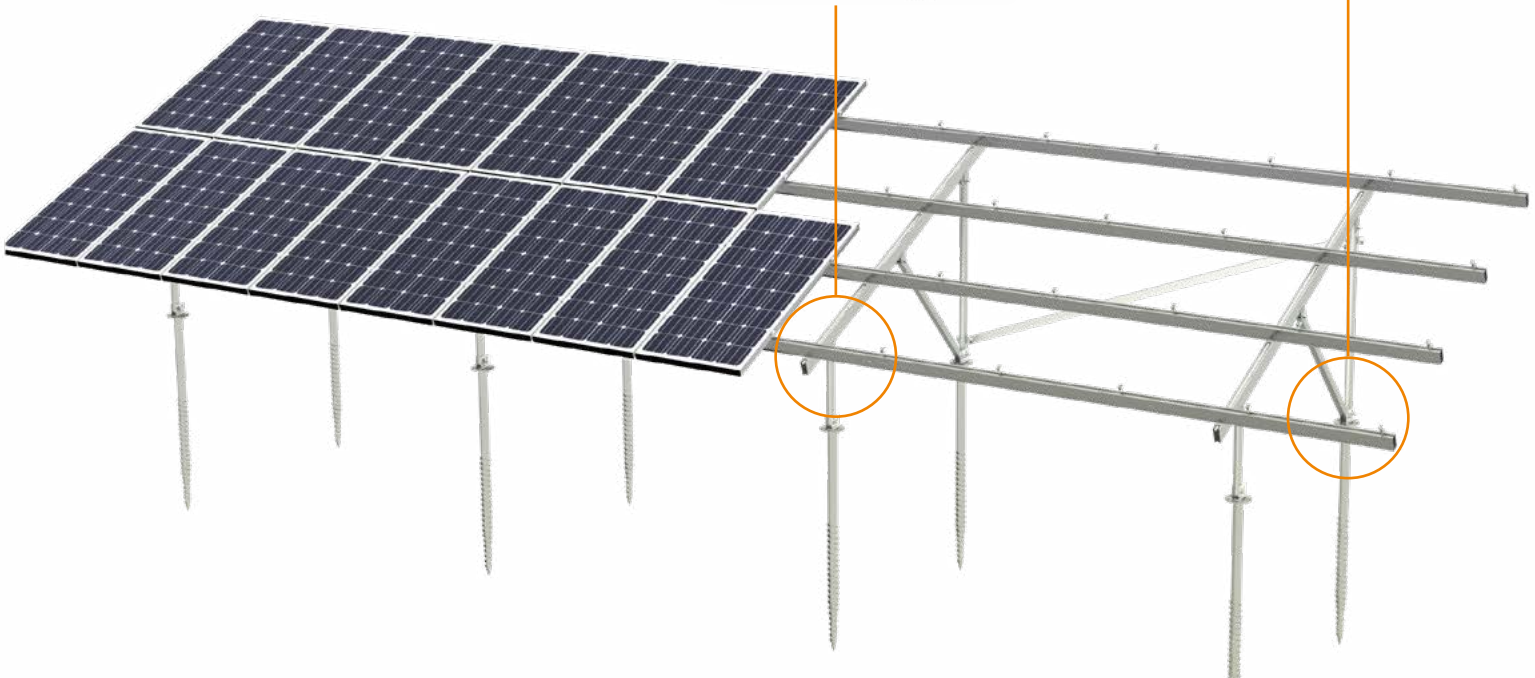


Technical Details

Module Orientation	Landscape or Portrait
Module Type	Framed Frameless
Wind Load	Customized
Tilt Angle	Customized
Foundation	Ground Screw Concrete
Material	Main Structure: AL6005-T5 Fasteners: SUS 304
Standard	AS NZS1170.2-2011 EN1991 JISC8955-2017 ASCE 7-10
Warranty	12 years

Main Benefits

- Excellent Corrosion Resistance
- Easy and Fast Installation
- Versatility



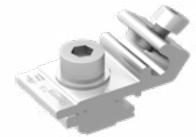
IC-M/U18& EC-M/OM
Inter Clamp, with M module &
End Clamp, with M-module



ER-RCII-W
Rail Clamp II



BR-STEco/EW
Adjustable East-west Bracket



EZ-GL-STII
Grounding Lug



ER-R-TM
TM Rail



EZ-GC-ST
Grounding Clip



S-Eco/N
N-shaped Support (pre-assembled)



S-Eco/W
W-shaped Support (pre-assembled)

EzTracker D Series

Horizontal Single-Axis Tracker with a Distributed System
& 2 x Portrait or 1 x Portrait Layout

EzTracker D series Horizontal single-axis tracking system has the characteristics of high system stability, strong terrain adaptability, and easy maintenance. The system adopts the "astronomical algorithm + closed-loop control" method to realize the system automatically tracks the position of the sun and improves the overall power generation of the solar farm. Compared with the fixed-tilt rack, the power generation can be increased by up to 20%. And it can be increased by 25-30% with the combination of Bifacial PV Module.



Certified by D-U-N-S



IEC 62817



Wind Tunnel Test



Main Benefits

Irregular Site Adaptability

With distributed actuation architecture, EzTracker D series can be flexibly used for hills and irregular terrains. While linked row systems need to pay attention to both north-south and east-west slopes, EzTracker D series offer complete freedom in east-west slope tolerance, and offer slope tolerance up to 10% to 20% to North-South direction, reducing the leveling work, and shortening the construction time.

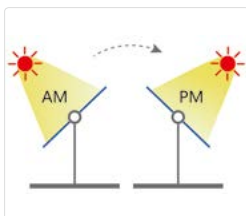
Multiple Configurations Available

EzTracker D series have a variety of optional configurations, allowing for choosing the best combination for each project. The power supply mode can be AC Grid Power Supply or DC Self-Power Supply; Communication mode can be cable RS485 communication or wireless Zigbee communication. Drive mode can be Slew drive or linear drive.

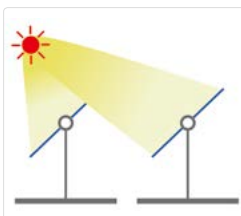
Easy Maintenance EzTracker

Clenergy designs EzTracker D series for easy maintenance in line with the principle of customer-orientation, with lubrication-free bearing, daily tracking calibration, a mobile app for commissioning, etc.

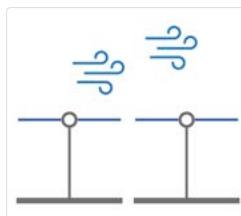
Work Mode



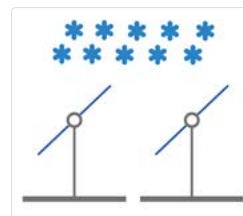
Standard Tracking Mode



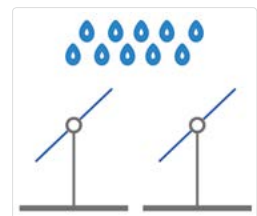
BackTracking Mode



Wind Protection Mode



Snow & Hail Protection Mode



Rain Cleaning Mode

D1P Technical Details

PV-Modules

PV-Modules supported	Fully compatible with 180-210 silicon wafers' PV-Module-500W*
-----------------------------	---

Structure

Type	Horizontal single-axis tracker
Maximum capacity per row	≤49kWp (Estimated with 545W PV-Modules)
PV-Modules quantity per row	90 PCS (1x90)
Tracking range	±60°
Tracking accuracy	±1°
Structural materials	HDG Steel, Al-Mg-Zn Coating Steel
Foundation	Steel pile, PHC pile, concrete foundation
Quantity of foundation/MW	Normally about 250 PCS/ MW (Estimated with 545W PV-Modules)

Electrical

Motor type	24V DC Motor
Motor quantity	1 motors per row
Drive method	Linear Drive/Slew Drive
Solar tracking method	Astronomical algorithm + closed-loop control
Control system	MCU
Data feed	Modbus over RS485
Signal transmission	Wire or wireless (Zigbee)
Backtracking	Yes
Manual operation	Yes
Power supply	Self-powered or grid-powered
Commission	By Mobile phone App
1000V System or 1500V System	Both Available

Protection Function

Night stow mode	Yes
Overheat prevention	Yes
Overload prevention	Yes
Troubleshooting Available	Yes (Driving Abnormally > Self-Diagnostics)

Environment

Wind load	Customisable according to local condition
Operating temperature	-30°C to +60°C

Civil and Installation

Slope tolerance	North-south 10%~20%, East-west no limits
Special tools	Not required

Other

System design standard	GBT29320-2012, IEC 62817
Load design standard	GB 50009, ASCE 7-05, ASCE 7-10 (according to project)

Application Range



Mountainous Area



Desert Area



Agriculture+PV Project



Fishery+PV Project

D2P Technical Details

PV-Modules

PV-Modules supported	Fully compatible with 180-210 silicon wafers' PV-Module-500W*
-----------------------------	---

Structure

Type	Horizontal single-axis tracker
Maximum capacity per row	≤65kWp (Estimated with 545W PV-Modules)
PV-Modules quantity per row	2x45 (Extendable to 2X60)
Tracking range	±60°
Tracking accuracy	±1°
Structural materials	HDG Steel, Al-Mg-Zn Coating Steel
Foundation	Steel pile, PHC pile, concrete foundation
Quantity of foundation/MW	Normally about 170 PCS/ MW (Estimated with 545W PV-Modules)

Electrical

Motor type	24V DC Motor
Motor quantity	2 motors per row
Drive method	Linear Drive
Solar tracking method	Astronomical algorithm + closed-loop control
Control system	MCU
Data feed	Modbus over RS485
Signal transmission	Wire or wireless (Zigbee)
Backtracking	Yes
Manual operation	Yes
Power supply	Self-powered or grid-powered
Commission	By Mobile phone App
1000V System or 1500V System	Both Available

Protection Function

Night stow mode	Yes
Overheat prevention	Yes
Overload prevention	Yes
Troubleshooting Available	Yes (Driving Abnormally > Self-Diagnostics)

Environment

Wind load	Customisable according to local condition
Operating temperature	-30°C to +60°C

Civil and Installation

Slope tolerance	North-south 10%, East-west no limits
Special tools	Not required

Other

System design standard	GBT29320-2012, IEC 62817
Load design standard	GB 50009, ASCE 7-05, ASCE 7-10 (according to project)

Test



Wind Tunnel Test



Mechanical Accelerated Test

PV-ezRack® ezShade 2.0

Solar Parking Solution for Commercial and Residential Projects

PV-ezRack® ezShade 2.0 is a solar parking solution providing solar panels support as well as car sheltering for residential and commercial projects. The high quality aluminum components and stainless steel fasteners ensure a robust and reliable system. With the exquisite structure design, the waterproof function is available without using a large amount of EPDM rubbers. Both silver anodized and black anodized options are available.

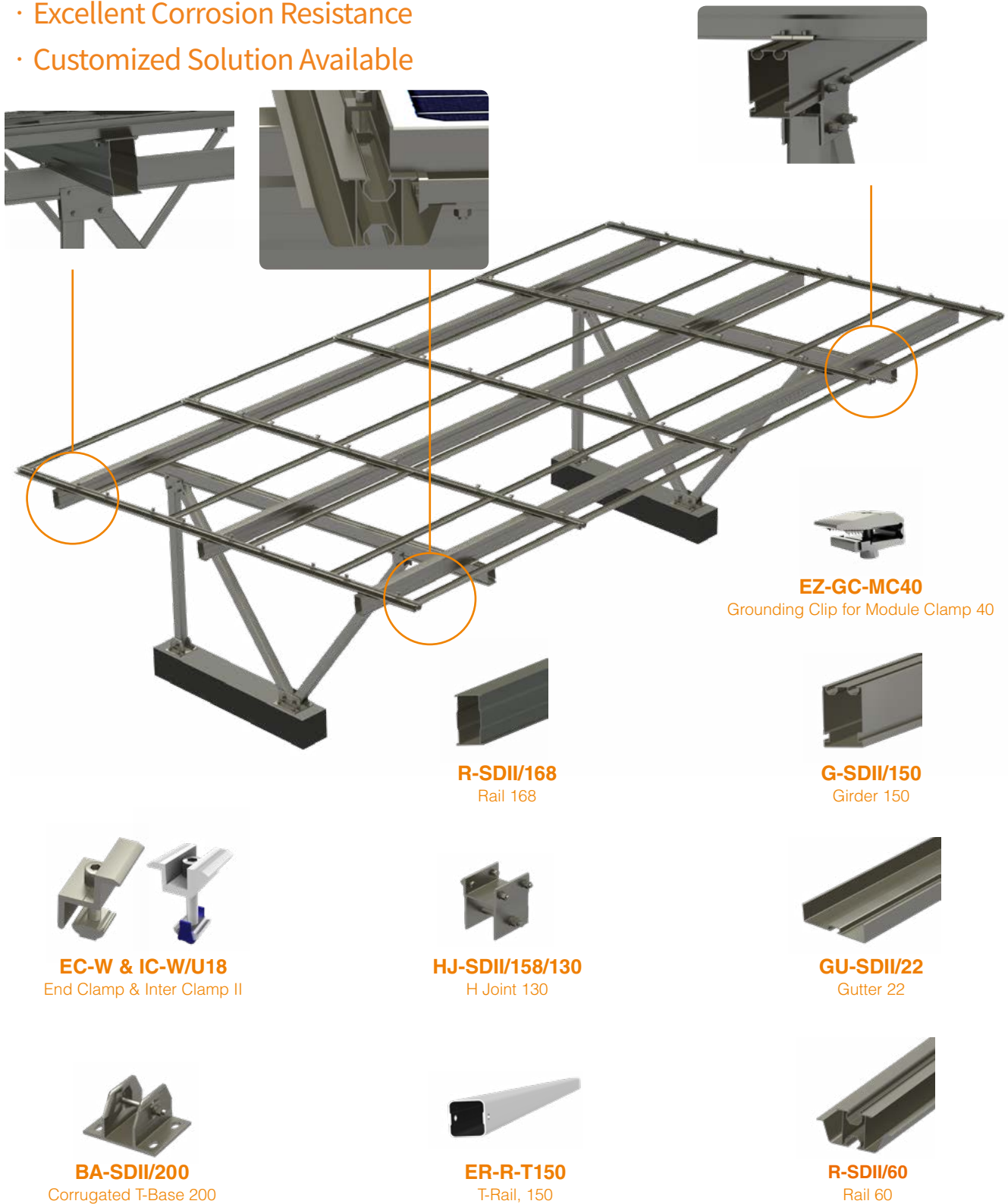


Technical Details

Module Orientation	Landscape or Portrait
Module Type	Both Framed and Frameless
Wind Load	Customized
Tilt Angle	5 ° or 10 °
Foundation	Concrete
Material	Main Structure: AL6005-T5 Fasteners: SUS 304
Standard	AS NZS1170.2-2011 EN1991 JISC8955-2017 ASCE 7-10
Warranty	12 years

Main Benefits

- Easy Installation
- Waterproof
- Excellent Corrosion Resistance
- Customized Solution Available



DC 1500V String Combiner Box

PV Combiner Box for Large Scale Projects

Description

Clenergy 1500VDC String Combiner Box is mainly designed for the 1500VDC PV power generation system. It can reduce the wire connections between the 1500VDC PV module and the distribution box, and for better maintenance and reliability of 1500VDC PV power generation system. The 1500VDC String Combiner Box is able to enhance the efficiency, safety and reliability of the system by monitoring status of components' output and providing system protection and fault alarm. Clenergy 1500VDC String Combiner Box is able to enhance the PV power generation system more efficiency and safety.



Features

- Up to 24 PV strings
- With 1500VDC Fuse, DC break and SPD
- Each channel has high precision sensors which detect input voltage and current
- PV(300VDC ~1500VDC) power supply optional for monitoring module , the power consumption<5w
- Reverse current detection and SPD status detection
- Alarm for over-current, over-voltage, current imbalance and SPD invalid
- Easy to set up the threshold value of over-current, over-voltage, imbalance of current and the baud rate
- Stainless steel enclosure with IP65 protection suitable for outdoor application
- Wireless communication, is compatible with the Modbus Protocol

Specification

Model	HSCB -xM	HSCB -x
Input		
Max. PV Input Voltage (VDC)	1500	
Max. Inputs of PV String	16~24	
Rated Fuse Current for Each String (ADC)	10/15/30 (Replaceable)	
Operating Voltage Range of the Monitoring Module	PV Power Supply:300~1500 VDC	NA
Input Terminal Type	4~6mm2	
Output		
Output Terminal Type	2*50~120mm2	
Communication and Alarming		
Communication	RS485	NA
Power Supply	PV Self-Powered optional	
Fault Alarm	Yes	
Alert of Over Current	Yes	
Alert of Over Voltage	Yes	
Alert of Imbalance Current	Yes	
Alert of Reverse Current	Yes	
Alert of SPD Failure	Yes	
Monitoring for Load Switch State	Yes	
Environment Suitability		
Temperature	-30℃ ~+60℃	
Humidity	0~95%, no condensation	
Protection Degree	IP65	
Mechanical Data		
Size (W×H×Dmm)	900*650*199	
Weight (Kg)	< 50kg	< 50kg

Integrated String Combiner Box

PV Fuse Box

Description

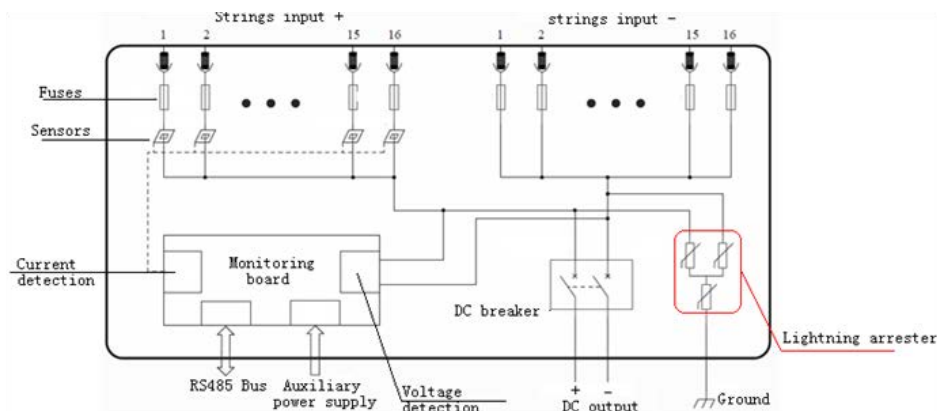
In order to reduce the wire connections between PV arrays and inverters, and for better maintenance and reliability of PV power generation system, a confluence device is usually needed. Based on years of design experiences, Clenergy developed ISCB series string combiner box. ISCB series string combiner box collects the multiple DC outputs from solar panels. With this advantage, the front connections in inverters are greatly reduced. In addition, ISCB is able to enhance the efficiency, safety and reliability of the system by monitoring status of components' output and providing system protection and fault alarm. By working with Clenergy grid connected inverters, the PV power generation system solution is completed and perfected.



Characteristics:

- Connect up to 16 strings of PV arrays at the same time
- Up to 1000VDC input voltage and maximum DC input current is 15A
- Each channel has a high precision sensor which detects input voltage and input current
- With high voltage fuse for PV system
- 100~1000VDC and 85~264VAC power supply optional
- Reverse current detection and SPD status detection
- Alarm for over-current, over-voltage, imbalance of current and SPD invalid
- Show the current, output voltage, address and the baud rate, easy to check
- RS485 interface, suit for remote data transmission
- Easy to set up the threshold value of over-current, over-voltage, imbalance of current and the baud rate
- Users can choose the configuration (Fuse, DC switch, Lightning arrester)
- Multiple power supply mode
- IP65 metal enclosure for outdoor installation
- Compact structure to occupy smaller space, easy to install

Principle Diagram



Specification

(Model: ISCBxy-z

Model description ISCB: Integrated String Combiner Box

x: the maximum input strings: 8/10/12/16,

y: with monitoring function, M is yes, blank is not.

z: type of power supply ,PV: PV power supply ; AC: AC power supply)

Model	ISCB8M-XX	ISCB8
Input		
Rated input voltage range	200-850VDC	
Max. Input voltage	1000VDC	
Rated DC current range for each channel:	0-12A	
Max. DC Current for Each Channel	15A	
Input Terminal	MB12-08	
DC Fuse		
Number of Fuse per String	1	
Number of the Fuse	8(per pole)	
DC.Over-Voltage alarm	Yes	No
DC.Over-Current Protection	Yes	
Output		
Rated Output Current	96A	
Output Terminal	MB25-18	
Grounding Terminal	MB16-10	

Communication and Mechanical		
Communication	RS485	No
Power Supply	100~1000VDC、 85~264VAC Optional	No
Fault Alarm	Yes	No
Operating Temperature	-30℃ ~+55℃	
Relativity Humidity	0~95%, non-condensing	
Protection Degree	IP65	
Size(H×W×D)	550×600×199mm	
Weight(Kg)	21.5	21
Certification	TUV, CQC Certification	

Model	ISCB10M-XX		ISCB10
Input			
Rated input voltage range	200-850VDC		
Max. Input voltage	1000VDC		
Rated DC current range for each channel:	0-12A		
Max. DC Current for Each Channel	15A		
Input Terminal	MB12-08		
DC Fuse			
Number of Fuse per String	1		
Number of the Fuse	10(per pole)		
DC.Over-Voltage alarm	Yes	No	
DC.Over-Current Protection	Yes		
Output			
Rated Output Current	120A		
Output Terminal	MB25-18		
Grounding Terminal	MB16-10		
Communication and Mechanical			
Communication	RS485	No	
Power Supply	100~1000VDC、 85~264VAC Optional	No	
Fault Alarm	Yes	No	
Operating Temperature	-30℃ ~+55℃		
Relativity Humidity	0~95%, non-condensing		
Protection Degree	IP65		
Size(H×W×D)	550×600×199mm		
Weight(Kg)	22	21.5	
Certification	TUV, CQC Certification		

Model	ISCB12M-XX		ISCB12
Input			
Rated input voltage range	200-850VDC		
Max. Input voltage	1000VDC		
Rated DC current range for each channel:	0-12A		
Max. DC Current for Each Channel	15A		
Input Terminal	MB12-08		
DC Fuse			
Number of Fuse per String	1		
Number of the Fuse	12(per pole)		
DC.Over-Voltage alarm	Yes	No	
DC.Over-Current Protection	Yes		
Output			
Rated Output Current	144A		
Output Terminal	MB25-18		
Grounding Terminal	MB16-10		
Communication and Mechanical			
Communication	RS485	No	
Power Supply	100~1000VDC、 85~264VAC Optional	No	
Fault Alarm	Yes	No	
Operating Temperature	-30℃ ~+55℃		
Relativity Humidity	0~95%, non-condensing		
Protection Degree	IP65		
Size(H×W×D)	550×600×199mm		
Weight(Kg)	22.5	22	
Certification	TUV, CQC Certification		

Model	ISCB16M-XX		ISCB16
Input			
Rated input voltage range	200-850VDC		
Max. Input voltage	1000VDC		
Rated DC current range for each channel:	0-12A		
Max. DC Current for Each Channel	15A		
Input Terminal	MB12-08		
DC Fuse			
Number of Fuse per String	1		
Number of the Fuse	16(per pole)		
DC.Over-Voltage alarm	Yes	No	
DC.Over-Current Protection	Yes		
Output			
Rated Output Current	192A		
Output Terminal	MB25-18		
Grounding Terminal	MB16-10		
Communication and Mechanical			
Communication	RS485	No	
Power Supply	100~1000VDC、 85~264VAC Optional	No	
Fault Alarm	Yes	No	
Operating Temperature	-30℃ ~+55℃		
Relativity Humidity	0~95%, non-condensing		
Protection Degree	IP65		
Size(H×W×D)	550×600×199mm		
Weight(Kg)	23.5	23	
Certification	TUV, CQC Certification		

N.B.:Technical parameters and independent of the configuration



Thailand

Boonthavorn, **10MW**
SolarRoof



Thailand

4MW
SolarRoof



Thailand

Khonkhen, **5MW**
SolarRoof



Thailand

Korat, **5MW**
EzTracker



Thailand

Nakorn-Rajsima, **5MW**



Thailand

Udonthani, **5MW**
EzTracker



Thailand **2MW**
SolarRoof



Thailand Pathumthani, **1.2MW**
SolarRoof



Thailand **Korat, 1MW**
SolarRoof



Thailand **Lampang, 1MW**
SolarRoof



Thailand **Nakornpathom, 1MW**
SolarRoof



Thailand **Lamphun, 1MW**
SolarRoof



China

36MW
SolarRoof



China

Anhui, **7.6MW**
SolarRoof



Philippines

4.77MW
SolarRoof



UK

3.8MW
Trapezoidal



Thailand

Rayong, **3.3MW**
SolarRoof



Philippines

2.88MW
SolarRoof



Vietnam Krong-pa and Tay Ninh, **138MW**
STI Commercial



Vietnam Khanh Hoa, **100MW**
STI Commercial



Vietnam Ninh Thuan, **80MW**
ST Eco



China Weifang, **60MW**
STI Animal Husbandry



Japan **52MW**
STV



Japan **51MW**
ST II-A



US

38.7MW
STII-A



Philippines

20MW
STI Commercial



China

Inner Mongolia, **20MW**
STI Commercial



China

Shandong, **20MW**
STI Commercial



South Korea

9MW
ST Eco



Thailand

Nakornsawan, **8MW**
STI Agriculture



Thailand

Ratchaburi, **8MW**
STI Commercial



Thailand

Sainoi, **5MW**
STI Agriculture



Thailand

Ayuttaya, **5MW**
STI Agriculture



China

Weinan, Shanxi, **55MW**
EzTracker



Vietnam

37.5MW
EzTracker



China

Shangrao, **11MW**
EzTracker



Philippines **20MW**
STI Commercial



USA **Hawaii 7.8MW**
STII



Australia **1.7MW**
STI Commercial



China **Hainan, 20MW**
STI Commercial



Thailand **Chonburi, 1MW**
EzTracker



Thailand **Korat, 1MW**
SolarRoof

Clenergy Australia

1/10 Duerdin Street, Clayton VIC 3168 Australia
Tel: +61 3 9239 8088 Fax: +61 3 9239 8024
E-mail: sales@clenergy.com.au
www.clenergy.com.au

Clenergy China

999-1009 Min'an Rd, Huoju Hi-tech Ind. Dev. Zone
Xiang'an District 361101, Xiamen, Fujian, China
Tel: +86 592 311 0088 Fax: +86 592 599 5028
E-mail: sales@clenergy.com.cn
www.clenergy.com.cn

Clenergy EMEA

Esplanade 41, 20354 Hamburg, Germany
Tel: +49 (0) 40 3562 389 00
E-mail: sales.emea@clenergy.com

Clenergy Japan

Nittochi Yamashita Building 5th Floor
23 Yamashita-cho, Yokohama, 231-0023 Japan
Tel: +81 45 228 8226 Fax: +81 45 228 8316
E-mail: sales@clenergy.co.jp
www.clenergy.jp

Clenergy Philippines

145 Yakal St., San Antonio village, Makati City, Philippines
Tel: +63 977 8407240
E-mail: sales_ph@clenergy.com
www.clenergy.ph

Clenergy Thailand

9/2, 5th Floor, Vorasin Building, Soi Yasoob 2, Viphavadee-Rungsit Road, Chomphon Sub-district, Chatuchak District, Bangkok 10900
Tel: +66 (0) 2 277 5201, +66 (0) 6 3228-0200
E-mail: sales_th@clenergy.com, support_th@clenergy.com
www.clenergythailand.com

Clenergy Singapore

24 Raffles Place #28-01 Clifford Centre Singapore 048621
Tel: +65 9743 1425
E-mail: vincent.chan@clenergy.com

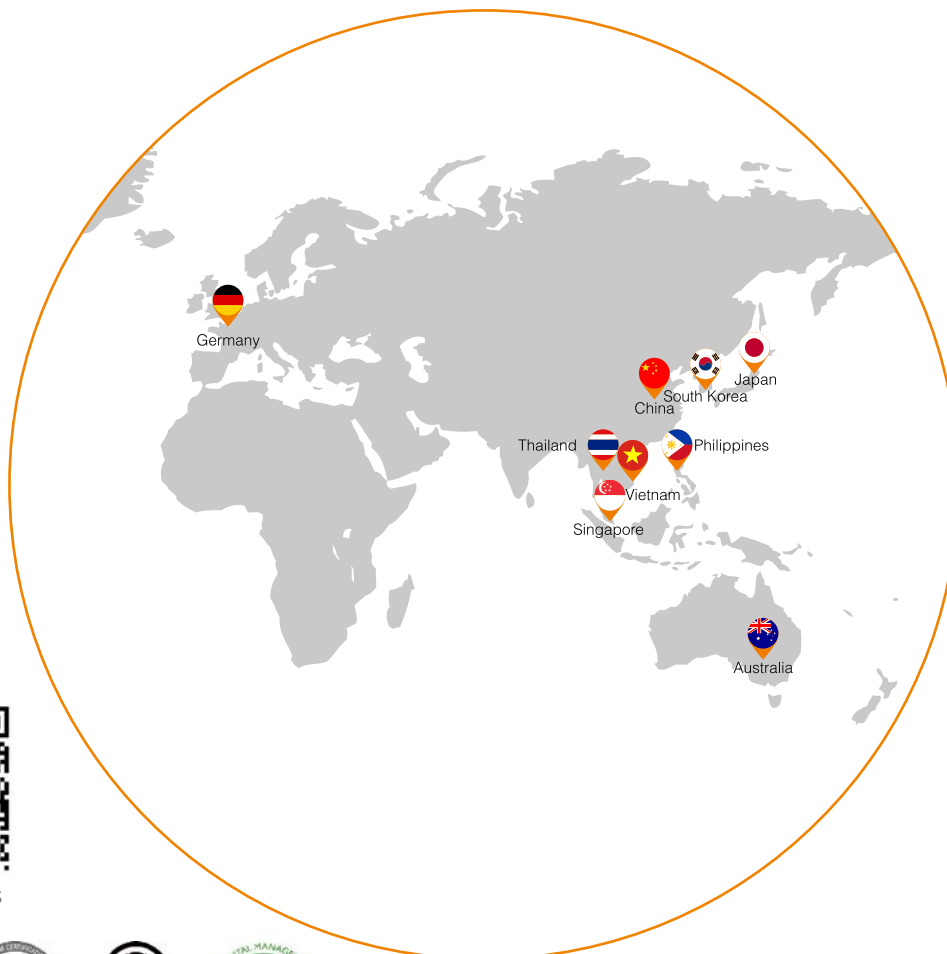
Clenergy Malaysia

Tel: +86 18750231005
E-mail: sales_em@clenergy.com

Clenergy Vietnam

Tel: +86 592 3110095
E-mail: sales_vietnam@clenergy.com;
susie.chen@clenergy.com

WORLDWIDE NETWORK



More Products



Clenergy Mounting System Catalogue - 202009