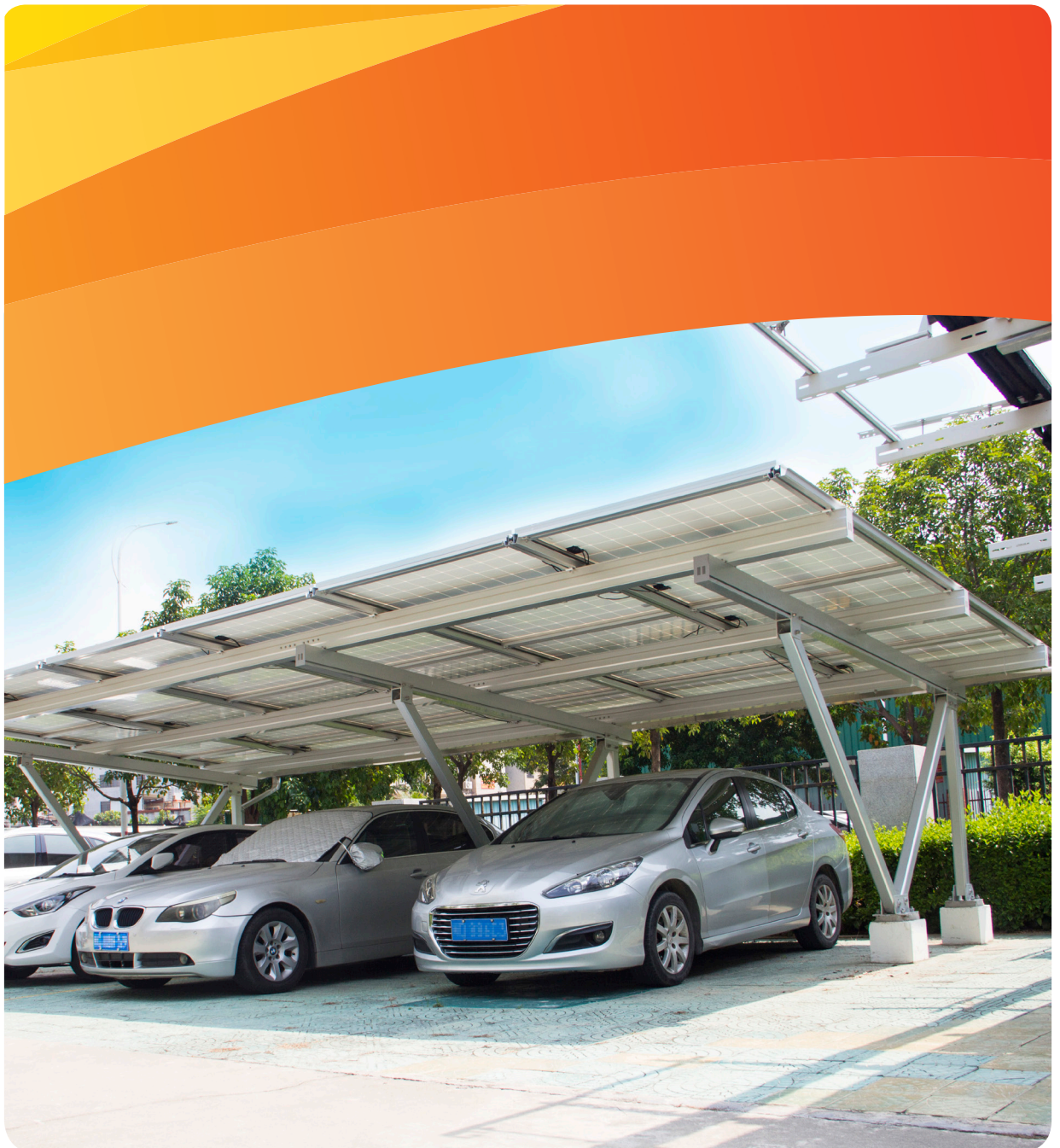


PV-ezRack®

By Clenergy 

EzShade 2.0

Installation Guide V1.1



1. Introduction

Clenergy PV-ezRack® ezShade 2.0 is a ground mounting system for PV installation in residential or commercial regions, and which is designed to create new spaces for solar energy while also providing shade for parking. The use of patented aluminium base rails, the Z-module technology and the splicing eliminate on site cutting and enables particularly fast installation.

Please review this manual thoroughly before installing ezShade 2.0. This manual provides the following contents: (1) Installation planning; (2) Installation instructions.

List of Contents

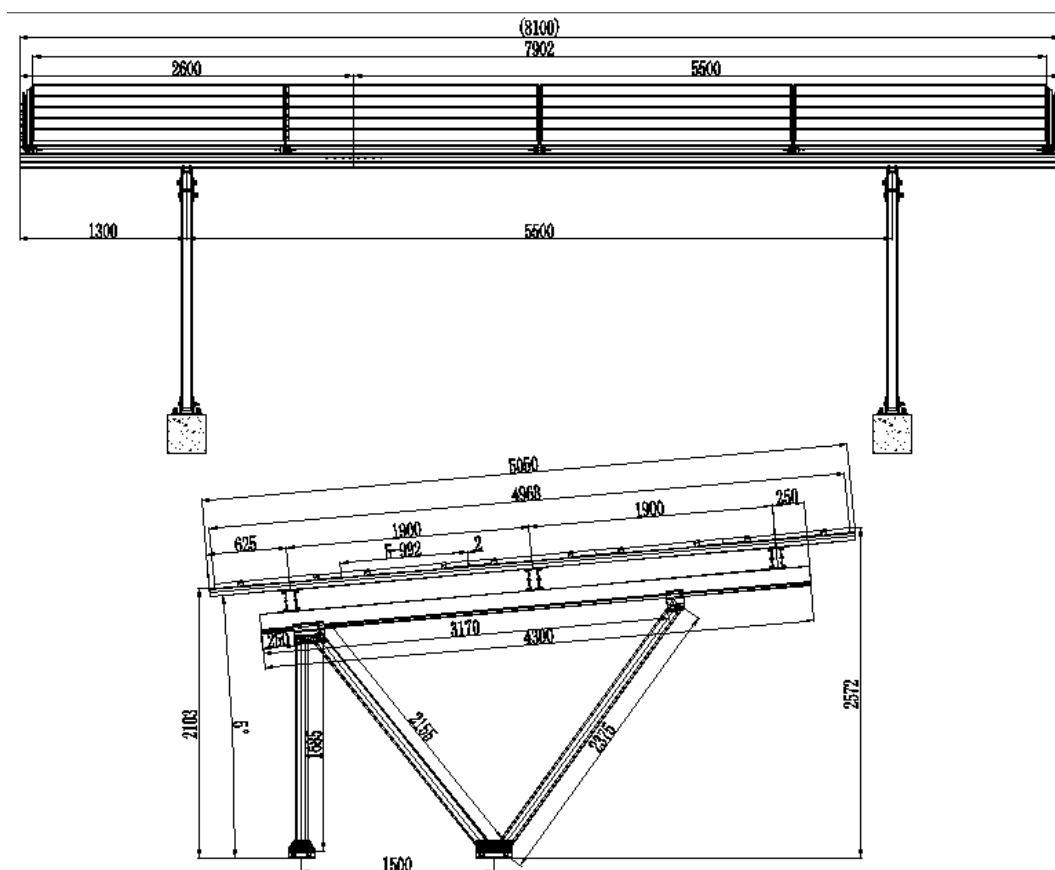
Introduction	01
Planning	02
Tools & Components	03
System Overview	05
Installation Instruction	08

The PV-ezRack® ezShade 2.0 parts, when installed in accordance with this guide, will be structurally adequate and meet the GB50009-2012, JIS8955, EURCODE 0-9, ASCE7-10, ISO 14713 standard. During installation, and especially when working on the ground, please comply with the appropriate occupational health and safety regulations. Please also pay attention to other relevant regulations in your local region. Please check that you are using the latest version of the installation manual by contacting Clenergy via email on sales@clenergy.com.cn or contacting your local distributor.

The installer is solely responsible for:

- Comply with all applicable local or national building codes that may replace this manual;
- Ensure that ezRack and other products are appropriate for the particular installation and installation environment;
- Using only ezRack parts and installer-supplied parts as specified by ezRack (substitution of parts may void the warranty and invalidate the letter of certification);
- During construction, ensure that the foundation anchor bolts have sufficient strength and shear force;
- How to recycle: according to local regulations;
- How to disassemble: reverse installation process;
- Ensure that there are no less than two professionals working on the panel installation;
- Ensure the installation of the electrical equipment is performed by a professional and accredited electrician.

2. Planning



According to the figure above, applying PV module 1960x992x35mm, tilt angle 5 degree. The MAX height from the ground is 2572mm. The specific installation steps are as follows.

Tools & Components

3. Tools and Components

3.1 Installation Tools

Allen Key 6mm

(M8 hex
socket
screw)



Electric Drill

(ST6.3 self-
drilling screw
and M8
hex socket
screw)



5m Tape



Torque Wrench



(M8/M12/M16)

String



Mark Pen



Socket Wrench
M8/M12



Rubber hammer



Caulking Gun

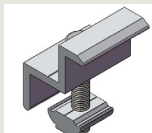


Note: The tools shown are only for installation of support system (not included in the scope of supply), please contact the system installer for electronic component installation tools.

3.2 Components

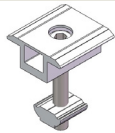
ER-EC-W40/OM

LS Module End Clamp,
with W module



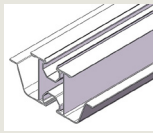
ER-ICII-W

Inter Clamp II,
with W module



R-SDII/60/5050

Rail 60*5050mm



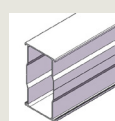
ER-RC-T/W

Rail Clamp for T-Rail
with W module



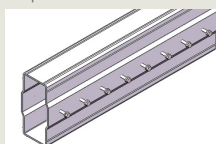
R-SDII/168

Rail 168



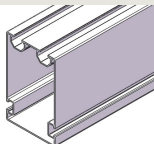
SP-SDII/R/168

Splice for Rail 168



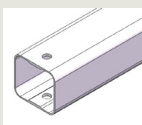
G-SDII/150/4300

Girder 150*4300



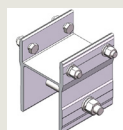
RT-100/90

Rectangular
Tube 100*90



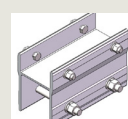
HJ-SDII/158/130

H Joint 130



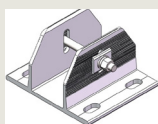
HJ-SDII/158/240

H Joint 240



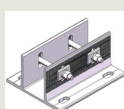
BA-SDII/200

Corrugated
T-Base 200



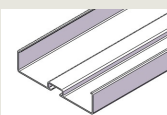
BA-SDII/280

Corrugated
T-Base 280



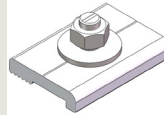
GU-SDII/22/1913

Gutter 22*1913



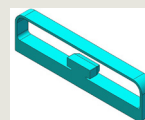
C-SDII/50/35

Corrugated Clamp



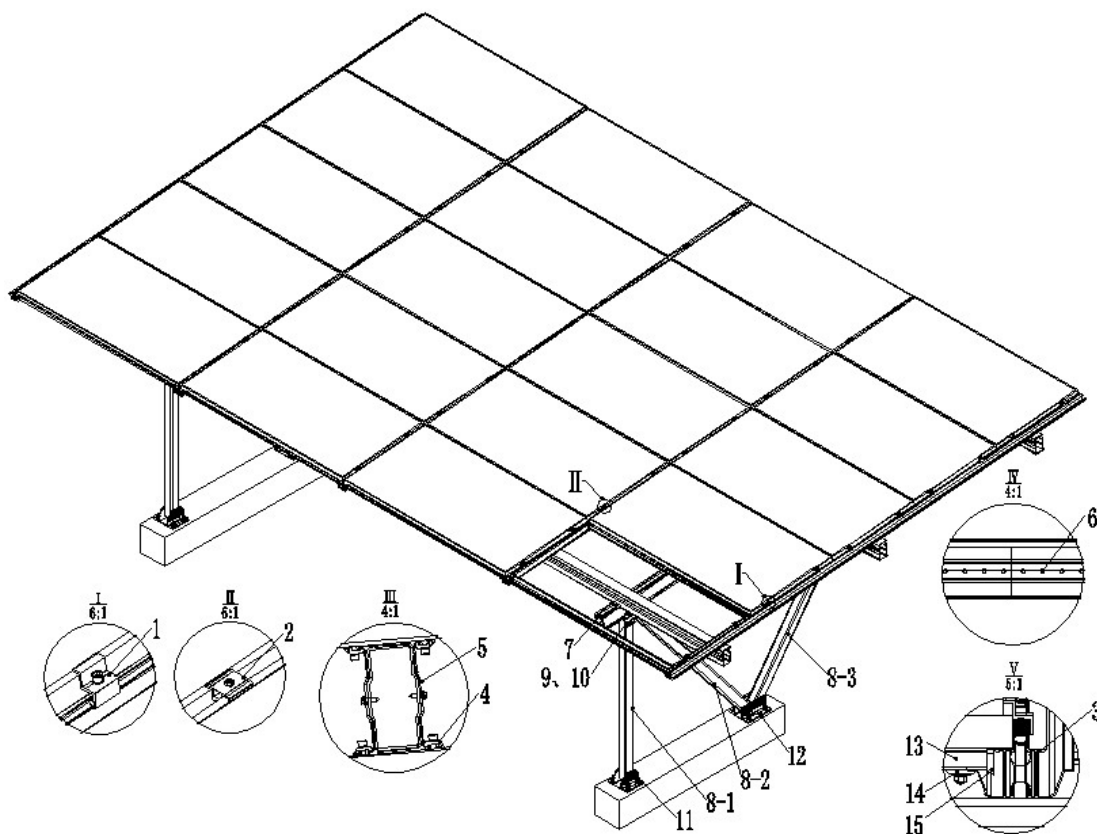
RR-GU/SDII/22

Rubber ring for
Gutter 22



4. System Overview

4.1 Overview of PV-ezRack ezShade 2.0



- ① ER-EC-W40/OM, LS Module End Clamp, with W modul
- ② ICII-W40-42/A, Inter Clamp, with W module
- ③ R-SDII/60/5050, Rail 60*5050mm
- ④ ER-RC-T/W, Rail Clamp for T-Raill with W module
- ⑤ R-SDII/168, Rail 168
- ⑥ SP-SDII/R/168, Splice for Rail 168
- ⑦ G-SDII/150/4300, Girder 150*4300
- ⑧ RT-100/90, Rectangular Tube 100*90
- ⑨ HJ-SDII/158/130, H joint 130
- ⑩ HJ-SDII/158/240, H joint 240

- ⑪ BA-SDII/200, Corrugated T-Base 200
- ⑫ BA-SDII/280, Corrugated T-Base 280
- ⑬ GU-SDII/22/1913, Gutter 22*1913
- ⑭ C-SDII/50/35, Corrugated Clamp
- ⑮ RR-GU/SDII/22, Rubber ring for Gutter 22

4.2.2 Precautions during Stainless Steel Fastener Installation

Improper operation may lead to deadlock of Bolts and Nuts.

The below steps should be applied to every stainless steel nut and bolt assembly to reduce this risk.

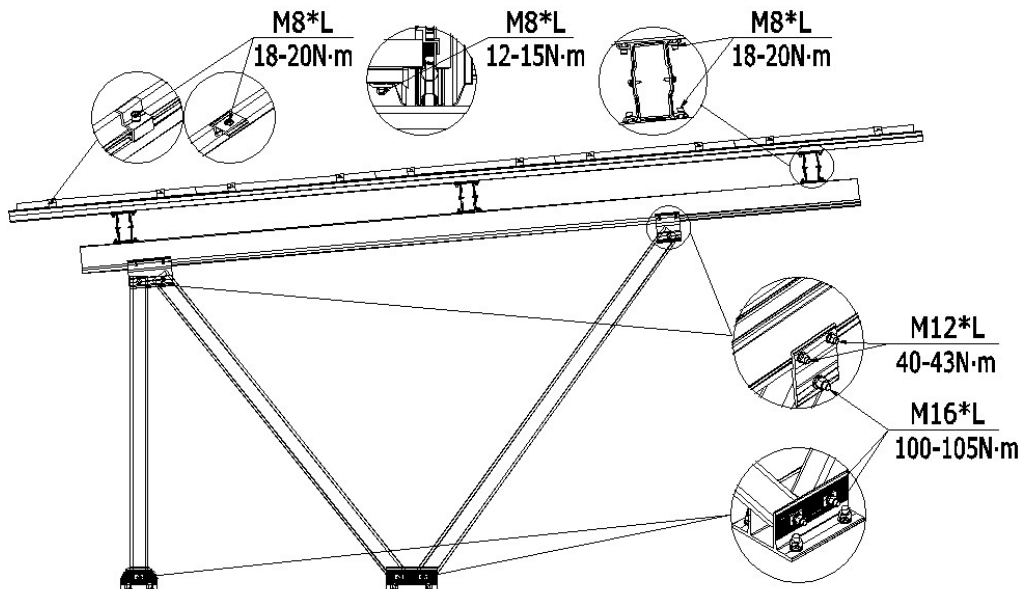
4.2.1 Reduce the friction coefficient:

- ① Ensure that the thread surface is clean (no dirt or contaminant)
- ② Apply lubricant (grease or 40# engine oil) to fasteners prior tightening to avoid galling or seizing in the threads;

4.2.2 General installation instructions:

- ① Apply force to fasteners in the direction of thread;
- ② Apply force uniformly, to maintain required torque;
- ③ Professional tools and tool belts are recommended, avoid using electric tools for final tightening;
- ④ Avoid working at high temperatures,

4.2.3 Safe Torques



Note: Tighten the bolts after adjusting all components in place. Tightening and loosening bolts repeatedly will lead to deadlock of bolts.

4.3 Installation Dimensions

All drawings and dimensions in this installation guide are for a generic reference. The PV-ezRack® ezShade 2.0 is to be optimized to suit specific conditions for each project and documented in a construction drawing. As a result, major components of the PV-ezRack® ezShade 2.0 may be provided in section sizes and lengths that vary from those shown in this guide. The installation process detailed in this instruction guide remains the same regardless of the component size. In case you need to do any on-site modifications or alteration of the system in a way that would be different from the construction drawing please provide marked up drawings/sketches for Clenergy's review prior modification for comment and approval.

Installation Instruction

5. Installation Instruction

5.1 Post and Girder Installation

5.1.1

Prepare the required installation tools and products before installation.

As per engineering drawings, mark out the positions for bolts and embed 4pcs of M20 bolt in each position as shown in Figure 2.

Make sure all M20 bolts are aligned in both horizontal and vertical direction. All embedded bolts will be revealed $50\pm 5\text{mm}$ above the ground as shown in Figure 1.

Note: The M20 bolts and matching nuts, washers and spring washers are provided by installer.

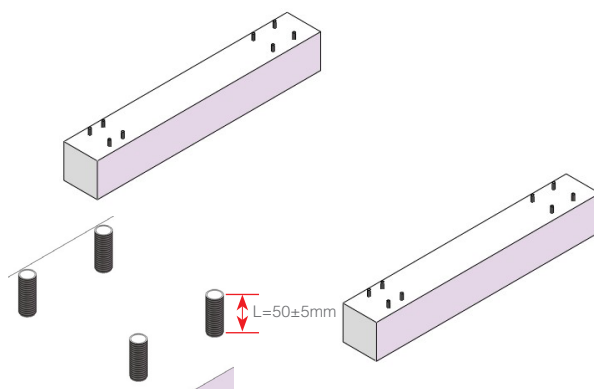


Figure. 1

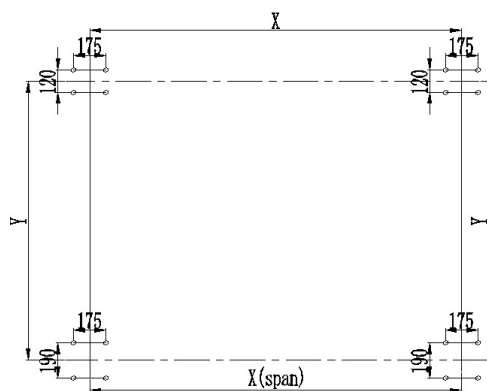


Figure. 2

5.1.2

As shown in Figure 3, place bolts M12*35 into H Joint 130/240.

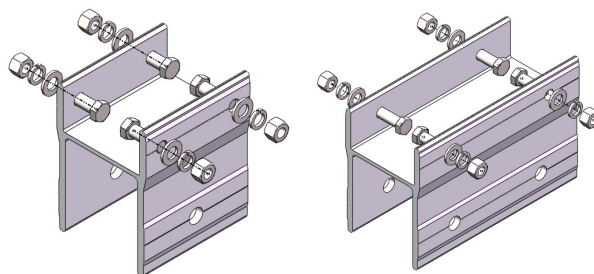


Figure. 3

According to the engineering drawing, slide H Joint 130/240 to the corresponding position on the Girder and lock it as shown in Figure 4.

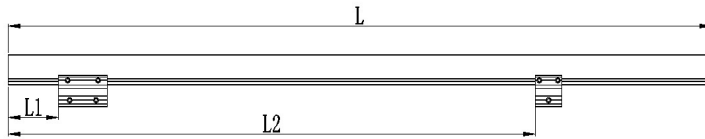


Figure. 4

For sliding smoothly, to ensure the plane of the M12 bolt cap be parallel to the Girder slot surface when H Joints slide into the Girder, as shown in Figure 5.

Recommended torque for M12 bolts is 40-43N·m

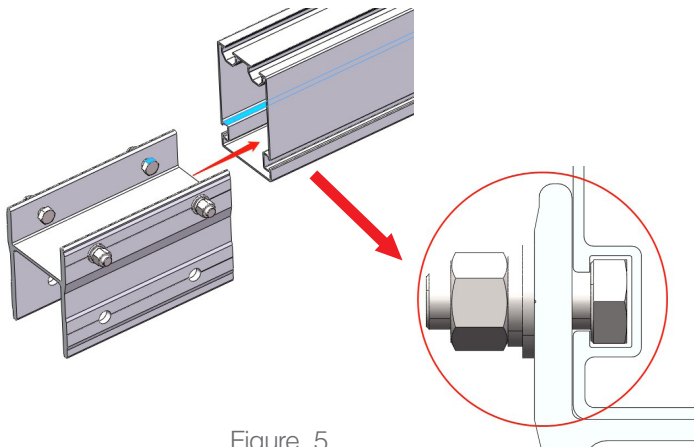


Figure. 5

5.1.3

According to the engineering drawing, place different length Rectangular Tube 100*90 and T Base 200/280 by below steps, as shown in Figure 6.

- ① Place the Rectangular Tube L1 horizontally to align with the hole of H Joint 240 near the end of girder , place bushing in one hand and put on bolts M16*130 in the other hand, then put on flat washers, spring washers, nuts and lock manually.
- ② Laying down the Rectangular Tube L2, and follow step ① to complete the other hole installation of H Joint 240.

Installation Instruction

③ Keep the Rectangular Tube flat, put the Tube L2 and Tube L3 into the Corrugated T-Base 280, align with the hole position, then put on bolts M16*150, bushings, flat washers, spring washers and lock manually.

④ Keep the Tube L1 flat, install the other hole with Corrugated T-Base 200.

⑤ Laying down the support, rotate Tube L2 and Tube L3, align the hole of Tube L3 with the hole of H Joint130, put on bolts M16*130.

The above steps are all locked manually.

Note: Install the Trapezoidal Shim in the middle of the slot hole of the T-Base for subsequent adjustment.

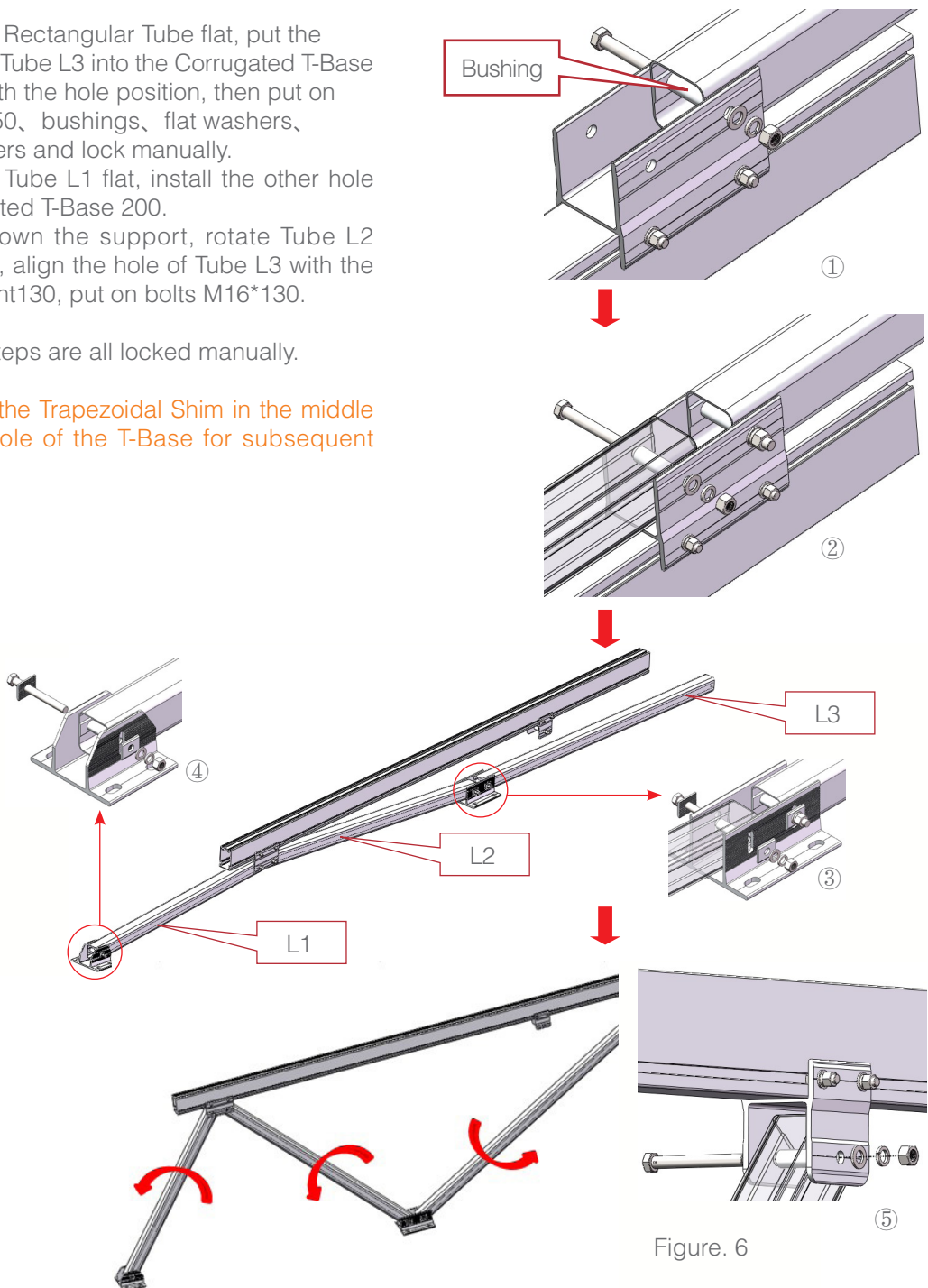


Figure. 6

Installation Instruction

Keep all M16 bolt heads aligned.

The support is complete as shown in Figure 7

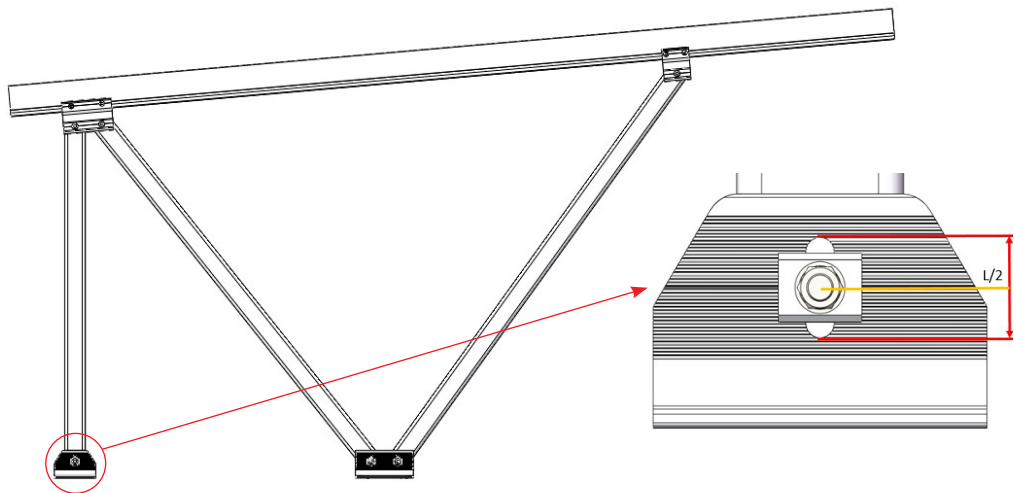


Figure. 7

5.1.4

Insert the assembled support into embedded bolts. Align the embedded bolts with the holes on the T-Base, put on the spring washer, flat washer and nut, manual locking as shown in Figure 8.

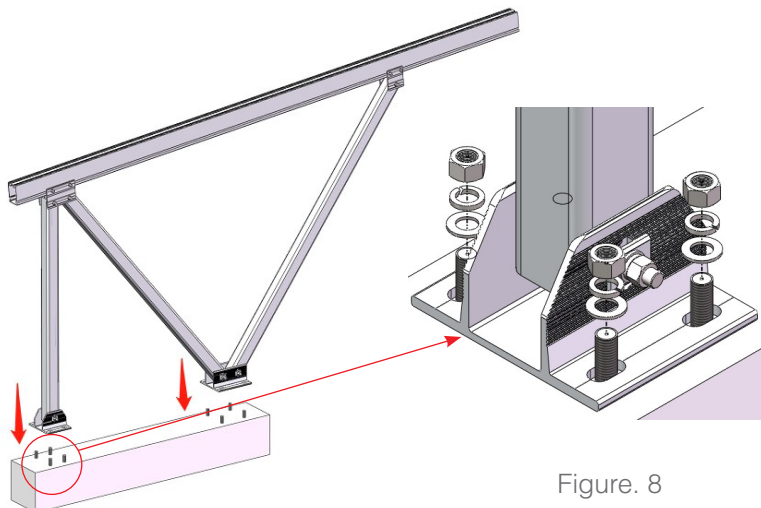


Figure. 8

5.1.5

After placing an array support. Measure whether all the end faces and top surfaces are on the same plane and whether the installation angle meets the requirements. as Shown in Figure 9.

Adjust the slot holes of T-base to meet the requirements if there is deviation.

The adjustment range of the slot hole of T-Base as shown in Figure 10.

Fasten all bolts after adjustment.

Recommended torque for M16 bolts is 100-105 N·m, M20 is 200-220 N·m.

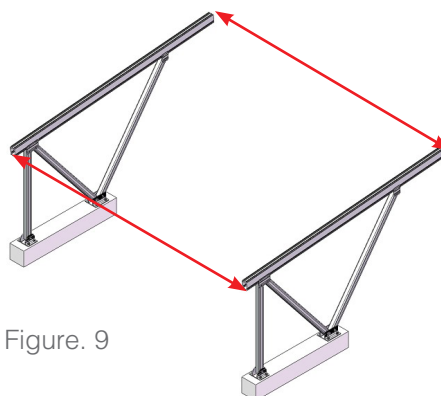


Figure. 9

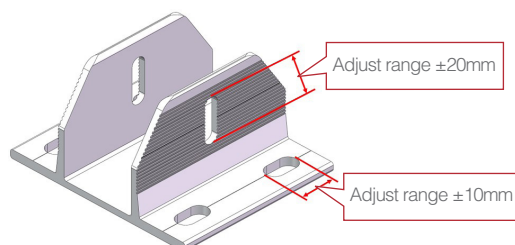


Figure. 10

5.2 Rail 168 Installation

5.2.1

5.2.1 In order to form a longer section, first insert Splice halfway into end of T-Rail 168, and fasten by self-drilling screws as shown in Figure 11.

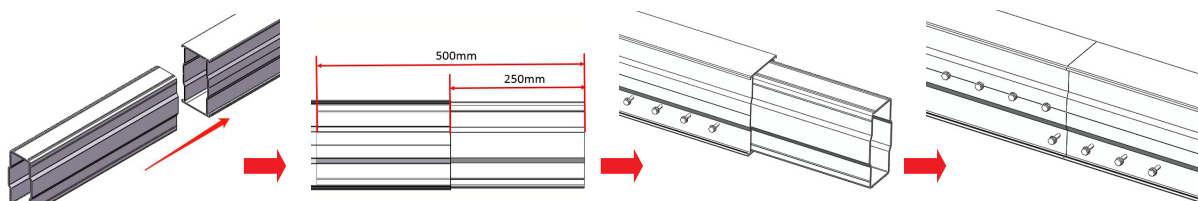


Figure. 11

Installation Instruction

Note: The position of self drilling screw ST6.3*22 for connection as shown in Figure 12(unit:mm), total 16pcs on both sides. Tighten until the plastic pads are slightly compressed.

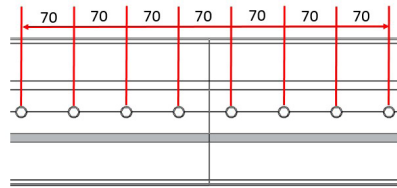


Figure. 12

5.2.2

Place one T-Rail 168 on Girder as shown in Figure 13.
Apply Rail Clamp to fix the T-Rail on Girder and fasten it by Allen Key.

Note: Apply two Rail Clamps for T-Rail on each side as shown in Figure 13
Recommended torque for M8 bolts is 18-20 N·m

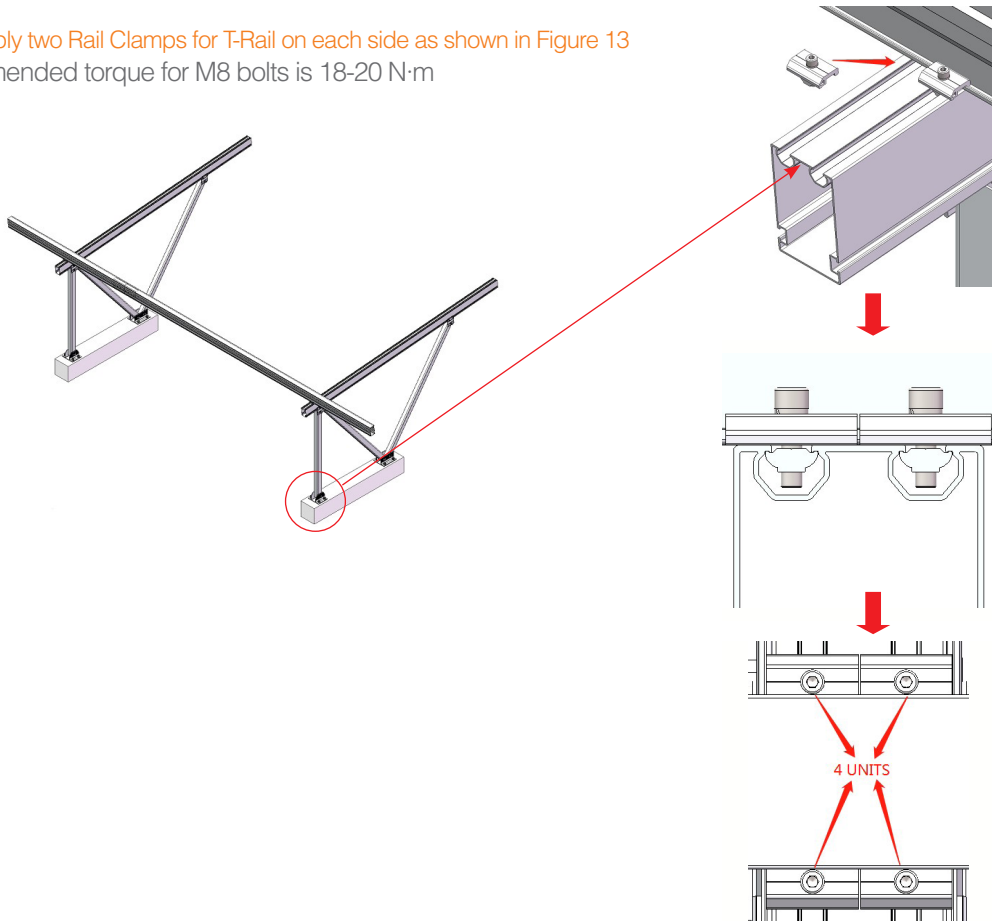


Figure. 13

Installation Instruction

5.2.3

According to engineering drawings, repeat the above operations to install other T-Rails as shown in Figure 14.

Note: Make sure every row of T-Rail is on the same horizontal line and the ends of the T-Rail are aligned.

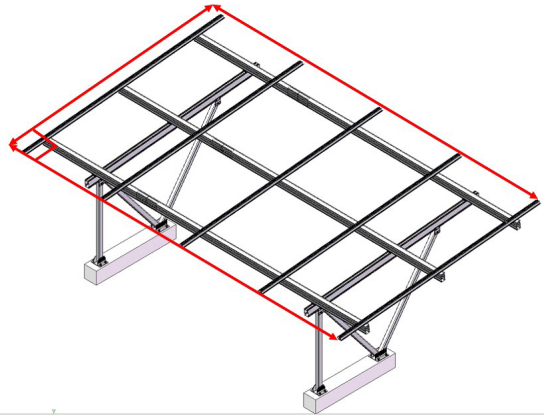


Figure. 14

5.3 Rail 60 Installation

5.3.1

Place one Rail 60 with Water Channel on T-Rail 168 as shown in Figure 15.

Apply Rail Clamp to fix the Rail 60 on T-Rail and fasten it by Allen Key 6mm as shown in Figure 16.

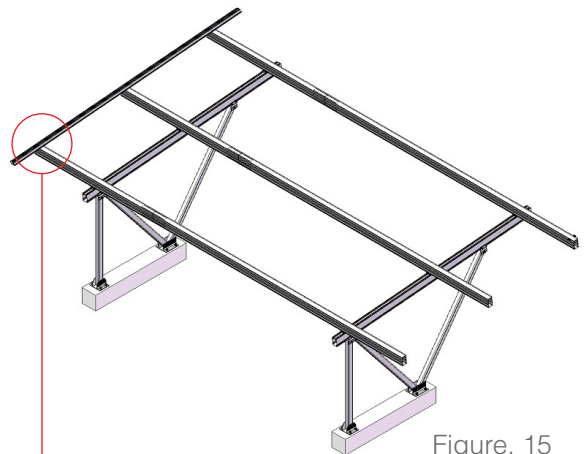


Figure. 15

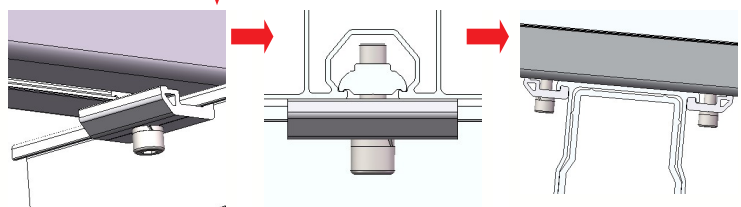


Figure. 16

5.3.2

According to engineering drawings, repeat the above operations to install other Rail 60 with Water Channels as shown in Figure 17.

Note: Make sure every row of the Rail is on the same vertical line and the ends of the Rail are aligned.

Recommended torque for M8 bolts is 18-20N·m

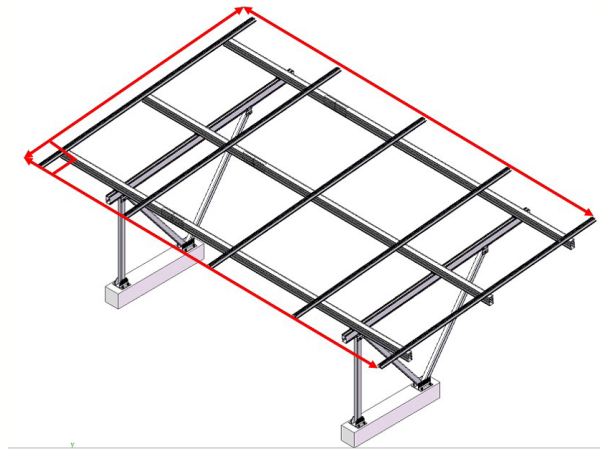


Figure. 17

5.4 PV Module Installation

5.4.1

Click the pre-assembled End Clamp or Inter Clamp II into the grooves of the Rail 60 with Water Channel as shown in Figure 18.

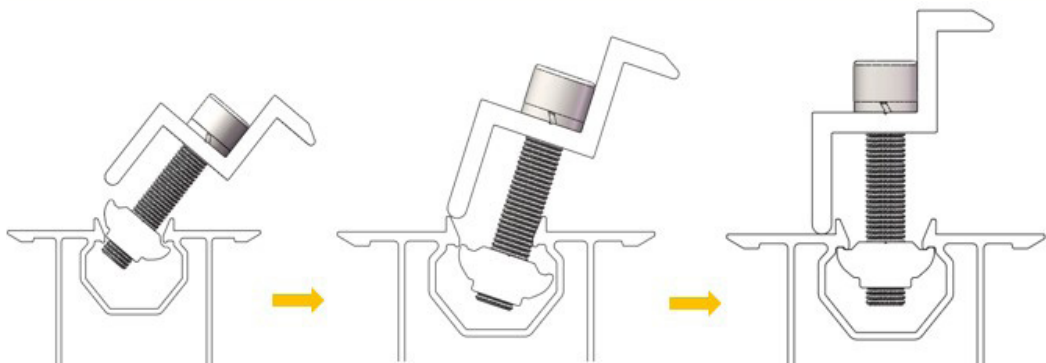


Figure. 18

5.4.2

According to the Figure, place the first row of PV Module on the Rail 60 with Water Channel one by one. The order of the PV Module is from low to high, and from left to right as shown in Figure 19.



Figure. 19

Note: Make sure each row of PV Module maintains the gap of 2mm, it's recommended to make a T-plate with a thickness of 2mm for measurement. The PV Modules are attached closely with the Rails, and the ends of PV Module are aligned. Then fasten Inter Clamps and End Clamps as shown in Figure 20.

Recommended torque for M8 bolts is 18-20N·m

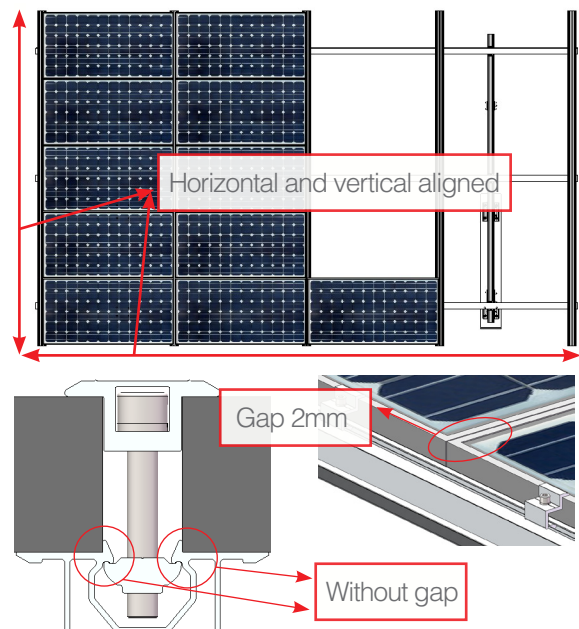


Figure. 20

5.5 Gutter Installation

5.5.1

Slide two sets of Corrugated Clamps into the bottom of the Gutter, and do not fasten the bolts as shown in Figure 21.

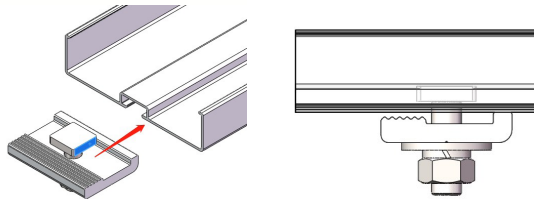


Figure. 21

5.5.2

Put the Rubber Ring into the Gutter and plug the bottom slot. Ensure the Rubber Ring is aligned with the ends of Gutter. Glue evenly the connection as shown in Figure 22.

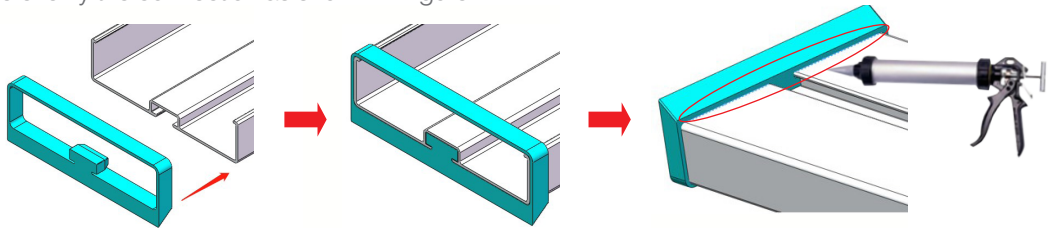


Figure. 22

The effect of installation among Gutter, Corrugated Clamp and Rubber Ring as shown in Figure 23.



Figure. 23

5.5.3

Tilt the Gutter , and place it between the bottom of the PV Module and the Rail 60 with Water Channel as shown in Figure 24 .The order of the Gutter is the same as the PV Module, from low to high, and from left to right.

5.5.4

Straighten the Gutter, make sure the centre of the Gutter is parallel to the frame line of PV Module and downward by about 10mm as shown in Figure 24.

Note: The distance of the two ends of Gutter over the Water Guide Rail60 is equal as shown in Figure 25.

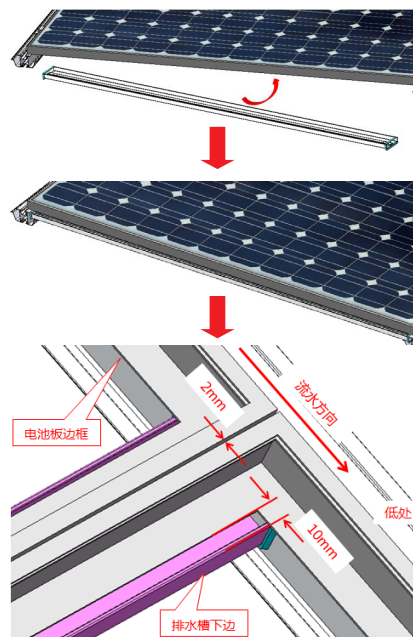


Figure. 24

5.5.5

After the last step, adjust Corrugated Clamp to engage the corrugated surface of Rail 60 with Water Channel and the clamp are Meshed, then lock the Corrugated Clamp as shown in Figure 25.

Recommended torque for M8 bolts is 12-15N·m

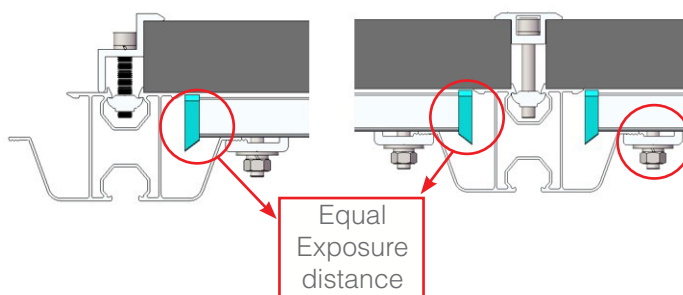


Figure. 25

5.5.6

After placing an array of Gutter as shown in Figure 26, make sure the Gutters in each row are on the same line.

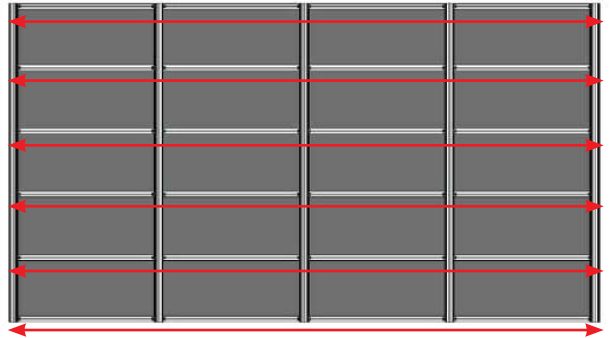


Figure. 26

5.5.7

After the installation is completed, check to ensure all bolts are locked, and the installation is complete as shown in Figure 27.

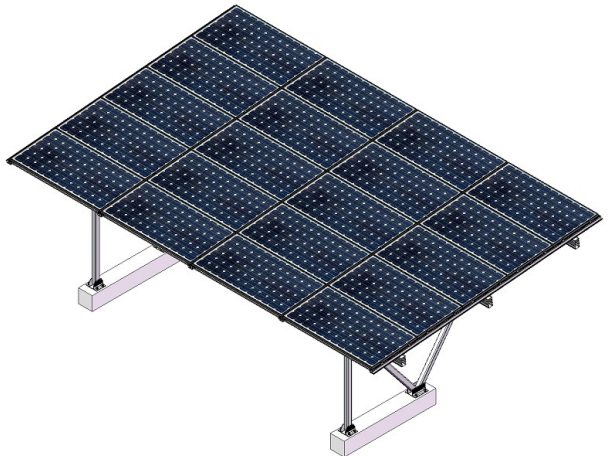
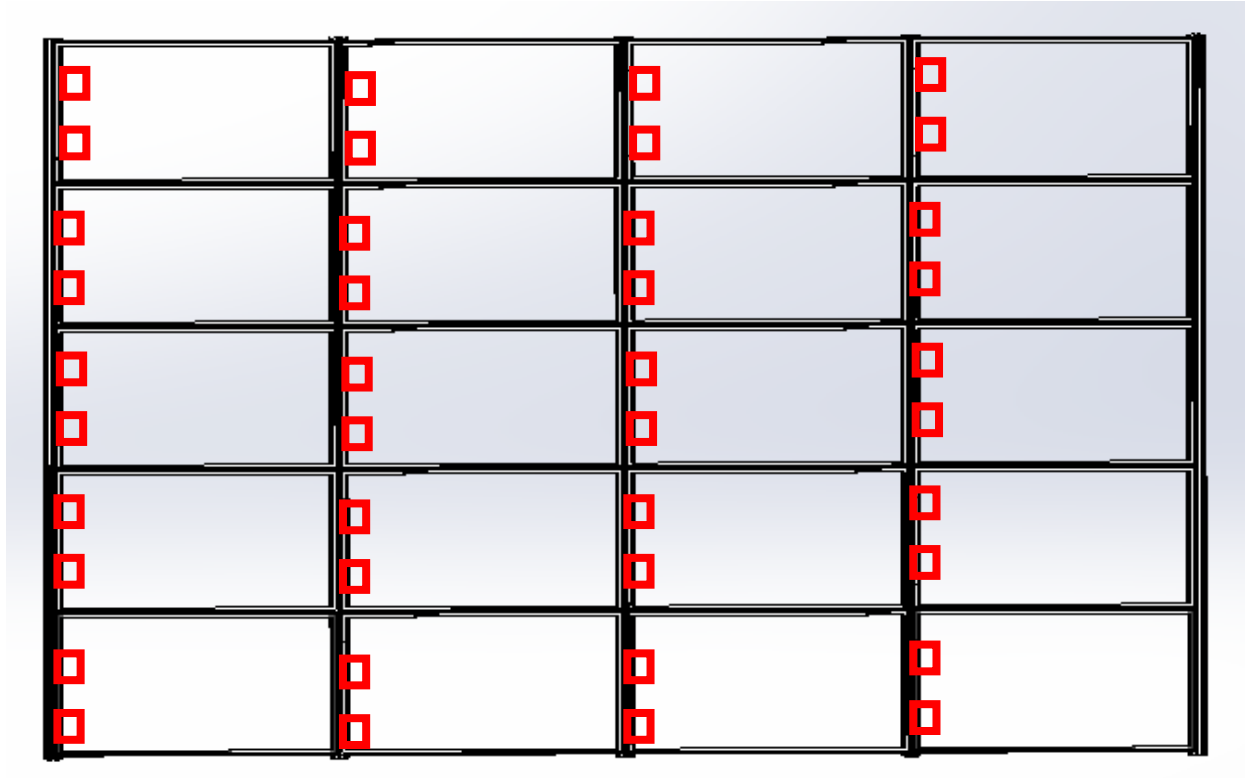


Figure. 27

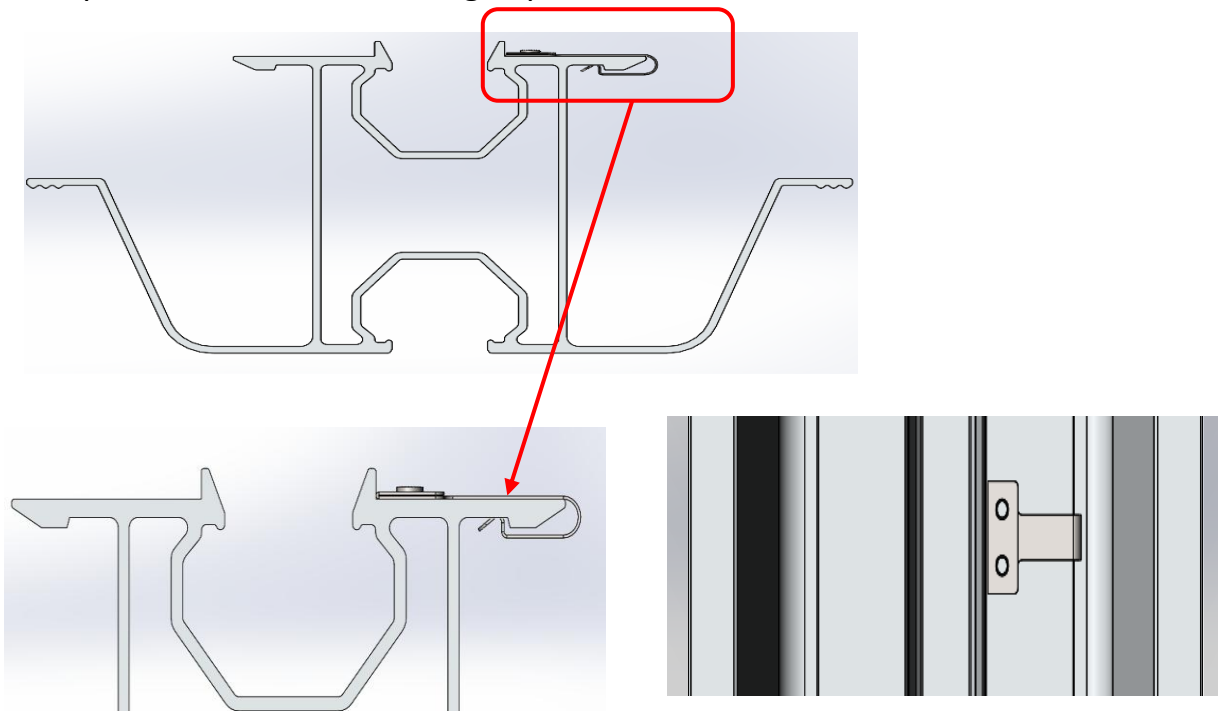
① Grounding Clip(GC-LSR)

A. The red frame is the installation position of the Grounding Clip(GC-LSR)



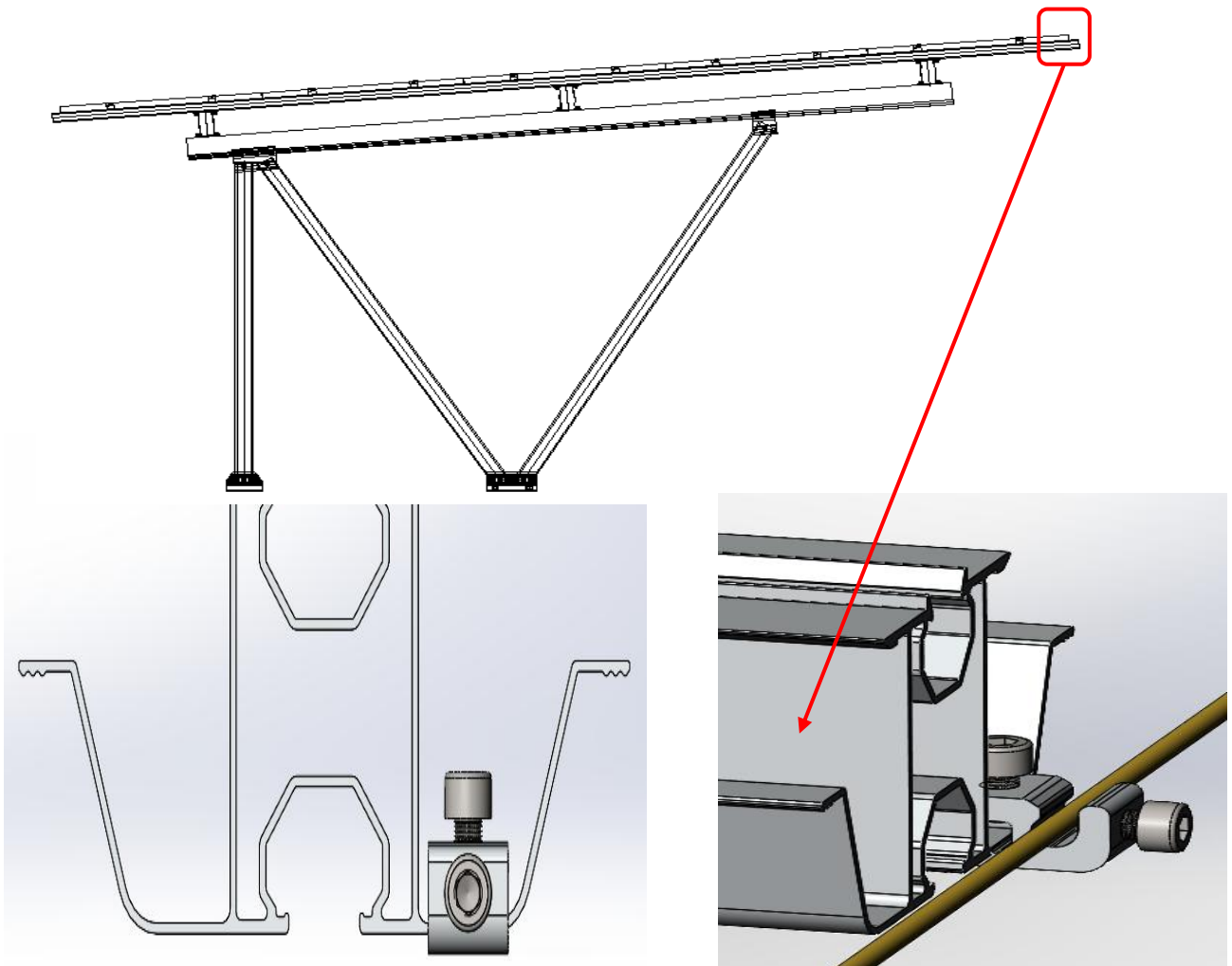
B. The installation location is as shown below:

1 panel matches 2 Grounding Clip

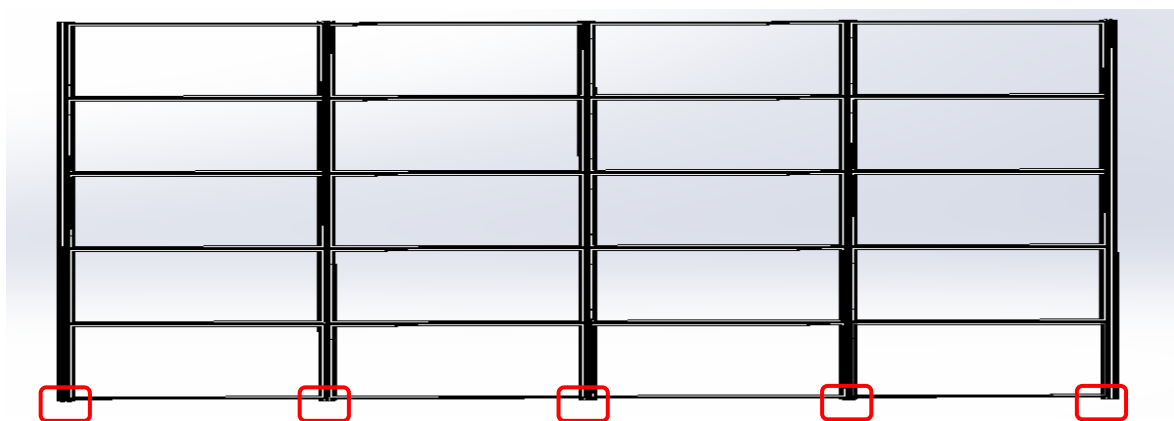


②Grounding Lug(EZ-GL-U)

A. Installed on the high side



B. 1 Rail-60(R-SDII/60/L) matches 1 Grounding Lug





Innovating renewable energy

Clenergy Australia

1/10 Duerdin Street, Clayton VIC 3168 Australia
Tel: +61 3 9239 8088 Fax: +61 3 9239 8024
E-mail: sales@clenergy.com.au
www.clenergy.com.au

Clenergy China

999-1009 Min'an Rd, Huoju Hi-tech Ind. Dev. Zone
Xiang'an District 361101, Xiamen, Fujian, China
Tel: +86 592 311 0088 Fax: +86 592 599 5028
E-mail: sales@clenergy.com.cn
www.clenergy.com.cn

Clenergy EMEA

Esplanade 41, 20354 Hamburg, Germany
Tel: +49 (0) 40 3562 389 00
E-mail: sales.emea@clenergy.com

Clenergy Japan

Nittochi Yamashita Building 5th Floor
23 Yamashita-cho, Yokohama, 231-0023 Japan
Tel: +81 45 228 8226 Fax: +81 45 228 8316
E-mail: sales@clenergy.co.jp
www.clenergy.jp

Clenergy Philippines

145 Yakal St., San Antonio village, Makati City, Philippines
Tel: +63 977 8407240
E-mail: sales_ph@clenergy.com
www.clenergy.ph

Clenergy Thailand

9/2, 5th Floor, Vorasin Building, Soi Yasoob 2, Vipavadee-Rungsit Road, Chomphon Sub-district, Chatuchak District, Bangkok 10900
Tel: +66 (0) 2 277 5201, +66 (0) 6 3228-0200
E-mail: sales_th@clenergy.com, support_th@clenergy.com
www.clenergythailand.com

Clenergy Singapore

24 Raffles Place #28-01 Clifford Centre Singapore 048621
Tel: +65 9743 1425
E-mail: vincent.chan@clenergy.com

Clenergy Malaysia

Tel: +86 18750231005
E-mail: sales_em@clenergy.com

Clenergy Vietnam

Tel: +86 592 3110095
E-mail: sales_vietnam@clenergy.com;
susie.chen@clenergy.com

Clenergy Korea

Tel: +8210-4684-8088
E-mail: sales.kr@clenergy.com

Worldwide Network



Installation Guide_PV-ezRack_ezShade 2.0_V1.1 (November 2020)

[f](#) @ClenergyGlobal @ClenergyClub @ClenergyAUS [Zalo](#) [in](#) [v](#) @Clenergy [ig](#) @ClenergyClub [t](#) @Clenergy_global