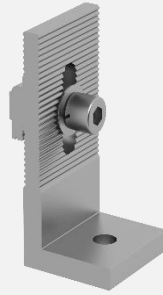


Tin Interface with M8x28 Bolt

- Component -



Tin Interface with M8x28 Bolt
Part No.: I-05-8/28/TH-B

- Technical Specification -

Application	For Klip-lok Interface
Dimensions	L40mm*W38mm*H84mm
Weight	0.116 Kg
Packaging	50 units per pack, 4 packs (200 units) per carton
Material	Main Structure: AL6005-T5 Bolts/washers/nuts: SUS 304
Color	Silver (half anodized, no less than 10µm)
Standard	GB50797 AS NZS1170.2-2011 EN1991 JISC8955 ASCE 7-10

