

# AC/DC GEAR MOTOR

CATALOGUE



# TRANSMISSION

HEAVY DUTY INDUSTRIAL GEAR BOX & GEAR MOTORS



## DESCRIPTION OF MOTOR

5
I
K
40
R
GN
C
T

①	电动机尺寸 Motor Frame Size	0:42mm 2:60mm 3: 70mm 4:80mm 5:90mm 6:104mm
②	类型名称 Motor Type	I:感应电机 Induction Motors R:可逆电动机 Reversible Motors T:转矩电动机 Torque Motors
③	系列名称 Series	K: K系列 K Series
④	输出功率 Output Power(W)	(例, E.g.) 40: 40W
⑤	R标识带调速器电动机; 无: 表示未带 The Suffix "-R" after the output power means speed adjustable motor.	
⑥	转轴形状 Motor Shaft Type	GN: GN型齿轮轴 GN Type Pinion Shaft GU: GU型齿轮轴 GU Type Pinion Shaft A: 圆轴型 Round Shaft A1: 键槽型 Keyway
⑦	电源电压、极数 Power Supply Voltage, Poles	A: 单相Single-Phase 110V 50/60Hz 4p H: 单相Single-Phase 220/230V 60Hz 4p B: 单相Single-Phase 110V 50Hz 2p S: 三相Three-Phase 200/220/230V 50/60Hz 4p C: 单相Single-Phase 220/230V 50Hz 4p S3: 三相Three-Phase 380/400/415V 50/60Hz 4p D: 单相Single-Phase 220V 50Hz 2p T: 三相Three-Phase 200/220/230V 50/60Hz 2p E: 单相Single-Phase 110/120V 60Hz 4p T3: 三相Three-Phase 380/400/415V 50/60Hz 2p
⑧	T: 带端子箱型 Terminal Box type F: 带风扇 W/Fan FF: 带强制风扇 W/Forced Fan M: 无励磁动作型电磁制动电动机 Power Off Activated Type Electromagnetic Brake Motor	

## DESCRIPTION OF GEAR HEAD

5
GN
50
K
RH

①	减速器安装尺寸 Gear head Frame Size	0:42mm 2:60mm 3: 70mm 4:80mm 5:90mm 6:104mm
②	类型 Type of Pinion	GN: GN型齿轮轴 GN Type gear GU: GU型齿轮轴 GU Type gear
③	减速比 Gear Ratio	(例, E.g.)50: 减速比 Gear Ratio of 1:50 10 × 仅限减速器 1 : 10的中间减速比 10 × Denotes The Decimal Gearhead of Ratio 1:10
④	轴承类型 Bearing Type	K: 滚珠轴承 (对GU型方形箱体标注为KB) Bearing(Mark KB for Type GU Square Case) RH: 蜗轮蜗杆空心轴输出 Hollow Worm Shaft RA: 蜗轮蜗杆实心轴输出 Worm Output Shaft RC: 弧锥尺空心轴输出 Spiral Bevel Hollow Shaft RT: 弧锥尺实心轴输出 Spiral Bevel Output Shaft
⑤	输出种类 Type of Output Shaft	

备注: 电机配平行轴减速器时第5项省略, 如配直角减速器时第四项省略

⊛ Note: If the motor assembly with parallel gearbox item No.5 shall be canceled.  
If assembly with right angle gearbox item No.4 shall be canceled.

## GENERAL SPECIFICATIONS OF MOTORS

### ■ 3W~200W型、2极·高速型 6W~150W、2P·High Speed

项目 Item	规格 Specifications
绝缘电阻 Insulation Resistance	于常温·常湿下的电动机额定运行后, 以DC500V电阻表测量线圈-外壳间时, 测量值为100MΩ以上 In the circumstance of normal temperature and humidity, the resistance can be up to 100MΩ, measured DC 500v insulation resistance measurer between the motor wiring and motor shell while the motor is working.
绝缘耐压 Insulation Voltage	于常温·常湿下电动机额定运行后, 在线圈-外壳间施加一分钟50Hz或60Hz、1.5kV (三相400V为2kV) 的电压, 亦无异样 In the circumstance of normal temperature and humidity, there will be no problem supplying the power of 1.5kV(three phase400v: 2kv) at 50/60hz between the metal wiring and motor shell for 1 minute while the motor is working.
温度上升 Temperature Rise	在装上减速机或同等散热板*并于常温·常湿下进行额定运行时, 以电阻法测定其线圈温度上升值为80°C以下 (三相型为70°C以下) The temperature rise of winding are 80°C or less measured by the resistance change method after rated motor operation under normal ambient temperature and humidity, with connecting a gearhead or equivalent heat radiation plate*.
绝缘等级 Insulation Class	UL/CSA规格: A种 (105°C)、EN规格: B种 (130°C) UL/CSA Standards: Class A(105°C) EN Standards: Class B(130°C)
过热保护装置 Overheat Protection	内藏热保护装置 (自动复位型) B种 (开放: 120°C±5°C、75°C±15°C) F种 (开放: 145°C±5°C、100°C±15°C) Thermal protector inside ( automatic return ) Class B ( opening: 120°C±5°C、75°C±15°C ) Class F ( opening: 145°C±5°C、100°C±15°C )
使用环境温度 Ambient Temperature	单相100V、三相200V: -10~+50°C (无结冰) 其他电压: -10~+40°C (无结冰) Single-Phase100VAC、Three-Phase200VAC: -10~+50°C(NonFreezing) Others: -10~+40°C(NonFreezing)
使用环境湿度 Ambient Humidity	85%以下 (无结露) ≤85% (Noncondensing)
保护等级 Protection Class	导线型 Lead wire type:IP20 带端子箱型: Terminal Box Type 单相Single-phase 100V50/60HZ、110/120V60HZ、220/230V50HZ、220/230V60HZ 25W-180W Type: IP54 (不包括圆轴安装面 Excluding the installation surface of the round shaft type ) 三相Three-phase 200/220/230V50/60HZ、380/400/415V50/60HZ 25W-180W Type: IP54 (不包括圆轴安装面 Excluding the installation surface of the round shaft type )

### ■ Heat Radiation Plate ( Material : Aluminum )

电动类型 Motor Type	尺寸Size	厚度Thickness ( mm )
3W Type	80X80	5
6W Type	115X115	
15W Type	125X125	
25W ( 2极·高速4IK40型、4IK60型 ) (2P-High-Speed 4IK40 Type, 4IK60 Type)	135X135	
40W、60W Type	165X165	
60W、90W、120W Type ( 2极·高速5IK150型 ) (2P-High-Speed 5IK150 Type)	200X200	
120W、140W、200W Type	230X230	



# 10W

FLAME SIZE □ 60mm  
AC GEAR MOTOR

## INDUCTION MOTOR SPECIFICATION

型号Model · 类型 Type 导线型 Lead Wire Type		输出功率 Output power W	电压 Voltage V	频率 Frequency Hz	电流 Current A	启动转矩 Starting Torque mN.m	额定转矩 Rated Torque mN.m	额定转速 Rated Speed r/min	电容器容量 Capacitor μF		
齿轮轴型 Pinion Shaft	圆轴型 Round Shaft										
2IK10GN-A	2IK10A-A	10	1ph 100	50	0.240	55	48	1200	3.5		
				60	0.250	50	40	1450			
2IK10GN-E	2IK10A-E	10	1ph 110 1ph 120	60	0.160	40	40	1450	2		
				50	0.130					48	1200
				50	0.140					40	1450
2IK10GN-C	2IK10A-C	10	1ph 220 1ph 230	50	0.130	50	40	1450	0.8		
				60	0.130	55	40	1450			
				60	0.140	55	40	1450			
2IK10GN-H	2IK10A-H	10	1ph 220 1ph 230	50	0.076	85	48	1200	-		
				60	0.065	70	40	1450			

## REVERSIBLE MOTOR SPECIFICATION

型号Model · 类型 Type 导线型 Lead Wire Type		输出功率 Output power W	电压 Voltage V	频率 Frequency Hz	电流 Current A	启动转矩 Starting Torque mN.m	额定转矩 Rated Torque mN.m	额定转速 Rated Speed r/min	电容器容量 Capacitor μF			
齿轮轴型 Pinion Shaft	圆轴型 Round Shaft											
2RK10GN-A(M)	2RK10A-A(M)	10	1ph 100	50	0.265	60	48	1200	4.0			
				60	0.232	55	40	1450				
2RK10GN-E(M)	2RK10A-E(M)	10	1ph110 1ph120	50	0.185	45	40	1450	2.5			
				60	0.200					50	48	1200
				60	0.150					55	48	1200
2RK10GN-C(M)	2RK10A-C(M)	10	1ph220 1ph230	50	0.145	55	48	1200	1.0			
				60	0.150					50	48	1450
				60	0.150					40	60	1450

## SPEED CONTROL MOTOR SPECIFICATION

型号Model · 类型 Type 导线型 Lead Wire Type		最大输出功率 Output power W	电压 Voltage V	频率 Frequency Hz	调速范围 Speed Control Range r/min	容许转矩 Allowance Torque		启动转矩 Starting Torque mN.m	电流 Current A	电容器容量 Capacitor μF
齿轮轴型 Pinion Shaft	圆轴型 Round Shaft					1200r/min mN.m	90r/min mN.m			
2IK10RGN-A	2IK10RA-A	10	1ph 100	50	90~1350	50	30	35	0.240	3.5
						50	29	35	0.250	
2IK10RGN-E	2IK10RA-E	10	1ph 110 1ph 120	60	90~1650	50	29	30	0.160	2.0
									0.180	
									0.130	
2IK10RGN-C	2IK10RA-C	10	1ph 220 1ph 230	50	90~1350	55	29	35	0.110	0.8
									0.140	
									0.120	

## Gear Motor-Torque Table

- 减速器另售,中间减速器另售。

Gearhead and mid-gearbox can be sold separately.

- 减速品型号的□中为减速比的数值。

Enter the gear ratio in the box(□) within the model name.

- 色表示与电动机同一方向运转,其他则为相反方向。

The colored background indicates the same rotating direction of the motor while the rotating direction of others are opposite.

容许力矩单位 Allowance Torque Unit : 上段 Upside ( N.m ) /下段 Belowside ( kgf.cm )

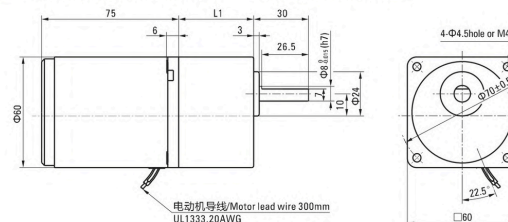
类型 Type 电动机/减速机 Motor/Gearhead	减速比 Gear Ratio	容许力矩																					
		3	3.6	5	6	7.5	9	12.5	15	18	25	30	36	50	60	75	90	100	120	150	180	200	
2IK10GN-A 2IK10GN-E 2IK10GN-C 2IK10GN-H 2IK10GN-S	2GN□K	50Hz	500	417	300	250	200	166	120	100	83	60	50	41	30	25	20	16	15	12.5	10	8.3	7.5
		60Hz	600	500	360	300	240	200	144	120	100	72	60	50	36	30	24	20	18	15	12	10	9
		50Hz	0.12	0.14	0.19	0.23	0.29	0.35	0.49	0.58	0.70	0.88	1.1	1.3	1.6	1.9	2.4	2.9	3	3	3	3	3
		60Hz	1.22	1.43	1.94	2.35	2.96	3.57	5.0	5.92	7.14	8.98	11.2	13.3	16.3	19.4	24.5	29.6	30	30	30	30	30
		1.02	1.22	1.63	1.94	2.45	2.96	4.18	5.0	5.92	7.45	8.98	11.2	13.3	16.3	20.4	24.5	26.5	30	30	30	30	

## 外形图 (单位 mm) Dimensions(Unit mm)

减速器附有安装用螺丝 Mounting screws are included with gearhead.

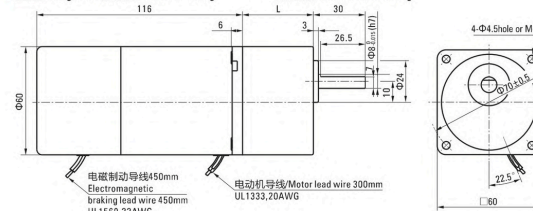
- 导线型 Lead Wiring Type (感应/可逆 Induction/Reversible Motor)

重量 Weight : 电动机 Motor : 0.75kg 减速器 Gearhead : 0.4kg



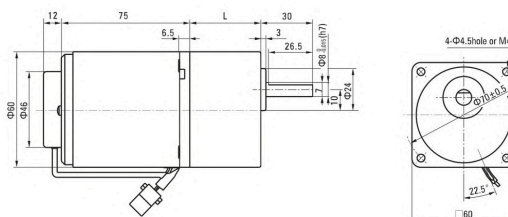
- 导线型 Lead Wiring Type (刹车 Brake Motors)

重量 Weight : 电动机 Motor : 1.1kg 减速器 Gearhead : 0.4kg



- 导线型 Lead Wiring Type (调速 Speed Control Motors)

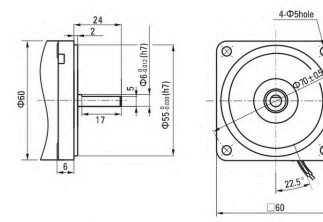
重量 Weight : 电动机 Motor : 1.1kg 减速器 Gearhead : 0.5kg



- 圆轴型的转轴部分 Shaft Section Of Round Shaft Type

除重量及轴部外电动机外形与齿轮轴型相同。

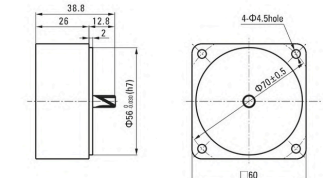
Excluding weight and the shaft section motor shape are the same as those of the pinion shaft type.



- 中间减速器 Decimal Gearhead

可安装在GN齿轮轴型上 Can be connected to GN pinion shaft type  
电动机外形与齿轮轴型相同  
Motor shape is the same as the pinion shaft type

重量 Weight : 0.3kg



减速器型号 Gearhead Model	减速比 Gear Ratio	L1
2GN□K	3~18	32
	25~200	41.5

- 减速器型号的□中为减速比的数值

Enter the gear ratio in the box (□) within the model name





# 25W

FLAME SIZE □80mm  
AC GEAR MOTOR

## INDUCTION MOTOR SPECIFICATION

型号Model · 类型 Type 上段:齿轮轴 Upper:Pinion Shaft 下段()内:圆轴 Below:Round Shaft		输出功率 Output power W	电压 Voltage V	频率 Frequency Hz	电流 Current A	启动转矩 Starting Torque mN.m	额定转矩 Rated Torque mN.m	额定转速 Rated Speed r/min	电容器容量 Capacitor μF
导线型 Lead Wire Type 外形图Dimensions①	带端子箱型 Terminal Box Type 外形图Dimensions②								
4IK25GN-A (4IK25A-A)	4IK25GN-AT (4IK25A-AT)	25	1ph 100	50	0.50	120	200	1250	8.0
				60	0.55		165		
4IK25GN-E (4IK25A-E)	4IK25GN-ET (4IK25A-ET)	25	1ph 110 1ph 120	60	0.45	120	165	1550	7.0
				60	0.50				
4IK25GN-C (4IK25A-C)	4IK25GN-CT (4IK25A-CT)	25	1ph 220 1ph 230	50	0.25	120	200	1250	1.8
				50	0.23				
4IK25GN-H (4IK25A-H)	4IK25GN-HT (4IK25A-HT)	25	1ph 220 1ph 230	60	0.23	120	165	1550	-
				60	0.23				
4IK25GN-S (4IK25A-S)	4IK25GN-ST (4IK25A-ST)	25	3ph 220	50	0.185	250	200	1250	-
				60	0.170		165		

## REVERSIBLE MOTOR SPECIFICATION

型号Model · 类型 Type 上段:齿轮轴 Upper:Pinion Shaft 下段()内:圆轴 Below:Round Shaft		输出功率 Output power W	电压 Voltage V	频率 Frequency Hz	电流 Current A	启动转矩 Starting Torque mN.m	额定转矩 Rated Torque mN.m	额定转速 Rated Speed r/min	电容器容量 Capacitor μF
导线型 Lead Wire Type 外形图Dimensions①	带端子箱型 Terminal Box Type 外形图Dimensions②								
4RK25GN-A (4RK25A-A)	4RK25GN-AT (4RK25A-AT)	25	1ph 100	50	0.59	160	200	1250	10.0
				60	0.69	140	165	1550	
4RK25GN-E (4RK25A-E)	4RK25GN-ET (4RK25A-ET)	25	1ph 110 1ph 120	60	0.45	140	165	1550	8.0
				60	0.50				
4RK25GN-C (4RK25A-C)	4RK25GN-CT (4RK25A-CT)	25	1ph 220 1ph 230	50	0.29	140	200	1250	2.2
				50	0.30				
4RK25GN-H (4RK25A-H)	4RK25GN-HT (4RK25A-HT)	25	1ph 220 1ph 230	60	0.35	140	165	1550	2.2
				60	0.35				

## SPEED CONTROL MOTOR SPECIFICATION

型号Model · 类型 Type 导线型 Lead Wire Type		最大 输出功率 Output power W	电压 Voltage V	频率 Frequency Hz	调速范围 Speed Control Range r/min	容许转矩 Allowance Torque		启动转矩 Starting Torque mN.m	电流 Current A	电容器容量 Capacitor μF
齿轮轴型 Pinion Shaft	圆轴型 Round Shaft					1200r/min mN.m	90r/min mN.m			
4IK25RGN-A	4IK25RA-A	25	1ph 100	50	90-1350	190	47	88	0.50	8.0
									0.55	
4IK25RGN-E	4IK25RA-E	25	1ph 110 1ph 120	60	90-1650	190	50	105	0.45	7.0
									0.50	
4IK25RGN-C	4IK25RA-C	25	1ph 220 1ph 230	50	90-1350	190	47	88	0.25	1.8
									0.23	
4IK25RGN-H	4IK25RA-H	25	1ph 220 1ph 230	60	90-1650	190	45	88	0.23	1.8
									0.23	

## Gear Motor-Torque Table

- 减压器另售·中间减压器另售。

Gearhead and mid-gearbox can be sold separately.

- 减压器型号中的□中为减速比的数值。

Enter the gear ratio in the box(□) within the model name.

- 色表示与电动机同一方向运转，其他则为相反方向。

The colored background indicates the same rotating direction of the motor while the rotating direction of others are opposite.

容许力矩单位 Allowance Torque Unit : 上段 Upside ( N.m ) /下段 Belowside ( kgf.cm )

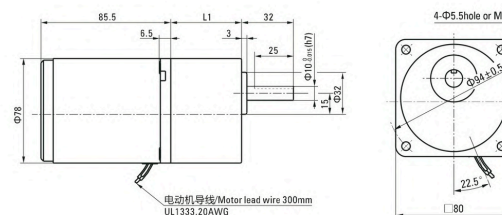
类型 Type 电动机/减速机 Motor/Gearhead	减速比 Gear Ratio	3	3.6	5	6	7.5	9	12.5	15	18	25	30	36	50	60	75	90	100	120	150	180	200		
		转速 Speed r/min	50Hz	500	417	300	250	200	166	120	100	83	60	50	41	30	25	20	16	15	12.5	10	8.3	7.5
4IK25GN-A□ 4IK25GN-E□ 4IK25GN-C□ 4IK25GN-H□ 4IK25GN-S□	4GN□K	50Hz	0.49	0.58	0.81	0.97	1.2	1.5	2.0	2.4	2.9	3.7	4.4	5.3	6.6	7.9	8	8	8	8	8	8	8	
			60Hz	5.00	5.91	8.26	9.89	12.2	15.3	20.4	24.4	29.6	37.7	44.9	54.1	67.3	80	80	80	80	80	80	80	80
		60Hz	0.40	0.48	0.67	0.80	1.0	1.2	1.7	2.0	2.4	3.0	3.6	4.3	5.4	6.5	8	8	8	8	8	8	8	8
			4.08	4.89	6.83	8.16	10.2	12.2	17.3	20.4	24.4	30.6	36.7	43.8	55.1	66.3	80	80	80	80	80	80	80	80

## 外形图 (单位 mm) Dimensions(Unit mm)

减压器附有安装用螺丝 Mounting screws are included with gearhead.

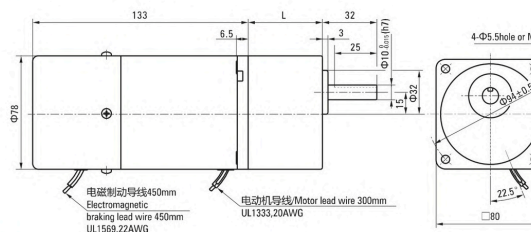
- 导线型 Lead Wiring Type (感应/可逆 Induction/Reversible Motor)

重量 Weight : 电动机 Motor : 1.6kg 减压器 Gearhead : 0.80kg



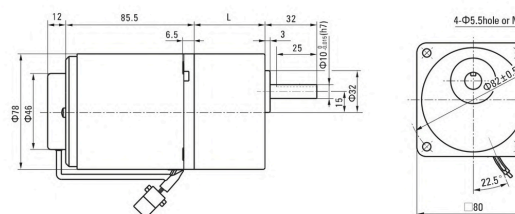
- 导线型 Lead Wiring Type (刹车 Brake Motors)

重量 Weight : 电动机 Motor : 2.15kg 减压器 Gearhead : 0.8kg



- 导线型 Lead Wiring Type (调速 Speed Control Motors)

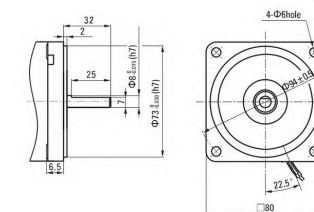
重量 Weight : 电动机 Motor : 1.7kg 减压器 Gearhead : 0.8kg



- 圆轴型的转轴部分 Shaft Section Of Round Shaft Type

除重量及轴部外电动机外形与齿轮轴型相同。

Excluding weight and the shaft section motor shape are the same as those of the pinion shaft type.

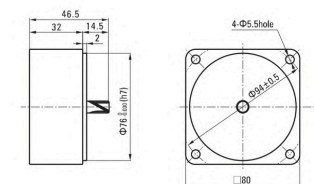


- 中间减压器 Decimal Gearhead

可安装在GN齿轮轴型上 Can be connected to GN pinion shaft type

电动机外形与齿轮轴型相同

重量 Weight : 0.41kg



减压器型号 Gearhead Model	减速比 Gear Ratio	L1
4GN□K	3-18	32
	25-200	43.5

- 减压器型号中的□中为减速比的数值

Enter the gear ratio in the box (□) within the model name



## Gear Motor-Torque Table

- 减速器另售·中间减速器另售。

Gearhead and mid-gearbox can be sold separately.

- 减速品型号的□中为减速比的数值。

Enter the gear ratio in the box (□) within the model name.

- 色表示与电动机同一方向运转，其他则为相反方向。

The colored background □ indicates the same rotating direction of the motor while the rotating direction of others are opposite.

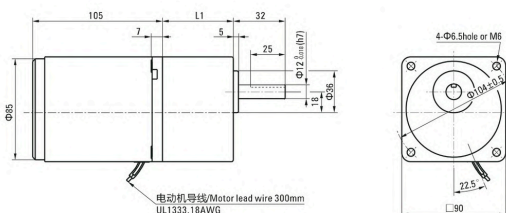
容许力矩单位 Allowance Torque Unit : 上段 Upside ( N.m ) / 下段 Belowside ( kgf.cm )

类型 Type 电动机/减速器 Motor/Gearhead	减速比 Gear Ratio																								
	转速 Speed r/min	50Hz	60Hz	3	3.6	5	6	7.5	9	12.5	15	18	25	30	36	50	60	75	90	100	120	150	180	200	
5IK40GN-A□ 5IK40GN-E□ 5IK40GN-C□ 5IK40GN-H□ 5IK40GN-S□	5GN□K	50Hz	0.77	0.92	1.3	1.5	1.9	2.3	3.2	3.8	4.6	5.7	6.9	8.3	10	10	10	10	10	10	10	10	10	10	10
		60Hz	7.85	9.38	13.2	15.3	19.4	23.4	32.6	38.7	46.9	58.1	70.4	84.7	100	100	100	100	100	100	100	100	100	100	100
	5GN□K	50Hz	0.63	0.76	1.1	1.3	1.6	1.9	2.6	3.2	3.8	4.7	5.7	6.8	8.6	10	10	10	10	10	10	10	10	10	10
		60Hz	6.42	7.75	11.2	13.2	16.3	19.3	26.5	32.6	38.7	47.9	58.1	69.3	87.7	100	100	100	100	100	100	100	100	100	100

## 外形图 (单位 mm) Dimensions (Unit mm)

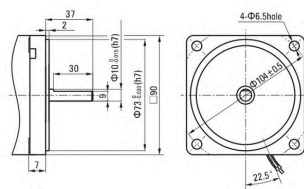
减速器附有安装用螺丝 Mounting screws are included with gearhead.

- 导线型 Lead Wiring Type (感应/可逆 Induction/Reversible Motor)  
重量 Weight : 电动机 Motor : 2.4kg 减速器 Gearhead : 1.35kg



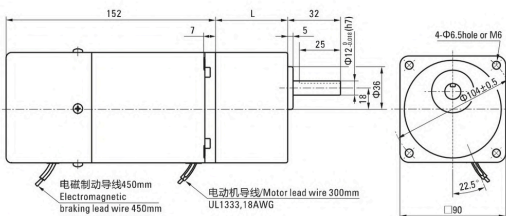
## 圆轴型的转轴部分 Shaft Section Of Round Shaft Type

除重量及轴部外电动机外形与齿轮轴型相同。  
Excluding weight and the shaft section motor shape are the same as those of the pinion shaft type.



- 导线型 Lead Wiring Type (刹车 Brake Motors)

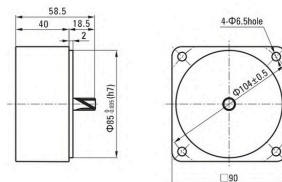
重量 Weight : 电动机 Motor : 3.1kg 减速器 Gearhead : 1.35kg



## 中间减速器 Decimal Gearhead

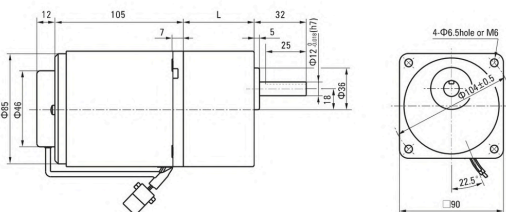
可安装在GN齿轮轴型上 Can be connected to GN pinion shaft type  
电动机外形与齿轮轴型相同  
5GN10XX

重量 Weight : 0.6kg



- 导线型 Lead Wiring Type (调速 Speed Control Motors)

重量 Weight : 电动机 Motor : 2.5kg 减速器 Gearhead : 1.35kg

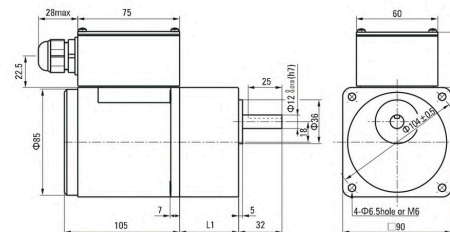


减速器型号 Gearhead Model	减速比 Gear Ratio	L1
5GN□K	3~18	42
	25~200	60

- 减速器型号的□中为减速比的数值  
Enter the gear ratio in the box (□) within the model name

- 带端子箱型 Terminal Box Type (感应/可逆 Induction/Reversible Motor)

重量 Weight : 电动机 Motor : 2.55kg 减速器 Gearhead : 1.35kg



减速器型号 Gearhead Model	减速比 Gear Ratio	L1
5GN□K	3~18	42
	25~200	60

- 减速器型号的□中为减速比的数值  
Enter the gear ratio in the box (□) within the model name

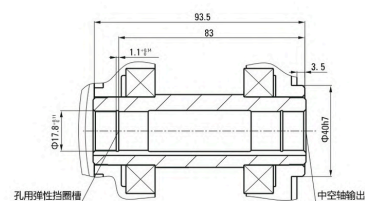
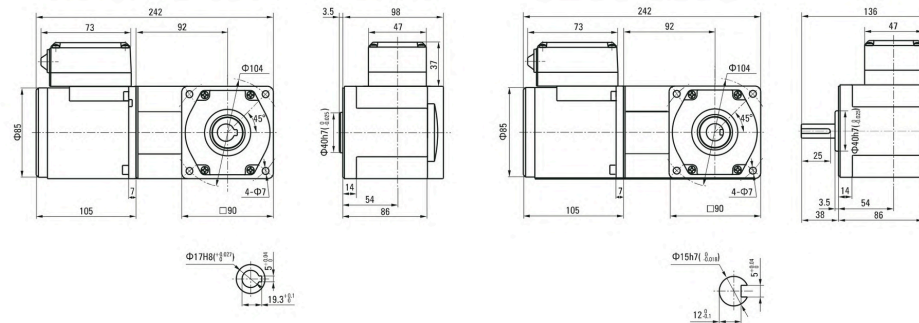
## SPIRAL BEVEL RIGHT ANGLE

容许力矩单位 Allowance Torque Unit: 上段 Upside (N.m) / 下段 Belowside (kgf.cm)

机型 Type 电动机/减速器 Motor/Gearhead	减速比 Gear Ratio																							
		转速 Speed r/min	50Hz	60Hz	3	3.6	5	6	7.5	9	12.5	15	18	25	30	36	50	60	75	90	100	120	150	180
5IK40GU-A□ 5IK40GU-E□ 5IK40GU-C□ 5IK40GU-H□ 5IK40GU-S□	5GU□RC 5GU□RT	50Hz	0.57	0.68	0.59	1.14	1.58	1.89	2.63	3.16	3.79	5.26	6.31	6.8	9.5	11.4	14.2	17.0	18.9	20.0	20.0	20.0	20.0	20.0
		60Hz	5.80	6.96	9.66	11.6	16.1	19.3	26.8	32.2	38.6	53.7	64.4	70	97	116	145	174	193	200	200	200	200	200
	5GU□RC 5GU□RT	50Hz	0.46	0.55	0.76	0.92	1.27	1.53	2.12	2.55	3.05	4.24	5.09	5.50	7.64	9.16	11.5	13.7	15.3	18.3	20.0	20.0	20.0	20.0
		60Hz	4.67	5.61	7.79	9.35	13.0	15.6	21.6	26.0	31.2	43.3	51.9	56.1	77.9	93.5	117	140	156	187	200	200	200	200

## 感应尺寸图 Induction Type Drawing

5IK40GU-A□/5GU□RC 5IK40GU-E□/5GU□RC	5IK40GU-C□/5GU□RC 5IK40GU-H□/5GU□RC	5IK40GU-S□/5GU□RC	5IK40GU-A□/5GU□RT 5IK40GU-E□/5GU□RT	5IK40GU-C□/5GU□RT 5IK40GU-H□/5GU□RT	5IK40GU-S□/5GU□RT
--	--	-------------------	--	--	-------------------





# 60W

FLAME SIZE □90mm  
AC GEAR MOTOR

## INDUCTION MOTOR SPECIFICATION

型号Model · 类型 Type 上段:齿轮轴 Upper:Pinion Shaft 下段()内:圆轴 Below:Round Shaft		输出功率 Output power W	电压 Voltage V	频率 Frequency Hz	电流 Current A	启动转矩 Starting Torque mN.m	额定转矩 Rated Torque mN.m	额定转速 Rated Speed r/min	电容器容量 Capacitor μF
导线型 Lead Wire Type 外形图Dimensions①	端子箱型 Terminal Box Type 外形图Dimensions②								
5IK60GN-AF (5IK60A-AF)	5IK60GN-AFT (5IK60A-AFT)	60	1ph 100	50	1.00	320	470	1250	20.0
				60	1.10				
5IK60GN-EF (5IK60A-EF)	5IK60GN-EFT (5IK60A-EFT)	60	1ph 110	60	0.80	300	380	1550	12.0
				60	0.85				
5IK60GN-CF (5IK60A-CF)	5IK60GN-CFT (5IK60A-CFT)	60	1ph 220	50	0.50	340	470	1250	4.0
				50	0.55				
5IK60GN-HF (5IK60A-HF)	5IK60GN-HFT (5IK60A-HFT)	60	1ph 220	60	0.50	340	380	1550	4.0
				60	0.55				
5IK60GN-SF (5IK60A-SF)	5IK60GN-SFT (5IK60A-SFT)	60	3ph 220	50	0.45	1000	470	1250	-
				60	0.40	800	380	1550	

## REVERSIBLE MOTOR SPECIFICATION

型号Model · 类型 Type 上段:齿轮轴 Upper:Pinion Shaft 下段()内:圆轴 Below:Round Shaft		输出功率 Output power W	电压 Voltage V	频率 Frequency Hz	电流 Current A	启动转矩 Starting Torque mN.m	额定转矩 Rated Torque mN.m	额定转速 Rated Speed r/min	电容器容量 Capacitor μF
导线型 Lead Wire Type 外形图Dimensions①	端子箱型 Terminal Box Type 外形图Dimensions②								
5RK60GN-AF (5RK60A-AF)	5RK60GN-AFT (5RK60A-AFT)	60	1ph 100	50	1.26	470	470	1250	25.0
				60	1.70				
5RK60GN-EF (5RK60A-EF)	5RK60GN-EFT (5RK60A-EFT)	60	1ph 110	60	1.05	330	380	1550	15.0
				60	1.05	380			
5RK60GN-CF (5RK60A-CF)	5RK60GN-CFT (5RK60A-CFT)	60	1ph 220	50	0.55	420	470	1250	4.5
				50	0.60	460			
5RK60GN-HF (5RK60A-HF)	5RK60GN-HFT (5RK60A-HFT)	60	1ph 220	60	0.55	420	380	1550	4.5
				60	0.60	460			

## SPEED CONTROL MOTOR SPECIFICATION

型号Model · 类型 Type 导线型 Lead Wire Type		最大 输出功率 Output power W	电压 Voltage V	频率 Frequency Hz	调速范围 Speed Control Range r/min	容许转矩 Allowance Torque		启动转矩 Starting Torque mN.m	电流 Current A	电容器容量 Capacitor μF
齿轮轴型 Pinion Shaft	圆轴型 Round Shaft					1200r/min mN.m	90r/min mN.m			
5IK60RGN-AF	5IK60RA-AF	60	1ph 100	50	90~1350	460	140	265	1.00	20.0
						490	160		1.10	
5IK60RGN-EF	5IK60RA-EF	60	1ph 110	60	90~1650	490	160	265	0.80	12.0
									0.85	
5IK60RGN-CF	5IK60RA-CF	60	1ph 220	50	90~1350	490	140	265	0.50	4.0
									0.55	
5IK60RGN-HF	5IK60RA-HF	60	1ph 220	60	90~1650	490	160	265	0.50	4.0
									0.55	

## Gear Motor-Torque Table

- 减速度器另售 中间减速度器另售。

Gearhead and mid-gearbox can be sold separately.

- 减速度品型号的□中为减速度比的数值。

Enter the gear ratio in the box(□) within the model name.

- 色表示与电动机同一方向运转,其他则为相反方向。

The colored background indicates the same rotating direction of the motor while the rotating direction of others are opposite.

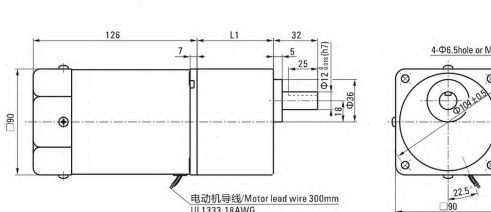
容许力矩单位 Allowance Torque Unit : 上段 Upside ( N.m ) / 下段 Belowside ( kgf.cm )

类型 Type 电动机/减速机 Motor/Gearhead	减速度 Gear Ratio	容许力矩																					
		3	3.6	5	6	7.5	9	12.5	15	18	25	30	36	50	60	75	90	100	120	150	180	200	
5IK60GN-AF□ 5IK60GN-EF□ 5IK60GN-CF□ 5IK60GN-HF□ 5IK60GN-SF□	5GN□K	50Hz	500	417	300	250	200	166	120	100	83	60	50	41	30	25	20	16	15	12.5	10	8.3	7.5
		60Hz	600	500	360	300	240	200	144	120	100	72	60	50	36	30	24	20	18	15	12	10	10
		50Hz	1.1	1.4	1.9	2.3	2.9	3.4	4.8	5.7	6.8	8.6	10	10	10	10	10	10	10	10	10	10	10
		60Hz	0.92	1.1	1.5	1.8	2.3	2.8	3.8	4.6	5.5	6.9	8.3	10	10	10	10	10	10	10	10	10	10
		9.38	11.2	15.3	18.3	23.4	28.5	38.7	46.9	56.1	70.1	84.7	100	100	100	100	100	100	100	100	100	100	

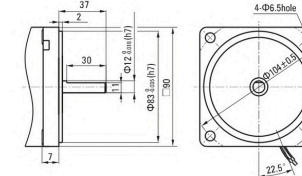
## 外形图 (单位 mm) Dimensions(Unit mm)

减速度器附有安装用螺丝 Mounting screws are included with gearhead.

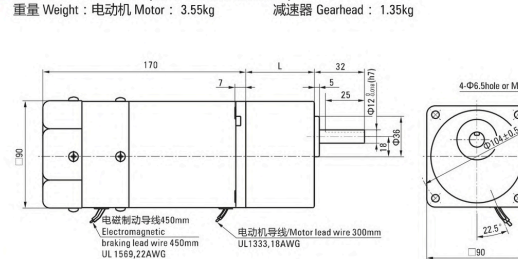
- 导线型 Lead Wiring Type (感应/可逆 Induction/Reversible Motor)  
重量 Weight : 电动机 Motor : 2.7kg 减速度器 Gearhead : 1.35kg



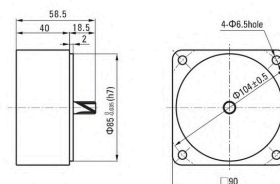
- 圆轴型的转轴部分 Shaft Section Of Round Shaft Type  
除重量及轴部外电动机外形与齿轮轴型相同。  
Excluding weight and the shaft section motor shape are the same as those of the pinion shaft type.



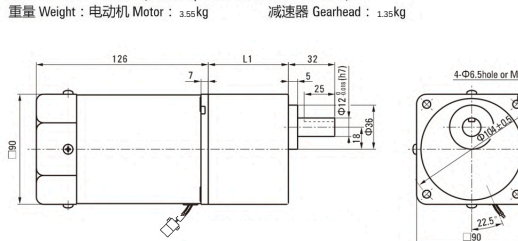
- 导线型 Lead Wiring Type (刹车 Brake Motors)  
重量 Weight : 电动机 Motor : 3.55kg 减速度器 Gearhead : 1.35kg



- 中间减速度器 Decimal Gearhead  
可安装在GN齿轮轴型上 Can be connected to GN pinion shaft type  
电动机外形与齿轮轴型相同  
5GN10XK  
重量 Weight : 0.6kg



- 导线型 Lead Wiring Type (调速 Speed Control Motors)  
重量 Weight : 电动机 Motor : 3.55kg 减速度器 Gearhead : 1.35kg



减速度器型号 Gearhead Model	减速度比 Gear Ratio	L1
5GN□K	3~18	42
	25~200	60

- 减速度器型号的□中为减速度比的数值  
Enter the gear ratio in the box (□) within the model name





# 60W

FLAME SIZE □90mm  
AC GEAR MOTOR

## INDUCTION MOTOR SPECSIFICATION

型号Model · 类型 Type 上段:齿轴轴 Upper:Pinion Shaft 下段()内:圆轴 Below:Round Shaft		输出功率 Output power W	电压 Voltage V	频率 Frequency Hz	电流 Current A	启动转矩 Starting Torque mN.m	额定转矩 Rated Torque mN.m	额定转速 Rated Speed r/min	电容器容量 Capacitor μF
导线型 Lead Wire Type 外形图Dimensions①	带端子箱型 Terminal Box Type 外形图Dimensions②								
5IK60GU-AF	5IK60GU-AFT	60	1ph 100	50	1.00	320	470	1250	20.0
				60	1.10				
5IK60GU-EF	5IK60GU-EFT	60	1ph 110	60	0.80	300	380	1550	12.0
				60	0.85				
5IK60GU-CF	5IK60GU-CFT	60	1ph 220	50	0.50	340	470	1250	4.0
				50	0.55				
5IK60GU-HF	5IK60GU-HFT	60	1ph 220	60	0.50	340	380	1550	-
				60	0.55				
5IK60GU-SF	5IK60GU-SFT	60	3ph 220	50	0.45	1000	470	1250	-
				60	0.40				

## REVERSIBLE MOTOR SPECSIFICATION

型号Model · 类型 Type 上段:齿轴轴 Upper:Pinion Shaft 下段()内:圆轴 Below:Round Shaft		输出功率 Output power W	电压 Voltage V	频率 Frequency Hz	电流 Current A	启动转矩 Starting Torque mN.m	额定转矩 Rated Torque mN.m	额定转速 Rated Speed r/min	电容器容量 Capacitor μF
导线型 Lead Wire Type 外形图Dimensions①	带端子箱型 Terminal Box Type 外形图Dimensions②								
5RK60GU-AF	5RK60GU-AFT	60	1ph 100	50	1.26	470	470	1250	25.0
				60	1.70				
5RK60GU-EF	5RK60GU-EFT	60	1ph 110	60	1.05	330	380	1550	15.0
				60	0.85				
5RK60GU-CF	5RK60GU-CFT	60	1ph 220	50	0.55	420	470	1250	4.5
				50	0.60				
5RK60GU-HF	5RK60GU-HFT	60	1ph 220	60	0.55	420	380	1550	4.5
				60	0.60				

## SPEED CONTROL MOTOR SPECSIFICATION

型号Model · 类型 Type 导线型 Lead Wire Type		最大 输出功率 Output power W	电压 Voltage V	频率 Frequency Hz	调速范围 Speed Control Range r/min	容许转矩 Allowance Torque		启动转矩 Starting Torque mN.m	电流 Current A	电容器容量 Capacitor μF
齿轴轴型 Pinion Shaft						1200r/min mN.m	90r/min mN.m			
5IK60RGU-AF		60	1ph 100	50	90~1350	460	140	265	1.00	20.0
5IK60RGU-EF		60	1ph 110	60	90~1650	490	160	265	0.80	12.0
5IK60RGU-CF		60	1ph 220	50	90~1350	490	140	265	0.50	4.0
5IK60RGU-HF		60	1ph 220	60	90~1650	490	160	265	0.50	4.0

## Gear Motor-Torque Table

- 减速度器另售-中间减速度器另售。  
Gearhead and mid-gearbox can be sold separately.
- 减速度品型号的□中为减速比的数值。  
Enter the gear ratio in the box (□) within the model name.
- 色表示与电动机同一方向运转，其他则为相反方向。  
The colored background indicates the same rotating direction of the motor while the rotating direction of others are opposite.

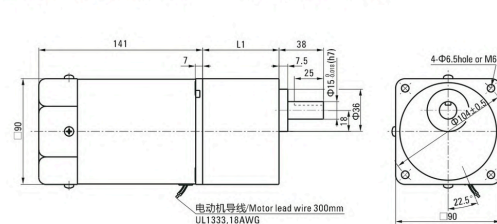
容许力矩单位 Allowance Torque Unit : 上段 Upside ( N.m ) /下段 Belowside ( kgf.cm )

类型 Type 电动机/减速度机 Motor/Gearhead	减速度比 Gear Ratio																							
	转速 Speed r/min	50Hz 60Hz	3	3.6	5	6	7.5	9	12.5	15	18	25	30	36	50	60	75	90	100	120	150	180	200	
5IK90GU-AF□ 5IK90GU-EF□ 5IK90GU-CF□ 5IK90GU-HF□ 5IK90GU-SF□	5GU□KB 5GU□K	50Hz	1.1	2.0	2.8	3.4	4.3	5.1	6.4	7.7	9.2	11.6	13.6	16.6	20	20	20	20	20	20	20	20	20	20
		60Hz	17.3	20.4	28.6	34.7	43.9	52.0	65.3	78.6	93.3	118	142	169	200	200	200	200	200	200	200	200	200	200
		60Hz	14.3	17.3	23.5	28.6	35.7	42.9	53.1	63.3	76.5	95.9	115	138	19.2	200	200	192	200	200	200	200	200	200

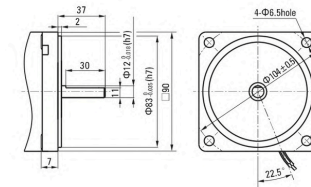
## 外形图 (单位 mm) Dimensions(Unit mm)

减速度器附有安装用螺丝Mounting screws are included with gearhead.

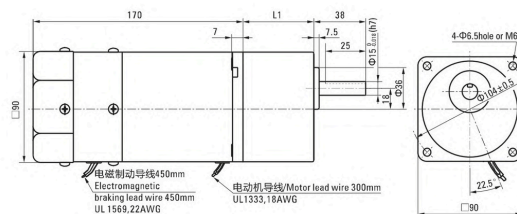
- 导线型 Lead Wiring Type (感应可逆Induction/Reversible Motor)  
重量 Weight : 电动机 Motor : 3.2kg 减速度器 Gearhead : 1.5kg



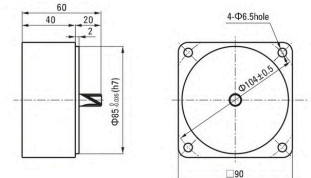
- 圆轴型的轴部分 Shaft Section Of Round Shaft Type  
除重量及轴部外电动机外形与齿轮轴型相同。  
Excluding weight and the shaft section motor shape are the same as those of the pinion shaft type.



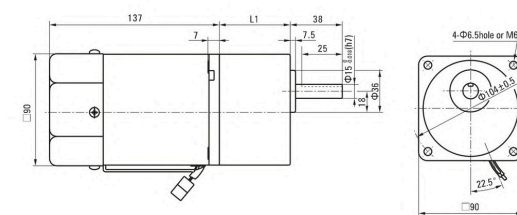
- 导线型 Lead Wiring Type (刹车 Brake Motors)  
重量 Weight : 电动机 Motor : 3.55kg 减速度器 Gearhead : 1.5kg



- 中间减速度器 Decimal Gearhead  
可安装在GU齿轴轴型上Can be connected to GU pinion shaft type  
电动机外形与齿轮轴型相同  
5GU10XK  
重量 Weight : 0.65kg



- 导线型 Lead Wiring Type (调速 Speed Control Motors)  
重量 Weight : 电动机 Motor : 2.8kg 减速度器 Gearhead : 1.5kg



- 减速度器型号的□中为减速比的数值  
Enter the gear ratio in the box (□) within the model name

减速度器型号 Gearhead Model	减速度比 Gear Ratio	L1
5GU□KB	3~200	65.5



## Gear Motor-Torque Table

- 减压器另售·中间减压器另售。

Gearhead and mid-gearbox can be sold separately.

- 减速品型号的□中为减速比的数值。

Enter the gear ratio in the box (□) within the model name.

- 色表示与电动机同一方向运转，其他则为相反方向。

The colored background indicates the same rotating direction of the motor while the rotating direction of others are opposite.

容许力矩单位 Allowance Torque Unit : 上段 Upside ( N.m ) / 下段 Belowside ( kgf.cm )

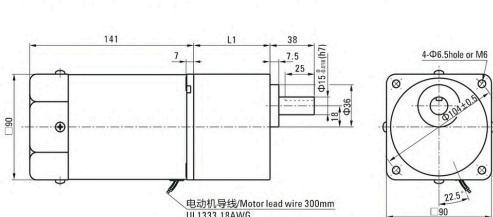
类型 Type 电动机/减压机 Motor/Gearhead	减速比 Gear Ratio																							
	转速 Speed r/min	50Hz	3	3.6	5	6	7.5	9	12.5	15	18	25	30	36	50	60	75	90	100	120	150	180	200	
5IK90GU-AF□ 5IK90GU-EF□ 5IK90GU-CF□ 5IK90GU-HF□ 5IK90GU-SF□	5GU□KB 5GU□K	50Hz	1.1	2.0	2.8	3.4	4.3	5.1	6.4	7.7	9.2	11.6	13.6	16.6	20	20	20	20	20	20	20	20	20	20
		60Hz	17.3	20.4	28.6	34.7	43.9	52.0	65.3	78.6	93.3	118	142	169	200	200	200	200	200	200	200	200	200	200
		60Hz	1.4	1.7	2.3	2.8	3.5	4.2	5.2	6.2	7.5	9.4	11.3	13.5	18.8	20	20	18.8	20	20	20	20	20	20
			14.3	17.3	23.5	28.6	35.7	42.9	53.1	63.3	76.5	95.9	115	138	19.2	200	200	192	200	200	200	200	200	200

## 外形图 (单位 mm) Dimensions (Unit mm)

减压机附有安装用螺丝 Mounting screws are included with gearhead.

- 导线型 Lead Wiring Type (感应/可逆 Induction/Reversible Motor)

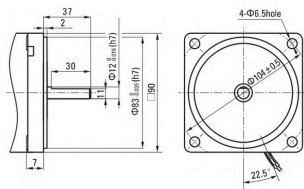
重量 Weight : 电动机 Motor : 3.2kg 减压机 Gearhead : 1.5kg



- 圆轴型的转轴部分 Shaft Section Of Round Shaft Type

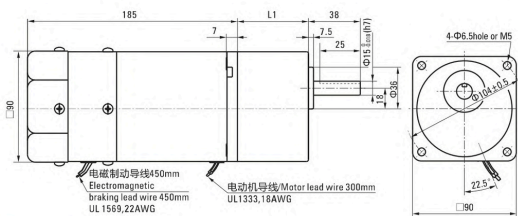
除重量及轴部外电动机外形与齿轮轴型相同。

Excluding weight and the shaft section motor shape are the same as those of the pinion shaft type.



- 导线型 Lead Wiring Type (刹车 Brake Motors)

重量 Weight : 电动机 Motor : 4.3kg 减压机 Gearhead : 1.5kg

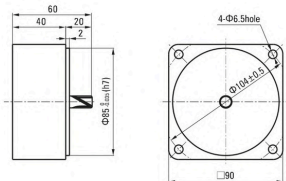


- 中间减压机 Decimal Gearhead

可安装在GU齿轮轴型上 Can be connected to GU pinion shaft type

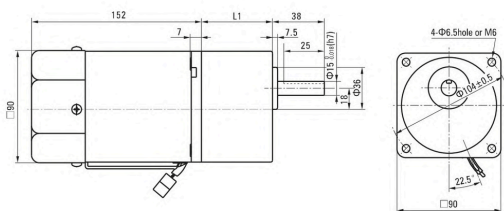
电动机外形与齿轮轴型相同

重量 Weight : 0.65kg



- 导线型 Lead Wiring Type (调速 Speed Control Motors)

重量 Weight : 电动机 Motor : 3.3kg 减压机 Gearhead : 1.5kg



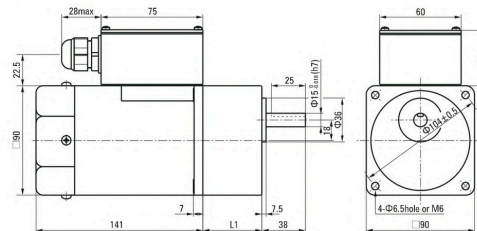
减压机型号 Gearhead Model	减速比 Gear Ratio	L1
5GU□KB	3~200	65.5

- 减压机型号的□中为减速比的数值

Enter the gear ratio in the box (□) within the model name

- 带端子箱型 Terminal Box Type (感应/可逆 Induction/Reversible Motor)

重量 Weight : 电动机 Motor : 3.35kg 减压机 Gearhead : 1.5kg



减压机型号 Gearhead Model	减速比 Gear Ratio	L1
5GU□KB	3~200	65.5

- 减压机型号的□中为减速比的数值

Enter the gear ratio in the box (□) within the model name

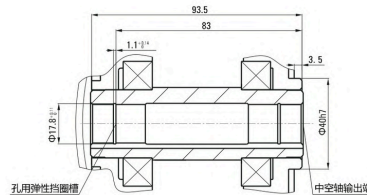
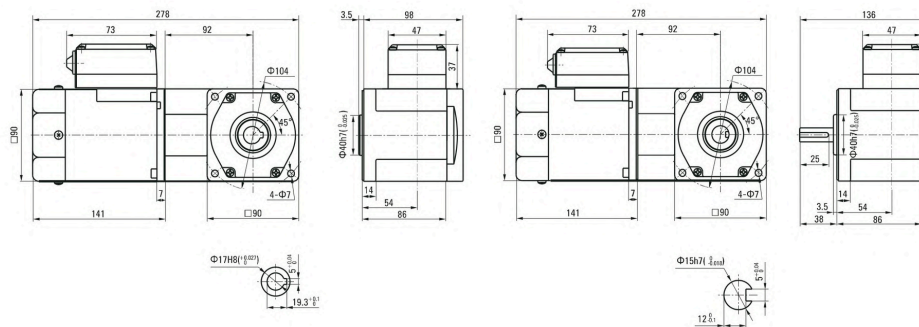
## SPIRAL BEVEL RIGHT ANGLE

容许力矩单位 Allowance Torque Unit: 上段 Upside (N.m) / 下段 Belowside (kgf.cm)

机型 Type 电动机/减压机 Motor/Gearhead	减速比 Gear Ratio	3	3.6	5	6	7.5	9	12.5	15	18	25	30	36	50	60	75	90	100	120	150	180	
5IK90GU-AF□ 5IK90GU-EF□ 5IK90GU-CF□ 5IK90GU-HF□ 5IK90GU-SF□	5GU□RC 5GU□RT	50Hz	1.28	1.53	2.13	2.56	3.55	4.26	5.92	7.10	8.52	11.8	14.2	15.3	20.0	20.0	20.0	20.0	20.0	20.0	20.0	20.0
	容许力矩 Allowance Torque	60Hz	13.0	15.7	21.7	26.1	36.2	43.5	60.4	72.5	87.0	121	145	157	200	200	200	200	200	200	200	200
		60Hz	1.03	1.24	1.72	2.06	2.86	3.44	4.77	5.73	6.87	9.54	11.5	12.4	17.2	20.0	20.0	20.0	20.0	20.0	20.0	20.0
			10.5	12.6	17.5	21.0	29.2	35.1	48.7	58.4	70.1	97.4	117	126	175	200	200	200	200	200	200	200

## 感应尺寸图 Induction Type Drawing

5IK90GU-AF□/5GU□RC 5IK90GU-EF□/5GU□RC	5IK90GU-CF□/5GU□RC 5IK90GU-HF□/5GU□RC	5IK90GU-SF□/5GU□RC	5IK90GU-AF□/5GU□RT 5IK90GU-EF□/5GU□RT	5IK90GU-CF□/5GU□RT 5IK90GU-HF□/5GU□RT	5IK90GU-SF□/5GU□RT
--	--	--------------------	--	--	--------------------





# 120W

FLAME SIZE □ 90mm  
AC GEAR MOTOR

## INDUCTION MOTOR SPECIFICATION

型号Model · 类型 Type 上段:齿轮轴 Upper:Pinion Shaft 下段(内):圆轴 Below:Round Shaft		输出功率 Output power W	电压 Voltage V	频率 Frequency Hz	电流 Current A	启动转矩 Starting Torque mN.m	额定转矩 Rated Torque mN.m	额定转速 Rated Speed r/min	电容器容量 Capacitor μF
导线型 Lead Wire Type 外形图Dimensions①	端子箱型 Terminal Box Type 外形图Dimensions②								
5IK120GU-AF (5IK120A-AF)	5IK120GU-AFT (5IK120A-AFT)	120	1ph 100	50	2.1	600	930	1250	30.0
				60	2.5		750	1550	
5IK120GU-EF (5IK120A-EF)	5IK120GU-EFT (5IK120A-EFT)	120	1ph 110	60	1.65	600	750	1550	25.0
				1ph 120	1.80				
5IK120GU-CF (5IK120A-CF)	5IK120GU-CFT (5IK120A-CFT)	120	1ph 220	50	1.0	650	930	1250	7.0
				1ph 230	0.95				
5IK120GU-HF (5IK120A-HF)	5IK120GU-HFT (5IK120A-HFT)	120	1ph 230	60	1.0	600	750	1550	
				1ph 230	0.95				
5IK120GU-SF (5IK120A-SF)	5IK120GU-SFT (5IK120A-SFT)	120	3ph 220	50	0.70	1850	930	1250	
				60	0.60		1600	750	

## REVERSIBLE MOTOR SPECIFICATION

型号Model · 类型 Type 上段:齿轮轴 Upper:Pinion Shaft 下段(内):圆轴 Below:Round Shaft		输出功率 Output power W	电压 Voltage V	频率 Frequency Hz	电流 Current A	启动转矩 Starting Torque mN.m	额定转矩 Rated Torque mN.m	额定转速 Rated Speed r/min	电容器容量 Capacitor μF
导线型 Lead Wire Type 外形图Dimensions①	端子箱型 Terminal Box Type 外形图Dimensions②								
5RK120GU-AF (5RK120A-AF)	5RK120GU-AFT (5RK120A-AFT)	120	1ph 100	50	2.25	700	930	1250	35.0
				60	2.85		750	1550	
5RK120GU-EF (5RK120A-EF)	5RK120GU-EFT (5RK120A-EFT)	120	1ph 110	60	1.90	720	650	1550	30.0
				1ph 120					
5RK120GU-CF (5RK120A-CF)	5RK120GU-CFT (5RK120A-CFT)	120	1ph 220	50	1.15	720	930	1250	8.0
				1ph 230					
5RK120GU-HF (5RK120A-HF)	5RK120GU-HFT (5RK120A-HFT)	120	1ph 220	60	1.20	720	750	1550	8.0
				1ph 230					

## SPEED CONTROL MOTOR SPECIFICATION

型号Model · 类型 Type 导线型 Lead Wire Type		最大 输出功率 Output power W	电压 Voltage V	频率 Frequency Hz	调速范围 Speed Control Range r/min	容许转矩 Allowance Torque		启动转矩 Starting Torque mN.m	电流 Current A	电容器容量 Capacitor μF
齿轮轴型 Pinion Shaft	圆轴型 Round Shaft					1200r/min mN.m	90r/min mN.m			
5IK120RGU-AF	5IK120RA-AF	120	1ph 100	50	90~1350	750	330	530	2.10	30
									60	
5IK120RGU-EF	5IK120RA-EF	120	1ph 110	60	90~1650	750	360	530	1.65	25
									1ph 120	
5IK120RGU-CF	5IK120RA-CF	120	1ph 220	50	90~1350	750	330	530	1.00	7.0
									1ph 230	
5IK120RGU-HF	5IK120RA-HF	120	1ph 220	60	90~1650	750	360	530	1.00	7.0
									1ph 230	

## Gear Motor-Torque Table

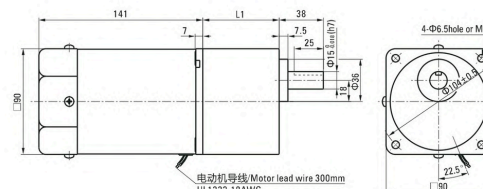
- 减速器另售/中间减速器另售。  
Gearhead and mid-gearbox can be sold separately.
  - 减速品型号的□中为减速比的数值。  
Enter the gear ratio in the box (□) within the model name.
  - 色表示与电动机同一方向运转,其他则为相反方向。  
The colored background indicates the same rotating direction of the motor while the rotating direction of others are opposite.
- 容许力矩单位 Allowance Torque Unit : 上段 Upside ( N.m ) /下段 Belowside ( kgf.cm )

类型 Type 电动机/减速机 Motor/Gearhead	减速比 Gear Ratio																					
	转速 Speed r/min	50Hz																				
		60Hz																				
5IK120GU-AF□ 5IK120GU-EF□ 5IK120GU-CF□ 5IK120GU-HF□ 5IK120GU-SF□	5GU□KB 5GU□K	500	417	300	250	200	166	120	100	83	60	50	41	30	25	20	16	15	12.5	10	8.3	7.5
		600	500	360	300	240	200	144	120	100	72	60	50	36	30	24	20	18	15	12	10	9
	50Hz	23.4	27.5	38.7	45.9	57.1	69.3	86.7	104	124	156	187	200	200	200	200	200	200	200	200	200	200
		1.8	2.2	3.0	3.6	4.6	5.5	6.8	8.2	9.8	12.4	14.9	17.8	20	20	20	18.8	20	20	20	20	20
	60Hz	18.3	22.4	30.6	36.7	46.9	56.1	69.5	83.6	100	126	152	181	200	200	200	192	200	200	200	200	200

## 外形图 (单位 mm) Dimensions(Unit mm)

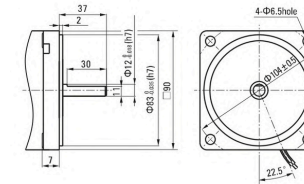
减速器附有安装用螺丝Mounting screws are included with gearhead.

- 导线型 Lead Wiring Type (感应/可逆Induction/Reversible Motor)  
重量 Weight : 电动机 Motor : 3.4kg 减速器 Gearhead : 1.5kg

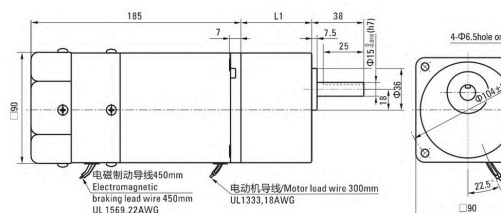


## 圆轴型的转轴部分 Shaft Section Of Round Shaft Type

除重量及轴部外电动机外形与齿轮轴型相同。  
Excluding weight and the shaft section motor shape are the same as those of the pinion shaft type.

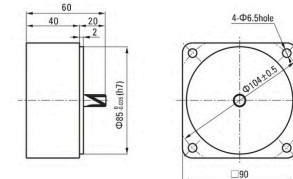


- 导线型 Lead Wiring Type (刹车 Brake Motors)  
重量 Weight : 电动机 Motor : 4.3kg 减速器 Gearhead : 1.5kg

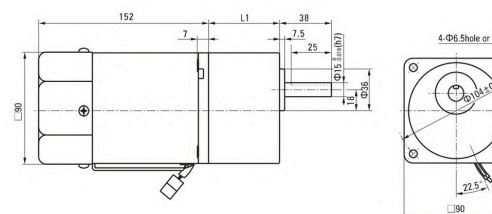


## 中间减速器 Decimal Gearhead

可安装在GU齿轮轴型上Can be connected to GU pinion shaft type  
电动机外形与齿轮轴型相同  
5GU10XK  
重量 Weight : 0.6kg



- 导线型 Lead Wiring Type (调速 Speed Control Motors)  
重量 Weight : 电动机 Motor : 3.5kg 减速器 Gearhead : 1.5kg

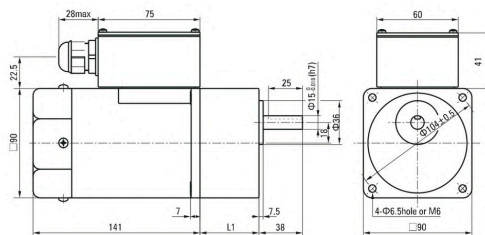


减速器型号 Gearhead Model	减速比 Gear Ratio	L1
5GU□KB	3~200	65.5

减速器型号的□中为减速比的数值  
Enter the gear ratio in the box (□) within the model name

带端子箱型 Terminal Box Type (感应/可逆 Induction/Reversible Motor)

重量 Weight : 电动机 Motor : 3.55kg 减速器 Gearhead : 1.5kg



减速器型号 Gearhead Model	减速比 Gear Ratio	L1
5GU□KB	3~200	65.5

●减速器型号的□中为减速比的数值  
Enter the gear ratio in the box (□) within the model name

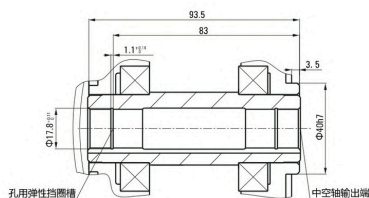
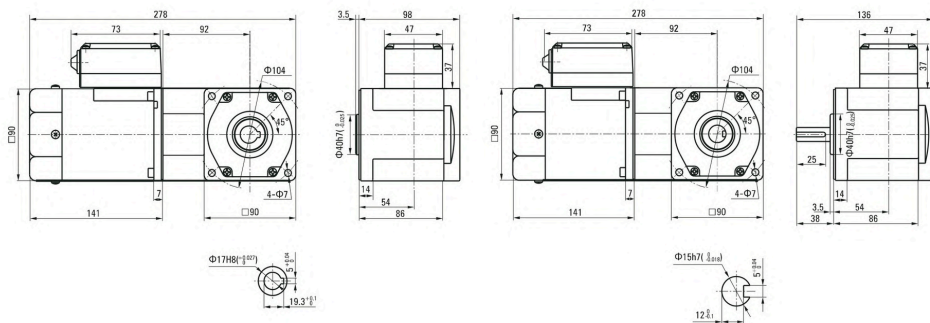
SPIRAL BEVEL RIGHT ANGLE

容许力矩单位 Allowance Torque Unit: 上段 Upside (N.m) / 下段 Belowside (kgf.cm)

机型Type	减速比Gear Ratio	3	3.6	5	6	7.5	9	12.5	15	18	25	30	36	50	60	75	90	100	120	150	180	
电动机/减速器 Motor/Gearhead	转速Speed r/min	50Hz	500	417	300	250	200	166	120	100	83	60	50	42	30	25	20	16	15	12	10	8
		60Hz	600	500	360	300	240	200	144	120	100	72	60	50	36	30	24	20	18	15	12	10
5IK120GU-AF□ 5IK120GU-EF□ 5IK120GU-CF□ 5IK120GU-HF□ 5IK120GU-SF□	容许力矩 Allowance Torque	50Hz	5GU□RC	1.70	2.05	2.84	3.41	4.73	5.68	7.89	9.47	11.4	15.8	18.9	20.0	20.0	20.0	20.0	20.0	20.0	20.0	20.0
			5GU□RT	17.4	20.9	29.0	34.8	48.3	58.0	80.5	96.6	116	161	193	200	200	200	200	200	200	200	200
		60Hz	5GU□RC	1.37	1.65	2.29	2.75	3.82	4.58	6.36	7.64	9.16	12.7	15.3	16.5	20.0	20.0	20.0	20.0	20.0	20.0	20.0
			5GU□RT	14.0	16.8	23.4	28.0	39.0	46.7	64.9	77.9	93.5	130	156	168	200	200	200	200	200	200	200

感应尺寸图 Induction Type Drawing

5IK120GU-AF□/5GU□RC	5IK120GU-CF□/5GU□RC	5IK120GU-SF□/5GU□RC	5IK120GU-AF□/5GU□RT	5IK120GU-CF□/5GU□RT	5IK120GU-SF□/5GU□RT
5IK120GU-EF□/5GU□RC	5IK120GU-HF□/5GU□RC		5IK120GU-EF□/5GU□RT	5IK120GU-HF□/5GU□RT	



# 120W

FLAME SIZE □104mm  
AC GEAR MOTOR

INDUCTION MOTOR SPECIFICATION

型号Model · 类型 Type 上段:齿轴轴 Upper:Pinion Shaft 下段()内:圆轴 Below:Round Shaft		输出功率 Output power W	电压 Voltage V	频率 Frequency Hz	电流 Current A	启动转矩 Starting Torque mN.m	额定转矩 Rated Torque mN.m	额定转速 Rated Speed r/min	电容器容量 Capacitor μF
导线型 Lead Wire Type 外形图Dimensions①	带端子箱型 Terminal Box Type 外形图Dimensions②								
6IK120GU-AF (6IK120A-AF)	6IK120GU-AFT (6IK120A-AFT)	120	1ph 100	50	2.10	600	930	1250	30.0
				60	2.50		750	1550	
6IK120GU-EF (6IK120A-EF)	6IK120GU-EFT (6IK120A-EFT)	120	1ph 110	60	1.70	600	750	1550	20.0
			1ph 120		1.80				
6IK120GU-CF (6IK120A-CF)	6IK120GU-CFT (6IK120A-CFT)	120	1ph 220	50	0.95	750	930	1250	8.0
			1ph 230						
6IK120GU-HF (6IK120A-HF)	6IK120GU-HFT (6IK120A-HFT)	120	1ph 220	60	0.95	700	750	1550	
			1ph 230		1.00				
6IK120GU-SF (6IK120A-SF)	6IK120GU-SFT (6IK120A-SFT)	120	3ph 220	60	0.70	2200	890	1300	
					2000	730	1600		

REVERSIBLE MOTOR SPECIFICATION

型号Model · 类型 Type 导线型 Lead Wire Type		额定 Rating	输出功率 Output power W	电压 Voltage V	频率 Frequency Hz	电流 Current A	启动转矩 Starting Torque mN.m	额定转矩 Rated Torque mN.m	额定转速 Rated Speed r/min	电容器容量 Capacitor μF
齿轮轴型 Pinion Shaft	圆轴型 Round Shaft									
6RK120GU-AFM	6RK120A-AFM	30min	120	1ph 100	50	2.1	600	930	1250	35
					60	2.5		750	1550	
6RK120GU-EFM	6RK120A-EFM	30min	120	1ph 110	60	1.70	600	750	1550	30
				1ph 120		1.80				
6RK120GU-CFM	6RK120A-CFM	30min	120	1ph 220	50	0.95	750	930	1250	8.0
				1ph 230						
6RK120GU-HFM	6RK120A-HFM	30min	120	1ph 220	60	0.95	700	750	1550	
				1ph 230		1.0				
6RK120GU-SFM	6RK120A-SFM	30min	120	3ph 220	60	0.70	2000	730	1550	

SPEED CONTROL MOTOR SPECIFICATION

型号Model · 类型 Type 导线型 Lead Wire Type		最大 输出 功率 Output power W	电压 Voltage V	频率 Frequency Hz	调速范围 Speed Control Range r/min	容许转矩 Allowance Torque		启动转矩 Starting Torque mN.m	电流 Current A	电容器容量 Capacitor μF
齿轮轴型 Pinion Shaft	圆轴型 Round Shaft					1200r/min mN.m	90r/min mN.m			
6IK120RGU-AF	6IK120RA-AF	120	1ph 100	50	90~1350	750	360	530	2.10	30
				60					2.50	
6IK120RGU-EF	6IK120RA-EF	120	1ph 110	60	90~1650	750	360	520	1.70	20
			1ph 120						1.80	
6IK120RGU-CF	6IK120RA-CF	120	1ph 220	50	90~1350	750	330	530	0.95	8.0
			1ph 230							
6IK120RGU-HF	6IK120RA-HF	120	1ph 220	60	90~1650	750	360	530	0.95	8.0
			1ph 230						1.00	





# 140W

FLAME SIZE □ 104mm  
AC GEAR MOTOR

## INDUCTION MOTOR SPECIFICATION

型号Model · 类型 Type 上段:齿轴轴 Upper:Pinion Shaft 下段()内:圆轴 Below:Round Shaft		输出功率 Output power W	电压 Voltage V	频率 Frequency Hz	电流 Current A	启动转矩 Starting Torque mN.m	额定转矩 Rated Torque mN.m	额定转速 Rated Speed r/min	电容器容量 Capacitor μF
导线型 Lead Wire Type 外形图Dimensions①	带端子箱型 Terminal Box Type 外形图Dimensions②								
6IK140GU-AF (6IK140A-AF)	6IK140GU-AFT (6IK140A-AFT)	140	1ph 100	50	2.7	700	1080	1250	35.0
				60	3.0		870	1550	
6IK140GU-EF (6IK140A-EF)	6IK140GU-EFT (6IK140A-EFT)	140	1ph 110	60	1.80	700	850	1600	25.0
			1ph 120		1.95				
6IK140GU-CF (6IK140A-CF)	6IK140GU-CFT (6IK140A-CFT)	140	1ph 220	50	1.05	850	1040	1350	10.0
			1ph 230		1.15				
6IK140GU-HF (6IK140A-HF)	6IK140GU-HFT (6IK140A-HFT)	140	1ph 220	60	1.05	750	850	1600	-
			1ph 230		1.15				
6IK140GU-SF (6IK140A-SF)	6IK140GU-SFT (6IK140A-SFT)	140	3ph 220	50	0.85	2700	1080	1250	-
				60	0.75				

## REVERSIBLE MOTOR SPECIFICATION

型号Model · 类型 Type 导线型 Lead Wire Type		额定 Rating	输出功率 Output power W	电压 Voltage V	频率 Frequency Hz	电流 Current A	启动转矩 Starting Torque mN.m	额定转矩 Rated Torque mN.m	额定转速 Rated Speed r/min	电容器容量 Capacitor μF
齿轴轴型 Pinion Shaft	圆轴型 Round Shaft									
6RK140GU-AFM	6RK140A-AFM	30min	140	1ph 100	50	2.7	700	1080	1250	35
					60	3.0		870	1550	
6RK140GU-EFM	6RK140A-EFM	30min	140	1ph 110	60	1.80	700	850	1550	25
				1ph 120		1.95				
6RK140GU-CFM	6RK140A-CFM	30min	140	1ph 220	50	1.05	850	1040	1250	10
				1ph 230		1.15				
6RK140GU-HFM	6RK140A-HFM	30min	140	1ph 220	60	1.05	750	850	1550	-
				1ph 230		1.15				
6RK140GU-SM	6RK140A-SM	30min	140	3ph 220	50	0.85	2700	1080	1250	-
					60	0.75				

## SPEED CONTROL MOTOR SPECIFICATION

型号Model · 类型 Type 导线型 Lead Wire Type		最大 输出功率 Output power W	电压 Voltage V	频率 Frequency Hz	调速范围 Speed Control Range r/min	容许转矩 Allowance Torque		启动转矩 Starting Torque mN.m	电流 Current A	电容器容量 Capacitor μF
齿轴轴型 Pinion Shaft	圆轴型 Round Shaft					1200r/min mN.m	90r/min mN.m			
6IK140RGU-AF	6IK140RA-AF	140	1ph 100	50	90~1350	830	420	620	2.70	35
									60	
6IK140RGU-EF	6IK140RA-EF	140	1ph 110	60	90~1650	830	450	620	1.80	25
			1ph 120						1.95	
6IK140RGU-CF	6IK140RA-CF	140	1ph 220	50	90~1350	830	420	620	1.05	10
			1ph 230						1.15	
6IK140RGU-HF	6IK140RA-HF	140	1ph 220	60	90~1650	830	450	620	1.05	10
			1ph 230						1.15	

## Gear Motor-Torque Table

- 减速器另售·中间减速器另售。  
Gearhead and mid-gearbox can be sold separately.

Enter the gear ratio in the box (□) within the model name.

- 减速品型号的□中为减速比的数值。

Enter the gear ratio in the box (□) within the model name.

- 色表示与电动机同一方向运转，其他则为相反方向。

The colored background □ indicates the same rotating direction of the motor while the rotating direction of others are opposite.

容许力矩单位 Allowance Torque Unit : 上段 Upside ( N.m ) /下段 Belowside ( kgf.cm )

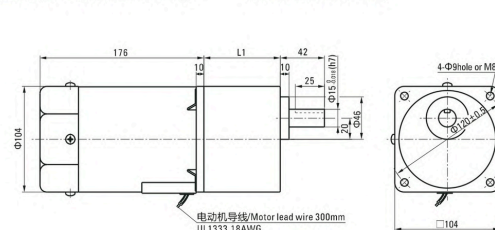
类型 Type 电动机/减速机 Motor/Gearhead	减速比 Gear Ratio	容许力矩单位 Allowance Torque Unit																						
		3	3.6	5	6	7.5	9	12.5	15	18	25	30	36	50	60	75	90	100	120	150	180	200		
6IK140GU-AF□ 6IK140GU-EF□ 6IK140GU-SF□	6GU□K	50Hz	500	417	300	250	200	166	120	100	83	60	50	41	30	25	20	16	15	12.5	10	8.3	7.5	
		50Hz	2.6	3.1	4.4	5.2	6.6	7.9	9.9	11.8	14.2	17.8	21.4	25.7	35.6	40	40	40	40	40	40	40	40	40
		50Hz	26.5	31.6	44.8	53.0	67.3	80.6	101	120	144	181	218	262	363	400	400	400	400	400	400	400	400	400
		50Hz	2.5	3.0	4.2	5.1	6.3	7.6	9.5	11.4	13.7	17.2	20.6	247	34.3	40	40	40	40	40	40	40	40	
		50Hz	25.5	30.6	42.8	52.0	63.2	77.5	96.9	116	139	175	210	252	349	400	400	400	400	400	400	400	400	

## 外形图 (单位 mm) Dimensions(Unit mm)

减速器附有安装用螺丝 Mounting screws are included with gearhead.

- 导线型 Lead Wiring Type (感应/可逆 Induction/Reversible Motor)

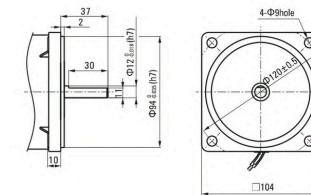
重量 Weight : 电动机 Motor : 5.0kg 减速器 Gearhead : 2.1kg



- 圆轴型的转轴部分 Shaft Section Of Round Shaft Type

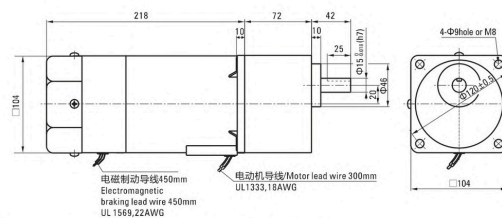
除重量及轴部外电动机外形与齿轮轴型相同。

Excluding weight and the shaft section motor shape are the same as those of the pinion shaft type.



- 导线型 Lead Wiring Type (刹车 Brake Motors)

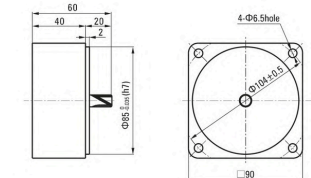
重量 Weight : 电动机 Motor : 5.85kg 减速器 Gearhead : 2.1kg



- 中间减速器 Decimal Gearhead

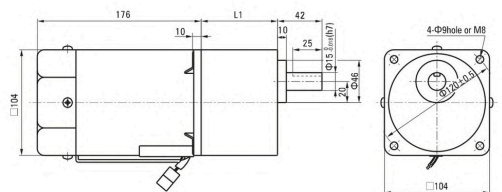
可安装在GU齿轴轴型上 Can be connected to GU pinion shaft type 电动机外形与齿轴轴型相同 5GU10XK

重量 Weight : 0.6kg



- 导线型 Lead Wiring Type (调速 Speed Control Motors)

重量 Weight : 电动机 Motor : 5.1kg 减速器 Gearhead : 2.1kg



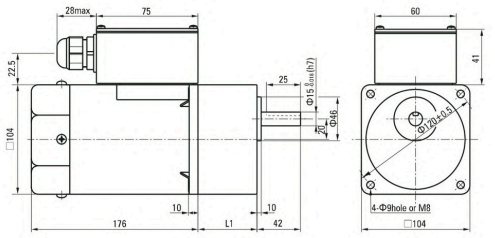
减速器型号 Gearhead Model	减速比 Gear Ratio	L1
6GU□K	3~200	72

- 减速器型号的□中为减速比的数值

Enter the gear ratio in the box (□) within the model name

● 带端子箱型 Terminal Box Type (感应/可逆 Induction/Reversible Motor)

重量 Weight : 电动机 Motor : 5.15kg 减速器 Gearhead : 2.1kg



减速器型号 Gearhead Model	减速比 Gear Ratio	L1
6GU□K	3~200	72

● 减速器型号的□中为减速比的数值  
Enter the gear ratio in the box (□) within the model name

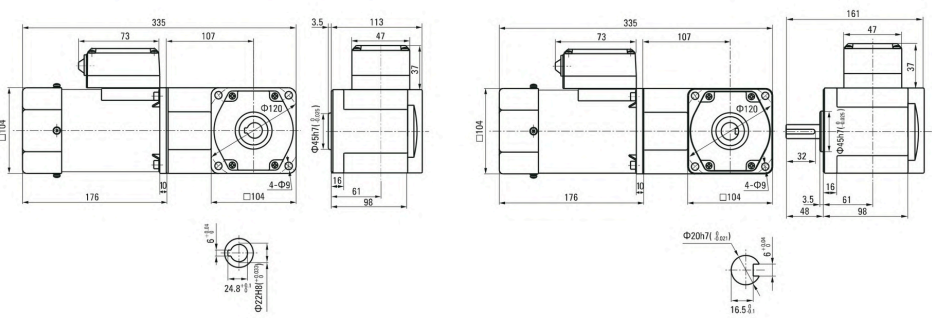
SPIRAL BEVEL RIGHT ANGLE

容许力矩单位 Allowance Torque Unit: 上段 Upside (N.m) / 下段 Belowside (kgf.cm)

机型Type 电动机/减速器 Motor/Gearhead	减速比Gear Ratio	容许力矩 Allowance Torque																				
		3	3.6	5	6	7.5	9	12.5	15	18	25	30	3.6	50	60	75	90	100	120	150	180	
6IK140GU-AF□ 6IK140GU-EF□ 6IK140GU-CF□ 6IK140GU-HF□ 6IK140GU-SF□	6GU□RC 6GU□RT	50Hz	500	417	300	250	200	166	120	100	83	60	50	417	30	25	20	16	15	12	10	8
		60Hz	600	500	360	300	240	200	144	120	100	72	60	500	36	30	24	20	18	15	12	10
		50Hz	1.99	2.39	3.31	3.98	4.97	6.63	9.21	11.0	13.3	18.4	22.1	26.5	33.1	39.8	49.7	59.6	60.0	60.0	60.0	60.0
		60Hz	2.03	24.3	33.8	40.6	50.7	67.6	93.9	113	135	188	225	271	338	406	507	600	600	600	600	600
		60Hz	1.60	1.92	2.67	3.21	4.01	5.34	7.42	8.91	10.7	14.8	17.8	21.4	26.7	32.1	40.1	48.1	53.4	60.0	60.0	60.0
		60Hz	16.4	19.6	27.3	32.7	40.9	54.5	75.8	90.9	109	152	182	218	273	327	409	491	545	600	600	600

感应尺寸图 Induction Type Drawing

6IK140GU-AF□/6GU□RC 6IK140GU-CF□/6GU□RC 6IK140GU-SF□/6GU□RC 6IK140GU-AF□/6GU□RT 6IK140GU-CF□/6GU□RT 6IK140GU-HF□/6GU□RT 6IK140GU-EF□/6GU□RC 6IK140GU-HF□/6GU□RC 5IK140GU-SF□/6GU□RT



200W

FLAME SIZE □ 104mm  
AC GEAR MOTOR

INDUCTION MOTOR SPECIFICATION

型号Model · 类型 Type 上段:齿轴轴 Upper:Pinion Shaft 下段()内:圆轴 Below:Round Shaft		输出功率 Output power W	电压 Voltage V	频率 Frequency Hz	电流 Current A	启动转矩 Starting Torque mN.m	额定转矩 Rated Torque mN.m	额定转速 Rated Speed r/min	电容器容量 Capacitor μF
导线型 Lead Wire Type 外形图Dimensions①	带端子箱型 Terminal Box Type 外形图Dimensions②								
6IK200GU-AF (6IK200A-AF)	6IK200GU-AFT (6IK200A-AFT)	200	1ph 100	50	3.2	900	1520	1250	45.0
				60	3.5				
6IK200GU-EF (6IK200A-EF)	6IK200GU-EFT (6IK200A-EFT)	200	1ph 110	60	2.75	850	1230	1550	35.0
			1ph 120	60	2.65				
6IK200GU-CF (6IK200A-CF)	6IK200GU-CFT (6IK200A-CFT)	200	1ph 220	50	1.40	1000	1520	1250	10.0
			1ph 230	50	1.40				
6IK200GU-HF (6IK200A-HF)	6IK200GU-HFT (6IK200A-HFT)	200	1ph 220	60	1.40	900	1230	1550	-
			1ph 230	60	1.40				
6IK200GU-SF (6IK200A-SF)	6IK200GU-SFT (6IK200A-SFT)	200	3ph 220	50	1.20	3400	1520	1250	-
				60	1.0				

REVERSIBLE MOTOR SPECIFICATION

型号Model · 类型 Type 导线型 Lead Wire Type		额定 Rating	输出功率 Output power W	电压 Voltage V	频率 Frequency Hz	电流 Current A	启动转矩 Starting Torque mN.m	额定转矩 Rated Torque mN.m	额定转速 Rated Speed r/min	电容器容量 Capacitor μF
齿轴轴型 Pinion Shaft	圆轴型 Round Shaft									
6RK200GU-AFM	6RK200A-AFM	30min	200	1ph 100	50	3.2	900	1385	1250	45
					60	3.5				
6RK200GU-EFM	6RK200A-EFM	30min	200	1ph 110	60	2.75	850	1120	1550	35
				1ph 120	60	2.65				
6RK200GU-CFM	6RK200A-CFM	30min	200	1ph 220	50	1.40	1100	1385	1250	12
				1ph 230	50	1.40				
6RK200GU-HFM	6RK200A-HFM	30min	200	1ph 220	60	1.40	1000	1120	1550	-
				1ph 230	60	1.40				
6RK200GU-SFM	6RK200A-SFM	30min	200	3ph 220	50	1.20	3400	1385	1250	-
					60	1.00				

SPEED CONTROL MOTOR SPECIFICATION

型号Model · 类型 Type 导线型 Lead Wire Type		最大 输出功率 Output power W	电压 Voltage V	频率 Frequency Hz	调速范围 Speed Control Range r/min	容许转矩 Allowance Torque		启动转矩 Starting Torque mN.m	电流 Current A	电容器容量 Capacitor μF
齿轴轴型 Pinion Shaft	圆轴型 Round Shaft					1200r/min	90r/min			
6IK200RGU-AF	6IK200RA-AF	200	1ph 100	50	90~1350	920	500	680	3.2	45
									60	
6IK200RGU-EF	6IK200RA-EF	200	1ph 110	60	90~1650	920	500	680	2.75	35
			1ph 120						2.65	
6IK200RGU-CF	6IK200RA-CF	200	1ph 220	50	90~1350	920	500	680	1.40	10
			1ph 230						1.40	
6IK200RGU-HF	6IK200RA-HF	200	1ph 220	60	90~1650	920	500	680	1.40	10
			1ph 230						1.40	



## Gear Motor-Torque Table

- 减速器另售 中间减速器另售。

Gearhead and mid-gearbox can be sold separately.

- 减速品型号的□中为减速比的数值。

Enter the gear ratio in the box(□) within the model name.

- 色表示与电动机同一方向运转，其他则为相反方向。

The colored background □ indicates the same rotating direction of the motor while the rotating direction of others are opposite.

容许力矩单位 Allowance Torque Unit : 上段 Upside ( N.m ) / 下段 Belowside ( kgf.cm )

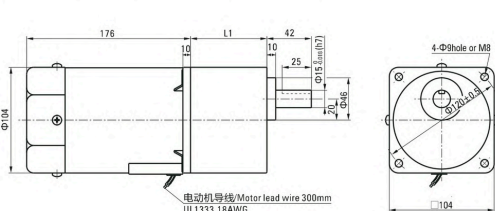
类型 Type 电动机/减速器 Motor/Gearhead	减速比 Gear Ratio	容许力矩																					
		3	3.6	5	6	7.5	9	12.5	15	18	25	30	36	50	60	75	90	100	120	150	180	200	
6IK200GU-AF□ 6IK200GU-EF□ 6IK200GU-CF□ 6IK200GU-HF□ 6IK200GU-SF□	转速 Speed r/min	50Hz	500	417	300	250	200	166	120	100	83	60	50	42	30	25	20	16	15	12.5	10	8.3	7.5
	60Hz	600	500	360	300	240	200	144	120	100	72	60	50	36	30	24	20	18	15	12	10	9	
6GU□K	50Hz	3.71	4.46	6.19	7.43	9.28	11.1	13.9	16.7	20.1	25.2	30.3	36.3	40	40	40	40	40	40	40	40	40	40
	60Hz	2.99	3.59	4.99	5.99	7.49	8.98	11.2	13.5	16.2	20.3	24.4	29.3	40	40	40	40	40	40	40	40	40	40
		30.6	36.7	50.9	61.1	76.4	91.7	115	138	165	207	249	299	400	400	400	400	400	400	400	400	400	400

## 外形图 (单位 mm) Dimensions(Unit mm)

减速器附有安装用螺丝 Mounting screws are included with gearhead.

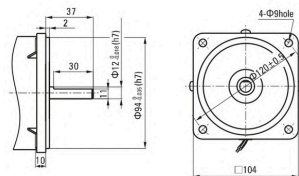
- 导线型 Lead Wiring Type (感应/可逆 Induction/Reversible Motor)

重量 Weight : 电动机 Motor : 5.0kg 减速器 Gearhead : 2.1kg



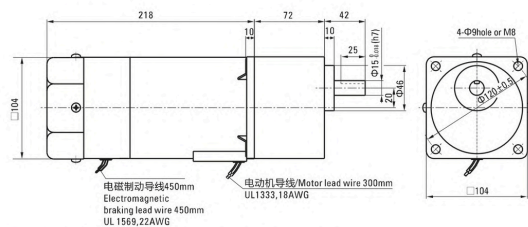
- 圆轴型的转轴部分 Shaft Section Of Round Shaft Type

除重量及轴部外电动机外形与齿轮轴型相同。  
Excluding weight and the shaft section motor shape are the same as those of the pinion shaft type.



- 导线型 Lead Wiring Type (刹车 Brake Motors)

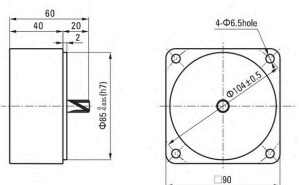
重量 Weight : 电动机 Motor : 5.9kg 减速器 Gearhead : 2.1kg



- 中间减速器 Decimal Gearhead

可安装在GU齿轮轴型上 Can be connected to GU pinion shaft type  
电动机外形与齿轮轴型相同  
Motor shape same as gear shaft type

重量 Weight : 0.65kg



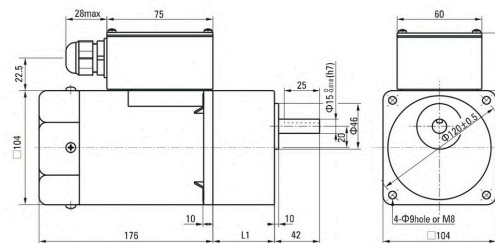
减速器型号 Gearhead Model	减速比 Gear Ratio	L1
6GU□K	3~200	72

- 减速器型号的□中为减速比的数值

Enter the gear ratio in the box (□) within the model name

- 带端子箱型 Terminal Box Type (感应/可逆 Induction/Reversible Motor)

重量 Weight : 电动机 Motor : 5.15kg 减速器 Gearhead : 2.1kg



减速器型号 Gearhead Model	减速比 Gear Ratio	L1
6GU□K	3~200	72

- 减速器型号的□中为减速比的数值

Enter the gear ratio in the box (□) within the model name

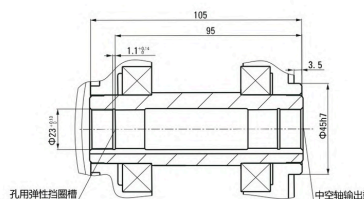
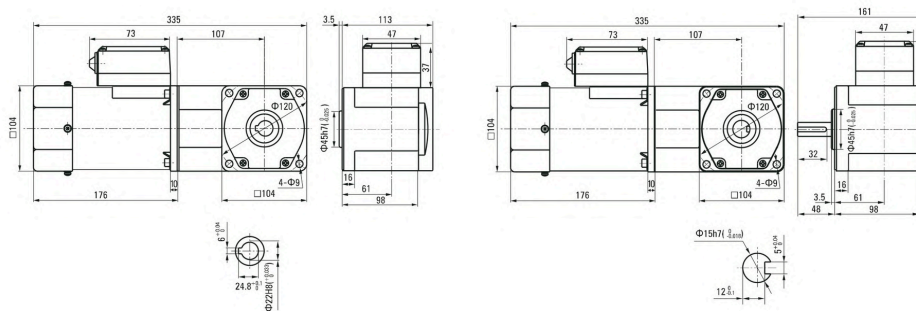
## SPIRAL BEVEL RIGHT ANGLE

容许力矩单位 Allowance Torque Unit: 上段 Upside (N.m) / 下段 Belowside (kgf.cm)

机型 Type 电动机/减速器 Motor/Gearhead	减速比 Gear Ratio	容许力矩																					
		3	3.6	5	6	7.5	9	12.5	15	18	25	30	36	50	60	75	90	100	120	150	180		
6IK200GU-AF□ 6IK200GU-EF□ 6IK200GU-CF□ 6IK200GU-HF□ 6IK200GU-SF□	转速 Speed r/min	50Hz	500	417	300	250	200	166	120	100	83	60	50	42	30	25	20	16	15	12	10	8	
	60Hz	600	500	360	300	240	200	144	120	100	72	60	50	36	30	24	20	18	15	12	10	10	
6GU□RC 6GU□RT	容许力矩 Allowance Torque	50Hz	3.71	4.46	6.19	7.43	9.28	11.1	13.9	16.7	20.1	25.2	30.3	36.3	50.4	60.0	60.0	60.0	60.0	60.0	60.0	60.0	60.0
	60Hz	2.99	3.59	4.99	5.99	7.49	8.98	11.2	13.5	16.2	20.3	24.4	29.3	40.7	48.8	60.0	60.0	60.0	60.0	60.0	60.0	60.0	60.0
		30.6	36.7	50.9	61.1	76.4	91.7	115	138	165	207	249	299	415	498	600	600	600	600	600	600	600	600

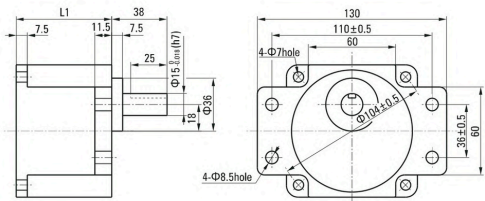
- 感应尺寸图 Induction Type Drawing

6IK200GU-AF□/6GU□RC	6IK200GU-CF/6GU□RC	6IK200GU-SF□/6GU□RC	6IK200GU-AF□/6GU□RT	6IK200GU-CF/6GU□RT	6IK200GU-SF□/6GU□RT
---------------------	--------------------	---------------------	---------------------	--------------------	---------------------



● 60W, 90W, 120W 凸缘安装型减速器 60W, 90W, 120W Flange Mounting Reducer

可安装在GU齿轮轴型上  
Can be mounted on GU type gear shaft  
5GU□K  
重量Weight: 1.5kg

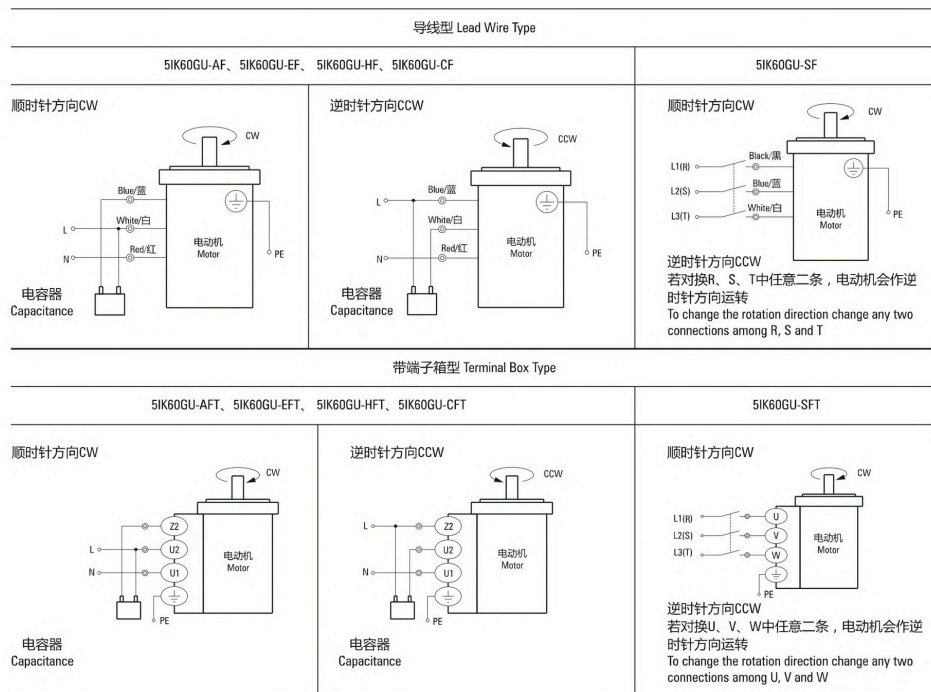


减速器型号 Gearhead Model	减速比 Gear Ratio	L1
6GU□K	3~200	72

● 减速器型号的□中为减速比的数值  
Enter the gear ratio in the box (□) within the model name

■ 连接图 Wiring Diagram (感应电机)

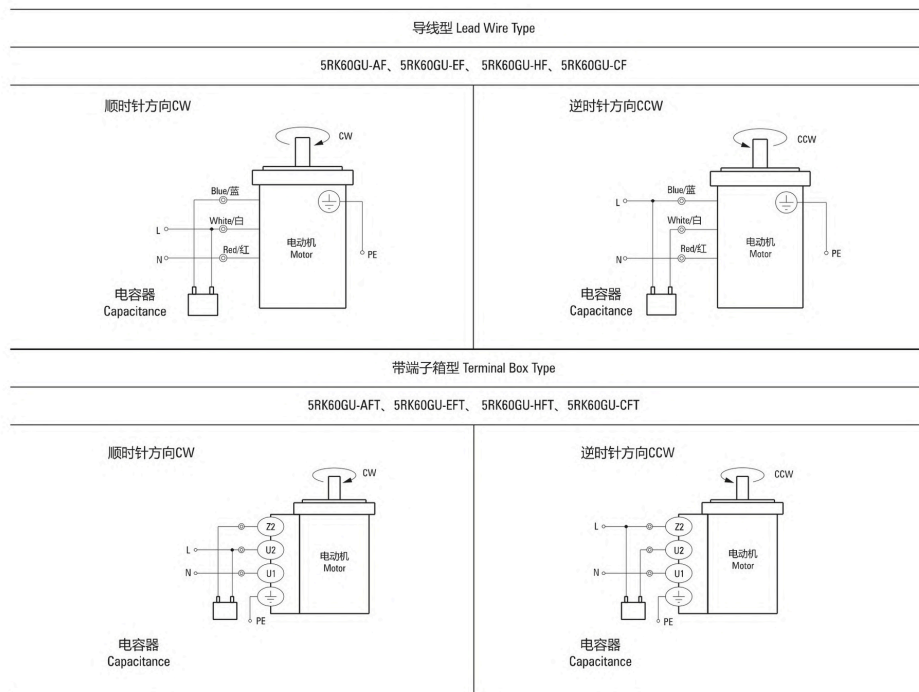
- 运转方向指从电动机轴看来的方向。CW表示顺时针方向，CCW表示逆时针方向。  
The direction of motor rotation is as viewed from the shaft end of motor. CW represents the clockwise direction, while CCW represents the counterclockwise direction.
- 表中所记品名为齿轮轴型，圆轴型亦同。  
Name indicated in the list is pinion shaft type, also valid for the equivalent round shaft type.



**请注意 Note:**  
单相电动机运转方向的转换应在电动机停止后进行。  
Change the direction of single-phase motor rotation only after bringing the motor to a stop.  
若在电动机运转时转换运转方向，可能发生无法转换运转方向或须费时较久的情况。  
If an attempt is made to change the direction of rotation while the motor is rotating, motor may ignore reversing command or change its direction of rotation after some delay.

■ 连接图 Wiring Diagram (可逆电机)

- 运转方向指从电动机轴看来的方向。CW表示顺时针方向，CCW表示逆时针方向。  
The direction of motor rotation is as viewed from the shaft end of motor. CW represents the clockwise direction, while CCW represents the counterclockwise direction.
- 表中所记品名为齿轮轴型，圆轴型亦同。  
Name indicated in the list is pinion shaft type, also valid for the equivalent round shaft type.



**请注意 Note:**  
单相电动机运转方向的转换应在电动机停止后进行。  
Change the direction of single-phase motor rotation only after bringing the motor to a stop.  
若在电动机运转时转换运转方向，可能发生无法转换运转方向或须费时较久的情况。  
If an attempt is made to change the direction of rotation while the motor is rotating, motor may ignore reversing command or change its direction of rotation after some delay.

## ■ 连接图 Wiring Diagram (刹车电机)

- 运转方向指从电动机轴看来的方向。CW表示顺时针方向，CCW表示逆时针方向。  
The direction of motor rotation is as viewed from the shaft end of motor. CW represents the clockwise direction, while CCW represents the counterclockwise direction.
- 表中所记品名为齿轮轴型，圆轴型亦同。Name indicated in the list is pinion shaft type, also valid for the equivalent round shaft type.

单相电动机 Single-phase Motor
5RK60GU-AFM, 5RK60GU-EFM, 5RK60GU-CFM, 5RK60GU-HFM

SW1为电动机的运行/停止及电磁制动操作作用开关。(联动)

SW1 operates both motor and electromagnetic brake action. (Switched Simultaneously)

SW1设定于ON时，电磁制动解除，电动机开始运行。

The motor will rotate when SW1 is switched simultaneously to ON.

SW1设定于OFF时，电动机停止，电磁制动开始工作。

When SW1 is switched simultaneously to OFF, the motor stops immediately with the electromagnetic brake and holds the load.

在电动机停止状态下解除电磁制动时，应将SW1设定为非联动，而仅将黑色导线侧的触点设定为ON。

If you wish to release the brake while the motor is stopped, set the SW1 to off and connection point at the side of black lead to on.

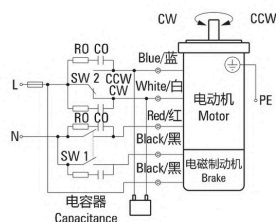
运转方向。Direction of Rotation.

将SW2转换至CW侧时，电动机作顺时针方向运转。

To rotate the motor in a clockwise (CW) direction, turn SW2 to CW.

将SW2转换至CCW侧时，电动机作逆时针方向运转。

To rotate the motor in a counterclockwise (CCW) direction, turn SW2 to CCW.



开关号码 Switch No.	开关的触点容量Capacitor of Switch Connection Point		参考 Note
	单相100V、 110/120V输入 Single-Phase 100 VAC, 110/120 VAC Input	单相220V、 230V输入 Single-Phase 200 VAC, 220/230 VAC Input	
SW1	AC125V 3A以上 (感应负载) 125 VAC 3A minimum (Inductive Load)	AC250V 1.5A以上 (感应负载) 250 VAC 1.5A A minimum (Inductive Load)	联动Switched Simultaneously
SW2			

三相电动机 Three-phase Motor
5RK60GU-SFM

SW1为电动机的运行/停止及电磁制动操作作用开关。(联动)

SW1 operates both motor and electromagnetic brake action. (Switched Simultaneously)

SW1设定于ON时，电磁制动解除，电动机开始运行。

The motor will rotate when SW1 is switched simultaneously to ON.

SW1设定于OFF时，电动机停止，电磁制动开始工作。

When SW1 is switched simultaneously to OFF, the motor stops immediately with the electromagnetic brake and holds the load.

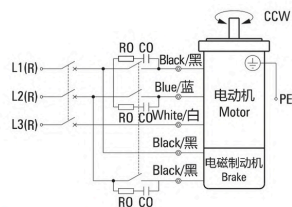
在电动机停止状态下解除电磁制动时，应将SW1设定为非联动，而仅将黑色导线侧的触点设定为ON。

If you wish to release the brake while the motor is stopped, set the SW1 to off and connection point at the side of black lead to on.

运转方向。Direction of Rotation.

若对换R、S、T中任意二条，电动机作逆时针方向运转。

To change the rotation direction, change any two connections between R, S and T.



开关号码 Switch No.	开关的触点容量Capacitor of Switch Connection Point	参考 Note
SW1	AC250V 1.5A以上 (感应负载) 250 VAC 1.5 A minimum (Inductive Load)	联动 Switched Simultaneously

### 请注意Notes:

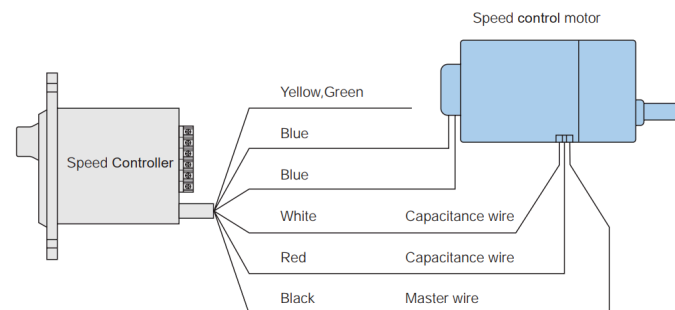
- RO CO为吸收电涌电压用CR电路。[R0=5~200Ω, C0=0.1~0.2μF, 200WV (400WV)] 请使用选购配件EPCR1201-2。
- R0 and C0 indicate surge suppressor circuit. [R0=5~200Ω, C0=0.1~0.2 μF, 200 WV (400 WV)] EPCR1201-2 is available as an optional surge suppressor.

## Product Model Descriptions

<b>S</b>	<b>U</b>	<b>X</b>	<b>52</b>	-	<b>90W</b>
(1)	(2)	(3)	(4)		(5)

(1) Corporate code	SAS
(2) Panel serie	U serie
(3) Functions	S-basic model, X-digital display model, L-torque model
(4) Power voltage	51-110V 52-220V
(5) Application motor power	6~250W

## Wiring Diagram



## Motor Drive Controller

UX Series

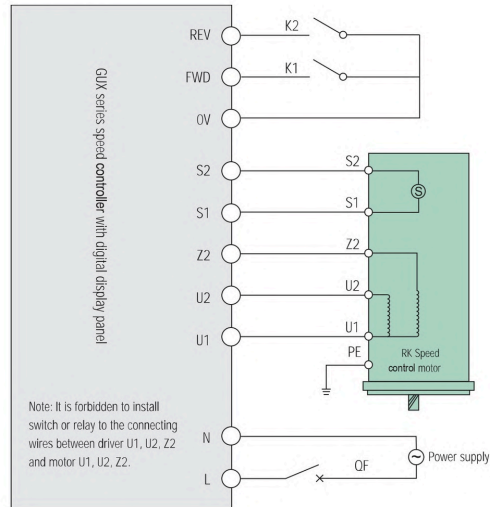
## UX Series Speed Controller with Digital Display Panel

### Features

- MCU digital control technology that features great variety of functions and excellent performance.
- Digital display menu that is easy to change settings.
- Set magnification and automatic conversion into target value to meet with customer needs.
- Achieve slow acceleration and slow deceleration adjustment.
- Panel operation or external switch control.
- The panel knob will automatically match the highest speed to achieve easy and safe control.
- Stalling protection to protect the motor and speed controller from being damaged due to the stalling.  
(This function can protect stalling-related overload, but cannot protect non-stalling-related overload)
- This speed controller is suitable for 50-60Hz.



### Wiring Diagram



- Buttons on the operation panel to control the motor operation.
  - 1) K1 or K2 switches are not required.
  - 2) Menu settings: Operation control option F-01, select "1" or "4" for button control on the operation panel.

The power of RK variable-speed motor must match the applicable motor power of the speed regulator.

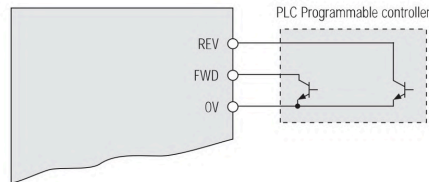
The power supply voltage must be consistent with the power supply voltage of the driver. QF circuit breaker can protect the driver and variable-speed motor in case of short circuit.

- External switches K1 and K2 to control the motor operations.
  - 1) K1 and K2 switches are required.
  - 2) Menu settings: Operation control option F-01, select "2" or "3" for external switch control.

Please check if the power label of the speed regulator is consistent with the power of the motor.

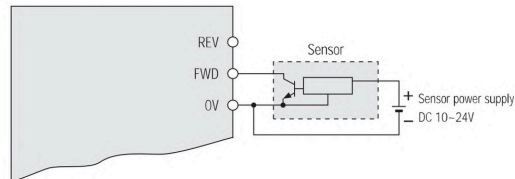
### Current specifications of QF circuit breaker

Supply voltage	Motor power	QF Current specifications
220V	6~200W	2A
220V	200W	3A
110V	6~200W	4A
110V	200W	6A



- FWD and REV use PLC programmable controller to achieve control. PLC output: NPN or drain transistor output.

- Menu settings: Operation control option F-03, select "2" or "3" for external switch control.



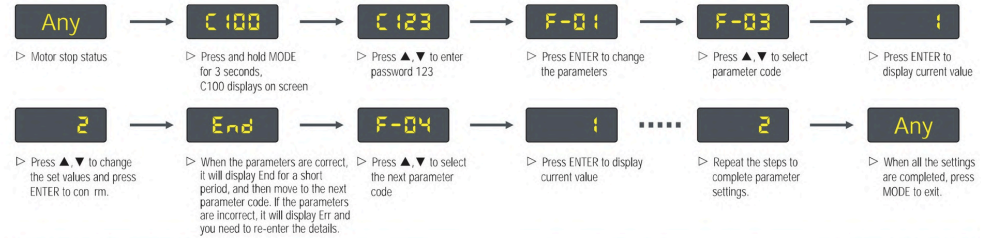
- FWD and REV are controlled by sensors such as proximity switch and photoelectric switch. Switch output: three-wire NPN transistor output

- Menu settings: Operation control option F-03, select "2" or "3" for external switch control.

### Menu of UX Series Speed Controller With Digital Display Panel

- Menu modifications:

Note: To ensure safety, modifications to F-05 and F-29 parameters must be performed when the motor is stopped, otherwise the settings can't be completed and the screen will display Err.



Parameter code	Functions of the parameters	Setting range	Description of the functions	Factory default settings	User settings
F-01	Display content	1. Motor speed settings 2. Magnification speed settings 3. Displays speed feedback value	Magnification speed settings = motor speed value ÷ magnification	1	
F-02	Magnification settings	1.0-999.9	Settings are done according to the display requirements to display the target values.	1.0	
F-03	Operation control methods	1. Button control on the operation panel, memory not available. 2. Control with external switches, STOP key is inactive. 3. Control with external buttons, STOP key is active. 4. Button control on the operation panel, memory available.	Select "1" to control the motor with buttons on the panel; turn off power supply of the speed regulator and power it back on, the speed regulator will memorize the operation conditions prior to the power off, and the motor will be stopped when the power is back on. Select "4" and the speed regulator will memorize the operation conditions prior to the power off, and the motor will keep the status prior to the power off when the power is back on. Make sure safety is ensured when this function is selected. Note: the operating state is not saved under recirculation state.	1	
F-04	Rotation mode	1. Forward and reversal are available. 2. Forward rotation is available, reversal is prohibited. 3. Reversal is available, forward rotation is prohibited.	Motor rotation direction may be restricted to prevent failure of the equipment or accident.	1	
F-05	Rotation direction	1. Negation is not available. 2. Negation is available.	It is easy to change the direction of the motor without changing the motor wiring to match your habit or requirements.	1	
F-06	Speed adjustment method	1. Panel ▲▼ buttons 2. Panel knobs	Press the ▲▼ button to adjust between the lowest and highest speed range, and the speed panel button of the variable-speed motor will match the lowest and highest speed automatically.	1	
F-07	Highest speed	500-3000	The highest speed of the motor may be restricted to prevent speeding, damage or accidents.	1400	
F-08	Lowest speed	90-1000	The lowest speed of the motor may be restricted to prevent inconsistent speed, overheating or overloading caused by low speed.	90	
F-09	Forward starting acceleration time	0.1-10.0 seconds	The longer the time, the slower the motor starts and more time is required. The shorter the time, the faster the motor starts and less time is required.	1.0	
F-10	Stop way of forward	1. Stop by arbitrary deceleration 2. Stop by slow deceleration	If you choose to STOP by arbitrary deceleration, and the motor stops too quickly, you can select STOP by slow deceleration and change the F-11 settings to change the deceleration speed.	1	
F-11	Slow deceleration time of the forward stop	0.1-10.0 seconds	The menu is valid when option 2 is selected from F-10.	1.0	
F-12	Reversal starting acceleration time	0.1-10.0 seconds	The longer the time, the slower the motor starts and more time is required. The shorter the time, the faster the motor starts and less time is required.	1.0	
F-13	Stop way of reversal	1. Stop by arbitrary deceleration 2. Stop by slow deceleration	If you choose to STOP by arbitrary deceleration, and the motor stops too quickly, you can select STOP by slow deceleration and change the F-14 settings to change the deceleration speed.	1	
F-14	Slow deceleration time of the reversal stop	0.1-10.0 seconds	The menu is valid when option 2 is selected from F-13.	1.0	
F-15	Warning	1. Warning is active. 2. Warning is inactive.	Check if the control of stalling warning is active.	1	
F-29	Factory reset	1. Factory reset not required. 2. Factory reset required.		1	
F-30	Program version	Code+version		01.18	
Fault warning Err: 1) overload-related stalling 2) Incorrect wiring connection between the speed regulator and the motor			Troubleshooting method: 1) Fault inspection and troubleshooting 2) Power on again to cancel the warning		