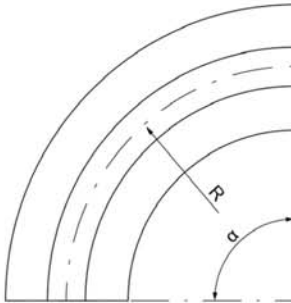




# Conveyer modular belt

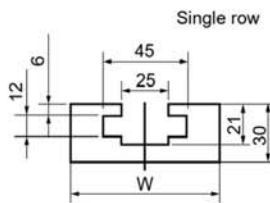
63/83/103/140

Corner track

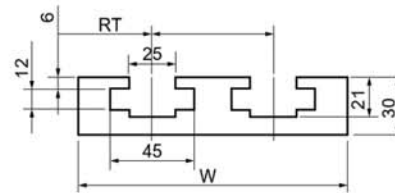


- \* Material: HDPE, Black
- \* Temperature: -30°-90°
- \* Bend rail angle  $\alpha=15^\circ-90^\circ$
- \* Feature: Corner track for the special table top chain, coefficient of friction

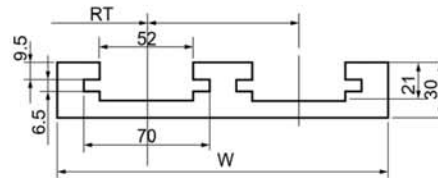
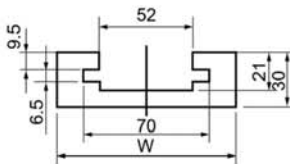
63 Flex chain corner track drawing



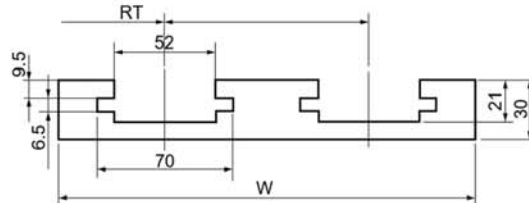
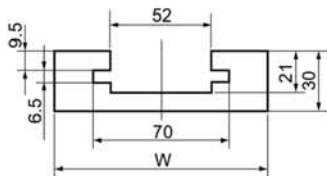
Double rows



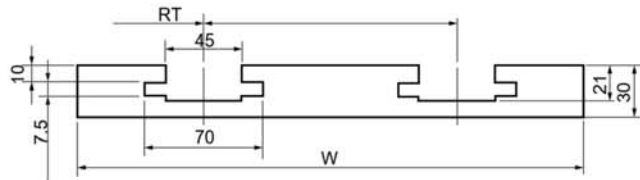
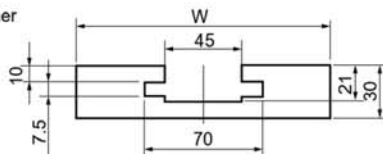
83 Flex chain corner track drawing



103 Flex chain corner track drawing



146 Flex chain corner track drawing

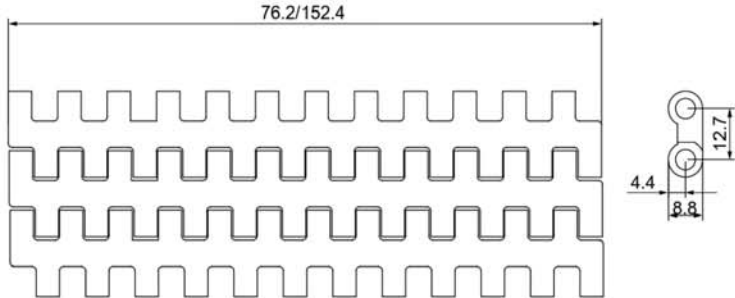


Type	Reference	R	W	T	Material	Color
63-	63-R150-80-1	150	80		HDPE	Black
63-	63-R150-185-2	150	145			
83-	83-R150-100-1	150	100	65		
83-	83-R150-185-2	150	185			
103-	103-R250-110-1	250	110	85		
103-	103-R250-215-2	250	215	105		
140-	140-R250-150-1	250	150			
140-	140-R250-300-2	250	300	150		

## 12.7 Pitch 12.7mm series modular belt

MX100(QNB)

Modular belt

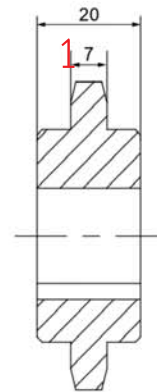
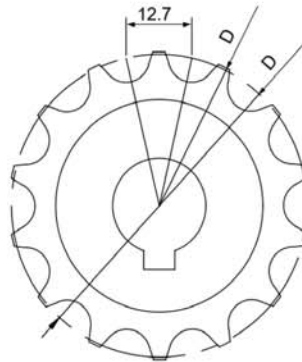


Material	Rod material	Load N/m	Weight Kg/m <sup>2</sup>	W Width (mm)			
	Φ			Single width		Assembly assembly	
(POM)	SUS	15000	8.2	76.2	152.4	/	W=76.2×N
(PP)		7500	6.2	Note: N is an integer multiple increment, the width of the single piece is standard width, Due to the different material shrinkage rate, the actual width of the mesh belt may have an error about 0.1%-0.3%			

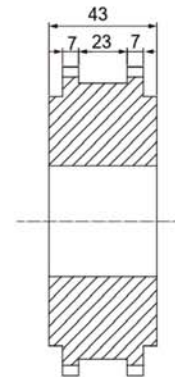
\* If you need non-standard size, please contact us ahead of time, All bases on the real width.

MX100(QNB)

Sprocket



Single row teeth

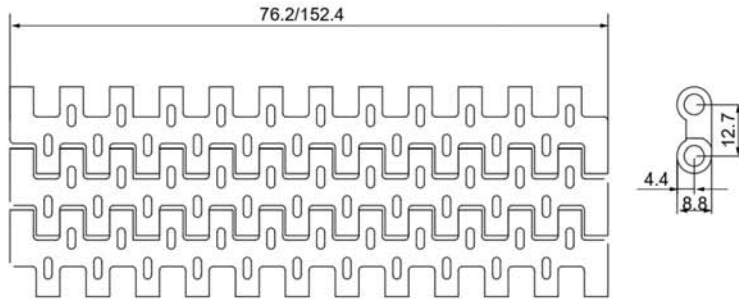


Double row teeth

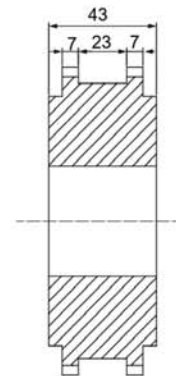
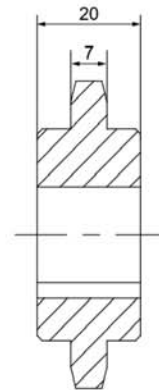
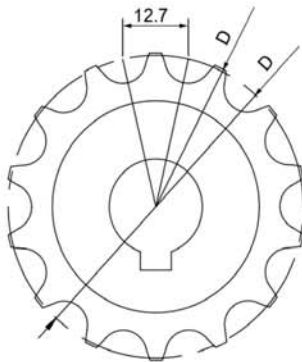
Model	T	D (mm)	D (mm)	(Bore)
MX100-12	12	46.90	47.50	Φ25/30/35
MX100-15	15	58.44	59.17	Φ25/30/35
MX100-24	24	93.08	93.50	Φ25/30/35
MX100-32	32	123.96	124.24	Φ25/30/35



MX110(SNB-M3) Modular belt



MX110(SNB-M3) Sprocket



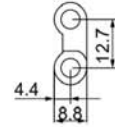
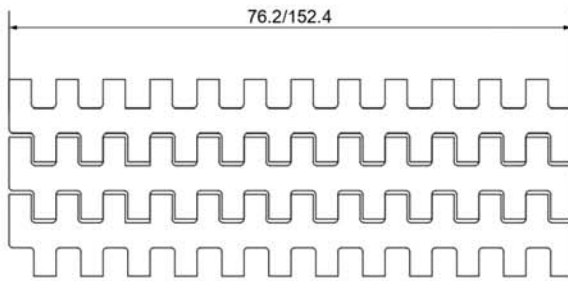
Single row teeth

Double row teeth

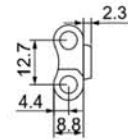
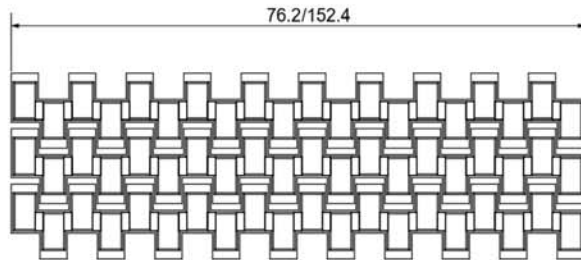
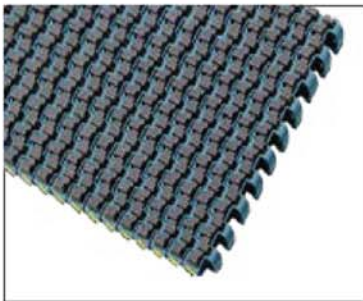
Model	T	D (mm)	D (mm)	(Bore)
MX110-15	15	42.70	42.50	Φ25/30/35
MX110-19	19	78.00	79.00	Φ25/30/35
MX110-28	28	116.11	117.00	Φ25/30/35
MX110-38	38	157.42	158.40	Φ25/30/35



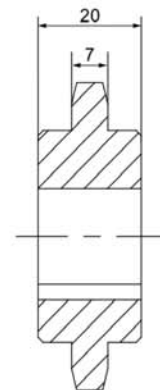
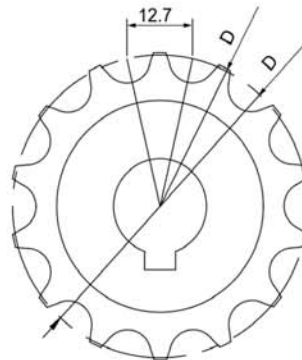
MX120 Modular belt



MX120-2 Modular belt



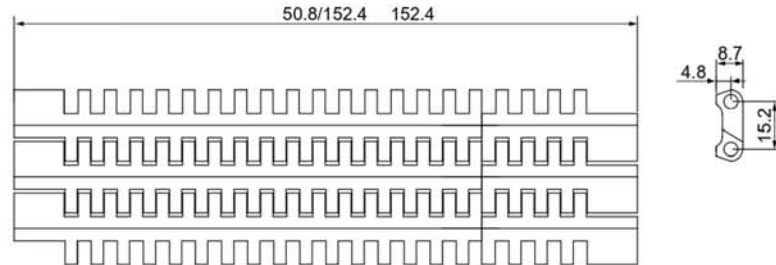
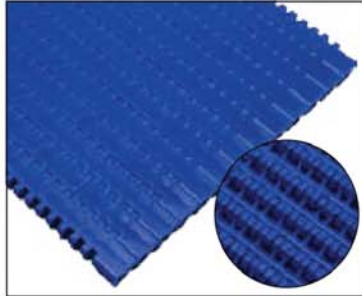
MX120 Sprocket



Model	T	D (mm)	D (mm)	(Bore)
MX120-12	12	41.1	40.1	□ 40/50/60    ○ 25/30/35
MX120-28	28	113.1	112.4	□ 40/50/60    ○ 25/30/35
MX120-38	38	153.8	152.8	□ 40/50/60    ○ 25/30/35

## 15.2Pitch 15.2mm series modular belt

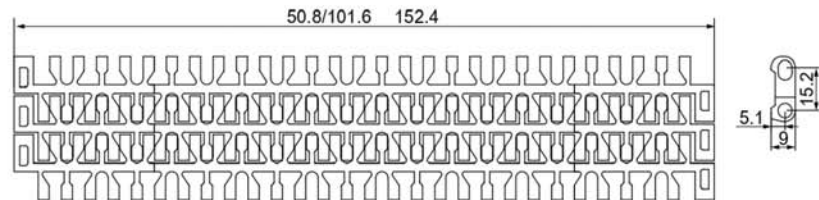
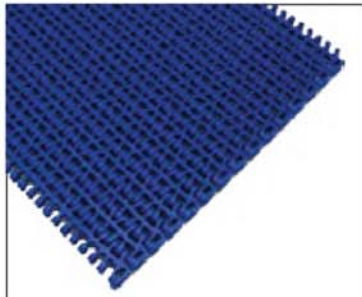
MX200-1(1100) Modular belt



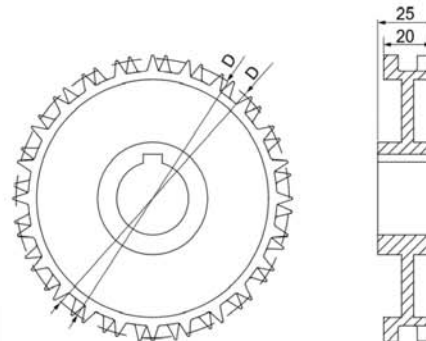
Material	Rod material	Load N/m	Weight Kg/m <sup>2</sup>	W Width (mm)				
	Φ			Single width			Assembly assembly	
(POM)	PP SUS	15000	6.35	50.8	152.4	80	W=203.2	152.4
(PP)		7500	4.4	Note: N is an integer multiple increment, the width of the single piece is standard width, Due to the different material shrinkage rate, the actual width of the mesh belt may have an error about 0.1%-0.3%				

\* If you need non-standard size, please contact us ahead of time, All bases on the real width.

MX200-2(1100) Modular belt



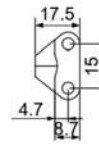
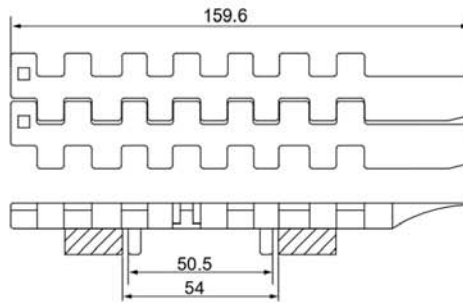
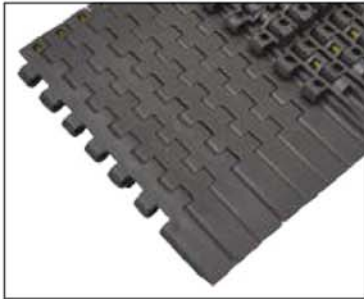
MX200 Sprocket



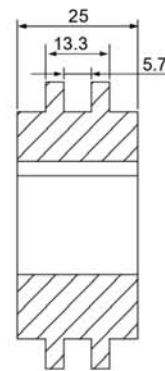
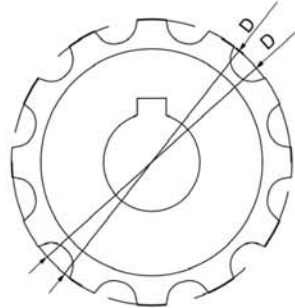
Model	T	D (mm)	D (mm)	(Bore)	
MX200-16	16	79.0	79.0	□ 40/50/60	○ 25/30/35
MX200-24	24	116.5	118.2	□ 40/50/60	○ 25/30/35
MX200-32	32	155.0	157.7	□ 40/50/60	○ 25/30/35



MX210-DTS Modular belt



MX210 Sprocket

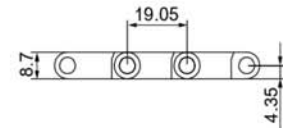
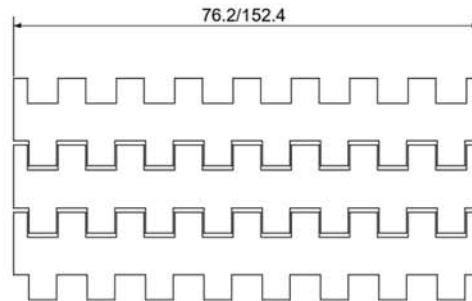
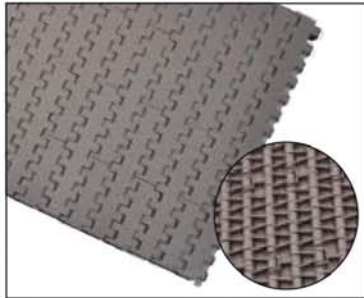


Model	T	D (mm)	D (mm)	(Bore)
MX210-12T	12	57.96	58.2	Φ20/30
MX210-16T	16	76.89	77.7	Φ20/30/35
MX210-24T	24	114.9	115.5	Φ30/35/40
MX210-32T	32	153.03	154.8	Φ30/35/40



## 19.05 Pitch 19.05mm series modular belt

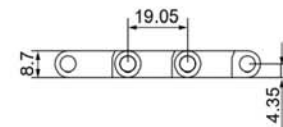
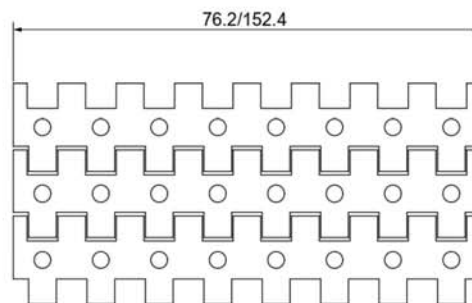
MX300-1(5935) Modular belt



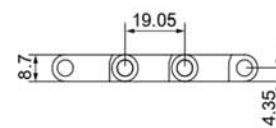
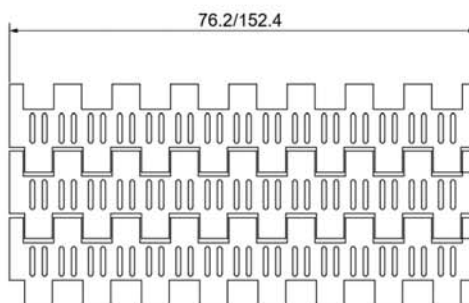
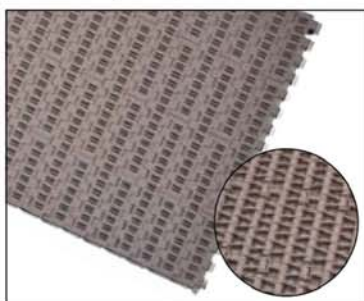
Material	Rod material	Load N/m	Weight Kg/m <sup>2</sup>	W Width (mm)		
	Φ			Single width		Assembly assembly
(POM)	PP SUS	13000	6.72	76.2	152.4	W=76.2×N
(PP)		7000	5.3	Note: N is an integer multiple increment, the width of the single piece is standard width, Due to the different material shrinkage rate, the actual width of the mesh belt may have an error about 0.1%-0.3%		

\* If you need non-standard size, please contact us ahead of time, All bases on the real width.

MX300-2(5935) Modular belt

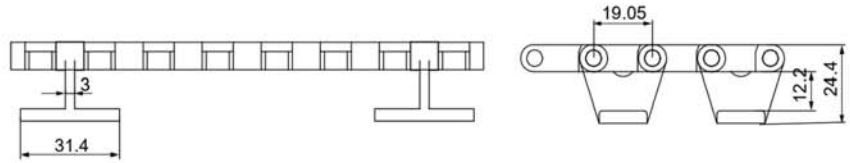


MX300-3(5935) Modular belt

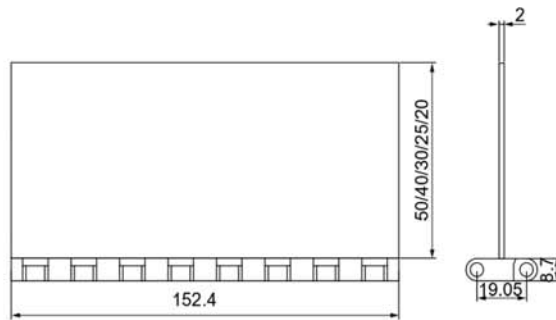
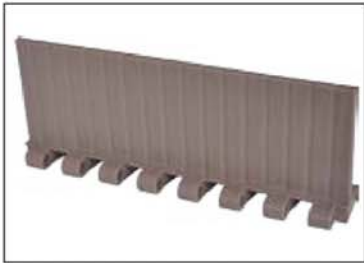




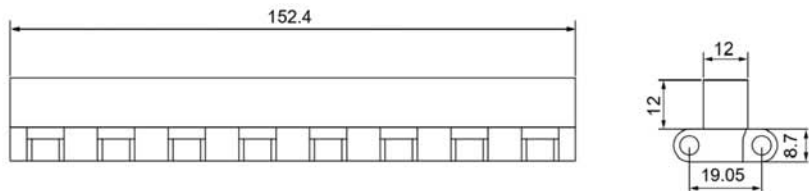
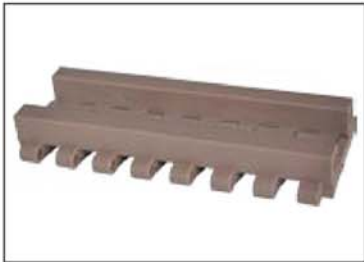
MX3 Modular belt with hook



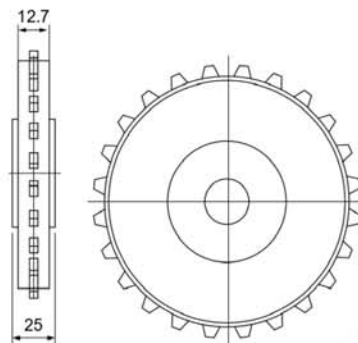
M> Modular belt baffle



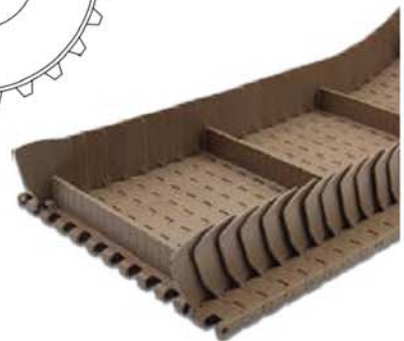
MX300 D D type strengthen baffle



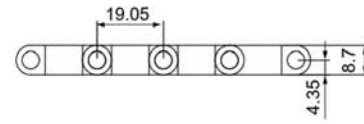
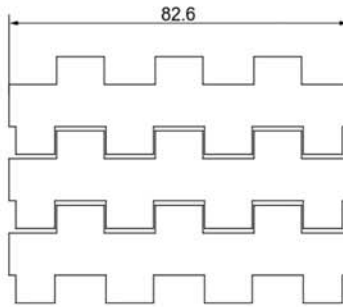
MX300 Sprocket



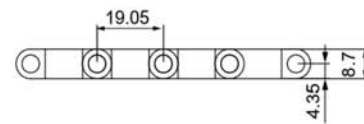
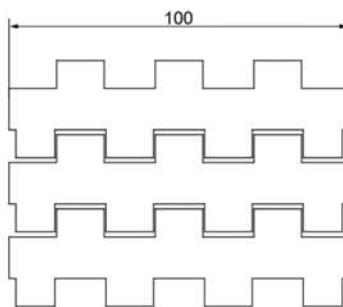
Model	T	D (mm)	D (mm)	(Bore)
MX300-10T	10	61.6	63.9	20/25
MX300-16T	16	97.6	99.9	20/25/30
MX300-20T	20	121.8	124.2	20/25/30/35
MX300-25T	25	152.0	154.7	20/25/30/35/40



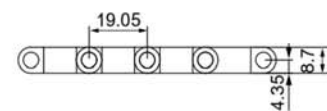
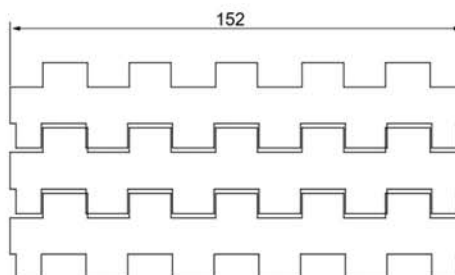
MX300-W82.6 Modular belt



MX300-W100 Modular belt

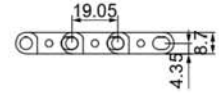
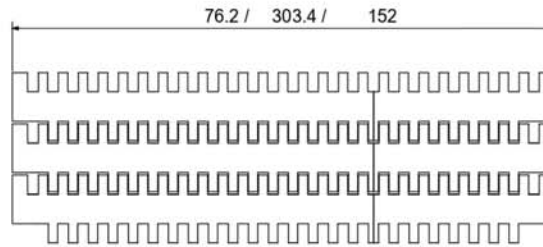


MX300-W152 Modular belt



MX310-1

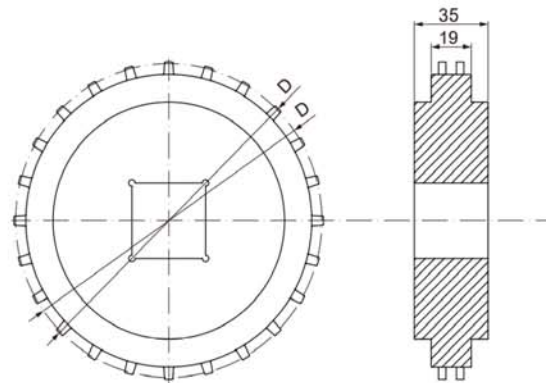
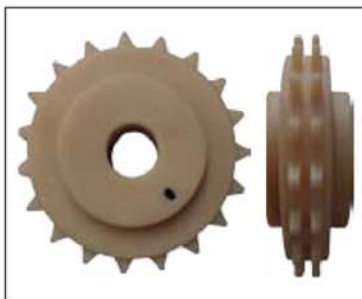
Modular belt (Popular in tobacco industry)



Material	Rod material	Load N/m	Weight Kg/m <sup>2</sup>	W Width (mm)			
	φ			Single width			Assembly assembly
(POM)	PP SUS	29000	9.00	76	303.4	152	W=76.2×N
(PP)		16000	6.00	Note: N is an integer multiple increment, the width of the single piece is standard width, Due to the different material shrinkage rate, the actual width of the mesh belt may have an error about 0.1%-0.3%			

\* If you need non-standard size, please contact us ahead of time, All bases on the real width.

MX310 Sprocket

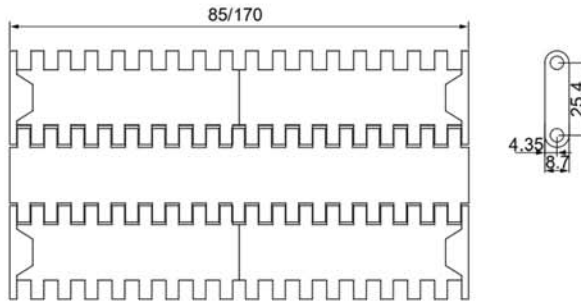
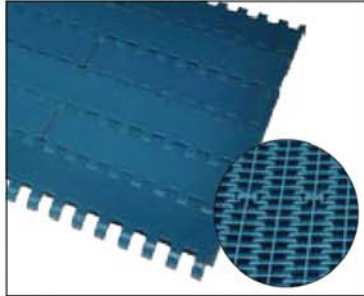


Model	T	D (mm)	D (mm)	(Bore)
MX310-13	13	76.7	79	Φ25/30/35



## 25.4Pitch 25.4mm series modular belt

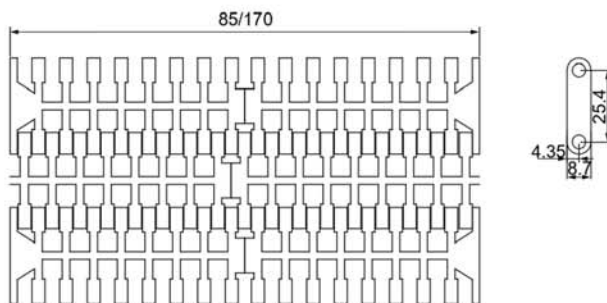
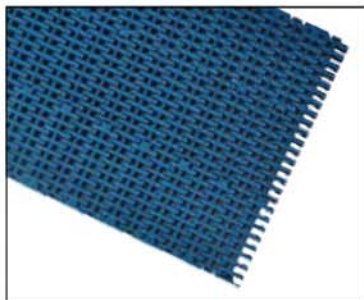
MX400-1 Modular belt



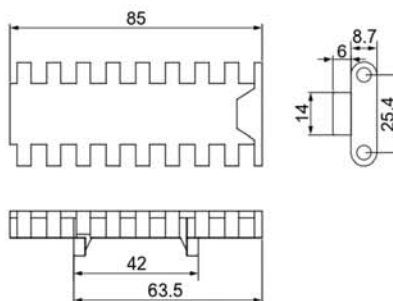
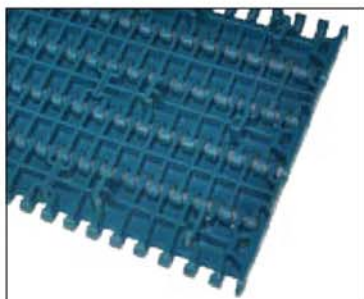
Material	Rod material	Load N/m	Weight Kg/m <sup>2</sup>	W Width (mm)		
	Φ			Single width		Assembly assembly
(POM)	PP SUS	22000	6.5	85	170	W=85×N
(PP)		11000	4.6	Note: N is an integer multiple increment, the width of the single piece is standard width, Due to the different material shrinkage rate, the actual width of the mesh belt may have an error about 0.1%-0.3%		

\* If you need non-standard size, please contact us ahead of time, All bases on the real width.

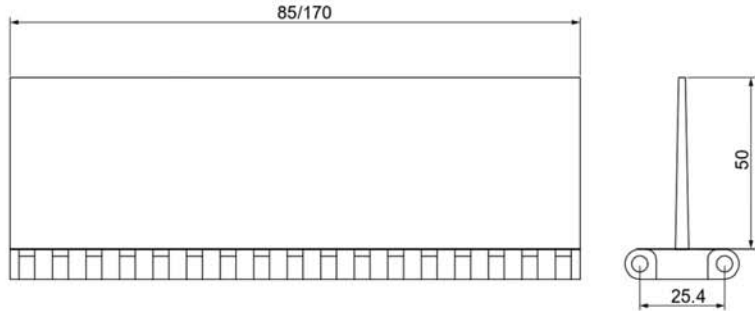
MX400-2 Modular belt



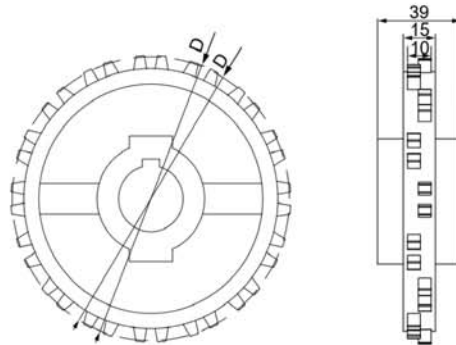
MX400-Modular belt



MX400-DBaffle

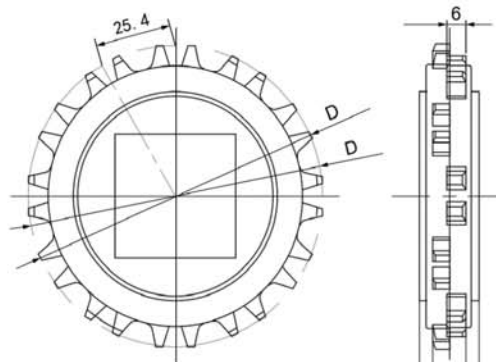


MX400 Molded sprocket



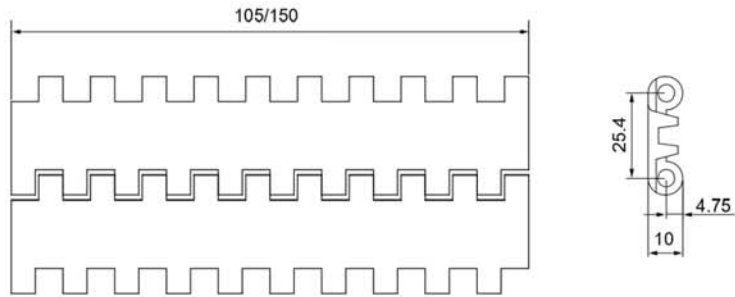
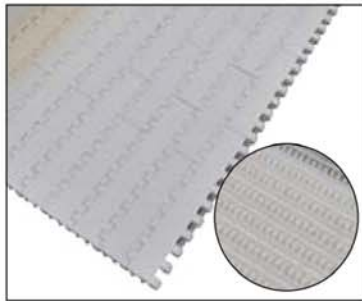
Model	T	D (mm)	D (mm)	(Bore)	
MX400-16	16	130.2	130.6	□ 40/50	○ 25/30/35

MX400 Machined sprocket



Model	T	D (mm)	D (mm)	(Bore)	
MX400-12	12	98.1	96.5	□ 40/50	○ 25/30
MX400-16	16	130.2	130.6	□ 40/50	○ 25/30
MX400-18	18	146.3	146.8	□ 40/50	○ 25/30
MX400-20	20	162.4	163.1	□ 40/50	○ 25/30

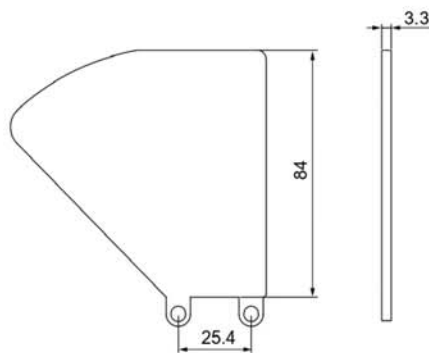
MX410 Modular belt



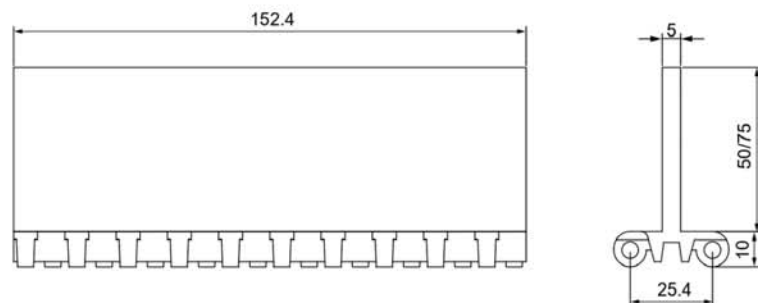
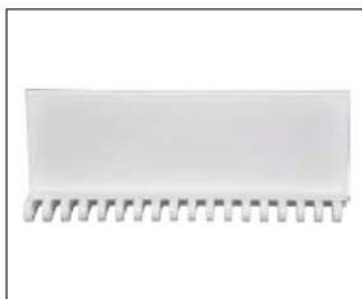
Material	Rod material	Load N/m	Weight Kg/m <sup>2</sup>	W Width (mm)		
	Φ			Single width		Assembly assembly
(POM)	PP SUS	17200	6.5	105	150	W=50×N
(PP)		10000	4.6	<small>Note: N is an integer multiple increment, the width of the single piece is standard width, Due to the different material shrinkage rate, the actual width of the mesh belt may have an error about 0.1%-0.3%</small>		

\* If you need non-standard size, please contact us ahead of time, All bases on the real width.

MX410 Side baffle

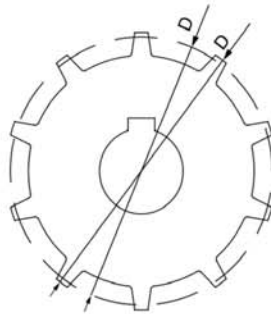


MX410 Baffle



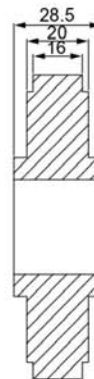
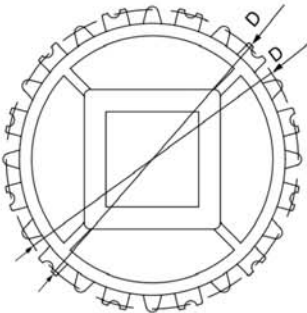


MX410 Machined sprocket



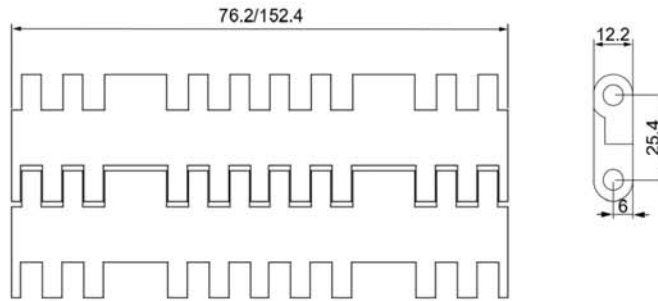
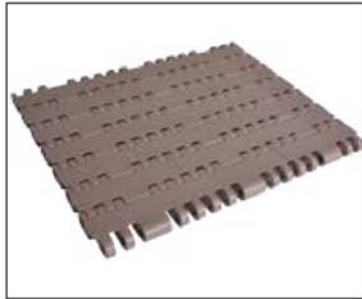
Model	T	D (mm)	D (mm)	(Bore)
MX410-10	10	79.5	80.5	Φ25/30/35
MX410-12	12	96	97	Φ25/30/35
MX410-15	15	121	122	Φ25/30/35

MX410 Molded sprocket



Model	T	D (mm)	D (mm)	(Bore)
MX410-12T	12	96	97	□ 40×40
MX410-15T	15	121	122	□ 40×40

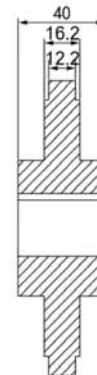
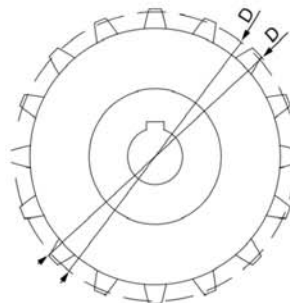
MX420 Modular belt (7705)



Material	Rod material	Load N/m	Weight Kg/m <sup>2</sup>	W Width (mm)		
	Φ			Single width		Assembly assembly
(POM)	PP SUS	43000	13.4	76.2	152.4	W=76.2×N
(PP)		16000	8.6	Note: N is an integer multiple increment, the width of the single piece is standard width, Due to the different material shrinkage rate, the actual width of the mesh belt may have an error about 0.1%-0.3%		

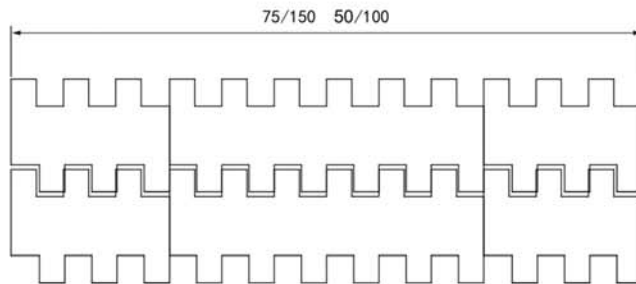
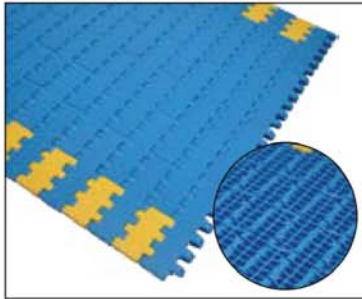
\* If you need non-standard size, please contact us ahead of time, All bases on the real width.

MX420 Machined sprocket



Model	T	D (mm)	D (mm)	(Bore)
MX420-14T	14	114.1	114.5	20/25/30/35
MX420-16T	16	130.2	130.2	20/25/30/35
MX420-18T	18	146.3	146.9	20/25/30/35
MX420-21T	21	170.4	170.7	20/25/30/35

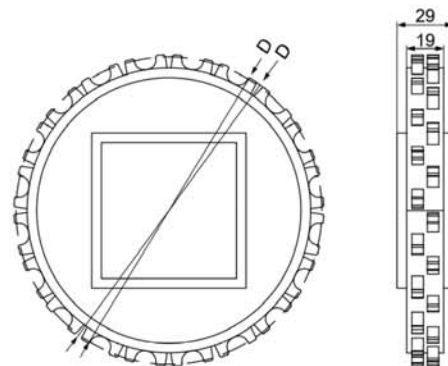
MX430 Modular belt



Material	Rod material	Load N/m	Weight Kg/m <sup>2</sup>	W Width (mm)			
	Φ			Single width		Assembly assembly	
(POM)	PP SUS	30000	10.0	75	/	150	W=75×N
(PP)		16000	6.5	Note: N is an integer multiple increment, the width of the single piece is standard width, Due to the different material shrinkage rate, the actual width of the mesh belt may have an error about 0.1%-0.3%			

\* If you need non-standard size, please contact us ahead of time, All bases on the real width.

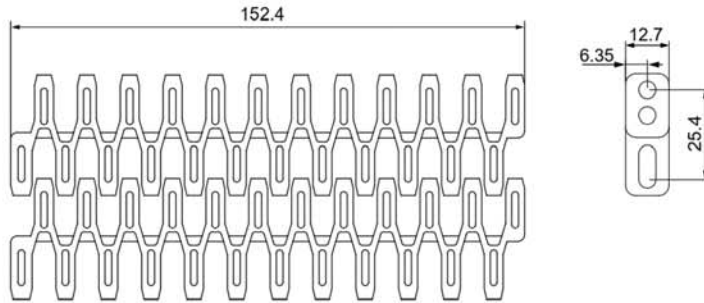
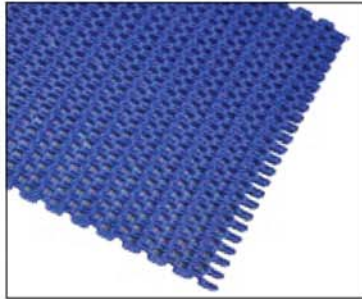
MX430 Molded sprocket



Model	T	D (mm)	D <sub>p</sub> (mm)	(Bore)
MX430-12T	12	98.14	100.4	□ 38.1/40/50
MX430-18T	18	146.27	150.65	□ 38.1/40/50



MX440 Modular belt

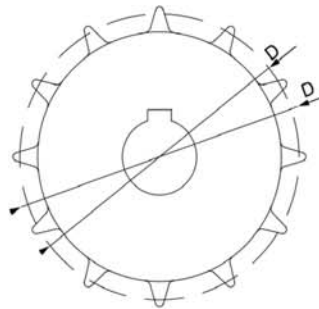


Material	Rod material	Load N/m	Weight Kg/m <sup>2</sup>	W Width (mm)			
	Φ			Single width		Assembly assembly	
(POM)	PP SUS	23500	6.4	/	152.4	/	W=76.2×N
(PP)		15000	4.5	Note: N is an integer multiple increment, the width of the single piece is standard width, Due to the different material shrinkage rate, the actual width of the mesh belt may have an error about 0.1%-0.3%			

\* If you need non-standard size, please contact us ahead of time, All bases on the real width.

Note: The minimum radius of the modular belt is 2.2 times the width of using

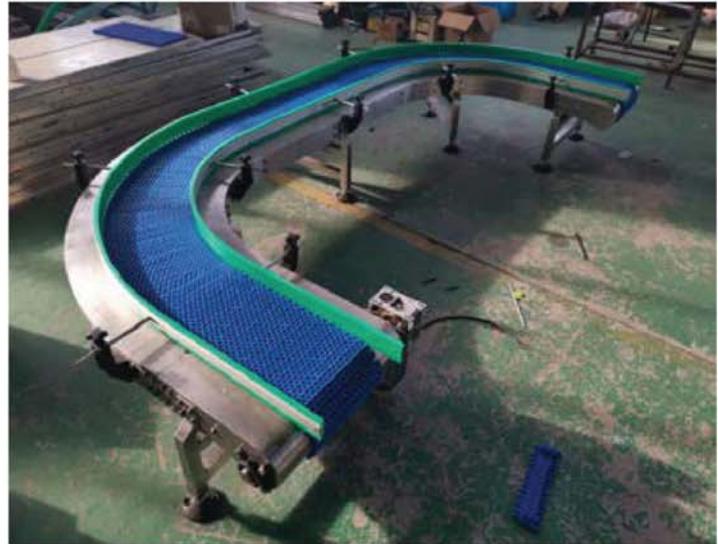
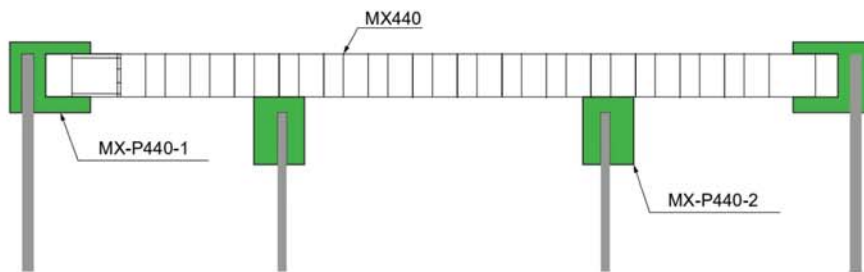
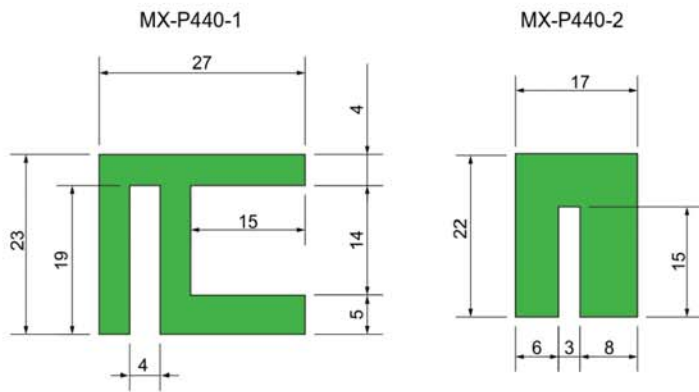
MX440Sprocket



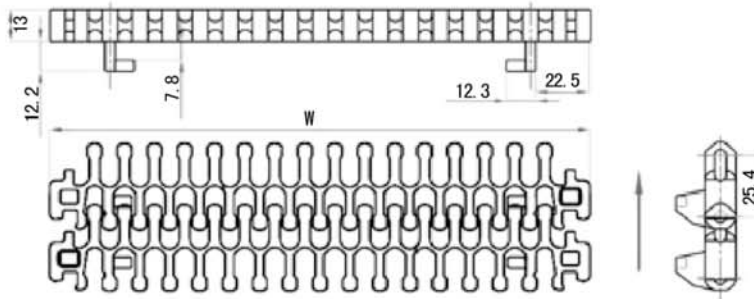
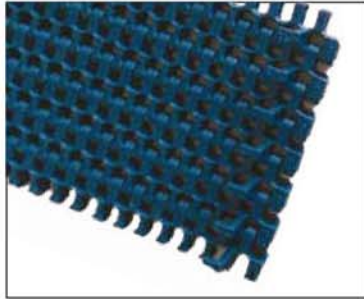
Model	T	D (mm)	D (mm)	(Bore)
MX440-12T	12	98.1	98.8	20/30/35
MX440-15T	15	122.2	123.5	30/35/40
MX440-19T	19	154.3	156.2	35/40/45/50
MX440-28T	28	226.8	229.4	35/40/45/50/60

MX440

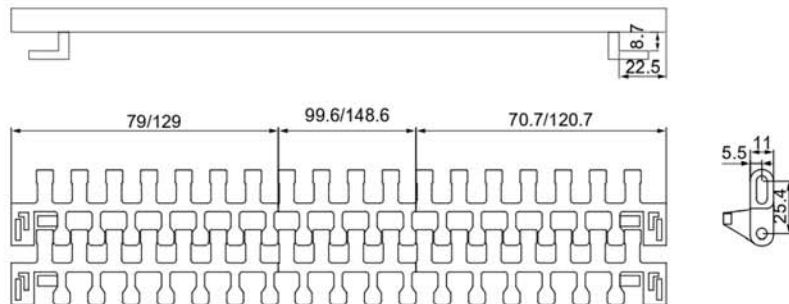
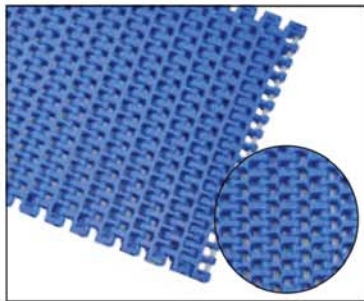
Special



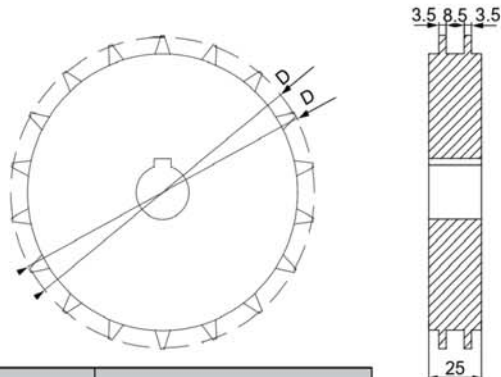
MX450-1 Inner hook modular belt



MX450-2 Outer hook modular belt

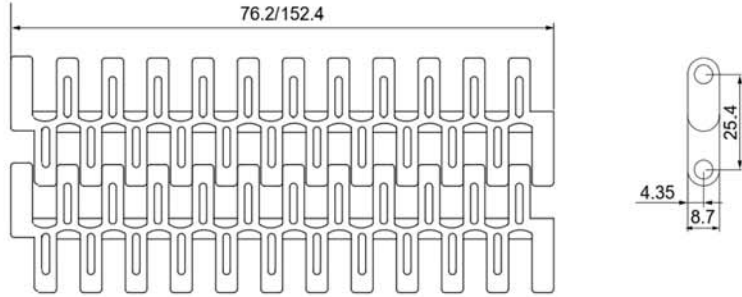
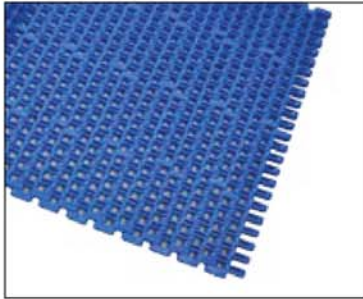


MX450 Machined sprocket



Model	T	D (mm)	D (mm)	(Bore)
MX450-12T	12	98.1	98.8	20/30/35
MX450-15T	15	122.2	123.5	30/35/40
MX450-19T	19	154.3	156.2	35/40/45
MX450-28T	28	226.8	229.4	35/40/45

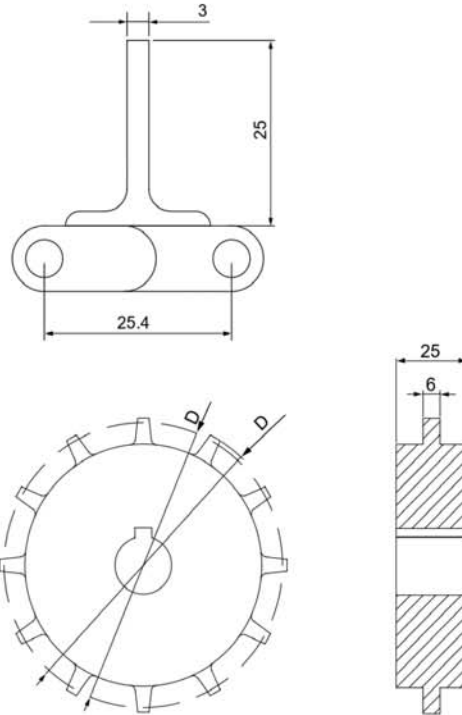
MX460 Modular belt



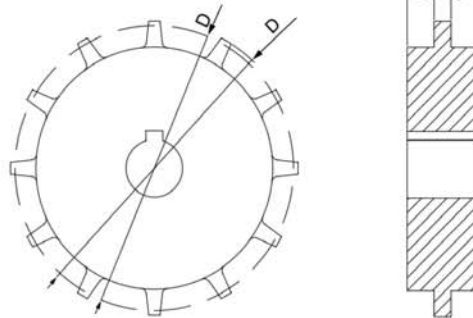
Material	Rod material	Load N/m	Weight Kg/m <sup>2</sup>	W Width (mm)	
	Φ			Single width	Assembly assembly
(POM)	PP SUS	23500	6.4	/ 152.4 /	W=76.2×N
(PP)		15000	4.5	Note: N is an integer multiple increment, the width of the single piece is standard width, Due to the different material shrinkage rate, the actual width of the mesh belt may have an error about 0.1%-0.3%	

\* If you need non-standard size, please contact us ahead of time, All bases on the real width.

MX460 Baffle



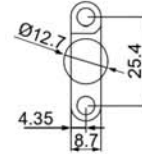
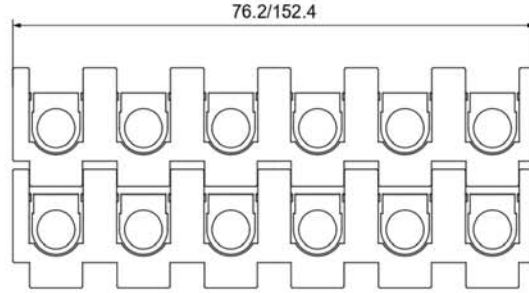
MX460 Sprocket



Model	T	D (mm)	D (mm)	(Bore)
MX460-12T	12	98.1	103.2	20/25/30
MX460-18T	18	146.3	152.7	25/30/35
MX460-19T	19	154.3	160.9	25/30/35
MX460-20T	20	162.4	169.1	25/30/35/40



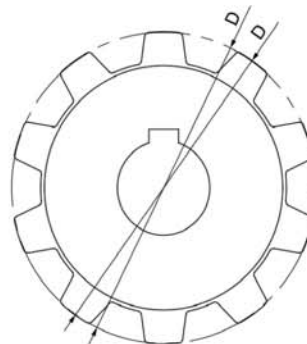
MX470 Modular belt



Material	Rod material	Load N/m	Weight Kg/m <sup>2</sup>	W Width (mm)			
	Φ			Single width		Assembly assembly	
(POM)	PP SUS	16000	9.2	76.2	/	152.4	W=76.2×N
(PP)		14000	6.0	Note: N is an integer multiple increment, the width of the single piece is standard width, Due to the different material shrinkage rate, the actual width of the mesh belt may have an error about 0.1%-0.3%			

\* If you need non-standard size, please contact us ahead of time, All bases on the real width.

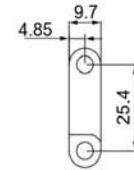
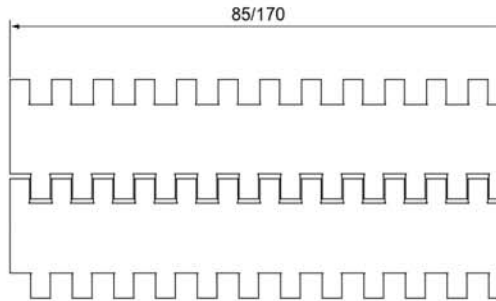
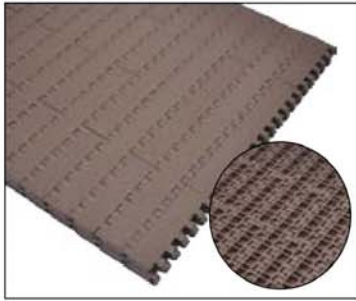
MX470 Sprocket



Model	T	D (mm)	D (mm)	(Bore)
MX470-10T	10	82.2	82.4	20/25/30
MX470-12T	12	98.1	98.3	25/30/35
MX470-14T	14	114.15	115.3	25/30/35
MX470-16T	16	130.2	130.4	25/30/35/40
MX470-18T	18	146.3	146.5	25/30/35/40



MX480-1平板型网带 Modular belt

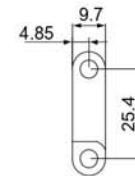
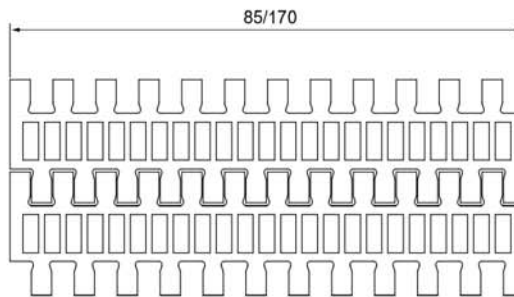
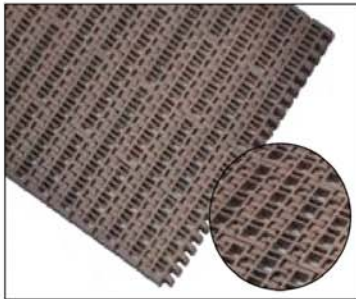


网带材质 Material	销轴材质 Rod material	工作载荷 Load N/m	网链重量 Weight Kg/m <sup>2</sup>	W 宽度 Width (mm)			
	销轴直径 Φ			单片宽度 Single width		组合拼装 Assembly assembly	
聚甲醛 (POM)	PP或不锈钢 SUS	21600	7.6	85	170	定宽83.8	W=85×N
聚丙烯 (PP)		12000	4.9	注: N为整数倍递增; 单片宽度为标准宽度, 由于材质收缩率不同, 网带实际宽度会有0.1%~0.3%误差。 Note: N is an integer multiple increment, the width of the single piece is standard width, Due to the different material shrinkage rate, the actual width of the mesh belt may have an error about 0.1%-0.3%			

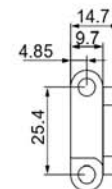
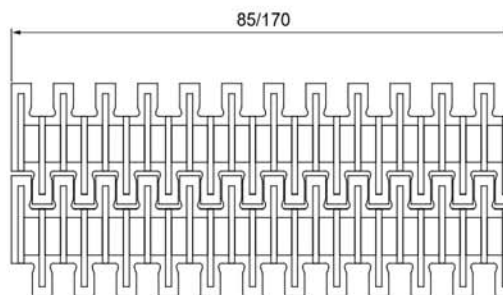
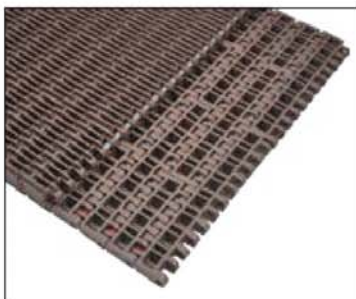
\* 若要非标尺寸可提前联系我司, 以实际拼装为准。

If you need non-standard size, please contact us ahead of time, All bases on the real width.

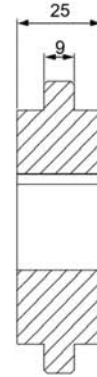
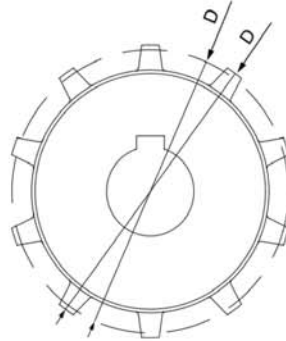
MX480-2平格型网带 Modular belt



MX480-3突肋型网带 Modular belt



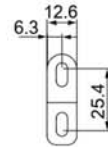
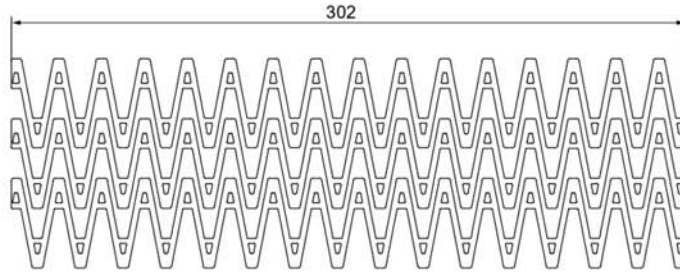
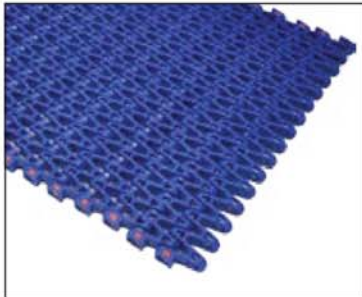
MX480 Sprocket



Model	T	D (mm)	D (mm)	(Bore)
MX480-10T	10	82.2	81.3	20/25
MX480-16T	16	130.2	130.1	25/30/35
MX480-18T	18	146.27	147.2	25/30/35
MX480-21T	21	170.42	171.6	25/30/35/40

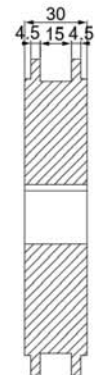
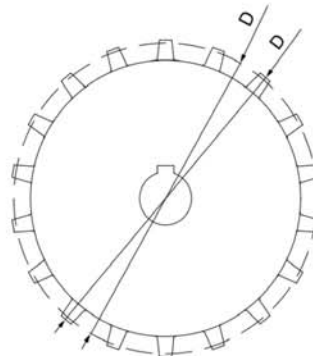
MX490

Modular belt (for spiral conveyor)



Note: The minimum radius of the modular belt is 2.0 times the width of using

MX490 Sprocket

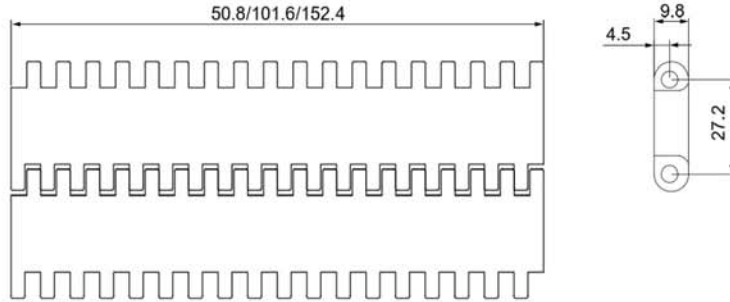
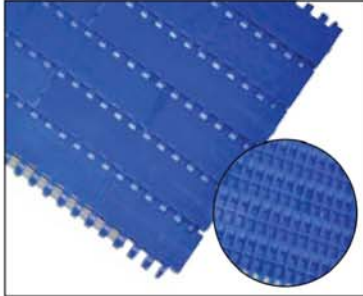


Model	T	D (mm)	D (mm)	(Bore)
MX490-12	12	98.5	99	Φ25/30/35



**27.2Pitch 27.2mm series modular belt**

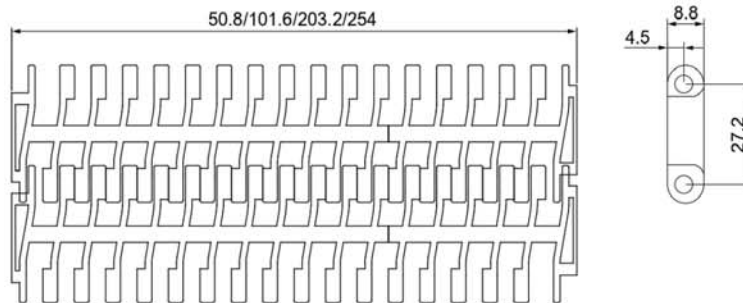
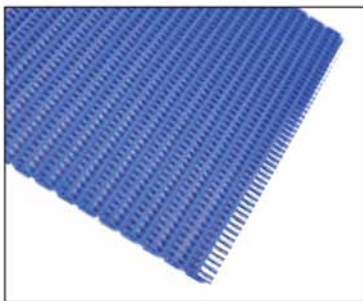
MX500-1(900) Modular belt



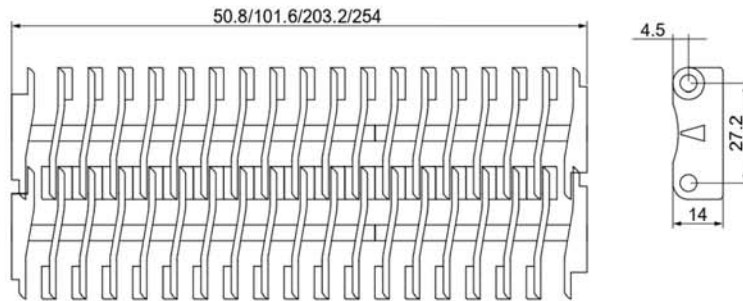
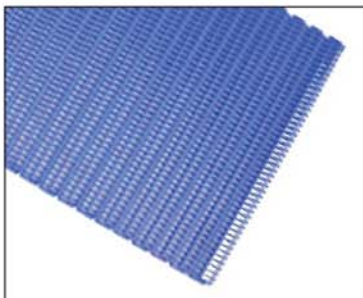
Material	Rod material	Load N/m	Weight Kg/m <sup>2</sup>	W Width (mm)			
	Φ			Single width		Assembly assembly	
(POM)	PP SUS	17000	7.3	50.8	101.6	152.4	W=152.4×N
(PP)		12000	4.7	Note: N is an integer multiple increment, the width of the single piece is standard width, Due to the different material shrinkage rate, the actual width of the mesh belt may have an error about 0.1%-0.3%			

\* If you need non-standard size, please contact us ahead of time, All bases on the real width.

MX500-2(900) Modular belt

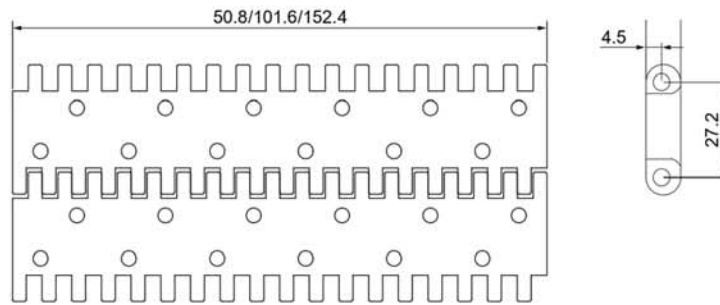
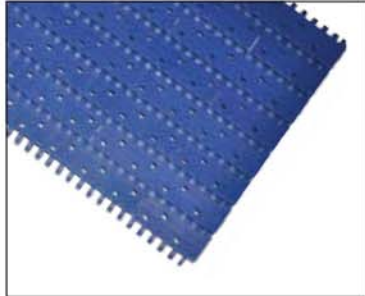


MX500-3(900) Modular belt

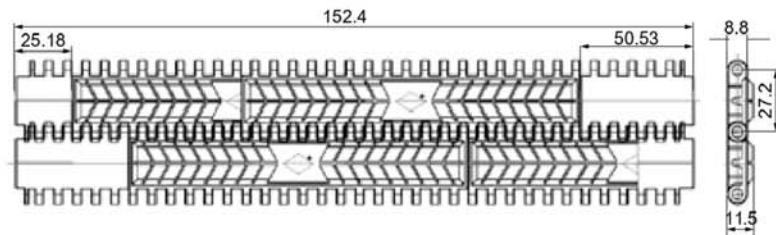
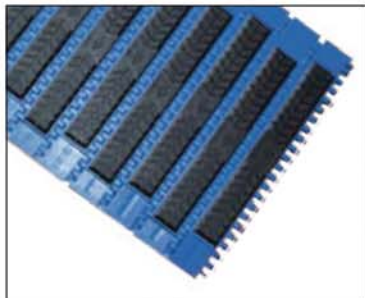




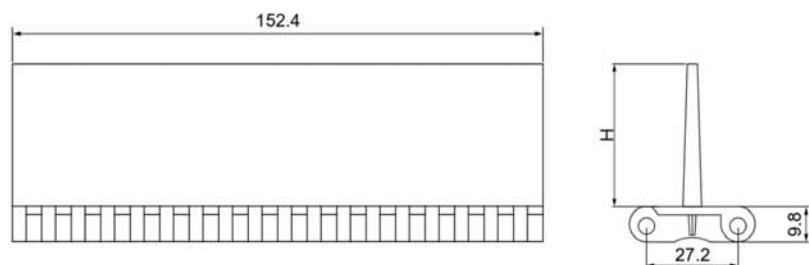
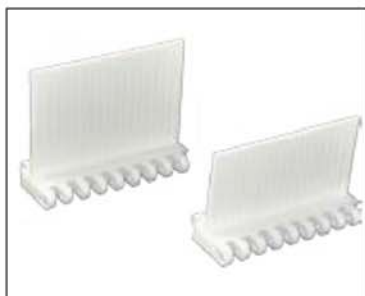
MX500-4(900) Modular belt



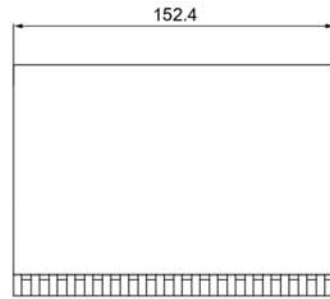
MX500-5 Modular belt



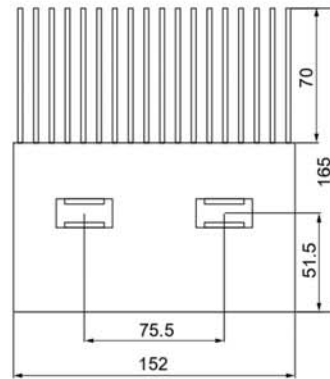
MX50 Baffle



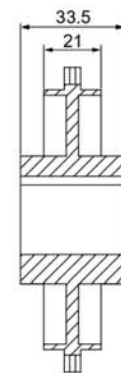
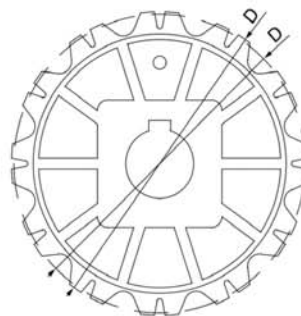
MX500 Hooked baffle



MX500 Comb belt



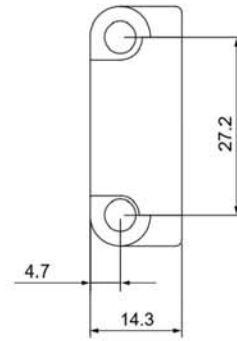
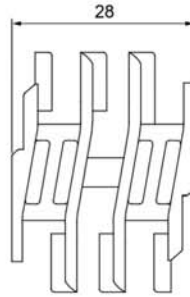
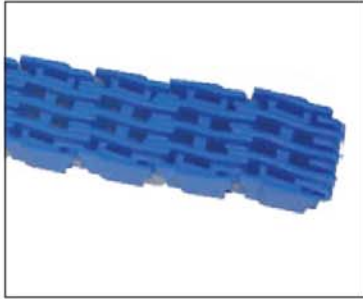
MX500 Molded sprocket



Model	T	D (mm)	D (mm)	(Bore)	
MX500-12T	12	104	109	□ 40/60	○ 25/30
MX500-18T	18	155	160	□ 40/60	○ 25/30/35
MX500-20T	20	165	178	□ 40/60	○ 25/30/35

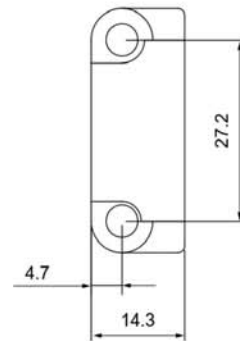
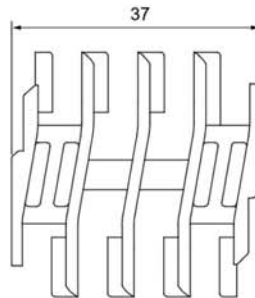
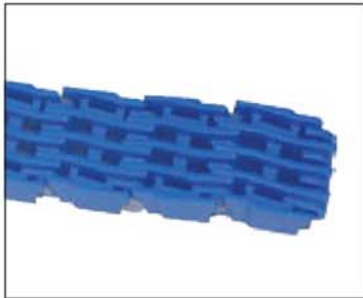
MX510-W28(900)

Modular belt



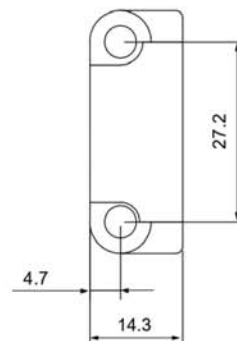
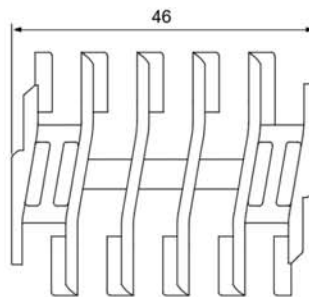
MX510-W37(900)

Modular belt

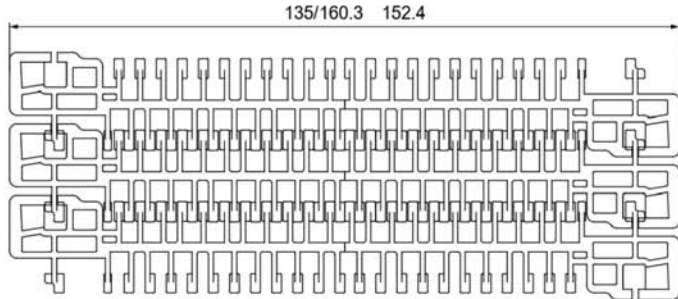
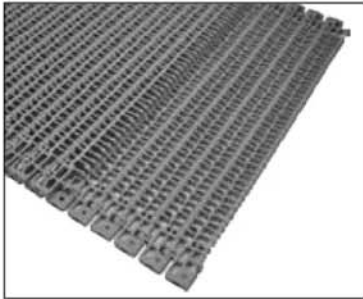


MX510-W46(900)

Modular belt



MX530 Modular belt



Material	Rod material	Load N/m	Weight Kg/m <sup>2</sup>	W Width (mm)			
	Φ			Single width		Assembly assembly	
(POM)	PP SUS	22000	5.7	135	152.4	160.3	W=295.3 152.4
(PP)		12000	3.8	Note: N is an integer multiple increment, the width of the single piece is standard width, Due to the different material shrinkage rate, the actual width of the mesh belt may have an error about 0.1%-0.3%			

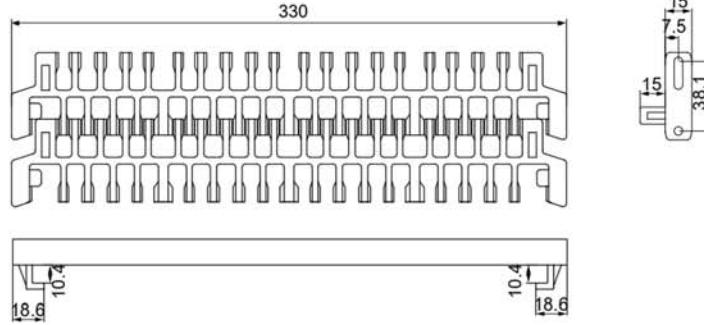
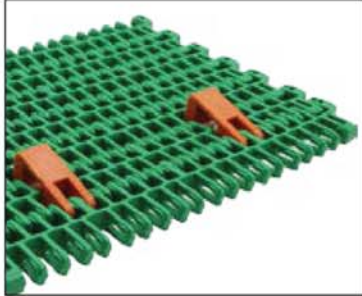
\* Non-standard w=295.3+25.4×N, If you need non-standard size, please contact us ahead of time, All bases on the real width.





### 38.1Pitch 38.1mm series modular belt

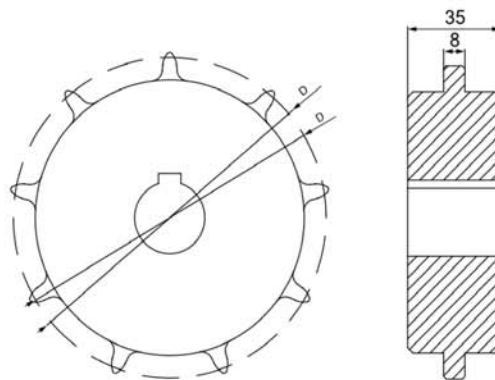
MX600 Modular belt



Material	Rod material	Load N/m	Weight Kg/m <sup>2</sup>	W Width (mm)			
	Φ			Single width		Assembly assembly	
(POM)	PP SUS	17000	13.7	330	/	/	W=103×N
(PP)		8100	8.7	Note: N is an integer multiple increment, the width of the single piece is standard width, Due to the different material shrinkage rate, the actual width of the mesh belt may have an error about 0.1%-0.3%			

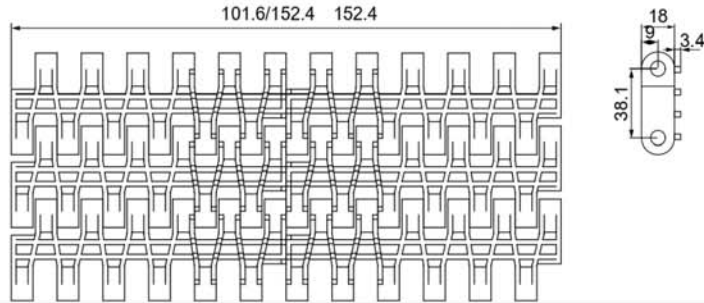
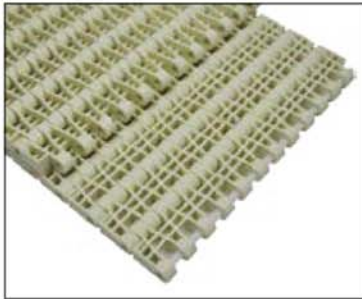
\* If you need non-standard size, please contact us ahead of time, All bases on the real width.

MX600 Machined sprocket



Model	T	D (mm)	D (mm)	(Bore)
MX600-8T	8	99.6	102	20/25/30
MX600-9T	9	111.4	116	25/30/35
MX600-10T	10	123.3	128	30/35/40
MX600-12T	12	147.2	152	30/35/40

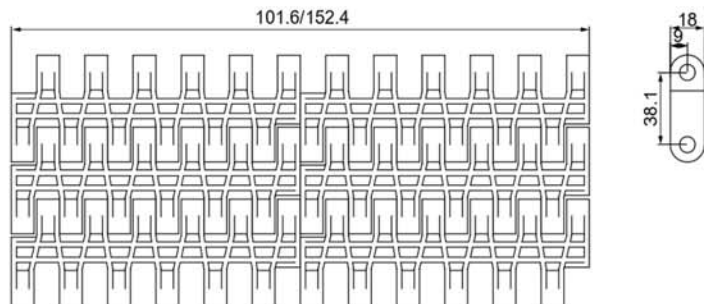
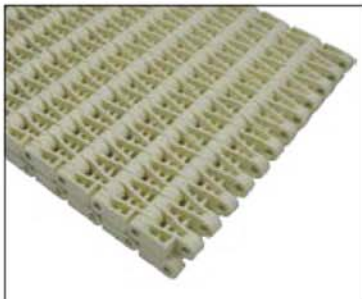
MX610-1 Modular belt



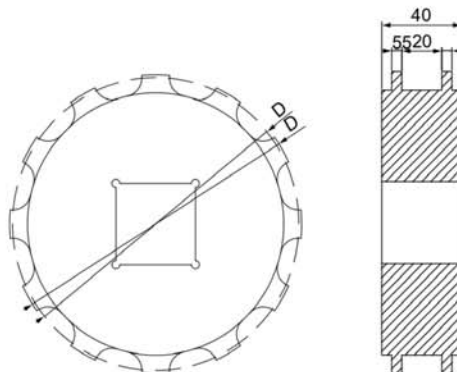
Material	Rod material	Load N/m	Weight Kg/m <sup>2</sup>	W Width (mm)			
	Φ			Single width		Assembly assembly	
(POM)	PP SUS	30000	13.2	101.6	/	152.4	W=254 152.4
(PP)		15000	8.5	Note: N is an integer multiple increment, the width of the single piece is standard width, Due to the different material shrinkage rate, the actual width of the mesh belt may have an error about 0.1%-0.3%			

\* Non-standard w=152.4+25.4×N, If you need non-standard size, please contact us ahead of time, All bases on the real width.

MX610-2 Modular belt



MX610 Sprocket

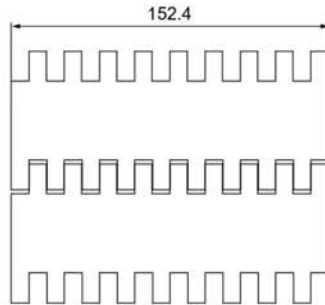
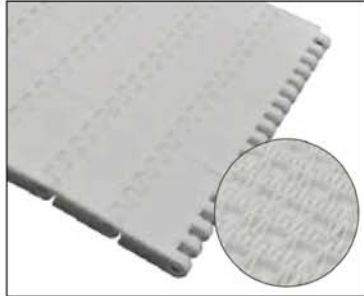


Model	T	D (mm)	D (mm)	(Bore)
MX610-12T	12	147.2	147.7	20/25/30
MX610-15T	15	183.2	183.7	25/30/35
MX610-18T	18	219.4	220	30/35/40
MX610-20T	20	243.5	244	30/35/40

## 50.8Pitch 50.8mm series modular belt

MX700-1(OPB)

Modular belt

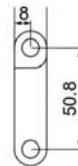
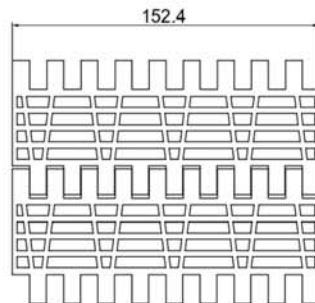


Material	Rod material	Load N/m	Weight Kg/m <sup>2</sup>	W Width (mm)			
	Φ			Single width		Assembly assembly	
(POM)	PP SUS	22000	12	/	152.4	/	W=152.4×N
(PP)		11000	7.8	Note: N is an integer multiple increment, the width of the single piece is standard width, Due to the different material shrinkage rate, the actual width of the mesh belt may have an error about 0.1%-0.3%			

\* If you need non-standard size, please contact us ahead of time, All bases on the real width.

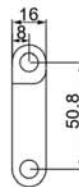
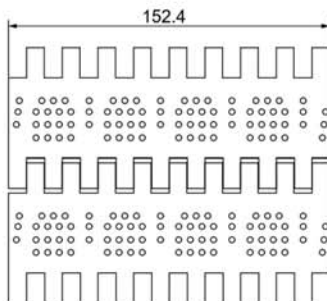
MX700-2(OPB)

Modular belt

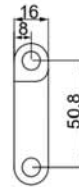
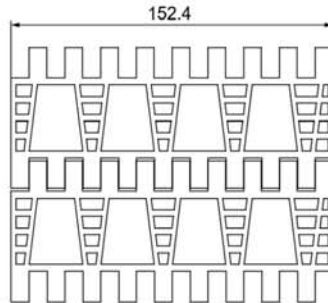
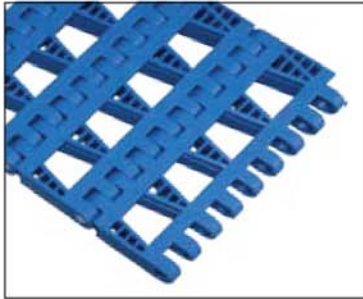


MX700-3(OPB)

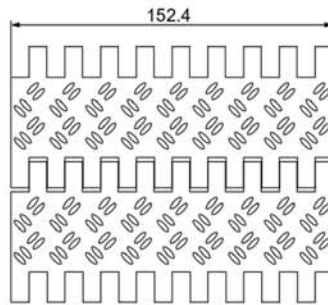
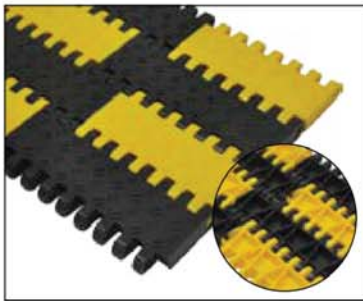
Modular belt



MX700-4(OPB) Modular belt

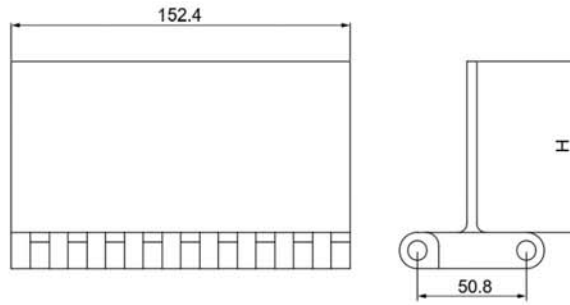
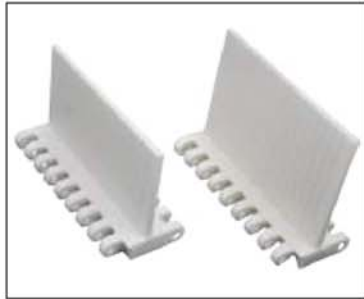


MX700-5 Modular belt(Tire factory)

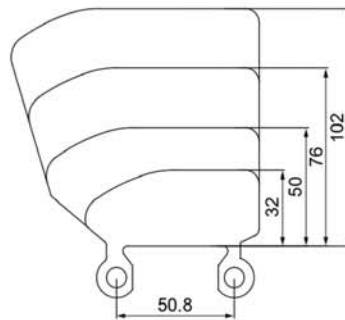




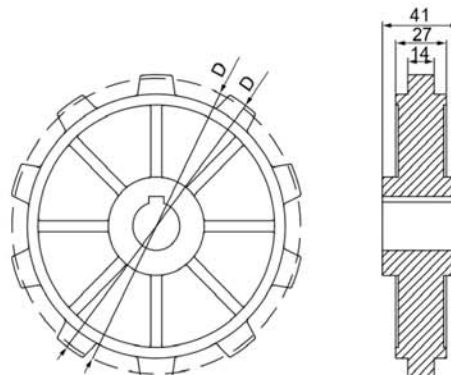
MX700 Baffle



MX700 Side baffle

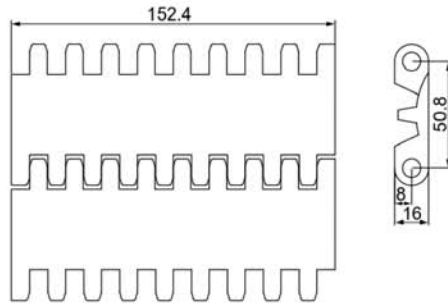
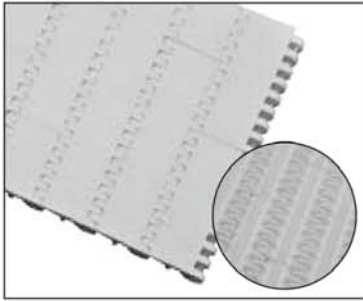


MX700 Sprocket

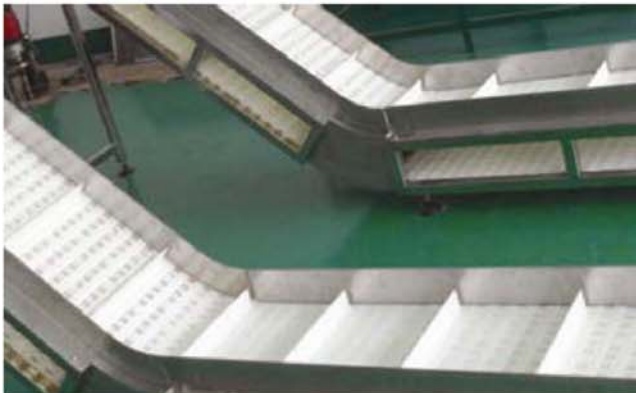
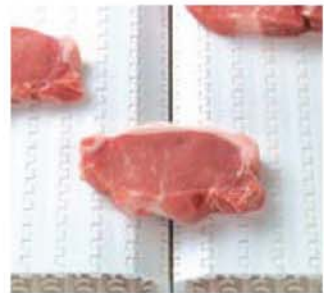
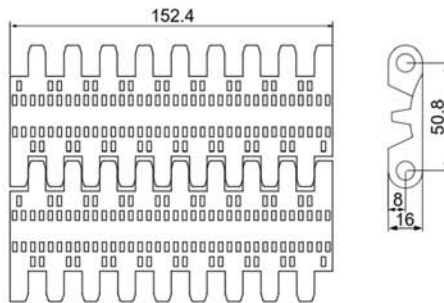
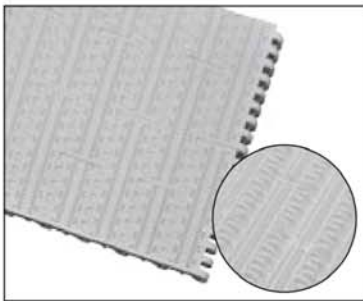


Model	T	D (mm)	D (mm)	(Bore)	
MX700-8T	8	132.7	129	□ 40/60	○ 20/30/35
MX700-10T	10	164.4	161.7	□ 40/60	○ 20/30/35
MX700-12T	12	196.3	193.6	□ 40/60	○ 20/30/35
MX700-14T	14	228.3	225.9	□ 40/60	○ 20/30/35

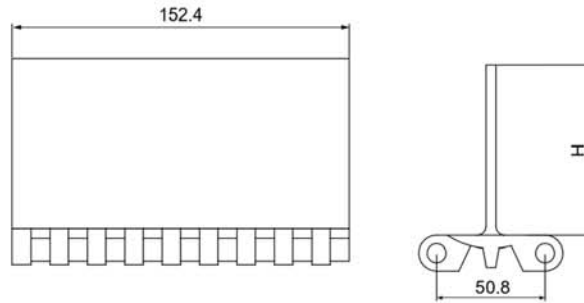
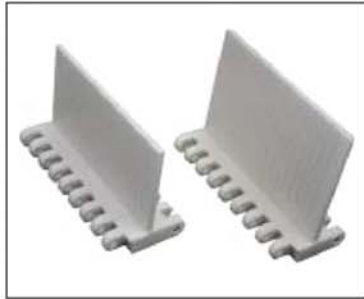
MX710-1 Modular belt



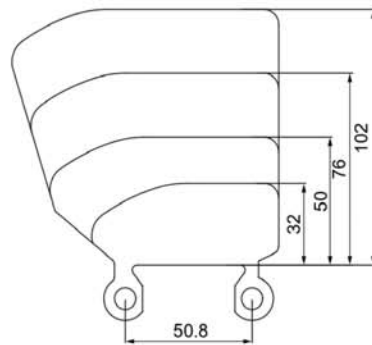
MX710-2 Modular belt



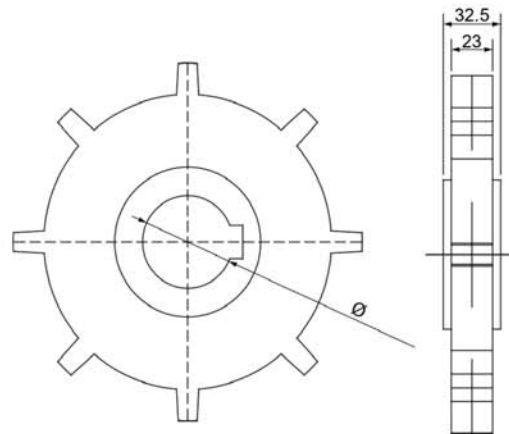
MX710 Baffle



MX710 Side baffle

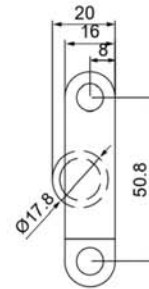
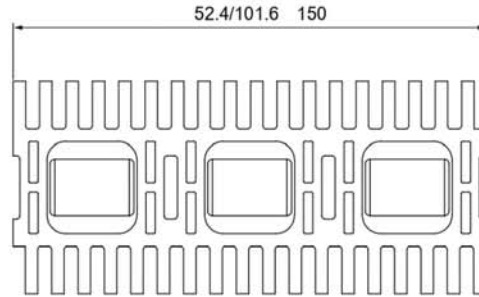


MX710 Sprocket

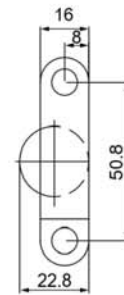
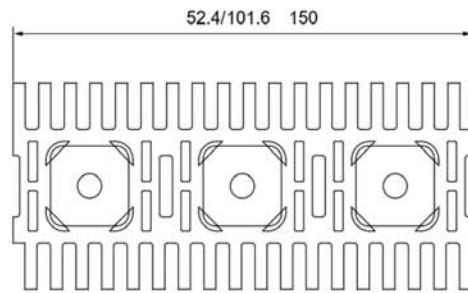


Model	T	D (mm)	D (mm)	(Bore)	
MX710-8T	8	132.7	133.4	□ 40/60	○ 25/30/35
MX710-10T	10	164.4	166.6	□ 40/60	○ 25/30/35
MX710-12T	12	196.3	199	□ 40/60	○ 25/30/35

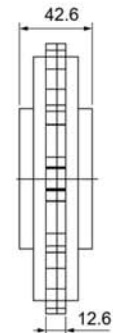
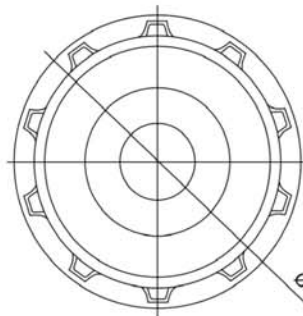
MX720-1 Modular belt



MX720-2 Modular belt



MX720 Molded sprocket

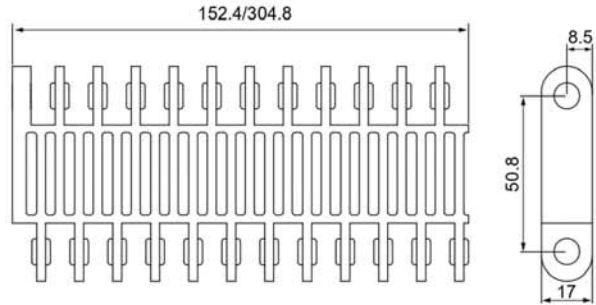


Model	T	D (mm)	D (mm)	(Bore)	
MX720-10T	10	164.4	161.7	□ 40/60	○ 25/30/35
MX720-12T	12	196.3	193.6	□ 40/60	○ 25/30/35
MX720-14T	14	228.3	225.9	□ 40/60	○ 25/30/35



MX730

Modular belt(Battery conveying)

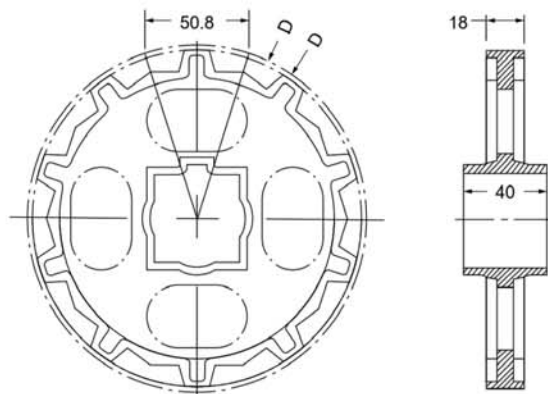


Material	Rod material	Load N/m	Weight Kg/m <sup>2</sup>	W Width (mm)			Assembly assembly
	φ			Single width			
(POM)	PP SUS	26000	10.4	304.8	152.4	/	W=152.4×N
	PA	27000	10.5				
(PP)	PP	18000	6.7				
(PE)	PE	13000	7.1	Note: N is an integer multiple increment, the width of the single piece is standard width, Due to the different material shrinkage rate, the actual width of the mesh belt may have an error about 0.1%-0.3%			

\* If you need non-standard size, please contact us ahead of time, All bases on the real width.

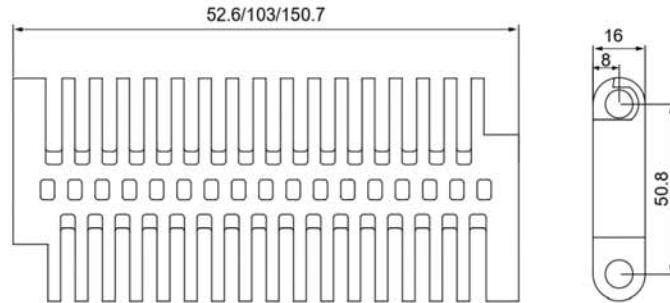
MX730

Molded sprocket

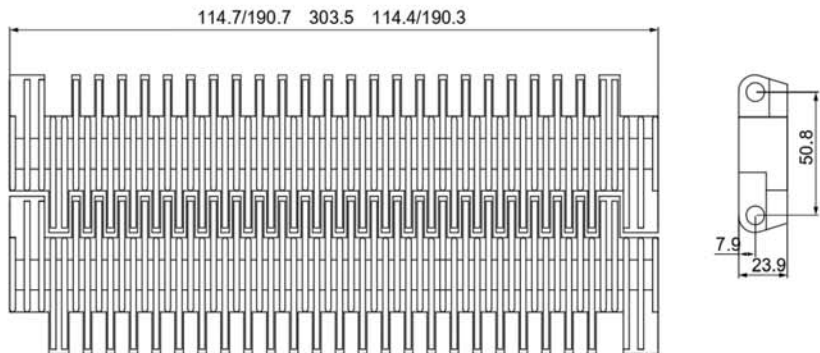


Model	T	D (mm)	D (mm)	(Bore)	
MX730-8T	8	132.75	127.3	□ 38.1/40	○ 40
MX730-10T	10	164.4	160.6	□ 40	○ 40/45

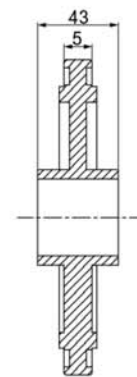
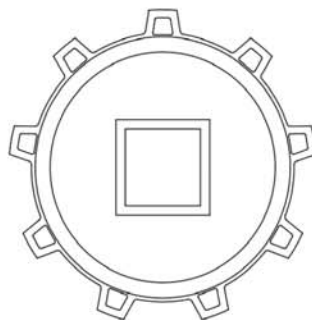
MX740-1 Modular belt



MX740-2 Modular belt



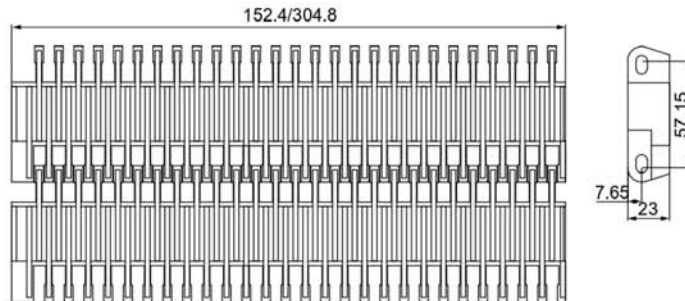
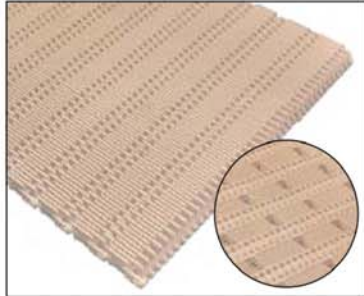
MX740 Molded sprocket



Model	T	D (mm)	D (mm)	(Bore)	
MX740-10T	10	154.3	158.7	□ 40/50/60	○ 30/40/50/60
MX740-12T	12	194.1	198.5	□ 40/50/60	○ 30/40/50/60
MX740-16T	16	255.7	260.1	□ 60/80	○ 40/50/60

## 57.17Pitch 57.17mm series modular belt

MX800-1(4809) Modular belt(4809 sterilization)



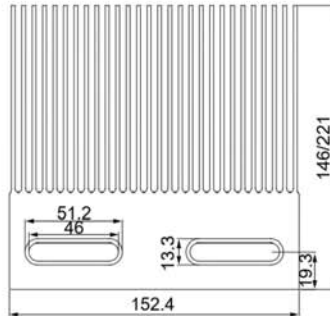
Material	Rod material	Load N/m	Weight Kg/m <sup>2</sup>	W Width (mm)		
	Φ			Single width		Assembly assembly
(POM)	PP SUS	43800	16	152.4	304.8	W=152.4×N
(PP)		29000	10	Note: N is an integer multiple increment, the width of the single piece is standard width, Due to the different material shrinkage rate, the actual width of the mesh belt may have an error about 0.1%-0.3%		

\* If you need non-standard size, please contact us ahead of time, All bases on the real width.

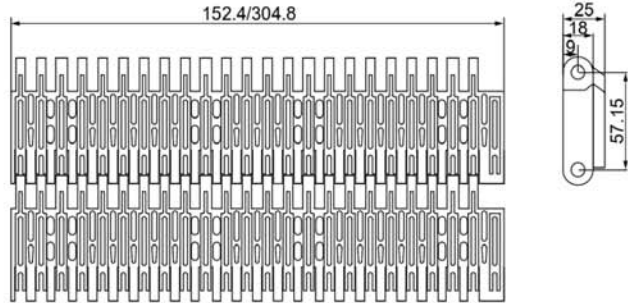
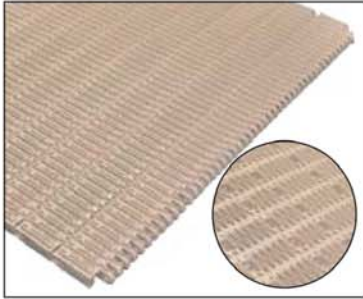
MX800-1-L146 MX800-1-L221



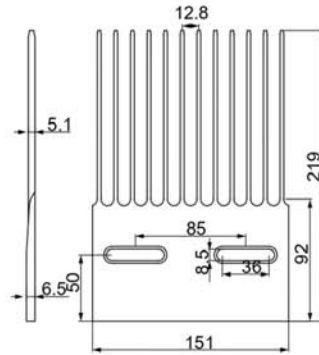
Comb belt



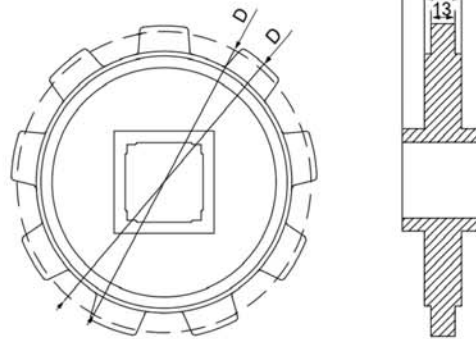
MX800-2(5997) Modular belt



MX800-2 Comb belt



M800 Molded sprocket



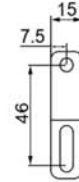
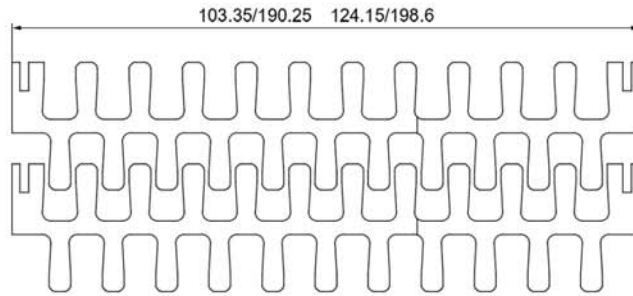
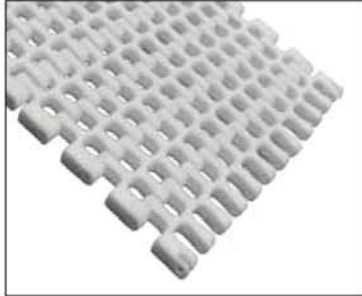
Model	T	D (mm)	D (mm)	(Bore)	
MX800-7T	7	133.58	131.6	□ 40/50/60	○ 30/40/50
MX800-9T	9	167.10	163.0	□ 40/50/60	○ 30/40/50
MX800-12T	12	221.00	221.0	□ 40/50/60	○ 30/40/50
MX800-14T	14	256.80	257.0	□ 50/60/80	○ 30/40/50



**46Pitch 46mm series modular belt**

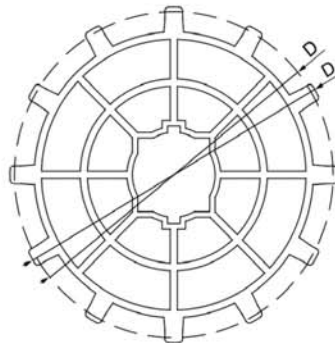
MX900

Modular belt



MX900

Molded sprocket



Model	T	D (mm)	D (mm)	(Bore)	
MX900-12T	12	179.4	183.4	○ 40	Φ45



# AUTHORIZED DISTRIBUTOR :



MOTION POWER AND SERVICES CO., LTD (RAYONG BRANCH)

TEL +66 38016999

🌐 [www.motion.co.th](http://www.motion.co.th) ✉ [sales9@motion.co.th](mailto:sales9@motion.co.th)  
[sales10@motion.co.th](mailto:sales10@motion.co.th)



MOTION POWER CO.,LTD (KORAT BRANCH)

TEL +66 44756092

🌐 [www.motion.co.th](http://www.motion.co.th) ✉ [sales3.mpk@motion.co.th](mailto:sales3.mpk@motion.co.th)  
[sales5.mpk@motion.co.th](mailto:sales5.mpk@motion.co.th)



RPM POWER TRANSMISSION CO., LTD

TEL +66 38212272

✉ [sales@rpmpowertrans.com](mailto:sales@rpmpowertrans.com)



# AUTHORIZED DISTRIBUTOR :



MOTION POWER AND SERVICES CO., LTD (RAYONG BRANCH)

TEL +66 38016999

🌐 [www.motion.co.th](http://www.motion.co.th) ✉ [sales9@motion.co.th](mailto:sales9@motion.co.th)  
[sales10@motion.co.th](mailto:sales10@motion.co.th)



MOTION POWER CO.,LTD (KORAT BRANCH)

TEL +66 44756092

🌐 [www.motion.co.th](http://www.motion.co.th) ✉ [sales3.mpk@motion.co.th](mailto:sales3.mpk@motion.co.th)  
[sales5.mpk@motion.co.th](mailto:sales5.mpk@motion.co.th)



RPM POWER TRANSMISSION CO., LTD

TEL +66 38212272

✉ [sales@rpmpowertrans.com](mailto:sales@rpmpowertrans.com)

