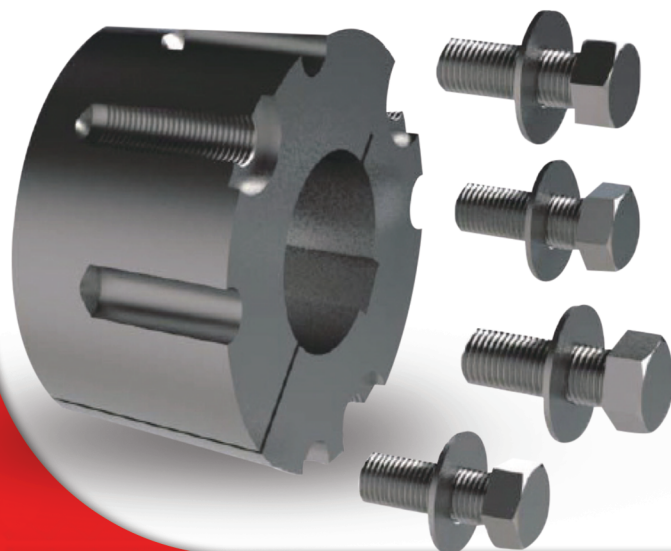
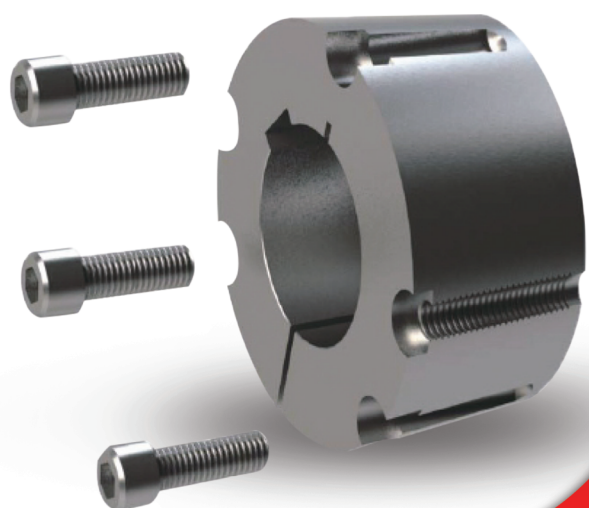


OPTIMUM

TAPER BUSHING



☎ 038-016999

✉ SALES9@MOTION.CO.TH / SALES10@MOTION.CO.TH
MOTION POWER AND SERVICES CO., LTD

CONTENTS

TAPER BUSHING EUROPEAN STANDARD

1008	1
1108	2
1210 1215	3-4
1310	5
1610 1615	6-8
2012 2017	9-11
2517 2525	12-14
3020 3030	15-18
3525 3535	19-22
4030 4040	23-26
4535 4545	27--30
5040 5050	31-33
6050	34
7060	35
8065	36

1008



Cast iron:GG20

Screw Specification:1/4-20BSW×1/2

Transmissible torque: 136Nm

Tools for tighten: Allen wrench 1/8"

Screws Quantity: 2

Screw tightening torque:5.6Nm

Bore In Metric

Product Model	D1	D2	S	D (G7)	b	Js9	t	Weight (Kg)
1008-8MM				8	2		D+1	0.13
1008-9MM				9	3	±0.0125	D+1.4	0.12
1008-10MM				10	3		D+1.4	0.11
1008-11MM				11	4		D+1.8	0.11
1008-12MM				12	4		D+1.8	0.11
1008-14MM				14	5		D+2.3	0.11
1008-15MM				15	5		D+2.3	0.11
1008-16MM	35.2	33.73	22.3	16	5	±0.015	D+2.3	0.1
1008-17MM				17	5		D+2.3	0.1
1008-18MM				18	6		D+2.8	0.09
1008-19MM				19	6		D+2.8	0.09
1008-20MM				20	6		D+2.8	0.07
1008-22MM				22	6		D+2.8	0.07
1008-24MM				24	8		D+1.3	0.06
1008-25MM				25	8	±0.018	D+1.3	0.06

Bore In Inches

Product Model	D1	D2	S	D (G7)	b	t	Weight (Kg)
1008-3/8				3/8"		D+1/16"	0.11
1008-7/16				7/16"	1/8"	D+1/16"	0.11
1008-1/2				1/2"		D+1/16"	0.11
1008-9/16				9/16"		D+3/32"	0.11
1008-5/8				5/8"	3/16"	D+3/32"	0.1
1008-11/16	1.386"	1.328"	0.878"	11/16"		D+3/32"	0.1
1008-3/4				3/4"		D+3/32"	0.1
1008-13/16				13/16"		D+1/8"	0.08
1008-7/8				7/8"	1/4"	D+1/8"	0.07
1008-15/16				15/16"		D+1/8"	0.07
1008-1				1"		D+1/16"	0.06

1108

Taper bushing European standard
 • 1008
 • 1108



Cast iron:GG20

Screw Specification:1/4-20BSW×1/2

Transmissible torque: 147Nm

Bore In Metric

Tools for tighten: Allen wrench 1/8"

Screws Quantity: 2

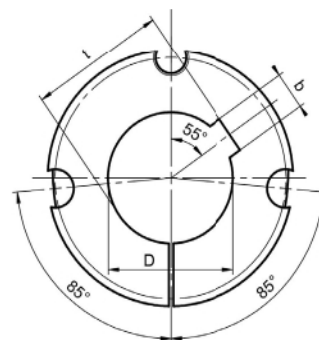
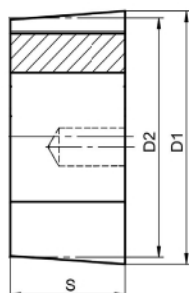
Screw tightening torque:5.6Nm

Product Model	D1	D2	S	D (G7)	b	Js9	t	Weight (Kg)
1108-9MM				9	3	±0.0125	D+1.4	0.15
1108-10MM				10			D+1.4	0.15
1108-11MM				11	4		D+1.8	0.14
1108-12MM				12		D+1.8	0.14	
1108-14MM				14	5		D+2.3	0.14
1108-15MM				15		D+2.3	0.13	
1108-16MM				16		D+2.3	0.12	
1108-17MM				17		±0.015	D+2.3	0.12
1108-18MM	38.32	36.92	22.3	18	D+2.8		0.12	
1108-19MM				19			D+2.8	0.11
1108-20MM				20	6		D+2.8	0.11
1108-21MM				21			D+2.8	0.11
1108-22MM				22			D+2.8	0.11
1108-24MM				24			D+3.3	0.09
1108-25MM				25	8	±0.018	D+3.3	0.08
1108-26MM				26			D+3.3	0.08
1108-28MM				28			D+1.3	0.06

Bore In Inches

Product Model	D1	D2	S	D (G7)	b	t	Weight (Kg)
1108-3/8				3/8"		D+1/16"	0.15
1108-7/16				7/16"	1/8"	D+1/16"	0.15
1108-1/2				1/2"		D+1/16"	0.15
1108-9/16				9/16"		D+3/32"	0.14
1108-5/8				5/8"	3/16"	D+3/32"	0.13
1108-11/16	1.5086"	1.4535"	0.878"	11/16"		D+3/32"	0.13
1108-3/4				3/4"		D+3/32"	0.12
1108-13/16				13/16"		D+1/8"	0.11
1108-7/8				7/8"	1/4"	D+1/8"	0.1
1108-15/16				15/16"		D+1/8"	0.09
1108-1				1"		D+1/8"	0.08
1108-1-1/16				1-1/16"	5/16"	D+1/8"	0.7

1210



Cast iron:GG20

Screw Specification:3/8-16BSW×5/8

Transmissible torque: 407Nm

Bore In Metric

Tools for tighten: Allen wrench 3/16"

Screws Quantity: 2

Screw tightening torque:19.6Nm

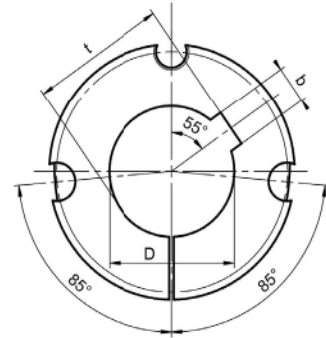
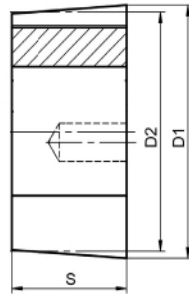
Product Model	D1	D2	S	D (G7)	b	Js9	t	Weight (Kg)		
1210-9MM	47.55	44.44	25.4	9	3	±0.0125	D+1.4	0.27		
1210-10MM				10			D+1.4	0.27		
1210-11MM				11	4		D+1.8	0.27		
1210-12MM							12	D+1.8	0.26	
1210-13MM				13	5		D+2.3	0.25		
1210-14MM							14	D+2.3	0.26	
1210-15MM							15	D+2.3	0.25	
1210-16MM							16	D+2.3	0.24	
1210-17MM							17	D+2.3	0.24	
1210-18MM				18	6		D+2.8	0.23		
1210-19MM							19	D+2.8	0.23	
1210-20MM							20	D+2.8	0.22	
1210-22MM							22	D+2.8	0.2	
1210-23MM				23	8		±0.018	D+3.3	0.2	
1210-24MM								24	D+3.3	0.2
1210-25MM								25	D+3.3	0.18
1210-26MM	26	D+3.3	0.18							
1210-28MM	28	D+3.3	0.16							
1210-30MM	30	D+3.3	0.15							
1210-32MM	32	10	D+3.3			0.14				

Bore In Inches

Product Model	D1	D2	S	D (G7)	b	t	Weight (Kg)	
1210-1/2	1.872"	1.75"	1"	1/2"	1/8"	D+1/16"	0.25	
1210-9/16				9/16"	3/16"	D+3/32"	0.24	
1210-5/8				5/8"		D+3/32"	0.24	
1210-11/16				11/16"		D+3/32"	0.24	
1210-3/4				3/4"		D+3/32"	0.23	
1210-13/16				13/16"	1/4"	D+1/8"	0.22	
1210-7/8						7/8"	D+1/8"	0.22
1210-15/16						15/16"	D+1/8"	0.19
1210-1						1"	D+1/8"	0.19
1210-1-1/16				1-1/16"	5/16"	D+1/8"	0.16	
1210-1-1/8						1-1/8"	D+1/8"	0.16
1210-1-3/16						1-3/16"	D+1/8"	0.16
1210-1-1/4	1-1/4"	D+1/8"	0.13					

1215

Taper bushing European standard
 • 1210
 • 1215



Cast iron:GG20

Screw Specification:3/8-16BSW×5/8

Transmissible torque: 407Nm

Tools for tighten: Allen wrench 3/16"

Screws Quantity: 2

Screw tightening torque:19.6Nm

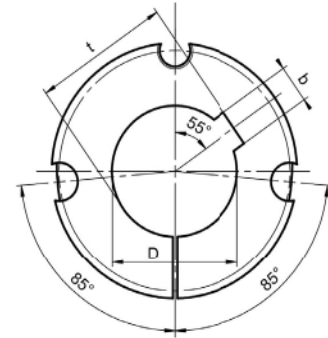
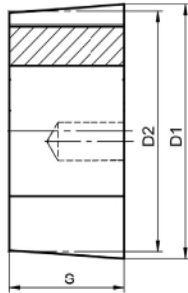
Bore In Metric

Product Model	D1	D2	S	D (G7)	b	Js9	t	Weight (Kg)	
1215-11MM	47.55	44.44	38.1	11	4	±0.015	D+1.8	0.38	
1215-12MM				12			D+1.8	0.36	
1215-14MM				14	5		D+2.3	0.36	
1215-15MM				15			D+2.3	0.35	
1215-16MM				16			D+2.3	0.35	
1215-17MM				17	D+2.3		0.34		
1215-18MM				18	6		D+2.8	0.33	
1215-19MM				19			D+2.8	0.33	
1215-20MM				20			D+2.8	0.29	
1215-22MM				22			D+2.8	0.3	
1215-24MM				24	8		±0.018	D+3.3	0.29
1215-25MM				25				D+3.3	0.28
1215-28MM				28				D+3.3	0.24
1215-30MM				30				D+3.3	0.22
1215-32MM				32				10	D+3.3

Bore In Inches

Product Model	D1	D2	S	D (G7)	b	t	Weight (Kg)
1215-1/2	1.872"	1.75"	1.5"	1/2"	1/8"	D+1/16"	0.36
1215-5/8				5/8"	3/16"	D+3/32"	0.36
1215-11/16				11/16"		D+3/32"	0.34
1215-3/4				3/4"	D+3/32"	0.34	
1215-13/16				13/16"	1/4"	D+1/8"	0.34
1215-7/8				7/8"		D+1/8"	0.33
1215-15/16				15/16"		D+1/8"	0.33
1215-1				1"		D+1/8"	0.29
1215-1-1/16				1-1/16"	5/16"	D+1/8"	0.25
1215-1-1/8				1-1/8"		D+1/8"	0.22
1215-1-3/16				1-3/16"		D+1/8"	0.22
1215-1-1/4				1-1/4"		D+1/8"	0.2

1310



Cast iron:GG20

Screw Specification:3/8-16BSW×5/8

Transmissible torque: 435Nm

Tools for tighten: Allen wrench 3/16"

Screws Quantity: 2

Screw tightening torque:19.6Nm

Bore In Metric

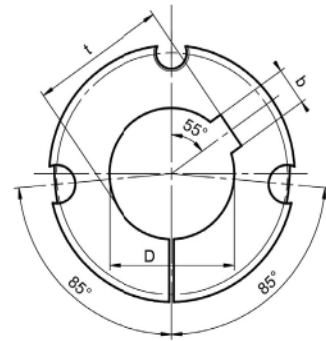
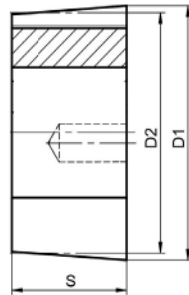
Product Model	D1	D2	S	D (G7)	b	Js9	t	Weight (Kg)
1310-12MM	50.8	47.63	25.4	12	4	±0.015	D+1.8	0.31
1310-14MM				14	5		D+2.3	0.3
1310-16MM				16	5		D+2.3	0.29
1310-18MM				18	6		D+2.8	0.28
1310-19MM				19		D+2.8	0.23	
1310-20MM				20		D+2.8	0.28	
1310-22MM				22	±0.018	D+2.8	0.25	
1310-24MM				24		8	D+3.3	0.24
1310-25MM				25			D+3.3	0.23
1310-28MM				28		10	D+3.3	0.22
1310-30MM	30	D+3.3	0.19					
1310-32MM	32	D+3.3	0.18					
1310-35MM	35	D+3.3	0.14					

Bore In Inches

Product Model	D1	D2	S	D (G7)	b	t	Weight (Kg)
1310-7/8	2"	1.875"	1"	7/8"	1/4"	D+1/8"	0.25
1310-1				1"		D+1/8"	0.23
1310-1-1/4				1-1/4"	5/16"	D+1/8"	0.2
1310-1-3/8				1-3/8"	3/8"	D+1/8"	0.2

1610

Taper bushing European standard
 • 1310
 • 1610



Cast iron:GG20

Screw Specification:3/8-16BSW×5/8

Transmissible torque: 486Nm

Bore In Metric

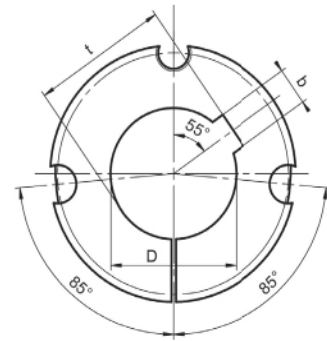
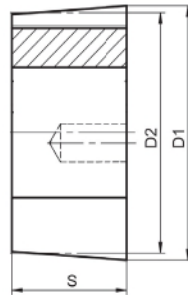
Tools for tighten: Allen wrench 3/16"

Screws Quantity: 2

Screw tightening torque:19.6Nm

Product Model	D1	D2	S	D(G7)	b	Js9	t	Weight (Kg)					
1610-10MM	57.07	53.97	25.4	10	3	±0.0125	D+1.4	0.42					
1610-11MM				11	4	±0.015	D+1.8	0.42					
1610-12MM				12			D+1.8	0.39					
1610-14MM				14	5		D+2.3	0.39					
1610-15MM				15			D+2.3	0.39					
1610-16MM				16		D+2.3	0.38						
1610-17MM				17	D+2.3	0.38							
1610-18MM				18	6	±0.018	D+2.8	0.38					
1610-19MM				19			D+2.8	0.38					
1610-20MM				20			D+2.8	0.36					
1610-22MM				22			D+2.8	0.36					
1610-23MM				57.07	53.97	25.4	23	8	±0.018	D+3.3	0.34		
1610-24MM							24			D+3.3	0.33		
1610-25MM							25			D+3.3	0.33		
1610-26MM							26			D+3.3	0.32		
1610-28MM							28			D+3.3	0.32		
1610-29MM							29			D+3.3	0.28		
1610-30MM							30			D+3.3	0.28		
1610-32MM							32			10	±0.021	D+3.3	0.27
1610-33MM							33					D+3.3	0.27
1610-34MM	34	D+3.3	0.26										
1610-35MM	35	D+3.3	0.24										
1610-36MM	36	D+3.3	0.24										
1610-38MM	38	D+3.3	0.21										
1610-39MM	39	12	±0.021	D+3.3	0.19								
1610-40MM	40			D+3.3	0.18								
1610-42MM	42			D+3.3	0.16								

1610



Cast iron:GG20

Screw Specification:3/8-16BSW×5/8

Transmissible torque: 486Nm

Bore In Inches

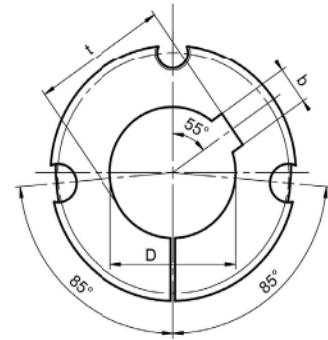
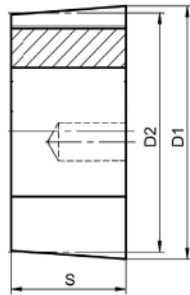
Tools for tighten: Allen wrench 3/16"

Screws Quantity: 2

Screw tightening torque:19.6Nm

Product Model	D1	D2	S	D (G7)	b	t	Weight (Kg)
1610-1/2	2.247"	2.125"	1"	1/2"	1/8"	D+1/16"	0.39
1610-9/16				3/16"	D+3/32"	0.39	
1610-5/8					D+3/32"	0.38	
1610-11/16					D+3/32"	0.38	
1610-3/4					D+3/32"	0.36	
1610-13/16				1/4"	D+1/8"	0.36	
1610-7/8					D+1/8"	0.34	
1610-15/16					D+1/8"	0.34	
1610-1					D+1/8"	0.32	
1610-1-1/16				5/16"	D+1/8"	0.31	
1610-1-1/8					D+1/8"	0.3	
1610-1-3/16					D+1/8"	0.28	
1610-1-1/4					D+1/8"	0.27	
1610-1-5/16				3/8"	D+1/8"	0.24	
1610-1-3/8					D+1/8"	0.24	
1610-1-7/16					D+1/8"	0.23	
1610-1-1/2					D+1/8"	0.21	
1610-1-5/8				7/16"	D+1/8"	0.16	

1615



Taper bushing European standard
 • 1610
 • 1615

Cast iron:GG20

Screw Specification:3/8-16BSW×5/8

Transmissible torque: 486Nm

Tools for tighten: Allen wrench 3/16"

Screws Quantity: 2

Screw tightening torque:19.6Nm

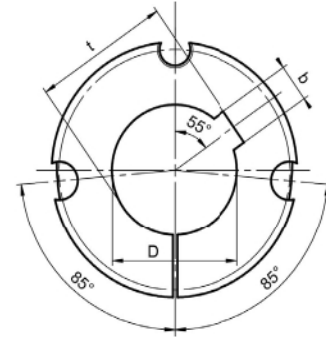
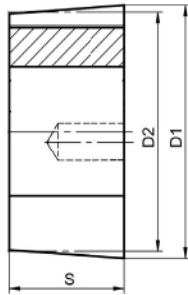
Bore In Metric

Product Model	D1	D2	S	D (G7)	b	Js9	t	Weight (Kg)	
1615-12MM	57.07	53.97	38.1	12	4	±0.015	D+1.8	0.58	
1615-14MM				14	5		D+2.3	0.57	
1615-15MM				15			D+2.3	0.56	
1615-16MM				16	D+2.3		0.55		
1615-18MM				18	6		D+2.8	0.54	
1615-19MM				19			D+2.8	0.54	
1615-20MM				20		D+2.8	0.53		
1615-22MM				22		D+2.8	0.51		
1615-24MM				±0.018	24	8	D+3.3	0.4	
1615-25MM					25		D+3.3	0.47	
1615-26MM					26		D+3.3	0.46	
1615-27MM					27		D+3.3	0.46	
1615-28MM					28		D+3.3	0.42	
1615-30MM					30		D+3.3	0.4	
1615-32MM					32		10	D+3.3	0.39
1615-35MM					35			D+3.3	0.34
1615-38MM	38	D+3.3	0.3						
1615-40MM	±0.021	40	12	D+3.3	0.26				
1615-42MM		42		D+2.2	0.25				

Bore In Inches

Product Model	D1	D2	S	D (G7)	b	t	Weight (Kg)		
1615-3/8	2.247"	2.125"	1.5"	3/8"	1/8"	D+1/16"	0.60		
1615-1/2				1/2"		D+1/16"	0.60		
1615-5/8				5/8"	3/16"	D+3/32"	0.60		
1615-3/4				3/4"		D+3/32"	0.53		
1615-7/8				7/8"	1/4"	D+1/8"	0.50		
1615-1				1"		D+1/8"	0.47		
1615-1-1/8				5/16"	1-1/8"	3/8"	D+1/8"	0.42	
1615-1-3/16					1-3/16"		D+1/8"	0.40	
1615-1-1/4					1-1/4"		D+1/8"	0.40	
1615-1-3/8					1-3/8"		D+1/8"	0.35	
1615-1-7/16					1-7/16"		7/16"	D+1/8"	0.32
1615-1-1/2					1-1/2"			D+1/8"	0.30
1615-1-5/8					1-5/8"			D+1/8"	0.24

2012



Cast iron:GG20

Screw Specification:7/16-14BSW×7/8

Transmissible torque: 808Nm

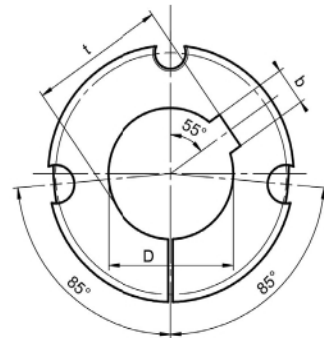
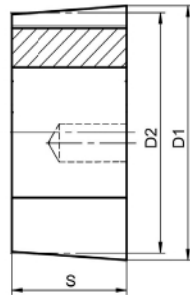
Bore In Metric

Tools for tighten: Allen wrench 7/32"

Screws Quantity: 2

Screw tightening torque:30.4Nm

Product Model	D1	D2	S	D(G7)	b	Js9	t	Weight (Kg)
2012-11MM	69.77	66.68	31.8	11	4	±0.015	D+1.8	0.76
2012-12MM				12			D+1.8	0.76
2012-14MM				5	D+2.3		0.75	
2012-15MM							15	0.72
2012-16MM							16	0.72
2012-17MM				17	0.72			
2012-18MM				6	D+2.8	0.72		
2012-19MM						19	0.72	
2012-20MM						20	0.72	
2012-22MM						22	0.69	
2012-23MM				±0.018	D+3.3	0.69		
2012-24MM						24	0.68	
2012-25MM						8	D+3.3	0.66
2012-26MM							26	0.66
2012-28MM							28	0.64
2012-30MM						30	0.61	
2012-32MM						10	D+3.3	0.6
2012-33MM								33
2012-34MM				34	0.59			
2012-35MM				35	0.57			
2012-36MM				36	0.55			
2012-37MM				37	0.55			
2012-38MM				38	0.52			
2012-40MM				12	D+3.3	0.5		
2012-42MM						42	0.46	
2012-45MM				±0.021	D+3.8	0.42		
2012-47MM						14	D+3.8	0.38
2012-48MM							D+3.8	0.36
2012-49MM							D+3.8	0.34
2012-50MM						50	0.33	



Cast iron:GG20

Screw Specification:7/16-14BSW×7/8

Transmissible torque: 808Nm

Bore In Inches

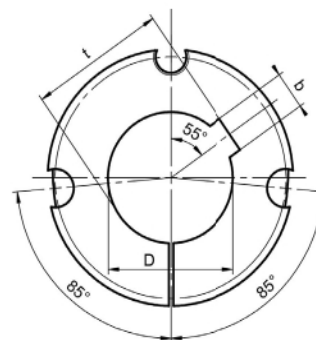
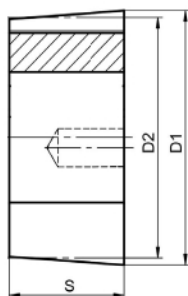
Tools for tighten: Allen wrench 7/32"

Screws Quantity: 2

Screw tightening torque:30.4Nm

Product Model	D1	D2	S	D (G7)	b	t	Weight (Kg)			
2012-1/2	2.747"	2.625"	1.25"	1/2"	1/8"	D+1/16"	0.75			
2012-9/16				9/16"	3/16"	D+3/32"	0.76			
2012-5/8				5/8"		D+3/32"	0.74			
2012-11/16				11/16"		D+3/32"	0.73			
2012-3/4				3/4"		D+3/32"	0.7			
2012-13/16				13/16"	1/4"	D+1/8"	0.71			
2012-7/8				7/8"		D+1/8"	0.7			
2012-15/16				15/16"		D+1/8"	0.68			
2012-1				1"		D+1/8"	0.66			
2012-1-1/16				2.747"	2.625"	1.25"	1-1/16"	5/16"	D+1/8"	0.65
2012-1-1/8							1-1/8"		D+1/8"	0.64
2012-1-3/16							1-3/16"		D+1/8"	0.63
2012-1-1/4							1-1/4"		D+1/8"	0.6
2012-1-5/16							1-5/16"	3/8"	D+1/8"	0.59
2012-1-3/8							1-3/8"		D+1/8"	0.57
2012-1-7/16							1-7/16"		D+1/8"	0.54
2012-1-1/2							1-1/2"	D+1/8"	0.52	
2012-1-5/8							1-5/8"	7/16"	D+5/32"	0.48
2012-1-11/16							1-11/16"		D+5/32"	0.48
2012-1-3/4				1-3/4"	D+5/32"	0.43				
2012-1-7/8				1-7/8"	D+5/32"	0.38				
2012-1-15/16				1-15/16"	1/2"	D+5/32"	0.34			
2012-2				2"		D+5/32"	0.32			

2017



Cast iron:GG20

Screw Specification:7/16-14BSW×7/8

Transmissible torque: 808Nm

Tools for tighten: Allen wrench 3/32"

Screws Quantity: 2

Screw tightening torque:30.4Nm

Bore In Metric

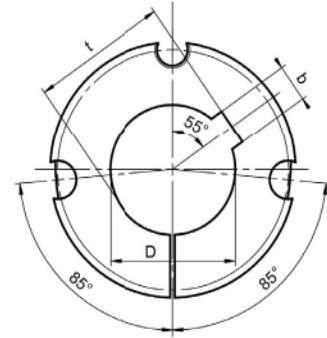
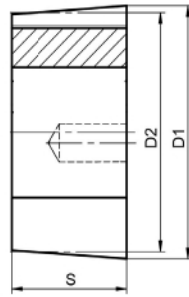
Product Model	D1	D2	S	D (G7)	b	Js9	t	Weight (Kg)
2017-14MM	69.77	66.68	44.5	14	5	±0.015	D+2.3	1.2
2017-18MM				18	6		D+2.8	1.2
2017-19MM				19			D+2.8	1.18
2017-20MM				20			D+2.8	1.1
2017-22MM				22			D+2.8	1
2017-24MM				±0.018	24	8	D+3.3	0.98
2017-25MM					25		D+3.3	0.91
2017-28MM					28		D+3.3	0.88
2017-30MM					30		D+3.3	0.82
2017-32MM				±0.021	32	10	D+3.3	0.75
2017-35MM					35		D+3.3	0.73
2017-38MM					38		D+3.3	0.7
2017-40MM				±0.021	40	12	D+3.3	0.68
2017-42MM					42		D+3.3	0.62
2017-45MM				±0.021	45	14	D+3.8	0.57
2017-48MM					48		D+3.8	0.5
2017-50MM	50	D+3.8	0.47					

Bore In Inches

Product Model	D1	D2	S	D (G7)	b	t	Weight (Kg)
2017-1	2.747"	2.625"	1.75"	1"	1/4"	D+1/8"	0.9
2017-1-1/8				1-1/8"	5/16"	D+1/8"	0.87
2017-1-1/4				1-1/4"		D+1/8"	0.82
2017-1-3/8				1-3/8"	3/8"	D+1/8"	0.76
2017-1-1/2				1-1/2"		D+1/8"	0.7
2017-1-3/4				1-3/4"	7/16"	D+5/32"	0.58
2017-1-7/8				1-7/8"	1/2"	D+5/32"	0.54
2017-2				2"		D+5/32"	0.42

2517

Taper bushing European standard
 ●2017
 ●2517



Cast iron:GG20

Screw Specification:1/2-12BSW×1

Transmissible torque: 1310Nm

Bore In Metric

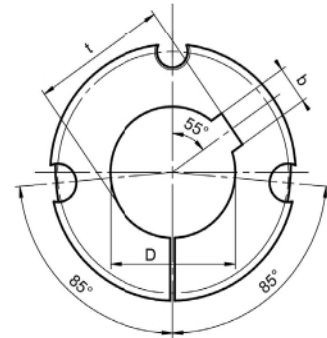
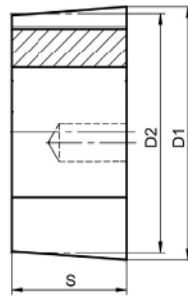
Tools for tighten: Allen wrench 1/4"

Screws Quantity: 2

Screw tightening torque:48Nm

Product Model	D1	D2	S	D (G7)	b	Js9	t	Weight (Kg)
2517-10MM	85.65	82.55	44.5	10	3	±0.0125	D+1.4	1.63
2517-11MM				11	4		D+1.8	1.63
2517-12MM				12			D+1.8	1.61
2517-14MM				14	5		D+2.3	1.6
2517-15MM				15			D+2.3	1.6
2517-16MM				16			D+2.3	1.6
2517-17MM				17			D+2.3	1.58
2517-18MM				18	6		D+2.8	1.58
2517-19MM				19			D+2.8	1.56
2517-20MM				20			D+2.8	1.54
2517-22MM				22		D+2.8	1.52	
2517-24MM				24	8	D+3.3	1.5	
2517-25MM				25		D+3.3	1.5	
2517-28MM				28		D+3.3	1.44	
2517-30MM				30		D+3.3	1.43	
2517-32MM				32	10	D+3.3	1.41	
2517-33MM				33		D+3.3	1.38	
2517-34MM				34		D+3.3	1.36	
2517-35MM				35		D+3.3	1.35	
2517-36MM				36		D+3.3	1.32	
2517-38MM				38		D+3.3	1.26	
2517-40MM				40	12	D+3.3	1.25	
2517-42MM				42		D+3.3	1.25	
2517-43MM				43		D+3.3	1.25	
2517-45MM				45		14	D+3.8	1.17
2517-47MM				47			D+3.8	1.09
2517-48MM				48			D+3.8	1.06
2517-50MM				50	D+3.8		1	
2517-52MM				52	16	D+4.3	1	
2517-54MM				54		D+4.3	0.94	
2517-55MM				55		D+4.3	0.87	
2517-56MM				56		D+4.3	0.86	
2517-57MM	57	D+4.3	0.86					
2517-58MM	58	D+4.3	0.85					
2517-60MM	60	18	D+4.4	0.74				
2517-63MM	63		D+4.4	0.64				
2517-65MM	65		D+3.3	0.6				

2517



Cast iron:GG20

Screw Specification:1/2-12BSW×1

Transmissible torque: 1310Nm

Bore In Metric

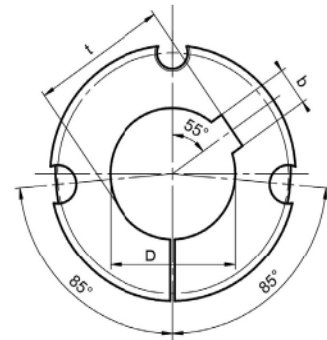
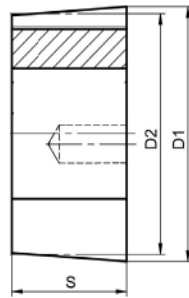
Tools for tighten: Allen wrench 1/4"

Screws Quantity: 2

Screw tightening torque:48Nm

Product Model	D1	D2	S	D (G7)	b	t	Weight [Kg]			
2517-1/2	3.372"	3.25"	1.75"	1/2"	1/8"	D+1/16"	1.62			
2517-5/8				5/8"	3/16"	D+3/32"	1.6			
2517-3/4				3/4"		D+3/32"	1.56			
2517-13/16				13/16"	1/4"	D+1/8"	1.56			
2517-7/8				7/8"		D+1/8"	1.53			
2517-15/16				15/16"		D+1/8"	1.51			
2517-1				1"		D+1/8"	1.49			
2517-1-1/16				1-1/16"	5/16"	D+1/8"	1.47			
2517-1-1/8				1-1/8"		D+1/8"	1.45			
2517-1-3/16				1-3/16"		D+1/8"	1.43			
2517-1-1/4				1-1/4"		D+1/8"	1.41			
2517-1-5/16				3.372"	3.25"	1.75"	1-5/16"	3/8"	D+1/8"	1.36
2517-1-3/8							1-3/8"		D+1/8"	1.35
2517-1-7/16							1-7/16"		D+1/8"	1.33
2517-1-1/2							1-1/2"	D+1/8"	1.29	
2517-1-5/8							1-5/8"	7/16"	D+5/32"	1.2
2517-1-11/16							1-11/16"		D+5/32"	1.18
2517-1-3/4							1-3/4"		D+5/32"	1.16
2517-1-7/8							1-7/8"	1/2"	D+5/32"	1.08
2517-1-15/16							1-15/16"		D+5/32"	1.03
2517-2							2"		D+5/32"	1
2517-2-1/8				2-1/8"	5/8"	D+7/32"	0.93			
2517-2-3/16				2-3/16"		D+7/32"	0.9			
2517-2-1/4				2-1/4"		D+7/32"	0.82			
2517-2-5/16				2-5/16"		D+7/32"	0.78			
2517-2-3/8				2-3/8"		D+7/32"	0.72			
2517-2-7/16				2-7/16"		D+7/32"	0.68			
2517-2-1/2				2-1/2"	D+7/32"	0.63				

2525



Taper bushing European standard
 • 2517
 • 2525

Cast iron:GG20

Screw Specification:1/2-12BSW×1

Transmissible torque: 1310Nm

Bore In Metric

Tools for tighten: Allen wrench 1/4"

Screws Quantity: 2

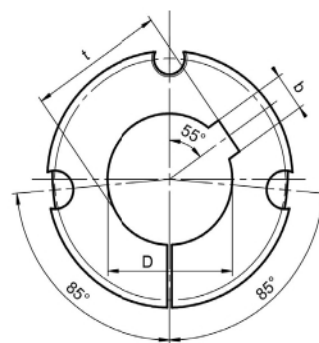
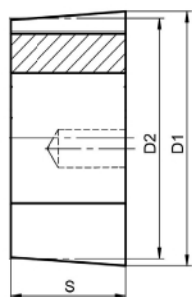
Screw tightening torque:48Nm

Product Model	D1	D2	S	D (G7)	b	Js9	t	Weight (Kg)
2525-16MM	85.65	82.55	63.5	16	5	±0.015	D+2.3	2.15
2525-18MM				18	6		D+2.8	2.1
2525-19MM				19			D+2.8	2.1
2525-20MM				20			D+2.8	2.1
2525-22MM				22			D+2.8	2.1
2525-24MM				24			±0.018	D+3.3
2525-25MM				25		D+3.3		2.07
2525-28MM				28	D+3.3	2.02		
2525-30MM				30	D+3.3	1.98		
2525-32MM				32	±0.021	D+3.3		1.95
2525-35MM				35		D+3.3		1.85
2525-38MM				38		D+3.3	1.79	
2525-40MM				40		±0.021	D+3.3	1.72
2525-42MM				42			D+3.3	1.67
2525-45MM				45			D+3.8	1.56
2525-48MM				48	D+3.8		1.48	
2525-50MM				50	D+3.8		1.4	
2525-55MM				55	16		D+4.3	1.21
2525-60MM	60	18	D+4.4	1				
2525-65MM	65		D+2.8	0.83				

Bore In Inches

Product Model	D1	D2	S	D (G7)	b	t	Weight (Kg)	
2525-7/8	3.372"	3.25"	2.5"	7/8"	1/4"	D+1/8"	2.14	
2525-1				1"	D+1/8"	2.08		
2525-1-1/8				1-1/8"	5/16"	D+1/8"	2.01	
2525-1-1/4				1-1/4"		D+1/8"	1.95	
2525-1-3/8				1-3/8"		3/8"	D+1/8"	1.86
2525-1-1/2				1-1/2"			D+1/8"	1.78
2525-1-5/8				1-5/8"		7/16"	D+5/32"	1.6
2525-1-3/4				1-3/4"			D+5/32"	1.59
2525-1-7/8				1-7/8"	1/2"	D+5/32"	1.47	
2525-1-15/16				1-15/16"		D+5/32"	1.4	
2525-2				2"		D+5/32"	1.35	
2525-2-1/8				2-1/8"		5/8"	D+7/32"	1.24
2525-2-1/4				2-1/4"			D+7/32"	1.11
2525-2-3/8				2-3/8"			D+7/32"	1
2525-2-1/2				2-1/2"	D+7/32"		0.83	

3020



Cast iron:GG20

Screw Specification:5/8-11BSW×1-1/4

Transmissible torque: 2710Nm

Bore In Metric

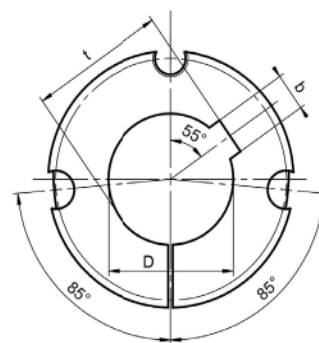
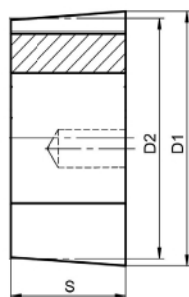
Tools for tighten: Allen wrench 5/16"

Screws Quantity: 2

Screw tightening torque:90Nm

Product Model	D1	D2	S	D (G7)	b	Js9	t	Weight (Kg)
3020-20MM	107.87	101.6	50.8	20	6	±0.015	D+2.8	2.86
3020-22MM				22			D+2.8	2.86
3020-24MM				24			D+3.3	2.83
3020-25MM				25	2.8			
3020-28MM				28	2.76			
3020-30MM				30	2.74			
3020-32MM				32	±0.018	D+3.3	2.68	
3020-33MM				33		D+3.3	2.67	
3020-34MM				34		D+3.3	2.66	
3020-5MM				35	10	D+3.3	2.64	
3020-36MM				36		D+3.3	2.62	
3020-38MM				38		D+3.3	2.54	
3020-40MM				40	12	D+3.3	2.53	
3020-42MM				42		D+3.3	2.52	
3020-43MM				43		D+3.3	2.52	
3020-45MM				45	14	D+3.8	2.45	
3020-47MM				47		D+3.8	2.4	
3020-48MM				48		D+3.8	2.4	
3020-49MM				49	16	D+3.8	2.32	
3020-50MM				50		D+3.8	2.28	
3020-52MM				52		±0.021	D+4.3	2.21
3020-53MM				53	D+4.3		2.21	
3020 54MM				54	D+4.3		2.18	
3020-55MM				55	18	D+4.3	2.06	
3020-56MM				56		D+4.3	2.09	
3020-58MM				58		D+4.3	2.04	
3020-60MM				60	20	D+4.4	1.91	
3020-62MM				62		D+4.4	1.88	
3020 63MM				63		D+4.4	1.82	
3020-65MM				65	±0.026	D+4.4	1.72	
3020-70MM	70	D+4.9	1.46					
3020-72MM	72	D+4.9	1.46					
3020 73MM	73	22	D+4.9	1.46				
3020-75MM	75		D+4.9	1.38				
3020-78MM	78		D+4.9	1.29				
3020-80MM	80	D+5.4	1.15					

Taper bushing European standard
●3020



Cast iron:GG20

Screw Specification:5/8-11BSW×1-1/4

Transmissible torque: 2710Nm

Bore In Inches

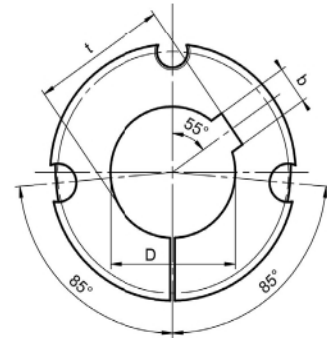
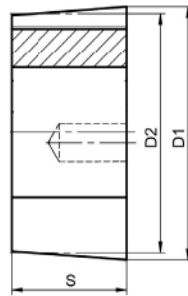
Tools for tighten: Allen wrench 5/16"

Screws Quantity: 2

Screw tightening torque:90Nm

Product Model	D1	D2	S	D (G7)	b	t	Weight (Kg)	
3020-7/8	4.247"	4"	2"	7/8	1/4"	D+1/8"	2.86	
3020-15/16				15/16		D+1/8"	2.82	
3020-1				1		D+1/8"	2.79	
3020-1-1/8				5/16"	1-1/8	D+1/8"	2.76	
3020-1-3/16					1-3/16	D+1/8"	2.72	
3020-1-1/4					1-1/4	D+1/8"	2.68	
3020-1-5/16				3/8"	1-5/16	D+1/8"	2.65	
3020-1-3/8					1-3/8	D+1/8"	2.63	
3020-1-7/16					1-7/16	D+1/8"	2.62	
3020-1-1/2					1-1/2	D+1/8"	2.56	
3020-1-9/16				7/16"	1-9/16	D+5/32"	2.52	
3020-1-5/8					1-5/8	D+5/32"	2.5	
3020-1-11/16					1-11/16	D+5/32"	2.47	
3020-1-3/4					1-3/4	D+5/32"	2.42	
3020-1-13/16				1/2"	1-13/16	D+5/32"	2.4	
3020-1-7/8					1-7/8	D+5/32"	2.36	
3020-1-15/16					1-15/16	D+5/32"	2.3	
3020-2					2	D+5/32"	2.26	
3020-2-1/16					5/8"	2-1/16	D+7/32"	2.19
3020-2-1/8						2-1/8	D+7/32"	2.17
3020-2-3/16				2-3/16		D+7/32"	2.1	
3020-2-1/4				2-1/4		D+7/32"	2.05	
3020-2-5/16				2-5/16		D+7/32"	2	
3020-2-3/8				2-3/8		D+7/32"	1.94	
3020-2-7/16				2-7/16		D+7/32"	1.88	
3020-2-1/2				2-1/2	D+7/32"	1.82		
3020-2-5/8				3/4"	2-5/8	D+1/4"	1.71	
3020-2-11/16					2-11/16	D+1/4"	1.6	
3020-2-3/4					2-3/4	D+1/4"	1.57	
3020-2-13/16					2-13/16	D+1/4"	1.45	
3020-2-7/8	2-7/8	D+1/4"	1.45					
3020-2-15/16	2-15/16	D+1/4"	1.36					
3020-3	3	D+1/4"	1.31					

3030



Cast iron:GG20

Screw Specification:5/8-11BSW×1-1/4

Transmissible torque: 2710Nm

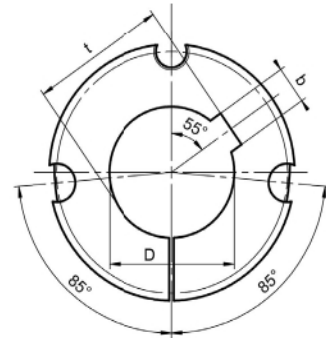
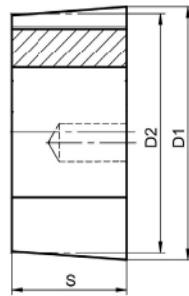
Bore In Metric

Tools for tighten: Allen wrench 5/16"

Screws Quantity: 2

Screw tightening torque:90Nm

Product Model	D1	D2	S	D (G7)	b	Js9	t	Weight [Kg]
3030-19MM	107.87	101.6	76.2	19	6	±0.015	D+2.8	4.21
3030-25MM				25	8	±0.018	D+3.3	4.08
3030-28MM				28			D+3.3	4
3030-30MM				30			D+3.3	3.94
3030-32MM				32	10	±0.018	D+3.3	3.83
3030-35MM				35			D+3.3	3.82
3030-36MM				36			D+3.3	3.78
3030-38MM				38			D+3.3	3.75
3030-40MM				40	12	±0.021	D+3.3	3.67
3030-42MM				42			D+3.3	3.62
3030-45MM				45			D+3.8	3.48
3030-48MM				48			D+3.8	3.33
3030-50MM				50			D+3.8	3.28
3030-55MM				55			D+4.3	3.07
3030-60MM				60	18	±0.026	D+4.4	2.81
3030-65MM				65			D+4.4	2.46
3030-70MM				70	20	±0.026	D+4.9	2.26
3030-75MM				75			D+4.9	1.92
3030-80MM				80			D+5.4	1.6



Cast iron:GG20

Screw Specification:5/8-11BSW×1-1/4

Transmissible torque: 2710Nm

Bore In Inches

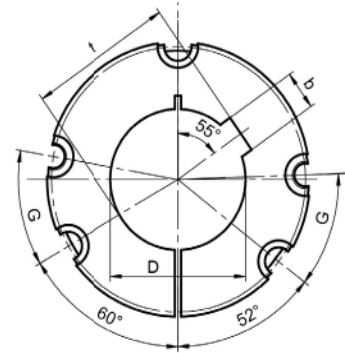
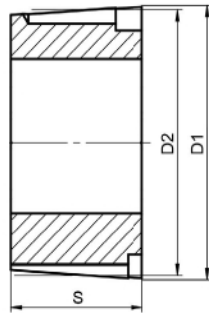
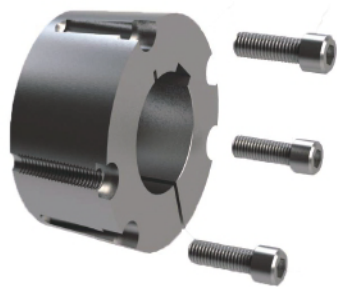
Tools for tighten: Allen wrench 5/16"

Screws Quantity: 2

Screw tightening torque:90Nm

Product Model	D1	D2	S	D (G7)	b	t	Weight (Kg)	
3030-1-3/16	4.247"	4"	3"	1-3/16"	5/16"	D+1/8"	3.96	
3030-1-1/4				1-1/4"		D+1/8"	3.96	
3030-1-3/8				1-3/8"	3/8"	D+1/8"	3.84	
3030-1-7/16				1-7/16"		D+1/8"	3.8	
3030-1-1/2				1-1/2"	D+1/8"	3.77		
3030-1-5/8				1-5/8"	7/16"	D+5/32"	3.65	
3030-1-11/16				1-11/16"		D+5/32"	3.56	
3030-1-3/4				1-3/4"	D+5/32"	3.52		
3030-1-7/8				1-7/8"	1/2"	D+5/32"	3.6	
3030-1-15/16				1-15/16"		D+5/32"	3.36	
3030-2				2"	D+5/32"	3.26		
3030-2-1/8				5/8"	D+7/32"	2-1/8"	3.08	
3030-2-3/16						2-3/16"	3.16	
3030-2-1/4						2-1/4"	2.8	
3030-2-3/8						2-3/8"	2.8	
3030-2-7/16						2-7/16"	2.7	
3030-2-1/2						2-1/2"	2.6	
3030-2-5/8						3/4"	D+1/4"	2.41
3030-2-3/4							D+1/4"	2.28
3030-2-7/8							D+1/4"	2.04
3030-2-15/16	D+1/4"	1.9						
3030-3	3"	D+1/4"	1.86					

3525



Cast iron:GG20

Screw Specification:1/2-12BSW×1-1/2

Transmissible torque: 5060Nm

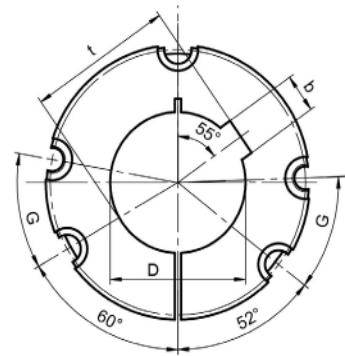
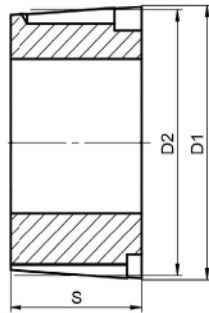
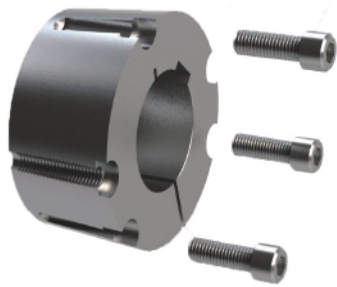
Bore In Metric

Tools for tighten: Allen wrench 3/8"

Screws Quantity: 3

Screw tightening torque:112Nm

Product Model	D1	D2	S	D (G7)	b	Js9	t	Weight [Kg]
3525-24MM	126.8	122.68	63.5	24	8	±0.018	D+3.3	4.97
3525-25MM				D+3.3			4.95	
3525-28MM				D+3.3			4.86	
3525-30MM				D+3.3			4.9	
3525-32MM				32	10		D+3.3	4.8
3525-35MM				35			D+3.3	4.7
3525-37MM				37			D+3.3	4.69
3525-38MM				38			D+3.3	4.68
3525-40MM				40	12	D+3.3	4.54	
3525-42MM				42		D+3.3	4.52	
3525-43MM				43		D+3.3	4.4	
3525-45MM				45	14	D+3.8	4.43	
3525-48MM				48		D+3.8	4.34	
3525-50MM				50		D+3.8	4.29	
3525-54MM				54	16	D+4.3	4.1	
3525-55MM				55		D+4.3	4.08	
3525-56MM				56		D+4.3	4	
3525-60MM				60	18	D+4.4	3.86	
3525-65MM				65		D+4.4	3.65	
3525-70MM				70	20	D+4.9	3.42	
3525-72MM	72	D+4.9	3.3					
3525-75MM	75	D+4.9	3.16					
3525-80MM	80	22	D+5.4	2.86				
3525-85MM	85		D+5.4	2.57				
3525-89MM	89		D+5.4	2.25				
3525-90MM	90	25	D+5.4	2.25				
3525-95MM	95		D+5.4	1.91				
3525-100MM	100	28	D+4.4	1.58				



Cast iron:GG20

Screw Specification:1/2-12BSW×1-1/2

Transmissible torque: 5060Nm

Bore In Inches

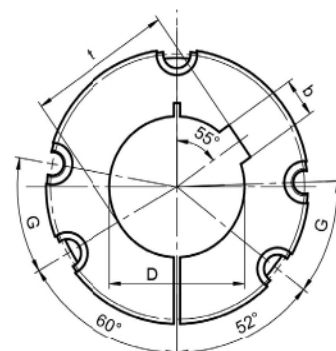
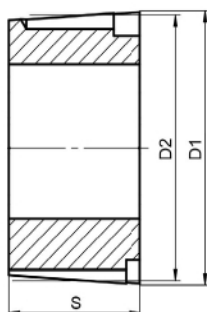
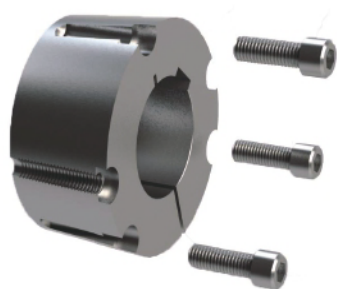
Tools for tighten: Allen wrench 3/8"

Screws Quantity: 3

Screw tightening torque:112Nm

Product Model	D1	D2	S	D (G7)	b	t	Weight [Kg]							
3525-1-1/4	4.992"	4.83"	2.5"	1-1/4"	5/16"	D+1/8"	4.78							
3525-1-3/8				1-3/8"	3/8"	D+1/8"	4.71							
3525-1-1/2				1-1/2"	D+1/8"	4.66								
3525-1-5/8				1-5/8"	7/16"	D+5/32"	4.54							
3525-1-3/4				1-3/4"		D+5/32"	4.45							
3525-1-7/8				1-7/8"	1/2"	D+5/32"	4.37							
3525-2				2"		D+5/32"	4.27							
3525-2-1/8				4.992"	4.83"	2.5"	2-1/8"	5/8"	D+7/32"	4.11				
3525-2-3/16							2-3/16"		D+7/32"	4.05				
3525-2-1/4							2-1/4"		D+7/32"	4				
3525-2-3/8							2-3/8"		D+7/32"	3.86				
3525-2-7/16							2-7/16"		D+7/32"	3.8				
3525-2-1/2							2-1/2"		D+7/32"	3.71				
3525-2-5/8							4.992"		4.83"	2.5"	2-5/8"	3/4"	D+1/4"	3.55
3525-2-3/4											2-3/4"		D+1/4"	3.38
3525-2-7/8											2-7/8"		D+1/4"	3.38
3525-2-15/16											2-15/16"		D+1/4"	3.17
3525-3				3"	D+1/4"	3.02								
3525-3-1/8				4.992"	4.83"	2.5"	3-1/8"	7/8"	D+5/16"	2.88				
3525-3-1/4							3-1/4"		D+5/16"	2.69				
3525-3-5/16	3-5/16"	D+5/16"	2.56											
3525-3-3/8	3-3/8"	D+5/16"	2.5											
3525-3-7/16	3-7/16"	D+5/16"	2.28											
3525-3-1/2	3-1/2"	D+5/16"	2.26											
3525-3-5/8	3-5/8"	1"	D+1/4"				2							
3525-3-11/16	3-11/16"		D+1/4"				1.97							
3525-3-3/4	3-3/4"	D+1/4"	1.91											

3535



Cast iron:GG20

Screw Specification:1/2-12BSW×1-1/2

Transmissible torque: 5060Nm

Bore In Metric

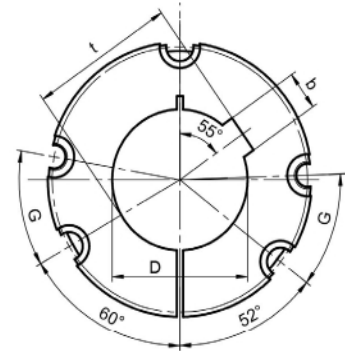
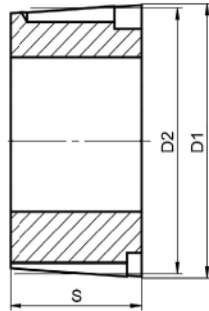
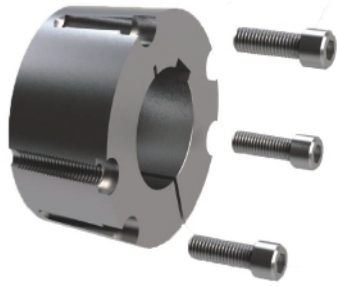
Tools for tighten: Allen wrench 3/8"

Screws Quantity: 3

Screw tightening torque:112Nm

Product Model	D1	D2	S	D (G7)	b	Js9	t	Weight [Kg]
3535-24MM	126.8	122.68	89	24	8	±0.018	D+3.3	7.1
3535-25MM				25			D+3.3	6.73
3535-28MM				28			D+3.3	6.58
3535-30MM				30			D+3.3	6.54
3535-32MM				32	10		D+3.3	6.6
3535-35MM				35			D+3.3	6.38
3535-36MM				36			D+3.3	6.38
3535-37MM				37			D+3.3	6.35
3535-38MM				38	D+3.3	6.32		
3535-40MM				40	12	±0.021	D+3.3	6.24
3535-42MM				42			D+3.3	6.15
3535-45MM				45	14		D+3.8	6.02
3535-46MM				46			D+3.8	5.96
3535-48MM				48			D+3.8	5.8
3535-49MM				49			D+3.8	5.8
3535-50MM				50	16		D+3.8	5.65
3535-52MM				52			D+4.3	5.66
3535-55MM				55		D+4.3	5.25	
3535-60MM				60		18	D+4.4	5.23
3535-64MM				64	D+4.4		4.95	
3535-65MM				65	D+4.4		4.92	
3535-68MM				68	20		D+4.9	4.73
3535-70MM				70		D+4.9	4.5	
3535-72MM				72		D+4.9	4.46	
3535-74MM	74	D+4.9	4.35					
3535-75MM	75	22	D+4.9	4.3				
3535-78MM	78		±0.026	D+5.4	4			
3535-80MM	80			D+5.4	3.85			
3535-85MM	85			D+5.4	3.06			
3535-89MM	89	25		D+5.4	3.06			
3535-90MM	90		D+5.4	2.5				
3535-95MM	95		D+5.4	1.96				

Taper bushing European standard
●3535



Cast iron:GG20

Screw Specification:1/2-12BSW×1-1/2

Transmissible torque: 5060Nm

Bore In Inches

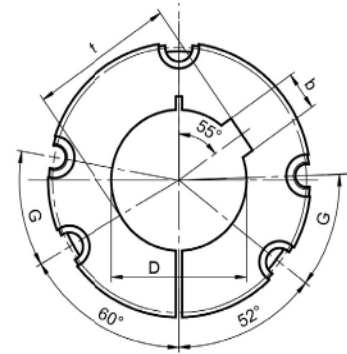
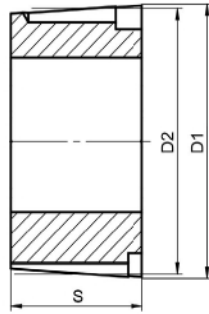
Tools for tighten: Allen wrench 3/8"

Screws Quantity: 3

Screw tightening torque:112Nm

Product Model	D1	D2	S	D (G7)	b	t	Weight [Kg]			
3535-1	4.992"	4.83"	3.5"	1"	1/4"	D+1/8"	6.87			
3535-1-1/8				1 1/8"	5/16"	D+1/8"	6.7			
3535-1-3/16				1-3/16"		D+1/8"	6.5			
3535-1-1/4				1-1/4"		D+1/8"	6.32			
3535-1-3/8				1-3/8"	3/8"	D+1/8"	6.31			
3535-1-7/16				1-7/16"		D+1/8"	6.3			
3535-1-1/2				1-1/2"		D+1/8"	6.28			
3535-1-5/8				1-5/8"	7/16"	D+5/32"	6.15			
3535-1-11/16				1-11/16"		D+5/32"	6.14			
3535-1-3/4				1-3/4"		D+5/32"	6			
3535-1-7/8				1-7/8"	1/2"	D+5/32"	5.88			
3535-1-15/16				1-15/16"		D+5/32"	5.8			
3535-2				2"		D+5/32"	5.78			
3535-2-1/8				4.992"	4.83"	3.5"	2-1/8"	5/8"	D+7/32"	5.58
3535-2-3/16							2-3/16"		D+7/32"	5.49
3535-2-1/4							2-1/4"		D+7/32"	5.38
3535-2-3/8							2-3/8"		D+7/32"	5.21
3535-2-7/16							2-7/16"		D+7/32"	5.12
3535-2-1/2							2-1/2"		D+7/32"	5.02
3535-2-5/8							2-5/8"	3/4"	D+1/4"	4.8
3535-2-11/16							2-11/16"		D+1/4"	4.73
3535-2-3/4							2-3/4"		D+1/4"	4.62
3535-2-7/8							2-7/8"		D+1/4"	4.37
3535-2-15/16							2-15/16"		D+1/4"	4.26
3535-3	3"	D+1/4"	4.09							
3535-3-1/8	3-1/8"	7/8"	3.5"	3-1/8"	D+5/16"	4.08				
3535-3-3/16	3-3/16"			D+5/16"	3.9					
3535-3-1/4	3-1/4"			D+5/16"	3.6					
3535-3-5/16	3-5/16"			D+5/16"	3.46					
3535-3-3/8	3-3/8"			D+5/16"	3.34					
3535-3-7/16	3-7/16"			D+5/16"	3.32					
3535-3-1/2	3-1/2"			D+5/16"	3.03					

4030



Cast iron:GG20

Screw Specification:5/8-11BSW×1-3/4

Transmissible torque: 8740Nm

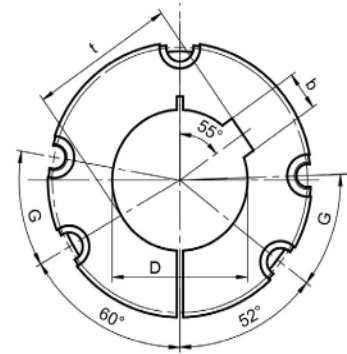
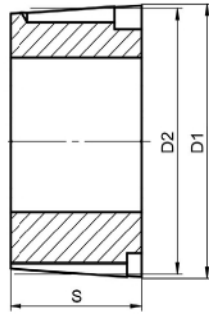
Bore In Metric

Tools for tighten: Allen wrench 1/2"

Screws Quantity: 3

Screw tightening torque:169Nm

Product Model	D1	D2	S	D (G7)	b	Js9	t	Weight (Kg)
4030-40MM	145.85	140.7	76.2	40	12	±0.021	D+3.3	7.47
4030-42MM				42			D+3.3	7.4
4030-45MM				14	45		D+3.8	7.2
4030-48MM					48		D+3.8	7.1
4030-50MM					50		D+3.8	7.03
4030-55MM				16	D+4.3		6.8	
4030-60MM				18	D+4.4	6.6		
4030-65MM					65	D+4.4	6.29	
4030-70MM				±0.026	70	D+4.9	6.1	
4030-75MM					75	D+4.9	5.68	
4030-80MM					22	80	D+5.4	5.38
4030-85MM						85	D+5.4	5.02
4030-90MM					25	90	D+5.4	4.62
4030-95MM						95	D+5.4	4.2
4030-100MM					28	100	D+4.4	3.6
4030-105MM						105	D+6.4	3.36
4030-110MM	110	D+6.4	2.87					
4030-115MM	32	±0.031	D+5.4	2.87				



Cast iron:GG20

Screw Specification:5/8-11BSW×1-3/4

Transmissible torque: 8740Nm

Bore In Inches

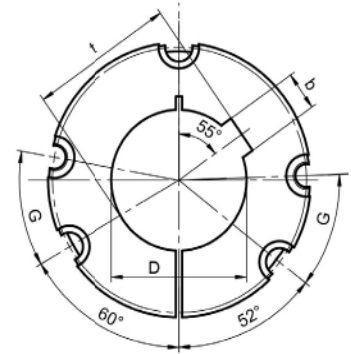
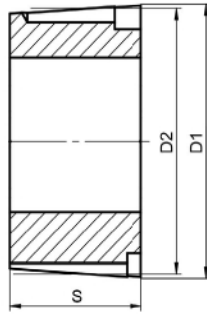
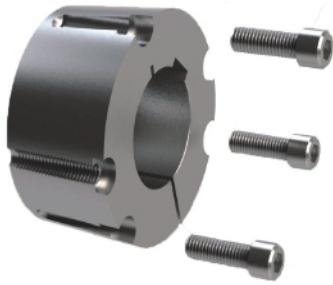
Tools for tighten: Allen wrench 1/2"

Screws Quantity: 3

Screw tightening torque:169Nm

Product Model	D1	D2	S	D (G7)	b	t	Weight (Kg)	
4030-1-1/2	5.742"	5.54"	3"	1-1/2"	3/8"	D+1/8"	8.2	
4030-1-3/4				1-3/4"	7/16"	D+5/32"	7.3	
4030-1-7/8				1-7/8"	1/2"	D+5/32"	7.14	
4030-1-15/16				1-15/16"		D+5/32"	7.05	
4030-2				2"	D+5/32"	7		
4030-2-1/8				5/8"	2-1/8"	D+7/32"	6.82	
4030-2-1/4					2-1/4"	D+7/32"	6.69	
4030-2-3/8					2-3/8"	D+7/32"	6.53	
4030-2-7/16					2-7/16"	D+7/32"	6.7	
4030-2-1/2					2-1/2"	D+7/32"	6.7	
4030-2-5/8					3/4"	2-5/8"	D+1/4"	6.15
4030-2-3/4						2-3/4"	D+1/4"	6.1
4030-2-7/8						2-7/8"	D+1/4"	5.8
4030-3				3"		D+1/4"	5.58	
4030-3-1/8	7/8"	3-1/8"	D+5/16"	5.38				
4030-3-1/4		3-1/4"	D+5/16"	5.14				
4030-3-3/8		3-3/8"	D+5/16"	5				
4030-3-7/16		3-7/16"	D+5/16"	5.08				
4030-3-1/2		3-1/2"	D+5/16"	4.68				
4030-3-3/4		3-3/4"	1"	D+3/8"	4.13			
4030-4	4"	D+3/8"		3.6				

4040



Cast iron:GG20

Screw Specification:5/8-11BSW×1-3/4

Transmissible torque: 8740Nm

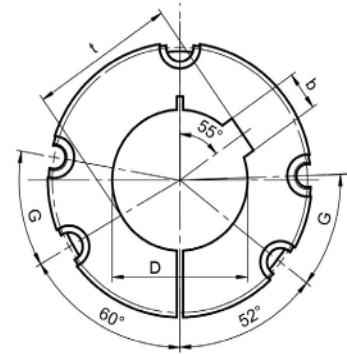
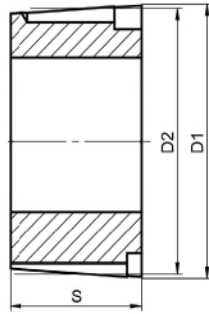
Bore In Metric

Tools for tighten: Allen wrench 1/2"

Screws Quantity: 3

Screw tightening torque:169Nm

Product Model	D1	D2	S	D (G7)	b	Js9	t	Weight (Kg)
4040-26MM	145.85	140.72	101.6	26	8	±0.018	D+3.3	10.05
4040-35MM				35	10		D+3.3	9.86
4040-38MM				38	10		D+3.3	9.78
4040-40MM				12	±0.021	D+3.3	9.62	
4040-42MM							42	D+3.3
4040-45MM				14	±0.021	D+3.8	9.38	
4040-48MM							48	D+3.8
4040-50MM				16	±0.021	D+3.8	9.2	
4040-55MM							55	D+4.3
4040-58MM				18	±0.021	D+4.3	8.6	
4040-60MM							60	D+4.4
4040-65MM				20	±0.026	D+4.4	8.19	
4040-66MM							66	D+4.9
4040-70MM				22	±0.026	D+4.9	7.8	
4040-75MM							75	D+4.9
4040-80M				25	±0.026	D+5.4	6.89	
4040-85MM							85	D+5.4
4040-88MM				28	±0.026	D+5.4	6.46	
4040-90MM							90	D+5.4
4040-95MM				110	±0.026	D+5.4	4.99	
4040-99MM	99	D+6.4	4.99					
4040-100MM	100	D+4.4	4.85					
4040-105MM	105	±0.026	D+6.4	4.26				
4040-110MM				110	D+6.4	3.64		



Cast iron:GG20

Screw Specification:5/8-11BSW×1-3/4

Transmissible torque: 8740Nm

Bore In Inches

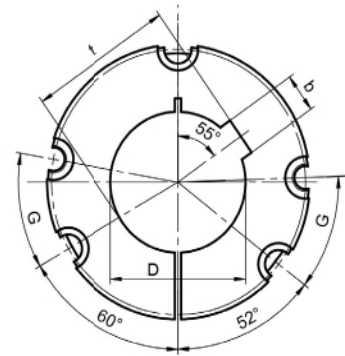
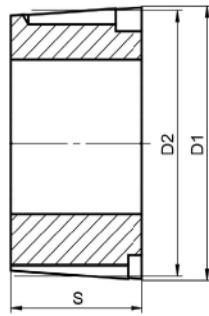
Tools for tighten: Allen wrench 1/2"

Screws Quantity: 3

Screw tightening torque:169Nm

Product Model	D1	D2	S	D (G7)	b	t	Weight [Kg]
4040-1-3/4	5.742"	5.54"	4"	1-3/4"	7/16"	D+5/32"	9.44
4040-1-7/8				1-7/8"	1/2"	D+5/32"	9.28
4040-2				2"	D+5/32"	9.12	
4040-2-1/8				2-1/8"	5/8"	D+7/32"	8.9
4040-2-3/16				2-3/16"		D+7/32"	8.78
4040-2-1/4				2-1/4"		D+7/32"	8.68
4040-2-3/8				2-3/8"		D+7/32"	8.68
4040-2-7/16				2-7/16"		D+7/32"	8.66
4040-2-1/2				2-1/2"		D+7/32"	8.5
4040-2-5/8				3/4"	2-5/8"	D+1/4"	8.29
4040-2-3/4					2-3/4"	D+1/4"	7.72
4040-2-7/8					2-7/8"	D+1/4"	7.54
4040-2-15/16					2-15/16"	D+1/4"	7.5
4040-3					3"	D+1/4"	7.27
4040-3-1/8					3-1/8"	7/8"	D+5/16"
4040-3-1/4				3-1/4"	D+5/16"		6.66
4040-3-3/8				3-3/8"	D+5/16"		6.66
4040-3-7/16				3-7/16"	D+5/16"		6.48
4040-3-1/2				3-1/2"	D+5/16"		6.48
4040-3-11/16				3-11/16"	1"		D+3/8"
4040-3-5/8	3-5/8"	D+3/8"	5.66				
4040-3-3/4	3-3/4"	D+3/8"	5.5				
4040-3-7/8	3-7/8"	D+3/8"	5.26				
4040-3-15/16	3-15/16"	D+3/8"	4.8				
4040-4	4"	D+3/8"	4.6				

4535



Cast iron:GG20

Screw Specification:3/4-10BSW×2

Transmissible torque: 12400Nm

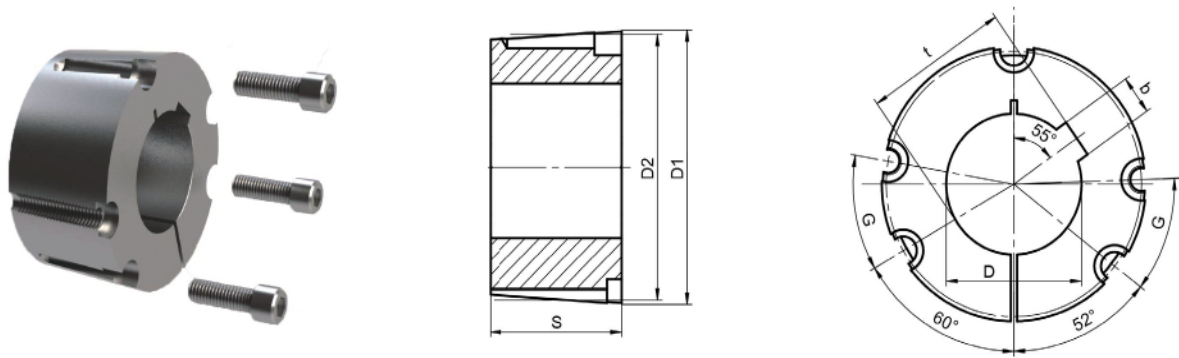
Bore In Metric

Tools for tighten: Allen wrench 9/16"

Screws Quantity: 3

Screw tightening torque:192Nm

Product Model	D1	D2	S	D (G7)	b	Js9	t	Weight (Kg)
4535-28MM	161.72	155.7	89	28	8	±0.018	D+3.3	11.06
4535-40MM				40	12	±0.021	D+3.3	10.78
4535-48MM				48	14		D+3.8	10.26
4535-50MM				50	14		D+3.8	10.05
4535-55MM				55	16		D+4.3	9.94
4535-60MM				60	18		D+4.4	9.62
4535-65MM				65	18		D+4.4	9.38
4535-70MM				70	20	±0.026	D+4.9	9.04
4535-75MM				75	20		D+4.9	8.64
4535-80MM				80	22		D+5.4	8.64
4535-85MM				85	22		D+5.4	7.46
4535-90MM				90	25		D+5.4	7.46
4535-95MM				95	25		D+5.4	6.95
4535-100MM				100	28	±0.031	D+6.4	6.48
4535-105MM				105	28		D+6.4	6.48
4535-110MM				110	28		D+6.4	5.8
4535-115MM				115	32		D+7.4	4.81
4535-120MM				120	32		D+7.4	4.24
4535-125MM	125	32	D+7.4	3.67				



Cast iron:GG20

Screw Specification:3/4-10BSW×2

Transmissible torque: 12400Nm

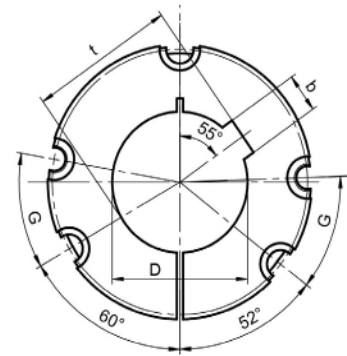
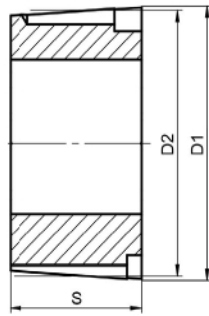
Bore In Inches

Tools for tighten: Allen wrench 9/16"

Screws Quantity: 3

Screw tightening torque:192Nm

Product Model	D1	D2	S	D (G7)	b	t	Weight (Kg)	
4535-2-3/16	6.367"	6.13"	3.5"	2-3/16"	5/8"	D+7/32"	10.5	
4535-2-1/4				2-1/4"		D+7/32"	9.74	
4535-2-3/8				2-3/8"		D+7/32"	9.68	
4535-2-1/2				2-1/2"		D+7/32"	9.41	
4535-2-5/8				2-5/8"	3/4"	D+1/4"	9.21	
4535-2-11/16				2-11/16"		D+1/4"	9.05	
4535-2-3/4				2-3/4"		D+1/4"	8.97	
4535-2-7/8				2-7/8"		D+1/4"	8.79	
4535-3				3"	D+1/4"	8.51		
4535-3-1/8				7/8"	3-1/8"	D+5/16"	8.26	
4535-3-1/4					3-1/4"		D+5/16"	8.02
4535-3-3/8					3-3/8"		D+5/16"	7.79
4535-3-1/2					3-1/2"		D+5/16"	7.48
4535-3-5/8					3-5/8"	1"	D+3/8"	7.19
4535-3-3/4					3-3/4"		D+3/8"	6.9
4535-3-7/8					3-7/8"		D+3/8"	6.7
4535-4	4"	D+3/8"	6.29					
4535-4-1/4	4-1/4"	1 1/4"	D+7/16"	5.52				
4535-4-1/2	4-1/2"		D+7/16"	4.82				
4535-4-3/4	4-3/4"		D+3/8"	4.08				



Cast iron:GG20

Screw Specification:3/4-10BSW×2

Transmissible torque: 12400Nm

Bore In Inches

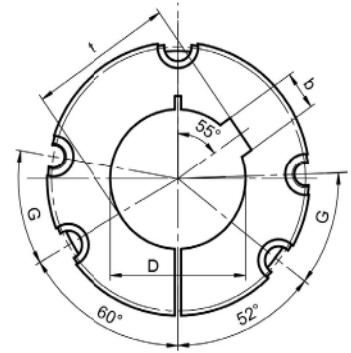
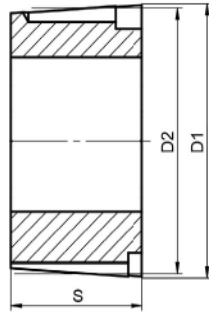
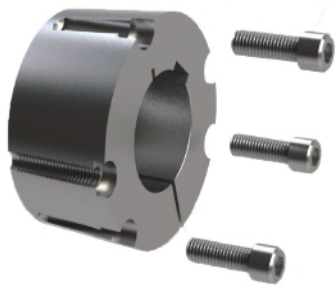
Tools for tighten: Allen wrench 9/16"

Screws Quantity: 3

Screw tightening torque:192Nm

Product Model	D1	D2	S	D (G7)	b	t	Weight (Kg)			
4545-2	6.367"	6.13"	4.5"	2"	1/2"	D+5/32"	13.4			
4545-2-1/8				2-1/8"	5/8"	D+7/32"	13.1			
4545-2-3/16				2-3/16"			12.75			
4545-2-1/4				2-1/4"			12.42			
4545-2-5/16				2-5/16"			12.85			
4545-2-7/16				2-7/16"			11.96			
4545-2-1/2				2-1/2"			11.8			
4545-2-11/16				2-11/16"	3/4"	D+1/4"	12.01			
4545-2-3/4				2-3/4"			12.01			
4545-2-5/8				2-5/8"			11.6			
4545-2-7/8				2-7/8"			11.5			
4545-2-15/16				2-15/16"			11.42			
4545-3				3"	10.74					
4545-3-3/16				6.367"	6.13"	4.5"	3-3/16"	7/8"	D+5/16"	10.44
4545-3-1/4							3-1/4"			10.1
4545-3-3/8							3-3/8"			9.7
4545-3-7/16							3-7/16"			9.6
4545-3-1/2							3-1/2"			9.48
4545-3-5/8							3-5/8"	1"	D+3/8"	9.47
4545-3-3/4							3-3/4"			8.66
4545-3-7/8	3-7/8"	8.31								
4545-3-15/16	3-15/16"	7.9								
4545-4	4"	7.88								
4545-4-1/8	6.367"	6.13"	4.5"	4-1/8"	1 1/4"	D+7/16"	7.76			
4545-4-1/4				4-1/4"			6.9			
4545-4-3/8				4-3/8"			6.64			
4545-4-7/16				4-7/16"			6.2			
4545-4-1/2				4-1/2"			5.98			

5040



Cast iron:GG20

Screw Specification:7/8-9BSW×2-1/4

Transmissible torque: 14200Nm

Bore In Metric

Tools for tighten: Allen wrench 3/4"

Screws Quantity: 3

Screw tightening torque:271Nm

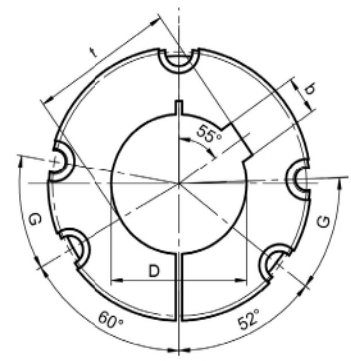
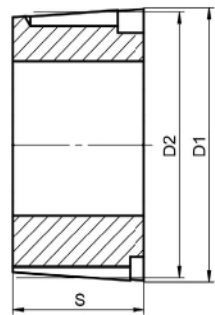
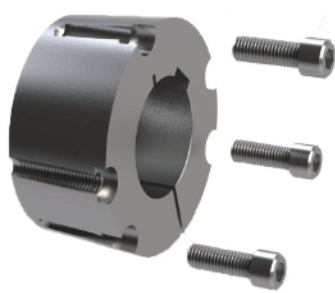
Product Model	D1	D2	S	D (G7)	b	Js9	t	Weight (Kg)
5040-50MM	177.6	170.69	101.6	50	14	±0.021	D+3.8	14.9
5040-55MM				55	16		D+4.3	14.7
5040-60MM				60	18		D+4.4	14.55
5040-65MM				65			D+4.4	14.3
5040-70MM				70	20	D+4.9	12.85	
5040-75MM				75		D+4.9	12.42	
5040-80MM				80	22	D+5.4	11.9	
5040-85MM				85		D+5.4	11.55	
5040-90MM				90	25	D+5.4	11.06	
5040-95MM				95		D+5.4	10.48	
5040-100MM				100	28	D+6.4	9.32	
5040-105MM				105		D+6.4	9.28	
5040-110MM				110	32	D+6.4	8.72	
5040-115MM				115		D+7.4	8.72	
5040-120MM				120	±0.031	D+7.4	7.37	
5040-125MM				125		D+7.4	6.71	
5040-130MM	130	D+7.4	5.94					

Bore In Inches

Product Model	D1	D2	S	D (G7)	b	t	Weight (Kg)
5040-2-3/4	6.992"	6.72"	4"	2-3/4"	3/4"	D+1/4"	12.8
5040-3				3"		D+1/4"	12.32
5040-3-1/8				3-1/8"	7/8"	D+5/16"	11.99
5040-3-1/4				3-1/4"		D+5/16"	11.75
5040-3-3/8				3-3/8"		D+5/16"	11.41
5040-3-1/2				3-1/2"		D+5/16"	11.14
5040-3-3/4				3-3/4"	1"	D+3/8"	10.37
5040-4				4"		D+3/8"	9.68
5040-4-1/4				4-1/4"	1 1/4"	D+7/16"	8.87
5040-4-1/2				4-1/2"		D+7/16"	8.03
5040-4-3/4				4-3/4"		D+7/16"	7.19
5040-5				5"		D+7/16"	6.31

5050

Taper bushing European standard
 ● 5040
 ● 5050



Cast iron:GG20

Screw Specification:7/8-9BSW×2-1/4

Transmissible torque: 14200Nm

Bore In Metric

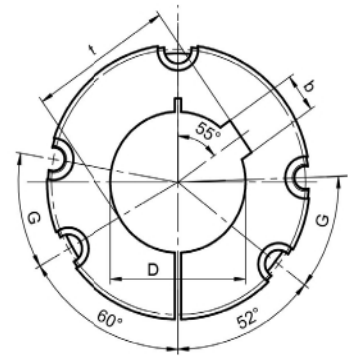
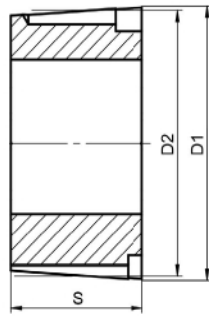
Tools for tighten: Allen wrench 3/4"

Screws Quantity: 3

Screw tightening torque:271Nm

Product Model	D1	D2	S	D (G7)	b	Js9	t	Weight (Kg)
5050-30MM	177.6	170.69	127	30	8	±0.018	D+3.3	18.74
5050-40MM				40	12	±0.021	D+3.3	18.24
5050-48MM				48	14		D+3.8	17.65
5050-50MM				50	14		D+3.8	17.46
5050-55MM				55	16		D+4.3	17.2
5050-60MM				60	18	±0.026	D+4.4	17.58
5050-65MM				65	18		D+4.4	16.2
5050-70MM				70	20	±0.026	D+4.9	15.86
5050-75MM				75	20		D+4.9	15.33
5050-80MM				80	22	±0.026	D+5.4	14.72
5050-85MM				85	22		D+5.4	14.18
5050-88MM				88	25	±0.026	D+5.4	13.78
5050-90MM				90	25		D+5.4	13.54
5050-95MM				95	28	±0.026	D+5.4	12.92
5050-98MM				98	28		D+6.4	12.54
5050-100MM				100	28	±0.031	D+6.4	12.15
5050-102MM				102	28		D+6.4	11.86
5050-105MM				105	32	±0.031	D+6.4	11.42
5050-109MM				109	32		D+6.4	10.82
5050-110MM				110	32	±0.031	D+6.4	10.66
5050-115MM	115	32	D+7.4	9.81				
5050-120MM	120	32	±0.031	D+7.4	8.98			
5050-125MM	125	32		D+7.4	8.95			
5050-127MM	127	32	±0.031	D+7.4	7.75			
5050-130MM	130	32		D+7.4	7.21			

5050



Cast iron:GG20

Screw Specification:7/8-9BSW×2-1/4

Transmissible torque: 14200Nm

Bore In Inches

Tools for tighten: Allen wrench 3/4"

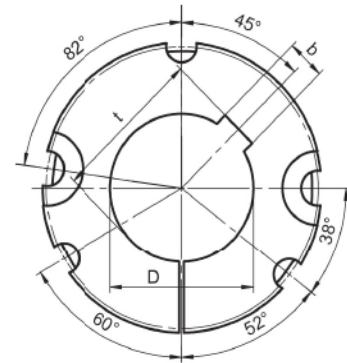
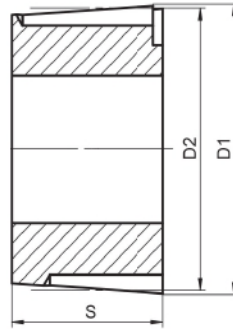
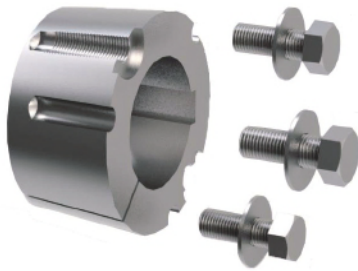
Screws Quantity: 3

Screw tightening torque:271Nm

Product Model	D1	D2	S	D (G7)	b	t	Weight (Kg)
5050-2-7/16	6.992"	6.72"	5"	2-7/16"	5/8"	D+7/32"	16.34
5050-2-3/4				3/4"	D+1/4"	15.7	
5050-2-7/8					D+1/4"	15.45	
5050-2-15/16					D+1/4"	15.35	
5050-3					D+1/4"	15.08	
5050-3-1/8				7/8"	D+5/16"	14.73	
5050-3-3/16					D+5/16"	14.6	
5050-3-1/4					D+5/16"	14.34	
5050-3-3/8					D+5/16"	14.06	
5050-3-1/2					D+5/16"	13.39	
5050-3-5/8					1"	D+3/8"	13.26
5050-3-3/4				D+3/8"		12.77	
5050-3-7/8				D+3/8"		12.32	
5050-3-15/16				D+3/8"		12.01	
5050-4				1 1/4"	D+3/8"	11.9	
5050-4-1/4					D+7/16"	11.84	
5050-4-3/8					D+7/16"	10.84	
5050-4-7/16					D+7/16"	10.8	
5050-4-1/2					D+7/16"	9.88	
5050-4-5/8					D+7/16"	9.3	
5050-4-3/4	D+7/16"	8.8					
5050-5	D+7/16"	7.64					

6050

Taper bushing European standard
 ● 5050
 ● 6050



Cast iron:GG20

Screw Specification:1-1/4-7BSW×3-1/2

Transmissible torque: 31870Nm

Screws Quantity: 3

Screw tightening torque:880Nm

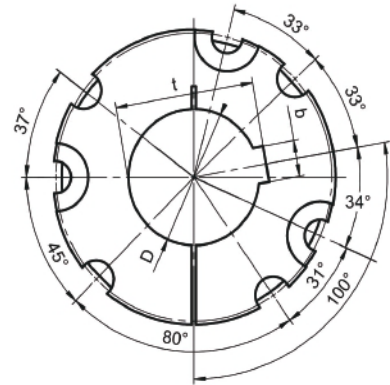
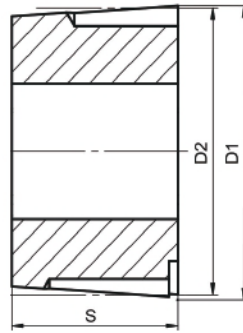
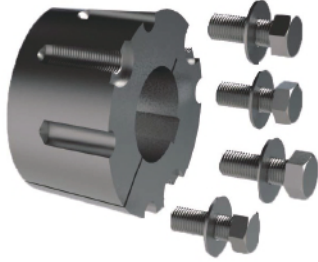
Bore In Metric

Product Model	D1	D2	S	D (G7)	b	Js9	t	Weight (Kg)
6050-95MM	235	228.5	127	95	25	±0.026	D+5.4	28.3
6050-140MM				140	36	±0.031	D+8.4	20.65

Bore In Inches

Product Model	D1	D2	S	D (G7)	b	t	Weight (Kg)
6050-4	9.252"	8.996"	5"	4"	1"	D+3/8"	30.1
6050-4-7/8				4-7/8	1 1/4"	D+7/16"	26.4
6050-5				5"	D+7/16"	23	
6050-5-1/2				5-1/2"	D+1/2"	22.6	
6050-6				6"	D+1/2"	18	

7060



Cast iron:GG20

Screw Specification:1-1/4-7BSW×3-1/2

Transmissible torque: 47015Nm

Screws Quantity: 4

Screw tightening torque:880Nm

Bore In Metric

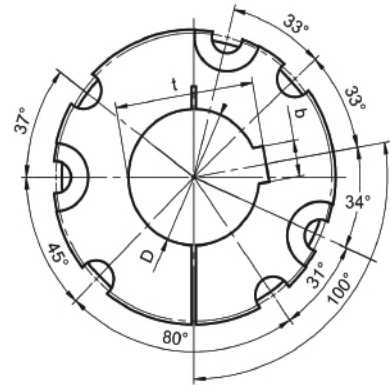
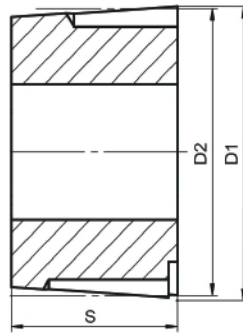
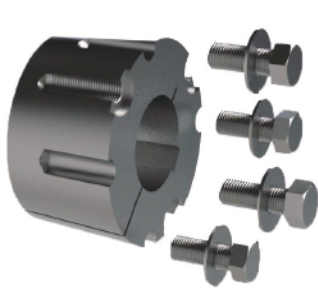
Product Model	D1	D2	S	D (G7)	b	Js9	t	Weight (Kg)
7060-100MM	260.4	254	152.4	100	28	±0.026	D+6.4	45.82
7060-110MM				110	28		D+6.4	44.2
7060-120MM				120	32	±0.031	D+7.4	42.51
7060-127MM				127	32		D+7.4	40.57
7060-130MM				130	32		D+7.4	38.8
7060-140MM				140	36		D+8.4	38
7060-165MM				165	40		D+9.4	31.1
7060-175MM				175	45		D+10.4	27.26
7060-180MM				180	45	D+10.4	26.68	

Bore In Inches

Product Model	D1	D2	S	D (G7)	b	t	Weight (Kg)
7060-4-15/16	10.252"	10"	6"	4-15/16"	1 1/4"	D+7/16"	36.91
7060-7				7"	1 3/4"	D+5/8"	23.21

8065

Taper bushing European standard
 • 7060
 • 8065



Cast iron:GG20

Screw Specification:1-1/4-7BSW×3-1/2

Transmissible torque: 51535Nm

Screws Quantity: 4

Screw tightening torque:880Nm

Bore In Metric

Product Model	D1	D2	S	D (G7)	b	Js9	t	Weight (Kg)
8065-125MM	285.8	279.4	165.1	125	32	±0.031	D+7.4	52.8
8065-150MM				150	36		D+8.4	49.82
8065-180MM				180	45		D+10.4	37.04
8065-200MM				200			D+10.4	31

Bore In Inches

Product Model	D1	D2	S	D (G7)	b	t	Weight (Kg)
8065-7-1/2	11.252"	11"	6.5"	4-15/16"	1 1/4"	D+7/16"	36.91

AUTHORIZED DISTRIBUTOR :



MOTION POWER AND SERVICES CO., LTD (RAYONG BRANCH)

TEL +66 38016999

🌐 www.motion.co.th ✉ sales9@motion.co.th
sales10@motion.co.th



MOTION POWER CO.,LTD (KORAT BRANCH)

TEL +66 44756092

🌐 www.motion.co.th ✉ sales3.mpk@motion.co.th
sales5.mpk@motion.co.th



RPM POWER TRANSMISSION CO., LTD

TEL +66 38212272

✉ sales@rpmpowertrans.com

