

## UNITED SALES CO.,LTD. ( LOGISTICS THAILAND )

United Sales Co., Ltd. provides comprehensive logistics services. To exporters - importers under the policy of "the best quality of service", customers will receive full service and care. With maximum efficiency The company is ready to serve customers. And ready to develop logistics services. In Thailand perfect

### Management principles

- Management of every job. To complete the task on a specified date.
- Have a meeting, plan and acknowledge daily problems.
- Have good relationship with many agencies for fast service. And solve the problem quickly.
- -Friendly service based on universal principles.



### Service

- Customs Broker
- Freight Forwarder/ Air Freight Services / Sea Freight Service
- Domestic transportation services include 10-wheel, 6-wheel, 4-wheel trucks.
- Tax Return Services, Litigation Ceremony
- Customs Clearance Service By negotiation.
- Logistics, International Trade and Insurance (Free)
- International import and export agent
- Packages of all sizes.
- Large Machine Transfer Service



# PORTFOLIO WORKS



# PORTFOLIO WORKS



# PORTFOLIO WORKS



# SIZE CONTAINER

**40'**

**40' GP**



	L	W	H
External	40'0" 12.19m	8'0" 2.44m	8'6" 2.59m
Internal	39'6" 12.03m	7'8" 2.35m	7'1" 2.39m
Door Opening	39'6" 12.03m	7'8" 2.35m	7'6" 2.28m
Max Capacity	2390-2397 (cu ft) 58820-60740 (lbs) 67.7-37.80 (m) 28860-27550 (kgs)		
Tare Weights	6460-8380 (lbs) 2390-3800 (kgs)		

**40' HQ**



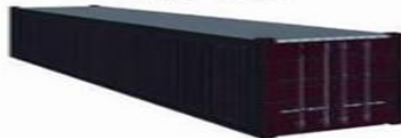
	L	W	H
External	40'0" 12.19m	8'0" 2.44m	9'6" 2.91m
Internal	39'6" 12.03m	7'8" 2.35m	8'10" 2.71m
Min. Door Opening	39'6" 12.03m	7'8" 2.35m	8'6" 2.59m
Max Capacity	2700-2715 (cu ft) 58970-60400 (lbs) 76.40-76.88 (m) 27650-27400 (kgs)		
Tare Weights	6800-8230 (lbs) 3080-3730 (kgs)		

**40' DD**



	L	W	H
External	40'0" 12.19m	8'0" 2.44m	8'6" 2.59m
Internal	39'6" 12.03m	7'8" 2.35m	7'10" 2.39m
Door Opening	39'6" 12.03m	7'8" 2.35m	7'6" 2.28m
Max Capacity	2390-2397 (cu ft) 58820-60740 (lbs) 67.7-37.80 (m) 28860-27550 (kgs)		
Tare Weights	6460-8380 (lbs) 2930-3800 (kgs)		

**40' OT**



	L	W	H
External	40'0" 12.19m	8'0" 2.44m	8'6" 2.59m
Internal	39'5" 12.02m	7'8" 2.33m	7'9" 2.38m
Door Opening			
Max Capacity	2295 (cu ft) 58490 (lbs) 65 (m) 26530 (kgs)		
Tare Weights	8050 (lbs) 3650 (kgs)		

**40' RF**



	L	W	H
External	40'0" 12.19m	8'0" 2.44m	8'6" 2.59m
Internal	37'8" 11.48m	7'4" 2.24m	7'1" 2.18m
Door Opening	37'8" 11.48m	7'4" 2.24m	7'0" 2.13m
Max Capacity	1963-2055 (cu ft) 56990-58180 (lbs) 55.60-59.29 (m) 25850-26390 (kgs)		
Tare Weights	9020-10210 (lbs) 4090-4630 (kgs)		

**40' FR**



	L	W	H
External	40'0" 12.19m	8'0" 2.44m	8'6" 2.59m
Internal	39'5" 12.01m	7'7" 2.31m	6'6" 1.98m
Min. Door Opening			
Max Capacity	56188 (lbs) 25485 (kgs)		
Tare Weights	11012 (lbs) 4995 (kgs)		

## 40' Container

# SIZE CONTAINER

20'

20' GP



	L	W	H
External	20'0"	8'0"	8'6"
	6.10m	2.44m	2.59m
Internal	19'4"	7'8"	7'9"
	5.90m	2.34m	2.38m
Door Opening	19'4"	7'8"	7'6"
	5.90m	2.34m	2.27m
Max.Capacity	1158-1186 (cu ft) 39380-47880 (lbs)		
	32.85-33.58 (m) 17860-21700 (kgs)		
Tare Weights	5030-5490 (lbs)		
	2280-2490 (kgs)		

20' HQ



	L	W	H
External	20'0"	8'0"	9'6"
	6.10m	2.44m	2.91m
Internal	19'4"	7'8"	8'10"
	5.90m	2.34m	2.71m
Door Opening	19'4"	7'8"	8'6"
	5.90m	2.34m	2.59m
Max.Capacity	1350-1390 (cu ft) 39380-47880 (lbs)		
	38.23-39.36 (m) 17860-21700 (kgs)		
Tare Weights	5350-5550 (lbs)		
	2427-2495 (kgs)		

20' DD



	L	W	H
External	20'0"	8'0"	8'6"
	6.10m	2.44m	2.59m
Internal	19'4"	7'8"	7'9"
	5.90m	2.34m	2.38m
Door Opening	19'4"	7'8"	7'6"
	5.90m	2.34m	2.27m
Max.Capacity	1158-1186 (cu ft) 39380-47880 (lbs)		
	32.85-33.58 (m) 17860-21700 (kgs)		
Tare Weights	5030-5490 (lbs)		
	2280-2490 (kgs)		

20' Side Open



	L	W	H
External	20'0"	8'0"	8'6"
	6.10m	2.44m	2.59m
Internal	19'4"	7'8"	7'9"
	5.90m	2.34m	2.38m
Door Opening	19'4"	7'8"	7'6"
	5.90m	2.34m	2.27m
Max.Capacity	1158-1186 (cu ft) 39380-47880 (lbs)		
	32.85-33.58 (m) 17860-21700 (kgs)		
Tare Weights	5030-5490 (lbs)		
	2280-2490 (kgs)		

20' OT



	L	W	H
External	20'0"	8'0"	8'6"
	6.10m	2.44m	2.59m
Internal	19'4"	7'8"	7'9"
	5.90m	2.34m	2.38m
Door Opening			
Max.Capacity	1158-1186 (cu ft) 48280-62240 (lbs)		
	32.85-33.58 (m) 21900-28230 (kgs)		
Tare Weights	4630-4960 (lbs)		
	2100-2250 (kgs)		

20' FR



	L	W	H
External	20'0"	8'0"	8'6"
	6.10m	2.44m	2.59m
Internal	18'1"-19'6"	8'0"	7'1"-7'7"
	5.51-5.94m	2.44m	2.16-2.31m
Door Opening			
Max.Capacity	46910-39900 (lbs)		
	21280-30005 (kgs)		
Tare Weights	4850-6000 (lbs)		
	2200-2720 (kgs)		

20' RF



	L	W	H
External	20'0"	8'0"	8'6"
	6.10 m	2.44m	2.59m
Internal	17'6"	7'2"	7'4"
	5.34 m	2.20m	2.25m
Door Opening	17'6"	7'3"	7'3"
	5.34 m	2.21m	2.21m
Max.Capacity	932-1003 (cu ft) 45460-60450 (lbs)		
	26.4-28.4 (m) 20620-27420 (kgs)		
Tare Weights	6750-7450 (lbs)		
	3060-3380 (kgs)		

20' Container

# TRUCK SIZE



Four wheel drive



Big 4 wheel truck



6 wheel truck



Truck crane



Truck with rear axle



Truck head