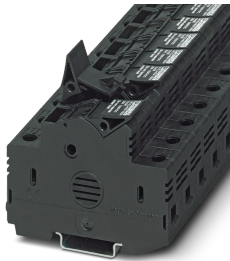


## Fuse modular terminal block - UK 10,3-HESI 1000V - 3211236

Please be informed that the data shown in this PDF Document is generated from our Online Catalog. Please find the complete data in the user's documentation. Our General Terms of Use for Downloads are valid (<http://phoenixcontact.com/download>)



Fuse modular terminal block, fuse type: Glass / ceramics / ..., fuse type: 10:3 x 38 mm, nom. voltage: 1000 V, nominal current: 30 A, connection method: Screw connection, Rated cross section: 16 mm<sup>2</sup>, cross section: 1.5 mm<sup>2</sup>- 25 mm<sup>2</sup>, mounting type: NS 35/7,5, NS 35/15, color: black


The figure shows a version of the article

### Your advantages

- Fuse holder for fusing PV strings 1000 V DC
- Easy to bridge
- For 10 x 38 gPV fuse-links in accordance with IEC 60269-6



### Key Commercial Data

Packing unit	1 pc
Minimum order quantity	10 pc
GTIN	 4 046356 482394
GTIN	4046356482394
Weight per Piece (excluding packing)	52.000 g
Custom tariff number	85369095
Country of origin	Germany

### Technical data

#### General

Number of rows	1
Number of connections	2
Nominal cross section	25 mm <sup>2</sup>
Color	black

# Fuse modular terminal block - UK 10,3-HESI 1000V - 3211236

## Technical data

### General

Flammability rating according to UL 94	V2
Maximum power dissipation for nominal condition	3.26 W
Rated surge voltage	6 kV
Degree of pollution	3
Overvoltage category	II
Insulating material group	IIIa
Connection in acc. with standard	IEC 60269-1 / -2
Maximum load current	30 A (the current and voltage are determined by the fuse)
Nominal current $I_N$	30 A (the current and voltage are determined by the fuse)
Nominal voltage $U_N$	1000 V DC (the current and voltage are determined by the fuse)
Fuse	10:3 x 38 mm
Fuse type	Glass / ceramics / ...
Open side panel	No
Shock protection test specification	DIN EN 50274 (VDE 0660-514):2002-11
Back of the hand protection	guaranteed
Finger protection	guaranteed
Note	Do not open under load.
Result of surge voltage test	Test passed
Result of power-frequency withstand voltage test	Test passed
Result of tight fit on support	Test passed
Contact resistance	Test passed
Result of the test for mechanical stability of terminal points (5 x conductor connection)	Test passed
Result of thermal test	Test passed
Relative insulation material temperature index (Elec., UL 746 B)	125 °C

### Dimensions

Width	18 mm
Length	81 mm
Height NS 35/7,5	65.5 mm
Height NS 35/15	73 mm

### Connection data

Conductor cross section solid min.	1.5 mm <sup>2</sup>
Conductor cross section solid max.	25 mm <sup>2</sup>
Conductor cross section flexible min.	0.75 mm <sup>2</sup>
Conductor cross section flexible max.	25 mm <sup>2</sup>
Conductor cross section AWG min.	16
Conductor cross section AWG max.	3

## Fuse modular terminal block - UK 10,3-HESI 1000V - 3211236

### Technical data

#### Connection data

Conductor cross section flexible, with ferrule without plastic sleeve min.	1.5 mm <sup>2</sup>
Conductor cross section flexible, with ferrule without plastic sleeve max.	16 mm <sup>2</sup>
Conductor cross section flexible, with ferrule with plastic sleeve min.	1.5 mm <sup>2</sup>
Conductor cross section flexible, with ferrule with plastic sleeve max.	16 mm <sup>2</sup>
Cross section with insertion bridge, solid max.	10 mm <sup>2</sup>
Cross section with insertion bridge, stranded max.	10 mm <sup>2</sup>
2 conductors with same cross section, solid min.	1.5 mm <sup>2</sup>
2 conductors with same cross section, solid max.	4 mm <sup>2</sup>
2 conductors with same cross section, stranded min.	0.75 mm <sup>2</sup>
2 conductors with same cross section, stranded max.	10 mm <sup>2</sup>
Two conductors with the same cross section stranded, with ferrule and without plastic sleeve, minimum	1.5 mm <sup>2</sup>
Two conductors with the same cross section stranded, with ferrule and without plastic sleeve, maximum	4 mm <sup>2</sup>
Two conductors with the same cross section, flexible, with TWIN ferrules, with plastic sleeve, minimum	1.5 mm <sup>2</sup>
Two conductors with the same cross section, flexible, with TWIN ferrules, with plastic sleeve, maximum	10 mm <sup>2</sup>
Cross section with insertion bridge, solid max.	10 mm <sup>2</sup>
Cross section with insertion bridge, stranded max.	10 mm <sup>2</sup>
Connection method	Screw connection
Stripping length	11 mm
Internal cylindrical gage	A7
Screw thread	M5
Tightening torque, min	2 Nm
Tightening torque max	2.5 Nm

#### Ambient conditions

Operating temperature	-60 °C ... 85 °C
Ambient temperature (storage/transport)	-25 °C ... 55 °C (for a short time, not exceeding 24 h, -60 °C to +70 °C)
Permissible humidity (storage/transport)	30 % ... 70 %
Ambient temperature (assembly)	-5 °C ... 70 °C
Ambient temperature (actuation)	-5 °C ... 70 °C

#### Standards and Regulations

Connection in acc. with standard	IEC 60269-1 / -2
----------------------------------	------------------

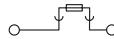
#### Environmental Product Compliance

China RoHS	Environmentally friendly use period: unlimited = EFUP-e
	No hazardous substances above threshold values

# Fuse modular terminal block - UK 10,3-HESI 1000V - 3211236

## Drawings

### Circuit diagram



## Classifications

### eCl@ss

eCl@ss 10.0.1	27141116
eCl@ss 11.0	27141116
eCl@ss 4.0	27141100
eCl@ss 4.1	27141100
eCl@ss 5.0	27141100
eCl@ss 5.1	27141100
eCl@ss 6.0	27141100
eCl@ss 7.0	27141116
eCl@ss 9.0	27141116

### ETIM

ETIM 2.0	EC000897
ETIM 3.0	EC000899
ETIM 4.0	EC000899
ETIM 6.0	EC000899
ETIM 7.0	EC000899

### UNSPSC

UNSPSC 6.01	30211811
UNSPSC 7.0901	39121410
UNSPSC 11	39121410
UNSPSC 12.01	39121410
UNSPSC 13.2	39121410
UNSPSC 18.0	39121410
UNSPSC 19.0	39121410
UNSPSC 20.0	39121410
UNSPSC 21.0	39121410

## Approvals

### Approvals

---

# Fuse modular terminal block - UK 10,3-HESI 1000V - 3211236

## Approvals

Approvals

UL Listed / EAC / EAC / CSA

Ex Approvals

## Approval details

UL Listed		<a href="http://database.ul.com/cgi-bin/XYV/template/LISEXT/1FRAME/index.htm">http://database.ul.com/cgi-bin/XYV/template/LISEXT/1FRAME/index.htm</a>	FILE E 353282
Nominal voltage UN		1000 V	
Nominal current IN		30 A	
mm <sup>2</sup> /AWG/kcmil		18-8	

EAC			RU C- DE.A*30.B.01742
-----	--	--	--------------------------

EAC			RU C- DE.BL08.B.00534
-----	--	--	--------------------------

CSA		<a href="http://www.csagroup.org/services-industries/product-listing/">http://www.csagroup.org/services-industries/product-listing/</a>	225908
Nominal voltage UN		1000 V	
Nominal current IN		30 A	
mm <sup>2</sup> /AWG/kcmil		18-8	

## Accessories

Accessories

Connector

## Fuse modular terminal block - UK 10,3-HESI 1000V - 3211236

### Accessories

Connection pin - VS-UK 10,3-HESI N 2POL - 3048532



Connection pin, plastic, for coupling two fuse terminal blocks, color: white, diameter: 3 mm

---

Connection pin - VS-UK 10,3-HESI N 3POL - 3048409



Connection pin, plastic, for coupling three fuse terminal blocks, color: white, diameter: 3 mm

---

### DIN rail

DIN rail perforated - NS 35/ 7,5 PERF 2000MM - 0801733



DIN rail perforated, acc. to EN 60715, material: Steel, galvanized, passivated with a thick layer, Standard profile, color: silver, Pack of 25 (50 m)

---

DIN rail, unperforated - NS 35/ 7,5 UNPERF 2000MM - 0801681



DIN rail, unperforated, acc. to EN 60715, material: Steel, galvanized, passivated with a thick layer, Standard profile, color: silver, Pack of 25 (50 m)

---

DIN rail perforated - NS 35/ 7,5 WH PERF 2000MM - 1204119



DIN rail perforated, acc. to EN 60715, material: Steel, Galvanized, white passivated, Standard profile, color: silver, Pack of 25 (50 m)

---

## Fuse modular terminal block - UK 10,3-HESI 1000V - 3211236

### Accessories

DIN rail, unperforated - NS 35/ 7,5 WH UNPERF 2000MM-VPE 10 - 1204122



DIN rail, unperforated, acc. to EN 60715, material: Steel, Galvanized, white passivated, Standard profile, color: silver, Pack of 25 (50 m)

---

DIN rail, unperforated - NS 35/ 7,5 AL UNPERF 2000MM - 0801704



DIN rail, unperforated, acc. to EN 60715, material: Aluminum, uncoated, Standard profile, color: silver, Pack of 25 (50 m)

---

DIN rail perforated - NS 35/ 7,5 ZN PERF 2000MM - 1206421



DIN rail perforated, acc. to EN 60715, material: Steel, galvanized, Standard profile, color: silver, Pack of 25 (50 m)

---

DIN rail, unperforated - NS 35/ 7,5 ZN UNPERF 2000MM - 1206434



DIN rail, unperforated, acc. to EN 60715, material: Steel, galvanized, Standard profile, color: silver, Pack of 25 (50 m)

---

DIN rail, unperforated - NS 35/ 7,5 CU UNPERF 2000MM-VPE 10 - 0801762



DIN rail, unperforated, acc. to EN 60715, material: Copper, uncoated, Standard profile, color: copper-colored, Pack of 10 (20 m)

---

## Fuse modular terminal block - UK 10,3-HESI 1000V - 3211236

### Accessories

End cap - NS 35/ 7,5 CAP - 1206560



DIN rail end piece, for DIN rail NS 35/7.5

---

DIN rail perforated - NS 35/15 PERF 2000MM - 1201730



DIN rail perforated, similar to EN 60715, material: Steel, galvanized, passivated with a thick layer, Standard profile, color: silver, Pack of 25 (50 m)

---

DIN rail, unperforated - NS 35/15 UNPERF 2000MM - 1201714



DIN rail, unperforated, similar to EN 60715, material: Steel, galvanized, passivated with a thick layer, Standard profile, color: silver, Pack of 25 (50 m)

---

DIN rail perforated - NS 35/15 WH PERF 2000MM - 0806602



DIN rail perforated, similar to EN 60715, material: Steel, Galvanized, white passivated, Standard profile, color: white, Pack of 25 (50 m)

---

DIN rail, unperforated - NS 35/15 WH UNPERF 2000MM-VPE 10 - 1204135



DIN rail, unperforated, similar to EN 60715, material: Steel, Galvanized, white passivated, Standard profile, color: silver, Pack of 10 (20 m)



## Fuse modular terminal block - UK 10,3-HESI 1000V - 3211236

### Accessories

DIN rail, unperforated - NS 35/15 AL UNPERF 2000MM - 1201756



DIN rail, unperforated, similar to EN 60715, material: Aluminum, uncoated, Standard profile, color: silver

---

DIN rail perforated - NS 35/15 ZN PERF 2000MM - 1206599



DIN rail perforated, similar to EN 60715, material: Steel, galvanized, Standard profile, color: silver, Pack of 25 (50 m)

---

DIN rail, unperforated - NS 35/15 ZN UNPERF 2000MM - 1206586



DIN rail, unperforated, similar to EN 60715, material: Steel, galvanized, Standard profile, color: silver, Pack of 25 (50 m)

---

DIN rail, unperforated - NS 35/15 CU UNPERF 2000MM-VPE 10 - 1201895



DIN rail, unperforated, similar to EN 60715, material: Copper, uncoated, Standard profile, color: copper-colored, Pack of 10 (20 m)

---

End cap - NS 35/15 CAP - 1206573



DIN rail end piece, for DIN rail NS 35/15

---

## Fuse modular terminal block - UK 10,3-HESI 1000V - 3211236

### Accessories

DIN rail, unperforated - NS 35/15-2,3 UNPERF 2000MM-VPE 10 - 1201798



DIN rail, unperforated, acc. to EN 60715, material: Steel, galvanized, passivated with a thick layer, Standard profile 2.3 mm, color: silver, Pack of 10 (20 m)

---

### End block

End clamp - CLIPFIX 35 - 3022218



Quick mounting end clamp for NS 35/7,5 DIN rail or NS 35/15 DIN rail, with marking option, width: 9.5 mm, color: gray

---

End clamp - CLIPFIX 35-5 - 3022276



Quick mounting end clamp for NS 35/7,5 DIN rail or NS 35/15 DIN rail, with marking option, with parking option for FBS...5, FBS...6, KSS 5, KSS 6, width: 5.15 mm, color: gray

---

End clamp - E/NS 35 N - 0800886



End clamp, width: 9.5 mm, color: gray

---

### Fuse

Fuse - FUSE 10,3X38 2A PV - 3061295



Fuse, 10.3x38 mm, up to 1000 V DC, gPV characteristics

## Fuse modular terminal block - UK 10,3-HESI 1000V - 3211236

### Accessories

---

Fuse - FUSE 10,3X38 4A PV - 3061305



Fuse, 10.3x38 mm, up to 1000 V DC, gPV characteristics

---

Fuse - FUSE 10,3X38 6A PV - 3061318



Fuse, 10.3x38 mm, up to 1000 V DC, gPV characteristics

---

Fuse - FUSE 10,3X38 8A PV - 3061321



Fuse, 10.3x38 mm, up to 1000 V DC, gPV characteristics

---

Fuse - FUSE 10,3X38 10A PV - 3061334



Fuse, 10.3x38 mm, up to 1000 V DC, gPV characteristics

---

Fuse - FUSE 10,3X38 12A PV - 3061347



Fuse, 10.3x38 mm, up to 1000 V DC, gPV characteristics

---

## Fuse modular terminal block - UK 10,3-HESI 1000V - 3211236

### Accessories

Fuse - FUSE 10,3X38 16A PV - 3061350



Fuse, 10.3x38 mm, up to 1000 V DC, gPV characteristics

---

Fuse - FUSE 10,3X38 20A PV - 3061363



Fuse, 10.3x38 mm, up to 1000 V DC, gPV characteristics

---

Fuse - FUSE 10,3X38 25A PV - 3061364



Fuse, 10.3x38 mm, up to 1000 V DC, gPV characteristics

---

Fuse - FUSE 10,3X38 15A PV - 3061348



Fuse, 10.3x38 mm, up to 1000 V DC, gPV characteristics

---

Fuse - FUSE 10,3X38 2A PV - 3061295



Fuse, 10.3x38 mm, up to 1000 V DC, gPV characteristics

---

## Fuse modular terminal block - UK 10,3-HESI 1000V - 3211236

### Accessories

Fuse - FUSE 10,3X38 4A PV - 3061305



Fuse, 10.3x38 mm, up to 1000 V DC, gPV characteristics

---

Fuse - FUSE 10,3X38 6A PV - 3061318



Fuse, 10.3x38 mm, up to 1000 V DC, gPV characteristics

---

Fuse - FUSE 10,3X38 8A PV - 3061321



Fuse, 10.3x38 mm, up to 1000 V DC, gPV characteristics

---

Fuse - FUSE 10,3X38 10A PV - 3061334



Fuse, 10.3x38 mm, up to 1000 V DC, gPV characteristics

---

Fuse - FUSE 10,3X38 12A PV - 3061347



Fuse, 10.3x38 mm, up to 1000 V DC, gPV characteristics

---

## Fuse modular terminal block - UK 10,3-HESI 1000V - 3211236

### Accessories

Fuse - FUSE 10,3X38 15A PV - 3061348



Fuse, 10.3x38 mm, up to 1000 V DC, gPV characteristics

---

Fuse - FUSE 10,3X38 16A PV - 3061350



Fuse, 10.3x38 mm, up to 1000 V DC, gPV characteristics

---

Fuse - FUSE 10,3X38 20A PV - 3061363



Fuse, 10.3x38 mm, up to 1000 V DC, gPV characteristics

---

Fuse - FUSE 10,3X38 25A PV - 3061364



Fuse, 10.3x38 mm, up to 1000 V DC, gPV characteristics

---

Fuse - FUSE 10,3X38 25A PV 900V - 3061365



Fuse, 10.3 mm x 38 mm, up to 900 V DC, gPV characteristic

---

## Fuse modular terminal block - UK 10,3-HESI 1000V - 3211236

### Accessories

Fuse - FUSE 10,3X38 6A PV A - 3062778



Fuse, for the photovoltaics industry according to UL 2579, nominal current: 6 A, length: 38 mm, diameter: 10.3 mm, color: white

---

Fuse - FUSE 10,3X38 8A PV A - 3062779



Fuse, for the photovoltaics industry according to UL 2579, nominal current: 8 A, length: 38 mm, diameter: 10.3 mm, color: white

---

Fuse - FUSE 10,3X38 10A PV A - 3062780



Fuse, for the photovoltaics industry according to UL 2579, nominal current: 10 A, length: 38 mm, diameter: 10.3 mm, color: white

---

Fuse - FUSE 10,3X38 12A PV A - 3062781



Fuse, for the photovoltaics industry according to UL 2579, nominal current: 12 A, length: 38 mm, diameter: 10.3 mm, color: white

---

Fuse - FUSE 10,3X38 16A PV A - 3062782



Fuse, for the photovoltaics industry according to UL 2579, nominal current: 16 A, length: 38 mm, diameter: 10.3 mm, color: white

---

## Fuse modular terminal block - UK 10,3-HESI 1000V - 3211236

### Accessories

Fuse - FUSE 10,3X38 15A PV A - 3062784



Fuse, for the photovoltaics industry according to UL 2579, nominal current: 15 A, length: 38 mm, diameter: 10.3 mm, color: white

---

### Insertion bridge

Insertion bridge - EB 56-18 - 3009299



Insertion bridge, pitch: 18 mm, color: gray

---

Insertion bridge - EB 2-18 - 3009300



Insertion bridge, pitch: 17.8 mm, color: light gray

---

Insertion bridge - EB 3-18 - 3009305



Insertion bridge, pitch: 17.8 mm, color: light gray

---

### Labeled terminal marker

Zack Marker strip, flat - ZBF 16 CUS - 0827465



Zack Marker strip, flat, can be ordered: Strip, white, labeled according to customer specifications, mounting type: snap into flat marker groove, for terminal block width: 16 mm, lettering field size: 5.15 x 16 mm, Number of individual labels: 5



## Fuse modular terminal block - UK 10,3-HESI 1000V - 3211236

### Accessories

---

#### Marker for terminal blocks - UC-TMF 16 CUS - 0824678



Marker for terminal blocks, can be ordered: by sheet, white, labeled according to customer specifications, mounting type: snap into flat marker groove, for terminal block width: 16 mm, lettering field size: 15.45 x 5.1 mm, Number of individual labels: 32

#### Marker for terminal blocks - UCT-TMF 16 CUS - 0829693



Marker for terminal blocks, can be ordered: by sheet, white, labeled according to customer specifications, mounting type: snap into flat marker groove, for terminal block width: 16 mm, lettering field size: 15.2 x 4.7 mm, Number of individual labels: 24

### Screwdriver tools

#### Screwdriver - SF-SL 0,6X3,5-100 S-VDE - 1212587



Actuation tool, for ST terminal blocks, VDE insulated, with slimmer insulation integrated in the blade, also suitable for use as a bladed screwdriver, size: 0.6 x 3.5 x 100 mm, 2-component grip, with non-slip grip

#### Philips screwdriver - SZK PZ2 VDE - 1206463



Screwdriver, PZ crosshead, VDE insulated, size: PZ 2 x 100 mm, 2-component grip, with non-slip grip

#### Screwdriver - SZS 1,0X4,0 VDE - 1205066



Screwdriver, slot-headed, VDE insulated, size: 1.0 x 4.0 x 100 mm, 2-component grip, with non-slip grip

## Fuse modular terminal block - UK 10,3-HESI 1000V - 3211236

### Accessories

#### Terminal marking

Zack Marker strip, flat - ZBF 16:UNPRINTED - 0827464



Zack Marker strip, flat, Strip, white, unlabeled, can be labeled with: PLOTMARK, CMS-P1-PLOTTER, mounting type: snap in, for terminal block width: 16 mm, lettering field size: 16.25 x 10.5 mm, Number of individual labels: 50

---

Marker for terminal blocks - UC-TMF 16 - 0819262



Marker for terminal blocks, Sheet, white, unlabeled, can be labeled with: BLUEMARK ID COLOR, BLUEMARK ID, BLUEMARK CLED, PLOTMARK, CMS-P1-PLOTTER, mounting type: snap in, for terminal block width: 16 mm, lettering field size: 15.45 x 5.1 mm, Number of individual labels: 32

---

Marker for terminal blocks - UCT-TMF 16 - 0829218



Marker for terminal blocks, Sheet, white, unlabeled, can be labeled with: TOPMARK NEO, TOPMARK LASER, BLUEMARK ID COLOR, BLUEMARK ID, BLUEMARK CLED, THERMOMARK PRIME, THERMOMARK CARD 2.0, THERMOMARK CARD, mounting type: snap in, for terminal block width: 16 mm, lettering field size: 15.2 x 4.7 mm, Number of individual labels: 24

---

---