

# Push wire

## PCT-212



### วิธีใช้งาน



1  
ปลอกสายประมาณ  
9-11 mm.



2  
ข้างเดียวขึ้น



3  
เสียบสายไฟเข้าไปให้สุด

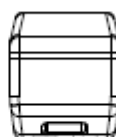
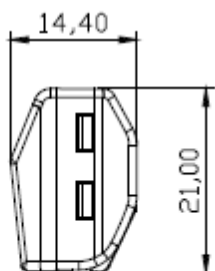
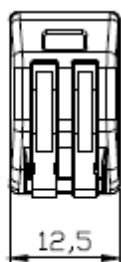
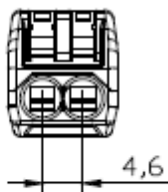


4  
ปิดด้วยลิ้น



SHANGHAI ANSON ELECTRIC TECHNOLOGY CO.,LTD.

Tolerance		Model	unit	mm		
0.000		PCT-212	Ratio	1:1	Custom date	2019.6.20
0.00	±0.05		view			
0.0	±0.10		version	AO	Material	
0.	±					
angle	±1°					



Model	PCT-212
Product	Terminals
Voltage	250V
Ampere	32A
Wiring range	Hard wire 0.08mm <sup>2</sup> ~4.0mm <sup>2</sup> Hard wire 0.08mm <sup>2</sup> ~2.5mm <sup>2</sup>
Stripping length	9-20mm/0.39in
Temperature	-20°-105°
Hole position	2
Plastic material	PA6
Contact material	Copper
Spring material	Special Steel

# Push wire

## PCT-213

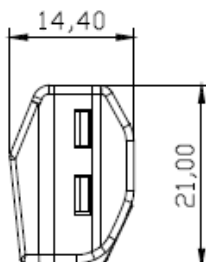
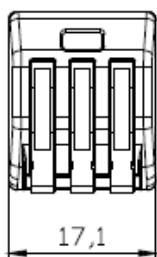
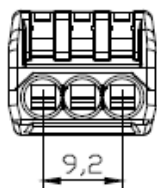


### วิธีใช้งาน



SHANGHAI ANSON ELECTRIC TECHNOLOGY CO.,LTD.

Tolerance		Model	unit	mm		
0.000		PCT-213	Ratio	1:1	Custom date	2019.6.20
0.00	±0.05		view			
0.0	±0.10		version	AO	Material	
0.	±					
angle	±1°					



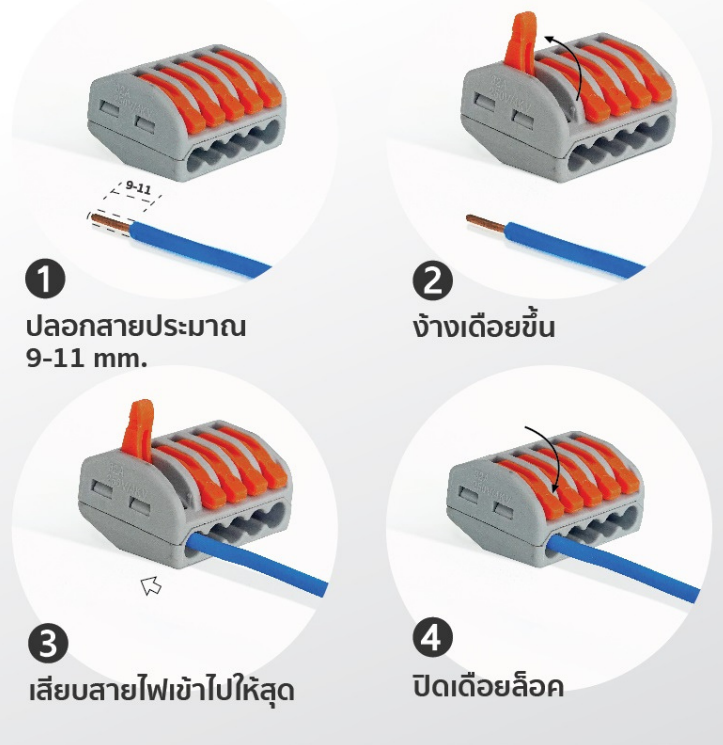
Model	PCT-213
Product	Terminals
Voltage	250V
Ampere	32A
Wiring range	Hard wire 0.08mm <sup>2</sup> ~4.0mm <sup>2</sup> Hard wire 0.08mm <sup>2</sup> ~2.5mm <sup>2</sup>
Stripping length	9-20mm/0.39in
Temperature	-20°-105°
Hole position	3
Plastic material	PA6
Contact material	Copper
Spring material	Special Steel

# Push wire

## PCT-215

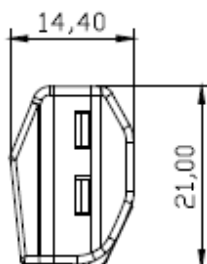
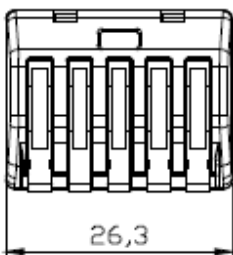
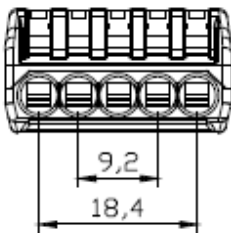


### วิธีใช้งาน



SHANGHAI ANSON ELECTRIC TECHNOLOGY CO.,LTD.

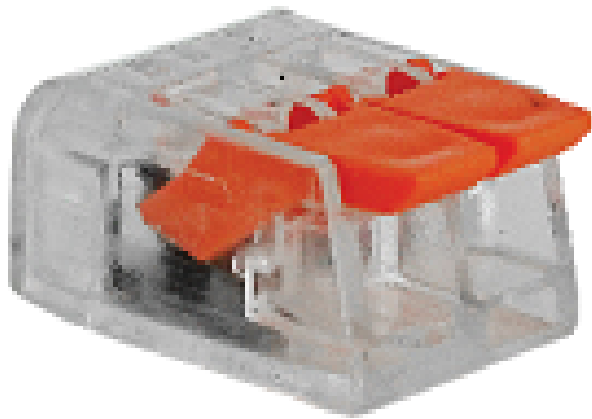
Tolerance	Model	unit	mm			
0.000	PCT-215	Ratio	1:1	Custom date	2019.6.20	
0.00		±0.05				
0.0		±0.10	view			
0.		±	version	AO	Material	
angle	±1°					



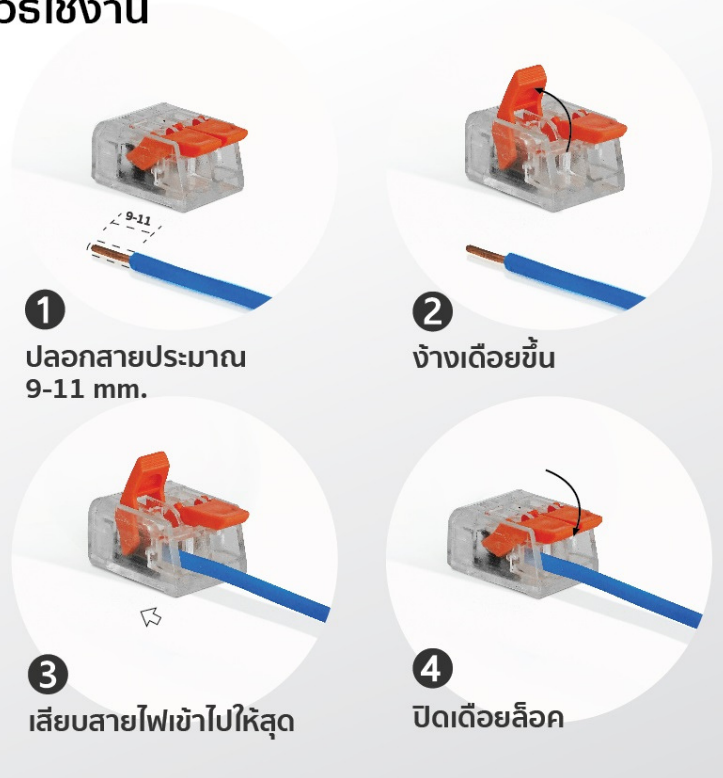
Model	PCT-215
Product	Terminals
Voltage	250V
Ampere	32A
Wiring range	Hard wire 0.08mm <sup>2</sup> ~4.0mm <sup>2</sup> Hard wire 0.08mm <sup>2</sup> ~2.5mm <sup>2</sup>
Stripping length	9-20mm/0.39in
Temperature	-20°-105°
Hole position	5
Plastic material	PA6
Contact material	Copper
Spring material	Special Steel

# Push wire

## PCT-412



### วิธีใช้งาน



1

ปลอกสายประมาณ  
9-11 mm.

2

ข้างเดียวชั้น

3

เสียบสายไฟเข้าไปให้สุด

4

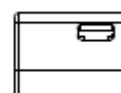
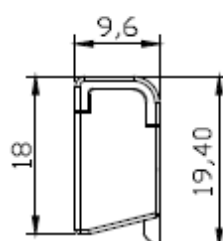
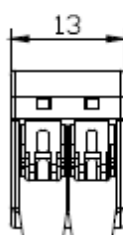
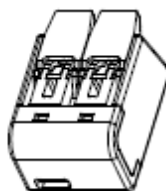
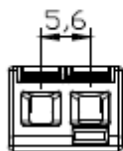
ปิดด้วยลิ้น



SHANGHAI ANSON ELECTRIC TECHNOLOGY CO.,LTD.

Tolerance	Model	unit	mm		
0.000	PCT-412	Ratio	1:1	Custom date	2019.6.20
0.00		±0.05	view		
0.0		±0.10			
0.		±			
angle	±1°	version	AO	Material	

Model	PCT-412
Product	Terminals
Voltage	220V~450V
Ampere	32A
Wiring range	Hard wire 0.2mm <sup>2</sup> ~4.0mm <sup>2</sup> Cord wire 0.14mm <sup>2</sup> ~2.5mm <sup>2</sup>
Stripping length	10-12mm/0.47in
Temperature	-20°-105°
Hole position	2
Plastic material	PA6
Contact material	Copper
Spring material	Special Steel

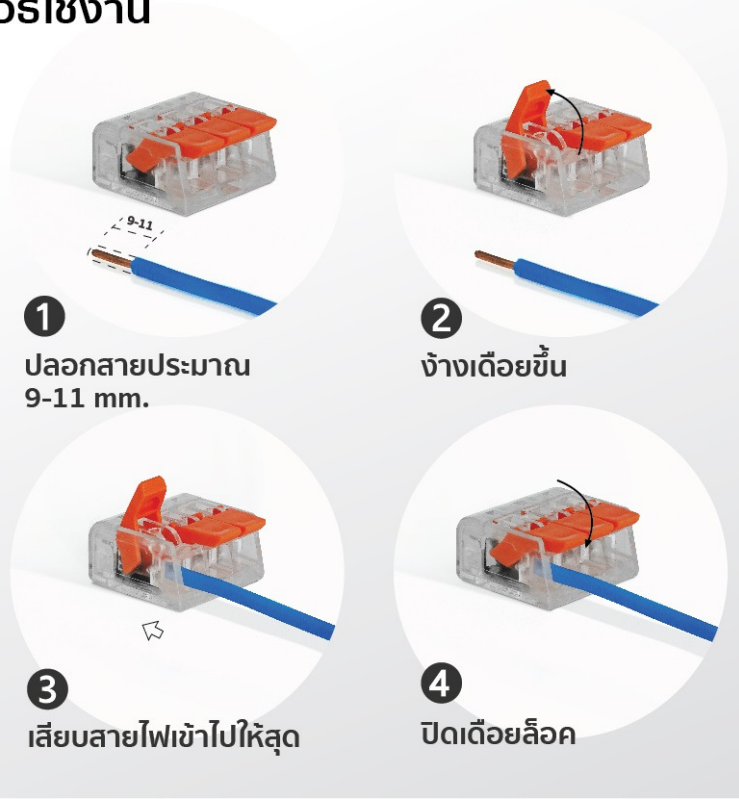


# Push wire

## PCT-413



### วิธีใช้งาน



1  
ปลอกสายประมาณ  
9-11 mm.

2  
ข้างเดียวขึ้น

3  
เสียบสายไฟเข้าไปให้สุด

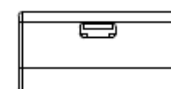
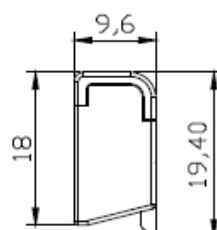
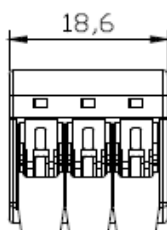
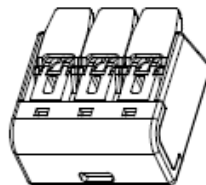
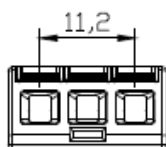
4  
ปิดด้วยลิ้น



anxele®

SHANGHAI ANSON ELECTRIC TECHNOLOGY CO.,LTD.

Tolerance	Model	unit	mm		
0.000	PCT-413	Ratio	1:1	Custom date	2019.6.20
0.00					
0.0		±0.10	view		
0.		±	version	AO	Material
angle	±1°				



Model	PCT-413
Product	Terminals
Voltage	450V
Ampere	32A
Wiring range	Hard wire 0.2mm <sup>2</sup> ~4.0mm <sup>2</sup> Cord wire 0.14mm <sup>2</sup> ~2.5mm <sup>2</sup>
Stripping length	10-12mm/0.47in
Temperature	-20°-105°
Hole position	3
Plastic material	PA6
Contact material	Copper
Spring material	Special Steel