

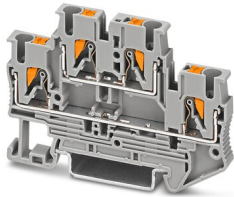
# PTTB 2,5 - Double-level terminal block



3210567

<https://www.phoenixcontact.com/sg/products/3210567>

Please be informed that the data shown in this PDF document is generated from our online catalog. Please find the complete data in the user documentation. Our general terms of use for downloads are valid.



Double-level terminal block, nom. voltage: 500 V, nominal current: 22 A, connection method: Push-in connection, 1st and 2nd level, Rated cross section: 2.5 mm<sup>2</sup>, cross section: 0.14 mm<sup>2</sup> - 4 mm<sup>2</sup>, mounting type: NS 35/7,5, NS 35/15, color: gray

## Your advantages

- The Push-in connection terminal blocks are characterized by the system features of the CLIPLINE complete system and by easy and tool-free wiring of conductors with ferrules or solid conductors
- The compact design and front connection enable wiring in a confined space
- In addition to the testing facility in the double function shaft, all terminal blocks provide an additional test connection
- Tested for railway applications

## Commercial data

Item number	3210567
Packing unit	50 pc
Minimum order quantity	50 pc
Sales key	*****
Product key	BE2214
Catalog page	Page 72 (C-1-2019)
GTIN	4046356418980
Weight per piece (including packing)	10.84 g
Weight per piece (excluding packing)	10.028 g
Customs tariff number	85369010
Country of origin	CN

# PTTB 2,5 - Double-level terminal block



3210567

<https://www.phoenixcontact.com/sg/products/3210567>

## Technical data

### Product properties

Product type	Multi-level terminal block
Area of application	Railway industry
Number of connections	4
Number of rows	2
Potentials	2

### Insulation characteristics

Overvoltage category	III
Degree of pollution	3

### Electrical properties

Rated surge voltage	6 kV
Maximum power dissipation for nominal condition	0.77 W

### Connection data

Number of connections per level	2
Nominal cross section	2.5 mm <sup>2</sup>
Rated cross section AWG	12

### 1st and 2nd level

Stripping length	8 mm ... 10 mm
Internal cylindrical gage	A4
Connection in acc. with standard	IEC 60947-7-1
Conductor cross section rigid	0.14 mm <sup>2</sup> ... 4 mm <sup>2</sup>
Cross section AWG	26 ... 12 (converted acc. to IEC)
Conductor cross section flexible	0.14 mm <sup>2</sup> ... 4 mm <sup>2</sup>
Conductor cross section, flexible [AWG]	26 ... 12 (converted acc. to IEC)
Conductor cross-section flexible (ferrule without plastic sleeve)	0.14 mm <sup>2</sup> ... 2.5 mm <sup>2</sup>
Flexible conductor cross section (ferrule with plastic sleeve)	0.14 mm <sup>2</sup> ... 2.5 mm <sup>2</sup>
Conductor cross-section flexible (2 conductors with the same cross-section, with TWIN ferrule and plastic sleeve)	0.5 mm <sup>2</sup>
2 conductors with the same cross section, flexible, with TWIN ferrule with plastic sleeve	0.5 mm <sup>2</sup>
Nominal current	22 A (with 2.5 mm <sup>2</sup> conductor connection cross section)
Maximum load current	26 A (with 4 mm <sup>2</sup> conductor cross section, rigid)
Nominal voltage	500 V
Nominal cross section	2.5 mm <sup>2</sup>

### 1st and 2nd level Connection cross sections directly pluggable

Conductor cross section rigid	0.34 mm <sup>2</sup> ... 4 mm <sup>2</sup>
Conductor cross-section flexible (ferrule without plastic sleeve)	0.34 mm <sup>2</sup> ... 2.5 mm <sup>2</sup>
Flexible conductor cross section (ferrule with plastic sleeve)	0.34 mm <sup>2</sup> ... 2.5 mm <sup>2</sup>

# PTTB 2,5 - Double-level terminal block



3210567

<https://www.phoenixcontact.com/sg/products/3210567>

## Ex data

### Rated data (ATEX/IECEX)

Identification	⊕ II 2 G Ex eb IIC Gb
Operating temperature range	-60 °C ... 110 °C
Ex-certified accessories	3211634 D-PTTB 2,5 3030747 ATP-STTB 4 1204517 SZF 1-0,6X3,5 3022276 CLIPFIX 35-5 3022218 CLIPFIX 35
List of bridges	Plug-in bridge / FBS 2-5 / 3030161 Plug-in bridge / FBS 3-5 / 3030174 Plug-in bridge / FBS 4-5 / 3030187 Plug-in bridge / FBS 5-5 / 3030190 Plug-in bridge / FBS 10-5 / 3030213 Plug-in bridge / FBS 20-5 / 3030226 Plug-in bridge / FBS 50-5 / 3038930
Bridge data	16 A / 2.5 mm <sup>2</sup>
Ex temperature increase	40 K (18 A / 2.5 mm <sup>2</sup> )
Rated voltage	440 V
for bridging with bridge	440 V
- At bridging between non-adjacent terminal blocks	352 V
- At cut-to-length bridging	166 V
- At cut-to-length bridging with cover	352 V
- At cut-to-length bridging with partition plate	440 V
Rated insulation voltage	400 V
output	(Permanent)

### Ex level General

Rated current	18 A
Maximum load current	22 A

### Ex connection data General

Nominal cross section	2.5 mm <sup>2</sup>
Rated cross section AWG	14
Connection capacity rigid	0.14 mm <sup>2</sup> ... 4 mm <sup>2</sup>
Connection capacity AWG	26 ... 12
Connection capacity flexible	0.14 mm <sup>2</sup> ... 2.5 mm <sup>2</sup>
Connection capacity AWG	26 ... 14
output	(Permanent)

### Ex level Level 1

Contact resistance	1.2 mΩ
output	(Permanent)

# PTTB 2,5 - Double-level terminal block



3210567

<https://www.phoenixcontact.com/sg/products/3210567>

## Ex level Level 2

Contact resistance	0.92 mΩ
--------------------	---------

## Dimensions

Width	5.2 mm
End cover width	2.2 mm
Height	68 mm
Depth	45.8 mm
Depth on NS 35/7,5	47.5 mm
Depth on NS 35/15	55 mm

## Material specifications

Color	gray
Flammability rating according to UL 94	V0
Insulating material group	I
Insulating material	PA
Static insulating material application in cold	-60 °C
Temperature index of insulation material (DIN EN 60216-1 (VDE 0304-21))	130 °C
Relative insulation material temperature index (Elec., UL 746 B)	130 °C
Fire protection for rail vehicles (DIN EN 45545-2) R22	HL 1 - HL 3
Fire protection for rail vehicles (DIN EN 45545-2) R23	HL 1 - HL 3
Fire protection for rail vehicles (DIN EN 45545-2) R24	HL 1 - HL 3
Fire protection for rail vehicles (DIN EN 45545-2) R26	HL 1 - HL 3
Calorimetric heat release NFPA 130 (ASTM E 1354)	28 MJ/kg
Surface flammability NFPA 130 (ASTM E 162)	passed
Specific optical density of smoke NFPA 130 (ASTM E 662)	passed
Smoke gas toxicity NFPA 130 (SMP 800C)	passed

## Electrical tests

### Surge voltage test

Test voltage setpoint	7.3 kV
Result	Test passed

### Temperature-rise test

Requirement temperature-rise test	Increase in temperature $\leq 45$ K
Result	Test passed
Short-time withstand current 2.5 mm <sup>2</sup>	0.3 kA
Short-time withstand current 4 mm <sup>2</sup>	0.48 kA
Result	Test passed

### Power-frequency withstand voltage

Test voltage setpoint	1.89 kV
Result	Test passed

# PTTB 2,5 - Double-level terminal block



3210567

<https://www.phoenixcontact.com/sg/products/3210567>

## Mechanical properties

### Mechanical data

Open side panel	Yes
-----------------	-----

## Mechanical tests

### Mechanical strength

Result	Test passed
--------	-------------

### Attachment on the carrier

DIN rail/fixing support	NS 35
Test force setpoint	1 N
Result	Test passed

### Test for conductor damage and slackening

Rotation speed	10 rpm
Revolutions	135
Conductor cross section/weight	0.14 mm <sup>2</sup> / 0.2 kg
	2.5 mm <sup>2</sup> / 0.7 kg
	4 mm <sup>2</sup> / 0.9 kg
Result	Test passed

## Environmental and real-life conditions

### Aging

Temperature cycles	192
Result	Test passed

### Needle-flame test

Time of exposure	30 s
Result	Test passed

### Oscillation/broadband noise

Specification	DIN EN 50155 (VDE 0115-200):2008-03
Spectrum	Service life test category 2, bogie-mounted
Frequency	$f_1 = 5 \text{ Hz}$ to $f_2 = 250 \text{ Hz}$
ASD level	6.12 (m/s <sup>2</sup> ) <sup>2</sup> /Hz
Acceleration	3.12g
Test duration per axis	5 h
Test directions	X-, Y- and Z-axis
Result	Test passed

### Shocks

Specification	DIN EN 50155 (VDE 0115-200):2008-03
Pulse shape	Half-sine
Acceleration	30g

# PTTB 2,5 - Double-level terminal block



3210567

<https://www.phoenixcontact.com/sg/products/3210567>

Shock duration	18 ms
Number of shocks per direction	3
Test directions	X-, Y- and Z-axis (pos. and neg.)
Result	Test passed

## Ambient conditions

Ambient temperature (operation)	-60 °C ... 105 °C (max. short-term operating temperature RTI Elec.)
Ambient temperature (storage/transport)	-25 °C ... 60 °C (for a short time, not exceeding 24 h, -60 °C to +70 °C)
Ambient temperature (assembly)	-5 °C ... 70 °C
Ambient temperature (actuation)	-5 °C ... 70 °C
Permissible humidity (storage/transport)	30 % ... 70 %

## Standards and regulations

Connection in acc. with standard	IEC 60947-7-1
----------------------------------	---------------

## Mounting

Mounting type	NS 35/7,5
	NS 35/15

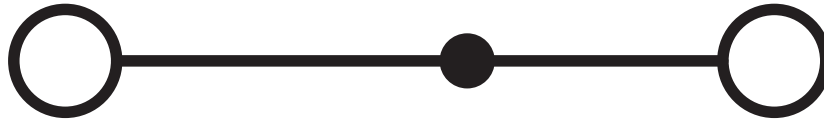
# PTTB 2,5 - Double-level terminal block

3210567

<https://www.phoenixcontact.com/sg/products/3210567>

## Drawings

Circuit diagram



# PTTB 2,5 - Double-level terminal block



3210567

<https://www.phoenixcontact.com/sg/products/3210567>

## Approvals

To download certificates, visit the product detail page: <https://www.phoenixcontact.com/sg/products/3210567>

### DNV

Approval ID: TAE00003JE



### CSA

Approval ID: 13631

	Nominal voltage $U_N$	Nominal current $I_N$	Cross section AWG	Cross section $\text{mm}^2$
Use group B	300 V	20 A	26 - 12	-
Use group C	300 V	20 A	26 - 12	-
Use group D	600 V	5 A	26 - 12	-



### IECEE CB Scheme

Approval ID: DE1-66980

	Nominal voltage $U_N$	Nominal current $I_N$	Cross section AWG	Cross section $\text{mm}^2$
	500 V	22 A	-	0.2 - 2.5



### EAC

Approval ID: RU C-DE.AI30.B.01102



### cULus Recognized

Approval ID: E60425



### LR

Approval ID: LR2371832TA



### NK

Approval ID: 22ME0007



### RS

Approval ID: 22.44.01.00083.250



### BV

Approval ID: 25278/C1 BV



# PTTB 2,5 - Double-level terminal block



3210567

<https://www.phoenixcontact.com/sg/products/3210567>



**EAC**  
Approval ID: RU C-DE.BL08.B.00644



**VDE Zeichengenehmigung**  
Approval ID: 40032222

	Nominal voltage $U_N$	Nominal current $I_N$	Cross section AWG	Cross section $mm^2$
	500 V	22 A	-	0.2 - 2.5

**ABS**

Approval ID: 21-2192245-PDA



**NK**  
Approval ID: 14ME0912



**LR**  
Approval ID: 14/20056



**cULus Recognized**  
Approval ID: E60425



**EAC Ex**  
Approval ID: RU C-DE.AB72.B.02351



**IECEX**  
Approval ID: IECEXPTB10.0021U

	Nominal voltage $U_N$	Nominal current $I_N$	Cross section AWG	Cross section $mm^2$
Only flexible conductors	440 V	18 A	-	0.14 - 2.5
Only rigid conductors	440 V	22 A	-	0.14 - 4



**ATEX**  
Approval ID: PTB09ATEX1111U

	Nominal voltage $U_N$	Nominal current $I_N$	Cross section AWG	Cross section $mm^2$
Only flexible conductors	440 V	18 A	-	0.14 - 2.5
Only rigid conductors	440 V	22 A	-	0.14 - 4

# PTTB 2,5 - Double-level terminal block



3210567

<https://www.phoenixcontact.com/sg/products/3210567>



**CCC**

Approval ID: 2020322313000631



**UKCA-EX**

Approval ID: CSAE 22UKEX1096U

# PTTB 2,5 - Double-level terminal block



3210567

<https://www.phoenixcontact.com/sg/products/3210567>

## Classifications

### ECLASS

ECLASS-11.0	27141120
ECLASS-13.0	27250102

### ETIM

ETIM 8.0	EC000897
----------	----------

### UNSPSC

UNSPSC 21.0	39121400
-------------	----------

# PTTB 2,5 - Double-level terminal block



3210567

<https://www.phoenixcontact.com/sg/products/3210567>

## Environmental product compliance

China RoHS	Environmentally friendly use period: unlimited = EFUP-e
	No hazardous substances above threshold values

# PTTB 2,5 - Double-level terminal block

3210567

<https://www.phoenixcontact.com/sg/products/3210567>

## Accessories

 Note: Applying some accessories below might limit this product.


### FBS 2-5 - Plug-in bridge

3030161

<https://www.phoenixcontact.com/sg/products/3030161>



Plug-in bridge, pitch: 5.2 mm, number of positions: 2, length: 23 mm, color: red

 Max. current carrying capacity: 22 A

---

### FBS 3-5 - Plug-in bridge

3030174

<https://www.phoenixcontact.com/sg/products/3030174>



Plug-in bridge, pitch: 5.2 mm, number of positions: 3, length: 23 mm, color: red

 Max. current carrying capacity: 22 A

# PTTB 2,5 - Double-level terminal block

3210567

<https://www.phoenixcontact.com/sg/products/3210567>



## FBS 4-5 - Plug-in bridge

3030187

<https://www.phoenixcontact.com/sg/products/3030187>



Plug-in bridge, pitch: 5.2 mm, number of positions: 4, length: 23 mm, color: red

 Max. current carrying capacity: 22 A

---


## FBS 5-5 - Plug-in bridge

3030190

<https://www.phoenixcontact.com/sg/products/3030190>



Plug-in bridge, pitch: 5.2 mm, number of positions: 5, length: 23 mm, color: red

 Max. current carrying capacity: 22 A

# PTTB 2,5 - Double-level terminal block

3210567

<https://www.phoenixcontact.com/sg/products/3210567>




## FBS 10-5 - Plug-in bridge

3030213

<https://www.phoenixcontact.com/sg/products/3030213>



Plug-in bridge, pitch: 5.2 mm, number of positions: 10, length: 23 mm, color: red

 Max. current carrying capacity: 22 A

---

## FBS 20-5 - Plug-in bridge

3030226

<https://www.phoenixcontact.com/sg/products/3030226>



Plug-in bridge, pitch: 5.2 mm, number of positions: 20, color: red

 Max. current carrying capacity: 22 A

# PTTB 2,5 - Double-level terminal block

3210567

<https://www.phoenixcontact.com/sg/products/3210567>




## FBS 50-5 - Plug-in bridge

3038930

<https://www.phoenixcontact.com/sg/products/3038930>



Plug-in bridge, pitch: 5.2 mm, number of positions: 50, color: red

 Max. current carrying capacity: 22 A

---


## FBSR 2-5 - Plug-in bridge

3033702

<https://www.phoenixcontact.com/sg/products/3033702>



Plug-in bridge, pitch: 5.2 mm, number of positions: 2, color: red

 Max. current carrying capacity: 17.5 A



# PTTB 2,5 - Double-level terminal block

3210567

<https://www.phoenixcontact.com/sg/products/3210567>




## FBSR 3-5 - Plug-in bridge

3001591

<https://www.phoenixcontact.com/sg/products/3001591>



Plug-in bridge, pitch: 5.2 mm, number of positions: 3, color: red

 Max. current carrying capacity: 17.5 A

---


## FBSR 4-5 - Plug-in bridge

3001592

<https://www.phoenixcontact.com/sg/products/3001592>



Plug-in bridge, pitch: 5.2 mm, number of positions: 4, color: red

 Max. current carrying capacity: 17.5 A

# PTTB 2,5 - Double-level terminal block

3210567

<https://www.phoenixcontact.com/sg/products/3210567>




## FBSR 5-5 - Plug-in bridge

3001593

<https://www.phoenixcontact.com/sg/products/3001593>

Plug-in bridge, pitch: 5.2 mm, number of positions: 5, color: red



 Max. current carrying capacity: 17.5 A

---


## FBSR 10-5 - Plug-in bridge

3033710

<https://www.phoenixcontact.com/sg/products/3033710>

Plug-in bridge, pitch: 5.2 mm, number of positions: 10, color: red



 Max. current carrying capacity: 17.5 A

# PTTB 2,5 - Double-level terminal block

3210567

<https://www.phoenixcontact.com/sg/products/3210567>



## FBS-PV - Potential bridge

3032185

<https://www.phoenixcontact.com/sg/products/3032185>



Vertical potential bridge, to connect the upper and lower level

---


## FBS 2-5 BU - Plug-in bridge

3036877

<https://www.phoenixcontact.com/sg/products/3036877>



Plug-in bridge, pitch: 5.2 mm, number of positions: 2, color: blue

 Max. current carrying capacity: 22 A

# PTTB 2,5 - Double-level terminal block

3210567

<https://www.phoenixcontact.com/sg/products/3210567>



## FBS 3-5 BU - Plug-in bridge

3036880

<https://www.phoenixcontact.com/sg/products/3036880>



Plug-in bridge, pitch: 5.2 mm, number of positions: 3, color: blue

 Max. current carrying capacity: 22 A

---

## FBS 4-5 BU - Plug-in bridge

3036893

<https://www.phoenixcontact.com/sg/products/3036893>



Plug-in bridge, pitch: 5.2 mm, number of positions: 4, color: blue

 Max. current carrying capacity: 22 A

# PTTB 2,5 - Double-level terminal block

3210567

<https://www.phoenixcontact.com/sg/products/3210567>




## FBS 5-5 BU - Plug-in bridge

3036903

<https://www.phoenixcontact.com/sg/products/3036903>



Plug-in bridge, pitch: 5.2 mm, number of positions: 5, color: blue

 Max. current carrying capacity: 22 A

---


## FBS 10-5 BU - Plug-in bridge

3036916

<https://www.phoenixcontact.com/sg/products/3036916>



Plug-in bridge, pitch: 5.2 mm, number of positions: 10, color: blue

 Max. current carrying capacity: 22 A

# PTTB 2,5 - Double-level terminal block

3210567

<https://www.phoenixcontact.com/sg/products/3210567>

## FBS 20-5 BU - Plug-in bridge

3036929

<https://www.phoenixcontact.com/sg/products/3036929>



Plug-in bridge, pitch: 5.2 mm, number of positions: 20, color: blue

 Max. current carrying capacity: 22 A

---

## FBS 50-5 BU - Plug-in bridge

3032114

<https://www.phoenixcontact.com/sg/products/3032114>



Plug-in bridge, pitch: 5.2 mm, number of positions: 50, color: blue

 Max. current carrying capacity: 22 A

# PTTB 2,5 - Double-level terminal block



3210567

<https://www.phoenixcontact.com/sg/products/3210567>

## ATP-STTB 4 - Partition plate

3030747

<https://www.phoenixcontact.com/sg/products/3030747>

Partition plate, length: 88.7 mm, width: 2 mm, height: 88.7 mm, color: gray



---

## D-PTTB 2,5 - End cover

3211634

<https://www.phoenixcontact.com/sg/products/3211634>

End cover, length: 68 mm, width: 2.2 mm, height: 68 mm, color: gray



# PTTB 2,5 - Double-level terminal block



3210567

<https://www.phoenixcontact.com/sg/products/3210567>

## SZF 1-0,6X3,5 - Screwdriver

1204517

<https://www.phoenixcontact.com/sg/products/1204517>



Actuation tool, for ST terminal blocks, also suitable for use as a bladed screwdriver, size: 0.6 x 3.5 x 100 mm, 2-component grip, with non-slip grip

---

## STP 5-2 - Marker carriers

0800967

<https://www.phoenixcontact.com/sg/products/0800967>



Marker carriers, snaps into STTB 2,5, STTB 4, PTTB 2,5, and PTTB 4 double-level spring-cage terminal blocks, can be marked with UC-TM 5, UC-TMF 5, UCT-TM 5, UCT-TMF 5, ZB 5, or ZBF 5, gray, unlabeled, mounting type: plug in, lettering field size: 5 x 10.5 mm



# PTTB 2,5 - Double-level terminal block



3210567

<https://www.phoenixcontact.com/sg/products/3210567>

## STP 5-2/S - Marker carriers

0800970

<https://www.phoenixcontact.com/sg/products/0800970>



Marker carriers, snaps into the ZFKK 1,5 double-level spring-cage terminal block with MSTBV or ICV load contact, can be marked with UC-TM 5, UC-TMF 5, UCT-TM 5, UCT-TMF 5, ZB 5, or ZBF 5, gray, unlabeled, mounting type: plug in, lettering field size: 5 x 10.5 mm

---

## PT-IL - Mounting material

3208090

<https://www.phoenixcontact.com/sg/products/3208090>

Operating decal for the push-in Technology



# PTTB 2,5 - Double-level terminal block

3210567

<https://www.phoenixcontact.com/sg/products/3210567>

## ST-BW - Actuation tool

1207608

<https://www.phoenixcontact.com/sg/products/1207608>

Actuation tool, for all 2.5 mm<sup>2</sup> - 4.0 mm<sup>2</sup> spring-cages



---

## CEC 2,5 - Filler plugs

3062757

<https://www.phoenixcontact.com/sg/products/3062757>

Cover for conductor shaft, 10-pos., for spring cage terminal blocks (ST) and terminal blocks with push-in technology (PT) with a width of 5.2 mm



# PTTB 2,5 - Double-level terminal block

3210567

<https://www.phoenixcontact.com/sg/products/3210567>



## P-CO 2-5 R47K - Component connector

3032447

<https://www.phoenixcontact.com/sg/products/3032447>



Component connector, with 47 kOhm resistance for wire-break monitoring, pitch: 5.2 mm, length: 8.9 mm, width: 4.1 mm, height: 8.9 mm, number of positions: 2, color: black

---

## RPS - Reducing plug

0201647

<https://www.phoenixcontact.com/sg/products/0201647>



Reducing plug, number of positions: 1, color: gray

# PTTB 2,5 - Double-level terminal block

3210567

<https://www.phoenixcontact.com/sg/products/3210567>

## WS PT 2,5 - Warning label

1029026

<https://www.phoenixcontact.com/sg/products/1029026>



Warning label, yellow/black, labeled: Lightning flash, mounting type: plug in, for terminal block width: 5.2 mm

---

## WS-DIO PT 2,5 - Warning label

1029037

<https://www.phoenixcontact.com/sg/products/1029037>



Warning label, yellow/black, labeled: Diode, mounting type: plug in, for terminal block width: 5.2 mm

# PTTB 2,5 - Double-level terminal block

3210567

<https://www.phoenixcontact.com/sg/products/3210567>

## LPO 2,5/E - Pick-up plug

3270516

<https://www.phoenixcontact.com/sg/products/3270516>



Pick-up plug, nom. voltage: 800 V, nominal current: 24 A, number of positions: 1, connection method: Push-in connection, Rated cross section: 2.5 mm<sup>2</sup>, cross section: 0.14 mm<sup>2</sup>- 4 mm<sup>2</sup>, color: gray

---

## LPO 2,5 - Pick-up plug

3270517

<https://www.phoenixcontact.com/sg/products/3270517>



Pick-up plug, nom. voltage: 800 V, nominal current: 24 A, number of positions: 1, connection method: Push-in connection, Rated cross section: 2.5 mm<sup>2</sup>, cross section: 0.14 mm<sup>2</sup>- 4 mm<sup>2</sup>, color: gray

# PTTB 2,5 - Double-level terminal block

3210567

<https://www.phoenixcontact.com/sg/products/3210567>

## LPS-5/E - Service connector

3270520

<https://www.phoenixcontact.com/sg/products/3270520>



Service connector, nom. voltage: 800 V, nominal current: 24 A, number of positions: 1, connection method: Push-in connection, Rated cross section: 2.5 mm<sup>2</sup>, cross section: 0.14 mm<sup>2</sup>- 4 mm<sup>2</sup>, color: red

---

## LPS-5 - Service connector

3270521

<https://www.phoenixcontact.com/sg/products/3270521>



Service connector, nom. voltage: 800 V, nominal current: 24 A, number of positions: 1, connection method: Push-in connection, Rated cross section: 2.5 mm<sup>2</sup>, cross section: 0.14 mm<sup>2</sup>- 4 mm<sup>2</sup>, color: red

# PTTB 2,5 - Double-level terminal block

3210567

<https://www.phoenixcontact.com/sg/products/3210567>



## NS 35/ 7,5 PERF 2000MM - DIN rail perforated

0801733

<https://www.phoenixcontact.com/sg/products/0801733>



DIN rail perforated, acc. to EN 60715, material: Steel, galvanized, passivated with a thick layer, Standard profile, color: silver, Pack of 25 (50 m)

---

## NS 35/ 7,5 UNPERF 2000MM - DIN rail, unperforated

0801681

<https://www.phoenixcontact.com/sg/products/0801681>



DIN rail, unperforated, acc. to EN 60715, material: Steel, galvanized, passivated with a thick layer, Standard profile, color: silver, Pack of 25 (50 m)

# PTTB 2,5 - Double-level terminal block

3210567

<https://www.phoenixcontact.com/sg/products/3210567>



## NS 35/ 7,5 WH PERF 2000MM - DIN rail perforated

1204119

<https://www.phoenixcontact.com/sg/products/1204119>



DIN rail perforated, acc. to EN 60715, material: Steel, Galvanized, white passivated, Standard profile, color: silver, Pack of 25 (50 m)

---

## NS 35/ 7,5 WH UNPERF 2000MM-VPE 10 - DIN rail, unperforated

1204122

<https://www.phoenixcontact.com/sg/products/1204122>



DIN rail, unperforated, acc. to EN 60715, material: Steel, Galvanized, white passivated, Standard profile, color: silver, Pack of 10 (20 m)



# PTTB 2,5 - Double-level terminal block

3210567

<https://www.phoenixcontact.com/sg/products/3210567>



## NS 35/ 7,5 AL UNPERF 2000MM - DIN rail, unperforated

0801704

<https://www.phoenixcontact.com/sg/products/0801704>



DIN rail, unperforated, acc. to EN 60715, material: Aluminum, uncoated, Standard profile, color: silver, Pack of 25 (50 m)

---

## NS 35/ 7,5 ZN PERF 2000MM - DIN rail perforated

1206421

<https://www.phoenixcontact.com/sg/products/1206421>



DIN rail perforated, acc. to EN 60715, material: Steel, galvanized, Standard profile, color: silver, Pack of 25 (50 m)

# PTTB 2,5 - Double-level terminal block

3210567

<https://www.phoenixcontact.com/sg/products/3210567>



## NS 35/ 7,5 ZN UNPERF 2000MM - DIN rail, unperforated

1206434

<https://www.phoenixcontact.com/sg/products/1206434>



DIN rail, unperforated, acc. to EN 60715, material: Steel, galvanized, Standard profile, color: silver, Pack of 25 (50 m)

---

## NS 35/ 7,5 CU UNPERF 2000MM-VPE 10 - DIN rail, unperforated

0801762

<https://www.phoenixcontact.com/sg/products/0801762>



DIN rail, unperforated, acc. to EN 60715, material: Copper, uncoated, Standard profile, color: copper-colored, Pack of 10 (20 m)

# PTTB 2,5 - Double-level terminal block

3210567

<https://www.phoenixcontact.com/sg/products/3210567>



## NS 35/ 7,5 CAP - End cap

1206560

<https://www.phoenixcontact.com/sg/products/1206560>

DIN rail end piece, for DIN rail NS 35/7.5



---

## NS 35/15 PERF 2000MM - DIN rail perforated

1201730

<https://www.phoenixcontact.com/sg/products/1201730>



DIN rail perforated, similar to EN 60715, material: Steel, galvanized, passivated with a thick layer, Standard profile, color: silver, Pack of 25 (50 m)

# PTTB 2,5 - Double-level terminal block

3210567

<https://www.phoenixcontact.com/sg/products/3210567>

## NS 35/15 UNPERF 2000MM - DIN rail, unperforated

1201714

<https://www.phoenixcontact.com/sg/products/1201714>



DIN rail, unperforated, similar to EN 60715, material: Steel, galvanized, passivated with a thick layer, Standard profile, color: silver, Pack of 25 (50 m)

---

## NS 35/15 WH PERF 2000MM - DIN rail perforated

0806602

<https://www.phoenixcontact.com/sg/products/0806602>



DIN rail perforated, similar to EN 60715, material: Steel, Galvanized, white passivated, Standard profile, color: white, Pack of 25 (50 m)

# PTTB 2,5 - Double-level terminal block

3210567

<https://www.phoenixcontact.com/sg/products/3210567>



## NS 35/15 WH UNPERF 2000MM-VPE 10 - DIN rail, unperforated

1204135

<https://www.phoenixcontact.com/sg/products/1204135>



DIN rail, unperforated, similar to EN 60715, material: Steel, Galvanized, white passivated, Standard profile, color: silver, Pack of 10 (20 m)

---

## NS 35/15 AL UNPERF 2000MM - DIN rail, unperforated

1201756

<https://www.phoenixcontact.com/sg/products/1201756>



DIN rail, unperforated, similar to EN 60715, material: Aluminum, uncoated, Standard profile, color: silver

## PTTB 2,5 - Double-level terminal block

3210567

<https://www.phoenixcontact.com/sg/products/3210567>



### NS 35/15 ZN PERF 2000MM - DIN rail perforated

1206599

<https://www.phoenixcontact.com/sg/products/1206599>



DIN rail perforated, similar to EN 60715, material: Steel, galvanized, Standard profile, color: silver, Pack of 25 (50 m)

---

### NS 35/15 ZN UNPERF 2000MM - DIN rail, unperforated

1206586

<https://www.phoenixcontact.com/sg/products/1206586>



DIN rail, unperforated, similar to EN 60715, material: Steel, galvanized, Standard profile, color: silver, Pack of 25 (50 m)

# PTTB 2,5 - Double-level terminal block

3210567

<https://www.phoenixcontact.com/sg/products/3210567>



## NS 35/15 CU UNPERF 2000MM-VPE 10 - DIN rail, unperforated

1201895

<https://www.phoenixcontact.com/sg/products/1201895>



DIN rail, unperforated, similar to EN 60715, material: Copper, uncoated, Standard profile, color: copper-colored, Pack of 10 (20 m)

---

## NS 35/15 CAP - End cap

1206573

<https://www.phoenixcontact.com/sg/products/1206573>

DIN rail end piece, for DIN rail NS 35/15



## PTTB 2,5 - Double-level terminal block

3210567

<https://www.phoenixcontact.com/sg/products/3210567>



## NS 35/15-2,3 UNPERF 2000MM-VPE 10 - DIN rail, unperforated

1201798

<https://www.phoenixcontact.com/sg/products/1201798>



DIN rail, unperforated, acc. to EN 60715, material: Steel, galvanized, passivated with a thick layer, Standard profile 2.3 mm, color: silver, Pack of 10 (20 m)

---

## ZBF 5:UNBEDRUCKT - Zack Marker strip, flat

0808642

<https://www.phoenixcontact.com/sg/products/0808642>



Zack Marker strip, flat, Strip, white, unlabeled, can be labeled with: PLOTMARK, CMS-P1-PLOTTER, mounting type: snapped, for terminal block width: 5 mm, lettering field size: 5.1 x 5.2 mm, Number of individual labels: 10



# PTTB 2,5 - Double-level terminal block

3210567

<https://www.phoenixcontact.com/sg/products/3210567>

## ZBF 5 CUS - Zack Marker strip, flat

0825025

<https://www.phoenixcontact.com/sg/products/0825025>



Zack Marker strip, flat, can be ordered: Strip, white, labeled according to customer specifications, mounting type: snap into flat marker groove, for terminal block width: 5 mm, lettering field size: 5.15 x 5.15 mm, Number of individual labels: 10

---

## ZBF 5,LGS:FORTL.ZAHLEN - Zack Marker strip, flat

0808671

<https://www.phoenixcontact.com/sg/products/0808671>



Zack Marker strip, flat, Strip, white, labeled, printed horizontally: consecutive numbers 1 ... 10, 11 ... 20, etc. up to 491 ... 500, mounting type: snapped, for terminal block width: 5 mm, lettering field size: 5.15 x 5.15 mm, Number of individual labels: 10

# PTTB 2,5 - Double-level terminal block

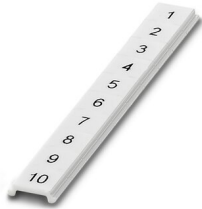
3210567

<https://www.phoenixcontact.com/sg/products/3210567>

## ZBF 5,QR:FORTL.ZAHLEN - Zack Marker strip, flat

0808697

<https://www.phoenixcontact.com/sg/products/0808697>



Zack Marker strip, flat, Strip, white, labeled, Printed vertically: consecutive numbers 1 ... 10, 11 ... 20, etc. up to 91 ... 100, mounting type: snapped, for terminal block width: 5 mm, lettering field size: 5.15 x 5.15 mm, Number of individual labels: 10

---

## ZBF 5,LGS:GERADE ZAHLEN - Zack Marker strip, flat

0810821

<https://www.phoenixcontact.com/sg/products/0810821>



Zack Marker strip, flat, Strip, white, labeled, printed horizontally: consecutive even numbers 2 ... 20, 22 ... 40, etc. up to 82 ... 100, mounting type: snapped, for terminal block width: 5 mm, lettering field size: 5.15 x 5.15 mm, Number of individual labels: 10

# PTTB 2,5 - Double-level terminal block



3210567

<https://www.phoenixcontact.com/sg/products/3210567>

## ZBF 5,LGS:UNGERADE ZAHLEN - Zack Marker strip, flat

0810863

<https://www.phoenixcontact.com/sg/products/0810863>



Zack Marker strip, flat, Strip, white, labeled, printed horizontally: Odd numbers 1 - 19, 21 - 39, etc. up to 81 - 99, mounting type: snapped, for terminal block width: 5 mm, lettering field size: 5.15 x 5.15 mm, Number of individual labels: 10

---

## UC-TMF 5 - Marker for terminal blocks

0818153

<https://www.phoenixcontact.com/sg/products/0818153>



Marker for terminal blocks, Sheet, white, unlabeled, can be labeled with: BLUEMARK ID COLOR, BLUEMARK ID, BLUEMARK CLED, PLOTMARK, CMS-P1-PLOTTER, mounting type: snapped, for terminal block width: 5.2 mm, lettering field size: 4.6 x 5.1 mm, Number of individual labels: 96

# PTTB 2,5 - Double-level terminal block

3210567

<https://www.phoenixcontact.com/sg/products/3210567>



## UC-TMF 5 CUS - Marker for terminal blocks

0824638

<https://www.phoenixcontact.com/sg/products/0824638>



Marker for terminal blocks, can be ordered: by sheet, white, labeled according to customer specifications, mounting type: snap into flat marker groove, for terminal block width: 5.2 mm, lettering field size: 4.6 x 5.1 mm, Number of individual labels: 96

---

## UCT-TMF 5 - Marker for terminal blocks

0828744

<https://www.phoenixcontact.com/sg/products/0828744>



Marker for terminal blocks, Sheet, white, unlabeled, can be labeled with: TOPMARK NEO, TOPMARK LASER, BLUEMARK ID COLOR, BLUEMARK ID, BLUEMARK CLED, THERMOMARK PRIME, THERMOMARK CARD 2.0, THERMOMARK CARD, mounting type: snapped, for terminal block width: 5.2 mm, lettering field size: 4.4 x 4.7 mm, Number of individual labels: 72

## PTTB 2,5 - Double-level terminal block

3210567

<https://www.phoenixcontact.com/sg/products/3210567>



## UCT-TMF 5 CUS - Marker for terminal blocks

0829658

<https://www.phoenixcontact.com/sg/products/0829658>



Marker for terminal blocks, can be ordered: by sheet, white, labeled according to customer specifications, mounting type: snap into flat marker groove, for terminal block width: 5.2 mm, lettering field size: 4.4 x 4.7 mm, Number of individual labels: 72

---

## MPS-MT - Test plugs

0201744

<https://www.phoenixcontact.com/sg/products/0201744>



Test plugs, with solder connection up to 1 mm<sup>2</sup> conductor cross section, number of positions: 1, color: gray

# PTTB 2,5 - Double-level terminal block

3210567

<https://www.phoenixcontact.com/sg/products/3210567>

## MPS-IH WH - Insulating sleeve

0201663

<https://www.phoenixcontact.com/sg/products/0201663>

Insulating sleeve, color: white



## MPS-IH RD - Insulating sleeve

0201676

<https://www.phoenixcontact.com/sg/products/0201676>

Insulating sleeve, color: red



# PTTB 2,5 - Double-level terminal block

3210567

<https://www.phoenixcontact.com/sg/products/3210567>

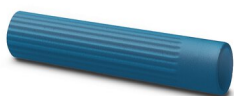


## MPS-IH BU - Insulating sleeve

0201689

<https://www.phoenixcontact.com/sg/products/0201689>

Insulating sleeve, color: blue



---

## MPS-IH YE - Insulating sleeve

0201692

<https://www.phoenixcontact.com/sg/products/0201692>

Insulating sleeve, color: yellow



# PTTB 2,5 - Double-level terminal block

3210567

<https://www.phoenixcontact.com/sg/products/3210567>



## MPS-IH GN - Insulating sleeve

0201702

<https://www.phoenixcontact.com/sg/products/0201702>

Insulating sleeve, color: green



---

## MPS-IH GY - Insulating sleeve

0201728

<https://www.phoenixcontact.com/sg/products/0201728>

Insulating sleeve, color: gray





# PTTB 2,5 - Double-level terminal block

3210567

<https://www.phoenixcontact.com/sg/products/3210567>



## MPS-IH BK - Insulating sleeve

0201731

<https://www.phoenixcontact.com/sg/products/0201731>

Insulating sleeve, color: black



---

## ISH 2,5/0,2 - Insulating sleeve

3002843

<https://www.phoenixcontact.com/sg/products/3002843>

Insulating sleeve, color: white



# PTTB 2,5 - Double-level terminal block

3210567

<https://www.phoenixcontact.com/sg/products/3210567>

## ISH 2,5/0,5 - Insulating sleeve

3002856

<https://www.phoenixcontact.com/sg/products/3002856>



Insulating sleeve, color: gray

---

## ISH 2,5/1,0 - Insulating sleeve

3002869

<https://www.phoenixcontact.com/sg/products/3002869>



Insulating sleeve, color: black

# PTTB 2,5 - Double-level terminal block



3210567

<https://www.phoenixcontact.com/sg/products/3210567>

## PAI-4-FIX-5/6 BU - Test adapter

3035975

<https://www.phoenixcontact.com/sg/products/3035975>



4 mm test adapter, for terminal blocks with 5.2 mm and 6.2 mm pitch

---

## PAI-4-FIX-5/6 OG - Test adapter

3035974

<https://www.phoenixcontact.com/sg/products/3035974>



4 mm test adapter, for terminal blocks with 5.2 mm and 6.2 mm pitch

# PTTB 2,5 - Double-level terminal block

3210567

<https://www.phoenixcontact.com/sg/products/3210567>

## PAI-4-FIX-5/6 YE - Test adapter

3035977

<https://www.phoenixcontact.com/sg/products/3035977>



4 mm test adapter, for terminal blocks with 5.2 mm and 6.2 mm pitch

---

## PAI-4-FIX-5/6 RD - Test adapter

3035976

<https://www.phoenixcontact.com/sg/products/3035976>



4 mm test adapter, for terminal blocks with 5.2 mm and 6.2 mm pitch

# PTTB 2,5 - Double-level terminal block

3210567

<https://www.phoenixcontact.com/sg/products/3210567>

## PAI-4-FIX-5/6 GN - Test adapter

3035978

<https://www.phoenixcontact.com/sg/products/3035978>



4 mm test adapter, for terminal blocks with 5.2 mm and 6.2 mm pitch

---

## PAI-4-FIX-5/6 BK - Test adapter

3035980

<https://www.phoenixcontact.com/sg/products/3035980>



4 mm test adapter, for terminal blocks with 5.2 mm and 6.2 mm pitch

# PTTB 2,5 - Double-level terminal block



3210567

<https://www.phoenixcontact.com/sg/products/3210567>

## PAI-4-FIX-5/6 GY - Test adapter

3035982

<https://www.phoenixcontact.com/sg/products/3035982>



4 mm test adapter, for terminal blocks with 5.2 mm and 6.2 mm pitch

---

## PAI-4-FIX-5/6 VT - Test adapter

3035979

<https://www.phoenixcontact.com/sg/products/3035979>



4 mm test adapter, for terminal blocks with 5.2 mm and 6.2 mm pitch

# PTTB 2,5 - Double-level terminal block



3210567

<https://www.phoenixcontact.com/sg/products/3210567>

## PAI-4-FIX-5/6 BN - Test adapter

3035981

<https://www.phoenixcontact.com/sg/products/3035981>



4 mm test adapter, for terminal blocks with 5.2 mm and 6.2 mm pitch

---

## PAI-4-FIX-5/6 WH - Test adapter

3035983

<https://www.phoenixcontact.com/sg/products/3035983>



4 mm test adapter, for terminal blocks with 5.2 mm and 6.2 mm pitch

# PTTB 2,5 - Double-level terminal block

3210567

<https://www.phoenixcontact.com/sg/products/3210567>



## PS-5 - Test plugs

3030983

<https://www.phoenixcontact.com/sg/products/3030983>



Test plugs, Modular test plug, number of positions: 1, color: red

---

## DP PS-5 - Spacer plate

3036725

<https://www.phoenixcontact.com/sg/products/3036725>



Spacer plate, length: 22.4 mm, width: 5.2 mm, height: 22.4 mm, number of positions: 1, color: red



## PTTB 2,5 - Double-level terminal block

3210567

<https://www.phoenixcontact.com/sg/products/3210567>



## PS-5/2,3MM RD - Test plugs

3038723

<https://www.phoenixcontact.com/sg/products/3038723>



Test plugs, number of positions: 1, color: red

---

## PROJECT COMPLETE - Software

1050453

<https://www.phoenixcontact.com/sg/products/1050453>



Intuitive planning and marking software for configuring terminal strips and for professional marking of marking materials for terminal blocks, conductors, cables, devices, and systems. The software is available for download

# PTTB 2,5 - Double-level terminal block

3210567

<https://www.phoenixcontact.com/sg/products/3210567>

## CLIPFIX 35 - End clamp

3022218

<https://www.phoenixcontact.com/sg/products/3022218>

Quick mounting end clamp for NS 35/7,5 DIN rail or NS 35/15 DIN rail, with marking option, width: 9.5 mm, color: gray



---

## CLIPFIX 35-5 - End clamp

3022276

<https://www.phoenixcontact.com/sg/products/3022276>

Quick mounting end clamp for NS 35/7,5 DIN rail or NS 35/15 DIN rail, with marking option, with parking option for FBS...5, FBS...6, KSS 5, KSS 6, width: 5.15 mm, color: gray



# PTTB 2,5 - Double-level terminal block

3210567

<https://www.phoenixcontact.com/sg/products/3210567>

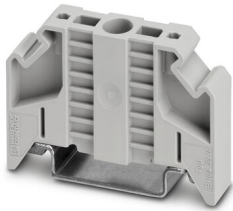


## E/NS 35 N - End clamp

0800886

<https://www.phoenixcontact.com/sg/products/0800886>

End clamp, width: 9.5 mm, color: gray



---

## CRIMPFOX CENTRUS 6S - Crimping pliers

1213144

<https://www.phoenixcontact.com/sg/products/1213144>



Crimping pliers, for uninsulated and insulated ferrules, DIN 46228 Part 1 and 4, from 0.14 mm<sup>2</sup> ... 6 mm<sup>2</sup>, also for TWIN ferrules up to 2 x 4 mm<sup>2</sup>, automatic cross section adjustment, lateral insertion, equipped with fall protection

# PTTB 2,5 - Double-level terminal block

3210567

<https://www.phoenixcontact.com/sg/products/3210567>

## CRIMPFOX CENTRUS 10S - Crimping pliers

1213154

<https://www.phoenixcontact.com/sg/products/1213154>



Crimping pliers, for uninsulated and insulated ferrules, DIN 46228 Part 1 and 4, from 0.14 mm<sup>2</sup> ... 10 mm<sup>2</sup>, also for TWIN ferrules up to 2 x 4 mm<sup>2</sup>, automatic cross section adjustment, lateral insertion, equipped with fall protection

---

## CRIMPFOX CENTRUS 6H - Crimping pliers

1213146

<https://www.phoenixcontact.com/sg/products/1213146>



Crimping pliers, for uninsulated and insulated ferrules, DIN 46228 Part 1 and 4, from 0.14 mm<sup>2</sup> ... 6 mm<sup>2</sup>, also for TWIN ferrules up to 2 x 4 mm<sup>2</sup>, automatic cross section adjustment, lateral insertion, equipped with fall protection

# PTTB 2,5 - Double-level terminal block

3210567

<https://www.phoenixcontact.com/sg/products/3210567>

## CRIMPFOX CENTRUS 10H - Crimping pliers

1213156

<https://www.phoenixcontact.com/sg/products/1213156>



Crimping pliers, for uninsulated and insulated ferrules, DIN 46228 Part 1 and 4, from 0.14 mm<sup>2</sup> ... 10 mm<sup>2</sup>, also for TWIN ferrules up to 2 x 4 mm<sup>2</sup>, automatic cross section adjustment, lateral insertion, equipped with fall protection

---

## CRIMPFOX 10S - Crimping pliers

1212045

<https://www.phoenixcontact.com/sg/products/1212045>



Crimping pliers, for ferrules without insulating collar according to DIN 46228 Part 1 and ferrules with insulating collar according to DIN 46228 Part 4, 0.14 mm<sup>2</sup> ... 10 mm<sup>2</sup>, unlockable pressure lock, lateral entry

# PTTB 2,5 - Double-level terminal block

3210567

<https://www.phoenixcontact.com/sg/products/3210567>

## CRIMPFOX 6H - Crimping pliers

1212046

<https://www.phoenixcontact.com/sg/products/1212046>



Crimping pliers, for ferrules without insulating collar according to DIN 46228 Part 1 and ferrules with insulating collar according to DIN 46228 Part 4, 0.14 mm<sup>2</sup> ... 6 mm<sup>2</sup>, unlockable pressure lock, lateral entry

---

## CRIMPFOX 2,5-M - Crimping pliers

1212719

<https://www.phoenixcontact.com/sg/products/1212719>



Crimping pliers, for ferrules without insulating collar according to DIN 46228 Part 1 and ferrules with insulating collar according to DIN 46228 Part 4, 0.25 mm<sup>2</sup> ... 2.5 mm<sup>2</sup>, lateral entry, trapezoidal crimp

# PTTB 2,5 - Double-level terminal block

3210567

<https://www.phoenixcontact.com/sg/products/3210567>



## CRIMPFOX 6-M - Crimping pliers

1212720

<https://www.phoenixcontact.com/sg/products/1212720>



Crimping pliers, for ferrules without insulating collar according to DIN 46228 Part 1 and ferrules with insulating collar according to DIN 46228 Part 4, 0.25 mm<sup>2</sup> ... 6.0 mm<sup>2</sup>, lateral entry, trapezoidal crimp

---

## CRIMPFOX 6 - Crimping pliers

1212034

<https://www.phoenixcontact.com/sg/products/1212034>



Crimping pliers, for ferrules without insulating collar according to DIN 46228 Part 1 and ferrules with insulating collar according to DIN 46228 Part 4, 0.25 mm<sup>2</sup> ... 6.0 mm<sup>2</sup>, lateral entry, trapezoidal crimp

# PTTB 2,5 - Double-level terminal block

3210567

<https://www.phoenixcontact.com/sg/products/3210567>

## CRIMPFOX 6T - Crimping pliers

1212037

<https://www.phoenixcontact.com/sg/products/1212037>



Crimping pliers, for ferrules without insulating collar according to DIN 46228 Part 1 and ferrules with insulating collar according to DIN 46228 Part 4, 0.25 mm<sup>2</sup> ... 6 mm<sup>2</sup>, lateral entry, trapezoidal crimp

---

## CRIMPFOX 6T-F - Crimping pliers

1212038

<https://www.phoenixcontact.com/sg/products/1212038>



Crimping pliers, for ferrules without insulating collar according to DIN 46228 Part 1 and ferrules with insulating collar according to DIN 46228 Part 4, 0.25 mm<sup>2</sup> ... 6 mm<sup>2</sup>, front entry, trapezoidal crimp



# PTTB 2,5 - Double-level terminal block



3210567

<https://www.phoenixcontact.com/sg/products/3210567>

## CRIMPFOX 6S-F - Crimping pliers

1212043

<https://www.phoenixcontact.com/sg/products/1212043>



Crimping pliers, for ferrules without insulating collar according to DIN 46228 Part 1 and ferrules with insulating collar according to DIN 46228 Part 4, 0.5 mm<sup>2</sup> ... 6 mm<sup>2</sup>, front entry, square crimp

---

## CRIMPFOX-M - Crimping pliers

1212072

<https://www.phoenixcontact.com/sg/products/1212072>



Basic pliers, for accommodating dies for a wide range of type of contacts

---

Phoenix Contact 2023 © - all rights reserved  
<https://www.phoenixcontact.com>

PHOENIX CONTACT SEA Pte. Ltd.  
105 Eunos Avenue 3, #04-00  
Singapore 409836  
+65 6228 4900  
[marketing@phoenixcontact.com.sg](mailto:marketing@phoenixcontact.com.sg)