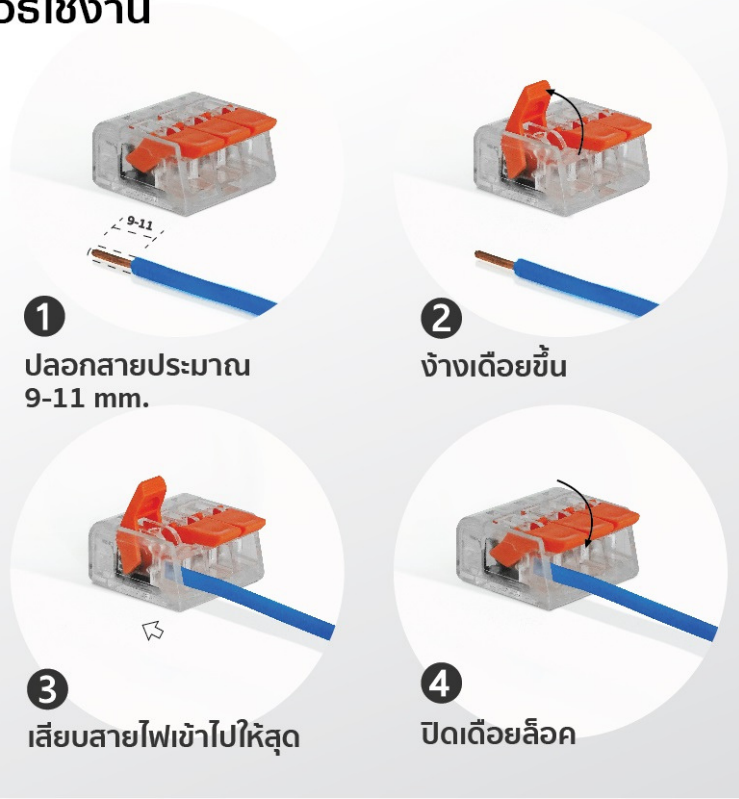


Push wire

PCT-413



วิธีใช้งาน



1
ปลอกสายประมาณ
9-11 mm.

2
ข้างเดียวขึ้น

3
เสียบสายไฟเข้าไปให้สุด

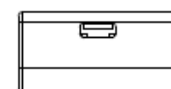
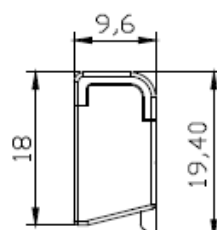
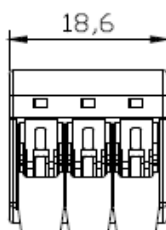
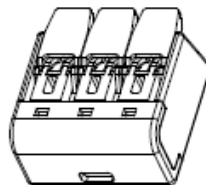
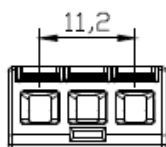
4
ปิดด้วยลิ้น



anxele®

SHANGHAI ANSON ELECTRIC TECHNOLOGY CO.,LTD.

Tolerance	Model	unit	mm		
0.000	PCT-413	Ratio	1:1	Custom date	2019.6.20
0.00					
0.0		±0.10			
0.		±			
angle		view			
		version	AO	Material	



Model	PCT-413
Product	Terminals
Voltage	450V
Ampere	32A
Wiring range	Hard wire 0.2mm ² ~4.0mm ² Cord wire 0.14mm ² ~2.5mm ²
Stripping length	10-12mm/0.47in
Temperature	-20°-105°
Hole position	3
Plastic material	PA6
Contact material	Copper
Spring material	Special Steel