

PLT-SEC-T3-BE-FM-UT - Type 3 surge protection base element

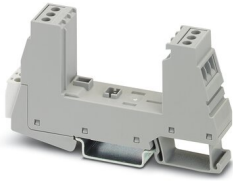


2907924

<https://www.phoenixcontact.com/us/products/2907924>

Please be informed that the data shown in this PDF document is generated from our Online Catalog. Please find the complete data in the user documentation. Our General Terms of Use for Downloads are valid.

Base element for protective plugs from the PLT-SEC-...-UT/PT product series with remote indication contact.



Commercial Data

Item number	2907924
Packing unit	1 pc
Minimum order quantity	1 pc
Sales Key	C06
Product Key	CL14A2
Catalog Page	Page 82 (C-4-2019)
GTIN	4055626257709
Weight per Piece (including packing)	52.4 g
Weight per Piece (excluding packing)	48 g
Customs tariff number	85363030
Country of origin	DE

PLT-SEC-T3-BE-FM-UT - Type 3 surge protection base element



2907924

<https://www.phoenixcontact.com/us/products/2907924>

Technical Data

Product properties

IEC power supply system	TN-S
	TT
Type	DIN rail module, two-section, divisible
Product type	Base element
Product family	SEC Family
Number of positions	2
Surge protection fault message	Remote indication contact

Insulation characteristics

Overvoltage category	III
Pollution degree	2
IEC test classification	II / III
	T2 / T3
EN type	T2 / T3
Number of ports	One

Electrical properties

Indicator/remote signaling

Connection name	Remote fault indicator contact
Switching function	Changeover contact
Operating voltage	250 V AC
	125 V DC (200 mA DC)
Operating current	0.5 A AC
	0.5 A DC (75 V DC)

Connection data

Connection method	Screw connection
Screw thread	M3
Tightening torque	0.5 Nm
Conductor cross section flexible	0.2 mm ² ... 2.5 mm ²
Conductor cross section solid	0.2 mm ² ... 4 mm ²
Conductor cross section AWG	24 ... 12

Dimensions

Dimensional drawing	
---------------------	--

PLT-SEC-T3-BE-FM-UT - Type 3 surge protection base element



2907924

<https://www.phoenixcontact.com/us/products/2907924>

Width	17.7 mm
Height	93.4 mm
Depth	51.5 mm (incl. DIN rail 7.5 mm)
Horizontal pitch	1 Div.

Material specifications

Color	light grey RAL 7035
	traffic grey A RAL 7042
Flammability rating according to UL 94	V-0
CTI value of material	600
Insulating material	PA 6.6-FR 20 % GF
	PA 6.6-FR
Housing material	PA 6.6-FR 20 % GF
	PA 6.6-FR

Mechanical properties

Mechanical data

Open side panel	No
-----------------	----

Protective circuit

Direction of action	1L-N & N-PE
Nominal voltage U_N	240 V AC (TN-S)
	240 V AC (TT)
Nominal frequency f_N	50 Hz (60 Hz)
Maximum continuous voltage U_C	264 V AC
Rated load current I_L	26 A (at 30 °C)
Short-circuit current rating I_{SCCR}	10 kA AC
Max. backup fuse with branch wiring	depends on the plug used

Additional technical data

Short-circuit current rating I_{SCCR}	max. 5 kA DC (depends on the plug used)
Maximum continuous voltage U_C	240 V DC

Environmental and real-life conditions

Ambient conditions

Degree of protection	IP20
Ambient temperature (operation)	-40 °C ... 80 °C
Ambient temperature (storage/transport)	-40 °C ... 80 °C
Altitude	≤ 2000 m (amsl (above mean sea level))
Permissible humidity (operation)	5 % ... 95 %
Shock (operation)	30g (Half-sine / 11 ms / 3x ±X, ±Y, ±Z)
Vibration (operation)	5g (5 ... 500 Hz / 2.5 h / X, Y, Z)

PLT-SEC-T3-BE-FM-UT - Type 3 surge protection base element



2907924

<https://www.phoenixcontact.com/us/products/2907924>

Approval data

UL specifications

Nominal voltage	240 V DC
Rated load current I_L	20 A
Power distribution system	Single phase
	DC
Nominal frequency	50/60 Hz
SPD Type	ACC

UL indicator/remote signaling

AC operating voltage	250 V AC (0.5 A)
DC operating voltage	12 V DC (4 A)
	24 V DC (2 A)
	48 V DC (1 A)

UL connection data

Tightening torque	4.4 lb _f -in.
Conductor cross section AWG	16 ... 12

Standards and regulations

Standards/specifications	IEC 61643-11
--------------------------	--------------

EN 61643-11

Standards/specifications	EN 61643-11
--------------------------	-------------

Mounting

Mounting type	DIN rail: 35 mm
---------------	-----------------

PLT-SEC-T3-BE-FM-UT - Type 3 surge protection base element

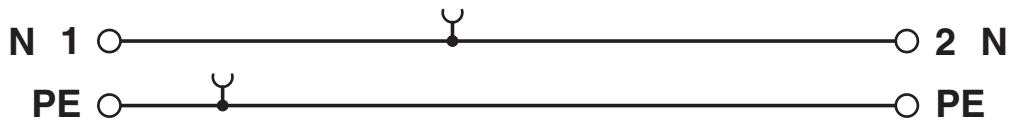
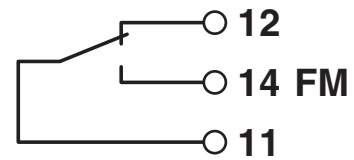


2907924

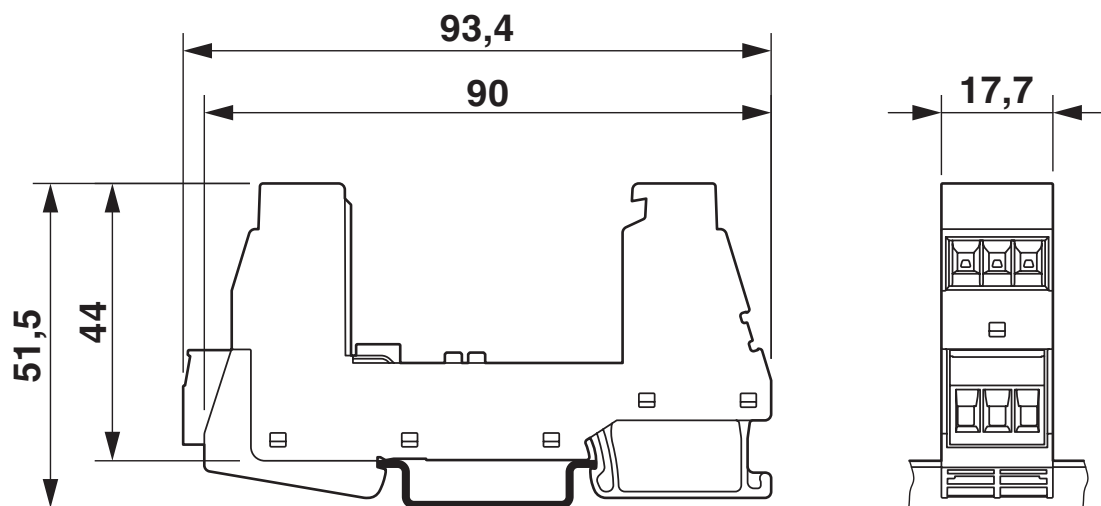
<https://www.phoenixcontact.com/us/products/2907924>

Drawings

Circuit diagram



Dimensional drawing



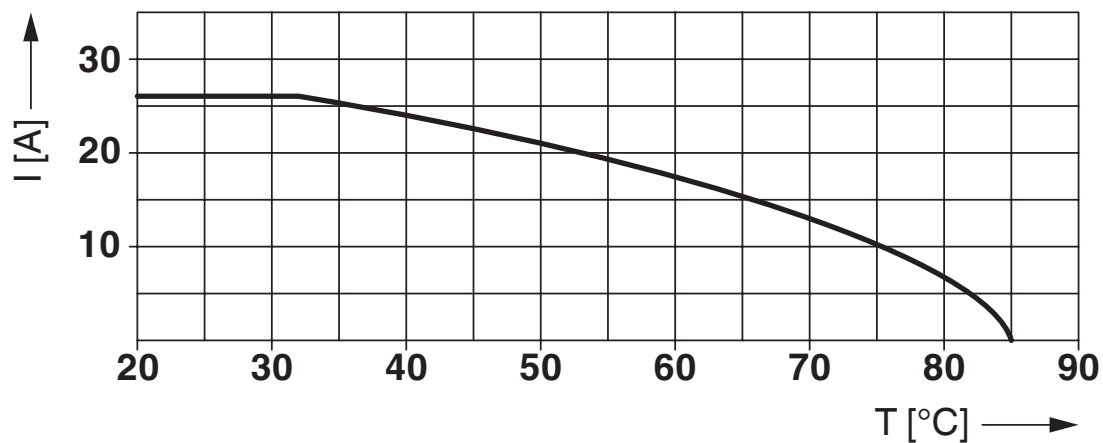
PLT-SEC-T3-BE-FM-UT - Type 3 surge protection base element



2907924

<https://www.phoenixcontact.com/us/products/2907924>

Diagram



Nominal current depending on ambient temperature

PLT-SEC-T3-BE-FM-UT - Type 3 surge protection base element



2907924

<https://www.phoenixcontact.com/us/products/2907924>

Approvals



cUL Recognized
Approval ID: FILE E 330181



UL Recognized
Approval ID: FILE E 330181



IECEE CB Scheme
Approval ID: NL-51083



EAC
Approval ID: RU C-DE.*09.B.00169

CCA

Approval ID: NTR-NL 7676

Nominal Voltage U_N

Nominal Current I_N

Cross Section AWG

Cross Section mm^2

-

-



KEMA-KEUR
Approval ID: 71-103027



DNV GL
Approval ID: TAE00002U7

Nominal Voltage U_N

Nominal Current I_N

Cross Section AWG

Cross Section mm^2

-

-



CSA
Approval ID: 13631



cUL Recognized
Approval ID: FILE E 340736

Nominal Voltage U_N

Nominal Current I_N

Cross Section AWG

Cross Section mm^2

-

-



UL Recognized
Approval ID: FILE E 340736

PLT-SEC-T3-BE-FM-UT - Type 3 surge protection base element



2907924

<https://www.phoenixcontact.com/us/products/2907924>

	Nominal Voltage U_N	Nominal Current I_N	Cross Section AWG	Cross Section mm^2
			-	-

cULus Recognized

cULus Recognized

PLT-SEC-T3-BE-FM-UT - Type 3 surge protection base element



2907924

<https://www.phoenixcontact.com/us/products/2907924>

Classifications

ECLASS

ECLASS-9.0	27130803
ECLASS-10.0.1	27130803
ECLASS-11.0	27130803

ETIM

ETIM 8.0	EC000472
----------	----------

UNSPSC

UNSPSC 21.0	39121600
-------------	----------

PLT-SEC-T3-BE-FM-UT - Type 3 surge protection base element



2907924

<https://www.phoenixcontact.com/us/products/2907924>

Environmental Product Compliance

China RoHS

Environmentally Friendly Use Period = 50 years

For information on hazardous substances, refer to the manufacturer's declaration available under "Downloads"

PLT-SEC-T3-BE-FM-UT - Type 3 surge protection base element

2907924

<https://www.phoenixcontact.com/us/products/2907924>

Accessories

PLT-SEC-T3-24-P-UT/PT - Type 3 surge protection plug

2907920

<https://www.phoenixcontact.com/us/products/2907920>



Replacement plug for type 3 surge protection from the PLT-SEC-...-UT/PT product series. Nominal voltage 24 V.

PLT-SEC-T3-60-P-UT/PT - Type 3 surge protection plug

2907921

<https://www.phoenixcontact.com/us/products/2907921>



Replacement plug for type 3 surge protection from the PLT-SEC-...-UT/PT product series. Nominal voltage 60 V.

PLT-SEC-T3-BE-FM-UT - Type 3 surge protection base element



2907924

<https://www.phoenixcontact.com/us/products/2907924>

PLT-SEC-T3-120-P-UT/PT - Type 3 surge protection plug

2907922

<https://www.phoenixcontact.com/us/products/2907922>



Replacement plug for type 2/3 surge protection from the PLT-SEC-...-UT/PT product series. Nominal voltage 120 V.

PLT-SEC-T3-230-P-UT/PT - Type 3 surge protection plug

2907923

<https://www.phoenixcontact.com/us/products/2907923>



Replacement plug for type 2/3 surge protection from the PLT-SEC-...-UT/PT product series. Nominal voltage 230 V.

Phoenix Contact 2023 © - all rights reserved

<https://www.phoenixcontact.com>

Phoenix Contact USA
586 Fulling Mill Road
Middletown, PA 17057, United States
(+717) 944-1300
info@phoenixcon.com