

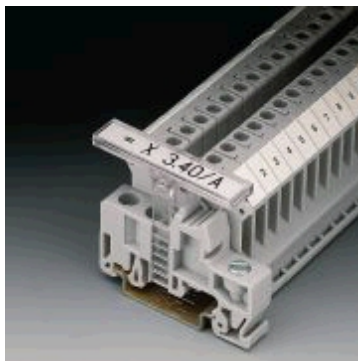
KLM-A

Description	Type	Order No.	Pcs. Pkt.
Terminal strip marker set, for strip marking, adjustable height, for use with end clamps E/UK, E/UK-NS 35, E/NS 35 N, insert strip ES/KLM 2-GB, can be labelled with M-PEN or CMS system, lettering area: 44 x 7 mm	• KLM-A + ES/KLM 2-GB	10 04 32 2	50
Terminal strip marker, as above, however, without insert strip ES/KLM 2-GB	KLM-A	10 04 34 8	100
Large format insert strip, perforated, DIN A 4, for terminal strip markers KLM-A, lettering area: 44 x 7 mm	120-section • ES/KLM 2-GB	08 00 95 4	10
Large format plastic insert strip, perforated, for terminal strip marker KLM-A, lettering area: 44 x 7 mm	150-section • ESK/KLM 2-GB	08 00 17 4	10

Technical data

Material of base element	SAN
Inflammability class acc. to UL 94	–
Temperature range RTI / Ti:	[°C] – 40 to + 80
Color	transparent
Material of insert strip	cardboard or polyethylene
Color	white

• = can be labelled with CMS



KLM-A + ES/KLM 2-GB