



Product Specifications



1FAAM0458601

CONTROLLER C200 TOP ASSEMBLY

ATEX 3D DP 10 WAY

Top Assembly C200 ATEX 3D Controller, DeltaP integrated with 10 way valve outlet; Special features: (1) 4-20 mA output, (1) 4-20 mA input, (2) programmable digital inputs, (2) programmable relay outputs, Specifications: AC supply: 110/230 V, DC supply: 24 V, Operating frequency: 50/60 Hz, Protection rating: IP-66 for different brands of collectors

Other Information

UNSPSC Code

40161526

The information contained herein is general in nature and may not reflect actual information regarding the part at time of shipment. Parts may originate in more than one country – the actual country of origin and HS Code will be reflected on the Commercial Invoice(s) that accompanies the goods.

FEATURES

- Pilot box intended for use in potentially explosive dusty atmospheres, according to Directive ATEX 2014/34/EU
- Compliance with the Essential Health and Safety Requirements has been assured by European Standards EN 50014, EN 50281-1-1 and EN 13463-1
- Containing 4 to 6 valves, 2/2 normally closed, direct operated
- Pilot valves are assembled in base plate
- Heating element for trouble free operation at low ambient temperatures
- Class of protection: IP65
- The components satisfy all relevant EC directives

GENERAL

Differential pressure (PS) 0 - 7 bar [1 bar = 100kPa]

Response times 5 - 25 ms

fluid	temperature range (TS)	seal material
air	-20 to +80°C	NBR (nitrile)

CONSTRUCTION

Base-plate	Steel (zinc plated)
Cover	Aluminium
Core tube	Stainless steel
Core and plugnut	Stainless steel
Spring	Stainless steel
Disc	NBR (nitrile)
Pilot body	Brass
Shading coil	Copper
Coil insulation class	F
Electrical connection	Coil with screw terminal

ELECTRICAL CHARACTERISTICS

Standard voltages DC (=) 24V
AC (~) 24V - 115V - 230V/50Hz

coil type	nominal power ratings				ambient temperature range (°C)	protection	replacement coil	
	inrush	holding		hot/cold			~	=
	(VA)	(VA)	(W)	(W)			230 V/50 Hz	24 V DC
SMXX-FB	56	35	16,7	-	0 to +85	moulded IP65	400405-217	-
SMXX-FI (1)	-	-	-	30			-	400405-642

TEMPERATURE CLASSIFICATION TABLES

AC (~) Solenoids

power level (watt)	isolation class	maximum ambient °C surface temperature		
		85°C	100°C	135°C
16,7	F	40°C	60°C	75°C

DC (=) Solenoids

power level (watt)	isolation class	maximum ambient °C surface temperature		
		85°C	100°C	135°C
30,0	F	40°C	60°C	75°C

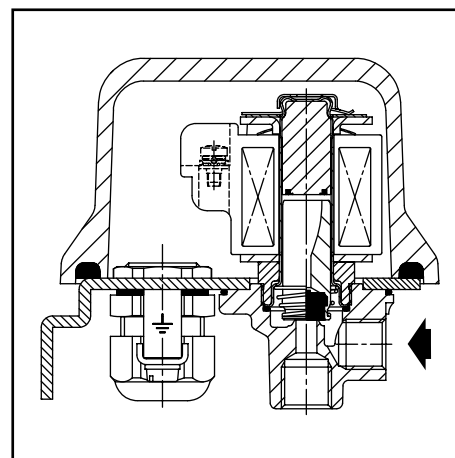
SPECIFICATIONS

number of pilot valves	pipe size	orifice size	flow coefficient kv		operating pressure differential (bar)		catalogue number (2)	
					min.	maximum (PS)	without heating	with 1 heating element (3)
						air ~/=		
4	Rp	(mm)	(m³/h)	(l/min)	0	7	DU C204-220 DU C205-220 DU C206-220	DU C204-221 DU C205-221 DU C206-221
5								
6								

(1) Intermittent duty, Relative Duty Time is 10%. Max on time 1 min.

(2) Without heating elements: minimum ambient temperature 0°C; with one heating element: -15°C

(3) Heating element: refer to "Ordering Information". Heating element rating: 80 watt.



OPTIONS

- Heating element for low ambient temperatures -40°C
- Special customer adapted executions on request

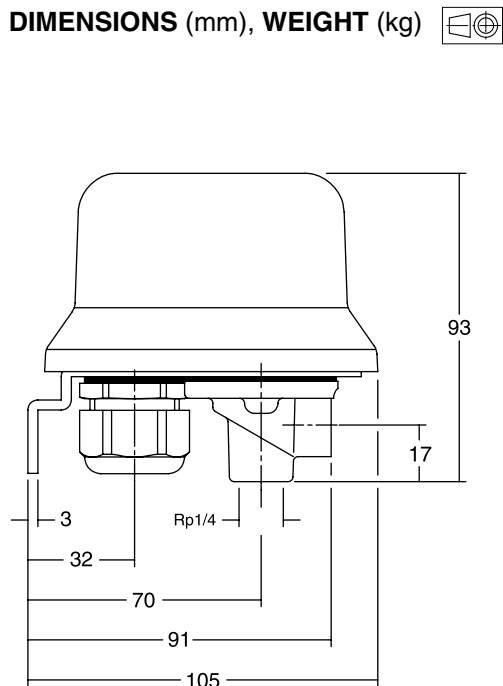
INSTALLATION

- The pilot boxes can be mounted in any position without affecting operation
- Pipe connections are: Rp 1/4 according to ISO 7/1 for pilot connection
- Cable entries: control cable on box : cable Ø 9 - 16 mm
connection cable heating element : cable Ø 7 - 12 mm
- Spare parts kit and replacement coils are available

SPARE PARTS KITS

catalogue number	Spare parts kit no.	
	~	=
DUC204.220/221	C112838	C112682
DUC205.220/221		
DUC206.220/221		

DIMENSIONS (mm), WEIGHT (kg)



ORDERING INFORMATION

DU C20 6 - 2 2 0 230/50

Volts / Hz

Optional execution

0 = no heating element
1 = element with same voltage as coils. If coil voltage deviates from heating element voltage, please consult us for exact codification

Pipe size Rp 1/4

Coil type only SMXX

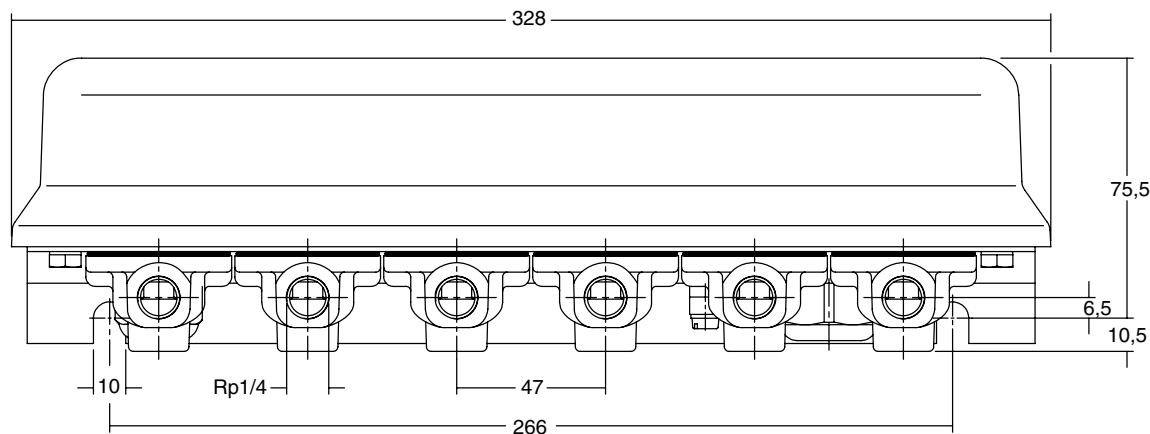
Change letter

Number of pilots

4 = 4 pilot valves
5 = 5 pilot valves
6 = 6 pilot valves

Basic number C20

Approval according to
Directive ATEX 2014/34/EU



pipe connections	weight
C204	3,7
C205 Rp 1/4	4,1
C206	4,6