

Enclosure: Junction Boxes (Empty), WJB Series

Weatherproof

IP65



Application

The WJB junction boxes are designed

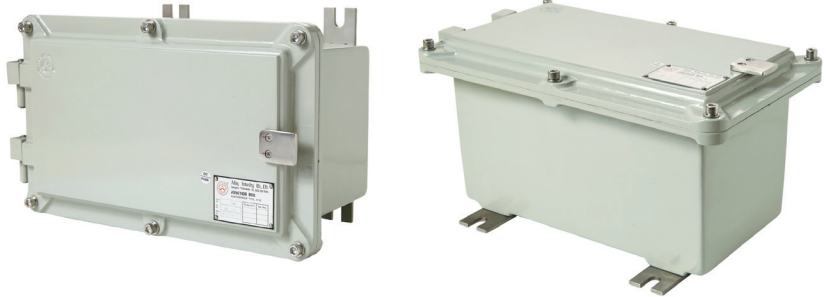
- to provide openings for taps, splices or pull box.
- to enclose terminals, meters, relays or other electrical devices.
- for indoor and outdoor in wet and corrosive locations.

Technical Data

Protection	Weatherproof
Index of Protection	IP65
Ambient Temperature	-20 °C to +55 °C
Mounting	Wall mount

Specification

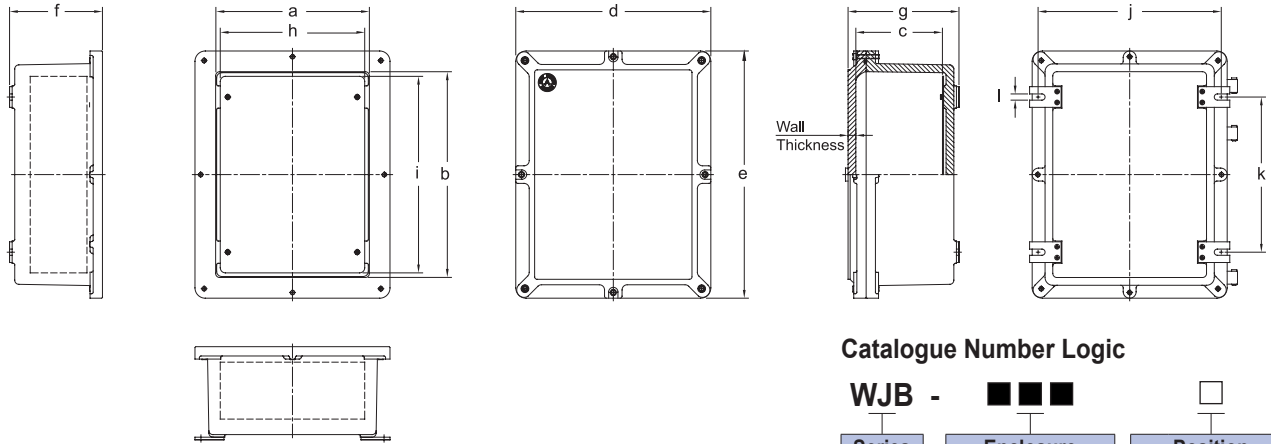
Body, cover : Marine grade copper-free aluminium alloy with polyester powder coated, RAL 7032 (Grey)
Lid screws : Stainless steel, SUS 304
Sealing gasket : Silicone



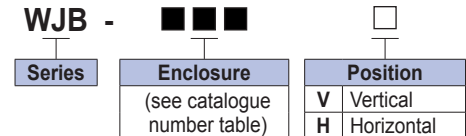
Electrical Rating

Rated voltage : up to 800V.ac
(as per equipment specification)

Ordering Requirements and Dimension



Catalogue Number Logic



Cat. No.	Dimension in mm.												Max. Entries		Empty Weight (kgs.)	
	Inside			Outside			Equip. Plate		Mounting			NPT	Metric			
	a	b	c	d	e	f	g	h	i	j	k			l		
WJB 685	□	96	147	111	147	204	113	135	90	145	128	100	7.5	Ø1-1/4"	M40x1.5	2.61
WJB 885		133	133	109	205	205	107	134	115	115	176	90	12	Ø1-1/4"	M40x1.5	2.76
WJB 8125	□	131	235	100	205	310	102	125	115	220	185	160	12	Ø1-1/4"	M40x1.5	4.45
WJB 8126	□	130	235	120	205	310	122	145	115	220	185	160	12	Ø1-1/2"	M50x1.5	4.65
WJB 9157	□	158	309	175	228	381	172	198	150	295	211	230	12	Ø1-1/2"	M50x1.5	7.77
WJB 11218	□	203	445	173	285	525	183	220	195	435	260	350	12	Ø2"	M63x1.5	25.00
WJB 12127		240	240	146	315	315	155	190	235	235	295	170	12	Ø2"	M63x1.5	15.00
WJB 15156		308	308	108	375	375	112	140	280	280	358	240	12	Ø1-1/4"	M40x1.5	10.26
WJB 15196	□	296	397	133	375	475	142	164	280	380	333	300	12	Ø1-1/4"	M40x1.5	11.40
WJB 15198	□	294	394	170	378	478	180	215	280	380	355	300	12	Ø2"	M63x1.5	32.00
WJB 162810	□	318	615	224	401	698	223	270	300	595	380	450	12	Ø3"	M75x1.5	35.75
WJB 202410	□	422	522	204	505	605	214	261	405	510	505	450	15	Ø3"	M75x1.5	50.05
WJB 20329	□	418	707	200	510	800	211	255	405	690	510	335	15	Ø3"	M75x1.5	73.00
WJB 284411	□	586	986	225	710	1110	227	286	580	950	700	400	15	Ø3"	M75x1.5	164.00

