

Cable Fitting: Accessories for Cable Glands, Lock Nut/ Earth Tag/ Shroud/ Entries Thread Seal

Flameproof and Dust protection by enclosure

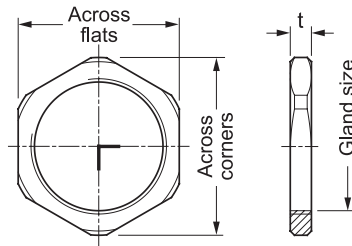
Zone 1 & 2 – 21 & 22



Lock Nut

Lock nuts are used to secure the cable gland body to the gland plate or the enclosure which are less thick.

- Material : Brass
(Nickel-plated is available upon request)



Ordering Requirements

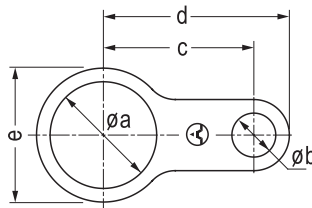
Cat. No.	Gland Size	Dimension in mm.			Approx. Weight (kgs.)
		Across Corners	Across Flats	Thk. 't'	
LNB-M16	M16x1.5	22.0	24.5	5.0	0.012
LNB-M20	M20x1.5	27.0	30.0	5.0	0.014
LNB-M25	M25x1.5	31.0	34.0	5.0	0.016
LNB-M32	M32x1.5	38.1	42.0	7.0	0.028
LNB-M40	M40x1.5	50.8	56.0	7.0	0.036
LNB-M50	M50x1.5	63.5	70.0	7.0	0.058
LNB-M63	M63x1.5	76.2	84.0	7.0	0.090
LNB-M75	M75x1.5	89.0	99.0	10.0	0.101
LNB-N1	1/2" NPT	27.0	30.0	5.0	0.156
LNB-N2	3/4" NPT	31.0	34.0	5.0	0.015
LNB-N3	1" NPT	38.1	42.0	7.0	0.026
LNB-N4	1-1/4" NPT	50.8	56.0	7.0	0.053
LNB-N5	1-1/2" NPT	63.5	70.0	7.0	0.058
LNB-N6	2" NPT	76.2	84.0	7.0	0.106
LNB-N7	2-1/2" NPT	89.0	99.0	10.0	0.138

NPT threads are also available upon request.

Earth Tag

Earth tags are installed between the cable gland and equipment to provide an earth/bond connection.

- Material : Brass
(Nickel-plated is available upon request)



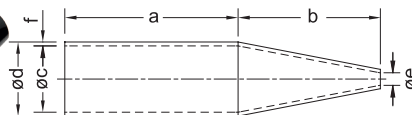
Ordering Requirements

Cat. No.	Dimension in mm.					Thk.
	øa	øb	c	d	e	
DET-0	16.5	6.75	30.0	36.5	22.0	1.5
DET-1	21.5	7.0	33.0	39.6	27.0	1.5
DET-2	26.5	10.5	36.0	44.5	38.0	1.5
DET-3	33.0	12.2	41.0	51.0	44.0	1.5
DET-4	41.5	13.5	44.5	60.0	50.0	1.5
DET-5	51.0	13.5	58.0	80.0	63.0	1.5
DET-6	64.0	13.5	67.0	86.0	76.0	1.5
DET-7	76.0	13.5	73.0	94.0	89.0	1.5
DET-8	91.0	13.5	84.5	103.0	101.0	2.5
DET-9	101.0	13.5	96.0	114.0	114.0	2.5
DET-10	113.0	13.5	108.0	126.0	127.0	2.5

Shroud

The shrouds are used to minimise the risk of dirt or foreign substances gathering on the cable gland body.

- Material : PVC DIP moulded (black)



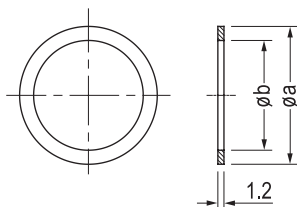
Ordering Requirements

Cat. No.	Dimension in mm.					
	a	b	øc	ød	øe	f
SPV-24	74.0	50.0	24.5	28.1	3.0	1.8
SPV-31	77.0	55.0	32.5	36.1	6.5	1.8
SPV-38	85.0	60.0	39.5	43.1	11.1	1.8
SPV-44	91.0	65.0	46.0	49.6	17.0	1.8
SPV-50	96.0	70.0	53.0	56.6	22.0	1.8
SPV-57	99.0	75.0	60.0	63.6	29.5	1.8
SPV-63	101.0	80.0	66.5	70.1	35.6	1.8
SPV-70	57.0	80.0	73.5	77.1	35.6	1.8
SPV-76	102.0	85.0	79.5	83.1	39.0	1.8
SPV-88	55.0	85.0	94.5	98.1	39.0	1.8

Entries Thread Seal

Entries thread seal are used between the cable gland and enclosure interface to maintain the ingress protection rating of equipment.

- Material : Nylon (PA6)



Ordering Requirements

Cat. No.	Dimension in mm.		Approx. Weight (kgs.)
	øa	øb	
GK-0	22.0	16.0	0.001
GK-1	27.0	21.5	0.001
GK-2	32.0	26.6	0.001
GK-3	39.0	33.0	0.002
GK-4	47.5	41.5	0.002
GK-5	58.0	50.0	0.002
GK-6	71.0	63.0	0.002
GK-7	84.0	75.0	0.003
GK-8	101.0	91.0	0.003
GK-9	113.0	101.0	0.004
GK-10	126.0	114.0	0.004

