



Application

The DTR terminal boxes are designed for spliced and tapped conductors or connecting of conductor for control and instrument. These boxes are suitable for explosive atmospheres Zone 1, 2 and Zone 21, 22.

Specification

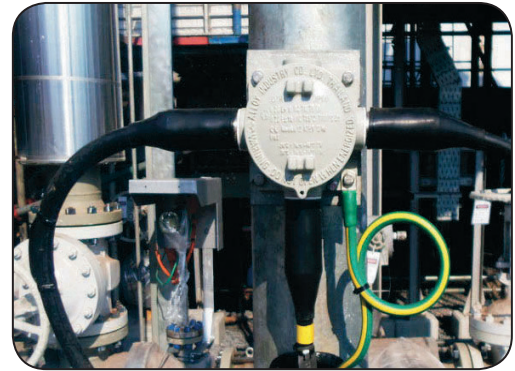
- Body and cover : Marine grade copper-free aluminium alloy with polyester powder coated, RAL 7032 (grey)
- Sealing (O-ring) : Silicone
- Screws : Stainless steel, SUS 304

Electrical Rating

- Rated voltage : up to 630V.ac
 - Rated current : up to 41A.
- (as per terminal specification)

Technical Data

Hazardous Area	Gas	Dust
Zones	1 & 2	21 & 22
Equipment Group/Category	II 2G	II 2D
Symbol of Protection	Ex d IIC T6/T5 Gb	Ex tb IIIC T80°C/ T100°C Db IP66
Certificate	Nemko 12 ATEX 1249	
Conformity to Standards	EN 60079-0:2009, EN 60079-1:2007, EN 60079-31:2009	
Ambient Temperature	-20°C to +55°C	
Index of Protection	IP66	
Mounting	Wall type	
Entries	NPT or Metric thread	
Terminal	Terminal block for 0.5- 6 mm. ² cable	
Mechanical resistance	≥7Nm. of impact energy	



Catalogue Number Logic

DTR - ■ - ■ - ■ - □ T

Series	Enclosure	Outline Diagram	Entries	Terminals
1	Size 1	C 2-ways Through-feed	M0 M16x1.5 N1 Ø1/2" NPT	2T 2-Poles
2	Size 2	L 2-ways Angle	M1 M20x1.5 N2 Ø3/4" NPT	3T 3-Poles
3	Size 3	T 3-ways	M2 M25x1.5 N3 Ø1" NPT	4T 4-Poles
		X 4-ways	M3 M32x1.5 N4 Ø1-1/4" NPT	5T 5-Poles
			M4 M40x1.5 N5 Ø1-1/2" NPT	6T 6-Poles
			M5 M50x1.5 N6 Ø2" NPT	8T 8-Poles
			M6 M63x1.5	10T 10-Poles

(see terminal selection chart)



Terminal Selection Chart

TB Model	Rated Current	Rated Voltage	Wire Size	Maximum Numbers of Terminals (Respective to the Temperature Class)		
				Size 1 (DTR-1 □)	Size 2 (DTR-2 □)	Size 3 (DTR-3 □)
DR4/6.Ex	30A.	275V.	0.5 - 4.0 mm. ²	6-Poles	8-Poles	10-Poles
ZS4	32A.	630V.	0.5 - 4.0 mm. ²	3-Poles	5-Poles	8-Poles
ZS6	41A.	630V.	0.5 - 6.0 mm. ²	-	-	6-Poles



Enclosure: Terminal Boxes, DTR Series

Flameproof and Dust protection by enclosure

Zone 1 & 2 – 21 & 22

Maximum Number of Terminal Permitted for Load Current

Current (A)	Cross-section in mm. ² DTR1-□				
	1.5	2.5	4	6	10
30			8	16	
10	34	In this area any number of terminals can be added to maximum physical content.			
16	11	22	87		
20	4	13	25		
25		6	14	27	
35	Fitting in this area is not allowed.				27
50	Fitting in this area is not allowed.				8

Current (A)	Cross-section in mm. ² DTR2-□				
	1.5	2.5	4	6	10
30			9	19	
10	39	In this area any number of terminals can be added to maximum physical content.			
16	13	26	102		
20	5	15	29		
25		7	16	32	
35	Fitting in this area is not allowed.				31
50	Fitting in this area is not allowed.				10

Current (A)	Cross-section in mm. ² DTR3-□				
	1.5	2.5	4	6	10
30		2	12	23	
10	48	In this area any number of terminals can be added to maximum physical content.			
16	16	32	125		
20	6	18	36		
25		9	20	39	
35	Fitting in this area is not allowed.				38
50	Fitting in this area is not allowed.				2

Ordering Requirements

Entries		Outline Diagram for Entries	Enclosure Size	Cat. No. *		
Metric	NPT					
M16x1.5			Size 1	DTR-1C-M0-□ T		
M20x1.5				DTR-1C-M1-□ T		
M25x1.5				DTR-1C-M2-□ T		
				∅1/2"	DTR-1C-N1-□ T	
				∅3/4"	DTR-1C-N2-□ T	
M32x1.5				Size 2	DTR-2C-M3-□ T	
M40x1.5					DTR-2C-M4-□ T	
					∅1"	DTR-2C-N3-□ T
					∅1-1/4"	DTR-2C-N4-□ T
M50x1.5					Size 3	DTR-3C-M5-□ T
M63x1.5		DTR-3C-M6-□ T				
		∅1-1/2"				DTR-3C-N5-□ T
	∅2"	DTR-3C-N6-□ T				

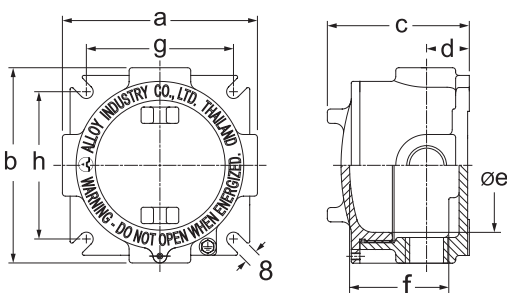
Entries		Outline Diagram for Entries	Enclosure Size	Cat. No. *		
Metric	NPT					
M16x1.5			Size 1	DTR-1L-M0-□ T		
M20x1.5				DTR-1L-M1-□ T		
M25x1.5				DTR-1L-M2-□ T		
				∅1/2"	DTR-1L-N1-□ T	
				∅3/4"	DTR-1L-N2-□ T	
M32x1.5				Size 2	DTR-2L-M3-□ T	
M40x1.5					DTR-2L-M4-□ T	
					∅1"	DTR-2L-N3-□ T
					∅1-1/4"	DTR-2L-N4-□ T
M50x1.5					Size 3	DTR-3L-M5-□ T
M63x1.5		DTR-3L-M6-□ T				
		∅1-1/2"				DTR-3L-N5-□ T
	∅2"	DTR-3L-N6-□ T				

Entries		Outline Diagram for Entries	Enclosure Size	Cat. No. *		
Metric	NPT					
M16x1.5			Size 1	DTR-1T-M0-□ T		
M20x1.5				DTR-1T-M1-□ T		
M25x1.5				DTR-1T-M2-□ T		
				∅1/2"	DTR-1T-N1-□ T	
				∅3/4"	DTR-1T-N2-□ T	
M32x1.5				Size 2	DTR-2T-M3-□ T	
M40x1.5					DTR-2T-M4-□ T	
					∅1"	DTR-2T-N3-□ T
					∅1-1/4"	DTR-2T-N4-□ T
M50x1.5					Size 3	DTR-3T-M5-□ T
M63x1.5		DTR-3T-M6-□ T				
		∅1-1/2"				DTR-3T-N5-□ T
	∅2"	DTR-3T-N6-□ T				

Entries		Outline Diagram for Entries	Enclosure Size	Cat. No. *		
Metric	NPT					
M16x1.5			Size 1	DTR-1X-M0-□ T		
M20x1.5				DTR-1X-M1-□ T		
M25x1.5				DTR-1X-M2-□ T		
				∅1/2"	DTR-1X-N1-□ T	
				∅3/4"	DTR-1X-N2-□ T	
M32x1.5				Size 2	DTR-2X-M3-□ T	
M40x1.5					DTR-2X-M4-□ T	
					∅1"	DTR-2X-N3-□ T
					∅1-1/4"	DTR-2X-N4-□ T
M50x1.5					Size 3	DTR-3X-M5-□ T
M63x1.5		DTR-3X-M6-□ T				
		∅1-1/2"				DTR-3X-N5-□ T
	∅2"	DTR-3X-N6-□ T				

* Replace □ with number of terminals (see terminal selection chart)

Dimension



Enclosure Size	Dimension in mm.								Approx. Weight (kgs.)
	a	b	c	d	øe	f	g	h	
Size 1	114	114	83	25	88	58	86	86	0.98
Size 2	124	124	99	34	98	72	96	96	1.65
Size 3	144	144	121	43.5	118	94	123	123	2.35