

# Signal and Alarm: Smoke Detector (Photoelectric sensor), DSM Series

Intrinsic Safety and Dust protection by enclosure

Zone 1 & 2 – 22

## Application

Smoke detector is a sensitive yet rugged protection device that is designed for use in hazardous areas for zone 1, 2.

## Specification

Body : Cast aluminium with polyester powder coated  
Bolts : Stainless steel, SUS 304

## Electrical Rating

Operating temp. range : 32°F to 120°F (0°C to 50°C)  
Operating humidity range : 10% to 93% Relative Humidity, Noncondensing  
Alarm current : 10-130mA.\*\*  
85µA Standby  
Loop type : 2-wire\*  
Sensitivity : 1 - 3.18%/ft.

\* Functionality contingent on panel compatibility.

\*\* Must be limited by control panel.

## Technical Data

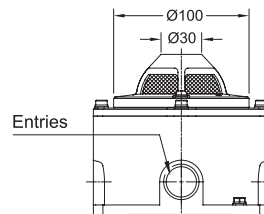
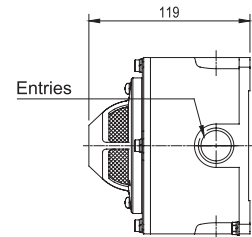
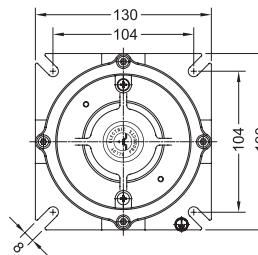
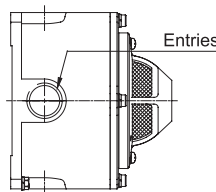
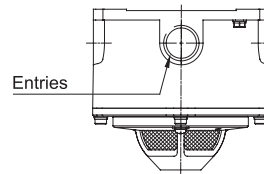
<b>Hazardous Area</b>	<b>Gas</b>	<b>Dust</b>
<b>Zones</b>	<b>1 &amp; 2</b>	<b>22</b>
<b>Equipment Group/Category</b>	<b>II 2G</b>	<b>II 3D</b>
<b>Symbol of Protection</b>	<b>Ex db ia IIC T6 Gb</b>	<b>Ex tc IIIB T80°C Dc IP54</b>
<b>Conformity to Standards</b>	EN 60079-0:2012+A11:2013, EN 60079-1:2014, EN 60079-11:2012, EN 60079-31:2014	
<b>Ambient Temperature</b>	-20°C to +50°C	
<b>Index of Protection</b>	IP54 (Applicable to ceiling mount only)	
<b>Mounting</b>	Ceiling mount	
<b>Operating Voltage</b>	12/24V.dc	

## Catalogue Number Logic

DSM - ■ - ■■

Series	Outline Diagram	Entries	
C	2-ways Through-feed	M1	M20x1.5 N1 Ø1/2" NPT
L	2-ways Angle	M2	M25x1.5 N2 Ø3/4" NPT
T	3-ways		
X	4-ways		

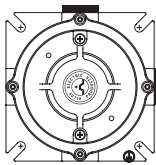
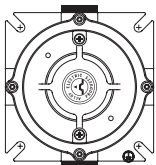
## Dimension



## Outline Diagram

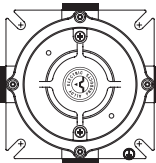
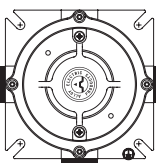
2-ways Through-feed

2-ways Angle

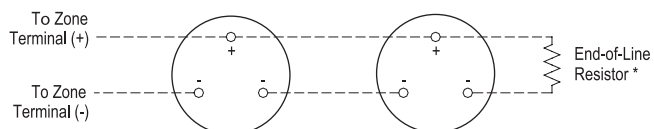


3-ways

4-ways



## Detector to Detector Circuit



\* See specification of Fire Alarm Control Panel