

Enclosure: Conduit Outlet Bodies (Rectangular Box), DSB Series

Flameproof and Dust protection by enclosure

Zone 1 & 2 – 21 & 22



Application

The DSB rectangular boxes are designed for use in the conduit system in hazardous areas, zone 1, 2 and 21, 22

- to provide opening for taps, splices or pull outlet for conductors.
- to provide an access to conduit system for maintenance.
- to change conduit direction.
- to use with threaded rigid steel conduit (RSC) or intermediate metal conduit (IMC).

Specification

Body, cover : Marine grade copper-free aluminium alloy with polyester powder coated, RAL 7032 (Grey)
Lid screws : Stainless steel, SUS 304

Technical Data

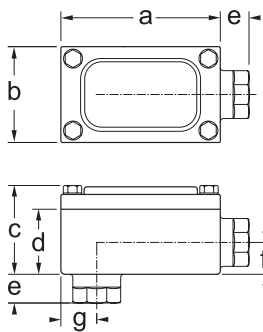
Hazardous Area	Gas	Dust
Zones	1 & 2	21 & 22
Equipment Group/Category	Ex II 2G	Ex II 2D
Symbol of Protection	Ex db IIB Gb	Ex tb IIIC Db IP65
Certificate	TÜV CY 16 ATEX 0205813 U	
Conformity to Standards	EN 60079-0:2012+A11:2013, EN 60079-1:2014, EN 60079-31:2014	
Ambient Temperature	-20°C to +55°C	
Index of Protection	IP65 (Grease to increase protection) *	

* Recommended "alloy PG1 performance grease" for protect flameproof joint against corrosion and increase the level of the degree of protection.



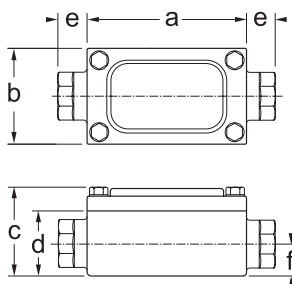
Ordering Requirements and Dimension

DSBB : 2-Ways Angle (Bottom)



Entries	Cat. No.	Volume (dm ³)	Dimension in mm.							Approx. Weight (kgs.)
			a	b	c	d	e	f	g	
Ø1/2" NPT	DSBB 1	0.11	100.0	44.0	56.0	43.0	20.0	20.0	20.0	0.47
Ø3/4" NPT	DSBB 2	0.18	110.0	50.0	62.0	49.0	20.0	22.0	25.0	0.59
Ø1" NPT	DSBB 3	0.36	130.5	60.0	76.5	61.0	24.0	24.0	27.0	0.95
Ø1-1/4" NPT	DSBB 4	0.58	144.0	65.0	88.5	73.0	24.5	32.5	33.5	1.25
Ø1-1/2" NPT	DSBB 5	0.80	161.0	70.0	95.5	78.5	26.5	35.0	43.0	1.64
Ø2" NPT	DSBB 6	1.95	200.0	111.0	121.5	104.5	25.0	46.0	45.0	3.20
Ø2-1/2" NPT	DSBB 7	3.40	231.0	128.0	153.0	133.0	32.0	66.5	55.0	4.55
Ø3" NPT	DSBB 8	4.90	262.0	142.0	162.0	142.0	34.0	71.0	60.0	5.71
Ø3-1/2" NPT	DSBB 9	8.60	311.0	174.0	197.0	173.0	35.5	77.0	78.0	8.55
Ø4" NPT	DSBB 10	8.95	311.0	174.0	197.0	173.0	36.0	77.0	78.0	8.85

DSBC : 2-Ways Through-feed



Entries	Cat. No.	Volume (dm ³)	a	b	c	d	e	f	g	Approx. Weight (kgs.)
			Ø1/2" NPT	DSBC 1	0.11	100.0	44.0	56.0	43.0	
Ø3/4" NPT	DSBC 2	0.18	110.0	50.0	62.0	49.0	20.0	22.0	--	0.59
Ø1" NPT	DSBC 3	0.36	130.5	60.0	76.5	61.0	24.0	24.0	--	0.95
Ø1-1/4" NPT	DSBC 4	0.58	144.0	65.0	88.5	73.0	24.5	32.5	--	1.25
Ø1-1/2" NPT	DSBC 5	0.80	161.0	70.0	95.5	78.5	26.5	35.0	--	1.64
Ø2" NPT	DSBC 6	1.95	200.0	111.0	121.5	104.5	25.0	46.0	--	3.20
Ø2-1/2" NPT	DSBC 7	3.40	231.0	128.0	153.0	133.0	32.0	66.5	--	4.55
Ø3" NPT	DSBC 8	4.90	262.0	142.0	162.0	142.0	34.0	71.0	--	5.71
Ø3-1/2" NPT	DSBC 9	8.60	311.0	174.0	197.0	173.0	35.5	77.0	--	8.55
Ø4" NPT	DSBC 10	8.95	311.0	174.0	197.0	173.0	36.0	77.0	--	8.85



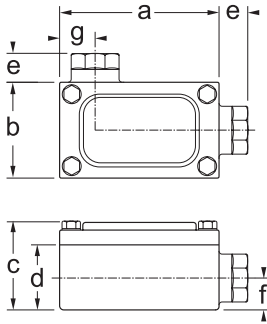
Enclosure: Conduit Outlet Bodies (Rectangular Box), DSB Series

Flameproof and Dust protection by enclosure

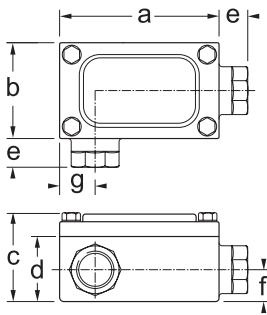
Zone 1 & 2 – 21 & 22

Ordering Requirements and Dimension

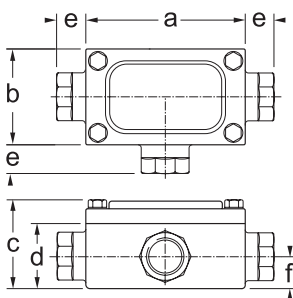
DSBL : 2-Ways Angle (Left)



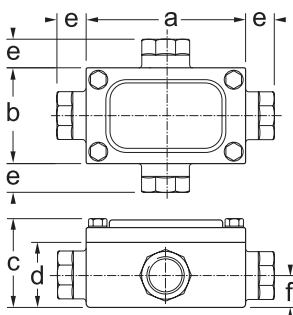
DSBR : 2-Ways Angle (Right)



DSBT : 3-Ways



DSBX : 4-Ways



Entries	Cat. No.	Volume (dm ³)	Dimension in mm.							Approx. Weight (kgs.)
			a	b	c	d	e	f	g	
Ø1/2" NPT	DSBL 1	0.11	100.0	44.0	56.0	43.0	20.0	20.0	20.0	0.47
Ø3/4" NPT	DSBL 2	0.18	110.0	50.0	62.0	49.0	20.0	22.0	25.0	0.59
Ø1" NPT	DSBL 3	0.36	130.5	60.0	76.5	61.0	24.0	24.0	27.0	0.95
Ø1-1/4" NPT	DSBL 4	0.58	144.0	65.0	88.5	73.0	24.5	32.5	33.5	1.25
Ø1-1/2" NPT	DSBL 5	0.80	161.0	70.0	95.5	78.5	26.5	35.0	43.0	1.64
Ø2" NPT	DSBL 6	1.95	200.0	111.0	121.5	104.5	25.0	46.0	45.0	3.20
Ø2-1/2" NPT	DSBL 7	3.40	231.0	128.0	153.0	133.0	32.0	66.5	55.0	4.55
Ø3" NPT	DSBL 8	4.90	262.0	142.0	162.0	142.0	34.0	71.0	60.0	5.71
Ø3-1/2" NPT	DSBL 9	8.60	311.0	174.0	197.0	173.0	35.5	77.0	78.0	8.55
Ø4" NPT	DSBL 10	8.95	311.0	174.0	197.0	173.0	36.0	77.0	78.0	8.85

			a	b	c	d	e	f	g		
Ø1/2" NPT	DSBR 1	0.11	100.0	44.0	56.0	43.0	20.0	20.0	20.0	0.47	
Ø3/4" NPT	DSBR 2	0.18	110.0	50.0	62.0	49.0	20.0	22.0	25.0	0.59	
Ø1" NPT	DSBR 3	0.36	130.5	60.0	76.5	61.0	24.0	24.0	27.0	0.95	
Ø1-1/4" NPT	DSBR 4	0.58	144.0	65.0	88.5	73.0	24.5	32.5	33.5	1.25	
Ø1-1/2" NPT	DSBR 5	0.80	161.0	70.0	95.5	78.5	26.5	35.0	43.0	1.64	
Ø2" NPT	DSBR 6	1.95	200.0	111.0	121.5	104.5	25.0	46.0	45.0	3.20	
Ø2-1/2" NPT	DSBR 7	3.40	231.0	128.0	153.0	133.0	32.0	66.5	55.0	4.55	
Ø3" NPT	DSBR 8	4.90	262.0	142.0	162.0	142.0	34.0	71.0	60.0	5.71	
Ø3-1/2" NPT	DSBR 9	8.60	311.0	174.0	197.0	173.0	35.5	77.0	78.0	8.55	
Ø4" NPT	DSBR 10	8.95	311.0	174.0	197.0	173.0	36.0	77.0	78.0	8.85	

			a	b	c	d	e	f	g		
Ø1/2" NPT	DSBT 1	0.12	100.0	44.0	56.0	43.0	20.0	20.0	-	0.47	
Ø3/4" NPT	DSBT 2	0.20	110.0	50.0	62.0	49.0	20.0	22.0	-	0.59	
Ø1" NPT	DSBT 3	0.38	130.5	60.0	76.5	61.0	24.0	24.0	-	0.95	
Ø1-1/4" NPT	DSBT 4	0.60	144.0	65.0	88.5	73.0	24.5	32.5	-	1.25	
Ø1-1/2" NPT	DSBT 5	0.83	161.0	70.0	95.5	78.5	26.5	35.0	-	1.64	
Ø2" NPT	DSBT 6	2.00	200.0	111.0	121.5	104.5	25.0	46.0	-	3.20	
Ø2-1/2" NPT	DSBT 7	3.42	231.0	128.0	153.0	133.0	32.0	66.5	-	4.55	
Ø3" NPT	DSBT 8	4.92	262.0	142.0	162.0	142.0	34.0	71.0	-	5.71	
Ø3-1/2" NPT	DSBT 9	8.62	311.0	174.0	197.0	173.0	35.5	77.0	-	8.55	
Ø4" NPT	DSBT 10	8.99	311.0	174.0	197.0	173.0	36.0	77.0	-	8.85	

			a	b	c	d	e	f	g		
Ø1/2" NPT	DSBX 1	0.13	100.0	44.0	56.0	43.0	20.0	20.0	-	0.47	
Ø3/4" NPT	DSBX 2	0.21	110.0	50.0	62.0	49.0	20.0	22.0	-	0.59	
Ø1" NPT	DSBX 3	0.40	130.5	60.0	76.5	61.0	24.0	24.0	-	0.95	
Ø1-1/4" NPT	DSBX 4	0.62	144.0	65.0	88.5	73.0	24.5	32.5	-	1.25	
Ø1-1/2" NPT	DSBX 5	0.85	161.0	70.0	95.5	78.5	26.5	35.0	-	1.64	
Ø2" NPT	DSBX 6	2.04	200.0	111.0	121.5	104.5	25.0	46.0	-	3.20	
Ø2-1/2" NPT	DSBX 7	3.44	231.0	128.0	153.0	133.0	32.0	66.5	-	4.55	
Ø3" NPT	DSBX 8	4.94	262.0	142.0	162.0	142.0	34.0	71.0	-	5.71	
Ø3-1/2" NPT	DSBX 9	8.64	311.0	174.0	197.0	173.0	35.5	77.0	-	8.55	
Ø4" NPT	DSBX 10	9.00	311.0	174.0	197.0	173.0	36.0	77.0	-	8.85	