

Application

The DNP nipples are accessories cylindrical shaped, with ends male threaded. To connect either female threaded entries.

Specification

Material : Intermediate Metal Conduit (IMC)
 Finishing galvanize coated thread
 Stainless Steel (SUS 304 or SUS 316)
 and Brass are Option



Standard NPT thread:

ANSI/ASME B1.20.1

On request:

Long length

Technical Data

Hazardous Area	Gas	Dust
Zones	1 & 2	21 & 22
Equipment Group/Category	 II 2G	 II 2D
Symbol of Protection	Ex db IIC T6/T4 Gb Ex eb IIC T6/T4 Gb	Ex tb IIIC T80°C/T150°C Db IP66
Certificate	KDB 21 ATEX 0037 U IECEX KDB 21.0007 U	
Conformity to Standards	EN IEC 60079-0:2018, EN 60079-1:2014, EN 60079-7:2016, EN 60079-31:2014 IEC 60079-0:2017, IEC 60079-1:2014-06, IEC 60079-7:2015, IEC 60079-31:2013	
Ambient Temperature	-40°C to +80°C (-60°C to +150°C stainless steel or Brass)	
Index of Protection	IP66	

Catalogue Number Logic

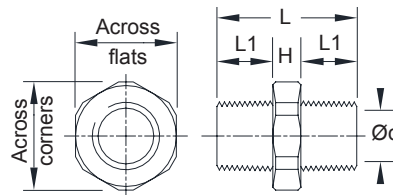
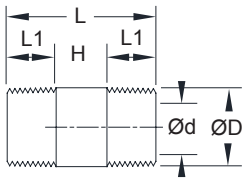
DNP - **-**

Series	Thread	Length	Material
I	IMC	S4	Stainless steel, SUS 304
B	Brass	S6	Stainless steel, SUS 316

Ordering Requirements and Dimension

IMC (standard)

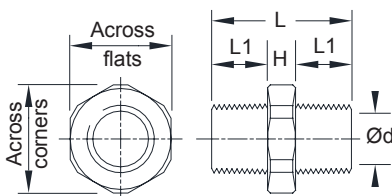
Stainless steel or Brass



Cat. No.	Entries Thread (Male)	Dimension in mm.				
		L	L1	H	Inside Diameter (Ød)	Outside Diameter (ØD)
DNP-N1-59I	Ø1/2" NPT	59.70	19.85	20.0	17.12	20.70
DNP-N2-60I	Ø3/4" NPT	60.30	20.15	20.0	22.34	26.14
DNP-N3-70I	Ø1" NPT	70.00	25.00	20.0	28.45	32.77
DNP-N4-71I	Ø1-1/4" NPT	71.22	25.61	20.0	37.27	41.59
DNP-N5-72I	Ø1-1/2" NPT	72.08	26.04	20.0	43.23	47.81
DNP-N6-73I	Ø2" NPT	73.74	26.87	20.0	55.11	59.93
DNP-N7-104I	Ø2-1/2" NPT	104.80	39.90	25.0	65.44	72.56
DNP-N8-107I	Ø3" NPT	107.98	41.49	25.0	81.17	88.29
DNP-N9-110I	Ø3-1/2" NPT	110.52	42.76	25.0	93.74	100.86
DNP-N10-113I	Ø4" NPT	113.06	44.03	25.0	106.28	113.40

Cat. No.	Entries Thread (Male)	Dimension in mm.					
		L	L1	H	Inside Diameter (Ød)	Across Corners	Across Flats
DNP-N1-59 □	Ø1/2" NPT	59.70	19.85	20.0	14.5	24.5	22.00
DNP-N2-60 □	Ø3/4" NPT	60.30	20.15	20.0	18.0	35.0	31.75
DNP-N3-70 □	Ø1" NPT	70.00	25.00	20.0	24.0	42.0	38.10
DNP-N4-71 □	Ø1-1/4" NPT	71.22	25.61	20.0	31.0	49.0	44.40
DNP-N5-72 □	Ø1-1/2" NPT	72.08	26.04	20.0	37.0	56.0	50.80
DNP-N6-73 □	Ø2" NPT	73.74	26.87	20.0	49.0	70.0	63.50
DNP-N7-104 □	Ø2-1/2" NPT	104.80	39.90	25.0	60.0	84.0	76.20
DNP-N8-107 □	Ø3" NPT	107.98	41.49	25.0	74.0	112.0	101.00
DNP-N9-110 □	Ø3-1/2" NPT	110.52	42.76	25.0	86.0	126.0	114.00
DNP-N10-113 □	Ø4" NPT	113.06	44.03	25.0	96.0	134.0	120.00

Stainless steel or Brass (Metric)



Cat. No.	Entries Thread (Male)	Dimension in mm.					
		L	L1	H	Inside Diameter (Ød)	Across Corners	Across Flats
DNP-M1-50 □	M20x1.5	50.0	15.0	20.0	14.5	26.5	24.0
DNP-M2-50 □	M25x1.5	50.0	15.0	20.0	18.0	35.0	31.75
DNP-M3-50 □	M32x1.5	50.0	15.0	20.0	24.0	42.0	38.1
DNP-M4-50 □	M40x1.5	50.0	15.0	20.0	32.0	49.0	44.4
DNP-M5-50 □	M50x1.5	50.0	15.0	20.0	40.0	63.0	57.1
DNP-M6-50 □	M63x1.5	50.0	15.0	20.0	51.0	70.0	77.0