



Cable Fitting: Cable Gland for Non-Armoured Cable, DNAF Series (Female threads ended)

Flameproof/ Increased Safety and Dust protection by enclosure

Zone 1 & 2 – 21 & 22

Application

The DNAF cable glands are suitable for used in zone 1, 2 and zone 21, 22 hazardous areas to enable direct insertion of normal non-armoured cable into Ex d equipment or enclosure. The gland nut is provided with female threads ended.

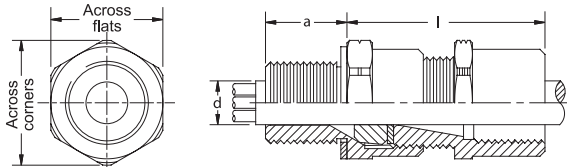
Specification

Body, gland nut : Brass
(Nickel-plated brass as option)
Thread seal : Nylon (PA6)
(For metric threads only)

Catalogue Number Logic

DNAF / ■ - ■ - □

Series	Body	Threads	Option
S	Small	N	NI
M	Medium	M	Nickel-plated
L	Large		



Technical Data

Hazardous Area	Gas	Dust
Zones	1 & 2	21 & 22
Equipment Group/Category	II 2G	II 2D
Symbol of Protection	Ex db eb IIC Gb	Ex tb IIIC Db IP66
Certificate	TÜV CY 18 ATEX 0206101 X	
T Rating	Temperature class of enclosure to which will be connected.	
Conformity to Standards	EN 60079-0:2012+A11:2013, EN 60079-1:2014, EN 60079-7:2015, EN 60079-31:2014	
Ambient Temperature	-20°C to +75°C	
Index of Protection	IP66	

Note: Cables for fixed installations shall have flame propagation characteristics which enable them to withstand the tests according to IEC 60332-1-2 or IEC 60332-3-22.



Brass



Nickel-plated brass

Ordering Requirements

Cat. No.	Entries Threads (Male)		Cable Dia. Outer 'd'	Threads Ended (Female)	Dimension in mm.				Approx. Weight (kgs.)		
	Metric	NPT			Min - Max	NPT	l	a		Across Corners	Across Flats
DNAF/S -M0N1 - □	M16x1.5	-	3.0-8.6	1/2"	38.5	15.0	26.5	24.0	0.08		
DNAF/S -M1N1 - □	M20x1.5	-							0.10		
DNAF/S -N1 - □	-	1/2"							0.11		
DNAF/M -M1N1 - □	M20x1.5	-	6.1-11.9	1/2"	38.5	15.0	26.5	24.0	0.10		
DNAF/M -N1 - □	-	1/2"							0.10		
DNAF/L -M1N1 - □	M20x1.5	-	6.5-14.3	1/2"	39.5	15.0	35.0	31.75	0.11		
DNAF/S -M2N2 - □	M25x1.5	-							0.16		
DNAF/L -N1 - □	-	1/2"							0.12		
DNAF/S -N2 - □	-	3/4"	11.1-20.2	3/4"	42.5	19.8	35.0	31.75	0.17		
DNAF/M -M2N2 - □	M25x1.5	-							0.17		
DNAF/S -M3N3 - □	M32x1.5	-							0.23		
DNAF/M -N2 - □	-	3/4"	17.0-26.5	3/4"	49.5	20.1	42.0	38.1	0.25		
DNAF/S -N3 - □	-	1"							0.28		
DNAF/M -M3N3 - □	M32x1.5	-							0.23		
DNAF/S -M4N4 - □	M40x1.5	-	22.0-32.5	1-1/4"	47.5	15.0	49.0	44.4	0.31		
DNAF/M -N3 - □	-	1"							0.25		
DNAF/S -N4 - □	-	1-1/4"							0.40		
DNAF/M -M4N4 - □	M40x1.5	-	29.5-38.1	1-1/4"	51.0	15.0	63.0	57.1	0.45		
DNAF/S -M5N5 - □	M50x1.5	-							0.37		
DNAF/M -N4 - □	-	1-1/4"							0.49		
DNAF/S -N5 - □	-	1-1/2"	35.6-44.0	1-1/2"	59.0	26.0	63.0	57.1	0.42		
DNAF/M -M5N5 - □	M50x1.5	-							0.46		
DNAF/M -N5 - □	-	1-1/2"							0.48		
DNAF/L -M5N5 - □	M50x1.5	-	39.0-44.0	2"	51.0	15.0	70.0	63.5	0.48		
DNAF/S -M6N6 - □	M63x1.5	-							0.72		
DNAF/L -N5 - □	-	1-1/2"							0.60		
DNAF/S -N6 - □	-	2"	44.1-54.0	2"	60.0	26.9	77.0	70.0	0.80		
DNAF/M -M6N6S - □	M63x1.5	-							0.63		
DNAF/S -M7N7S - □	M75x1.5	-							1.00		
DNAF/M -N6S - □	-	2"	0.84								
DNAF/S -N7S - □	-	2-1/2"	1.56								
DNAF/M -M6N6L - □	M63x1.5	-	0.63								
DNAF/S -M7N7L - □	M75x1.5	-	1.00								
DNAF/M -N6L - □	-	2"	0.84								
DNAF/S -N7L - □	-	2-1/2"	1.56								

Thread seal



Body (Entry thread)



Neoprene inner sealing ring

Sealing washer



Gland nut Female Threads ended