



Lighting: H.I.D. (High Intensity Discharge) Lighting Fixture, DLF1-MV, DLF1-PS, DLF1-MH Series

Flameproof/ Increased Safety and Dust protection by enclosure

Zone 1 & 2 – 21 & 22

Specification

Body material : Marine grade copper-free aluminium alloy with polyester powder coated, RAL 7032 (grey)
 Globe : Borosilicate glass
 Guard, bolts : Stainless steel
 Seal gasket : Silicone
 Bracket : Hot-dip galvanized steel

Option

Body : Offshore painting (Acrylic polyurethane coating)
 Basket guard :
 Stainless steel, SUS 316
 Bracket :
 Stainless steel, SUS 316
 Screws :
 Stainless steel, SUS 316



Technical Data

Hazardous Area	Gas	Dust
Zones	1 & 2	21 & 22
Equipment Group/Category	Ex II 2G	Ex II 2D
Symbol of Protection	Ex db eb IIC T** Gb	Ex tb IIIC T** °C Db IP66
Certificate	TÜV CY 18 ATEX 0206011 X	
Conformity to standards	EN 60079-0:2012+A11:2013, EN 60079-1:2014, EN 60079-7:2015, EN 60079-31:2014	
Ambient Temperature	-20°C to +55°C	
Index of Protection	IP66	
Entries	2- M25x1.5 or 2- Ø3/4" NPT (1-stopping plug)	
Mounting	Ceiling or Bracket mounting (standard) (Optional mounting ; 2x M10 eye bolts, clamps for pipe)	
Connection	L, N and E ; for 1-4mm. ² cable (Through wiring system with an extra terminal block for cable connection at both ends.)	
Rated Voltage	220/ 230/ 240V.ac ±5% 50/60Hz.	

Catalogue Number Logic

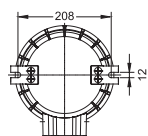
** See temperature class on catalogue number table.

Series	Type	Lamp Watt	Voltage	Accessories	Mounting	Entries
DLF1 -	■ ■ ■ ■	■ ■ ■ ■	■ ■ ■ ■	□ □ □ □	□ □ □ □	□ □ □ □
MV	Mercury Vapour	(see ordering requirement table below)	22 220V.ac 50Hz. 23 230V.ac 50Hz.	R Reflector G Basket guard	C Ceiling B Bracket	M2 M25x1.5 N2 Ø3/4" NPT
PS	High Pressure Sodium					
MH	Metal halide					

Ordering Requirements and Dimension

Cat. No.	Lamp Watt	Voltage	Lamp Model (Lamp/ Ballast/ Ignitor)	Temp. Class (for zone 1 & 2)		Max. Surface Temp.* (for zone 21 & 22)		Wiring Diagram	Approx. Weight (kgs.)
				Ta 40°C	Ta 55°C	Ta 40°C	Ta 55°C		
Mercury Vapor Lamp									
DLF1-MV-08022	80W.	220V.ac 50Hz.	HPL-N 80W / Q80.587 / -	T5	T4	T100°C	T135°C	Dia-B	8.7
DLF1-MV-12522	125W.	230V.ac 50Hz.	HPL-N 80W / OMB80-35 / -	T5	T5	T100°C	T100°C	Dia-B	
DLF1-MV-08023	80W.		HPL-N 125W / Q125.549 / -	T5	T4	T100°C	T135°C	Dia-B	
DLF1-MV-12523	125W.	HPL-N 80W / Q80.588 / -	T5	T5	T100°C	T100°C	Dia-B		
			HPL-N 125W / Q125.568 / -	T4	T4	T135°C	T135°C	Dia-B	
High Pressure Sodium Lamp									
DLF1-PS-070122	70W.	220V.ac 50Hz.	SON-70W1 / NaHJ70.320 / -	T5	T5	T100°C	T100°C	Dia-B	8.7
DLF1-PS-070123		230V.ac 50Hz.	SON-70W1 / NaHJ70.158 / -	T5	T4	T100°C	T135°C	Dia-B	
DLF1-PS-07023			SON-70W / NaHJ70.158 / Z400M	T5	T4	T100°C	T135°C	Dia-A	
Metal Halide Lamp									
DLF1-MH-07022	70W.	220V.ac 50Hz.	MH 70W / NaHJ70.320 / Z400M	T5	T4	T100°C	T135°C	Dia-A	8.9
			MH 70W / OMS 70-T35 / Z400M	T5	T5	T100°C	T100°C	Dia-A	
DLF1-MH-10022	100W.		MH 100W / OMS 100 / Z400M	T5	T4	T100°C	T135°C	Dia-A	
DLF1-MH-07023	70W.	230V.ac 50Hz.	MH 70W / NaHJ70.128 / Z400M	T5	T4	T100°C	T135°C	Dia-A	

Ceiling mount



Bracket mount

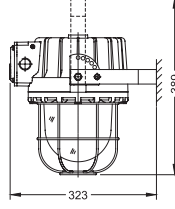
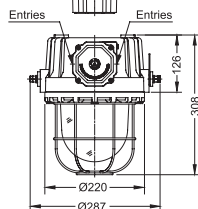
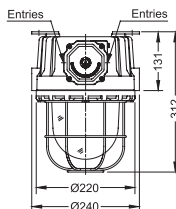
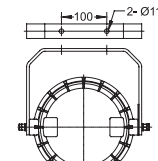


Diagram-A

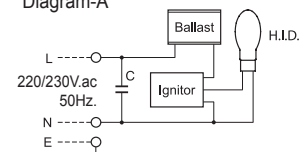
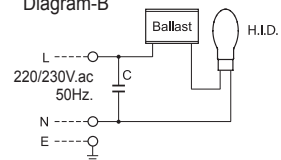


Diagram-B



Remark * : The maximum surface temperatures are specified for dust free condition. The dust layer which may cover around the lighting fixture will cause to higher surface temperature.