

Signal and Alarm: Warning Light (Signal Light), DLF1-BN, DLF1-OB, DLF1-WN Series

Flameproof/ Increased Safety and Dust protection by enclosure

Zone 1 & 2 – 21 & 22

Application

The warning light are showing the working status of machines or equipment production process etc.

Specification

- Body material : Marine grade copper-free aluminium alloy with polyester powder coated, RAL 7032 (grey)
- Globe : Borosilicate glass
- Filter : Plastic (Warning Light)
- Guard, bolts : Stainless steel, SUS 304
- Seal gasket : Silicone
- Bracket : Hot-dip galvanized steel

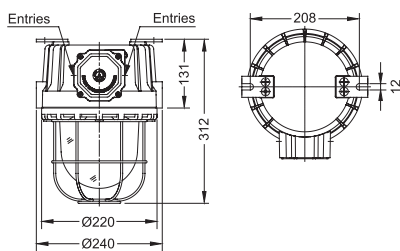
Option

- Body : Offshore painting (Acrylic polyurethane coating)
- Guard, bolts : Stainless steel, SUS 316
- Bracket : Stainless steel, SUS 316

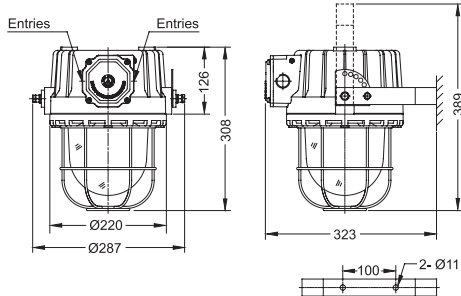


Dimension

Ceiling mount



Bracket mount



Technical Data

Hazardous Area	Gas	Dust
Zones	1 & 2	21 & 22
Equipment Group/Category	Ex II 2G	Ex II 2D
Symbol of Protection	Ex db eb IIC T6/ T5 Gb	Ex tb IIC T80°C/ T100°C Db IP66
Certificate	TÜV CY 18 ATEX 0206011 X	
Conformity to Standards	EN 60079-0:2012+A11:2013, EN 60079-1:2014, EN 60079-7:2015, EN 60079-31:2014	
Ambient Temperature	-20°C to +55°C	
Index of Protection	IP66	

Entries	2- M25x1.5 or 2- Ø3/4" NPT (1-stopping plug)
Mounting	Ceiling or Bracket mounting (standard) (Optional mounting ; 2x M10 eye bolts, clamps for pipe)
Connection	L, N and E ; for 1-4mm. ² cable (Through wiring system with an extra terminal block for cable connection at both ends.)
Rated Voltage	220/ 230/ 240V.ac ±5% 50/60Hz.

Catalogue Number Logic

Warning Light (Rotating)

DLF1 - BN - [] [] [] [] [] [] []

Series	Type	Voltage	Lens Colour	Accessories	Mounting	Entries
1D	12V.dc	R	Red	G	C	M2
2D	24V.dc	Y	Yellow	B	C	M25x1.5
22	220V.ac 50Hz.	G	Green		B	N2
		B	Blue			Ø3/4" NPT

Warning Light (LED lamp with lens colour)

DLF1 - WN - [] [] [] [] [] [] []

Series	Type	Lamp Watts	Voltage	Lens Colour	Accessories	Mounting	Entries
22	220V.ac 50Hz.	22	R	G	C	M2	
06	6W.	07	7W.	Y	B	M25x1.5	
09	9W.	10	10W.	G		N2	
			B			Ø3/4" NPT	

Low Intensity ICAO Obstruction Lights (Red LED)

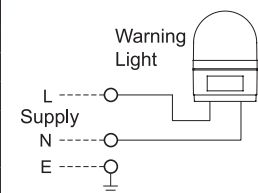
DLF1 - OB - [] [] [] [] [] [] []

Series	Type	Voltage	Lens Colour	Accessories	Mounting	Entries
24	110-240V.ac 50/60Hz.	R	G	C	M2	M25x1.5
				B	N2	Ø3/4" NPT

Ordering Requirements

Cat. No.	Voltage	Power Consumption	Flash Rate	Temp. Class (for zone 1 & 2)		Max. Surface Temp.* (for zone 21 & 22)	
				Ta 40 °C	Ta 55 °C	Ta 40 °C	Ta 55 °C
Warning Light (Rotating) ● ● ● ●							
DLF1-BN-1D	12V.dc	2.4W.	120 fpm	T6	T5	T80°C	T100°C
DLF1-BN-2D	24V.dc	3.4W.					
DLF1-BN-22	220V.ac 50Hz.	3.0W.					
Warning Light (LED lamp with lens colour) ● ● ● ●							
DLF1-WN-0622	220V.ac 50Hz.	6W.	—	T6	T5	T80°C	T100°C
DLF1-WN-0722		7W.					
DLF1-WN-0922		9W.					
DLF1-WN-1022		10W.					
Low Intensity ●							
DLF1-OB-24R	110-240V.ac 50/60Hz.	4.65W.	—	T6	T5	T80°C	T100°C

Wiring Diagram



Remark * : The maximum surface temperatures are specified for dust free condition. The dust layer which may cover around the lighting fixture will cause to higher surface temperature.