

Application

DCT1DE control boxes consist of an Ex d enclosure in aluminium alloy, and JBE3B Ex e enclosure in stainless steel are designed for use

- in hazardous areas, zone 1, 2 and zone 21, 22.
- installation in petroleum refineries, chemical plants, storage areas where hazardous substances are handled.
- instrument box with circular or rectangular window.
- containing analogue and digital measuring instruments.
- indicating the electrical function performed.

Specification

Ex d enclosure

Body, cover : Marine grade copper-free aluminium alloy with polyester powder coated, RAL 7032 (Grey)

Ex e enclosure

Body, cover : Stainless steel SUS 304 or SUS 316

Lid screws : Stainless steel

Sealing gasket : Silicone

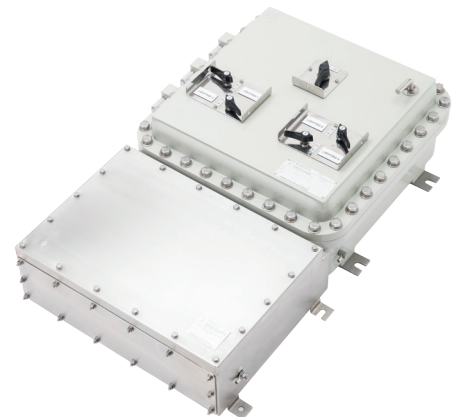
Option

Ex d enclosure

Body, cover : Offshore painting (Acrylic polyurethane coating)

Technical Data

Hazardous Area	Gas	Dust
Zones	1 & 2	21 & 22
Equipment Group/Category	II 2G	II 2D
Symbol of Protection	Ex db eb IIB+H₂ T6/T5 Gb Ex tb IIIC T85°C/ T100°C Db IP66	
Conformity to Standards	EN IEC 60079-0:2018, EN 60079-1:2014, EN 60079-7:2016, EN 60079-31:2014	
Ambient Temperature	-40°C to +65°C	
Index of Protection	IP66	
Entries	NPT or Metric threads	
Mounting	Wall mount	
Rated Voltage	Max. 750V.ac 50/60Hz.	



A

B

C

D

E

F

G

H

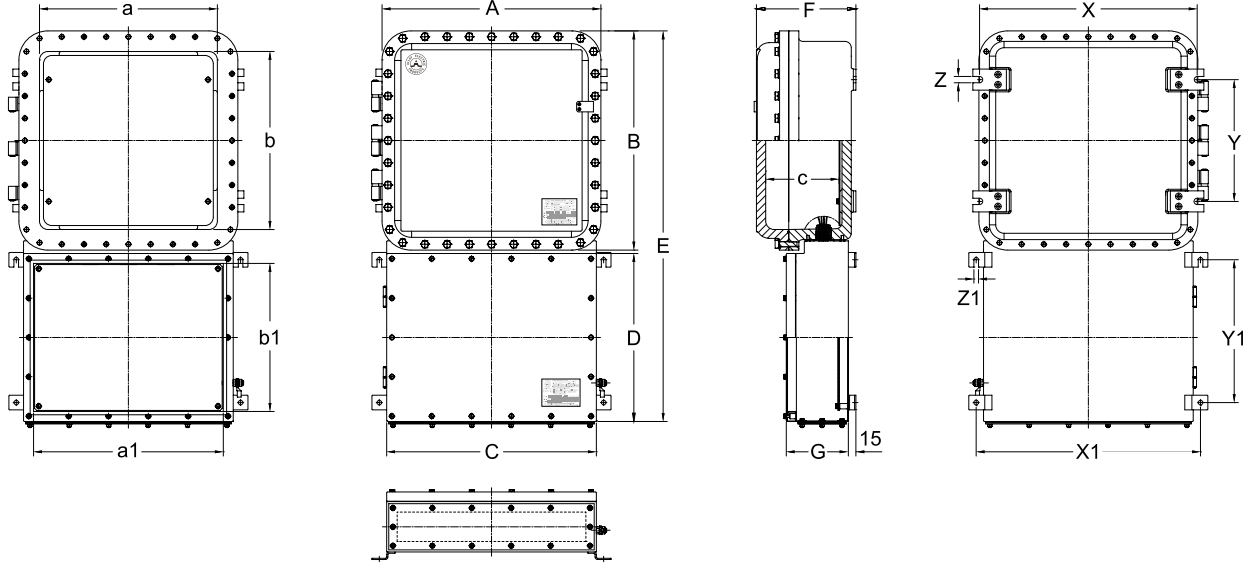
Control Station and Control Panel: Control Box/ Junction Box with terminals, DCT1DE/JBE3B series

Flameproof/ Increased Safety and Dust protection by enclosure

Zone 1 & 2 – 21 & 22



Dimension



Cat. No.		Dimension in mm.																		
		Inside						Outside						Mounting						
Ex db	Ex eb	a	b	c	a1	b1	c1	A	B	C	D	E	F	G	X	Y	Z	X1	Y1	Z1
DCT1DE 685	/JBE3B □ -141410	100	155	102	90	90	79	170	225	140	140	370	134	107	160	100	10	175	75	11
DCT1DE 886	/JBE3B □ -181812	138	138	130	130	130	97	210	210	180	180	395	164	125	202	100	10	215	115	11
DCT1DE 8126	/JBE3B □ -182512	135	240	127	130	200	99	207	312	180	250	567	164	125	200	160	12	215	185	11
DCT1DE 8126	/JBE3B □ -202512	240	135	127	150	200	99	312	207	200	250	462	164	125	200	160	12	235	185	11
DCT1DE 8187	/JBE3B □ -202016	136	394	167	150	150	136	208	466	200	200	671	204	164	200	300	12	235	135	11
DCT1DE 8187	/JBE3B □ -352016	394	136	167	300	150	136	466	208	350	200	413	204	164	200	300	12	385	135	11
DCT1DE 9157	/JBE3B □ -202515	164	314	160	150	200	127	237	387	200	250	642	198	155	228	230	12	235	185	11
DCT1DE 9157	/JBE3B □ -282015	314	164	160	230	150	127	387	237	280	200	442	198	155	228	230	12	315	135	11
DCT1DE 9207	/JBE3B □ -202516	162	440	171	150	200	136	230	508	200	250	763	208	164	228	350	12	235	185	11
DCT1DE 9207	/JBE3B □ -402016	440	162	171	350	150	136	508	230	400	200	435	208	164	228	350	12	435	135	11
DCT1DE 101610	/JBE3B □ -202520	174	324	217	150	200	178	263	413	200	250	668	260	206	240	240	12	235	185	11
DCT1DE 101610	/JBE3B □ -282520	324	174	217	230	200	178	413	263	280	250	518	260	206	240	240	12	315	185	11
DCT1DE 11218	/JBE3B □ -302516	210	450	177	150	200	138	299	539	200	250	794	220	166	276	350	12	235	185	11
DCT1DE 11218	/JBE3B □ -402516	450	210	177	350	200	138	539	299	400	250	554	220	166	276	350	12	435	185	11
DCT1DE 12127	/JBE3B □ -302515	244	244	162	250	200	123	333	333	300	250	588	205	151	310	170	12	335	185	11
DCT1DE 15156	/JBE3B □ -352511	300	300	122	300	200	85	389	389	350	250	644	165	113	366	240	12	385	185	11
DCT1DE 151510	/JBE3B □ -352521	300	300	222	300	200	183	389	389	350	250	644	267	211	366	240	12	385	185	11
DCT1DE 15198	/JBE3B □ -353016	298	398	172	300	250	133	387	487	350	300	792	217	161	364	300	12	385	235	11
DCT1DE 162810	/JBE3B □ -404020	330	627	225	350	350	174	423	720	400	400	1125	279	202	402	450	12	435	335	11
DCT1DE 162810	/JBE3B □ -504020	627	330	225	450	350	174	720	423	500	400	828	279	202	402	450	12	535	335	11
DCT1DE 20208	/JBE3B □ -503516	424	424	182	450	300	132	522	522	500	350	877	237	160	519	290	15	535	285	11
DCT1DE 202410	/JBE3B □ -504019	430	530	220	450	350	166	534	634	500	400	1039	271	194	513	450	15	535	335	11
⊕ DCT1DE 20329	/JBE3B □ -505018	423	713	208	450	450	156	532	822	500	500	1327	262	184	510	650	15	535	435	11
⊕ DCT1DE 20329	/JBE3B □ -655018	713	423	208	600	450	156	822	532	650	500	1037	262	184	510	650	15	685	435	11
⊕ DCT1DE 203611	/JBE3B □ -505021	408	813	235	450	450	184	524	929	500	500	1434	296	212	511	680	15	535	435	11
⊕ DCT1DE 203611	/JBE3B □ -705021	813	408	235	650	450	184	929	524	700	500	1029	296	212	511	680	15	735	435	11
⊕ DCT1DE 284411	/JBE3B □ -608020	600	1000	235	550	750	179	743	1143	600	800	1948	301	207	707	800	15	635	735	11
⊕ DCT1DE 284411	/JBE3B □ -906020	1000	600	235	850	550	179	1143	743	900	600	1348	301	207	707	800	15	935	535	11

⊕ 6 Mounting feet.

□ Housing material ; 4 - SUS 304, 6 - SUS 316