



## Application

The conductor bushing are used to provide the wire connection between flameproof enclosures and increased safety enclosures.

## Specification

Body : Brass  
(Nickel-plated brass as option)  
Seal : Polyurethane cast resin

## Electrical Rating

Voltage : up to 750V.  
Ampere : up to 200A.  
Conductor : 1.5mm.<sup>2</sup> up to 70mm.<sup>2</sup>  
Strand copper wire (H07V2-K)  
Conductor length: 500/500mm. (Ex db/ Ex eb)

## Technical Data

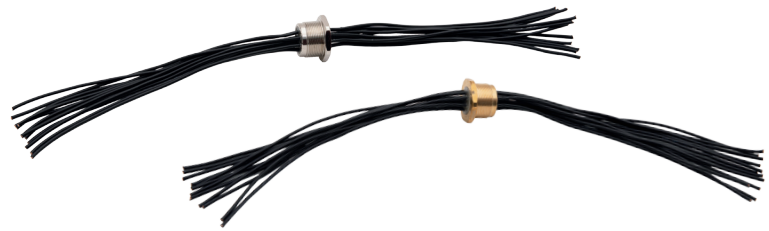
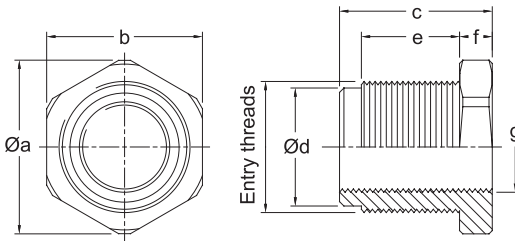
<b>Hazardous Area</b>	<b>Gas</b>	<b>Dust</b>
<b>Zones</b>	<b>1 &amp; 2</b>	<b>21 &amp; 22</b>
<b>Equipment Group/Category</b>	<b>II 2G</b>	<b>II 2D</b>
<b>Symbol of Protection</b>	<b>Ex db eb IIC Gb</b>	<b>Ex tb IIIC Db IP66</b>
<b>T Rating</b>	Temperature class of enclosure to which will be connected.	
<b>Conformity to Standards</b>	EN 60079-0:2012+A11:2013, EN 60079-1:2014, EN 60079-7:2015, EN 60079-31:2014	
<b>Ambeint Temperature</b>	-40°C to +105°C	
<b>Index of Protection</b>	IP66	

## Catalogue Number Logic

**DCB**

Series	Number of Core		Conductor Size		Threads	Option		
01	1 core	12	12 cores	1X 1.5mm. <sup>2</sup>	16	16.0mm. <sup>2</sup>	M0 M16x1.5	NI Nickel-plated
03	3 cores	22	22 cores	2X 2.5mm. <sup>2</sup>	25	25.0mm. <sup>2</sup>	M2 M25x1.5	
04	4 cores	34	34 cores	4X 4.0mm. <sup>2</sup>	35	35.0mm. <sup>2</sup>	M3 M32x1.5	
06	6 cores	48	48 cores	6X 6.0mm. <sup>2</sup>	50	50.0mm. <sup>2</sup>	M4 M40x1.5	
10	10 cores			10 10.0mm. <sup>2</sup>	70	70.0mm. <sup>2</sup>	M5 M50x1.5	

## Ordering Requirements



Cat. No.	Conductor Size (mm. <sup>2</sup> )	Rated Operational Current at 40°C (A.)	Rated Operational Voltage (V.)	Conductor Quantity (core)	Entry Threads (Metric)	Dimension in mm.						
						Øa	b	c	Ød	e	f	g
DCB 04 1X -M0 -□	1.5mm. <sup>2</sup>	16A.	450/750V.	4 cores	M16x1.5	24.5	22.0	20.0	14.0	15.0	5.0	M10x1.5
DCB 06 1X -M2 -□				6 cores	M25x1.5	35.0	31.75	20.0	23.0	15.0	5.0	M18x1.5
DCB 12 1X -M3 -□				12 cores	M32x1.5	42.0	38.1	20.0	30.0	15.0	5.0	M25x1.5
DCB 34 1X -M4 -□				34 cores	M40x1.5	49.0	44.4	20.0	38.0	15.0	5.0	M32x1.5
DCB 48 1X -M5 -□	2.5mm. <sup>2</sup>	23A.	450/750V.	48 cores	M50x1.5	56.0	50.8	20.0	48.0	15.0	5.0	M42x1.5
DCB 03 2X -M0 -□				3 cores	M16x1.5	24.5	22.0	20.0	14.0	15.0	5.0	M10x1.5
DCB 04 2X -M2 -□				4 cores	M25x1.5	35.0	31.75	20.0	23.0	15.0	5.0	M18x1.5
DCB 10 2X -M3 -□				10 cores	M32x1.5	42.0	38.1	30.0	20.0	15.0	5.0	M25x1.5
DCB 22 2X -M4 -□	4.0mm. <sup>2</sup>	31A.	450/750V.	22 cores	M40x1.5	49.0	44.4	20.0	38.0	15.0	5.0	M32x1.5
DCB 34 2X -M5 -□				34 cores	M50x1.5	56.0	50.8	20.0	48.0	15.0	5.0	M42x1.5
DCB 01 4X -M0 -□				1 core	M16x1.5	24.5	22.0	20.0	14.0	15.0	5.0	M10x1.5
DCB 03 4X -M2 -□				3 cores	M25x1.5	35.0	31.75	20.0	23.0	15.0	5.0	M18x1.5
DCB 06 4X -M3 -□	6.0mm. <sup>2</sup>	40A.	450/750V.	6 cores	M32x1.5	42.0	38.1	20.0	30.0	15.0	5.0	M25x1.5
DCB 16 4X -M4 -□				16 cores	M40x1.5	49.0	44.4	20.0	38.0	15.0	5.0	M32x1.5
DCB 01 6X -M0 -□				1 core	M16x1.5	24.5	22.0	20.0	14.0	15.0	5.0	M10x1.5
DCB 03 6X -M2 -□				3 cores	M25x1.5	35.0	31.75	20.0	23.0	15.0	5.0	M18x1.5
DCB 06 6X -M3 -□	10.0mm. <sup>2</sup>	58A.	450/750V.	6 cores	M32x1.5	42.0	38.1	20.0	30.0	15.0	5.0	M25x1.5
DCB 10 6X -M4 -□				10 cores	M40x1.5	49.0	44.4	20.0	38.0	15.0	5.0	M32x1.5
DCB 01 10 -M2 -□				1 core	M25x1.5	35.0	31.75	20.0	23.0	15.0	5.0	M18x1.5
DCB 03 10 -M3 -□				3 cores	M32x1.5	42.0	38.1	20.0	30.0	15.0	5.0	M25x1.5
DCB 06 10 -M4 -□	16.0mm. <sup>2</sup>	75A.	450/750V.	6 cores	M40x1.5	49.0	44.4	20.0	38.0	15.0	5.0	M32x1.5
DCB 01 16 -M2 -□				1 core	M25x1.5	35.0	31.75	20.0	23.0	15.0	5.0	M18x1.5
DCB 03 16 -M3 -□				3 cores	M32x1.5	42.0	38.1	20.0	30.0	15.0	5.0	M25x1.5
DCB 06 16 -M4 -□				6 cores	M40x1.5	49.0	44.4	20.0	38.0	15.0	5.0	M32x1.5
DCB 01 25 -M2 -□	25.0mm. <sup>2</sup>	98A.	450/750V.	1 core	M25x1.5	35.0	31.75	20.0	23.0	15.0	5.0	M18x1.5
DCB 03 25 -M4 -□				3 cores	M40x1.5	49.0	44.4	20.0	38.0	15.0	5.0	M32x1.5
DCB 04 25 -M5 -□				4 cores	M50x1.5	56.0	50.8	20.0	48.0	15.0	5.0	M42x1.5
DCB 01 35 -M2 -□				1 core	M25x1.5	35.0	31.75	20.0	23.0	15.0	5.0	M18x1.5
DCB 03 35 -M4 -□	35.0mm. <sup>2</sup>	124A.	450/750V.	3 cores	M40x1.5	49.0	44.4	20.0	38.0	15.0	5.0	M32x1.5
DCB 04 35 -M5 -□				4 cores	M50x1.5	56.0	50.8	20.0	48.0	15.0	5.0	M42x1.5
DCB 01 50 -M3 -□				1 core	M32x1.5	42.0	38.1	20.0	30.0	15.0	5.0	M25x1.5
DCB 03 50 -M5 -□				3 cores	M50x1.5	56.0	50.8	20.0	48.0	15.0	5.0	M42x1.5
DCB 01 70 -M3 -□	70.0mm. <sup>2</sup>	200A.	450/750V.	1 core	M32x1.5	42.0	38.1	20.0	30.0	15.0	5.0	M25x1.5