

Cable Fitting: Barrier Cable Gland for Armoured Cable, DACB Series

Flameproof/ Increased Safety and Dust protection by enclosure

Zone 1 & 2 – 21 & 22



Application

The DACB cable glands are suitable for used to direct insertion of SWA-steel wire armoured cable into Ex db equipment or enclosure.

Specification

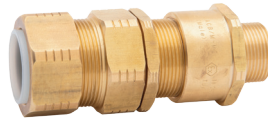
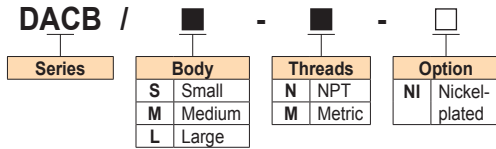
Body, gland nut : Brass
 Thread seal : Nylon (PA6)
 (For metric threads only)
 Seal : Epoxy barrier compound

Technical Data

Hazardous Area	Gas	Dust
Zones	1 & 2	21 & 22
Equipment Group/Category	II 2G	II 2D
Symbol of Protection	Ex db eb IIC Gb	Ex tb IIC Db IP66
T Rating	Temperature class of enclosure to which will be connected.	
Conformity to Standards	EN 60079-0:2012+A11:2013, EN 60079-1:2014, EN 60079-7:2015, EN 60079-31:2014	
Ambeint Temperature	-40°C to +75°C	
Index of Protection	IP66	

Note: Cables for fixed installations shall have flame propagation characteristics which enable them to withstand the tests according to IEC 60332-1-2 or IEC 60332-3-22.

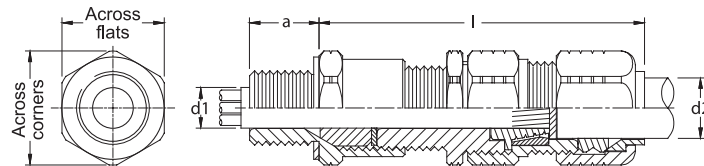
Catalogue Number Logic



Brass



Nickel-plated brass



Ordering Requirements

Cat. No.	Entries Threads (Male)		Cable Diameter		Armour Wire Dia.	Dimension in mm.				Approx. Weight (kgs.)	
	Metric	NPT	Inner 'd1' Min - Max	Outer 'd2' Min - Max		l	a	Across Corners	Across Flats		
DACB/S -M0	- □	M16x1.5	-	3.0-8.6	6.0-13.4	0.9	65.0	15.0	26.5	24.0	0.13
DACB/S -M1	- □	M20x1.5	-								
DACB/S -N1	- □	-	1/2"	6.1-11.9	9.5-16.0	0.9/1.25	65.0	15.0	26.5	24.0	0.14
DACB/M -M1	- □	M20x1.5	-								
DACB/M -N1	- □	-	1/2"	6.5-14.3	12.5-20.9	0.9/1.25	73.0	15.0	35.0	31.75	0.20
DACB/L -M1	- □	M20x1.5	-								
DACB/S -M2	- □	M25x1.5	-	11.1-20.2	16.9-26.2	1.25/1.6	81.0	15.0	42.0	38.1	0.37
DACB/L -M2	- □	M25x1.5	-								
DACB/S -N2	- □	-	3/4"	17.0-26.5	22.0-31.9	1.6/2.0	81.0	20.1	42.0	38.1	0.39
DACB/M -M2	- □	M25x1.5	-								
DACB/M -N2	- □	-	3/4"	22.0-32.5	26.0-38.5	1.6/2.0	92.0	15.0	49.0	44.4	0.60
DACB/S -M3	- □	M32x1.5	-								
DACB/S -N3	- □	-	1"	29.5-38.1	35.0-46.8	1.8/2.5	92.0	25.0	49.0	44.4	0.65
DACB/M -M3	- □	M32x1.5	-								
DACB/S -N4	- □	-	1-1/4"	35.6-44.0	38.0-50.1	1.8/2.5	98.0	15.0	70.0	63.5	1.00
DACB/M -M4	- □	M40x1.5	-								
DACB/S -N5	- □	-	1-1/2"	39.0-44.0	47.0-55.0	1.8/2.5	98.0	25.0	70.0	63.5	1.35
DACB/M -M4	- □	M40x1.5	-								
DACB/S -N6	- □	-	2"	44.1-54.0	55.1-65.0	1.8/2.5	99.0	15.0	84.0	76.2	1.35
DACB/M -M5	- □	M50x1.5	-								
DACB/S -N7S	- □	-	2-1/2"	44.1-54.0	55.1-65.0	1.8/2.5	99.0	26.9	84.0	76.2	1.35
DACB/M -M6S	- □	M63x1.5	-								
DACB/S -N7L	- □	-	2"	44.1-54.0	55.1-65.0	1.8/2.5	99.0	26.9	84.0	76.2	1.35
DACB/M -M7S	- □	M75x1.5	-								
DACB/S -N7L	- □	-	2-1/2"	44.1-54.0	55.1-65.0	1.8/2.5	99.0	39.9	84.0	76.2	1.35
DACB/M -M6L	- □	M63x1.5	-								
DACB/S -N7L	- □	-	2-1/2"	44.1-54.0	55.1-65.0	1.8/2.5	99.0	39.9	84.0	76.2	1.35
DACB/M -N6L	- □	M75x1.5	-								
DACB/S -N7L	- □	-	2-1/2"	44.1-54.0	55.1-65.0	1.8/2.5	99.0	39.9	84.0	76.2	1.35
DACB/M -N7L	- □	M75x1.5	-								

