

Streamvault SVS-7000E SAN

SAN storage array

Designed for applications combining large amounts of high resolution cameras, users and events, the SVS-7000E is a SAN storage array that scales with your needs. With server-side load balancing and expandable SAN storage, your system can scale seamlessly.

Guaranteed performance

up to
> **2,100** Mbps
throughput

up to
> **1,100**
cameras



Key features

Compatible with SV-7000EX security appliances

Up to 1.68 PB Raw Storage per 5U chassis

6.72 PB raw by headend unit with expansions

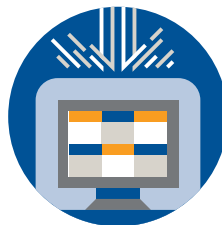
Cyber hardened

5-year hardware warranty with next-business day on-site service

Benefits



Reduce your infrastructure footprint – Connect more devices per appliance and reduce the number of units you need to manage your unified security system.



Protect your security system – Streamvault appliances help you build a resilient security system that protects your data and operations. Our cyber security experts stay vigilant on evolving threats and help identify and address new vulnerabilities promptly.



Deploy and expand seamlessly – Combining high performance and SAN storage, the Streamvault Series is designed to scale with your needs.

Applications

Transportation

The Streamvault 7000E Series delivers a unified system combining video, access control, intrusion and video analytics, so you can secure your entire airport or seaport efficiently.

Gaming

Record high-resolution footage from hundreds of cameras simultaneously and reduce your infrastructure footprint with the Streamvault 7000E Series.

Entertainment venues

Record and access high-resolution video instantly and resolve incidents without disrupting ongoing activities with the Streamvault 7000E Series.

Technical specifications

Management

MESM (HTML5 GUI, CLI, REST)

Mechanical and environmental

Form factor

5U Rackmount, 2U Rackmount

Power supply

SVS-7020E-R84:
2x 2200W PSU (200-240VAC)

Hard drive bays

SVS-7020E-R84:
84x 3.5" bays

Connectivity

16 Gb Fibre Channel, 10 Gb iSCSI

Ports

(4) Fibre Channel or (4) 25 GbE SFP28 (4)
Multiprotocol

Operating temperature

41°F to 104°F (5°C to 40°C)

Operating humidity

10 - 80% at 84.2°F (non-condensing)

Storage

Storage type

Storage Area Network (SAN)

Maximum data storage

SVS-7020E-R84:
1680TB (1.68PB) raw
1308.96 TB (1.3PB) usable

Expansion chassis supported

Up to 3 per base SAN array (Scales up to
6.72 PB of Raw Storage)

Drive type

12G dual-port SAS

Drive size

SVS-7020E-R84:
12 TB, 16 TB, 20 TB

RAID controllers

Dual controllers

Controller memory

32 GB (16 GB per controller)

Data RAID level

ADAPT (Distributed RAID),
RAID (0, 1, 5, 6, 10, 50)

Cybersecurity

Hardened image

200+ security settings changed by default

Maintenance

Verified Windows updates
Connected services for Genetec software
and device firmware updates

Warranty and support

Hardware warranty

5-year warranty with next business day
on-site service

Security Center support

Current and two previous versions (N-2)

Models

Model	Number of bays	Purpose	Dimensions	Max weight
SVS-7020E-R84-HE	84	Headend unit	19" x 35.12" x 8.75" (482.6mm x 892mm x 222.3mm)	298 lbs (135 kg)
SVS-7020E-R84-EX	84	Expansion Chassis	19" x 35.12" x 8.75" (482.6mm x 892mm x 222.3mm)	298 lbs (135 kg)

Genetec Inc.

genetec.com/locations
info@genetec.com
@genetec

* Hardware specifications are subject to change. Units provided will be equivalent or superior to what is shown in this document.

© 2023. Genetec Inc. All rights reserved. Genetec, Streamvault and their respective logos are trademarks of Genetec Inc., and may be registered or pending registration in several jurisdictions. Other trademarks used in this document may be trademarks of the manufacturers or vendors of the respective products.